

1994 NATIONAL CAMBRIDGE COLLECTORS, INC. BENEFIT AUCTION INFORMATION

AUCTIONEER: Craig Connelly

ADMISSION: \$2.00

LOCATION: Pritchard Laughlin Civic Center
Glenn Highway (U.S. 40 West at I-77)
Cambridge, Ohio

DATE: March 5, 1994

PREVIEW: 9:00 AM

AUCTION: 10:00 AM

All glass guaranteed to be Cambridge. The auction committee has checked all glass to be auctioned. All pieces should be examined immediately and returned before five items are sold if the article is not as represented. Any damage is indicated in this Catalog. If no color is indicated, the item is Crystal.

TERMS: Cash or check with proper identification, day of sale. All sales are subject to 6 1/2% Ohio Sales Tax. Dealers may sign an exemption form if the items purchased are for resale, in which case, no tax will be charged.

CATALOG INSTRUCTIONS: The number in parenthesis () at the end of each listing indicates the amount of items to be sold. Bidding will be by the piece if a number occurs at the end or as a lot if pair, set or lot is indicated. You may buy any number of an item if a number appears at the end of an item description. Colors refers to *Colors in Cambridge Glass* by NCC for reference.

MAIL BIDS: All bids must be accompanied by a check for each lot. Bids will be executed secretly, and the bidder will pay only the final auction price. Please include a stamped, self-addressed envelope with bids. You will be notified if you are not the successful bidder, and your check(s) will be returned and the final selling price will be noted. Ohio residents, please include 6 1/2% Ohio Sales tax or your Vendor's number. If you wish to have the pieces shipped to you, please include a separate check for adequate postage. All pieces will be shipped via UPS the week immediately following the auction. Please include your UPS delivery address(not a P. O. box). All items are sold in perfect condition unless noted, and you may expect to receive them that way if you mail bid. All items will be carefully checked again before they are shipped. Refund checks for bid overages will be returned immediately. For additional information phone (614) 826-7414.

Bids must be received by March 4 to be eligible. Mail bids to: Lynn Welker, 2 East Main, New Concord, Ohio 43762. Make checks payable to: National Cambridge Collectors, Inc.

MOTEL RESERVATIONS: Phone the Cambridge/Guernsey County Visitors & Conventions Bureau at 1-800-933-5480 for a listing of motels. Food will be available on the premises the day of the auction.

QUARTERLY MEETING: Friday March 4, at 7:30 PM. An informative meeting and preview of the auction glass will be presented. Bring a friend and your Show and Tell glass to the meeting.

Additional auction catalogs are \$1.00 postpaid or at the door.

1. 16 P101 Crystal 32 oz Cocktail Shaker, Original Patent Sticker
2. 45 #646 Ebony 5" 1-light candlestick, Gold Encrusted Blossomtime
3. 26 #1402/10 Tally-Ho 3 oz cocktail, etched Hunt Scene
4. 20 #1402/2 Tally-Ho 14 oz goblet, etched Catawba (grapes)
5. 55 #96 Mulberry Honeycomb 1/2 lb candy jar & cover, (factory flaw under bowl) signed
6. 45 #2 Crown Tuscan Seashell 7" Plate, Charleton enamel Roses and Gold
7. 100 Royal Blue decanter in Farber Duchess Lace holder (damage bottom of stopper)
- * 8. 60 Milkglass rolling pin, Marked Imperial Mfg. Co. Camb. Oh., Patent 1921, (2 minor cracks to wood fittings)
9. 35 #3400/100 Crystal 76 oz jug, Sterling overlay Grapes decor (scratched)
10. 30 #674 Peach-Blo 13" bowl, gold trim etched #732 (scratched) signed
11. 30 #3400/67 Light Emerald 12" celery & relish, etched Gloria, Cambridge label, scratches on bottom
- ✓ 12. 90 #73 Forest Green Mount Vernon 5" butter tub & cover, signed, hard to find
13. 65 #3400/647 Adonis cut 6" 2-light candlesticks (pair)
14. 50 #168 Amber 10" sandwich tray, etched Hunt Scene
15. 70 #3400/152 Forest Green 76 oz Doulton jug (scratched)
16. 20 #3400/116 Forest Green 14 oz mug (some inside rim chips) (5)
17. 15 #1402/100 Amber Tally-Ho cocktails, crystal stem & foot (5)
18. 7 #84 Mount Vernon 14 oz stein (chip)
- ✓ 19. 165 #1043 Light Emerald 8½" swan, Style I, signed
20. 165 #1612 Dolphin hurricane bases only, Charleton enamel Ivy and Gold (pair)
21. 125 #3450 Carmen Nautilus 28 oz decanter, crystal stopper
- ✓ 22. 275 #3500/57 Amber 8" 3-compartment candy box & cover, etched Rose Point, rare
23. 12/10 #3750 Ivy cut 5 oz ftd tumblers, Cambridge labels, (2) x
- ✓ 24. 300 #23 Everglades Pearl Mist (satin) 5" vase
25. 20 #3500/70 Amethyst 7½" 4-compartment relish
26. 1750 #97 Amber 6" candy box & cover, etched #725, gold trim wear
27. 25 #27 Everglades cream and sugar (pair)
28. 5 #497 Fleur-de-Lis cut 14 oz tumbler
29. 12.50 #84 Pristine 2 oz sherry
30. 25 #933 12" bowl, crimped edge, etched #760
- ✓ 31. 40 Crystal Doorknobs (2) with original fittings
32. 95 #31 Windsor Blue 8" Seashell oval ftd dish, (minor flake 1 foot) signed
33. 45 #1402 Royal Blue Tally-Ho 2½ oz handled tumblers (3)
34. 45 #1314 Gold Krystal ashtray on #1066 Crystal stem and foot
35. 45 #173 Peach-Blo 12" handled sandwich tray, etched #725, satin finish, platinum trim
36. 170 #513 Peach-Blo 13" Draped Lady flower figure in #673 Peach-Blo 13" flip bowl, (border etched), (set)
37. 15 #3400/10 Gold Krystal 11" handled sandwich tray (scratched)
38. 45 #3500/27 Ram's Head 8" square ftd bowl (scratched)
39. 55 #168 Azurite 10" handled sandwich tray, mint gold trim
40. 55 #2867 Helio 7½" candlestick (1)
41. 40 #402 Ebony 12" flared vase, Cambridge label
42. 80 #1043 Light Emerald 8½" swan, #1041 Light Emerald 4½" swan, #1040 Light Emerald 3" swan, all style I, (all chipped) (lot)
43. 80 #647 Moonlight Blue 6" 2-light candlesticks (1 base scratches) (pair)
- ✓ 44. 450 #1338 Carmen Mount Vernon 3-light stair step candlesticks (pair), rare
45. 5 #316 Peach-Blo Georgian sundaes (6)
46. 50 #319C Pink Georgian candy box and cover
- ✓ 47. 45 #319C Smoke Georgian candy box and cover
48. 12 #319 Crystal Georgian 9 oz tumbler
49. 30 #319 Royal Blue Georgian 9 oz tumbler, signed
50. 10 #319 Moonlight Blue Georgian 9 oz tumbler
51. 17 #319 Pink Georgian 9 oz tumblers (2) x 2
52. 7.50 #319 Amber Georgian 9 oz tumblers (4) x 4
53. 4 #317 Amber Georgian 5 oz tumblers (roughness) (3) x 2

35 530 #3 bird
85 721 3011 Nude 4½ oz 2 clear capite *#23

54. 10 #317 Mandarin Gold Georgian 5 oz tumbler
 55. 17 #317 Carmen Georgian 5 oz tumblers (2) * =
 56. 10 #317 Moonlight Blue Georgian 5 oz tumblers
 57. 15 #3175 Carmen Georgian sherbet
 58. 40 #1201 Carmen Georgian 2½ oz tumbler, signed
 59. 25 #1201 Light Emerald 2½ oz Georgian tumbler, signed
 60. 30 #52 Crystal Mount Vernon 40 oz decanter
 61. 40 #1236 Forest Green 7½" ivy ball, Crystal stem and foot (2)
 62. 40 #84 Amber Mount Vernon 14 oz stein, signed
 63. 35 #84 Forest Green Mount Vernon 14 oz stein
 64. 60 #3400 Crystal 2½ oz ftd tumbler, Ebony foot, heart & flower etching
 65. 30 #1626 Ebony cigarette lighter (split in metal cap)
 * 66. 25 W83 Milkglass Mount Vernon salt & pepper (pair)
 67. 25 #3500 Adonis cut low sherbets (2)
 68. 40 #1441 10" 2-light candelabra, no boheches (chip 1 edge)
 69. 14 #58 #6 Light Emerald ftd cocktails, gold encrusted floral border (6) (set)
 70. 45 #3400 Luncheon set: Appleblossom etching (except Ebony items) sugar and creamer, 6½" handled relish, 10" center handled server, 6 cups with Ebony saucers, 6 Ebony 8½" plates, 6-#3130 10 oz ftd tumblers Appleblossom with Ebony foot, most signed (28 pieces) (SET)
 71. 120 American Flint Glass Workers enamel badge (belonged to Oscar McCollum, Cambridge Glass worker)
 72. 12.50 #3060 Light Emerald 5½ oz tall sherbets, 2 different gold trims (2)
 73. 120 #3011 Gold Krystal Nude 4½ oz claret, optic bowl
 74. 300 #3011 Heatherbloom Nude 1 oz brandy, optic bowl
 75. 40 #1066 Amethyst 7" ivy ball, sun colored foot
 76. 50 #1506/2 Crown Tuscan 5" novelty basket, signed
 77. 22.50 #728 Moonlight blue ashtrays in Crystal Holder (nicks on 2 ashtrays) (set)
 78. 10.75 #496 Tall Joes, 1-Moonlight, 1-Gold, 1-Mocha, 1-Pink, 1-Tahoe, 4-Emerald, (9)
 79. 40 #1402/50 Forest Green Tally-Ho 74 oz tankard jug (line in handle)
 80. 200 #3011 Royal Blue Nude ashtray
 81. 105 #3500/44 Carmen 8" footed urn vase (2)
 82. 50 #47 Mount Vernon 11 oz decanter and (6) #87 1 oz cordials (set)
 83. 35 "Stackaway" Moonlight Blue ashtrays (4) on Farber stick base (set)
 84. 90 Amethyst Farber low cocktails (4) with Farber decanter and 14" tray (set)
 85. 125 #6004 Crown Tuscan 6" footed vase, mint gold encrusted Rose Point
 86. 30 P306 Lynbrook cut 6" candy box and cover
 87. 40 #1040 Crown Tuscan 3" swan, Style III
 88. 80 #1040 Ebony 3" swan, Style I
 ? 89. 120 #98 Amber 5" 3 compartment candy box and cover, etched #731
 90. 50 #87 Primrose 1/2 lb candy jar and cover (small chips under edge)
 91. 30 #1070 Amber 36 oz pinch decanter, original golf ball stopper
 92. 5x4 #3798 Cambridge Square cocktails, Platinum trim, Cambridge labels (4)
 93. 10x4 #1402/78 Tally-Ho 6 oz mugs (4)
 * 94. 45 W132 Milkglass Martha Washington 8½" footed fan vase
 95. 10x6 #3775 Roxbury cut 10 oz goblets (6)
 96. 5x7 #3775 Roxbury cut 6 oz tall sherbets (8)
 97. 12.50 #3400/38 Amethyst 12 oz tumbler
 98. 5x7 #36 Martha Washington 6 oz sherbets, 4 Cambridge labels, (8)
 ? 99. 50 #66 Mount Vernon cigarette holder with ashtray foot
 100. 5x4 #1 Mount Vernon goblets (4)
 101. 6x5 #24 Mount Vernon individual salts (5)
 102. 15 #11 Mount Vernon 7½" comport
 103. 4x3 #87 Mount Vernon 1 oz cordials (3)
 104. 12.50 #8 Mount Vernon handled sugar, Cambridge label
 105. 120 #3011 Amethyst Nude cupped comport
 106. 110 #3011 Forest Green Nude champagne

500-40

- 107. 7.50 #1402/100 Amethyst Tally-Ho low sherbets (5)
- 108. 5x3 #1402/100 Amethyst Tally-Ho 12 oz ftd tumblers (3)
- 109. 1.00 #280 Ebony 12" vase, gold border etched trim
- 110. 6.50 M157 Crystal 9½" deviled egg plate, Cambridge label
- 111. 8.50 #1136 Heron 9" flower figure frog
- 112. 4.00 #1 Mulberry keg only, no fittings
- 113. 3.00 #153 Arcadia 6½" shallow bowls (5)
- 114. 4.00 #609 Salad fork and spoon (pair)
- 115. 2.00 #3121 Forest Green 5½" across tall comport
- 116. 2.50 #106 Blue II 6" 4 part sweetmeat (mould dip on divider)
- 117. 8.50 #646 Amber Decagon 5" 1-light candlesticks, mint gold encrusted Portia (pair)
- 118. 1.00 #110 Mount Vernon 5" 2-light candlesticks (pair)
- 119. 4.00 #121 Mount Vernon 12½" belled bowl
- 120. 5.00 #1330 Carmen Sweet Potato vase
- 121. 27.50 #3400/75 Amber square cup & saucer, etched Appleblossom, signed
- 122. 3.00 #31 Crown Tuscan 8" oval shell, 4 footed, mint gold trim
- 123. 10.50 #518 Peach-Blo 8½" Draped Lady flower figure
- 124. 8.00 #856 Peach-Blo 11" flip bowl, etched Cleo, signed
- 125. 8.00 #2060 Wheat Sheaf Nearcut child's punch bowl & 4 cups (1 cup discolored) (set)
- *126. 8.75 #2351 Nearcut 19½" electric portable lamp with original 10" shade & prisms, rare
- 127. 3.00 #2651 Green Carnival Feather cracker jar base only (chips)
- 128. 3.00 #2693 Nearcut 9½" cake stand (chips on foot) signed
- 129. 1.00 #2760 Daisy Nearcut sherbet, satin flowers
- 130. 4.00 #2835 Nearcut 8" laydown cornucopia, ruffled
- 131. 2.50 #2766 Emerald Thistle Nearcut 5" nappies, gold trim worn, signed (2)
- 132. 4.00 #2635 Fernland Nearcut 2 quart jug, gold trim wear
- 133. 1.50 #2693 Nearcut 6¾" footed plate
- 134. 5.00 #2768 Fan Nearcut footed sherbet
- 135. 8.00 #2759 Nearcut 3 prong miniature candlestick
- 136. 2.44 #2760 Daisy Nearcut cups, satin flowers, signed (4)
- 137. 2.10 #2760 Daisy Nearcut 10½" celery tray
- 138. 2.00 #2760 Daisy Nearcut 5" bowl (chip)
- 139. 8.00 #2636 Nearcut 1 quart pitcher, 8½" tall
- 140. 1.50 #2651 Feather Nearcut goblet
- 141. 4.50 #2658 Nearcut 4 oz mug, red flashed, "Souvenir Pana, III" signed
- 142. 27.00 #2693 Nearcut 9½" bowl, signed
- 143. 1.00, 5.00 #2699 Buzz Saw Nearcut tumbler
- 144. 1.00 #2690 Nearcut 4 Lines creamer
- 145. 4.00 #2631 Marjorie Nearcut 1/2 gallon jug, (minor chip at bottom)
- 146. 2.00 #2635 Fernland Nearcut 8½" nappy
- 147. 132.50 Carmen blown insert in Farber gold etched Nude comport (edge smoothed)
- *148. 7.50 Windsor Blue Seashell 2¾" 3-footed shell with cigarette snuffer
- 149. 1.00 #3011 Gold Krystal Nude 1 oz brandy
- 150. 16.00 #3011/9 Tahoe Blue Nude 3 oz cocktail
- 151. 8.75 Crown Tuscan 12" display urn lamp, gold silk screen Rose Point is worn
- 152. 1.50 #3125 Gold Krystal 5 oz ftd tumblers, etched Deauville (5)
- *153. 22.50 #7606 Peach-Blo 9 oz goblet, narrow optic
- 154. 8.00 #3400/100 Amber 13 oz barrel tumbler, etched Diane
- *155. 2.25 #3400/100 Pearl Mist (satin interior) 13 oz barrel tumblers (4)
- 156. 1.50 #3400/16 Amber ftd cream and sugar, etched Appleblossom (pair)
- 157. 4.00 #3400/646 Amber Decagon 5" candlesticks, etched Diane (pair)
- 158. 9.00 #513 Crystal 13" Draped Lady flower figure
- 159. 8.50 #45 Helio 9½" comport
- 160. 4.00 #168 Avocado 10" center handled sandwich tray
- *161. 5.00 P341 Cambridge Arms 13" bowl
- 162. 12.50 #628 Cambridge Arms low candle base
- 163. 20.25 #1563 Cambridge Arms 4 candle arm (chip on bottom peg) (2)

~~7.70~~
~~21.00~~
~~2.00~~
~~1.74~~

164. 1.5 #1536 Cambridge Arms peg nappies (3)
 165. 3.4 #1633 Cambridge Arms 5" peg vases (4)
 166. 4.5 #1617 10" 2-piece hurricane lamps (1 minor chip) (2)
 167. 4.0 #638 Willow Blue Decagon 3-light candlestick (1)
 168. 3.0 #647 Gold Krystol Decagon 2-light candlestick (1)
 169. 3.10 #1567 11" 3-light candelabrum with (3) #19 bobeches and #7 prisms
 170. 12.50 #1 Crown Tuscan Seashell 5" plate, decor gone
 171. 1.00 #1402/29 Amber Tally-Ho 17½" cabaret plate, etched Valencia, rare
 X 172. .50 #3400/38 Amber 80 oz ball jug
 173. .30 #42 Everglades Pearl Mist (1 side satin) 6½" comport
 174. .30 #1040 Crystal 3" swan, Style II, signed
 175. .50 #1041 Crystal 4½" swan, Style III, signed (neck turned opposite usual way)
 176. 2.00 #3900 Mandarin Gold 13" cake stand, rare
 177. 12.50 #158 Crystal 9" Artichoke plate
 178. .30 #16 Seashell 7" comport, signed
 179. .85 #3400 Forest Green water pitcher, Farber base
 180. 7.50 Forest Green tumblers (ring neck), Farber holders, (6) x 5
 181. 1.55 #513 Peach-Blo 13" Draped Lady flower figure
 182. 1.45 #513 Peach-Blo 13" Draped Lady flower figure, satin finish (fracture inside base)
 183. .80 #518 Light Emerald 8½" Draped Lady flower figure
 184. 4.65 #627 Light Emerald Decagon 4" candlesticks, etched Cleo (pair)
 185. .65 #877 Light Emerald Decagon 11½" comport, etched Cleo
 186. .50 #1 Star 2½" candlesticks (6) in original box (set)
 X 187. 2.00 #863 Amber Decagon 10" cupped bowl 7" deep, etched Cleo (some scratches) signed, hard to find
 188. .45 #3400/1240 Lucia cut 12" oval bowl, 4 footed
 189. .70 #647 Lucia cut 6" 2-light candlesticks (pair)
 190. 1.75 SS10 Pearl Mist 5" Seashell Nude comport
 (191) .96 #3400/38 Royal Blue 80 oz ball jug, Crystal handle
 192. .50 #1041 Crystal 4½" swan, Style I, signed
 193. .70 #1041 Crystal 4½" swan, Style III (smooth chip on edge)
 194. 4.0 #3900/115 King Edward cut 76 oz jug and (1) 12 oz tumbler (lot)
 195. .76 #1955 Sunset 12 oz flared tumbler, excellent color
 196. 1.70 Rubina Honeycomb 8½" tall comport, 8½" across, signed
 197. .75 #3500/57 Crown Tuscan 8" 3-part candy box & cover, gold encrusted Rose Point
 198. .35 Jade 7" tall comport, 8¼" across
 199. .10 W84 Milkglass Mount Vernon tall salt shaker
 1. (200) 7.50 #1402/4 Carmen Tally-Ho 10 oz lunch goblets (6)
 201. .2 W62 Milkglass Martha Washington sugar
 202. .25 #902 Light Emerald 13½" oval handled tray
 203. .35 #488 Ivory 9½" oval handled tray
 204. .8 #3200 Cut Wild Rose 5 oz punch cup
 205. 6.00 #1 Crystal Twist muddlers (3)
 206. 22.50 #1 Amber Twist muddler
 207. 17.50 #2 Crystal Rooster muddlers (4)
 208. 12.50 #1371 Amber bridge hound (ear chip) Cambridge label
 X (209) 12.50 #1 Light Emerald keg set barrels (3)
 210. 1.60 #1341 Forest Green 1 oz mushroom cordials (4)
 211. 2.20 #3500/15 Carmen individual ftd creamer
 212. .10 #925 Peach-Blo Round after dinner cup and saucer (minor chip bottom of saucer)
 213. .15 #925 Light Emerald after dinner cup and saucer, etched #703, signed
 214. .22 #925 Crystal after dinner cup, gold rings decor, signed
 215. 4.00 #3500 Adonis cut 1 oz stemmed cordials (2)
 216. 5.00 #3775 Roxbury cut 1 oz stemmed cordial 2
 (217) 4.00 #3126 Royal Blue 1 oz stemmed cordials (3) ---
 218. 1.70 #1327 Mocha (favor vase) 1 oz cordial
 219. 1.70 #3130 Gold Krystol (all gold) 1 oz stemmed cordial

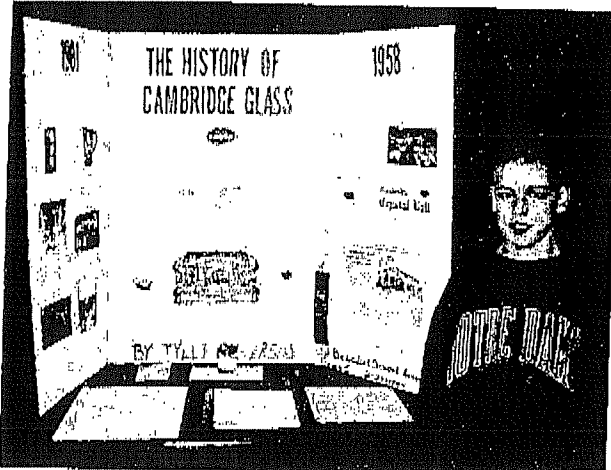
220. 3780 #3035 Carmen 1 oz stemmed cordial
 221. 15 #7966 Amber 1 oz stemmed trumpet cordial
 222. 2.30 #3400/71 Amber 3" 4-ftd nut cup, signed
 223. 12.20 #3400/71 Peach-Blo 3" 4-ftd nut cup, signed
 224. 15 #3400/71 Gold Krystol 3" 4-ftd nut cup, signed
 225. 15 #3400/49 Forest Green 3½" cranberry, signed
 226. 5.71 #34 Mandarin Gold Seashell 3" 3-toed shells (2)
 227. 180 #3400/4 Amethyst 12" ftd bowl, white gold encrusted Appleblossom, (slight edge wear), beautiful
 228. 12.50 #646 Amethyst 5" 1-light candlesticks (match above) (pair)
 229. 4.50/2.25 #702 Crown Tuscan miniature cornucopias (2)
 230. 1.25 #42 Mount Vernon 5" vase (plain top) (chip on 1 diamond point) (2)
 231. 1.50/2 #23 Mount Vernon finger bowls and liners (2)
 232. 22.50 Amber 5½" blown insert in Farber handled candy
 233. 20 Forest Green 5½" blown insert in Farber Nude comport (some chrome wear)
 234. 2.50 #3400/68 Cream and Sugar, Sterling Grapes decor (pair)
 235. 1.00 #1542 Lifesaver 20 oz decanter, original stopper
 236. 90 #1402/39 Royal Blue 34 oz decanter, Crystal handle and stopper
 237. 2.60 #3797/493 Cambridge Square 2¼" candlesticks (pair)
 238. 4.00 Jade 7" tall comport, 8¼" across, flat rim
 239. 10.80 #3011 Nude 7" cupped comport (slight scratches)
 240. 10.50 #3797 Cambridge Square goblets, Cambridge labels (1 has large reopening label) (2) 12, 5 8
 241. 4.00 #3400/4 Royal Blue 12" footed bowl (foot chip)
 242. 20 #3500/37 Crystal 7" high stem comport, handled
 243. 30 #1402 Carmen Tally-Ho Sherbet, signed Rockwell Sterling overlay, rare
 244. 9.50 Carmen pressed Rose Point cocktail, hard to find
 245. 11.50 Forest Green pressed Rose Point champagne
 246. 14.50 Royal Blue pressed Rose Point iced tea
 247. 4.60 #1069 Light Emerald goblet, golf ball variant stem
 248. 2.00 #3126 Gold Krystol 13 oz ftd iced tea, etched Portia
 249. 2.50 #3112 Royal Blue 7 oz champagne, bowl & foot blue, stem Crystal
 250. 4.50 Martha Washington paperboard easel display sign
 251. 130 #244 Helio 10½" service plate, beautiful heavy gold encrusted etched #703
 252. 3.50 #3400/1240 Gold Krystol 12" oval bowl, etched Appleblossom (scratched)
 253. 1.60 #3011 Emerald Nude stem ashtray
 254. 4.75 Mardi Gras 6" tall vase, 3½" at top, 6" wide, shape is rare
 255. 13.50 #1403 Rubina Honeycomb 5¼" comport, excellent color
 256. 0.50 #1403 8 oz pilsner, Light Emerald foot, unusual
 * 257. 15.00 #3500/44 Amethyst Japonica 8" ftd urn vase (nicks to enamel rim) extremely rare
 258. 22.00 #3500/42 12" urn lamp, gold encrusted Minerva (original fittings) with silk shade, rare
 259. 30 #1300 Crown Tuscan 8" footed vase, Cambridge label
 260. 6.50 #3400/78 Carmen 38 oz cocktail shaker, Crystal lid & handle (nicks on top edge, bruises on lid)
 * 261. 4.00 W54 Milkglass 32 oz jug (water pitcher)
 262. 2.50 #1956/1 Pistachio 10" hambone ashtray
 263. 22.00 #912 Peach-Blo round casserole and cover, etched #520 (minor rim nicks)
 264. 12.00 #910 Amber 8¾" oval covered dish, etched Cleo, rare
 265. 52.50 #3121 Gold Krystol 10 oz ftd tumblers, etched Wildflower (4)
 266. 11.60 #3143/51 Pistachio Gyro Optic 12 oz tumblers (6)
 267. 1.50 #3011 Royal Blue Nude table goblet
 268. 4.00 #3500/79 Crystal 3" ftd basket
 ? 269. 4.50 #3115 Crystal 3½ oz cocktail, Ebony stem and foot, etched #731 (3)
 270. 3.50 #3400/156 Royal Blue 12 oz decanter (pinhead on edge)
 271. 2.50 #167 Caprice 6" handled candy box and cover
 272. 9.50 #103 Caprice 12" celery, hard to find
 273. 1.50 #52 Caprice stick butter lid only, rare
 274. 5.00 #62 Caprice 12½" belled bowl, 4 footed

275. 96 #120 Caprice 6¾" 2 handled, 2 part relish
 276. 1270 #124 Caprice 8½" 3 part celery and relish
 277. 20 #131 Caprice 8" low ftd plate
 278. 15 #180 Caprice 5 oz tumbler
 279. 12.50 #300/2 Caprice 12 oz stemmed iced teas (4)
 280. 8.00 Caprice Reflector candlestick, rare
 281. 17.50 #136 Caprice 6" tall comport
 282. 15 #87 Caprice 2 oz mustard, no cover
 283. 170 #64 Caprice 9" 4-ftd oval bowl, hard to find
 284. 15 #33 Caprice 14" 4-ftd cabaret plate (slight scratches)
 285. 50 #201 Caprice ice bucket, original handle
 286. 115 #3550/76 Caprice epergne, complete
 287. 20 #207 Caprice cigarette box and cover, 3½" X 2¼"
 288. 20 #131 Caprice 8" low ftd plate, Sterling 25th Anniversary decor
 289. 80 #111 Caprice (all satin) 8" twin salad dressing bowl and liner, Sterling Lily of the Valley decor
 290. 40 #28 Caprice Alpine 14" footed plate, scratched
 291. 12.50 #3 Caprice Alpine 3½ oz pressed cocktail
 292. 22.50 #66 Caprice Alpine 13" crimped bowl, (feet chips)
 293. 45 #169 Moonlight Blue Caprice 6" heart, (bottom scratched) (slightly off color)
 294. 170 #74 Moonlight Blue Caprice 9½" long 3 light candlestick, rare
 295. 70 #40 Moonlight Blue Caprice individual sugar and creamer with #37 6" oval tray (set)
 296. 40 #184 Moonlight Blue Caprice 12 oz tumbler
 297. 20 #206 Moonlight Blue Caprice 3" triangle ashtray
 298. 50 #131 Moonlight Blue Caprice Alpine 8" low ftd plate
 299. 165 #126 Moonlight Blue Caprice 12" 4 compartment relish, rare
 300. 30 #148 Moonlight Blue Caprice 4½" handled bon bon, oval
 301. 15 #214 - #216 Caprice Ashtray set: Moonlight Blue, Crystal, Gold (set)
 302. 35 #300 La Rosa Caprice 10 oz ftd tumbler X 1 X 1 = 20
 303. 40 Amber Caprice 6" vase, plain top
 304. 35 Amber Caprice 5½" across vase, 4" tall, plain top
 305. 45 Amethyst Caprice 4¼" vase, plain top
 306. 45 Royal Blue Caprice 4¼" vase, plain top
 307. 35 #188 Amethyst Caprice 2 oz tumbler
 308. 200 #438 Rubina 8½" candlesticks, good color (pair)
 309. 30 #47 Helio 6¾" across mayo comport
 310. 135 Amber wide optic ftd lemonade pitcher and 6 mugs, signed (set)
 311. 250 #823 Light Emerald centerpiece (4 candle wells) with Light Emerald #512 Rose Lady flower frog (floral cut on base) (set)
 312. 85 #52 Amber Mount Vernon 40 oz decanter and (6) #22 matching 3 oz ftd tumblers (set)
 313. 100 #1321 Forest Green 28 oz decanter and (4) #7966 2 oz sherries (set)
 314. 90 #1 Carmen jigger stopper for Crystal pinch decanter, rare
 315. 10/10 #2 Crystal 4" Star candlesticks (2 pair)
 316. 100 #577 Moonlight Blue 8" Horn of Plenty
 317. 25 #3500/13 Forest Green sugar basket, original chrome handle
 318. 25 #3400 Amber tall decanter, Farber holder, faceted stopper
 319. 250 #865 Light Emerald Decagon cups and saucers, signed (3)
 320. 25 #31 Everglades 16" Tulips plate *30th colored*
 321. 25 #57 Light Emerald Wetherford 8" bowl, grey cut lines
 322. 32.50 #420 Light Emerald 20 oz tumble-up
 323. 65 #3400/156 Forest Green 12 oz decanter and (4) #1327 cordials: Pink, Amber, Forest Green, Amethyst (set)
 324. 17 #160 Amber Wetherford 10¼" handled sandwich tray, grey cut lines
 325. 35 #1236 Crown Tuscan 7½" ftd ivy ball, excellent color
 326. 45 #278 11" ftd vase, gold encrusted etched all over
 327. 35 #3400/48 Mandarin Gold 13" bowl, 4-ftd crimped (scratched)
 328. 130 #3139 Maryland cut 9 oz goblets (9)

329. 16 #355 Maryland cut 7½" plates (8)
 330. 22 #3400/200 Maryland cut 11" 3-part celery and relish
 331. 10 #3500/161 Maryland cut 8" low ftd plate
 332. 17.50 #3500/55 Maryland cut 6" ftd basket
 333. 15 #3500/47 Maryland cut 5" handled bonbon
 334. 17.50 #3400/1181 Maryland cut 6" 2-handled plate
 335. 12.40 #3400/90 Maryland cut 6" 2-part relish
 336. 20 #477 Maryland cut 9½" pickle
 337. 210 #440 Moonlight Blue 10" Star bowl, rare
 338. 30 #2 Moonlight Blue 4" Star candlesticks (pair)
 339. 10 Yardley jar, opaque, original plastic lid
 340. 15 Yardley sachet jar, opaque, original plastic lid
 341. 20 Yardley tiny jar, opaque, original plastic lid
 342. 20.60 Yardley tiny jar, pink satin, original plastic lid
 343. 15 #3077 Gold Krystal tall sherbets (2) 25,965 50
 344. 10 #4000/2 Cascade sherbets (2)
 345. 22 #3400/1176 Gold Krystal 8" square plates, signed (2)
 346. 2 #3400/62 Gold Krystal 8½" plate, signed (scratched)
 347. 5 #3400/62 Forest Green 8½" plate, signed
 348. 20 #815 Amber Decagon 8" plate, etched Cleo (2)
 349. 20 #3400/4 Amber 12" ftd bowl, (scratched, foot chips)
 350. 16 #3400/1176 Appleblossom 8½" square plates, signed (slight scratches) (2)
 351. 32.50 #279 Blossomtime cupped mayo (Martha blank), gold trim
 352. 475 #316 Blossomtime Apple candy box and cover, Carmen stem, rare
 353. 15 #3400/6 Candlelight 11½" cheese tray only (scratched)
 354. 55 #674 Chantilly 12" bowl, Sterling foot
 355. 20 #252 Chantilly sugar and creamer, Sterling feet (1 dent) (pair)
 356. 25 #1307 Chantilly 6" 3-light candlesticks (pair) /
 357. 45 #3121 Diane 5¼" blown candy box and cover, (pinhead nicks inside lid)
 358. 52.00 #3122 Diane 9 oz goblets (3)
 359. 75 Stradivarius Diane 10 oz goblets (3)
 360. 210 #3500/42 Diane 12" urn and cover
 361. 60 #68 Dresden etched 9 oz table tumblers (4)
 362. 16 #274 Lorna 10" bud vase (acid slip on base)
 363. 20 #3400/13 Portia 4 footed comport (mayo)
 364. 140 #648 Portia 5½" candlesticks with #27 bobeches & prisms (pair)
 365. 155 #3130 Portia bell, guaranteed original
 366. 70 #3400/4 Rose Point 12" 4-ftd bowl
 367. 160 #3121 Rose Point 10 oz goblets (8)
 368. 50 #3900/167 Rose Point 14" torte plate (scratched)
 369. 140 #3500/657 Rose Point 2-light Ram's Head candlestick (1)
 370. 100 #674 Rose Point 6" 2-light candlesticks (pair)
 371. 115 #3400/45 Rose Point 11" 4-toed bowl, fancy edge
 372. 110 #3500/71 Rose Point 7½" 3-compartment relish
 373. 26 #3106 Rose Point 9 oz ftd tumbler
 374. 25 #3900/1177 Rose Point salt and pepper (crack inside 1 top) (pair)
 375. 50 #86 Wedgewood etched 1 lb candy jar and cover
 376. 95 #3400/52 Wildflower 5½" covered butter
 377. 65 #555 Wildflower 7½" plate (scratched) 2 00
 378. 27.50 #3400/28 Wildflower 7" low comport, gold wear on edge trim
 379. 30 #3400/1180 Wildflower 5½" 2 handled bonbon, gold wear on edge trim
 380. 57 #3112 Ye Olde Ivy 7 oz tall sherbets (6)
 370 P 101 Wild Flower cocktail shaker

AUCTION - Continued from page 1

During the Friday evening Quarterly Meeting, Tyler Patterson, grandson of members Everett and Shirley Patterson, displayed a project that he had done about The Cambridge Glass Company for an academic fair at school. Tyler is a 5th grade student at St. Benedict Elementary school in Cambridge and did an outstanding job on the project. We would like to thank Tyler for donating his project to the museum.



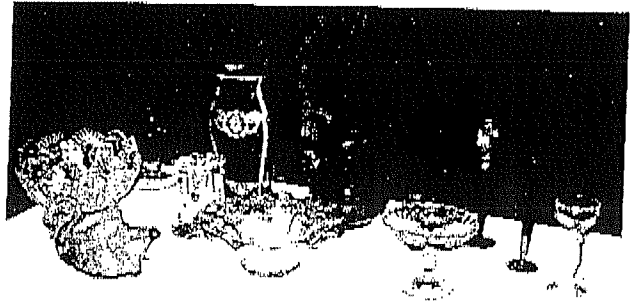
Membership Chairman, Jeff Ross, announced that we now have 1,426 members. Convention Chairman, Mark Nye, reported that the theme for the 1994 Convention will be "The Roaring 20s" as they relate to the glassware produced during that period. He also said that the long awaited Caprice Book will be ready by Convention.

The program Friday evening was a preview of the Auction, with pieces of particular interest being pointed out by Auction Chairman, Lynn Welker. Besides the



program, Lynn also conducted the Show and Tell portion of the evening. Show and Tell further illustrated the rich bounty of the Cambridge Glass Company, since the items shown in no way duplicated the wide variety of pieces in the Auction. A most unusual find was a pin with a glass bell attached, a souvenir of the Ameri-

can Flint Glass Workers convention in Bellaire. This was not manufactured by the Cambridge Glass Company, but was unusual nevertheless. The most unusual



piece of Cambridge glass was the 8" Swan done in orange, blue and green sprayed enamels. Or was the most unusual the #3011 Nude cocktail with Topaz bowl and Crown Tuscan stem and foot? Or perhaps the #3011 Pink Crackle ivy ball on Crystal nude stem and foot was most unusual? There were over 30 items in the Show and Tell, and each was unusual.

If you missed the Quarterly meeting and Auction, you missed a wonderful opportunity to see and perhaps acquire a special piece of Cambridge glass. We can now all begin looking forward to June and the Convention and Show. Make your plans now to attend since you will have another opportunity to see, and perhaps find, that one special piece that you covet.

[See related article on the President's Circle on page 20.]

✕ 1994 Auction List Corrections

(indicated on the Auction Results with an *)

- 26 - #98 Amber 5" 3 compartment candy box and cover, etched #731
- 53A - (added) #3 bird
- 53B - (added) #3011 nude 4½ oz claret, optic
- 89 - #97 Amber 6" candy box & cover, etched #725, gold trim wear
- 216 - quantity 2
- 217 - some chips
- 286 - one vase chipped
- 302 - quantity 2
- 320 - sun colored
- 356 - quantity 1, not pair
- 376A - (added) P101 34 oz cocktail shaker, etched Wildflower