



# Cambridge Crystal Ball

Published by the National Cambridge Collectors, Inc. as a resource which informs, invites and inspires people to encourage the continued preservation of the glass produced by the Cambridge Glass Company of Cambridge, Ohio for future generations.

Issue No. 573

ISSN 2474-5987

November/December 2023

Copyright © 2023 National Cambridge Collectors Inc., All Rights Reserved

## Stars, Stars, and More Stars

Star light, star bright. How many stars do you see tonight?



No 1 2½ in star candlestick

No 2 4 in star candlestick

No 3 5 in star candlestick



P.731 6 ½ in star ash tray



P.727 4 in star ash tray



No 4 11 in star candlestick with 1 ½ in hole



P.308 7 in star bowl



P.440 10 in star bowl moonlight

### What's Inside

Stars, Stars, and More Stars .....	1
President's Message .....	3
Holiday News from the Museum .....	4
A Look Back In Time .....	6
Zoom & Tell: Baskets .....	8
Photos from the Fall Educational Program .....	10
eBay Report .....	12
Museum Rack Card .....	14
Membership Corner .....	15
New Members .....	15
Volunteer Opportunity .....	15
NCC Membership Form .....	16
For Sale - NCC Publications .....	17
NCC Events .....	18

# National Cambridge Collectors, Inc.

PO Box 416 Cambridge, OH 43725-0416

## Board of Directors

	2024	
Cindy Arent	Larry Everett	Mike Strebler
	2025	
Ken Filippini	Freeman Moore	Christine Smith
	2026	
Julie Buffenbarger	Stuart Sandler	Frank Wollenhaupt
	2027	
Marti DeGraaf	Lindy Thaxton	Lynn Welker

## Officers

President	Freeman Moore
Vice-President	Julie Buffenbarger
Secretary	Stuart Sandler
Treasurer	Mike Strebler
Sergeant-at-Arms	Larry Everett

## Committees

Endowment	Membership
Finance	Technical Decision
Property	Digital Strategy
	Digital Preservation

## Member Services

### Vice President

Member Relations  
Convention  
Member Social Media  
Glass Dash  
Glass Show  
Study Groups  
Webmaster

Freeman Moore  
Freeman Moore, Membership Database  
Julie Buffenbarger & Christine Smith  
David Ray  
Larry Everett & Frank Wollenhaupt  
David Ray, Mike Strebler, Jack Thompson  
Jeannie Moore, Study Group Coordinator  
David Adams

## Development

### Vice President

Campaigns  
  
Events  
  
Projects  
Publicity

Julie Buffenbarger  
Ken & Jane Filippini, Annual Fund Directors  
Larry Everett, Director of the Heritage Society  
Lindy Thaxton,  
Lynn Welker, Auction Managers  
Susan Everett & Frank Wollenhaupt, Jewelry  
Convention: Jonathan Fuhrman

## Education

### Vice President

Crystal Ball  
Digital Archivist  
Programs  
Publications  
Media Productions  
Research

Jack Thompson  
Freeman Moore, Editor  
(open)  
(open)  
Larry Everett, Director of Publications  
(open)  
(open)

## Museum

### Vice President

Public Operations  
Facilities & Grounds  
  
Inventory Management  
Collections  
Museum Gift Shop  
  
Archivist  
Museum Social Media  
Community Relations

Cindy Arent  
Lindy Thaxton, Director of Public Operations  
Cindy Arent,  
Joe Miller,  
Lindy Thaxton  
Lindy Thaxton, Director of Inventory Management  
Lynn Welker, Director of Collections  
Cindy Arent, Gift Shop Manager  
Lynn Welker, Gift Shop Manager  
Lindy Thaxton  
Cindy Arent, Director  
Cindy Arent

## Administration

### Vice President

Accounting & Finance

Larry Everett  
Lisa Neilson, Office Manager

## MEMBERSHIP QUESTIONS?

Please send address changes to:  
Membership - NCC  
PO Box 416  
Cambridge, OH 43725-0416  
or by e-mail to:  
[membership@cambridgeglass.org](mailto:membership@cambridgeglass.org)



## CONTACT US

NCC Business Manager  
Phone: 740 432-4245

[businessmanager@cambridgeglass.org](mailto:businessmanager@cambridgeglass.org)



Freeman Moore, President

e-mail: [president@cambridgeglass.org](mailto:president@cambridgeglass.org)

Stuart Sandler, Secretary

e-mail: [secretary@cambridgeglass.org](mailto:secretary@cambridgeglass.org)

## Heritage Society

*Ensuring the preservation mission of the NCC through planned giving and estate bequests.*

Members of The Heritage Society are those who have included the NCC in their wills or estate plans, thus providing the organization with a secure future.

The mission of The Heritage Society is to foster smart estate planning and to assure that NCC is not forgotten as an important beneficiary. Any pledge is meaningful and appreciated.

All Cambridge collectors - both current and future - will benefit from, and be grateful for your support.

Let us know how we can help with your future plans.

### Museum:

National Museum of Cambridge Glass



Like us on Facebook

Member: Cambridge Glass/National Cambridge Collectors

NCC Website: [www.CambridgeGlass.org](http://www.CambridgeGlass.org)

NCC Museum Website: [www.cambridgeglassmuseum.org](http://www.cambridgeglassmuseum.org)

Miami Valley Study Group Website: [www.mvsg.org](http://www.mvsg.org)



# PRESIDENT'S MESSAGE

## *A Golden Year*



Here is mid-October, and it's time to think towards the end of the year.

I had an enjoyable time at the Fall Membership Meeting and Educational Program held October 21 in Cambridge Ohio. It was nice to meet fellow glass collectors and learn from Mike Strebler and Jack Thompson who presented their program on Rock Crystal Engravings. The pictures included this issue of the Crystal Ball don't do justice of the variety of items they had on display.

I have had the opportunity to talk with some of our members at recent glass shows. While it would be great to have everyone attend all of our events, the reality is that the majority of our members are not able to attend. I want to make sure NCC is reaching out, keeping all of our membership informed and involved. The Crystal Ball is the one information source that connects everyone. We will continue doing the "Zoom and Tell" sessions next year. I'll commit to have our March, June and October membership meetings on Zoom for distant members.

This has been a milestone year in NCC's history, which dates back 50 years ago to our founding in 1973. Our June convention had a display about our history, as well as the "Founder's Forum" session with several members from that first year. We made it through the first 50 years, now we need to develop a plan to guide us into the future.

Regrettably, NCC loses members every year. This could also be a reminder for you to review your estate planning. Do you have a plan for your glass collection? Read the information about our Heritage Society on page 2, and let me know if you have any questions.

Our nominating committee will be looking for candidates to run for the board of directors. What about you?

David Adams has been the NCC webmaster for many years. Website technology has changed over the years.

The board approved hiring an outside firm to create an updated and integrated version of the website. Our website contains a lot information yet it needs to be easily accessible to people using smart-phones. We need to make it visually appealing and easy-to-use, helping us connect to a larger audience. We reach a lot of non-members via Facebook™. We're working on improving our digital connections and you should see the results soon.

### *What's coming?*

Enjoy the holidays! If you decorate with Cambridge glass, consider sharing photos with other members by sending .jpg files to the editor.

January will be here soon, and that means reading over the auction listing that will be published in the January Crystal Ball. So, consider making plans to join us in-person for the March auction.

What's on your Cambridge "wish list" for this year and beyond, and how can we help?

Best wishes for a happy and safe holiday season from all of your NCC friends.

Sincerely,

Freeman Moore  
[president@cambridgeglass.org](mailto:president@cambridgeglass.org)



# Holiday News from the Museum

By Cindy Arent

The museum has been very busy this fall. In addition to the many visitors, we have also been fortunate to host tour groups and have been off site speaking and spreading the word about Cambridge Glass.

In addition to regular visitors, we had three groups in October. The Medina Ohio Teachers visited on October 5<sup>th</sup> and tremendously enjoyed their visit. Again, this year, we hosted the Cambridge Area Chamber of Commerce Youth and Adult Leadership Groups.

Preparations for the museum's extended season are complete, so it's time for the Holiday Season! The National Museum of Cambridge Glass will be open special holiday hours during Dickens Victorian Village. The museum will be decorated for the season and volunteers and staff will be dressed in Victorian attire. If you are looking for a special gift made in Cambridge, Ohio, visit the museum gift shop where you'll find genuine Cambridge Glass. The gift shop also features Jewelry and Cambridge Ornaments made from slightly damaged Cambridge stemware.

For the first time, we will be handing out chocolate at the Museum during the Dickens Victorian Village Chocolate Walk on November 8<sup>th</sup>. 350 tickets will be sold and people will arrive at the Museum between 5:00 and 8:00 to pick up their chocolate. Mosser Glass will also be at the Museum to hand out their treats. We are excited for this event!

Ornament sales have been doing very well! Lindy Thaxton and I made 150 ornaments this year and have already shipped to Texas, Florida, California and Ohio. Many people saw the Facebook post and called the Museum with their requests.

We enjoyed seeing several members at the October meeting and hope to meet many more at the Museum before the 2023 season ends. If you want to order any special gifts, just give us a call and we will be glad to help. Photos can be sent to you by text and we ship USPS.

Best wishes for a safe & healthy Holiday Season! ■



The Cambridge Area Chamber of Commerce Youth Leadership group visited the Museum in October. The group represents four area high schools; Cambridge, Rolling Hills, East Guernsey and John Glenn. Museum volunteers with the group are Lindy Thaxton, Marilyn McKelvey, Diana McMahon, Sharon Bachna and Cindy Arent



Cambridge ornaments are a very popular gift this season. In addition, many people collect vintage ornaments.



We are definitely not Amazon, but we do our best shipping from the Museum kitchen. A few customers have even called to tell us how much they appreciated our gift boxes and bows.

I love taking photos from the Museum Camera System. This one shows Sharon Miller demonstrating how to make a fall arrangement to a tour group using a Cambridge bowl and draped lady.





# A Look Back In Time

By Jack Thompson



It's been a successful 50<sup>th</sup> Anniversary of the National Cambridge Collectors. We've looked back on many great memories of the last 50 years. A highly successful auction and convention brought many of us together to celebrate. As this year comes to a close, I would like to conclude this series of "A Look Back In Time" with some additional final thoughts.

Fund-raisers - NCC has had numerous fund-raisers over their 50-year history including the Scotty Dogs mentioned in the September Crystal Ball. The first fundraising effort was initiated in May, 1973, with the reissue of the Caprice 22 - 8 1/2" Salad Plate in crystal. Produced by the Imperial Glass Company, 500 were sold within a month, and another 112 were sold out soon thereafter. The monies raised helped support the infant organization. This also started NCC down the path to realizing its goal of a Cambridge Glass Museum. In April, 1974, as a follow-up, it was announced that this plate would be made in blue. This time 2000 plates would be produced by Imperial.

**Announcing**  
THE  
SECOND EDITION  
OF THE  
**Annual**  
**NATIONAL CAMBRIDGE**  
**COLLECTORS**  
**Commemorative Plate**

---

ONLY 2000 ISSUED

8 1/2" "Antique Blue" Caprice Plate with Cambridge Glass Co. seal and our organizational name in center.

Dated and marked with Imperial Glass Co. hallmark

\$6.00 each  
plus \$1.00 postage & handling

ORDER FROM  
NATIONAL CAMBRIDGE COLLECTORS, Inc.  
P. O. Box 146, Cambridge, Ohio  
43725

**Announcing**  
THE  
**Limited First Edition**  
OF THE  
**Annual**  
**NATIONAL CAMBRIDGE**  
**COLLECTORS**  
**Commemorative Plate**

---

8 1/2" Crystal Caprice Plate with Cambridge Glass Co. seal and our Organizational name in center

---

Dated and marked with Imperial Glass Co. hallmark

---

\$ 6.00 each  
plus 50¢ handling and postage

---

ORDER FROM  
NATIONAL CAMBRIDGE COLLECTORS, INC.  
P. O. Box 121, Cambridge, Ohio  
43725

---

\*\*\* Limit 5 per order \*\*\*



**NCC Auction** – Coming in 2024 will be the 50<sup>th</sup> anniversary of the first NCC Auction held August 25, 1974, at the Holiday Inn in Cambridge. 298 lots from 27 consignees brought \$6,137. That’s \$42,223 in today’s dollars. The highest priced item was the #500/178 Rubina Vase at \$210. That’s \$1449 in today’s dollars. Wish I could go back in time and sell a few. It’s not the 50<sup>th</sup> auction, as there was not one in 2020 due to Covid. That will come in 2025. Mark your calendars now for March 15<sup>th</sup> & 16<sup>th</sup> and plan to attend. It’s a great opportunity to add some nice pieces to your collection and support NCC in the process. Auctions are just plain fun anyway.

**NCC Convention** – The first convention was held April 26, 27 and 28, 1974 at the Cambridge Holiday Inn and the National Guard Armory. Coming in 2024 will be the 50<sup>th</sup> anniversary of that first convention. Mark your calendars now for June 27<sup>th</sup>, 28<sup>th</sup> and 29<sup>th</sup> and plan on coming to Cambridge. It will be a great time.

I’m looking forward to NCC’s 51<sup>st</sup> year.



#500/178, 10 in Vase,  
Rubina



DISPLAY OF CAMBRIDGE GLASS AT THE NATIONAL CONVENTION

# Zoom & Tell: Baskets

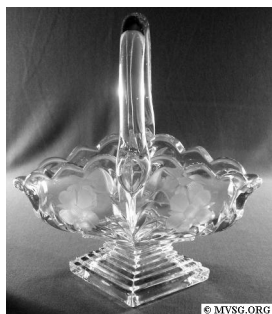
by David Ray

The theme of the September Zoom & Tell program was Cambridge baskets. Baskets were introduced during the Near Cut era and continued until the factory closed in 1958. Long-time basket collector, Lisa Strebler, led the September program. Lisa's main collection focuses on the #119 baskets, although she has added several other Cambridge baskets to her collection over the years.

The two most prolific basket lines produced by the Cambridge Glass Company are the #119 basket and #319 Georgian basket. Baskets produced by Cambridge range in size from 4" to 15" tall, but most baskets were measured by the diameter of the basket, not its overall height. Baskets can be found in a variety of colors and etchings, but most of the etched baskets I have seen are crystal. In nearly 35 years of collecting Cambridge glass, I have seen two Pink 119 baskets etched Gloria and one Amber 119 basket etched Apple Blossom.

During the Near Cut era, baskets were either made in crystal, Ebony or Early Dark Emerald. Some of the early style ebony baskets were decorated with the hand-painted pink and orange roses enamel decoration. These baskets are extremely rare and nearly impossible to find. Three of the Near Cut baskets shown below were decorated with a gray wheel cutting.

During the 1920's, the design of the 119 basket was introduced. The button decoration applied to the handle where it connects to the basket is a very distinguishing feature. The earlier style baskets have a similar shape, but do not possess this distinguishing "button" feature. During the Zoom program, there was some discussion about the rounded handle versus the squared-off handle. No documentation has been found to explain this difference, but consensus is that it was the glass worker's preference. The square handle is shown on the crystal Wildflower basket. The 119 style was produced in 4 sizes: 7 -inches (119), 8-inches (118), 9-inches (121) and 10-inches (120). The 7-inch 119 style is the most common while the other sizes are somewhat difficult to find.





Other basket styles were also produced by Cambridge. The larger size baskets were used as decorative vases, but the smaller sizes likely served other purposes. The production of the Primrose and Amethyst baskets shown below was different than other baskets which had applied handles. The Primrose and Amethyst baskets were formed from a mold that already possessed the handle, but the handle was not connected in the middle. After the basket came out of the mold, a glass worker was required to connect the two halves of the handle at the highest point. Most Heisey baskets were produced using this method.



Cambridge also used the term “basket” to describe certain candy dishes or bon-bons, such as the 3500/55 6" footed basket. Although the September Zoom & Tell program did not focus on these baskets, Cambridge did produce a variety of candy dishes in this style.

The November Zoom & Tell program will be held on Tuesday, November 14 at 8:00 PM EST. The theme is vases. If you missed any of the previous Zoom & Tell programs, you can email Freeman Moore at [membership@cambridgeglass.org](mailto:membership@cambridgeglass.org). ■



# Photos from the Fall Educational Program: Rock Crystal Engravings

contributed by David Ray





Welcome to the eBay Report, featuring Cambridge glass items that sold on eBay over the past month. Selling prices are rounded to the nearest dollar. If no color is mentioned, assume that the piece or part of it being discussed is crystal. If I refer to an auction as "incognito," that means that the seller did not know he or she was offering Cambridge glass, and didn't use the word "Cambridge" in the description. I also mention if a listing was a Buy It Now offering, as opposed to an auction style listing. I think it's important to distinguish between the two, as the price for an auctioned item reflects competitive bidding (or no competition, if it sells for the opening bid.) Here we go:

**Rose Point:**

A pair of Dolphin Candle holders with Rose Point hurricane shades and plain bobeches and prisms sold for \$350 on the first bid. A chip on one prism was noted.



A 3 1/2" 3500/125 ash tray, listed as a coaster, part of the 5-piece graduated nested ash tray set, was listed at \$32.00 and sold for an undisclosed offer.



**Statuesque Line 3011:**

A Seashell 7 1/2" Statuesque compote in Crown Tuscan sold at \$51.00 with two bids. This listed in the Seashell line because of the shell plate on top.



A pair of Statuesque cocktails with crystal bowl and ebony stem sold for \$89.99.



**Etchings:**



An amber Rosalie etched #1263 oil cruet, 6 1/2" tall, sold for \$65.00.

A rare pair of 1301 Crown Tuscan lamps made from 10" Footed Vase, etched Diane and gold encrusted was listed for \$395 and sold for an Undisclosed Best Offer.



A clear 8 3/4 candy jar and lid, line 7606, with the Bordeaux etch was listed at \$69 and sold at an undisclosed best offer. Bordeaux is a seldom seen etch that features a beautiful basket of flowers.



An ice bucket with etched flowers turned out to be the 3600/674 Martha ice pail with Chantilly etching. It was noted as Cambridge and was listed for \$99.50 and sold for \$64.67.



Four "lavender" 3035 6 oz. 6 1/2" tall sherbets, actually Heatherbloom etched Rosalie, were listed for \$229.00 and sold for an Undisclosed Best Offer. Some damage was noted in the lot.



A #244 10½" Service Plate, with E715 Willow etch in blue enamel, sold for \$52.00 with 2 bids. A couple of light scratches were noted.



A Crown Tuscan #1228 pillow vase with Chintz etching and gold encrusted sold for \$165.00. It had the Crown Tuscan stamp on the bottom.



An exquisite etched Art Deco pedestal bowl and underplate, #533 Mayonnaise Set in pink with gold rim was listed. The dealer was not able to identify the etching, but the plate was marked

with the Triangle C. The etching is the Angel etching that was featured on cover page of the Nov/Dec 2022 Crystal Ball. It is non-cataloged etching #1014. It was listed for \$60.00 and sold for \$51.00.

A "Rare Antique Fostoria Etched Lavendar Wisteria Footed Bowl" is actually the Cambridge 3400/4 12" 4-toed flared bowl in Heatherbloom with the Diane etching. It was listed for \$75.00 and sold with 3 bids at \$123.55. Cambridge collectors know to look in the other areas!



### Tableware:

Just in time for fall tablescapes, a set of 3122 stems with amber bowls and crystal stems sold for \$219.90 (with free shipping). The set was listed as 6 water goblets and 5 cocktails.



A pair of 3400/99 oil bottles in Royal Blue with keyhole stoppers sold for \$85.00. They were listed as 3 ounces (which measures at 3 ¼" tall) but the Item Specifics listed them at 6 ounces and 4 ¾". So not sure what size these are but either way; these are a nice pair of 3400 oil bottles.

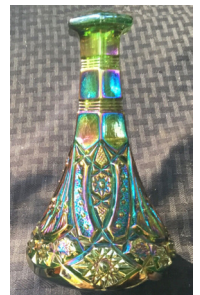


### NEARCUT:



A clear Nearcut #2660/131 12" whiskey decanter and stopper in Wheat Sheaf sold at \$49.96 with four matching 2 5/8" matching shot glasses.

A Nearcut Wheat Sheaf cologne bottle in green carnival with very nice iridescence, minus the stopper, was listed for \$150 and sold for an undisclosed best offer.



### Other Great Glass



A rare #522 two bun Geisha in Light Emerald, and listed as Uranium, was listed by an Australian seller and sold for \$948.03 in American dollars.

A pair of #50 8 ½" Dolphin candle holders in Crown Tuscan sold for \$333.00.



That's it for now. I enjoy browsing eBay, but I might miss something interesting. If so, let me know. Until next time, happy Cambridge hunting!

# Museum Rack Card



*Gift Shop featuring genuine Cambridge Glass.*

**General Admission is \$6**  
**Seniors \$5 • AAA Members \$5**  
**NCC Members and children 12 and under FREE**

**The Museum is accessible to the handicapped.**  
**Parking is FREE.**

**Hours of Operation:**

The Museum is open April thru October:  
 Wednesday - Saturday 10 a.m. - 4 p.m. Sunday Noon - 4 p.m.  
 (closed Easter & July 4th)

136 S. 9th Street; P.O. Box 416; Cambridge, OH 43725  
 740-432-4245 | [www.CambridgeGlassMuseum.org](http://www.CambridgeGlassMuseum.org)



*The Museum is easy to find; just a short drive from I-70 or I-77*



The National Museum of Cambridge Glass houses the world's most extensive collection of Cambridge Glass, in addition to the molds, tools and equipment used to manufacture handmade glassware. The Edna McManus Shepard Education Center permits hands-on learning opportunities making the museum a world class center for the appreciation and study of elegant, handmade glass produced by The Cambridge Glass Company, 1902 – 1958.



*The National Museum of Cambridge Glass is owned and operated by the National Cambridge Collectors, Inc. (NCC); a non-profit corporation founded in 1973 to encourage and support the collecting and study of Cambridge Glass.*

## National Museum of Cambridge Glass

136 S. 9th Street; P.O. Box 416; Cambridge, OH 43725  
 740-432-4245 | [www.CambridgeGlassMuseum.org](http://www.CambridgeGlassMuseum.org)



**CAMBRIDGE**  
**GUERNSEY COUNTY**  
 Visitors & Convention Bureau

*This rack card made possible through the support of a grant from the Cambridge/Guernsey County VCB. VisitGuernseyCounty.com • 800-933-5480 627 Wheeling Ave., Cambridge, OH 43725*

## Membership Corner

The Membership Committee welcomes two new members – Vicki & Jon Haley. Thank you for joining us! We always welcome members to our committee, so please let us know if you would like to participate.

It's becoming a tradition for NCC members who attend the Michigan Depression Glass Society show in Dearborn to meet for lunch after shopping. The show is Saturday, November 4 at the Ford Community & Performing Arts Center, 15801 Michigan Avenue in Dearborn. We meet for lunch at Ford's Garage, 21367 Michigan Avenue, Dearborn at 12:30. If you plan to go to lunch, please contact me at [Membership@CambridgeGlass.org](mailto:Membership@CambridgeGlass.org) and I will make a reservation for the group.

Beginning with the next issue of the Crystal Ball, we will include a Member Spotlight feature in the Membership Corner. Keep looking here to read about our members and consider being in the Spotlight in a future issue!



## New Members

Hannah Waters

FL

*Help spread the benefits of being a  
"Friend of Cambridge"*

## Recent Finds



3140 Stemware: Footed Sherbet, Hot Coffee Glass, and 10 oz. Footed Tumbler

## Volunteer Opportunity

We could use help with using Social Media to reach new collectors. We are active on Facebook, however our admin could use a backup person.



Maybe we need to rethink how we are using Facebook? Maybe you know some tricks and techniques of Facebook that we have not been using. Do you have any experience using Facebook to market to groups and track results? Are there additional social media platforms such as Instagram, X (formerly known as Twitter) or others you can help us with? Do you have ideas on how to connect with the Gen Z population? This could be a position for someone wanting to try a new experience. We'll help you as much as possible, and make it easy for you to do remotely.

If interested, please contact Freeman Moore for more information.

[president@cambridgeglass.org](mailto:president@cambridgeglass.org)

Recruit  
and  
Retain

Give this page to a friend



The National Cambridge Collectors  
P.O. Box 416 ~ Cambridge, Ohio 43725

“FRIENDS OF CAMBRIDGE” MEMBERSHIP

The National Cambridge Collectors, Inc. (NCC) is a non-profit organization dedicated to the education and preservation of the great work of the Cambridge Glass Company. Founded in 1973, we depend on the financial support of our members, who we call **Friends of Cambridge**, for the majority of our operating budget. Won't you consider becoming a Friend of Cambridge?

Friend #1 \_\_\_\_\_

Friend #2 \_\_\_\_\_

Friend #3 \_\_\_\_\_

Continue on reverse if needed - indicate any children

Address \_\_\_\_\_

City/State/Zip \_\_\_\_\_

Email Address (required) \_\_\_\_\_

Phone Number \_\_\_\_\_

Crystal Ball newsletter delivery: \_\_\_ email (color) \_\_\_ paper (black & white) \_\_\_ both

Glass collecting interest: \_\_\_\_\_

Include my information in the Membership Directory: \_\_\_ Yes \_\_\_ No

*(The Membership Directory is only available to other NCC members)*

New Member? (Y/N) \_\_\_ or Renewal? \_\_\_ If renewal, Member #s \_\_\_\_\_

*Levels of Membership*

___ Patron	\$ 35	___ Mardi Gras Level	\$ 200
___ Century Level	\$ 100	___ President's Circle	\$ 1,000
___ Japonica Level	\$ 500		

*All members receive the Crystal Ball, free Museum admission and 10% off any book/DVD purchases, President's Circle includes Convention registration for two members in the household and one free copy of any new NCC publication.*

All memberships are renewed annually via The Annual Fund mailing in late March/early April. All Annual Fund gift recognition levels are per household and include membership for everyone within the household 18 and older. Each household will receive a subscription to the Crystal Ball newsletter, unlimited admissions to the museum, and rights to vote in elections for the Board of Directors and discounts on NCC books. NCC is a 501(c)(3) organization and Annual Fund gifts are allowed as a tax deduction under Section 170 of the Internal Revenue Code. Contact your tax advisor for your individual situation.

Return this form with check or money order payable to NCC, Inc. at the above address.  
And always visit us at [www.cambridgeglass.org](http://www.cambridgeglass.org) to see what's new!



# For Sale - NCC Publications

**Published by NCC • Members receive a 10% discount**

TITLE	REGULAR PRICE	MEMBER PRICE
<b>1903 Cambridge Glass Catalog reprint</b> 106 page reprint, paperback.	\$5.56	<b>\$5.00</b>
<b>1910 NearCut Catalog Reprint</b> 108 pages, paperback, no price guide	\$14.95	<b>\$13.45</b>
<b>1927-29 Catalog Reprint</b> 66 pages, paperback, no price guide, includes identification guide	\$9.95	<b>\$8.95</b>
<b>1930-34 Catalog Reprint</b> 250 pages, paperback with 2000 price guide	\$14.95	<b>\$13.45</b>
<b>1930-34 Catalog Index</b> Index for above	\$2.00	<b>\$1.80</b>
<b>1940s Cambridge Glass Catalog reprint</b> 613 page reprint, 3 hole punched	\$19.95	<b>\$17.95</b>
<b>1949-53 Catalog Reprint</b> 300 pages, paperback, no price guide	\$19.95	<b>\$17.95</b>
<b>Cambridge Rose Point – A Collector’s Guide 2018</b> color, spiral bound	\$29.95	<b>\$27.00</b>
<b>Cambridge Rose Point – 2nd Edition 2007</b> 146 pages, paperback, no price guide	\$19.95	<b>\$17.95</b>
<b>Caprice</b> 200 pages, paperback, no price guide	\$19.95	<b>\$17.95</b>
<b>Decorates</b> 136 pages, paperback, no price guide	\$14.95	<b>\$13.45</b>
<b>Etchings 2nd Edition 2006</b> 102 pages, paperback, no price guide	\$17.95	<b>\$16.15</b>
<b>Etchings: Blossomtime</b> 26 pages, paperback, no price guide	\$7.95	<b>\$7.15</b>
<b>Etchings: Candlelight</b> 30 pages, paperback, no price guide	\$7.95	<b>\$7.15</b>
<b>Etchings: Chantilly</b> 44 pages, paperback, no price guide	\$7.95	<b>\$7.15</b>
<b>Etchings: Diane</b> 53 pages, paperback, no price guide	\$7.95	<b>\$7.15</b>
<b>Etchings: Elaine</b> 64 pages, paperback, no price guide	\$7.95	<b>\$7.15</b>
<b>Etchings: Portia</b> 57 pages, paperback, no price guide	\$7.95	<b>\$7.15</b>
<b>Etchings: Wildflower</b> 42 pages, paperback, no price guide	\$7.95	<b>\$7.15</b>
<b>Rock Crystal Engravings</b> 119 pages, paperback, no price guide	\$17.95	<b>\$16.15</b>
<b>Rock Crystal Engravings (Listings)</b> Companion to above; lists all pieces in all patterns	\$9.95	<b>\$8.95</b>
<b>Other:</b>		
<b>Cambridge Ohio Glass in Color</b> by Mary, Lyle and Lynn Welker 30 pages, color	\$6.61	<b>\$5.95</b>
<b>Reflections</b> by Degenhart Paperweight & Glass Museum 45 pp	\$5.56	<b>\$5.00</b>

## How to Order by Mail or from the NCC Website

Send orders to:  
NCC • PO Box 416 • Cambridge, OH 43725

OHIO RESIDENTS PLEASE ADD 7.25% SALES TAX

SHIPPING:  
\$8.00 FOR THE FIRST PUBLICATION  
\$2.00 FOR EACH ADDITIONAL ITEM

Please include your name, complete mailing address and your phone number or e-mail address.

Payments by check or Money Order only, payable to NCC

Books may also be purchased on the NCC website,  
[www.cambridgeglass.org](http://www.cambridgeglass.org).

available on  
**amazon**kindle

The following books can be purchased on Amazon and downloaded to your Kindle device



Cambridge Glass  
Colors



Cambridge Rose  
Point

## NCC Events

\*\*\*\*\*

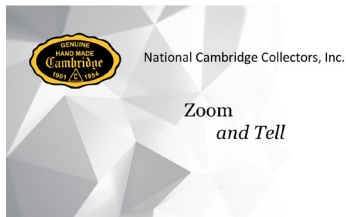
### March Meeting and Auction

March 15-16, 2024

\*\*\*\*\*

### 2024 NCC Convention

June 27-29, 2024



Contact [membership@cambridgeglass.org](mailto:membership@cambridgeglass.org) if you don't get the monthly email with the Zoom information.

November 14 Vases

December 19 Things with Lids

## Member Benefit

Each NCC household is allowed one free 20-word classified ad in the Crystal Ball per calendar year as part of their membership. This can be a "For Sale" or "Wanted" type of classified ad. Submit your ad by email to [editor@cambridgeglass.org](mailto:editor@cambridgeglass.org)

## CLASSIFIEDS

What are you looking for?

### November 4-5, 2023

Michigan Depression Glass Society 50th Annual Show & Sale  
Ford Community & Performing Arts Center  
15801 Michigan Avenue  
Dearborn, Michigan  
<https://www.michigandepressionglass.com/>

### November 4-5, 2023

National Duncan Glass Society presents  
Fall Antiques & Collectibles Sale  
Washington County Fair Grounds  
2151 N. Main St.,  
Washington, PA 15301  
<https://duncan-miller.org/>

### November 10-12 2023

Alabama Classy and Sassy Glass Show  
The Anderson Center  
201 Bayles Street  
Anderson, AL 35610  
[https://www.facebook.com/  
Alabama-Classy-and-Sassy-Glass-Show-105304294626389/](https://www.facebook.com/Alabama-Classy-and-Sassy-Glass-Show-105304294626389/)

### November 17-18, 2023

68th Annual Fall Eastern National Antique Show & Sale  
Carlisle Expo Center  
100 K St.  
Carlisle, PA  
<https://easternnationalantiques.com/>

### January 20-21, 2024

Cartersville Glass Show  
Cartersville Civic Center  
425 W. Main St.  
Cartersville, GA  
[doubleupromotions@gmail.com](mailto:doubleupromotions@gmail.com)

### January 27-28, 2024

Collectors of Depression Glass-Jacksonville, Florida  
49th Antique and Depression Glass Show & Sale  
Fraternal Order of Police Building  
5530 Beach Blvd  
Jacksonville, FL  
<http://www.depressionglassclubjax.com/>

### February 3-4, 2024

The South Florida Depression Glass Club's 50th  
Vintage American Glass and Pottery Show & Sale  
Tamarac Community Center  
8601 West Commercial Blvd  
Tamarac, FL 33321  
<https://sfdgc.com/>



# DEALER DIRECTORY

Dealer Directory - \$24 for 12-months, size limited by box (see below). Includes listing on NCC website. Electronic submissions should be emailed to: [editor@cambridgeglass.org](mailto:editor@cambridgeglass.org)

## Advertising Rates:

1/8 page \$15      1/4 page \$20  
1/2 page \$30      Full page \$50

Mailed submissions and all payments should go to PO Box 416, Cambridge, OH 43725. Deadline is 10th of preceding month. Ads must be paid in advance. Show listings are FREE; send info to PO Box or e-mail address 60 days before event.

<p style="text-align: center;"><b>Max Miller</b> <b>Elegant American Glassware</b> <a href="http://www.maxmillerantiques.com">www.maxmillerantiques.com</a></p> <p>The Market Place 10910 Katy Freeway.      713-410-4780 Houston TX 77043      <a href="mailto:mmxglass@aol.com">mmxglass@aol.com</a></p>	<p style="text-align: center;"><b>ISAACS ANTIQUES</b> (740) 826-4015</p> <p style="text-align: center;">↔ located in ↔ <b>Black Cat Vintage LLC.</b> <b>637 Wheeling Ave.</b> <b>Cambridge, OH 43725</b> <b>(740) 995-8370</b></p>
<p style="text-align: center;"><b>Glen &amp; Carolyn Robinson</b> <b>White Rose Antiques</b> Specializing in Depression Era Glassware</p> <p style="text-align: center;"><b>2454 McFarland Road</b> <b>York, SC 29745</b></p> <p>803-684-5685 <a href="mailto:gandcrobinson@aol.com">gandcrobinson@aol.com</a> <a href="http://whiteroseglassware.com">whiteroseglassware.com</a></p>	<p style="text-align: center;"><b>MARGARET LANE ANTIQUES</b></p> <p><b>2 E. Main St. New Concord, OH 43762</b> Lynn Welker      (740) 705-1099</p> <p>Cambridge Glass Matching Service Hours: Mon-Fri 10-12 AM, 1-5 PM or by appointment</p>
<p style="text-align: center;"><b>CRYSTALLINE COLORS</b> <i>Cambridge • Fostoria • Elegant Glass</i> Booth and Showcases in the <b>Medina Antique Mall</b> Medina, OH (I-71, exit 218)</p> <p style="text-align: center;">Lynne R. Franks 216-661-7382</p>	<div style="border: 1px solid black; padding: 5px;"> <p style="text-align: center;"><b>Connecting Buyers &amp; Sellers!</b></p> <p style="text-align: center;">Tell us what you are looking for and we help find it.</p> <p style="text-align: center;"><b>CAMBRIDGE GLASS.US</b></p> <p style="text-align: center;">P. Snyder 740-601-6018</p> <p style="text-align: center;"><b>E-Mail and Find Your Glass!</b></p> <p style="text-align: center;"><a href="mailto:psnyder@cambridgeglass.us">psnyder@cambridgeglass.us</a> <a href="http://www.cambridgeglass.us">www.cambridgeglass.us</a></p> <p style="text-align: center; font-size: small;">When you are searching for Cambridge glass, email your request and it is emailed to all members and dealers. P. Snyder, 1500 Edgewood Dr., Circleville, Ohio 43113</p> </div>
<p style="text-align: center;"><b>CRYSTAL LADY</b> 1817 Vinton St.      Omaha, NE 68108 <b>Bill and Joann Hagerty</b> <b>Marcie Hagerty Bergquist</b> 402-699-0422</p> <p>Specializing in Elegant Glass &amp; Collectibles <a href="http://www.crystalladyantiques.com">www.crystalladyantiques.com</a></p>	<div style="border: 2px solid red; padding: 10px; text-align: center;"> <p style="font-size: 1.2em;"><b>Our House Antiques</b></p> <p>Linda and David Adams Las Vegas, Nevada 702-302-8282</p> <p style="font-size: small;">Shows and Mail Order only email: <a href="mailto:David@OurHouseAntiques.com">David@OurHouseAntiques.com</a> <a href="http://www.OurHouseAntiques.com">www.OurHouseAntiques.com</a></p> </div>

National Cambridge Collectors, Inc.  
PO Box 416  
Cambridge OH 43725  
email: editor@cambridgeglass.org  
website: www.cambridgeglass.org



***The National Museum  
of Cambridge Glass***  
National Cambridge Collectors, Inc.

**Holiday Hours  
Friday and Saturday  
Noon to 4:00 p.m.  
November 3 - December 16**

