



Cambridge Crystal Ball

Published by the National Cambridge Collectors, Inc. as a resource which informs, invites and inspires people to encourage the continued preservation of the glass produced by the Cambridge Glass Company of Cambridge, Ohio for future generations.

Issue No. 559

ISSN 2474-5987

June/July 2022

June 23-25, 2022 NCC Convention

Have you made plans to attend the annual NCC Convention this year? This year, we will celebrate the many wonderful colors that Cambridge Glass manufactured. You will find the convention schedule of events and the registration form included in this issue. You still have time to let us know you're coming.

Thursday

Thursday afternoon you should plan on attending an informative presentation by Larry Everett and Dave Rankin on the extensive information available in the digital Cambridge Glass Library.

Thursday evening, we are fortunate to have nationally known authors and dealers, Margaret & Kenn Whitmyer, presenting a program on Cambridge Perfumes and Vanity Items.

Friday

The Glass Show will open on Friday afternoon at 1pm, with a room full of dealers waiting to entice you with beautiful glass of all kinds.

Friday evening, plan to join us for the Cocktail Reception and Dinner. Don't forget to bring your favorite goblet.

After dinner, you will enjoy the ever-popular Bring and Brag presentation by Lynn Welker. Collectors always try to outdo each other to present stunning items from their collections.

Saturday

Saturday morning will feature the Glass Dash. It's always a frenzy trying to be in the right place at the right time to have a treasure set out when you are within grasping distance. And of course, you can still shop at the Glass Show in the afternoon.

A new feature this year will be the Saturday afternoon Tea & Coffee. This will be a wonderful opportunity to sit, relax, visit, and share convention finds.

Saturday evening will feature Larry Everett as he shares some of the new information that has been uncovered during the digital archival efforts and Cambridge Glass Library development.

What's Inside

June 23-25, 2022 NCC Convention	1
President's Message	3
Every Day Is An Unexpected Adventure	4
2022 Convention Schedule	7
2022 Registration Form	8
2022 NCC Glass Show	9
Zoom & Tell: Helio and Violet	10
eBay Report	12
Wordsearch Puzzle	14
Volunteer Opportunity.....	17
New York Study Group: Interested?	17
New Members.....	18

National Cambridge Collectors, Inc.

PO Box 416 Cambridge, OH 43725-0416

Board of Directors

	2022	
Julie Buffenbarger	David Rankin	Frank Wollenhaupt
	2023	
Nancy Misel	Lindy Thaxton	Lynn Welker
	2024	
Cindy Arent	Larry Everett	Mike Strebler
	2025	
Ken Filippini	Freeman Moore	Christine Smith

Officers

President	Freeman Moore
Vice-President	Ken Filippini
Secretary	Nancy Misel
Treasurer	Mike Strebler
Sergeant-at-Arms	Larry Everett

Committees

Endowment	Doug Ingraham
Finance	Mike Strebler
Property	Larry Everett
Strategic Planning	Mike Strebler

Member Services

Vice President

Member Relations
Convention
Member Social Media
Glass Dash
Glass Show
Study Groups
Webmaster

Freeman Moore
Freeman Moore, Membership Database
Larry & Susan Everett
David Ray
Larry Everett & Frank Wollenhaupt
David Ray, Mike Strebler, Jack Thompson
Jeannie Moore, Study Group Coordinator
David Adams

Development

Vice President

Campaigns

Events

Projects
Publicity

Julie Buffenbarger
Ken & Jane Filippini, Annual Fund Directors
Larry Everett, Director of the Heritage Society
Bev & Will Acord,
Lynn Welker, Auction Managers
Susan Everett & Frank Wollenhaupt, Jewelry
Convention: Jonathan Fuhrman

Education

Vice President

Crystal Ball
Digital Archivist
Programs
Publications
Media Productions
Research

Jack Thompson
Freeman Moore, Editor
Dave Rankin
(open)
Larry Everett, Director of Publications
Dave Rankin, Director of Media Productions
Dave Rankin, Director

Museum

Vice President

Public Operations
Facilities & Grounds

Inventory Management
Collections
Museum Gift Shop

Archivist
Museum Social Media
Community Relations

Cindy Arent
Lindy Thaxton, Director of Public Operations
Cindy Arent,
Joe Miller,
Lindy Thaxton
Lindy Thaxton, Director of Inventory Management
Lynn Welker, Director of Collections
Cindy Arent, Gift Shop Manager
Lynn Welker, Gift Shop Manager
Mark Nye, Director of Archives
Cindy Arent, Director
Cindy Arent

Administration

Vice President

Accounting & Finance

Larry Everett
Lisa Neilson, Office Manager

MEMBERSHIP QUESTIONS?

Please send address changes to:
Membership - NCC
PO Box 416
Cambridge, OH 43725-0416
or by e-mail to:
membership@cambridgeglass.org



CONTACT US

NCC Business Manager
Phone: 740 432-4245

businessmanager@cambridgeglass.org



Freeman Moore, President

e-mail: president@cambridgeglass.org

Nancy Misel, Secretary

e-mail: secretary@cambridgeglass.org

Heritage Society

Ensuring the preservation mission of the NCC through planned giving and estate bequests.

Members of The Heritage Society are those who have included the NCC in their wills or estate plans, thus providing the organization with a secure future.

The mission of The Heritage Society is to foster smart estate planning and to assure that NCC is not forgotten as an important beneficiary. Any pledge is meaningful and appreciated.

All Cambridge collectors - both current and future - will benefit from, and be grateful for your support.

Let us know how we can help with your future plans.

Museum:

National Museum of Cambridge Glass



Like us on Facebook

Member: Cambridge Glass/National Cambridge Collectors

NCC Website: www.CambridgeGlass.org

NCC Museum Website: www.cambridgeglassmuseum.org

Miami Valley Study Group Website: www.mvsg.org



PRESIDENT'S MESSAGE

It's June!

During the months of June and July, thousands of glass collectors will arrive in Ohio, West Virginia, and Pennsylvania to celebrate the history and production of their favorite glass manufacturer including Morgantown, Paden City, Imperial, Fostoria, Heisey, Tiffin, Cambridge, Westmoreland, Duncan, and Fenton. It will be a busy summer for glass shows, unlike the previous two years.

I hope everyone reading this article plans to attend the 2022 annual convention of the National Cambridge Collectors from June 23-25. I realize that some of you are not able to attend due to health and travel issues. Susan and Larry Everett are convention co-chairs for this year's convention "Color my World". You'll find the schedule of events and the registration form in this issue. If you are not able to join us in person, there will be photos in the next Crystal Ball and perhaps I can enlist a first-timer to write about their experience. You can also view recordings of the educational programs on the website.

The mailing of the Annual Fund materials occurred in early April. If you didn't receive yours delivered by the post office, let me know and we'll get a reprint sent out. Ballots for the board of directors election need to be returned by June 18 to be included in the counting. Thank-you for your support.

You might have noticed a quarter page announcement in this and the previous Crystal Ball about Volunteer Opportunities. We tried to compile a list of all ways you could help out, but it seems too diverse to summarize into a simple list. So, we're going to highlight an opportunity every month. I would encourage you to reach out to us if you want to help; either in a way that is listed or some other ideas that you might have. We have members who have been doing the same job for years and could use some relief. If you're not sure how you can help, drop me an email and I'll connect you with the appropriate contact.

2022 Annual Membership Meeting
Friday June 24, 6:45 p.m. Eastern time
Pritchard Laughlin Civic Center and Zoom
Zoom Meeting ID: 840 9053 3337
Passcode: 226791

Agenda:

- Secretary's report
- Treasurer's report

Committee Reports:

- Endowment
- Finance
- Property
- Strategic Planning

Operational Vice-Presidents reports:

1. Administration – Larry Everett
2. Development – Julie Buffenbarger
3. Education – Jack Thompson
4. Member Services – Freeman Moore
5. Museum – Cindy Arent

Old Business

- Election results

New Business

- Proposed Constitution change
(published in May 2022 Crystal Ball)

Adjourn

What's coming?

June will be here soon! Will we see you in Ohio?

What's on your Cambridge "wish list" for this year and beyond, and how can we help?

Stay energized and share the word!

Sincerely,

Freeman Moore
president@cambridgeglass.org

Every Day Is An Unexpected Adventure @ The Museum

By Cindy Arent

Whether it's greeting members, guests, processing donations or planning off-site programming; every day at the Museum a new adventure. We are up for the challenge.

For example, NCC member Nancy White had arranged for her family to drop off a donation. They arrived on Sunday afternoon with several boxes and the following day we were unpacking and listing the items donated. Nancy called to see if everything went well and I really enjoyed talking with her. Thank you, Nancy!

During a marketing seminar at the Cambridge/Guernsey County Visitors & Convention Bureau on April 25th, the National Cambridge Collectors received the Grant Assistance Program Award for \$5,000. I submitted the grant request to assist with the advertising and marketing of the Museum and Convention/Glass Show & Sale. We sincerely appreciate the support of the Cambridge/Guernsey County VCB year after year.

Speaking of grants, the projects specified from the grant we received from the Cambridge Kiwanis

Foundation are now complete. The new Smart TV has now been installed in the Museum auditorium. As with most projects, there was a hitch. Our auxiliary equipment was outdated so a new HDMI receiver/amp had to be purchased through funds donated by NCC member Patty Igoe. The new equipment has made a positive impact on the auditorium programming.

Since the last issue, we have also been off site doing programs about Cambridge Glass, the Museum and table etiquette. We were invited by the Zanesville Museum of Art to be part of their Perspective Lecture Series: An Evening with the National Museum of Cambridge Glass. Lindy Thaxton, Sharon Miller and I shared the history of The Cambridge Glass Company and its artisans. The program was very well received and we even renewed our friendship with John Boyd of Boyd's Crystal Art Glass.

On May 12th, we were again asked to do our etiquette program for the Cambridge Area Chamber of Commerce Youth Leadership Group at the Pritchard Laughlin Civic Center. I talked about basic table manners, Sharon Miller demonstrated how to set an informal/formal table and Lindy Thaxton discussed proper dinner conversation. We tried to involve the students as much as possible because active participation is the key to learning and long-term recall. The leadership students had fun learning and will probably never forget how to pass the salt or pepper!

If anyone is attending the Heisey Glass Show in June, be sure to vote for the *Cambridge Glass Dining Table Display* inside their exhibit hall. The title of the display is *Golden Jubilee* since NCC will be celebrating 50 years in 2023 and HCA celebrated their 50th in 2021.

We hope to see you at the National Museum of Cambridge Glass during our June convention or any day you can visit! ■



Robert Ringle and his family arrived at the Museum with a wonderful donation from his mother, NCC member Nancy White.



L-R seated Anna Marie Pavlov, Diana McMahon and Lindy Thaxton (standing) are shown listing pieces from a recent donation.

L-R Cindy Arent, Sharon Miller and Lindy Thaxton are ready to do their presentation at the Zanesville Museum of Art.



A few people attending our presentation at the Zanesville Museum of Art happily volunteered to be the glassworkers.

John Boyd, son of Bernard Boyd of Boyd's Crystal Art Glass is second from the right. We had not seen John since their factory closed and it was so nice to see him again!



The Student Leadership group practiced the “b & d” rule during our etiquette program. Have you ever arrived at a restaurant or wedding reception and the plates, glasses and silverware were placed so closely together that you noticed everyone looking and wondering which plate or glass belonged to them? The easiest rule to remember in a situation like this is the **b & d** rule. If you make fists with your hands, holding your thumbs up with fingers facing toward you, you see a lowercase b and d. This helps you remember that your bread plate is on the left and your drink is on the right.



L-R Stephanie Losego (Cambridge Chamber), Jennifer Vincent (President of the Cambridge Area Chamber of Commerce), Lindy Thaxton, Cindy Arent and Sharon Miller practice etiquette with their Cambridge Glass.



Emma Stratton is our Museum volunteer intern this summer. Emma is a student at Ohio University majoring in art history. She hopes to work at a museum after she graduates. Welcome Emma!



“Color My World”

2022 National Cambridge Collector’s, Inc. Convention Schedule

(Programs subject to change)

WEDNESDAY, JUNE 22

WELCOME TO CAMBRIDGE

Event Location

9:00 – 4:00 pm	National Museum of Cambridge Glass Open	Museum
2:00 – 4:00 pm	Registration	Museum
1:30 - 2:15 pm	Cambridge Glass Documentary Video, Cindy Arent	Museum
	Meals - On your own	

THURSDAY, JUNE 23

9:00 – 11:00 am	Registration	PLCC Galleria
10:00 - 11:00am	Orientation/Meet our New Attendees	PLCC Conference Room
	Things to Do Around Cambridge – Everyone Welcome!	
11:00 - 12:45 am	Lunch – On Your Own	
1:00 - 1:45 pm	Cambridge Glass Documentary Video, Cindy Arent	Museum
2:15 - 3:00 pm	Cambridge Glass Library Users Guide David Rankin and Larry Everett	PLCC Conference Room
5:00 – 6:00 pm	Registration Open	PLCC Galleria
5:00 pm	Cocktail Reception	PLCC Galleria
6:00 pm	Buffet Dinner – BOD Election Results	PLCC Galleria
7:15 - 8:30 pm	Cambridge Perfumes & Vanity Items Margaret & Kenn Whitmyer	PLCC Conference Room

FRIDAY, JUNE 24

8:00 am	Advance Numbers for Show Available	PLCC Galleria
8:00 am	Glass Dash Table Set-up – You are welcome to help	St. Benedict’s Gym
9:30 -10:30 am	Cambridge Colors – Museum Tour	Museum
10:30 am - Noon	Registration Open	PLCC Galleria
12:45 pm	Those with advance numbers may line up	PLCC Galleria
1:00 – 5:00 pm	Glass Show	PLCC Exhibit Hall
3:00 - 4:00 pm	Guided Tour Show Cases	PLCC Galleria
5:00 – 6:00 pm	Registration Open	PLCC Galleria
5:00 pm	Cocktail Reception/President’s Circle Salute	PLCC Galleria
6:00 pm	Buffet Dinner – Bring your favorite Goblet and Vase	PLCC Galleria
6:45 pm	Annual Meeting/Awards Presentations	PLCC Galleria
7:45 - 8:45 pm	Bring & Brag and Glass ID – Lynn Welker	PLCC Conference Room

SATURDAY, JUNE 25

7:00 am	Glass Dash Opens– Early Bird Admission - \$10	St. Benedict’s Gym
8:30 – 11:00 am	Glass Dash Regular Admission - \$5	St. Benedict’s Gym
10:30 – 4:00 pm	Glass Show	PLCC Exhibit Hall
3:00 pm	Tea & Coffee – Visit, Relax & Share Your Convention Finds	PLCC Conference Room
5:30 – 6:30 pm	Casual Buffet	PLCC Galleria
6:30 - 7:30 pm	Cambridge Glass New Discoveries- Larry Everett	PLCC Conference Room

PLCC – Prichard Laughlin Civic Center - 7033 Glenn Hwy, Cambridge, OH
 Museum – National Museum of Cambridge Glass - 136 S 9th St, Cambridge, OH
 St. Benedict’s Gym – 701 Steubenville Ave (parking lot) Cambridge, OH

Registration Form

**Forty Ninth Annual Convention -National Cambridge Collector's, Inc.
June 23 - June 25, 2022**

“Color My World”

Name of Registrant <i>(As you wish it to appear on your Name Badge)</i>	First Convention?		Favorite Color
_____	Yes	No	_____
_____	Yes	No	_____
_____	Yes	No	_____

Address: _____ State _____ Zip _____

Email address _____ Phone Number (_____) _____
(Registration confirmation will be sent via email if the above information is provided)

ACTIVITY	FEE	NUMBER ATTENDING	TOTAL
<i>President's Circle or Show Dealer (limit 2/show booth)</i>		_____	<u>No Charge</u>
Convention Orientation/Meet our new attendees		_____	<u>No Charge</u>
Saturday Tea & Coffee		_____	<u>No Charge</u>
Registration (June 1 deadline)	\$30.00	_____	_____

Thursday Dinner* **\$20.00** _____
Buffet: Maple Bacon Glazed Stuffed Pork Chops, Oriental Chicken Stir-Fry with Vegetables, Rice Pilaf, Scalloped Potatoes, Green Bean Lyonnaise, Family Style Salad, Breadsticks and Butter, Variety of Cakes, Beverages (Sweet Tea, Ice Tea, Coffee, Water)

Friday Dinner, Annual Meeting & Awards* **\$28.00** _____
Buffet: Carved Sirloin of Beef, w/Au Jus & Horseradish Sauce, Chicken Cordon Bleu, Salted Baked Potatoes w/ Butter, Sour Cream & Chives, Buttered Corn w/Dill, Glazed Baby Carrots, Family Style Salad w/House Dressing, Rolls & French Bread w/Butter, Homemade Pies, Beverages (Sweet Tea, Ice Tea, Coffee, Water)

Saturday Dinner* **\$16.00** _____
Buffet: Variety of Mini-sandwiches (Turkey w/Cheese, Ham w/Cheese, Chicken Salad), Chicken Tenders w/BBQ, Ranch and Buffalo, Potato Salad, Vegetables w/Dip, Fresh Fruit, Variety of Cookies, Beverages (Sweet Tea, Ice Tea, Coffee, Water)

TOTAL DUE _____

Please remit total by mail to: NCC Convention Registration, P.O. Box 416, Cambridge, OH 43725-0416
Convention chairs may be contacted electronically at everettnc1@gmail.com

** Meals include seating charges, taxes, and gratuity. Cocktails are available for an additional charge. Please contact us or by note below, if special meals are required due to dietary restrictions.*

Additional comments, special needs (e.g. gluten free, non-meat)

*By registering for this event, I grant permission to allow photographs and/or video recordings of me and or my guest(s) during this event for future use by the NCC. I release NCC and its entities from any liability or obligation that may arise as a result of the use of any and all images.
Registration as of: 3-20-22*

2022 NCC Glass Show

by Mike Strebler

The **2022 NCC Glass Show** has already received commitments for all of its available exhibitor space. Now in its 45th year, the NCC Glass Show is one of the premier gathering places for the entire glass collecting community. Join us June 24-25, 2022 in Cambridge, Ohio. Sponsored by the National Cambridge Collectors (NCC), the 2022 NCC Glass Show is a comprehensive and united event with educational forums and express learning sessions, abundant networking opportunities, and a show floor full of the glass art we love. You will walk away from the 2022 NCC Glass Show with knowledge, information, and great glass to help you enjoy and appreciate this great art. The show will feature eighteen of the finest glass dealers in the country.

The venue for the NCC Glass Show is the Exhibit Hall of the Pritchard Laughlin Civic Center. The Exhibit Hall contains 10,000 sq. ft. of floor space for our exhibitors. The facility is modern with lots of parking. All tables in the showroom will be



draped, with the majority lighted at the discretion of the individual dealers. The show is scheduled for:

Friday, June 24, 2022 1:00 to 5:00
Saturday, June 25, 2020 10:30 to 4:00
Location: Pritchard Laughlin Civic Center
7033 Glenn Highway
Cambridge, OH 43725

The 2022 NCC Glass Show is not only sponsored by NCC but it is also managed by NCC. The experienced team of Jack Thompson, David Ray, and Mike Strebler are the show managers. The team operates as three co-chairs with each chair having expertise and responsibilities in functional areas. While the

teammates all have particular expertise to offer, no single member is responsible for a task without the support and assistance of all the entire team. It's just not fair to give someone a task without any support. Jack Thompson heads our dealer relations, David Ray is the marketing lead, and Mike Strebler is finance and administration.

All the major fundamentals are in place so now the focus is on execution. A very important task for the management team is to put together a volunteer team to make it all happen. Think about volunteering. The show needs volunteers in the areas of set-up day doughnuts and lunch, gate admissions during show hours, and dealer check-in. Our goal is to put together a great

show for everyone to come and enjoy. The most important aspect of this goal is to invite everyone interested in glass and pottery art to come to the NCC Glass Show. We want the NCC Glass Show to be a fun gathering place for those interested in glass and pottery art with the intention of

it carrying long into the future. Think of it as a community table in a local restaurant where everyone is invited to sit down.

We hope the event will provide an opportunity for people to enjoy themselves for the weekend with others who share their passion for glass and pottery art. So that's the front page on the 2022 NCC Glass Show. Good Friends wanting to enjoy their passion for art together. And finally, thank you to all the Friends of Cambridge who have built an organization able to support the world of collecting and appreciating glass and pottery art. ■

Zoom & Tell: Helio and Violet

by David Ray

After a one-month hiatus from our Zoom & Tell programing, between 35-45 Cambridge enthusiasts joined the April program to learn about the two opaque purple colors of glassware produced at the Cambridge Glass Company. These two colors are Helio (1923-1924) and Violet (1956-1957). Les Hansen open the program with a brief history on these two colors that were both produced more than 30 years apart. From the Helmers batch book, Helio received its purple color from Magnesium Oxide and Nickel Oxide. To impart the opaqueness to the glass, Fluorspar was added to the batch. There is no official chemical formula known for Violet, but a formula dated 1956 was found and describes a color very similar to Violet. This chemical formula includes Powder Blue and Didymium Oxide. Although the two colors are quite similar, most collectors feel Violet has a blue cast when compared to Helio.



In the August 2012 Crystal Ball, I wrote an article about Violet. Since that time, only one new Violet item has been found. Having collected Violet for several years, I have managed to acquire nine of the twenty known items produced. The blanks selected for Violet come from the Everglade/Arcadia line, the Jenny Lind line, the Caprice line, the Mount Vernon line, the Sea Shell line and three ash trays from the re-open period. All of these pieces are quite difficult to find.

The next Zoom and Tell program will be held on Tuesday, Jun 14 at 8:00 PM EST. For the summer months, we are changing the Zoom & Tell from Thursday to Tuesday. The program theme for June is Azurite, Windsor Blue and Turquoise. I hope you can join us for future Zoom & Tell programs. They are a wonderful opportunity to spend time with fellow glass enthusiasts learning about our favorite glass manufacturer, Cambridge. Please email (westervillesh@hotmail.com) me with any questions. Happy collecting.

Both colors were produced for a very limited time, but even though Helio was produced nearly 100 years ago, it was produced in a much greater quantity. Many guests of the program shared a variety of Helio examples. During the 1920's, Cambridge was producing much greater quantities of glass compared to the late 1950's. Helio was also produced in a much broader range of blanks compared to Violet and it can be found with a variety of gold and silver decorations.



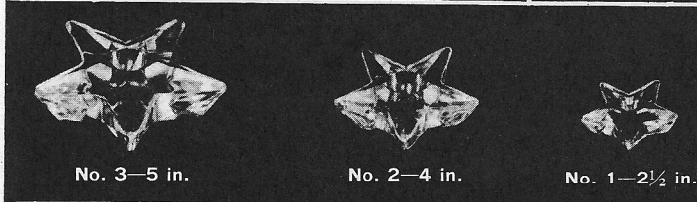
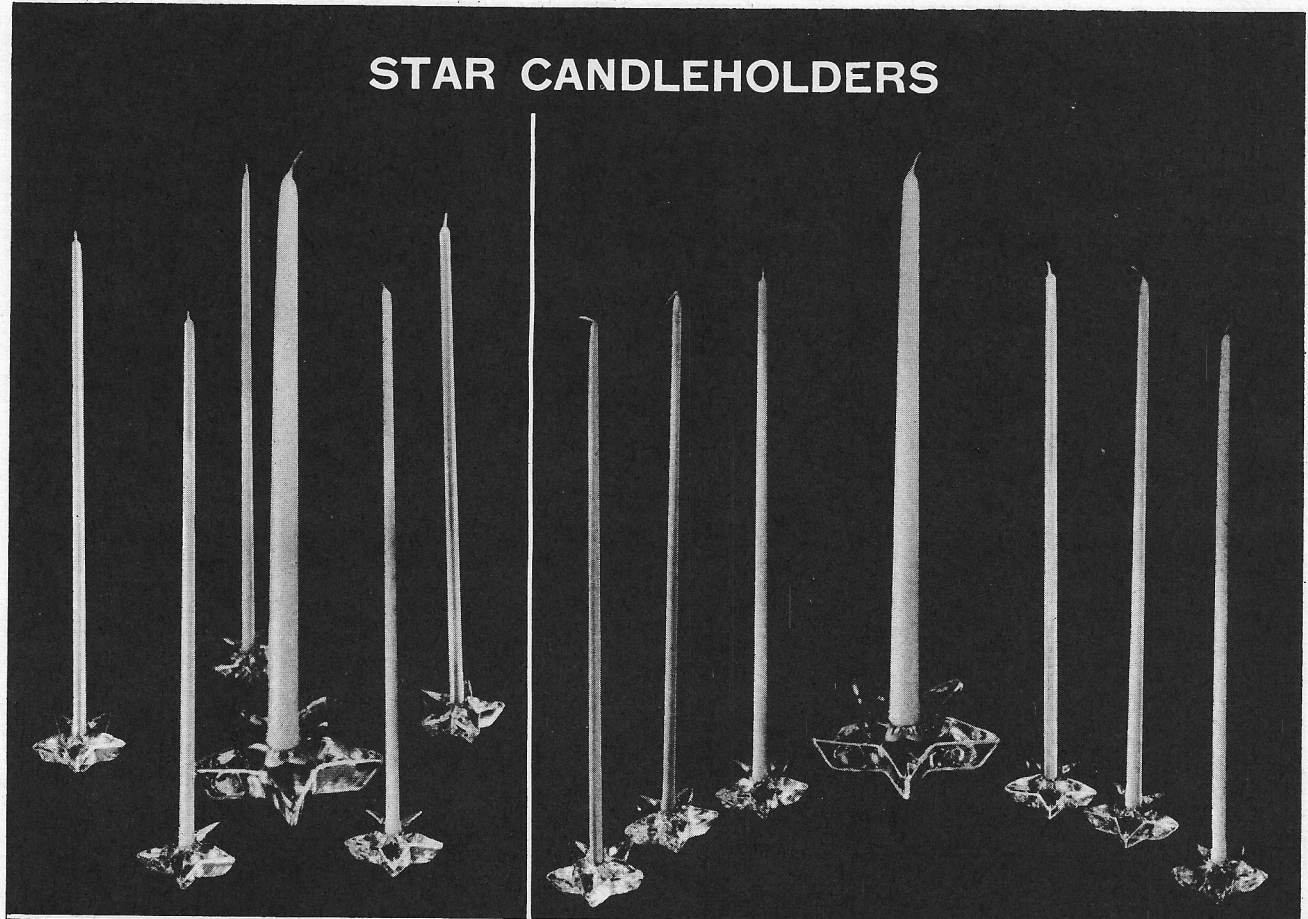


The Cambridge Glass Company



STAR CANDLEHOLDERS

JANUARY 1, 1940



No. 3—5 in.

No. 2—4 in.

No. 1—2½ in.

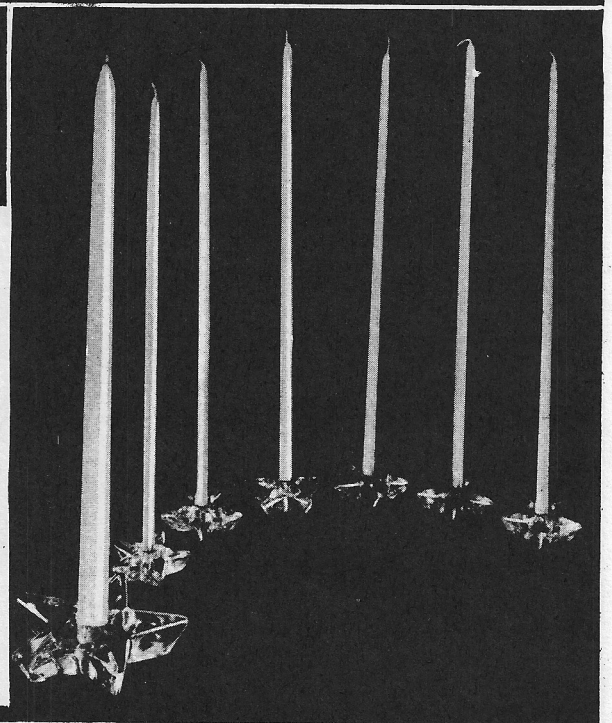
These Candleholders, molded in the shape of a Star, are attractive in any setting and for any occasion.

The Stars are made in Crystal and Moonlight. Almost any color scheme may be arranged by using various colors of Candles.

The large and medium sizes hold the regulation size Candle.

The small size is made to hold the new small diameter taper Candle.

Many interesting and novel arrangements may be made by using all of one size or a combination of the various sizes. One or two of the large or medium size may be made the center of a grouping of the small ones. The larger sizes may be used in the center of the table with rows of the small ones to the corners of the tables or with a small one at each plate. The hostess will delight in planning new arrangements with the Stars and Candles.



Cambridge, Ohio - - - U. S. A.

Welcome to the eBay Report, featuring Cambridge glass items that sold on eBay circa mid-April through mid-May 2022. Selling prices are rounded to the nearest dollar. If no color is mentioned, assume that the piece or part of it being discussed is crystal. If I refer to an auction as "incognito," that means that the seller did not know he or she was offering Cambridge glass, and didn't use the word "Cambridge" in the description. I also try to mention if a listing was a Buy It Now offering, as opposed to an auction style listing. I think it's important to distinguish between the two, as the price for an auctioned item reflects competitive bidding (or no competition, if it sells for the opening bid.)

Here we go:

Rose Point

A scarce #3106 cordial sold for \$88 Buy It Now, while a set of 8 #3106 cocktails brought only four dollars more, ending at \$92.

A #3500/144 Gadroon center handled tray with 4 #498 8 ounce tumblers sold for \$210 Buy It Now. Of course, the tray is not etched.



A #1066 Aurora ivy ball sold for \$395 Buy It Now. A scratch on the foot was noted.



A #3900/116 80 ounce ball jug with gold encrusted etching sold for \$295 Buy It Now.

Statuesque (Nude Stem) and Related Items

A pair of cocktails in late (1950s) Pink sold for \$63. One had a flake on the edge of the foot.

A pair of cocktails in solid crystal with no optic sold for a surprising \$200 Buy It Now.

A lone candleholder with Royal Blue candle socket brought \$484.



A cigarette box with lid in Forest Green sold for \$282.

Gold, Silver and Enamel Decorations

A Peach-blo #3075 decanter with gold encrusted Wheeling Florentine band etch at the shoulder and gold highlighting sold for \$72. Some gold loss was noted.

A #28 10 inch bowl in Azurite on a black glass stand, etched and black enamel encrusted Peacock sold for \$585 in an incognito listing. The seller described it as "Turquoise Blue Peacock Etched Bowl with Art Deco Stand Vintage Fenton? Art Glass." The lucky high bidder on this should rightfully spread his tail and screech loudly in pride.



A #3400/38 80 ounce ball jug in Royal Blue with the Depasse Pearsall silver deposit decoration of swans glided away silently but elegantly for \$950 Buy It Now.

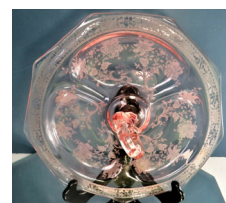


Etched Tableware & Stemware

A set of 4 Amber #3400/81 5 inch square fruit saucers etched Diane offered by a seller in Australia sold for \$45. Several comments here: When, when, when, do collectors of etched colored Cambridge dinnerware get the opportunity to buy berry bowls, cereal bowls, or flat soup bowls in their pattern? Answer: Seldom! (It's not just Cambridge collectors who suffer; it's that way with etched and colored Fostoria glass patterns, too.) Second, the "square with scalloped corners" pieces of #3400 are some of the most attractive shapes Cambridge made. Third, why is it that Cambridge's major etched patterns (think: Diane and Portia) etched on pastel colored tableware (not stemware) like Gold Krystol, Light Emerald Green, Amber, Heatherbloom, and PeachBlo, so darn hard to find? And considering how hard it would be to put together a set of basic tableware in one of those, why do the pieces that DO turn up seem to sell for very reasonable prices, i.e., don't get bid way up? Maybe I've answered my own third question here – perhaps the difficulty itself keeps people from even trying.



A #5000 8 inch footed nappy etched Marjorie sold for \$45 Buy It Now.



A #861 11 inch handled serving tray in PeachBlo, border etched #527, the compartments etched with early Wildflower, sold for \$50 Buy It Now.

A Light Emerald Green #3400/1098 2-part “keyhole” handled relish etched Apple Blossom was offered for \$60, and sold for \$51 when the seller offered a 15% discount.



A #3400/5 4-toed bowl with the rolled rim and a pair of #646 5 inch single candlesticks in Gold Krystol, etched Portia, sold for a mere \$61.



A Gold Krystol Decagon ice bucket with “hammered” style metal handle, etched Cleo, sold for \$89 Buy It Now.

A set of 5 #3125 6-3/4 inch footed tumblers with Gold Krystol bowls etched Deauville sold for \$120 Buy It Now. Even though two tumblers had chips, based on the prices that pieces in this pattern have been commanding, I think the seller left money on the table by not offering them in auction format. For example, ONE tall champagne or sherbet sold during the same period for \$165, and a tumbler the same size as the ones in the batch of 5 brought \$185, both Buy It Now. The photo of the glasses under a black light really makes the etching stand out.



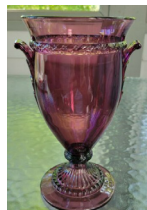
A #3500/67 5-piece relish set on tray, the tray etched Wildflower, the inserts unetched, sold for \$130 Buy It Now.

Miscellaneous



A Seashell footed covered candy in Windsor Blue sold for the opening bid of \$54. Sure, this isn't a rare piece of Windsor Blue, but it seems to me that except for the rarest pieces, items in this color do not bring the prices they used to.

An Amber #278 11 inch vase etched Portia sold for the opening bid of \$85.



A #3500/44 Gadroon 8 inch footed vase in Amethyst sold for \$56. It looked somewhat pale.

A Willow Blue #402 12 inch flared vase with the “Birds and Berries” etching that is so often seen on this shape sold for \$100 Buy It Now. Another in a dark Amber with the gold encrusted #5B Betty band etch at the rim sold for \$140 Buy It Now. Some slight haze and minor gold loss was noted.



An Ebony small decanter set in Farber Brothers chrome, paired with 4 #1341 “mushroom” style cordials sold for \$112. One cordial had a chip. (If you were the buyer, contact me – I have a spare cordial you can have, for a small donation to NCC plus the cost of shipping.)

An Everglade 17 inch 3-toed plate in Forest Green sold for \$150 Buy It Now. The seller offered free shipping; THAT must have hurt when he had to actually pay it!

A Near Cut Double Star pitcher in Emerald with carnival glass treatment sold for \$175 Buy It Now.



A large Tally Ho “top hat” vase in Royal Blue sold for \$186 Buy It Now.

A large Bashful Charlotte figural flower arranger in Moonlight Blue sold for \$305 after 31 bids.



A Near-Cut #2780 Inverted Strawberry Amethyst 9-1/2 inch tall tankard with carnival glass treatment sold for the opening bid of \$445.

A Forest Green #746 13 inch vase etched Gloria sold for \$550 Buy It Now.



Comments on Last Month's Report

A reader responds, “The plate that you listed IS a #242 that Wallace ordered with the etching in the center. Wallace then added the pierced sterling silver Rose Point rim around the plate – a whole 2” wide making the result a whopping 17.5 inches. Wallace product #4609-9. It is interesting to see what changes Wallace had made to a normal Cambridge production item – usually just more roses. Some Cambridge blanks were probably private Wallace molds, as Cambridge never sold them separately without the silver and additional etching.”

That's it for now. If you see any interesting Cambridge glass on eBay that you think I should be watching or reporting on, or if you have any other input, feel free to contact me at LAGlass@pabell.net. I am well aware that I don't catch every interesting listing, and now that eBay no longer has a category devoted to Cambridge glass, I will especially need your help.

Until next time, happy Cambridge hunting!

Colors of Cambridge

X D P Q H C D M I L K Z Q S N E J V I O L E T H E
 X H L N T X H S D K H S D L D C B R K H C D E D K
 Z Q M U F E P U H E A T H E R B L O O M M M A P Z
 X Z O M E Y O A M E T H Y S T X A I Q V U J X E U
 I G N W H W M N A Q I R Q U Y C A R A R R A D A P
 G T L L T P O Y D K J V P F B L U E B E L L G C R
 C E I K C G N P E V F X O S E R S X V B A S N H O
 A R W J K O A P I W Z O S R I N E X E R V L U B Y
 B E M A J L G Q R W Y Z R E Y G X S E V P A T L A
 B W M H Z D R K A X Z O R E O C O M W G T R K O L
 S X I V I K E A M B E R K S S R E O C V G O C J B
 F W V N W R E R Z L W Q D T M T F K U O E S R H L
 T K G M D Y N W A Z D L C I H P G E X Y P A O Y U
 U C V W C S H P D Z O F R G R Y E R D S H B W Y E
 R J K J R T O P W G F P I Z F I I K E Y Z A N N A
 Q Q T Z U O E R N T N L J U G L H M S E U O T I T
 U C Y Q Z L X I B T W R V X T Y O P D G N E U C K
 O I C D E W R W I L L O W B L U E Q R D B B S A J
 I O X E F A S O A Z U R I T E B V P T N P O C R V
 S M Y X D A T W C T H E L I O Y A P J G L N A M G
 E B O N P I S T A C H I O K G U C V E X I Y N E H
 B X A C T O P A Z H M O O N L I G H T G I E J N S
 V M X M H E B K P L A I D M U L B E R R Y Z Y N Q
 P Z T C H A S U N S E T J E Z D N G R U B I N A Z
 W W N A W Z H C P S C B M Z I F P E T C T I V M J

Forward, Diagonal, Up and Down

AMBER	GOLDKRYSTOL	MILK	ROYALBLUE
AMETHYST	HEATHERBLOOM	MOCHA	RUBINA
AZURITE	HELIO	MOONLIGHT	SMOKE
BLUEBELL	IVORY	MULBERRY	SUNSET
CARARRA	JADE	OPAL	TOPAZ
CARMEN	LAROSA	PEACHBLO	TURQUOISE
CROWNTUSCAN	LIGHTEMERALD	PISTACHIO	VIOLET
EBONY	MADARINGOLD	POMONAGREEN	WILLOWBLUE
FORESTGREEN	MADEIRA	PRIMROSE	WINDSORBLUE

Recruit
and
Retain

Give this page to a friend



The National Cambridge Collectors
P.O. Box 416 ~ Cambridge, Ohio 43725

“FRIENDS OF CAMBRIDGE” MEMBERSHIP

The National Cambridge Collectors, Inc. (NCC) is a non-profit organization dedicated to the education and preservation of the great work of the Cambridge Glass Company. Founded in 1973, we depend on the financial support of our members, who we call **Friends of Cambridge**, for the majority of our operating budget. Won't you consider becoming a Friend of Cambridge? You can also complete this online at: <http://cambridgeglass.org/online/>

Friend #1 _____

Friend #2 _____

Friend #3 _____

(continue on reverse if needed - indicate any children and their year of birth, only those 18 and older residing in your household may vote)

Address _____

City/State/Zip _____

Email Address (required) _____

Phone Number _____

Crystal Ball newsletter delivery: ___ email (color) ___ paper (black & white)

Glass collecting interest: _____

New Member? (Y/N) ___ or Renewal? ___ If renewal, Member #s _____

Levels of Membership

Patron \$ 35

Century Level	\$ 100	Mardi Gras Level	\$ 200
Japonica Level	\$ 500	President's Circle	\$ 1,000

All members receive the Crystal Ball, free Museum admission and 10% off any book/DVD purchases, President's Circle includes Convention registration for two members in the household and one free copy of any new NCC publication.

All memberships are renewed annually via The Annual Fund mailing in late March/early April. All Annual Fund gift recognition levels are per household and include membership for everyone within the household 18 and older. Each household will receive a subscription to the Crystal Ball newsletter, unlimited admissions to the museum, and rights to vote in elections for the Board of Directors and discounts on NCC books. NCC is a 501(c)(3) organization and Annual Fund gifts are allowed as a tax deduction under Section 170 of the Internal Revenue Code. Contact your tax advisor for your individual situation.

Return this form with check or money order payable to NCC, Inc. at the above address.
And always visit us at www.cambridgeglass.org to see what's new!

For Sale - NCC Publications

Published by NCC • Members receive a 10% discount

TITLE		REGULAR PRICE	MEMBER PRICE
1903 Cambridge Glass Catalog reprint	106 page reprint, paperback.	\$5.56	\$5.00
1910 NearCut Catalog Reprint	108 pages, paperback, no price guide	\$14.95	\$13.45
1927-29 Catalog Reprint	66 pages, paperback, no price guide, includes identification guide	\$9.95	\$8.95
1930-34 Catalog Reprint	250 pages, paperback with 2000 price guide	\$14.95	\$13.45
1930-34 Catalog Index	Index for above	\$2.00	\$1.80
1940s Cambridge Glass Catalog reprint	613 page reprint, 3 hole punched	\$19.95	\$17.95
1949-53 Catalog Reprint	300 pages, paperback, no price guide	\$19.95	\$17.95
Cambridge Rose Point – A Collector’s Guide 2018	color, spiral bound	\$29.95	\$27.00
Cambridge Rose Point – 2nd Edition 2007	146 pages, paperback, no price guide	\$19.95	\$17.95
Caprice	200 pages, paperback, no price guide	\$19.95	\$17.95
Decorates	136 pages, paperback, no price guide	\$14.95	\$13.45
Etchings 2nd Edition 2006	102 pages, paperback, no price guide	\$17.95	\$16.15
Etchings: Blossomtime	26 pages, paperback, no price guide	\$7.95	\$7.15
Etchings: Candlelight	30 pages, paperback, no price guide	\$7.95	\$7.15
Etchings: Chantilly	44 pages, paperback, no price guide	\$7.95	\$7.15
Etchings: Diane	53 pages, paperback, no price guide	\$7.95	\$7.15
Etchings: Elaine	64 pages, paperback, no price guide	\$7.95	\$7.15
Etchings: Portia	57 pages, paperback, no price guide	\$7.95	\$7.15
Etchings: Wildflower	42 pages, paperback, no price guide	\$7.95	\$7.15
Rock Crystal Engravings	119 pages, paperback, no price guide	\$17.95	\$16.15
Rock Crystal Engravings (Listings)	Companion to above; lists all pieces in all patterns	\$9.95	\$8.95
Other:			
Cambridge Ohio Glass in Color	by Mary, Lyle and Lynn Welker 30 pages, color	\$6.61	\$5.95
Reflections	by Degenhart Paperweight & Glass Museum 45 pp	\$5.56	\$5.00

How to Order by Mail or from the NCC Website

Send orders to:
NCC • PO Box 416 • Cambridge, OH 43725

OHIO RESIDENTS PLEASE ADD 7.25% SALES TAX

SHIPPING:
\$8.00 FOR THE FIRST PUBLICATION
\$2.00 FOR EACH ADDITIONAL ITEM

Please include your name, complete mailing address and your phone number or e-mail address.

Payments by check or Money Order only, payable to NCC

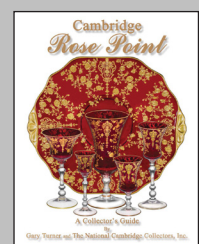
Books may also be purchased on the NCC website,
www.cambridgeglass.org.

available on
amazonkindle

The following books can be purchased on Amazon and downloaded to your Kindle device



Cambridge Glass Colors



Cambridge Rose Point

Volunteer Opportunity

We currently have a volunteer opportunity for the vacant position of Director of Programming.

Responsibilities include planning the program for the 2022 fall quarterly meeting, and programs for the 2023 annual convention. Don't be concerned if you haven't done this before; we can coach you through the process and make it easy for you to do remotely.

If interested, please contact Jack Thompson, V. P. of Education, for more information.

Jack1746@roadrunner.com

New York Study Group Interested??

NCC has had twenty study groups over the years. They have allowed members from different parts of the country to meet, discuss, learn, and share knowledge about the Cambridge Glass Company. There used to be study groups in California, Florida, Michigan, Illinois, Texas in addition to several in Ohio.

Now, with online capabilities using Zoom, we can have virtual study groups in addition to in-person meetings. The Miami Valley Study Group meets monthly using Zoom, whereas the North Texas Study Group meets in-person.

Are there interested collectors in the New York area that would like to create an online study group?

With some setup help, we could meet on Zoom to discuss common collecting interests, either patterns or colors. If so, contact Barbara Ritchin by calling or texting 917-837-6520 or by email at bsrphd@me.com

21st ANNUAL ELEGANT AND DEPRESSION GLASS SHOW AND SALE JULY 16 - 17, 2022

THE FAIRGROUNDS NASHVILLE
EXPO-2 BUILDING
625 SMITH AVE.

<GPS ADDRESS: 500 Wedgewood Ave.>
NASHVILLE, TN 37203

SATURDAY HOURS - 10 AM TO 5 PM
with Guest Speaker at 1 PM

SUNDAY HOURS - 11 AM TO 3 PM

\$6.00 ADMISSION – GOOD FOR BOTH DAYS
< \$5.00/day FAIRGROUNDS PARKING >

FEATURING
VINTAGE ELEGANT & DEPRESSION GLASS
DEALERS FROM ACROSS THE COUNTRY

HOSTED BY FOSTORIA GLASS SOCIETY OF TENNESSEE

SHOW INFORMATION: (615) 856-4259

Email: fostoria_tn@bellsouth.net

www.fostoria-tennessee.com

 www.facebook.com/fostoriaglass.tn

National Depression Glass Association, Inc.
46th Annual Convention
Vintage, Decorative & Collectible
Glass Show & Sale

Saturday July 9, 2022
Sunday July 10, 2022

Wellington High School
1700 E 16th St
Wellington, Kansas 67152

Nationally Known Dealers
Live Auction
Silent Auction
Educational Seminars
Private Collections on Display
Hourly Door Prize Drawings

Admission: \$8
(Good Both Days)

Welcome Back
to the
Heartland

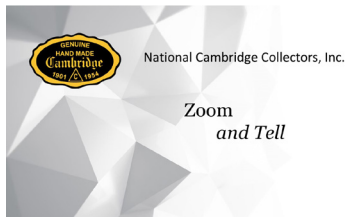
NDGA National Glass Museum
Home of the National Glass Collection
Celebrating our 10th Anniversary
107 N Washington Ave
Wellington, Kansas 67152

Reciprocal ad

NCC Events

**2022 NCC Convention
June 23-25, 2022**

**Fall Membership Meeting
Friday October 8, 2022**



Contact membership@cambridgeglass.org if you don't get the monthly email with the Zoom information.

June 14	Azurite, Windsor Blue & Turquoise
July 19	Ivory & Primrose
August 16	Pomona Green & Jade

Member Benefit

Each NCC household is allowed one free 20-word classified ad in the Crystal Ball per calendar year as part of their membership. This can be a "For Sale" or "Wanted" type of classified ad. Submit your ad by email to editor@cambridgeglass.org

CLASSIFIEDS

Cambridge glass and Krome Kraft For Sale

Selling collection of Krome Kraft with Cambridge inserts, and Cambridge Glass pieces. Would like to dissolve collection of +/-300 pieces. Salt & Peppers, Cream & Sugars, Compotes, Lazy Susan, Pitchers, Decanters, trays, misc serving pieces, most colors. Please pick up while traveling this spring/summer. In Illinois. Contact Sue: sd.camp@frontier.com

June 4-5, 2022

Old Morgantown Glass Show & Sale
33rd Annual Convention
Westover VFW Hall / 340 Holland Ave.
Westover, WV
leasure@earthlink.net

June 10-12, 2022

Fostoria Glass Society of America
41st Glass Show & Sale
Moundsville Center Building / 901 Eight St.,
Moundsville, WV. 26041
<http://www.fostoriaglass.org>

June 15-18, 2022

2022 National Heisey Convention and Glass Show
Reese Ice Arena / 935 Sharon Valley Rd
Newark, OH 43055
<http://www.heiseymuseum.org>

June 18-19, 2022

Tiffin Glass Collectors Club
35th Annual Artistry In American Glass Show and Sale
Tiffin Middle School / 103 Shepherd Dr
Tiffin, OH
<http://tiffinglass.org>

July 9-10, 2022

NDGA 46th Annual Convention Show and Sale
Wellington High School / 1700 E 16th St
Wellington, KS 67152
<http://www.ndga.net>

July 16-17, 2022

Fostoria Glass Society of Tennessee
22nd Annual Show & Sale / The Fairgrounds, Nashville
500 Wedgewood Ave
Nashville, TN
<http://www.fostoria-tennessee.com>

July 23-24, 2022

Peach State Depression Glass Club's 2022
45th Vintage and Collectible Glass Show & Sale
Cobb County Civic Center / 548 South Marietta Pkwy
Marietta, GA 30060
<http://www.PSDGC.com>



New Members

Krista Glisson

IL

DEALER DIRECTORY

Dealer Directory - \$24 for 12-months, size limited by box (see below). Includes listing on NCC website. Electronic submissions should be emailed to: editor@cambridgeglass.org

Advertising Rates:

1/8 page \$15 1/4 page \$20
 1/2 page \$30 Full page \$50

Mailed submissions and all payments should go to PO Box 416, Cambridge, OH 43725. Deadline is 10th of preceding month. Ads must be paid in advance. Show listings are FREE; send info to PO Box or e-mail address 60 days before event.

<p style="text-align: center;">Max Miller Elegant American Glassware www.maxmillerantiques.com</p> <p>The Market Place 10910 Katy Freeway. 713-410-4780 Houston TX 77043 mmxglass@aol.com</p>	<p style="text-align: center;">ISAACS ANTIQUES (740) 826-4015</p> <p style="text-align: center;">↔ <i>located in</i> ↔ DealBusters Marketplace 61 S. 2nd Street Byesville, OH (740) 605-1010</p>
<p style="text-align: center;">Glen & Carolyn Robinson White Rose Antiques Specializing in Depression Era Glassware</p> <p style="text-align: center;">2454 McFarland Road York, SC 29745</p> <p>803-684-5685 gandcrobinson@aol.com whiteroseglassware.com</p>	<p style="text-align: center;">MARGARET LANE ANTIQUES</p> <p>2 E. Main St. New Concord, OH 43762 Lynn Welker (740) 705-1099</p> <p>Cambridge Glass Matching Service Hours: Mon-Fri 10-12 AM, 1-5 PM or by appointment</p>
<p style="text-align: center;">CRYSTALLINE COLORS <i>Cambridge • Fostoria • Elegant Glass</i> Booth and Showcases in the Medina Antique Mall Medina, OH (I-71, exit 218)</p> <p style="text-align: center;">Lynne R. Franks 216-661-7382</p>	<div style="border: 1px solid black; padding: 5px;"> <p style="text-align: center;">Connecting Buyers & Sellers!</p> <p style="text-align: center;">Tell us what you are looking for and we help find it.</p> <p style="text-align: center;">CAMBRIDGE GLASS.US</p> <p style="text-align: center;">P. Snyder 740-601-6018</p> <p style="text-align: center;">E-Mail and Find Your Glass!</p> <p style="text-align: center;">psnyder@cambridgeglass.us www.cambridgeglass.us</p> <p style="text-align: center;"><small>When you are searching for Cambridge glass, email your request and it is emailed to all members and dealers. P. Snyder, 1500 Edgewood Dr., Circleville, Ohio 43113</small></p> </div>
<p style="text-align: center;">CRYSTAL LADY 1817 Vinton St. Omaha, NE 68108 Bill, Joann and Marcie Hagerty 402-699-0422</p> <p>Specializing in Elegant Glass & Collectibles www.crystalladyantiques.com</p>	<div style="border: 2px solid red; padding: 10px; text-align: center;"> <p style="font-size: 1.2em;">Our House Antiques</p> <p>Linda and David Adams Las Vegas, Nevada 702-302-8282</p> <p><i>Shows and Mail Order only</i></p> <p><small>email: David@OurHouseAntiques.com www.OurHouseAntiques.com</small></p> </div>



National Cambridge Collectors, Inc.
PO Box 416
Cambridge OH 43725
email: editor@cambridgeglass.org
website: www.cambridgeglass.org



Friends of Cambridge – Annual Fund

NCC exists through member giving using an Annual Fund system to raise operating funds and to ensure the preservation of Cambridge glass for future enthusiasts. The Annual Fund uses a common member "renewal" date and NCC sends out Annual Fund materials to everyone once a year. There are no monthly reminders or monthly renewal dates. The Annual Fund is NCC's primary means of support and all Annual Fund gift recognition levels are per household and include membership for all adults within the household. Additionally, each household will receive a subscription to the Crystal Ball newsletter, unlimited admissions to the museum, and rights to vote in elections for the Board of Directors. Multiple households at the same address are welcomed. NCC is a 501(c)(3) organization and Annual Fund gifts are allowed as a tax deduction under Section 170 of the Internal Revenue Code.

Levels of Membership

Patron	\$35
Benefactor - Century	\$100
Benefactor - Mardi Gras	\$200
Benefactor - Japonica	\$500
President's Circle	\$1,000

President's Circle includes Convention registration for two members in the household and one copy of any new NCC publications.

The National Museum of Cambridge Glass

Located at 136 S. 9th Street
in downtown Cambridge
Wed-Sat 9-4
Sunday 12-4

