



# Cambridge Crystal Ball

Published by the National Cambridge Collectors, Inc. as a resource which informs, invites and inspires people to encourage the continued preservation of the glass produced by the Cambridge Glass Company of Cambridge, Ohio for future generations.

Issue No. 558

ISSN 2474-5987

May 2022

## UNITED STATES PATENT OFFICE.

ARTHUR J. BENNETT, OF CAMBRIDGE, OHIO.

DESIGN FOR A JUG OR SIMILAR ARTICLE.

Application filed January 29, 1925. Serial No. 12,179. Term of patent 14 years.

To all whom it may concern:

Be it known that I, ARTHUR J. BENNETT, a citizen of the United States, residing at Cambridge, in the county of Guernsey and State of Ohio, have invented a new, original, and ornamental Design for Jug or Similar Article, of which the following is a specification, reference being had to the accompanying drawings, forming part thereof.

Figure 1 is a side elevation showing my new design of jug or similar article, and Figure 2 is a top plan view.

I claim:

The ornamental design for a jug or similar article, as shown.

ARTHUR J. BENNETT.

March 24, 1925.

A. J. BENNETT  
JUG OR SIMILAR ARTICLE  
Filed Jan. 29, 1925

Des. 66,824

Fig. 1.

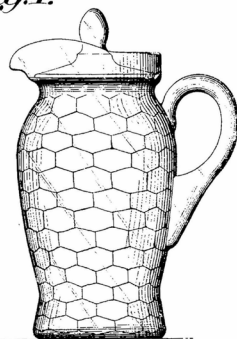
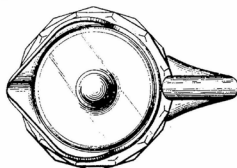


Fig. 2.



Inventor  
Arthur J. Bennett  
By [Signature] Attorney

### What's Inside

Design Patent #66824 .....	1
President's Message .....	3
Museum 2022 Opening Went Very Smoothly ...	4
2022 Convention Schedule .....	7
2022 Convention Registration Form.....	8
March 18, 2022 Membership Meeting Minutes..	9
Constitution Proposed Change.....	10
Volunteer Opportunity.....	11
Cambridge Curiosities .....	12
Legal Mystery???	13
eBay Report .....	14
New Members.....	18

# National Cambridge Collectors, Inc.

PO Box 416 Cambridge, OH 43725-0416

## Board of Directors

	2022	
Julie Buffenbarger	David Rankin	Frank Wollenhaupt
	2023	
Nancy Misel	Lindy Thaxton	Lynn Welker
	2024	
Cindy Arent	Larry Everett	Mike Strebler
	2025	
Ken Filippini	Freeman Moore	Christine Smith

## Officers

President	Freeman Moore
Vice-President	Ken Filippini
Secretary	Nancy Misel
Treasurer	Mike Strebler
Sergeant-at-Arms	Larry Everett

## Committees

Endowment	Doug Ingraham
Finance	Mike Strebler
Property	Larry Everett
Strategic Planning	Mike Strebler

## Member Services

### Vice President

Member Relations  
Convention  
Member Social Media  
Glass Dash  
Glass Show  
Study Groups  
Webmaster

Freeman Moore  
Freeman Moore, Membership Database  
Larry & Susan Everett  
David Ray  
Larry Everett & Frank Wollenhaupt  
David Ray, Mike Strebler, Jack Thompson  
Jeannie Moore, Study Group Coordinator  
David Adams

## Development

### Vice President

Campaigns  
  
Events  
  
Projects  
Publicity

Julie Buffenbarger  
Ken & Jane Filippini, Annual Fund Directors  
Larry Everett, Director of the Heritage Society  
Bev & Will Acord,  
Lynn Welker, Auction Managers  
Susan Everett & Frank Wollenhaupt, Jewelry  
Convention: Jonathan Fuhrman

## Education

### Vice President

Crystal Ball  
Digital Archivist  
Programs  
Publications  
Media Productions  
Research

Jack Thompson  
Freeman Moore, Editor  
Dave Rankin  
(open)  
Larry Everett, Director of Publications  
Dave Rankin, Director of Media Productions  
Dave Rankin, Director

## Museum

### Vice President

Public Operations  
Facilities & Grounds  
  
Inventory Management  
Collections  
Museum Gift Shop  
  
Archivist  
Museum Social Media  
Community Relations

Cindy Arent  
Lindy Thaxton, Director of Public Operations  
Cindy Arent,  
Joe Miller,  
Lindy Thaxton  
Lindy Thaxton, Director of Inventory Management  
Lynn Welker, Director of Collections  
Cindy Arent, Gift Shop Manager  
Lynn Welker, Gift Shop Manager  
Mark Nye, Director of Archives  
Cindy Arent, Director  
Cindy Arent

## Administration

### Vice President

Accounting & Finance

Larry Everett  
Lisa Neilson, Office Manager

## MEMBERSHIP QUESTIONS?

Please send address changes to:  
Membership - NCC  
PO Box 416  
Cambridge, OH 43725-0416  
or by e-mail to:  
[membership@cambridgeglass.org](mailto:membership@cambridgeglass.org)



## CONTACT US

NCC Business Manager  
Phone: 740 432-4245

[businessmanager@cambridgeglass.org](mailto:businessmanager@cambridgeglass.org)



Freeman Moore, President

e-mail: [president@cambridgeglass.org](mailto:president@cambridgeglass.org)

Nancy Misel, Secretary

e-mail: [secretary@cambridgeglass.org](mailto:secretary@cambridgeglass.org)

## Heritage Society

*Ensuring the preservation mission of the NCC through planned giving and estate bequests.*

Members of The Heritage Society are those who have included the NCC in their wills or estate plans, thus providing the organization with a secure future.

The mission of The Heritage Society is to foster smart estate planning and to assure that NCC is not forgotten as an important beneficiary. Any pledge is meaningful and appreciated.

All Cambridge collectors - both current and future - will benefit from, and be grateful for your support.

Let us know how we can help with your future plans.

### Museum:

National Museum of Cambridge Glass



Like us on Facebook

Member: Cambridge Glass/National Cambridge Collectors

NCC Website: [www.CambridgeGlass.org](http://www.CambridgeGlass.org)

NCC Museum Website: [www.cambridgeglassmuseum.org](http://www.cambridgeglassmuseum.org)

Miami Valley Study Group Website: [www.mvsg.org](http://www.mvsg.org)



# PRESIDENT'S MESSAGE

## *It's May, Then June!*

Yes, we're planning for June convention! Susan and Larry Everett are convention co-chairs for this year's convention "Color my World". You'll find the schedule of events and the registration form in this issue. Make your plans to join us in-person after missing out on events the past two years. Sending in your registration early helps them with planning.

The mailing of the Annual Fund materials occurred in early April. If you didn't receive yours delivered by the post office, let me know and we'll get a reprint sent out. In case you might have forgotten, NCC uses the Annual Fund as your opportunity to renew your commitment to NCC and support of our efforts in education and preservation. We don't send out "membership renewal notices", your participation in the Annual Fund drive serves that purpose. Thank-you for your support.

The Annual Fund mailing also included the ballots for the board of directors election. I encourage you to read the biographies of the four candidates that were included in April issue of the Crystal Ball and submit your ballot when you return the Annual Fund response.

Are you a member of the NCC Heritage Society? The Heritage Society consists of NCC members who plan to include NCC as part of estate planning. If you don't want your glass collection to be sold in a garage sale, make sure your desire is documented in your estate plan.

On a positive note, the glass show and convention calendar for this summer seems quite busy compared to the past two years. It seems like all of our fellow glass collectors will be busy this June and July. Obviously, it's best if you can attend the Cambridge Glass Convention at the end of June, but if your schedule permits, consider attending another glass show and their activities. We can all learn from each other. Plus, it's also an opportunity to network and share information about NCC with others.

You might have noticed a quarter page announcement in this and the previous Crystal Ball about "Volunteer Opportunities". We tried to compile a list of all ways you could help out, but it seems too diverse to summarize into a simple list. So, we're going to highlight an opportunity every month. I would encourage you to reach out to us if you want to help; either in a way that is listed or some other ideas that you might have. We have members who have been doing the same job for years and could use some relief. If you're not sure how you can help, drop me an email and I'll connect you with the appropriate contact.

### *What's coming?*

June will be here soon! Will we see you in Ohio?

The monthly Zoom & Tell sessions have allowed members to show examples of Cambridge glass following a monthly color theme. There was no session in March due to the auction, nor will there be one in June due to Convention. Thank you to Julie Buffenbarger for hosting, and to David Ray for providing the monthly writeups for the Crystal Ball. If you can't attend a session, ask to view the video recording.

What's on your Cambridge "wish list" for this year and beyond, and how can we help?

Stay energized and share the word!

Sincerely,

Freeman Moore  
[president@cambridgeglass.org](mailto:president@cambridgeglass.org)

# Museum 2022 Opening Went Very Smoothly

By Cindy Arent

Just before the Museum opened, we visited area attractions and hotels with current Museum brochures and to let them know that we were opening for the season. The hours/days of operation were added to the Museum listing on Google, Facebook, Yelp and TripAdvisor. There is no way to post seasonal hours on these sites, so they have to be removed at the end of the season and reposted when we open again. During auction weekend when the museum was open, I received an email from Google stating the Museum had been marked as open. How did that happen, who knows! I had to log in and remove it, wait two weeks and then post the correct hours.

The Museum opened for the season on April 1<sup>st</sup> and it wasn't long before our first guests arrived. Everything has gone very smoothly to date. NCC member and docent, Julie Davey will not be working this year. We thank Julie for her 10 years as a docent. We will miss her!



Salt Fork State Park Lodge was another stop on our trip to visit area hotels, stores and attractions. Susan Jividen (R) was glad to receive the current museum cards from Cindy Arent. The Museum has many visitors each season from Salt Fork State Park.

It is very rewarding when guests who have previously toured the Museum return with their friends and family. On April 9<sup>th</sup>, one of those groups arrived. A man was quick to mention that he had visited last December and was excited to bring his family from India to experience the Museum. They were very complimentary and promised to return again. This season we have already had visitors from several states, Russia, India and Japan. Beth Work from the Duncan & Miller Museum also came for her first visit. We will be traveling to their Museum soon.

The grant from the Cambridge Kiwanis Foundation is still in progress. We just acquired a new touch screen laptop computer that will be used for the collection inventory and many other projects. The last step in the grant is a new Smart TV for the Museum auditorium. NCC member Scott Brown (Local Net Plus) has the laptop set up and will install the new TV as soon as it arrives.

Many of our Museum visitors are from Northeast Ohio. This season, our brochures will be distributed to 65 hotels in this area by Ad-Rack. This opportunity is through the marketing grant we received this year from the Cambridge/Guernsey County Visitors & Convention Bureau. This is a marketing tool we have never used and think it will be successful.

Storage at the Museum is always in demand and it seems we are constantly reorganizing to make the best use of available space. Jeff Ross volunteered to do some heavy lifting for us. Large Cambridge Glass Company ledgers were moved from the top shelves in the hallway closet to another area to utilize the space to its full potential.

The City of Cambridge clean-up days will be April 22-23. We plan on taking advantage of this opportunity to clean up the storage building.

As always, we hope to see you at the Museum! You can also visit us on the Museum Facebook page <https://www.facebook.com/CambridgeGlassMuseum> or the website [www.CambridgeGlassMuseum.org](http://www.CambridgeGlassMuseum.org) ■

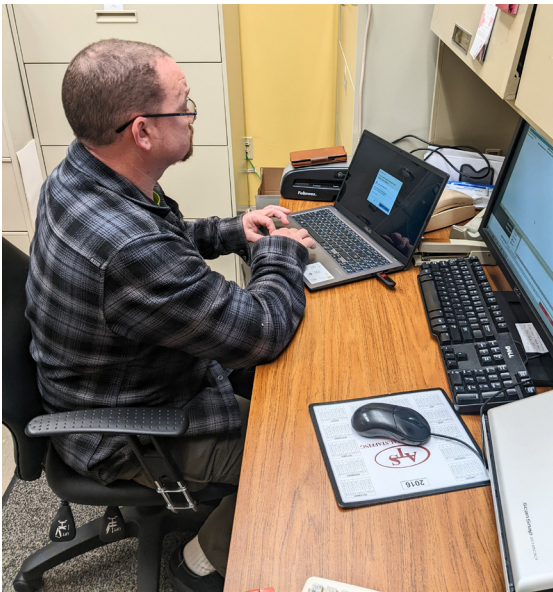
We stopped to drop off museum rack cards at Mosser Glass. Their display area looks beautiful and Mindy Mosser Hartley was happy to take our cards.



We've also made new friends from the Duncan & Miller Museum when they visited our Museum.. Beth Work (R) is a docent at their Museum.

A return Museum visitor had fun making believe he was gathering glass from the mock furnace in the auditorium.





NCC member Scott Brown is shown setting up the new Museum laptop purchased through the grant from the Cambridge Kiwanis Foundation.



Lindy Thaxton is happy to show David Ray the new laptop she uses when working on the Museum's collection inventory.



Jeff Ross volunteered to help with some heavy lifting in what we call the inner sanctum. In tight quarters, Jeff is passing down old ledgers to Lindy Thaxton.



Happiness is..... The National Museum of Cambridge Glass! Look at the expression on the small etching girl's face, true excitement. Their parents posted several photos taken that day at the Museum to our Google listing



# “Color My World”

## 2022 National Cambridge Collector’s, Inc. Convention Schedule

(Programs subject to change)

### WEDNESDAY, JUNE 22

### WELCOME TO CAMBRIDGE

### Event Location

9:00 – 4:00 pm	National Museum of Cambridge Glass Open	Museum
2:00 – 4:00 pm	Registration	Museum
1:30 - 2:15 pm	Cambridge Glass Documentary Video, Cindy Arent	Museum
	Meals - On your own	

### THURSDAY, JUNE 23

9:00 – 11:00 am	Registration	PLCC Galleria
10:00 - 11:00am	Orientation/Meet our New Attendees	PLCC Conference Room
	Things to Do Around Cambridge – Everyone Welcome!	
11:00 - 12:45 am	Lunch – On Your Own	
1:00 - 1:45 pm	Cambridge Glass Documentary Video, Cindy Arent	Museum
2:15 - 3:00 pm	Cambridge Glass Library Users Guide David Rankin and Larry Everett	PLCC Conference Room
5:00 – 6:00 pm	Registration Open	PLCC Galleria
5:00 pm	Cocktail Reception	PLCC Galleria
6:00 pm	Buffet Dinner – BOD Election Results	PLCC Galleria
7:15 - 8:30 pm	Cambridge Perfumes & Vanity Items Margaret & Kenn Whitmyer	PLCC Conference Room

### FRIDAY, JUNE 24

8:00 am	Advance Numbers for Show Available	PLCC Galleria
8:00 am	Glass Dash Table Set-up – You are welcome to help	St. Benedict’s Gym
9:30 -10:30 am	Cambridge Colors – Museum Tour	Museum
10:30 am - Noon	Registration Open	PLCC Galleria
12:45 pm	Those with advance numbers may line up	PLCC Galleria
1:00 – 5:00 pm	Glass Show	PLCC Exhibit Hall
3:00 - 4:00 pm	Guided Tour Show Cases	PLCC Galleria
5:00 – 6:00 pm	Registration Open	PLCC Galleria
5:00 pm	Cocktail Reception/President’s Circle Salute	PLCC Galleria
6:00 pm	Buffet Dinner – Bring your favorite Goblet and Vase	PLCC Galleria
6:45 pm	Annual Meeting/Awards Presentations	PLCC Galleria
7:45 - 8:45 pm	Bring & Brag and Glass ID – Lynn Welker	PLCC Conference Room

### SATURDAY, JUNE 25

7:00 am	Glass Dash Opens– Early Bird Admission - \$10	St. Benedict’s Gym
8:30 – 11:00 am	Glass Dash Regular Admission - \$5	St. Benedict’s Gym
10:30 – 4:00 pm	Glass Show	PLCC Exhibit Hall
3:00 pm	Tea & Coffee – Visit, Relax & Share Your Convention Finds	PLCC Conference Room
5:30 – 6:30 pm	Casual Buffet	PLCC Galleria
6:30 - 7:30 pm	Cambridge Glass New Discoveries- Larry Everett	PLCC Conference Room

PLCC – Prichard Laughlin Civic Center - 7033 Glenn Hwy, Cambridge, OH  
 Museum – National Museum of Cambridge Glass - 136 S 9th St, Cambridge, OH  
 St. Benedict’s Gym – 701 Steubenville Ave (parking lot) Cambridge, OH

# Registration Form

Forty Ninth Annual Convention - National Cambridge Collector's, Inc.  
June 23 - June 25, 2022

## "Color My World"

Name of Registrant (As you wish it to appear on your Name Badge)	First Convention?		Favorite Color
_____	Yes	No	_____
_____	Yes	No	_____
_____	Yes	No	_____

Address: \_\_\_\_\_ State \_\_\_\_\_ Zip \_\_\_\_\_

Email address \_\_\_\_\_ Phone Number (\_\_\_\_\_) \_\_\_\_\_  
(Registration confirmation will be sent via email if the above information is provided)

ACTIVITY	FEE	NUMBER ATTENDING	TOTAL
President's Circle or Show Dealer (limit 2/show booth)		_____	<u>No Charge</u>
Convention Orientation/Meet our new attendees		_____	<u>No Charge</u>
Saturday Tea & Coffee		_____	<u>No Charge</u>
Registration (June 1 deadline)	<b>\$30.00</b>	_____	_____

**Thursday Dinner\*** **\$20.00** \_\_\_\_\_  
Buffet: Maple Bacon Glazed Stuffed Pork Chops, Oriental Chicken Stir-Fry with Vegetables, Rice Pilaf, Scalloped Potatoes, Green Bean Lyonnaise, Family Style Salad, Breadsticks and Butter, Variety of Cakes, Beverages (Sweet Tea, Ice Tea, Coffee, Water)

**Friday Dinner, Annual Meeting & Awards\*** **\$28.00** \_\_\_\_\_  
Buffet: Carved Sirloin of Beef, w/Au Jus & Horseradish Sauce, Chicken Cordon Bleu, Salted Baked Potatoes w/ Butter, Sour Cream & Chives, Buttered Corn w/Dill, Glazed Baby Carrots, Family Style Salad w/House Dressing, Rolls & French Bread w/Butter, Homemade Pies, Beverages (Sweet Tea, Ice Tea, Coffee, Water)

**Saturday Dinner\*** **\$16.00** \_\_\_\_\_  
Buffet: Variety of Mini-sandwiches (Turkey w/Cheese, Ham w/Cheese, Chicken Salad), Chicken Tenders w/BBQ, Ranch and Buffalo, Potato Salad, Vegetables w/Dip, Fresh Fruit, Variety of Cookies, Beverages (Sweet Tea, Ice Tea, Coffee, Water)

**TOTAL DUE** \_\_\_\_\_

Please remit total by mail to: NCC Convention Registration, P.O. Box 416, Cambridge, OH 43725-0416  
Convention chairs may be contacted electronically at everettnc1@gmail.com

\* Meals include seating charges, taxes, and gratuity. Cocktails are available for an additional charge. Please contact us or by note below, if special meals are required due to dietary restrictions.

**Additional comments, special needs (e.g. gluten free, non-meat)**

---

---

By registering for this event, I grant permission to allow photographs and/or video recordings of me and or my guest(s) during this event for future use by the NCC. I release NCC and its entities from any liability or obligation that may arise as a result of the use of any and all images.  
Registration as of: 3-20-22



# National Cambridge Collectors, Inc.

## Minutes of the March 18, 2022 Membership Meeting

President Freeman Moore was not able to attend this meeting, so Vice-President of Administration Larry Everett called the March 2022 Quarterly Meeting of the National Cambridge Collectors, Inc. to order on Friday, March 18, 2022 at 7:30 PM with approximately 30 members present.

The minutes of the November 8, 2021 Quarterly Meeting were published in the February 2022 Crystal Ball. No changes or corrections were requested by the membership. Frank Wollenhaupt moved to accept the minutes as published. Christine Smith seconded the motion. The minutes were approved by unanimous vote of the members present.

### **Treasurer's Report:**

Larry Everett gave the report for Treasurer Mike Strebler. Larry thanked the members for their continuing generosity to the Annual Fund. NCC's current bank balance is \$64,607.85 after moving a significant amount to the Endowment Fund in 2021. The Board has approved the 2022 budget and projects an end of year balance of \$15,200 after another significant transfer to the Endowment Fund. The current Endowment Fund balance is \$859,283.59 with an expected 2022 end of year balance in excess of \$1,000,000. Larry explained that while the market is currently turbulent NCC is invested for the long haul and will stay the course at this time.

### **Reports:**

**Administration** - Larry Everett thanked Lisa Neilson for her hard work as Office Manager.

**Development** - Julie Buffenbarger invited members to join the Zoom and Tell programs. In addition to interacting with other members there is some great glass shown and excellent education provided. She thanked Les Hansen for providing the details on how the colors are manufactured and David Ray for planning the topics. Julie also thanked Bev and Will Accord, Lynn Welker, and Larry Everett and his crew for all of their work to ensure a successful auction tomorrow.

**Member Services** - Julie Buffenbarger reported for Freeman Moore that benefactors were acknowledged in the March Crystal Ball. Without the great membership support, NCC could not accomplish all that it does. She

also reported that membership has declined over the last couple of years dropping from 702 members, 460 households in 2020 to 683/449 in 2021 and to 669/440 in 2022. She stressed the importance of promoting NCC and encouraging new members.

There will be a voting item on the agenda of the June Annual Meeting. The Board of Directors is recommending a proposed change to the Constitution that will increase the size of the Board from 12 to 15 members. If approved, the change would result in the addition of one member each year in 2022, 2023 and 2024. The details of the proposed change will be published in the Crystal Ball prior to the June meeting.

Julie thanked Jane and Ken Filippini for their efforts preparing the 2022 Annual Fund mailing. The envelopes should be in mailboxes by mid April.

Larry Everett announced that the Convention schedule and meals are finalized and that expanded information will be in the next Crystal Ball. He was pleased to report that costs have been kept as lean as possible despite current economic challenges.

**Education** - Jack Thompson thanked Freeman Moore for producing the Crystal Ball. He reminded everyone that Freeman is always looking for submissions for the publication.

Jack thanked Larry Everett and David Rankin for their work on a monumental project to digitize the NCC archives. He stated there have been a tremendous number of both big and small new discoveries. Larry Everett announced that all of the catalogs, including specialty and pharmaceutical, price lists, and circular letters are now available at [cambridgeglasslibrary.com](http://cambridgeglasslibrary.com). Larry requested that anyone with old correspondence, catalogs, etc., contact him if they are willing to have the items scanned for inclusion. Larry thanked everyone who has been involved in this project.

Jack explained that the position of Director of Programming is currently vacant. The major responsibilities of this position are developing the educational programs for the Convention and the October meeting. Anyone interested in working with Jack and taking on this position should contact him.

The list of color charts continues to grow. Nudes, turkeys and swans are completed and on the MVSG.org website. Figural flower frogs are coming soon. Jack is always looking for suggestions for additional charts. In addition to the previously discussed Zoom and Tell meetings, Jack made mention of the monthly Miami Valley Study Group meetings that are very educational and open to anyone. Contact Larry Everett to be added to the study group mailing list.

**Nominating Committee** - Chairman David Ray announced that this year's nominating committee members included Nancy Finley and Elaine Thompson. David presented a slate for 2022 consisting of Julie Buffenbarger, David Rankin, Stu Sandler and Frank Wollenhaupt. There were no nominations from the floor. Scott Adams moved that nominations cease and was seconded by Christine Smith, The motion passed by voice vote of the members present. Jack Thompson made a motion to accept the slate as presented and was seconded by Millie Loucks. This motion also passed by voice vote of the members present. Ballots will be included in the Annual Fund mailing and need to be returned prior to Convention.

David took the opportunity to also encourage participation in the Zoom and Tell meetings. The topic for April will be Helio and Violet, and the topic for May will be Rubina and Sunset. He stated that 40-50 people usually attend the meetings which are held on the third Thursday of the month at 8 PM. Larry Everett added that the Miami Valley Zoom meetings are normally held at 3 PM on the third Sunday of the month.

**Museum** - Cindy Arent reported that the museum is cleaned and ready for 2022. VFW Post 2901 in Cambridge has supplied a new flag for the fourth straight year. A grant from the Kiwanis has been used to upgrade the Wi-Fi and update the children's booklets and tour books. A smart TV and new laptop, provided through the same grant, are arriving soon. The museum also received a \$5000 marketing grant from the Cambridge/Guernsey County Visitors and Convention Bureau. Cindy was pleased to announce that Heisey has requested the museum do a table at the Heisey convention. The fire department has recently inspected the electrical panels, Jeff Ross has checked out the roof, and the museum is set to open on April 1st.

**Old Business:** None

**New Business:**

Christine Smith announced the plan for one of the display cases during Convention. She requested that anyone interested in providing a single line in multiple colors contact her.

David Ray announced that he has show cards available for the Convention. Anyone who wants some to distribute should contact him.

With no additional business to discuss, Frank Wollenhaupt moved to adjourn. This was seconded by Allen Cohen and approved by those present. The meeting adjourned at 8:02 PM.

Respectfully submitted,

Nancy E Misel  
Secretary

**\*\* PROPOSED CHANGES \*\***  
*changes in italics*

**CONSTITUTION:**

**ARTICLE VI – BOARD OF DIRECTORS**

Section 1:

The Board of Directors shall consist of ~~twelve~~ *fifteen* Directors elected by the voting members of the organization. Terms of office are to be as provided in the by-laws.

**BY-LAWS:**

**ARTICLE VI – ELECTION OF DIRECTORS**

Section 4:

The Board of Directors shall consist of ~~12~~ *fifteen* members elected from the roll of active voting members. The term of office shall be for 4 years. *The increase from twelve to fifteen members will occur by adding one member each in June 2022, June 2023 and June 2024.*

**ARTICLE VIII – AMENDMENT OF CONSTITUTION**

This Constitution may be amended by a majority vote of the active members in good standing, present at the annual meeting of the organization, upon proposal by a voting member in good standing sixty days prior to the annual meeting, provided written notice of such proposed amendment shall have been given to the members at least ten days prior to the annual meeting.

## Volunteer Opportunity

We can always use volunteers to help out with activities during convention.

- Larry and Susan Everett can use help with convention registration and making sure everything runs smoothly.
- NCC can also use your help to staff a membership table at the show to greet attendees and promote the benefits of being a Friend of Cambridge.
- NCC can also use your help to staff an information table that we will have at the NDGA show July 9-10.

Let us know of your willingness to assist.  
[membership@cambridgeglass.org](mailto:membership@cambridgeglass.org)

## 21<sup>st</sup> ANNUAL ELEGANT AND DEPRESSION GLASS SHOW AND SALE JULY 16 - 17, 2022

**THE FAIRGROUNDS NASHVILLE**  
 EXPO-2 BUILDING  
 625 SMITH AVE.

<GPS ADDRESS: 500 Wedgewood Ave.>  
 NASHVILLE, TN 37203

**SATURDAY HOURS - 10 AM TO 5 PM**  
 with Guest Speaker at 1 PM

**SUNDAY HOURS - 11 AM TO 3 PM**


**\$6.00 ADMISSION – GOOD FOR BOTH DAYS**  
**< \$5.00/day FAIRGROUNDS PARKING >**

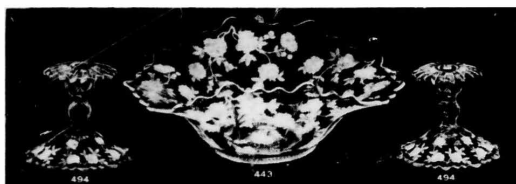
*FEATURING*  
 VINTAGE ELEGANT & DEPRESSION GLASS  
 DEALERS FROM ACROSS THE COUNTRY

HOSTED BY FOSTORIA GLASS SOCIETY OF TENNESSEE  
 SHOW INFORMATION: (615) 856-4259

Email: [fostoria\\_tn@bellsouth.net](mailto:fostoria_tn@bellsouth.net)

[www.fostoria-tennessee.com](http://www.fostoria-tennessee.com)

 [www.facebook.com/fostoriaglass.tn](https://www.facebook.com/fostoriaglass.tn)



*Blossom Time* ... words  
 suggesting EXQUISITE BEAUTY  
 and  
 BLOSSOM TIME  
 GLASSWARE  
 is truly beautiful

An Etched design carefully and skillfully done on the famous Hand-made Cambridge Crystal.

Only a few of the very large selection of available pieces for a complete glassware service are shown here.

**The Cambridge Glass Company**  
 Cambridge, Ohio





# Cambridge Curiosities

By Jack Thompson Chapter 10



Welcome to some of my whimsical observations of the wonderful world of Cambridge glass. Over time, we have come to realize there are so many interesting, strange and/or quirky things about this company and the beautiful products they made. Some may never be explained, but all are just plain fun to think about.

A stemware line from the reopening period is the A-56, aka the Today line. It was produced from around 1955 thru 1958 when the company closed. Examples are not easy to find. It was offered with five different Rock Crystal Engravings: Formal, New Star, Roses, Starlite and Tomorrow.



A56 sherbet RCE Tomorrow



I heard someone could walk into a store yesterday and order a Today cut Tomorrow.

The #3500/64 - 10" 2-Hdl. 3-Compt. 4-Toed Celery & Relish (that's a mouthful!) from the Gadroon line was one of Cambridge's most popular relishes. It can easily be found in a variety of colors, etches and Rock Crystal Engravings. Its sister, the #3500/65 - 10" 2-Hdl. 4-Compt. 4-Toed Relish is not near as easy to find. As was typical for a good portion of the Gadroon Line, etched pieces were also decorated both Gold Encrusted and Gold Stippled. Remember the difference – Gold Encrusted is where the entire etching is filled in with gold. Gold Stippled is a brush-type stroke just around the edge and the etching is not filled in. It is done predominantly on the Gadroon & Martha lines that do not have a straight rim that would lend itself to a nice straight edge line.

An interesting variation happens when either of these relishes are Gold Encrusted with certain etches. With the Elaine etch, only the sides are etched Elaine, and the bottom is etched Chintz #1. It's a beautiful combination. Although neither relish is common, I have never seen a gold encrusted version that was etched Elaine on the bottom, so I assume all were done that way. This same variation also occurs with the Portia and Diane etches. It is possible it occurs with others, but so far these are the only three known.



#3500/64 – Etched Portia, Chintz #1 on bottom, Gold Encrusted



#3500/64 – Etched Diane, Chintz #1 on bottom, Gold Encrusted, Crown Tuscan



#3500/64 – Etched Portia, Chintz #1 on bottom, Gold Encrusted, Crown Tuscan



#3500/64 – Etched Elaine, Chintz #1 on bottom, Gold Encrusted



#3500/65 - Etched Elaine, Chintz #1 on bottom, Gold Encrusted

Don't be fooled into thinking Minerva is an example. Its floral element on the bottom is very similar to Chintz #1, but it is different.



#3500/64, 10" 3-Compt. Celery & Relish, Etched Minerva, Gold Stippled

You would think that the rare #3500 No-Compt. Relish would also have the same combination, but it does not.



#3500/85, 10" 2-Hld. No-Compt. Relish, No Feet, Etched Elaine, Gold Encrusted

Also check out this oddity I found a few years ago. There is no etch on the bottom at all. Wonder how this happened.



#3500/64, 10" 3-Compt. Celery & Relish, Etched Elaine, Gold Encrusted

Sometime after I started thinking about this column, a strange example of the Diane/Chintz #1 combination not part of the #3500 line showed up on Ebay. It's the #3400/200 Relish. This is the first time I had ever seen this combination on a blank other than in #3500 line.

So there may be others – keep a lookout. Please let me know of any examples you have that expands on this information.



#3400/200 – 11" 3-Compt. Celery & Relish, Etched Diane, Chintz #1 on bottom, Gold Encrusted

Until next time, share your enthusiasm and enjoyment of Cambridge glass!

*Jack*

[Jack1746@roadrunner.com](mailto:Jack1746@roadrunner.com)

## Legal Mystery???

by Jack Thompson

When I was doing some research for the new upcoming flower frog color chart, I came across a small blurb in Crockery and Glass Journal's June, 1931 issue (see below). In 1934, Cambridge changed the name of their pink color from Peach-Blo to Dianthus, with no apparent formula change. It has never been clear why this was done. Maybe this is a clue.

**Crockery and Glass Journal**

June 1931 - Page 29

### Peach-Blo Given Protection

"Peach Blo" as the sole property of the Limoges China Co., Sebring, O., is now established fact, according to J. H. Dwenger, Jr., New York representative of the company. Returning Monday from a visit to the factory he declared that the right of Limoges to the sole use of the trade name has been ratified by the U. S. Patent Office as of May 1. The serial number is No. 306,319. Already two firms have been stopped from using the trade name and other infringers will be prosecuted, Mr. Dwenger said.

Do we have any lawyers who might be able to find further details? Was The Cambridge Glass Company identified as one of the infringers?

Contact me at [Jack1746@roadrunner.com](mailto:Jack1746@roadrunner.com)

This eBay Report is provided to keep members up with what's happening on the world's largest Internet Auction site, and focuses on Cambridge glass items that are seldom or rarely seen. Please note we cannot guarantee the accuracy of listings herein.

Welcome to the eBay Report, featuring Cambridge glass items that sold on eBay circa mid-March through mid-April 2022. Selling prices are rounded to the nearest dollar. If no color is mentioned, assume that the piece or part of it being discussed is crystal. If I refer to an auction as "incognito," that means that the seller did not know he or she was offering Cambridge glass, and didn't use the word "Cambridge" in the description. I am also trying to make sure I mention if a listing was a Buy It Now offering, as opposed to an auction style listing. I think it's important to distinguish between the two, as the price for an auctioned item reflects competitive bidding (or no competition, if it sells for the opening bid.)

Here we go:

### Rose Point

A blown lid for one of the blown candy boxes (see page 74 of Cambridge Rose Point – 2<sup>nd</sup> Edition) sold for \$25. This would have fit one of the comport-style candy box bases with a 5 inch diameter opening. Some nicks were noted, but still... grab parts like this when you see them.

A 14 inch round plate sold for \$40. I wonder if this is the #242 plate, without the Wallace silver trim?



A pair of #19 bobeches with 2 notches and 8 repetitions of the medallion sold for \$90 Buy It Now.



A #1603 hurricane lamp (version 2 with the #1606 chimneys) sold for the opening bid of \$100. The dust was free. Really? How hard could it be to wash and dry glass before you photograph it?

A pair of #321 3-1/2 inch 7 ounce flat sham-bottomed old fashioned cocktail tumblers sold for \$110 Buy It Now.



### Statuesque (Nude Stem) and Related Items

A set of 6 brandies with Forest Green bowls sold for \$275 Buy It Now. 4 of the 6 had an original label on the foot; 1 had a chip to the foot.



An ashtray in solid Crown Tuscan tapped out for \$330 Buy It Now.



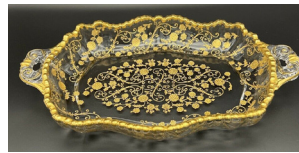
A champagne with Amethyst bowl fizzed away for the opening bid of \$120.

A 9 inch table goblet with Forest Green bowl brought \$141.

A cocktail with Crown Tuscan stem and Carmen bowl sold for \$995 after 33 bids.



### Gold, Silver and Enamel Decorations



A #3500/85 10 inch 2-handled no-compartment relish, no feet, etched and gold encrusted Elaine sold for \$44. I could not find the blank in my Cambridge reference books, so I had to turn to an expert for help. Turns out this shape is rarely found with no compartments (i.e., no dividers), and has never been seen without the short peg feet. By the way, the seller called the shape #3121 and the etching Wildflower. Really people? Buy some glass reference books... join NCC... c'mon in, the water's fine!

One of the things I enjoy buying a LOT is PARTS. One seller offered a #3500 Gadroon lid with fancy finial to fit the urn with a 4 inch opening in Crown Tuscan with gold decoration for \$65. It sold for an undisclosed Best Offer. Smart buyer!



A #3500/57 3-compartment covered candy etched and gold encrusted Wildflower sold for \$85 Buy It Now.

A single #636 9-1/2 inch candlestick in Ebony with gold encrusted Hunt Scene etching sold for \$100 Buy It Now. Some gold loss around the perimeter of the foot was noted.



A pair of #2368 10 inch vases in Ebony with gold decoration of cattails over an iridized background that covered most of the central part of the body of the vases, with gold trim at the top and bottom, sold for \$280 in an incognito listing.

A #3500/41 10 inch covered urn with platinum stippled decoration sold for \$343. The etching was not platinum encrusted; rather, the platinum was applied over what I would call the “details” of the pressed pattern.



A #40 Seashell flower or fruit arranger (commonly referred to as the Flying Nude bowl) in Crown Tuscan with a Charleton decoration of enamel roses with gold highlights went for \$425 on a Fly Away Now offering.

### Etched Tableware & Stemware



An Amber #3400/68 cream & sugar with #2048 Nasturtium etching and gold trim sold for a mere \$42. I expected that buyers might have considered it cream of the crop, and given it a little more sugar.



A #134 cream and sugar in Pomona Green (the color formerly known as Avocado) sold for \$86.

A #707 low footed cake salver in PeachBlo with Rosalie etching went for \$160 Slice It Now.



An Ebony #1104 vase (made from the same mold as the cocktail shaker base) with D619 etching on the collar and the E520 vertical floral etching of roses down the sides sold for \$26 in an incognito listing. Now THAT was a bargain.

A #775 10 inch vase with panel optic in Light Emerald Green etched Cleo sold for \$138.

A #3400/10 11 inch center-handled sandwich tray in Forest Green with Gloria etching sold for \$200 Buy It Now.



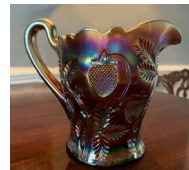
### Miscellaneous



A Martha Washington #30 80 ounce jug in Heatherbloom with crystal handle sold for the opening bid of \$28 in an incognito listing. The seller described it as “an antique sun purple large glass pitcher.”

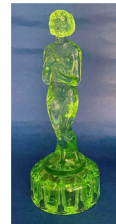
From the “We Never Got the Memo” department comes a 10 inch flared bowl, offered as the Cambridge “Tomato” color. For Pete’s sake... how many years ago did we figure out that this was not a Cambridge color, but Co-Operative Flint Glass Company’s “Sunset”? Not to mention NONE of the shapes in which this color can be found match any documented Cambridge shapes. It sold for \$50 Buy It Now.

A Near-Cut #2780 Inverted Strawberry Amethyst cream with carnival glass treatment sold for \$139 Buy It Now.



One seller offered a “Pink Depression Glass Condiment Set” consisting of a pair of #619 oils & stoppers and a #622 cream and sugar, set on a center handled tray identified as a #3130 (though I could not find this shape in my books), all in PeachBlo. The Buy It Now price was \$140, but the auction was ended by the seller because the item was “no longer available.” Hmmmm....

A scarce Mandolin Lady flower arranger in Light Emerald Green strummed away for \$195 Play It Now.



A pair of #1211 Everglade a.k.a. Leaf Line double candleabrum in Moonlight Blue emerged from the swamps. Glass gators competed for them, until one carried them away for \$238. Thanks to our readers, I now know to look carefully to determine whether pieces of Everglade in the light blue color are Moonlight Blue, or Willow Blue, since the pattern was pressed in both.

A large Buddha in Light Emerald Green sold out of Australia for \$824. The same seller offered one in Amber with the screw-on flower arranger base. It sold for the same figure.



That’s it for now. If you see any interesting Cambridge glass on eBay that you think I should be watching or reporting on, or if you have any other input, feel free to contact me at [LAGlass@pacbell.net](mailto:LAGlass@pacbell.net). I am well aware that I don’t catch every interesting listing, and now that eBay no longer has a category devoted to Cambridge glass, I will especially need your help. Until next time, happy Cambridge hunting!

Recruit  
and  
Retain

Give this page to a friend



The National Cambridge Collectors  
P.O. Box 416 ~ Cambridge, Ohio 43725

“FRIENDS OF CAMBRIDGE” MEMBERSHIP

The National Cambridge Collectors, Inc. (NCC) is a non-profit organization dedicated to the education and preservation of the great work of the Cambridge Glass Company. Founded in 1973, we depend on the financial support of our members, who we call **Friends of Cambridge**, for the majority of our operating budget. Won't you consider becoming a Friend of Cambridge? You can also complete this online at: <http://cambridgeglass.org/online/>

Friend #1 \_\_\_\_\_

Friend #2 \_\_\_\_\_

Friend #3 \_\_\_\_\_

(continue on reverse if needed - indicate any children and their year of birth, only those 18 and older residing in your household may vote)

Address \_\_\_\_\_

City/State/Zip \_\_\_\_\_

Email Address (required) \_\_\_\_\_

Phone Number \_\_\_\_\_

Crystal Ball newsletter delivery: \_\_\_ email (color) \_\_\_ paper (black & white)

Glass collecting interest: \_\_\_\_\_

New Member? (Y/N) \_\_\_ or Renewal? \_\_\_ If renewal, Member #s \_\_\_

*Levels of Membership*

Patron \$ 35

Century Level	\$ 100	Mardi Gras Level	\$ 200
Japonica Level	\$ 500	President's Circle	\$ 1,000

*All members receive the Crystal Ball, free Museum admission and 10% off any book/DVD purchases, President's Circle includes Convention registration for two members in the household and one free copy of any new NCC publication.*

All memberships are renewed annually via The Annual Fund mailing in late March/early April. All Annual Fund gift recognition levels are per household and include membership for everyone within the household 18 and older. Each household will receive a subscription to the Crystal Ball newsletter, unlimited admissions to the museum, and rights to vote in elections for the Board of Directors and discounts on NCC books. NCC is a 501(c)(3) organization and Annual Fund gifts are allowed as a tax deduction under Section 170 of the Internal Revenue Code. Contact your tax advisor for your individual situation.

Return this form with check or money order payable to NCC, Inc. at the above address.  
And always visit us at [www.cambridgeglass.org](http://www.cambridgeglass.org) to see what's new!



# For Sale - NCC Publications

Published by NCC • Members receive a 10% discount

TITLE		REGULAR PRICE	MEMBER PRICE
<b>1903 Cambridge Glass Catalog reprint</b>	106 page reprint, paperback.	\$5.56	<b>\$5.00</b>
<b>1910 NearCut Catalog Reprint</b>	108 pages, paperback, no price guide	\$14.95	<b>\$13.45</b>
<b>1927-29 Catalog Reprint</b>	66 pages, paperback, no price guide, includes identification guide	\$9.95	<b>\$8.95</b>
<b>1930-34 Catalog Reprint</b>	250 pages, paperback with 2000 price guide	\$14.95	<b>\$13.45</b>
<b>1930-34 Catalog Index</b>	Index for above	\$2.00	<b>\$1.80</b>
<b>1940s Cambridge Glass Catalog reprint</b>	613 page reprint, 3 hole punched	\$19.95	<b>\$17.95</b>
<b>1949-53 Catalog Reprint</b>	300 pages, paperback, no price guide	\$19.95	<b>\$17.95</b>
<b>Cambridge Rose Point – A Collector’s Guide 2018</b>	color, spiral bound	\$29.95	<b>\$27.00</b>
<b>Cambridge Rose Point – 2nd Edition 2007</b>	146 pages, paperback, no price guide	\$19.95	<b>\$17.95</b>
<b>Caprice</b>	200 pages, paperback, no price guide	\$19.95	<b>\$17.95</b>
<b>Decorates</b>	136 pages, paperback, no price guide	\$14.95	<b>\$13.45</b>
<b>Etchings 2nd Edition 2006</b>	102 pages, paperback, no price guide	\$17.95	<b>\$16.15</b>
<b>Etchings: Blossomtime</b>	26 pages, paperback, no price guide	\$7.95	<b>\$7.15</b>
<b>Etchings: Candlelight</b>	30 pages, paperback, no price guide	\$7.95	<b>\$7.15</b>
<b>Etchings: Chantilly</b>	44 pages, paperback, no price guide	\$7.95	<b>\$7.15</b>
<b>Etchings: Diane</b>	53 pages, paperback, no price guide	\$7.95	<b>\$7.15</b>
<b>Etchings: Elaine</b>	64 pages, paperback, no price guide	\$7.95	<b>\$7.15</b>
<b>Etchings: Portia</b>	57 pages, paperback, no price guide	\$7.95	<b>\$7.15</b>
<b>Etchings: Wildflower</b>	42 pages, paperback, no price guide	\$7.95	<b>\$7.15</b>
<b>Rock Crystal Engravings</b>	119 pages, paperback, no price guide	\$17.95	<b>\$16.15</b>
<b>Rock Crystal Engravings (Listings)</b>	Companion to above; lists all pieces in all patterns	\$9.95	<b>\$8.95</b>
<b>Other:</b>			
<b>Cambridge Ohio Glass in Color</b>	by Mary, Lyle and Lynn Welker 30 pages, color	\$6.61	<b>\$5.95</b>
<b>Reflections</b>	by Degenhart Paperweight & Glass Museum 45 pp	\$5.56	<b>\$5.00</b>

## How to Order by Mail or from the NCC Website

Send orders to:  
NCC • PO Box 416 • Cambridge, OH 43725

OHIO RESIDENTS PLEASE ADD 7.25% SALES TAX

SHIPPING:  
\$8.00 FOR THE FIRST PUBLICATION  
\$2.00 FOR EACH ADDITIONAL ITEM

Please include your name, complete mailing address and your phone number or e-mail address.

Payments by check or Money Order only, payable to NCC

Books may also be purchased on the NCC website,  
[www.cambridgeglass.org](http://www.cambridgeglass.org).

available on  
**amazonkindle**

The following books can be purchased on Amazon and downloaded to your Kindle device



Cambridge Glass Colors



Cambridge Rose Point

## NCC Events

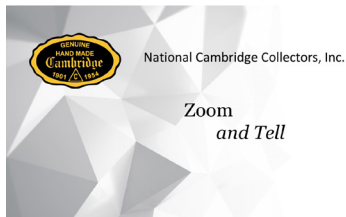
\*\*\*\*\*

**2022 NCC Convention  
June 23-25, 2022**

\*\*\*\*\*

**Fall Membership Meeting  
Friday October 8, 2022**

\*\*\*\*\*



Contact [membership@cambridgeglass.org](mailto:membership@cambridgeglass.org) if you don't get the monthly email with the Zoom information.

May                      Rubina and Sunset

## Member Benefit

Each NCC household is allowed one free 20-word classified ad in the Crystal Ball per calendar year as part of their membership. This can be a "For Sale" or "Wanted" type of classified ad. Submit your ad by email to [editor@cambridgeglass.org](mailto:editor@cambridgeglass.org)

## CLASSIFIEDS

### Cambridge glass and Krome Kraft For Sale

Selling collection of Krome Kraft with Cambridge inserts, and Cambridge Glass pieces. Would like to dissolve collection of +/-300 pieces. Salt & Peppers, Cream & Sugars, Compotes, Lazy Susan, Pitchers, Decanters, trays, misc serving pieces, most colors. Please pick up while traveling this spring/summer. In Illinois. Contact Sue: [sd.camp@frontier.com](mailto:sd.camp@frontier.com)

### May 12-13, 2022

Hudson Valley Depression Glass Club  
20th Century Glass, Pottery and Vintage Accessories Show  
Veterans Memorial Building / 413 Main St.  
Beacon, NY  
845-702-4770

### June 4-5, 2022

Old Morgantown Glass Show & Sale  
33rd Annual Convention  
Westover VFW Hall / 340 Holland Ave.  
Westover, WV  
[leasure@earthlink.net](mailto:leasure@earthlink.net)

### June 10-12, 2022

Fostoria Glass Society of America  
41st Glass Show & Sale  
Moundsville Center Building / 901 Eight St.,  
Moundsville, WV. 26041  
<http://www.fostoriaglass.org>

### June 15-18, 2022

2022 National Heisey Convention and Glass Show  
Reese Ice Arena / 935 Sharon Valley Rd  
Newark, OH 43055  
<http://www.heiseymuseum.org>

### June 18-19, 2022

Tiffin Glass Collectors Club  
35th Annual Artistry In American Glass Show and Sale  
Tiffin Middle School / 103 Shepherd Dr  
Tiffin, OH  
<http://tiffinglass.org>

### July 9-10, 2022

NDGA 46th Annual Convention Show and Sale  
Wellington High School / 1700 E 16th St  
Wellington, KS 67152  
<http://www.ndga.net>

### July 16-17, 2022

Fostoria Glass Society of Tennessee  
22nd Annual Show & Sale / The Fairgrounds, Nashville  
500 Wedgewood Ave  
Nashville, TN  
<http://www.fostoria-tennessee.com>



## New Members

Did you recruit a member?

# DEALER DIRECTORY

Dealer Directory - \$24 for 12-months, size limited by box (see below). Includes listing on NCC website. Electronic submissions should be emailed to: [editor@cambridgeglass.org](mailto:editor@cambridgeglass.org)

## Advertising Rates:

1/8 page \$15      1/4 page \$20  
1/2 page \$30      Full page \$50

Mailed submissions and all payments should go to PO Box 416, Cambridge, OH 43725. Deadline is 10th of preceding month. Ads must be paid in advance. Show listings are FREE; send info to PO Box or e-mail address 60 days before event.

<p style="text-align: center;"><b>Max Miller</b> <b>Elegant American Glassware</b> <a href="http://www.maxmillerantiques.com">www.maxmillerantiques.com</a></p> <p>The Market Place 10910 Katy Freeway.      713-410-4780 Houston TX 77043      <a href="mailto:mmxglass@aol.com">mmxglass@aol.com</a></p>	<p style="text-align: center;"><b>ISAACS ANTIQUES</b> (740) 826-4015</p> <p style="text-align: center;">↔ located in ↔ <b>DealBusters Marketplace</b> <b>61 S. 2nd Street</b> <b>Byesville, OH</b> <b>(740) 605-1010</b></p>
<p style="text-align: center;"><b>Glen &amp; Carolyn Robinson</b> <b>White Rose Antiques</b> Specializing in Depression Era Glassware</p> <p style="text-align: center;"><b>2454 McFarland Road</b> <b>York, SC 29745</b></p> <p>803-684-5685 <a href="mailto:gandcrobinson@aol.com">gandcrobinson@aol.com</a> <a href="http://whiteroseglassware.com">whiteroseglassware.com</a></p>	<p style="text-align: center;"><b>MARGARET LANE ANTIQUES</b></p> <p><b>2 E. Main St. New Concord, OH 43762</b> Lynn Welker      (740) 705-1099</p> <p>Cambridge Glass Matching Service Hours: Mon-Fri 10-12 AM, 1-5 PM or by appointment</p>
<p style="text-align: center;"><b>CRYSTALLINE COLORS</b> <i>Cambridge • Fostoria • Elegant Glass</i> Booth and Showcases in the <b>Medina Antique Mall</b> Medina, OH (I-71, exit 218)</p> <p style="text-align: center;">Lynne R. Franks    216-661-7382</p>	<div style="background-color: #4b0082; color: white; padding: 5px; text-align: center;"> <p><b>Connecting Buyers &amp; Sellers!</b></p> <p>Tell us what you are looking for and we help find it.</p> <p><b>CAMBRIDGE GLASS.US</b></p> <p>P. Snyder 740-601-6018</p> <p><b>E-Mail and Find Your Glass!</b></p> <p><a href="mailto:psnyder@cambridgeglass.us">psnyder@cambridgeglass.us</a></p> <p><a href="http://www.cambridgeglass.us">www.cambridgeglass.us</a></p> </div> <div style="text-align: center; margin-top: 5px;">  <p><b>E-Blast</b></p> </div> <p style="font-size: small;">When you are searching for Cambridge glass, email your request and it is emailed to all members and dealers. P. Snyder, 1500 Edgewood Dr., Circleville, Ohio 43113</p>
<p style="text-align: center;"><b>CRYSTAL LADY</b> 1817 Vinton St.      Omaha, NE 68108 <b>Bill, Joann and Marcie Hagerty</b> 402-699-0422</p> <p>Specializing in Elegant Glass &amp; Collectibles <a href="http://www.crystalladyantiques.com">www.crystalladyantiques.com</a></p>	<div style="border: 2px solid red; padding: 10px; text-align: center;"> <p style="font-size: large; color: green;"><b>Our House Antiques</b></p> <p>Linda and David Adams Las Vegas, Nevada 702-302-8282</p> <p><i>Shows and Mail Order only</i> email: <a href="mailto:David@OurHouseAntiques.com">David@OurHouseAntiques.com</a> <a href="http://www.OurHouseAntiques.com">www.OurHouseAntiques.com</a></p> <div style="display: flex; justify-content: space-around; align-items: center;">   </div> </div>



National Cambridge Collectors, Inc.  
PO Box 416  
Cambridge OH 43725  
email: editor@cambridgeglass.org  
website: www.cambridgeglass.org



## Friends of Cambridge – Annual Fund

NCC exists through member giving using an Annual Fund system to raise operating funds and to ensure the preservation of Cambridge glass for future enthusiasts. The Annual Fund uses a common member "renewal" date and NCC sends out Annual Fund materials to everyone once a year. There are no monthly reminders or monthly renewal dates. The Annual Fund is NCC's primary means of support and all Annual Fund gift recognition levels are per household and include membership for all adults within the household. Additionally, each household will receive a subscription to the Crystal Ball newsletter, unlimited admissions to the museum, and rights to vote in elections for the Board of Directors. Multiple households at the same address are welcomed. NCC is a 501(c)(3) organization and Annual Fund gifts are allowed as a tax deduction under Section 170 of the Internal Revenue Code.

### Levels of Membership

Patron	\$35
Benefactor - Century	\$100
Benefactor - Mardi Gras	\$200
Benefactor - Japonica	\$500
President's Circle	\$1,000

President's Circle includes Convention registration for two members in the household and one copy of any new NCC publications.

## ***The National Museum of Cambridge Glass***

Located at 136 S. 9th Street  
in downtown Cambridge  
Wed-Sat 9-4  
Sunday 12-4

