



Cambridge Crystal Ball

Published by the National Cambridge Collectors, Inc. as a resource which informs, invites and inspires people to encourage the continued preservation of the glass produced by the Cambridge Glass Company of Cambridge, Ohio for future generations.

Issue No. 557

ISSN 2474-5987

April 2022

Photos from the March Auction

by David Ray



What's Inside

Photos from the March Auction.....	1
President's Message	3
New Museum Season Begins April 1 st	4
Convention 2022: Color My World	7
Convention 2022: Schedule	8
Convention 2022: Registration Form.....	9
Zoom & Tell: Opal, Carrara and Milk	10
2022 Board of Directors Election	11
2022 March Benefit Auction Results	14
Volunteer Opportunity.....	15
Wanted: Glass Dash Participants	15
eBay Report	16
New Members.....	18

National Cambridge Collectors, Inc.

PO Box 416 Cambridge, OH 43725-0416

Board of Directors

	2022	
Julie Buffenbarger	David Rankin	Frank Wollenhaupt
	2023	
Nancy Misel	Lindy Thaxton	Lynn Welker
	2024	
Cindy Arent	Larry Everett	Mike Strebler
	2025	
Ken Filippini	Freeman Moore	Christine Smith

Officers

President	Freeman Moore
Vice-President	Ken Filippini
Secretary	Nancy Misel
Treasurer	Mike Strebler
Sergeant-at-Arms	Larry Everett

Committees

Endowment	Doug Ingraham
Finance	Mike Strebler
Property	Larry Everett
Strategic Planning	Mike Strebler

Member Services

Vice President

Member Relations
Convention
Member Social Media
Glass Dash
Glass Show
Study Groups
Webmaster

Freeman Moore
Freeman Moore, Membership Database
Larry & Susan Everett
David Ray
Larry Everett & Frank Wollenhaupt
David Ray, Mike Strebler, Jack Thompson
Jeannie Moore, Study Group Coordinator
David Adams

Development

Vice President

Campaigns

Events

Projects
Publicity

Julie Buffenbarger
Ken & Jane Filippini, Annual Fund Directors
Larry Everett, Director of the Heritage Society
Bev & Will Acord,
Lynn Welker, Auction Managers
Susan Everett & Frank Wollenhaupt, Jewelry
Convention: Jonathan Fuhrman

Education

Vice President

Crystal Ball
Digital Archivist
Programs
Publications
Media Productions
Research

Jack Thompson
Freeman Moore, Editor
Dave Rankin
(open)
Larry Everett, Director of Publications
Dave Rankin, Director of Media Productions
Dave Rankin, Director

Museum

Vice President

Public Operations
Facilities & Grounds

Inventory Management
Collections
Museum Gift Shop

Archivist
Museum Social Media
Community Relations

Cindy Arent
Lindy Thaxton, Director of Public Operations
Cindy Arent,
Joe Miller,
Lindy Thaxton
Lindy Thaxton, Director of Inventory Management
Lynn Welker, Director of Collections
Cindy Arent, Gift Shop Manager
Lynn Welker, Gift Shop Manager
Mark Nye, Director of Archives
Cindy Arent, Director
Cindy Arent

Administration

Vice President

Accounting & Finance

Larry Everett
Lisa Neilson, Office Manager

MEMBERSHIP QUESTIONS?

Please send address changes to:
Membership - NCC
PO Box 416
Cambridge, OH 43725-0416
or by e-mail to:
membership@cambridgeglass.org



CONTACT US

NCC Business Manager
Phone: 740 432-4245

businessmanager@cambridgeglass.org



Freeman Moore, President

e-mail: president@cambridgeglass.org

Nancy Misel, Secretary

e-mail: secretary@cambridgeglass.org

Heritage Society

Ensuring the preservation mission of the NCC through planned giving and estate bequests.

Members of The Heritage Society are those who have included the NCC in their wills or estate plans, thus providing the organization with a secure future.

The mission of The Heritage Society is to foster smart estate planning and to assure that NCC is not forgotten as an important beneficiary. Any pledge is meaningful and appreciated.

All Cambridge collectors - both current and future - will benefit from, and be grateful for your support.

Let us know how we can help with your future plans.

Museum:

National Museum of Cambridge Glass



Like us on Facebook

Member: Cambridge Glass/National Cambridge Collectors

NCC Website: www.CambridgeGlass.org

NCC Museum Website: www.cambridgeglassmuseum.org

Miami Valley Study Group Website: www.mvsg.org



PRESIDENT’S MESSAGE

Spring Time Activities

Yes, we had the March auction! Many thanks for Bev & Will Acord and Lynn Welker auction co-managers as well as *all* of the help they utilized in photographing, organizing, and finally displaying the glass for the auction.

Yes, we’re planning for June convention! Susan and Larry Everett are convention co-chairs for this year’s convention “Color My World”. You’ll find their article along with the schedule of events and the registration form in this issue. Make your plans to join us in-person after missing out on events the past two years.

Yes, April also means it is time for the Annual Fund mailing. In case you might have forgotten, NCC uses the Annual Fund as your opportunity to renew your commitment to NCC and our efforts in education and preservation. You, our Friends of Cambridge, contributed over \$55,000 to the Annual Fund drive in 2021. We don’t send out “membership renewal notices”, your participation in the Annual Fund drive serves that purpose. Thank-you for your support.

The Annual Fund mailing also includes the ballots for the board of directors election. I encourage you to read the biographies of the four candidates that is included in this issue of the Crystal Ball, and to promptly send in your Annual Fund contribution along with your ballots. Ken and Jane Filippini will be getting the materials organized and sent out by mid-April. It is quite a chore to prepare a mailing for nearly 500 households, so thanks to Ken and Jane for handling this task.

Your NCC Board of Directors consists of twelve individuals who volunteer their time to provide direction for this organization. Organizationally, we have five operational Vice-Presidents who manage the effort of getting work done for this organization. As near as I can determine, we have always had twelve directors. At the June Annual Meeting, the membership will be asked

to approve a change to our Constitution to increase the number of directors to fifteen. If approved, the board size will increase by one over three years. Why the change? The board needs to expand to get new perspectives and diversity of thought. Think about this proposed change and ask questions prior to the Annual Meeting.

On a positive note, let’s celebrate National Volunteer Week, April 17-23, 2022. National Volunteer Week is a time for organizations across the country to honor volunteers for the irreplaceable impact of their time and energy all year round. We have some great people helping accomplish what needs to be done. We could always use more, and I’m sure, relief for some of those who have been doing the same job for years. If you’re not sure how you can help, drop me an email and I’ll connect you with the appropriate contact. You’ll also see a monthly notice in the Crystal Ball “Volunteer Opportunities”.

What’s coming?

Monthly Zoom & Tell sessions have allowed members to show examples of Cambridge glass following a monthly color theme. Participation has stayed steady with about 50 people joining each month. Thank you to Julie Buffenbarger for hosting, and to David Ray for providing the monthly write-ups for the Crystal Ball. If you can’t attend a session, ask to view the video recording.

What’s on your Cambridge “wish list” for this year and beyond, and how can we help?

Stay energized and share the word!

Sincerely,

Freeman Moore
president@cambridgeglass.org

New Museum Season Begins April 1st

By Cindy Arent

As the 2022 season unfolds, many new displays and experiences await visitors to the Museum. Members who stopped by the museum during auction weekend were able to see the new displays before the general public. The museum is open April through October; Wednesday – Saturday; 9 am – 4 pm and Sunday from noon - 4 pm.

The Cambridge V.F.W. Post 2901 has generously donated a new 5' x 8' flag. This is the fourth year they have supported our organization and with a flag donation. Due to wind and weather, the flag needs to be replaced each year. Also, the rope will need replaced and we will contact the Cambridge Fire Department to see if they are able to help us with the project sometime this year.



The new flag has been raised for the season and was donated by the Cambridge VFW Post 2901. (L-R) Cindy Arent, Lindy Thaxton and Sandi Rohrbough.

One of the best kept secrets at the Museum is The Edna McManus Shepard Education Center. Many improvements have been made during the winter months, so if you visit the Museum be sure to see what this area has to offer.

Spring projects are in the process of completion. The Museum Wi-Fi has been boosted through a grant from the Cambridge Kiwanis Foundation. Previously, the front area of the museum had very weak service. The student activity booklets, given free to children who visit the Museum, have also been updated and reprinted, as well as the Museum Tour Guides. The printing was also accomplished through the Kiwanis Grant.

I was notified that we received a marketing/advertising grant again this year from the Cambridge/Guernsey County Visitors & Convention Bureau. The Grant Assistance Program is available to area non-profit organizations. This year, we will receive \$5,000.00 at the conclusion of the grant period.

NCC members attended the Cambridge Area Chamber of Commerce Annual Dinner representing our organization. There were over 400 people in attendance at the Pritchard Laughlin Civic Center for the event. Those attending were Sharon and Joe Miller, Jeff and Jill Ross, Lindy Thaxton, Sandi Rohrbough, Anna Pavlov and Cindy Arent. We enjoyed talking with several members from the community.

In March, Jack Burriss and Jennifer Miller from the Heisey Glass Museum stopped for a visit. It was fun showing them our new exhibits and sharing our organization's upcoming events.

It was nice to see so many members at the museum during the Annual Auction and we look forward to greeting many more friendly faces this season. If you are unable to visit, the Museum Facebook page has frequent posts about what is happening at the museum.

Happy Spring and thank you for your support! ■



Les Hansen was the first visitor of the season and the first name in the 2022 Museum Guest Book. It was so nice to see everyone!

Our friends from the Heisey Glass Museum stopped for a brief visit in March.

Having fun in the Museum Speakeasy are Jennifer Miller and Jack Burriss, Curator/ Director of the Heisey Museum.



NCC members, Roger and Millie Loucks, enjoyed looking at the beautiful, freshly cleaned Cambridge Glass on display.



This original ad for the Sweet Potato Vase states, "One of the Fastest Selling Novelties of the Year." The vase came complete with hanger for \$1.00.

This Sweet Potato Vase with original hanger is located in the Education Center on the wall above Mr. Bennett's desk.



Freeman and Jeannie Moore visited the Green River Glass Show in Kent, WA, chaired by NCC member Kay Larrson.

If anyone wants a 3 ft NCC club sign, there was one for sale at the show!

Convention 2022: Color My World

By Susan and Larry Everett

Please make plans to attend the annual NCC Convention this year. The theme “Color My World” will celebrate the many wonderful colors that Cambridge Glass manufactured. You will find the convention schedule of events and the registration form included in this issue.

Please list your favorite Cambridge Glass color on your registration form. We will announce the most popular colors listed by convention attendees before the banquet Friday evening.

As you will note on the convention schedule welcoming activities will be held at the National Museum of Cambridge Glass. If you have never experienced the museum you are in for a real treat. The address is 136 S 9th Street, Cambridge, Ohio. Even if you have been to the museum you will be amazed at all the new exhibits and improvements that have taken place during the “closed” season.

If you are fairly new to convention activities or Cambridge Glass please let that be known. You will find we are a friendly bunch that will welcome you and happily answer questions to put you at ease.

The new video production “The Cambridge Glass Company – Quality through Courage and Innovation” will be shown at the museum on Wednesday and Thursday afternoons. Please refer to the schedule for exact times.

Chris Smith and David Ray are heading up the display case activities this year. If you would like to assist, let us know. Plans are near completion.

Plan in attending an informative presentation on the extensive information available in the digital Cambridge Glass Library. This session will be presented by Larry Everett and Dave Rankin on Thursday afternoon. You will also receive helpful tips for new users.

We are fortunate to have nationally known authors and dealers, Margaret & Kenn Whitmyer, with us this year. They will present a program on Cambridge Perfumes and Vanity Items on Thursday evening.

The Glass Show will open on Friday afternoon. The team heading this event are David Ray, Jack Thompson, and Mike Strebler. The good news is that the show is full and there is a standby list of quality dealers waiting to entice you.

Saturday evening join us for the Cocktail Reception and Dinner. Don’t forget to bring your favorite Goblet. Bring your Colored Vase to provide the table decoration, no flowers required. If you wish, take one or both to Show and Tell later in the evening.

Saturday morning will feature the Glass Dash. This event is unique in that dealers cannot set glass out for sale until the customers come through the door. It’s always a frenzy trying to be in the right place at the right time to have a treasure set out when you are within grasping distance.

Friday evening will see the ever-popular Bring and Brag presentation by Lynn Welker. Collectors always try to outdo each other to present stunning items from their collections.

A new feature this year will be the Saturday afternoon Tea & Coffee. The inaugural event is free and a wonderful opportunity to sit, relax, visit, and share convention finds.

Saturday evening will feature Larry Everett as he shares some of the new information that has been uncovered during the digital archival efforts and Cambridge Glass Library development.

It’s never too early to make your reservations. We look forward to seeing everyone!

June 2022

Sunday	Monday	Tuesday	Wednesday	Thursday	Friday	Saturday
			1	2	3	4
5	6	7	8	9	10	11
12	13	14	15	16	17	18
19	20	21	22	23	24	25
26	27	28	29	30		



“Color My World”

2022 National Cambridge Collector’s, Inc. Convention Schedule

(Programs subject to change)

WEDNESDAY, JUNE 22

WELCOME TO CAMBRIDGE

Event Location

9:00 – 4:00 pm	National Museum of Cambridge Glass Open	Museum
2:00 – 4:00 pm	Registration	Museum
1:30 - 2:15 pm	Cambridge Glass Documentary Video, Cindy Arent	Museum
	Meals - On your own	

THURSDAY, JUNE 23

9:00 – 11:00 am	Registration	PLCC Galleria
10:00 - 11:00am	Orientation/Meet our New Attendees	PLCC Conference Room
	Things to Do Around Cambridge – Everyone Welcome!	
11:00 - 12:45 am	Lunch – On Your Own	
1:00 - 1:45 pm	Cambridge Glass Documentary Video, Cindy Arent	Museum
2:15 - 3:00 pm	Cambridge Glass Library Users Guide David Rankin and Larry Everett	PLCC Conference Room
5:00 – 6:00 pm	Registration Open	PLCC Galleria
5:00 pm	Cocktail Reception	PLCC Galleria
6:00 pm	Buffet Dinner – BOD Election Results	PLCC Galleria
7:15 - 8:30 pm	Cambridge Perfumes & Vanity Items Margaret & Kenn Whitmyer	PLCC Conference Room

FRIDAY, JUNE 24

8:00 am	Advance Numbers for Show Available	PLCC Galleria
8:00 am	Glass Dash Table Set-up – You are welcome to help	St. Benedict’s Gym
9:30 -10:30 am	Cambridge Colors – Museum Tour	Museum
10:30 am - Noon	Registration Open	PLCC Galleria
12:45 pm	Those with advance numbers may line up	PLCC Galleria
1:00 – 5:00 pm	Glass Show	PLCC Exhibit Hall
3:00 - 4:00 pm	Guided Tour Show Cases	PLCC Galleria
5:00 – 6:00 pm	Registration Open	PLCC Galleria
5:00 pm	Cocktail Reception/President’s Circle Salute	PLCC Galleria
6:00 pm	Buffet Dinner – Bring your favorite Goblet and Vase	PLCC Galleria
6:45 pm	Annual Meeting/Awards Presentations	PLCC Galleria
7:45 - 8:45 pm	Bring & Brag and Glass ID – Lynn Welker	PLCC Conference Room

SATURDAY, JUNE 25

7:00 am	Glass Dash Opens– Early Bird Admission - \$10	St. Benedict’s Gym
8:30 – 11:00 am	Glass Dash Regular Admission - \$5	St. Benedict’s Gym
10:30 – 4:00 pm	Glass Show	PLCC Exhibit Hall
3:00 pm	Tea & Coffee – Visit, Relax & Share Your Convention Finds	PLCC Conference Room
5:30 – 6:30 pm	Casual Buffet	PLCC Galleria
6:30 - 7:30 pm	Cambridge Glass New Discoveries- Larry Everett	PLCC Conference Room

PLCC – Prichard Laughlin Civic Center - 7033 Glenn Hwy, Cambridge, OH
 Museum – National Museum of Cambridge Glass - 136 S 9th St, Cambridge, OH
 St. Benedict’s Gym – 701 Steubenville Ave (parking lot) Cambridge, OH

Registration Form

**Forty Ninth Annual Convention -National Cambridge Collector's, Inc.
June 23 - June 25, 2022**

“Color My World”

Name of Registrant <i>(As you wish it to appear on your Name Badge)</i>	First Convention?		Favorite Color
_____	Yes	No	_____
_____	Yes	No	_____
_____	Yes	No	_____

Address: _____ State _____ Zip _____

Email address _____ Phone Number (_____) _____
(Registration confirmation will be sent via email if the above information is provided)

ACTIVITY	FEE	NUMBER ATTENDING	TOTAL
<i>President's Circle or Show Dealer (limit 2/show booth)</i>		_____	<u>No Charge</u>
Convention Orientation/Meet our new attendees		_____	<u>No Charge</u>
Saturday Tea & Coffee		_____	<u>No Charge</u>
Registration (June 1 deadline)	\$30.00	_____	_____

Thursday Dinner* **\$20.00** _____
Buffet: Maple Bacon Glazed Stuffed Pork Chops, Oriental Chicken Stir-Fry with Vegetables, Rice Pilaf, Scalloped Potatoes, Green Bean Lyonnaise, Family Style Salad, Breadsticks and Butter, Variety of Cakes, Beverages (Sweet Tea, Ice Tea, Coffee, Water)

Friday Dinner, Annual Meeting & Awards* **\$28.00** _____
Buffet: Carved Sirloin of Beef, w/Au Jus & Horseradish Sauce, Chicken Cordon Bleu, Salted Baked Potatoes w/ Butter, Sour Cream & Chives, Buttered Corn w/Dill, Glazed Baby Carrots, Family Style Salad w/House Dressing, Rolls & French Bread w/Butter, Homemade Pies, Beverages (Sweet Tea, Ice Tea, Coffee, Water)

Saturday Dinner* **\$16.00** _____
Buffet: Variety of Mini-sandwiches (Turkey w/Cheese, Ham w/Cheese, Chicken Salad), Chicken Tenders w/BBQ, Ranch and Buffalo, Potato Salad, Vegetables w/Dip, Fresh Fruit, Variety of Cookies, Beverages (Sweet Tea, Ice Tea, Coffee, Water)

TOTAL DUE _____

Please remit total by mail to: NCC Convention Registration, P.O. Box 416, Cambridge, OH 43725-0416
Convention chairs may be contacted electronically at everettnc1@gmail.com

** Meals include seating charges, taxes, and gratuity. Cocktails are available for an additional charge. Please contact us or by note below, if special meals are required due to dietary restrictions.*

Additional comments, special needs (e.g. gluten free, non-meat)

*By registering for this event, I grant permission to allow photographs and/or video recordings of me and or my guest(s) during this event for future use by the NCC. I release NCC and its entities from any liability or obligation that may arise as a result of the use of any and all images.
Registration as of: 3-20-22*

Zoom & Tell: Opal, Carrara and Milk

by David Ray

The February Zoom & Tell program featured the three different colors of milk glass produced at the Cambridge Glass Company: Opal, Carrara and Milk. Les Hansen lead the educational portion of the program by providing a detailed history on the production milk glass by Cambridge. Calcium Fluoride (Fluorite) was the main colorant in the batch formula that gave the glass its white opaque color. It is relatively easy to distinguish between the items produced in Opal, Carrara and Milk. Each milk color was produced several years apart, so new lines and items were in production during these three different eras. The first milk glass, named Opal, was introduced in 1903 and continued in production until around 1905. During these years, the Cambridge Glass Company was still owned by the National Glass Company. A variety of items were offered in Opal, but only a limited number of examples have been found.

approximately 2 years. The items produced in Carrara were limited to candlesticks, bowls, candy boxes, footed compotes and a small number of Community items. Azurite, Primrose, Jade, Ivory, Ebony and Helio were produced in a much greater quantity and using a greater variety of molds.



2800/237 night bottle and tumbler



#0065 9 1/2 in doric column candlestick



Queen Caster 2 bottle set



#112 7in plate

Now, fast forward 15-20 years to the “opaque era” when Cambridge produced its beautiful opaque colored glassware. The milk glass of this era was named Carrara. Compared to the vast number of items produced in the other opaque colors of this time, the production of Carrara was somewhat limited. Carrara was produced for

For most Cambridge glass enthusiasts, we often think of the milk glass pieces produced during the mid-1950’s. Cambridge called their third production of white opaque glass Milk. Milk was introduced in 1954 and production lasted only 6 months until the company closed. Given the large volume of Milk that can be found, Cambridge must have produced a large quantity of Milk during this short period of time. Other glass companies like Fenton and Westmoreland were also producing large quantities of milk glass during this era. Cambridge produced a variety of decorator and utilitarian items from various lines in Milk. These lines include Caprice, Everglade, Martha Washington, Mount Vernon and Sea Shell. Some specialty items were produced for Farber Brothers.



2800/235 puff box and cover



#102 6 in bonbon and cover D120 rose

A handful of items from the Sea Shell line were sold to the Charleton Decorating Company where an attractive bouquet of enameled pink roses highlighted by gold spatter and a solid band of gold was applied to the glass. This decorating is different from any of the Charleton floral designs applied to Crown Tuscan. ■



Mt Vernon #74 7oz honey jar



Farber 6131 76 oz pitcher
3400 7 1/2 in high brass holder



SS17 9 in 3toed bowl



Mt Vernon #88 shaker chrome top



3550/237 vase 4 1/2 in



Mt Vernon #12 4 1/2 in footed rose bowl



#1043 8 1/2 in swan type3



SS31 8 in oval dish
Charleton spattered roses

2022 Board of Directors Election

We are proud to present this slate of four (4) candidates for this year's election. Listed in alphabetical order, they are:

- Julie Buffenbarger
- David Rankin
- Stuart Sandler
- Frank Wollenhaupt

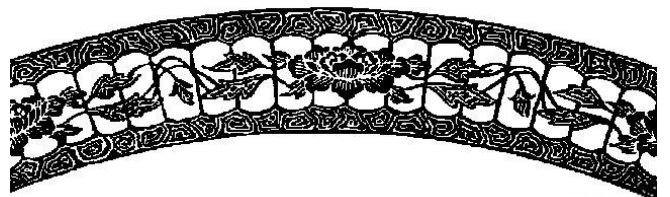
Each candidate was invited to submit a picture and biography about their selves. Please take the time to read through their material.

You will receive your ballots as part of the Annual Fund Mailing which will be done in early April.

Make sure to return your ballot prior to June 18 so it can be counted prior to the Annual Meeting.

Thank you to all of the candidates for offering to run for the board of directors. Volunteers make NCC a great organization.

David Ray,
2022 Nominating Committee



2022 Candidates for NCC Board of Directors

(Alphabetical order)



Julie K. Buffenbarger

I have been drawn and have loved old It has formed my preservationist's attitude -to advocate, protect and care for architecturally and historically significant buildings, structures, and objects of quality craftsmanship. This ideal permeates my professional career as a sustainability and durability concrete

consultant and is also inherent in my passion for Cambridge glass. I admire the intricate adornments of structures built from concrete and steel in the early 1900s and marvel at the artistry of glass from this same period. Likewise, Cambridge glass, with its intricate patterns, meticulous applications of gold, silver, and enamel decorates, and the variety of beautiful colors born from the science of mixing and firing of sand, clay, and other elements.

We each collect in many ways – by color, pattern or decorate, or by a specific article (e.g., ball jugs, animals, and ice buckets). But, we each have a common desire and goal - to preserve Cambridge glass's tangible history and culture. Today, our challenges include reaching our membership on traditional and contemporary platforms and becoming a more well-balanced multi-generational organization. To accomplish these tasks, NCC must:

1. Retain and engage our membership by facilitating in-person and increased remote educational and engagement activities (e.g., Zoom meetings, virtual tours, virtual conventions, and auctions.);
2. Encourage and engage young collectors by creating diverse outreach programs (social media, tours, programs, print, etc.);and,
3. Foster organizational partnerships (new, like-minded, and community).

Bringing entrepreneurial, innovation, and business development expertise from my corporate career has served NCC well with the adoption of lunches at auction and Zoom and Tell meetings.

If re-elected to the NCC Board, I will continue to use my professional skill sets in marketing and communication, business development, and education to continue the successful work done by my peers and predecessors at NCC. NCC must continue growing and adapting to become genuinely sustainable in the ever-changing collecting world.

My husband, Don and I will celebrate 28 years of marriage in 2022. We live in Medina, Ohio, with our six cats, Phoenix, Jeremiah, Zeus, Jasmine, Apollo, and Isis. I would be honored and excited to continue to serve on the Board of NCC as we move forward in making this a vibrant, everlasting organization preserving the history of Cambridge Glass.



David "Dave" Rankin

We all enjoy the fruits of Dave's Cambridge glass research, preservation, and education efforts. Dave has taken the auction glass photos, video recorded and enabled viewing of presentations and other key Cambridge Glass moments for many years. Most recently

he is working to digitally enhance and preserve the Cambridge Glass archives for future generations. This is a monumental and important task that no one wanted to tackle. His skill and attention to detail have moved this project to nearly 70% completion.

His most recent focus has been the creation of the Cambridge Glass Digital Library that you can access by visiting cambridgeglasslibrary.com. This herculean effort allowed Cambridge glass catalogs, price lists, circular letters and other original documents to be viewed and searched by anyone with Internet access. Much work remains and is in progress as of this writing.

Dave's initial web-based product is the site that we currently know as mvsg.org. Used mostly by those that search for colors, etchings, or specific Cambridge glass items. Currently there are more than 30,000 unique images available. This is also an evolving work that changes to meet the demands of users. Recent additions are the "News", "Upcoming Events" and "Charts and Listings" sections.

Making the best of a bad situation might describe Dave's efforts to move study group meetings from in-person to web based. This has allowed members nationwide to participate and enjoy monthly study group meetings. All are welcome to attend and participate.

Currently Dave serves NCC as Director of Research, Director of Media Productions, Director of the Digital Library, and Director of the Digital Archives. He also is a member of the Finance and the Endowment Committees. He previously served as chair of the Endowment Committee. Dave has served in almost every NCC office and capacity at one time or another. He is a recipient of the Phyllis Smith award.

Dave wishes to continue his service to NCC and members as a member of the Board of Directors. He welcomes comments, suggestions and questions.

2022 Candidates for NCC Board of Directors (Alphabetical order)



Stuart Sandler

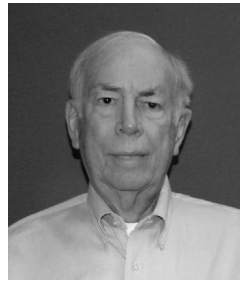
I first started collecting Cambridge glass in my late 20s. Living in Florida, where many retire, I frequently found glass "treasures." The Caprice line formed my initial collection, but my tastes evolved, and I started acquiring other patterns and lines into my collection. Although much of the Caprice is gone today, some pieces remain. Having joined NCC, I frequently acquired pieces via absentee bid at the NCC auction or through the DAZE. During this time, I met Bill and Phyllis Smith and other NCC members at local Depression Glass Shows and was inspired to join the NCC family.

Later my career brought me to northwest Indiana and closer to Cambridge, Ohio. In 2014, I attended my first NCC auction, and in 2015, my first convention! While living in Indiana, it also offered an opportunity to assist the Miami Valley Study Group with journal research at the University of Chicago's library archives. This research inspired me to volunteer in more NCC club endeavors. As a result, I displayed my ivy ball collection in 2019 at the NCC Convention and have assisted in tally ballots for board member elections. Since then, I have done my best to back NCC with my time and energy to various other NCC activities. Support has included donating NCC logo merchandise to support fundraising activities to benefit the Club, donation of glass to mini-auctions, and providing bubble wrap and other goods for the shipment of glass after the auction and from the gift shop.

While I have served the Club in the past in the formerly mentioned activities, I believe it is now time for me to participate more significantly. Serving on the NCC's board of directors would allow me to give back to the Club as repayment for what I have gained from NCC membership, many of whom I call friends.

As a board member, I would bring a vast array of organizational skills, ideas for the inclusivity of persons with diverse backgrounds and experiences, and a willingness and dedication to see projects and programs finish. While I will contribute ideas and experiences, I also understand that no one person is all-knowing. My profession has taught me that listening intently to others and collaborating are necessary for success. Working as a team allows quick achievement of goals, provides alternative perspectives and permits consideration of further possibilities than those considered individually. I want to thank the NCC membership for giving me this opportunity to serve NCC.

Currently, I live in the Florence area of South Carolina with my husband, where I am the Medical Director of Occupational and Employee Health for the McLeod Regional Health System. Our organization serves a community of over 13,000 citizens and 1400 client companies in the business and industrial communities.



Frank Wollenhaupt

Frank and his wife Vicki have been NCC members since March of 1973.

Frank has spent a total of 22 years serving on the board of directors. Elected in 1974 and serving till 1986, filled a partial term 2004 – 2006 and was elected again and served from 2010 thru 2014, and elected again in 2018.

While on the board, Frank served as Vice President of Member Services, Publicity chairman, Program and Entertainment, Study Group Advisor and Sergeant At Arms.

Over the life of the club, Frank has been a Convention Speaker, Program presenter worked on the original Colors in Cambridge Glass Book and Etchings by Cambridge Book, Vol. 1. He also procured the photographer for Colors Book 1.

Frank was a volunteer during the "Great Flood" clean up and continues to help with the annual cleaning effort at the museum.

Frank started writing the "Collectors" column many years ago when Bob Coyle was elected as president. For many years, he has been writing "Questions – No Answers" column for the crystal Ball.

Frank has assisted the auction committee for a number of years in the behind the scenes work of photos and organization.

Frank remains as one of the founding members of the Miami Valley Study Club. This study club is responsible for the web site (www.mvsg.org) that provides research information for all members and those interested in researching Cambridge Glass.

2022 March Benefit Auction Results

refer to the January 2022 Crystal Ball for descriptions

1.....\$25	54.....\$8	107.....\$18	160.....\$90	213.....\$575	266.....\$45	319.....\$15	372.....\$60
2.....\$25	55.....\$225	108.....\$20	161.....\$15	214.....\$50	267.....\$35	320.....\$30	373.....\$30
3.....\$25	56.....\$80	109.....\$140	162.....\$10	215.....\$80	268.....\$30	321.....\$10	374.....\$30
4.....\$20	57.....\$40	110.....\$50	163.....\$25	216.....\$90	269.....\$20	322.....\$20	375.....\$25
5.....\$25	58.....\$110	111.....\$20	164.....\$15	217.....\$80	270.....\$100	323.....\$25	376.....\$50
6.....\$40	59.....\$75	112.....\$30	165.....\$25	218.....\$120	271.....\$45	324.....\$125	377.....\$15
7.....\$30	60.....\$120	113.....\$45	166.....\$130	219.....\$160	272.....\$40	325.....\$25	378.....\$20
8.....\$20	61.....\$65	114.....\$45	167.....\$40	220.....\$140	273.....\$55	326.....\$15	379.....\$20
9.....\$35	62.....\$45	115.....\$45	168.....\$55	221.....\$240	274.....\$30	327.....\$30	380.....\$10
10.....\$155	63.....\$70	116.....\$70	169.....\$10	222.....\$125	275.....\$40	328.....\$30	381.....\$35
11.....\$20	64.....\$30	117.....\$150	170.....\$20	223.....\$15	276.....\$25	329.....\$30	382.....\$10
12.....\$65	65.....\$75	118.....\$30	171.....\$30	224.....\$45	277.....\$10	330.....\$35	383.....\$15
13.....\$60	66.....\$120	119.....\$40	172.....\$15	225.....\$215	278.....\$25	331.....\$45	384.....\$5
14.....\$40	67.....\$30	120.....\$70	173.....\$40	226.....\$90	279.....\$45	332.....\$30	385.....\$60
15.....\$70	68.....\$80	121.....\$35	174.....\$20	227.....\$10	280.....\$50	333.....\$45	386.....\$15
16.....\$115	69.....\$35	122.....\$75	175.....\$30	228.....\$825	281.....\$30	334.....\$60	387.....\$15
17.....\$18	70.....\$8	123.....\$50	176.....\$50	229.....\$80	282.....\$15	335.....\$70	388.....\$35
18.....\$275	71.....\$50	124.....\$115	177.....\$110	230.....\$65	283.....\$35	336.....\$125	389.....\$40
19.....\$25	72.....\$85	125.....\$25	178.....\$65	231.....\$40	284.....\$10	337.....\$55	390.....\$25
20.....\$20	73.....\$25	126.....\$50	179.....\$50	232.....\$45	285.....\$35	338.....\$110	391.....\$10
21.....\$60	74.....\$25	127.....\$85	180.....\$80	233.....\$30	286.....\$60	339.....\$45	392.....\$75
22.....\$130	75.....\$50	128.....\$10	181.....\$40	234.....\$45	287.....\$25	340.....\$30	393.....\$45
23.....\$425	76.....\$120	129.....\$10	182.....\$25	235.....\$170	288.....\$130	341.....\$65	394.....\$25
24.....\$325	77.....\$50	130.....\$70	183.....\$30	236.....\$130	289.....\$30	342.....\$50	395.....\$40
25.....\$100	78.....\$150	131.....\$85	184.....\$35	237.....\$425	290.....\$75	343.....\$90	396.....\$90
26.....\$200	79.....\$20	132.....\$60	185.....\$50	238.....\$250	291.....\$45	344.....\$30	397.....\$30
27.....\$20	80.....\$45	133.....\$60	186.....\$60	239.....\$100	292.....\$15	345.....\$65	398.....\$23
28.....\$85	81.....\$40	134.....\$30	187.....\$90	240.....\$130	293.....\$20	346.....\$55	399.....\$20
29.....\$45	82.....\$25	135.....\$40	188.....\$125	241.....\$90	294.....\$10	347.....\$40	400.....\$10
30.....\$55	83.....\$55	136.....\$160	189.....\$30	242.....\$30	295.....\$35	348.....\$30	
31.....\$23	84.....\$285	137.....\$20	190.....\$200	243.....\$130	296.....\$15	349.....\$20	
32.....\$325	85.....\$45	138.....\$20	191.....\$55	244.....\$275	297.....\$10	350.....\$45	
33.....\$55	86.....\$35	139.....\$55	192.....\$15	245.....\$30	298.....\$30	351.....\$30	
34.....\$45	87.....\$40	140.....\$70	193.....\$175	246.....\$30	299.....\$90	352.....\$50	
35.....\$8	88.....\$85	141.....\$55	194.....\$375	247.....\$300	300.....\$30	353.....\$185	
36.....\$15	89.....\$20	142.....\$25	195.....\$25	248.....\$45	301.....\$40	354.....\$90	
37.....\$165	90.....\$55	143.....\$20	196.....\$55	249.....\$30	302.....\$70	355.....\$80	
38.....\$20	91.....\$20	144.....\$55	197.....\$13	250.....\$400	303.....\$45	356.....\$25	
39.....\$30	92.....\$20	145.....\$20	198.....\$30	251.....\$25	304.....\$20	357.....\$25	
40.....\$400	93.....\$35	146.....\$40	199.....\$255	252.....\$65	305.....\$25	358.....\$25	
41.....\$320	94.....\$55	147.....\$35	200.....\$160	253.....\$55	306.....\$95	359.....\$10	
42.....\$125	95.....\$90	148.....\$35	201.....\$35	254.....\$30	307.....\$50	360.....\$20	
43.....\$20	96.....\$20	149.....\$190	202.....\$195	255.....\$30	308.....\$75	361.....\$40	
44.....\$35	97.....\$25	150.....\$25	203.....\$250	256.....\$50	309.....\$55	362.....\$15	
45.....\$50	98.....\$35	151.....\$95	204.....\$100	257.....\$290	310.....\$65	363.....\$25	
46.....\$50	99.....\$20	152.....\$110	205.....\$75	258.....\$40	311.....\$60	364.....\$10	
47.....\$70	100.....\$45	153.....\$225	206.....\$70	259.....\$30	312.....\$10	365.....\$25	
48.....\$15	101.....\$55	154.....\$40	207.....\$40	260.....\$45	313.....\$5	366.....\$20	
49.....\$170	102.....\$70	155.....\$35	208.....\$35	261.....\$50	314.....\$140	367.....\$20	
50.....\$5	103.....\$30	156.....\$45	209.....\$40	262.....\$60	315.....\$40	368.....\$10	
51.....\$45	104.....\$20	157.....\$25	210.....\$70	263.....\$55	316.....\$75	369.....\$25	
52.....\$30	105.....\$60	158.....\$40	211.....\$25	264.....\$45	317.....\$305	370.....\$45	
53.....\$20	106.....\$50	159.....\$175	212.....\$90	265.....\$10	318.....\$10	371.....\$95	

Volunteer Opportunity

We can always use volunteers to help out with activities during convention.

- Larry and Susan Everett can use help with convention registration and making sure everything runs smoothly.
- NCC can also use your help to staff a membership table at the show to greet attendees and promote the benefits of being a Friend of Cambridge.

Let us know of your willingness to assist.



In Memoriam

Jeanne Warne Frontz member #7080 passed away February 2022 in Columbus, OH. Our thoughts and prayers are with the family.

WANTED

Glass Dash Participants

We are on the lookout for several interested glass dealers for the 2022 Glass Dash which will be held Saturday June 25, at the St. Benedict's Gym, the same location as the past several years. The dash is where everyone gets the same chance to add that rare item to the collection.

We are looking for anyone that is wanting to reduce their collection or just has too much. This is a great venue to reduce your collection and add that rare item. If interested in joining the fun, please contact Frank Wollenhaupt by email at fewvic303@sbcglobal.net or just give him a call at 937-475-2889.

Recent Finds



Cigarette holder, engraved Lucia. Is this 1066 stem combined with something else?

Welcome to the eBay Report, featuring Cambridge glass items that sold on eBay circa mid-February through mid-March 2022... plus a few straggler items on my Watch List that I neglected to mention in last month's report. Selling prices are rounded to the nearest dollar. If no color is mentioned, assume that the piece or part of it being discussed is crystal. If I refer to an auction as "incognito," that means that the seller did not know he or she was offering Cambridge glass, and didn't use the word "Cambridge" in the description. I am also trying to make sure I mention if a listing was a Buy It Now offering, as opposed to an auction style listing. I think it's important to distinguish between the two, as the price for an auctioned item reflects competitive bidding (or no competition, if it sells for the opening bid.)

Rose Point

A set of 8 #7966 sherries sipped away for \$272.



A #1263 flat dressing bottle with stopper poured it on for \$285 Buy It Now.



A #3500/144 Bridge Set consisting of the 3500/144 Gadroon center-handled tumbler tray holding 4 #498 4-3/8 inch 8 ounce tumblers, sold for \$300 Buy It Now.

A #299 3-toed covered candy with applied rose finial in Carmen bloomed for \$416.



Statuesque (Nude Stem) and Related Items

A single candlestick in Crown Tuscan with crystal locking bobèche and 8 prisms sold for \$275 Buy It Now. Some black flecks in the glass were noted.

The same candlestick in crystal with a Royal Blue candle socket brought a much more impressive \$705 after 35 bids.



Gold, Silver and Enamel Decorations

A #861 11 inch handled serving tray, border etched #527 covered in gold, the compartments etched with early Wildflower, was offered for \$80 but sold for an undisclosed Best Offer.



A lamp made from the #1234 12 inch vase in Carmen etched and gold encrusted Diane sold for \$255.



Etched Tableware & Stemware

A #1066 Aurora ivy ball etched Portia sold for \$23 in an incognito listing.

A #9408 or 8701 5 inch tumbler in Willow Blue etched Diane sold for \$47. Where were the rest of them? I asked. Well, my rhetorical question was answered when the seller posted four more. The set of four sold for \$201. Then I realized the seller had listed a second set of four. That grouping brought \$124.



A #388 4 inch ashtray in PeachBlo etched Gloria sold for \$51.

A #3400/68 cream & sugar etched Apple Blossom, set on a #1071 9 inch handled tray, all in PeachBlo, sold for \$55.



An Ebony 10-1/2 inch low pan-shaped bowl with flat rim etched Cleo sold for \$65 in an incognito listing. The shape reminded me of the #14 baked apple bowl, but smaller. It also looked like the #9 10 inch flat rim bulb bowl, but without the three feet. Readers – what is the correct shape number?



An unusual #1308 6 inch blown vase etched Rosalie sold for \$69 Buy It Now. The shape resembled the #3145 tumblers, but different.

A late small decanter in Smoke with the Lion etching and an original label, missing the stopper, sold for \$77.



A set of 6 #3051 4-1/2 inch cone-shaped tumblers in Light Emerald with etching #704 sold for \$85.

A #3400/38 80 ounce ball jug etched with Lotus Glass Company's Vesta pattern was offered for \$100, but sold for an undisclosed best offer. The decorating company's etching resembles Cambridge's Elaine pattern, so it's worth studying and comparing the two etchings, to make sure you know what you're looking at... or buying!



A #950 bacon & eggs dish and cover in Light Emerald etched #732 was offered for \$119, but the "listing was ended by the seller because the item is no longer available." Hmm...

A #3400/95 4-1/2 inch puff box in Forest Green (the seller called it Emerald Green) etched Apple Blossom sold for \$154.



A set of 4 #3400/55 Light Emerald cream soups etched Apple Blossom with saucers were spooned out for \$159 Buy It Now.

A #1314 footed ashtray with Gold Krystol bowl etched Diane wafted away for \$220.



A Light Emerald #623 center-handled tray with 4 #881 tumblers etched Golfers sold for \$325.

A pair of #3500/95 6 inch 2-Lite Ram's Head Candelabrum, version 1, with bobeches and prisms, both the base and prisms etched Minerva, were food for the gods at \$400. This is the rarer, earlier version, with the ram's head in the center. Later, Cambridge replaced it with the cornucopia.



Miscellaneous

An attractive 7 inch rectangular vase with curved beveled

corner panels and a spiral optic in a brilliant light green was offered by the seller as "Vintage Cambridge Glass vase Uranium Aero Optic 1929." Though the optic in it clearly wasn't Aero, the piece probably sent many collectors scurrying for their 1927-1929 catalog reprint to see whether it was at least Cambridge. Those who did check it came up empty-handed. However, someone who was undoubtedly a very satisfied collector of colored Steuben glass won it for \$52.



A #299 3-toed covered candy in Light Emerald with applied rose finial in PeachBlo sold for the opening bid of \$64.



A turtle flower frog with the domed back sold for \$69 Buy It Now. A nick to the tail was noted.

Three bidders competed for a hollow stem champagne with Achilles cutting, which sold for \$156. The seller followed up with a set of 3 more, which sold for \$465 Buy It Now.



A #522 Two-Bun Geisha figurine in Light Emerald with a small screw-on brass base, set into a what appears to me to be a Westmoreland Glass Company Lotus pattern console bowl, was offered by a seller located in Australia. The "set" sold for \$1110 U.S. dollars on a Buy It Now. The same seller offered an identical "set" in Bluebell, except that the bowl was resting on a stepped black glass base. It sold for the same Buy It Now price as the Light Emerald one.

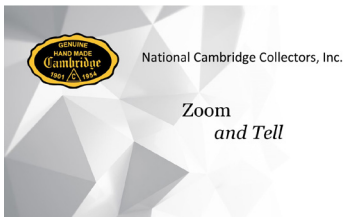


That's it for now. If you see any interesting Cambridge glass on eBay that you think I should be watching or reporting on, or if you have any other input, feel free to contact me at LAGlass@pacbell.net. I am well aware that I don't catch every interesting listing, and now that eBay no longer has a category devoted to Cambridge glass, I will especially need your help. Until next time, happy Cambridge hunting!

NCC Events

2022 NCC Convention
June 23-25, 2022

Fall Membership Meeting
Friday October 8, 2022



Contact membership@cambridgeglass.org if you don't get the monthly email with the Zoom information.

April Helio and Violet
May Rubina and Sunset

Member Benefit

Each NCC household is allowed one free 20-word classified ad in the Crystal Ball per calendar year as part of their membership. This can be a "For Sale" or "Wanted" type of classified ad. Submit your ad by email to editor@cambridgeglass.org

CLASSIFIEDS

Cambridge glass and Krome Kraft For Sale

Selling collection of Krome Kraft with Cambridge inserts, and Cambridge Glass pieces. Would like to dissolve collection of +/-300 pieces. Salt & Peppers, Cream & Sugars, Compotes, Lazy Susan, Pitchers, Decanters, trays, misc serving pieces, most colors. Please pick up while traveling this spring/summer. In Illinois. Contact Sue: sd.camp@frontier.com

Glass Shows

April 8-9, 2022
North Jersey Depression Glass Club
22nd Annual All American Glass Show & Sale
Trinity Episcopal Church Hall
55 George St.
Allendale, NJ
<https://facebook.com/northjerseydepressionglassclub/>

May 1, 2022
Big Apple Depression Glass Club
All American Glass & Pottery Show & Sale
Albertson V.F.W. Hall
155 Searingtown Rd
Albertson, NY
cupboard@optonline.net

May 6-7, 2022
Eastern National Antique Show
Annual Spring Show & Sale
Carlisle Expo Center / 100 K St.
Carlisle, PA
<https://easternnationalantiques.com/information@easternnationalantiques.com>

June 10-12, 2022
Fostoria Glass Society of America
41st Glass Show & Sale
Moundsville Center Building
901 Eight St.
Moundsville, WV. 26041
<http://www.fostoriaglass.org>

June 18-19, 2022
Tiffin Glass Collectors Club
35th Annual Artistry In American Glass Show and Sale
Tiffin Middle School
103 Shepherd Dr
Tiffin, OH
<http://tiffinglass.org>

New Members

Marilyn Keck MO

DEALER DIRECTORY

Dealer Directory - \$24 for 12-months, size limited by box (see below). Includes listing on NCC website. Electronic submissions should be emailed to: editor@cambridgeglass.org

Advertising Rates:

1/8 page \$15 1/4 page \$20
 1/2 page \$30 Full page \$50

Mailed submissions and all payments should go to PO Box 416, Cambridge, OH 43725. Deadline is 10th of preceding month. Ads must be paid in advance. Show listings are FREE; send info to PO Box or e-mail address 60 days before event.

<p style="text-align: center;">Max Miller Elegant American Glassware www.maxmillerantiques.com</p> <p>The Market Place 10910 Katy Freeway. 713-410-4780 Houston TX 77043 mmxglass@aol.com</p>	<p style="text-align: center;">ISAACS ANTIQUES (740) 826-4015</p> <p style="text-align: center;">↔ located in ↔ DealBusters Marketplace 61 S. 2nd Street Byesville, OH (740) 605-1010</p>
<p style="text-align: center;">Glen & Carolyn Robinson White Rose Antiques Specializing in Depression Era Glassware</p> <p style="text-align: center;">2454 McFarland Road York, SC 29745</p> <p>803-684-5685 gandcrobinson@aol.com whiteroseglassware.com</p>	<p style="text-align: center;">MARGARET LANE ANTIQUES</p> <p>2 E. Main St. New Concord, OH 43762 Lynn Welker (740) 705-1099</p> <p>Cambridge Glass Matching Service Hours: Mon-Fri 10-12 AM, 1-5 PM or by appointment</p>
<p style="text-align: center;">CRYSTALLINE COLORS <i>Cambridge • Fostoria • Elegant Glass</i> Booth and Showcases in the Medina Antique Mall Medina, OH (I-71, exit 218)</p> <p style="text-align: center;">Lynne R. Franks 216-661-7382</p>	<div style="border: 1px solid black; padding: 5px;"> <p style="text-align: center; background-color: #4b0082; color: white; margin: 0;">Connecting Buyers & Sellers!</p> <p style="text-align: center; margin: 0;">Tell us what you are looking for and we help find it.</p> <p style="text-align: center; background-color: #4b0082; color: white; margin: 0;">CAMBRIDGE GLASS.US</p> <p style="text-align: center; margin: 0;">P. Snyder 740-601-6018</p> <p style="text-align: center; background-color: #4b0082; color: white; margin: 0;">E-Mail and Find Your Glass!</p> <p style="text-align: center; margin: 0;">psnyder@cambridgeglass.us</p> <p style="text-align: center; margin: 0;">www.cambridgeglass.us</p> <p style="font-size: small; margin: 0;">When you are searching for Cambridge glass, email your request and it is emailed to all members and dealers. P. Snyder, 1500 Edgewood Dr., Circleville, Ohio 43113</p> </div>
<p style="text-align: center;">CRYSTAL LADY 1817 Vinton St. Omaha, NE 68108 Bill, Joann and Marcie Hagerty 402-699-0422</p> <p>Specializing in Elegant Glass & Collectibles www.crystalladyantiques.com</p>	<div style="border: 2px solid red; padding: 10px; text-align: center;"> <p style="font-size: large; margin: 0;">Our House Antiques</p> <p style="margin: 0;">Linda and David Adams Las Vegas, Nevada 702-302-8282</p> <p style="font-size: small; margin: 0;"><i>Shows and Mail Order only</i></p> <p style="font-size: small; margin: 0;">email: David@OurHouseAntiques.com</p> <p style="font-size: small; margin: 0;">www.OurHouseAntiques.com</p> </div>



National Cambridge Collectors, Inc.
PO Box 416
Cambridge OH 43725
email: editor@cambridgeglass.org
website: www.cambridgeglass.org



Friends of Cambridge – Annual Fund

NCC exists through member giving using an Annual Fund system to raise operating funds and to ensure the preservation of Cambridge glass for future enthusiasts. The Annual Fund uses a common member "renewal" date and NCC sends out Annual Fund materials to everyone once a year. There are no monthly reminders or monthly renewal dates. The Annual Fund is NCC's primary means of support and all Annual Fund gift recognition levels are per household and include membership for all adults within the household. Additionally, each household will receive a subscription to the Crystal Ball newsletter, unlimited admissions to the museum, and rights to vote in elections for the Board of Directors. Multiple households at the same address are welcomed. NCC is a 501(c)(3) organization and Annual Fund gifts are allowed as a tax deduction under Section 170 of the Internal Revenue Code.

Levels of Membership

Patron	\$35
Benefactor - Century	\$100
Benefactor - Mardi Gras	\$200
Benefactor - Japonica	\$500
President's Circle	\$1,000

President's Circle includes Convention registration for two members in the household and one copy of any new NCC publications.

The National Museum of Cambridge Glass

Located at 136 S. 9th Street
in downtown Cambridge
Wed-Sat 9-4
Sunday 12-4

