



Cambridge Crystal Ball

Published by the National Cambridge Collectors, Inc. as a resource which informs, invites and inspires people to encourage the continued preservation of the glass produced by the Cambridge Glass Company of Cambridge, Ohio for future generations.

Issue No. 554

ISSN 2474-5987

January 2022

2022: the UN International Year of Glass

[editor's note: this content is taken from <https://www.iyog2022.org>]

“The International Commission on Glass (ICG), along with the Community of Glass Associations (CGA) and ICOM-Glass recently applied for a United Nations International Year of Glass of 2022 and the UN General Council meeting on 18th May 2021 gave its formal approval!

The Year will celebrate the essential role glass has and will continue to have in Society. The vision of a United Nations International Year of Glass (IYoG2022) is to celebrate the past, present, and future of this unique material. Specifically, to:

- Demonstrate the role of glass in advancing civilization throughout recorded history.
- Organize international glass science and art festivals, with workshops to excite and inform the public of this rich history, and highlight links between glass, art and culture.
- Stimulate research on glass amongst organizations in education, industry, research and the public domain, including museums.
- Build worldwide alliances focused on science and engineering for young people.”

Does this relate to NCC? Absolutely!. The mission of the National Cambridge Collectors, Inc. (NCC) as a non-profit Ohio organization is to inform, invite and inspire people to encourage the continued preservation of, and education about, the handmade glassware produced by The Cambridge Glass Company for future generations.

Let's all work together towards this mission.



What's Inside

2022: the UN International Year of Glass	1
President's Message	2
2021 - A Successful Year All Around!	4
State of Ohio CARES Grant Awarded	5
2022 Benefit Auction Information	8
2022 Benefit Auction Listing	9
Zoom & Tell November: Satin Treatments.	18
Zoom & Tell December: Ebony	19
eBay Report	20
New Members.	22

National Cambridge Collectors, Inc.

PO Box 416 Cambridge, OH 43725-0416

Board of Directors

	2022	
Julie Buffenbarger	David Rankin	Frank Wollenhaupt
	2023	
Nancy Misel	Lindy Thaxton	Lynn Welker
	2024	
Cindy Arent	Larry Everett	Mike Strebler
	2025	
Ken Filippini	Freeman Moore	Christine Smith

Officers

President	Freeman Moore
Vice-President	Ken Filippini
Secretary	Nancy Misel
Treasurer	Mike Strebler
Sergeant-at-Arms	Larry Everett

Committees

Endowment	Doug Ingraham
Finance	Mike Strebler
Property	Larry Everett
Strategic Planning	Mike Strebler

Member Services

Vice President

Member Relations
Convention
Member Social Media
Glass Dash
Glass Show
Study Groups
Webmaster

Freeman Moore
Freeman Moore, Membership Database
Larry & Susan Everett
David Ray
Larry Everett & Frank Wollenhaupt
David Ray, Mike Strebler, Jack Thompson
Jeannie Moore, Study Group Coordinator
David Adams

Development

Vice President

Campaigns

Events

Projects
Publicity

Julie Buffenbarger
Ken & Jane Filippini, Annual Fund Directors
Larry Everett, Director of the Heritage Society
Bev & Will Acord,
Lynn Welker, Auction Managers
Susan Everett & Frank Wollenhaupt, Jewelry
Convention: Jonathan Fuhrman

Education

Vice President

Crystal Ball
Digital Archivist
Publications
Media Productions
Research

Jack Thompson
Freeman Moore, Editor
Dave Rankin
Larry Everett, Director of Publications
Dave Rankin, Director of Media Productions
Dave Rankin, Director

Museum

Vice President

Public Operations
Facilities & Grounds

Inventory Management
Collections
Museum Gift Shop

Archivist
Museum Social Media
Community Relations

Cindy Arent
Lindy Thaxton, Director of Public Operations
Cindy Arent,
Joe Miller,
Lindy Thaxton
Lindy Thaxton, Director of Inventory Management
Lynn Welker, Director of Collections
Cindy Arent, Gift Shop Manager
Lynn Welker, Gift Shop Manager
Mark Nye, Director of Archives
Cindy Arent, Director
Cindy Arent

Administration

Vice President

Accounting & Finance

Larry Everett
Lisa Neilson, Office Manager

MEMBERSHIP QUESTIONS?

Please send address changes to:
Membership - NCC
PO Box 416
Cambridge, OH 43725-0416
or by e-mail to:
membership@cambridgeglass.org



CONTACT US

NCC Business Manager
Phone: 740 432-4245

businessmanager@cambridgeglass.org



Freeman Moore, President

e-mail: president@cambridgeglass.org

Nancy Misel, Secretary

e-mail: secretary@cambridgeglass.org

Heritage Society

Ensuring the preservation mission of the NCC through planned giving and estate bequests.

Members of The Heritage Society are those who have included the NCC in their wills or estate plans, thus providing the organization with a secure future.

The mission of The Heritage Society is to foster smart estate planning and to assure that NCC is not forgotten as an important beneficiary. Any pledge is meaningful and appreciated.

All Cambridge collectors - both current and future - will benefit from, and be grateful for your support.

Let us know how we can help with your future plans.

Museum:

National Museum of Cambridge Glass



Like us on Facebook

Member: Cambridge Glass/National Cambridge Collectors

NCC Website: www.CambridgeGlass.org

NCC Museum Website: www.cambridgeglassmuseum.org

Miami Valley Study Group Website: www.mvsg.org



PRESIDENT'S MESSAGE

2022 *Here We Come!*

Ah, a new year, and a whole new set of possibilities. Like everyone else, I agree that the past two years are best put behind us and we can plan for some degree of normalcy in 2022. As an organization, we had our challenges in 2021 and some bright spots.

While we didn't have a physical convention in June, we did have three evenings of online activities, including our annual meeting. We finally held the postponed March 2020 auction in October 2021. The monthly Zoom & Tell sessions allows members to show examples of Cambridge glass following a monthly color theme. Make sure to read Cindy Arent's museum article and congratulate the entire museum team for having an outstanding year.

Thank you to all the volunteers who help make sure this organization operates and will continue to exist in the future. We're in the process of developing a listing of volunteer positions and will share that with you soon. In our remote, yet electronically connected world, there will be opportunities for you to help out, even if you don't live close to Ohio.

Thank you to the auction co-chairs of Bev & Will Acord and Lynn Welker for coordinating the March 2022 Benefit Auction. The auction listing is printed in this issue, so make sure to review it. If you're planning to attend in person, great. If not, make sure to get your absentee bids submitted. Thanks also to David Rankin and Larry Everett for getting everything photographed and posted online. Lots of good items to look at.

Bev Acord will be including more information next month about the auction process; including pictures highlighting some of the auction pieces.

At our January meeting, the board of directors will be reviewing and approving our budget for 2022. The budget incorporates what we have learned from prior

years and what we think we will do this coming year. The budget provides the financial direction for some of the activities that need to be done next year as well as working on new projects that are aligned with our mission and future goals.

Beyond looking at one year, organizations have strategic plans or 5-year plans. Strategic plans are all about *why* things need to happen. It's big picture, long-term thinking. This is your organization – what will be important to you in 5-10-15 years?

What's coming?

Over the next couple of months, our nominating committee will be soliciting candidates to run for the board of directors. We need your ideas and suggestions. A fresh set of ideas is always appreciated. Contact David Ray westervilleesh@hotmail.com if you are interested, or want to nominate someone else.

What's on your Cambridge "wish list" for this year and beyond, and how can we help?

Have a happy and healthy new year!

Sincerely,

Freeman Moore
president@cambridgeglass.org



2021 - A Successful Year All Around!

By Cindy Arent

As we wrap up 2021, we look back on the many unforgettable experiences we had throughout the year; meeting new visitors, greeting old friends, meeting NCC members at the museum, VIPs, and motorcoach groups.

During the Holiday Season (November and December), the National Museum of Cambridge Glass was open on Friday and Saturday each week and also during the week for motorcoach groups. On Thanksgiving weekend, the 20th Annual Museum Holiday Open House was a two-day event. Both days were busy, but Saturday was the busiest! It was difficult to keep up with the steady stream of visitors throughout the Open House weekend. Everyone was very complimentary.

The new Museum Dining Room, “*A Christmas Brunch with Cambridge*” was in place for the holiday season with great reviews. The inspiration for the display came from the donation of a Light Emerald double egg cup etched Apple Blossom from Ann Stotzer. The four place settings are; Willow Blue, Gold Krystol, Peach Blo and Light Emerald. We do not have the double egg cup in Peach Blo, so if you ever happen to see one, please let me know.



The new Museum Dining Room display features the No. 748 – 5 oz. Double Egg Cups in Light Emerald, Gold Krystol and Willow Blue.

The Museum also participated in Small Business Saturday sponsored by Cambridge Main Street. We were given canvas bags with the Shop Small logo to pack the many pieces of glass purchased in the gift shop throughout the day.

Two fundraisers, totally funded by NCC members, continue to grow each year. They are jewelry and ornaments made from damaged pieces of Cambridge Glass. Susan Everett is now making the Cambridge jewelry and Lindy Thaxton and myself are making the Cambridge ornaments. Frank Wollenhaupt has also been grinding some of the ornaments. All of the supplies are purchased by the makers so these successful projects cost NCC nothing. As of November 26, we have sold \$3,590 in Cambridge Ornaments and \$710 in jewelry. We have shipped phone orders all over the country.

I can't say enough about our Museum Volunteers and Docents during the motorcoach season. They went above and beyond to provide the best possible experience for all of our guests. We received many compliments from our guests and the Group Tour Directors at the conclusion of each tour. The director of a tour company from Virginia told us that she had been to many, many glass museums with groups, including the Corning Glass Museum. However, her visit to the National Museum of Cambridge Glass was the best ever. These are the positive comments that make all our hard work worthwhile and keep us going day after day and year after year.

Wishing you a Safe, Healthy & Happy New Year!



There have been many positive comments about the new Dining Room. Most people say how they would love to be entertained in the room.

State of Ohio CARES Public Humanities Relief Grant

Awarded

By Cindy Arent

In early December, the National Cambridge Collectors, Inc. received the largest grant in our history. We were awarded \$25,000 by the State of Ohio CARES Public Relief Grant. This is funded by the Coronavirus Aid, Relief and Economic Security (CARES) Act approved by Congress in March 2021.

During the summer, a SHARP (Sustaining the Humanities through the American Rescue Plan) grant was submitted to Ohio Humanities for \$20,000 for the second round of their Care's funding. I received a call in September asking if we would consider moving to a new stream of funding through the State. We would have received \$15,000 through the SHARP Grant, but the chances were good we could receive more if we submitted a new grant to the State. We decided to go for it and the extra effort paid off with a \$25,000 award!

I'll keep you informed as we work on projects supported by this grant. ■



City of Cambridge Mayor Tom Orr surprised us by stopping in during one of our motorcoach groups. He spoke to the visitors and made them feel special. We appreciate everything he does for the community!



NCC members Jerry Jones, Ann Jones and Lindy Thaxton prepare for the next bus group in the Museum's Education Center. Guests enjoy learning about the Cambridge Arms line and then making their own arrangement.



NCC member Reggie Gerko enjoys teaching the etching process because her Mother worked in the Etching Department at The Cambridge Glass Company!



Museum volunteers Sharon Miller and Jeff Ross pretend to be clocking in to work at the glasshouse/museum. We appreciate what all our docents and volunteers do year-round!

During the Holiday Season, guests are greeted as they enter the Museum. (L-R): Anna Marie Pavlov, Sharon Bachna, Sandi Rohrbough, Sharon Miller and Cindy Arent.



Museum volunteer Diana McMahon (Right) loves sharing stories as she guides visitors through the display area. Diana had over 20 ancestors who worked at The Cambridge Glass Company!



Everyone enjoys learning about the etching process! Volunteer Sharon Bachna is shown demonstrating the process. Additional volunteers who taught in the etching room were Reggie Gerko, Jeff Ross, Diana McMahon, Lindy Thaxton and Sandi Rohrbough.

NCC member Joey Pirl arrived at the museum to help with the three motorcoach groups we had on December 3rd. Lindy Thaxton and Joey are getting the reception desk ready for the next group.



NCC members Nate and Jill Koman and family have been coming to the Museum's Open House during Thanksgiving weekend since 2017. Every year we take a new family photo dressed as glassworkers. Looking good again this year!

National Cambridge Collectors, Inc.

2022 Benefit Auction

Saturday, March 19, 2022

Pritchard Laughlin Civic Center

7033 John Glenn Hwy • Cambridge, Ohio

INFORMATION

Preview at 8:30 a.m. Auction starts at 9:30 a.m.

Craig Connelly, Auctioneer Admission: \$2.00

All glass in the auction is guaranteed to be Cambridge. The Auction Managers have checked all glass carefully for verification and damage. Any piece purchased should be examined immediately by the purchaser, and returned within five items if not as represented. All damages are indicated in this catalog; last minute changes or addenda will be announced by the Auction Managers immediately prior to the auction. If no color is indicated herein, the item is crystal. There are no reserves and no buyer's premiums are charged. Photographs of auction attendees and activities may be taken for NCC promotional purposes.

TERMS: Payment is expected in cash the day of the sale; checks will be accepted with proper identification.

CATALOG: Lots will be sold in the order printed herein. A number in parenthesis () at the end of a listing indicates the number of that item available for sale. The auctioneer will announce whether such multiples are being sold individually or as a lot. If multiple items are being sold individually, a winning bidder may take any number available. If the catalog indicates "set," "pair" or a similar term, the lot is sold as such.

ABSENTEE BIDS: Anyone wishing to bid absentee, may do so by mailing their bids to the Auction Committee at the address below. All bids must be received by the end of Thursday prior to the auction to be eligible, so please allow enough time for the postal service to do its thing. **They must contain all the following information:**

- List showing the lots desired and the maximum bid for each lot.
- Valid Credit Card, VISA & MasterCard accepted. The following is required for a proper credit card transaction:
 1. Exact name as it appears on the card
 2. Expiration date
 3. 3-Digit Security Code on the back
 4. Exact address credit card statement is billed to
 5. Phone number
- Address where winning lot(s) are to be shipped to.

Bids will be executed secretly and a winning bidder will pay only the final auction price. If there are multiple absentee bids for the same lot, bidding will commence on the floor at the second highest bid, effectively shutting out all by the highest absentee bidder.

Shipping: Items can be shipped to street addresses only. WE CANNOT SHIP TO P.O. BOXES. If you are the successful bidder, your credit card will be charged as follows: **Final auction price + 5% transaction fee + cost of shipping.**

MAILING ADDRESS: All absentee bids must be mailed to:

NCC Auction Managers

P.O. Box 416

Cambridge, OH 43725

**BIDS MUST BE RECEIVED BY
THURSDAY, MARCH 17, 2022 TO BE ELIGIBLE**

QUARTERLY MEETING: The Quarterly Meeting of the NCC will be held on Friday, March 18 at 7:30 p.m. A preview of the auction glass will be presented. Show & Tell glass is also welcome at the meeting. All are welcome!

For additional copies of the catalog listing as well as detailed information on the entire auction, please visit the website at <http://www.cambridgeglass.org> under **Annual Auction.**

Additional copies of this catalog are included with admission to the auction.

2022 NCC Benefit Auction Listing

1	_____	110 Crystal 5" 2 lite Mt. Vernon Candlestick
2	_____	3126 Amethyst 7 oz. Tall Sherbets (2)
3	_____	3126 Amethyst 10 oz. Footed Tumblers (2)
4	_____	SS47 Crown Tuscan 9½" Seashell Cornucopia vase
5	_____	SS46 Crown Tuscan 7 ½ " Seashell flower holder
6	_____	3900/66 Crystal 13" 4 Footed Crimped Bowl Etched Rose Point
7	_____	A56 Crystal 3 oz Cocktail (6)
8	_____	3550/165 Crystal Caprice Alpine 6" 3 Footed Candy Box & Cover
9	_____	3500/70 Amethyst 7½" 4 compartment relish with farberware base
10	_____	1402/50 Amber Tally Ho Tankard Jug with (6) Handled Steins, Amber, Crystal, Royal Blue, Forest Green, Amethyst and Gold Krystol (minor chip on Rim)
11	_____	1090 Willow Blue Decagon 7" Tall Comport
12	_____	1321 Amber Decanter with (6) 7966 2 oz. Sherry on 1084-13" Tray
13	_____	Amber Chrome Duchess Filigree Decanter with (6) Wines on Farber Tray (Tray Scratched)
14	_____	3400/851 Amber Decagon Ice Pail with 8 Tumblers on 1084 13" Tray (tray signed)
15	_____	1322 Amber 26 oz. Decanters (2) with 4 Muddlers, (2) Old Fashions, (5) 5 oz. Tumblers (4) shot glasses on 1084 13" Tray (tray signed)
16	_____	840 Peach-Blo 15" Decagon Oval console bowl etched Cleo (signed) UNUSUAL
17	_____	3400/38 Amber 80 oz. Ball Jug (Scratched)
18	_____	Rubina 12" Punch Bowl, Wide Optic (No Green or Blue)
19	_____	1636 Crystal 4½" Peg Blue Jay
20	_____	441 Lite-Emerald 10½" Diameter Comport, Belled, with Gold Band Etching
21	_____	437 Lite-Emerald 9½" Candlestick, Gold Band (Pair) with Gold Band Etching
22	_____	500/25 Rubina 10" Honeycomb Optic Bowl (Signed) Good Color
23	_____	438 Rubina 8½" Candlestick (Pair)
24	_____	3400/158 Willow Blue Cocktail Shaker with unidentified Floral Cutting
25	_____	3011/2 Carmen Statuesque Table Goblet
26	_____	3011/9 Amethyst/CT Statuesque 3 oz. Cocktail (Label)
27	_____	3035 Gold Krystol 2½ oz. Wine Etched Gloria
28	_____	3121 Heatherbloom 10 oz. Goblet, Crystal stem & foot
29	_____	3075 Lite Emerald 2½ oz. Wine Imperial Hunt Scene etch
30	_____	1066 Royal Blue 2 oz. Sherry, Crystal stem & foot
31	_____	3130 Amber 2½ oz. Footed Tumbler Etched Gloria
32	_____	3011/12 Royal Blue Statuesque 2½ oz. Wine
33	_____	3122 Peach-Blo 12 oz. Footed Tumbler, Etched Gloria, Crystal stem & foot
34	_____	3122 Royal Blue 2½ oz. Wine, Crystal stem & foot
35	_____	3121 Crystal 2½ oz. Wine engraved Achilles, also cut on foot
36	_____	1402/12 Royal Blue Tally-Ho 2½ oz. Wine
37	_____	3400/38 Heatherbloom 12 oz. Tumbler Etched Diane
38	_____	3600/156/69 Crystal Oyster Plate and Sauce Cup (2 sets)
39	_____	390 Crystal 6" Ash Tray, Etched Diane (Signed)
40	_____	1008 Ebony 12" Everglade vase, Satin background), HARD TO FIND
41	_____	3104 Crystal 5 oz. Tall Hoch, not Cambridge cutting(?) (quantity 2)
42	_____	432 Helio 8½" Ram's Head Bowl, Gold Trim
43	_____	2760 Crystal 7" Basket, Arch Foot (Signed)
44	_____	1577 Crystal 6" 5-light Caprice Candlestick
45	_____	36 Peach-blo Centennial 7" 3-compartment Candy Box (Martha Washington)
46	_____	3500/16 Crystal 11" Footed bowl, RC, Croesus
47	_____	1402/86 Amber 4" Tally-Ho Ash Tray
48	_____	2932 Peach-Blo 12" Flat rim bowl, Gold Encrusted E715 Willow (Scratches)

49	_____	882 Ebony Tobacco Humidor with Moistener, Gold Rings
50	_____	3900/166 Crystal Corinth 14" Torte Plate, Sorority Monogram, (Label)
51	_____	1402 Royal Blue Tally-Ho 12" Flared Bowl, Platinum Trim (some Scratches)
52	_____	2631 Crystal Marjorie Nearcut Ftd. Vase
53	_____	2631 Crystal Marjorie Nearcut Salt and Pepper, signed (1 stained) (Pair)
54	_____	2651 Crystal Feather Nearcut Goblet, (worn gold)
55	_____	P430 Crystal 12" Bowl, Cutting process sample and matching completed Bowl all labels and tags
56	_____	94 Ivory 5½" x 7½" Sweet Pea Vase
57	_____	86 Primrose 8" Footed Vase
58	_____	14 Crystal 9" Frosted Bowl, (Moonstone Finish) Comport
59	_____	148 Lt Emerald 5" Wetherford Tall Footed Tapered Jelly Comport & Cover
60	_____	278 Crystal 11" Ftd. Vase, Talisman Rose
61	_____	1137 crystal 5½" Blue Jay Flower Frog
62	_____	3900/72 Crystal 6" 2-Light Candlestick, Etched Candlelight (Pair)
63	_____	3500 Royal Blue 10oz. Ftd. Tumbler (2)
64	_____	3500 Crystal 3oz. Ftd. Tumbler, RC Adonis (6)
65	_____	1402/139 Amethyst 10" Tally Ho Hat
66	_____	236 Night Blue 8" Candlestick (Pair) UNUSUAL
67	_____	1050 Crystal 4½" Swan Candlestick (Type 3) (Pair)
68	_____	1043 Crown Tuscan 8½" Swan (Type 3), Charleton Gardenia, Original Charleton Label
69	_____	1121 Lite-Emerald Ice Bucket, Etched 722, (Signed)
70	_____	1070 Amethyst 14 oz. Handled Pinched Mug with Crystal handle, ground top and bottom
71	_____	106 Amber 66 oz. Covered Jug, (6) #1630 12 oz. Tumblers with Gold Encrusted Border Etch 619 (Set)
72	_____	92 Primrose 12" Stick Vase
73	_____	1040 Ebony 3" Swan, Style I (marked)
74	_____	1041 Ebony 4½" Swan Style I (Chip under Base) (Signed)
75	_____	1042 Ebony 6½" Swan, Style I (Signed)
76	_____	1043 Ebony 8½" Swan, Style I (Signed)
77	_____	1044 Ebony 10" Swan, Style I (Tiny Chip on Tail) (Signed)
78	_____	1045 Ebony 13" Swan, Style I (Chip on Fin) (Signed)
79	_____	1283 Crystal 8" Vase Etched Elaine
80	_____	3400/79 Crystal 6 oz. Tall Oil Etched Diane
81	_____	107 Lite-Emerald 76 oz. Covered Jug with #518 Tulip Etch, Scratched
82	_____	3077 Amber 1 oz. Cordial, Etched Cleo
83	_____	7966 Crystal 1 oz. Cordial, Etched Rose Point
84	_____	3011/14 Amber 1 oz. Statuesque Cordial
85	_____	3500 Crystal 1 oz. Cordial Gold Encrusted Rose Point Etch
86	_____	1402/100 Ritz Blue 1 oz. Cordial Gold D/1007/8 (Trim Wear)
87	_____	3130 Lite-Emerald 1oz. Cordial Etched Apple Blossom
88	_____	3106 Crystal 1 oz. Cordial Etched Rose Point
89	_____	1400 Mocha Mt. Washington 1 oz. Cordial
90	_____	3126 Royal Blue 1 oz. Cordial
91	_____	3775 Crystal 1 oz. Cordial, Etched Chantilly
92	_____	7966 Amethyst 1 oz. Cordial
93	_____	3105 Royal Blue Pressed Rose Point Cocktail
94	_____	3126 Amethyst 1 oz. Cordial
95	_____	3104 Carmen 7 oz. Champagne
96	_____	883 Peach-Blo-Crystal Ashtrays, Hunt (2) (CHOICE)
97	_____	811 Willow Blue Decagon 2½" footed Nut cup
98	_____	102 Lite-Emerald Stratford 3" handled Urn Salt, signed
99	_____	18 Crystal Everglade 15" Swan Bowl
100	_____	31 Crystal Everglade 16" Tulip Plate

101	_____	Crystal Cambridge Doorknobs, original fittings
102	_____	705 Goldenrod/Golden Showers Eyewash Cup or Dappen's Glass
103	_____	2674 Crystal Bennett Lemon Extractor, Large Chip
104	_____	1917/86 Crystal Candy Jar P.E. #5 plated,#408 Etched on Border Etch #619 Wedgewood
105	_____	1917/88 Mulberry ½ Pound lb Candy Jar & Cover
106	_____	1402/37 Carmen 2 oz. Tumbler with Handle (3)
107	_____	1402/37 Crystal 5" Candlestick
108	_____	3400/52 Crystal 5½" Butter & Cover Square Knob Etched #752 Diane, Scratches in Bottom
109	_____	609 Peach Blo Salad Spoon & Fork Version #2
110	_____	56 Crystal Stratford 7" Squat Vase, Plain Edge
111	_____	1636 Crystal 4½" Peg Blue Jay
112	_____	3400/107 Amethyst 14 oz. Mug (5)
113	_____	7966 Crystal 1 oz. Cordial, Talsman Rose
114	_____	Adv. 1939-40 Calendar/Datebook/Address Book (Blank)
115	_____	3500/41 Crystal 8" Footed Urn Vase, Etched "Elaine", Gold Encrusted, No Lid
116	_____	319 Heatherbloom 9 oz. Georgian Tumbler
117	_____	3500/62 Crown Tuscan 7½" 2 handled, 4 Compartment Relish (UNUSUAL)
118	_____	317 Amber Jenny Lind 5" Rose Bowl, Original Label
119	_____	Crystal Dog Bottle & Tumbler, 22 oz. (Minor chips on both)
120	_____	130 Topaz Individual Ashtray
121	_____	Carmen Hat Ash Tray
122	_____	687 Goldenrod/Golden Showers Candlesticks (Pair)
123	_____	1239 Amethyst 14" Vase Keyhole Stem
124	_____	W115 Milk Everglade 16" Tulip Plate
125	_____	3400/10 Crystal 11" Keyhole Hld. Sandwich Tray, Etched Apple Blossom
126	_____	1119 Crystal Eagle Bookends (pair)
127	_____	2766 1916 Emerald Near Cut Thistle Tall Jug, Gold Décor , some Trim wear on the side
128	_____	1268 Crystal 2-Lite Candelabrum, Raised Lip for Hurricanes (4 total), no bobeches or hurricanes
129	_____	1603 Crystal Single Light Keyhole Candelabrum, Raised Lip for Hurricanes (4 total), no bobeches or hurricanes
130	_____	1358/8 Crystal Epergne (#1437 arm, #2355 vases, #19 bobeches)
131	_____	676 Lite Emerald 11 1/2" Bowl Etched #732, Green Enamel Encrusted, Signed
132	_____	239 Amber 8 1/4" Caprice Vase
133	_____	2800 Mulberry Community Fan Vase UNUSUAL
134	_____	W104 Milk 9" Seashell Comport
135	_____	532 Ebony 6" Tall Comport, Gold Decoration, Charleton Roses
136	_____	2800/234 Mulberry Community Wash Basin RARE
137	_____	W54 Milk 32 oz. Jug
138	_____	W132 Milk Martha Washington 8½" Fan Vase
139	_____	680 Amber Dresser Compact with Frosted Lid
140	_____	2357 Aurora 8" Optic Paste Mold Vase
141	_____	18 Amber Mount Vernon 7 oz. Toilet Bottle
142	_____	1595 Auroa 8" Ring Candlestick (Pair)
143	_____	54 & 73 Crystal Arcadia 10 1/2" Bowl & 6" 2-Lite Candlesticks (pair), Set
144	_____	1956/1 Smoke 10" Ash Trays (pair), one has a label
145	_____	SS30 Crown Tuscan 9" 4-Toed 3-Compt. Relish
146	_____	518 Peach-Blo 8 1/2" Draped Lady
147	_____	1140 Peach-Blo Everglade Springtime 15" Bowl, Swan design
148	_____	642 Peach-Blo Ash Well, Stained
149	_____	3011 Royal Blue Statuesque 7" Tall Cupped Comport
150	_____	3400/14 Gold Krystal 7" Tall Comport Etched Apple Blossom
151	_____	1070 Carmen 36 oz. Pinch Decanter
152	_____	13 Amber 13" Everglade Rolled Edge Bowl

153	_____	1 Amber Keg on Ebony Log Holder & Tray, (6) 2 oz. Barrel glasses (Set)
154	_____	Azurite Saratoga Hat, 1922
155	_____	150 Ebony Cambridge Square 6" Ashtrays, Gold Birds (2)
156	_____	2560 Opal Hatchet
157	_____	1211 Crystal Everglade 2-Lite Candlestick (pair)
158	_____	Ebony Boudoir Lamp, original fitting, Gold Trim Wear, Paper Shades (Pair)
159	_____	1210 Crystal Everglade 1-Lite 2 pc. Vase (Pair)
160	_____	Green Opalescent Stratford 2 handled Urn Salt (Rare)
161	_____	647 Crystal 6" 2-lite Candlestick (round base) Rock Crystal Engraving (pair)
162	_____	1491 Crystal 5½" Twin Salad Dressing Bowl, Sterling Silver Base, Unidentified Crystal Engraving
163	_____	3109 Crystal 3 oz. Wine E401 Old Fashion Grape, Optic (11)
164	_____	3112 Crystal Tall Sherbet Etched Ye Old Ivy (2)
165	_____	7858 Crystal 9 oz. Goblet Etched Martha (5)
166	_____	1402/77/78 Crystal/Carmen 13" Footed Tally-Ho Punch Bowl (Crystal) & (12) 6 oz. Tally-Ho Punch Mugs (Carmen) Set
167	_____	W95 Milk 4½" Swan - Type 3
168	_____	2630 1916 Royal Blue Toy Tea Set - No Lid on Sugar, small chips on both
169	_____	1090 Crystal 7" Tall Compote Etched #715 Willow
170	_____	1256 Crystal/Satin Finish 11" Everglade oval bowl- Scallop Edge, edge chip
171	_____	1402/100 Crystal Tall Sherbets D1007-8 Gold Overlay (6)
172	_____	3000 Crystal 5" square comport cut #2079, foot chip
173	_____	3121 Crystal Bell, Etched Rose Point
174	_____	P500 Crystal 6½" 1 light Candlestick, Etched Rose Point
175	_____	P253 Crystal Individual Creamer and Sugar Etched Rose Point
176	_____	3400 Crystal Rose Point #63 9½" Dinner (4), #62 8½" Plates (3), #60 6" Plates (scratches) (Lot)
177	_____	3121 Crystal Rose Point Sample Goblet, Black Wax etching process, (crack)
178	_____	3400/6 Crystal 11½" Cheese Tray, Gold Encrusted Rose Point
179	_____	147 Crystal 8 oz. Marmalade jar with lid Etched Rose Point.
180	_____	3121 Crystal 10 oz. Water Goblet Etched Rose Point (8)
181	_____	3400/52 Crystal 7" Covered Butter Etched Rose Point
182	_____	3400/11 Crystal 3 pc. Mayonnaise Set Etched Rose Point
183	_____	3400/1338 Crystal 3 Tier Candlestick Etched Rose Point (Pair)
184	_____	1349 Crystal 12" 4 Footed Bowl Crimped Flared Edge Etched Rose Point
185	_____	1300 Crystal 8" Vase Etched Rose Point (2)
186	_____	7966 Crystal 1 oz. cordial, Rose Point (quantity 2)
187	_____	4 pc. Game Set (Club, Diamond, Heart, Spade)
188	_____	3500/41 Crystal 10" Covered Urn, Valencia
189	_____	3500/27 Crystal 8" Square Rams Head Bowl, Valencia
190	_____	3011/7 Heatherbloom 4½ oz. Statuesque Claret
191	_____	1123 Crystal Dresden Lady Figurine, Satin Highlighted, Cambridge Label
192	_____	842 Amethyst 12" Decagon Bowl, (Signed)
193	_____	3011/29 Crystal Statuesque 4" Mint Dish
194	_____	3011/29 Amber Statuesque 4" Mint Dish
195	_____	3450 Forest Green 84oz. Nautilus Pitcher (Scratches)
196	_____	1044 Crystal 10½" Swan (Type 3)
197	_____	3795 Crystal Allegro 3½ oz. Wine, Etched Paisley, Label
198	_____	3060 Crystal 6 oz. Sherbet, White Rain, Cambridge Label
199	_____	3011/9 Amber 3 oz. Statuesque Cocktail with Crystal Satin Foot & Stem
200	_____	3011/9 Forest Green Statuesque 3 oz. Cocktail with Crown Tuscan Foot & Stem
201	_____	1311 Royal Blue 4" Footed Ash Tray with Crystal Stem & Foot
202	_____	3011 Emerald Statuesque Ash Tray, Crystal Stem & Foot
203	_____	1302 Crown Tuscan 9" Footed Globe Vase, Keyhole stem, D/1001 Gold Encrusted Portia, Black Stamp Crown Tuscan Mark

204	_____	1299 Crown Tuscan 11" Vase D/1012 Gold Encrusted Diane, Black Stamp Crown Tuscan Mark
205	_____	1044 Lite-Emerald 10" Swan, Style I, (Signed)
206	_____	3500/41 Amethyst 10" Covered Urn or Candy Jar
207	_____	Ivory Wetherford 8" Bowl, Fruit Décor
208	_____	388 Ebony 4" Ash Tray, Sterling Terrier Décor
209	_____	445 Primrose Mayo Ladle, Gold Trim
210	_____	500/57 Rubina 9" Honeycomb Comport
211	_____	1958 Price List
212	_____	1301 Crown Tuscan 10" Footed Vase Gold Encrusted Portia (Pair) Mint Condition
213	_____	2760 Crystal Archfoot/Daisy Large 22" Nearcut Lamp, Satin Finish in Part of Pattern
214	_____	3500 Carmen 7 oz. Low Sherbet (6)
215	_____	3500 Carmen 3 oz. Cocktail (8)
216	_____	3500 Carmen 7 oz. Tall Sherbet (9)
217	_____	3500 Carmen 10 oz. Goblet (4)
218	_____	52 Carmen Mt. Vernon 40 oz. Decanter and (6) #22 3 oz. Footed Tumblers (Set)
219	_____	3011 Carmen Statuesque Cigarette Box
220	_____	3011 Carmen Statuesque 4½ oz. Clarets (2)
221	_____	3011 Carmen Statuesque 3 oz. Cocktail (4)
222	_____	3011 Carmen Statuesque Comport, Flared
223	_____	Opal Red Riding Hood Childs Punch Cups (6)
224	_____	623/8701 Peach-Blo 5 pc. Bridge Set, Etched Florentine, Gold Trim
225	_____	513 Peach-Blo Satin 13" Draped Lady Flower Frog
226	_____	3500/42 Crown Tuscan 12" Covered Urn Lamp
227	_____	3400/152 Amber 76oz. Doulton Jug (High Handle), Slight Scratches
228	_____	3011/5 Carmen Statuesque 6oz. Hoch
229	_____	119 Rubina 7" x 12" Handled Basket, average color
230	_____	91 Jade 10" Stick Vase
231	_____	3400/144 Amber Cigarette with Ashtray Foot
232	_____	272 Ebony 10" Vase, #743 Hanging Hearts (gold trim) (Original Label)
233	_____	Crystal 8 oz. Tumbler, Satin, Enameled Wheeling Commandery
234	_____	W87 Milk 10" Covered Urn or Candy Jar
235	_____	1251 Ebony/Satin Finish 8" Everglade Springtime Daffodil Vase, Label Remnant
236	_____	21 Forest Green 7½" Everglade Daffodil Vase
237	_____	432 Lite-Emerald 8½" Ramshead Bowl (Wedgewood style)
238	_____	432 Ivory 8½" Ramshead Bowl (Wedgewood style)
239	_____	65 Ivory 9½" Doric Column Candlesticks (Pair)
240	_____	19 Willow Blue 12" Everglade Oval Bowl
241	_____	3 Willow Blue 6" Candelabrum (Pair)
242	_____	3797/26 Crystal Cambridge Square 11½" Sandwich Plate
243	_____	Azurite Electric Perfume Lamp, Metal Base, Azurite Shade
244	_____	3011/61 Crown Tuscan Statuesque Candlesticks with plain & cut Non-Locking Bobeches & Prisms (Pair)
245	_____	200/2 Helio 7½" Candlestick (1) Gold Cat Tail Decoration, Minor wear on Gold
246	_____	32 Windsor Blue 2¾" 3-toed AshTray with Card Holder
247	_____	1228 Crown Tuscan 9" Oval Pillow Vase, Gold Encrusted Portia (Acid Signed) MINT
248	_____	SS67 Crown Tuscan 2-Lite Dolphin Candlesticks (Pair)
249	_____	319/B2 Amethyst Georgian Basket, Crystal Handle
250	_____	1336 Crystal 18" Palace Vase Etched Diane
251	_____	1261 Crystal Oil & Vinegar Cruet, Etched Chantilly with Silver Top and Base, Pin head nick on 1
252	_____	1442 Crystal 9½ Lyre Candelabrum, Rectangular Molded base, #19 bobeches and 4" prisms (pair) Large Chip on candle cup and 1 on base
253	_____	240 Primrose 10" Round footed Cake Plate, Gold Encrusted 619 Gold Band overlay, Trim wear on foot

254	_____	32 Azurite 10½” Bowl, Green Enamel Decorate 625 Border etch, Green ink Stamp mark.
255	_____	1242 Crystal 10” Vase Etched Wildflower
256	_____	SS11 Crown Tuscan Sea Shell Statuesque 7” Comport
257	_____	3011/3 Carmen Statuesque Champagne Frosted Stem, crystal Foot
258	_____	48 Primrose 10 1/4” Ftd. Bowl D/619 Gold Band Overlay
259	_____	1050 Crystal 4½” Swans w/Molded Candleholders, Type 3 (pair)
260	_____	SS10 Crown Tuscan Sea Shell Statuesque 5” Comport
261	_____	Farber Forest Green #3400/92 - 32 oz. Ball Shaped Decanter in Farber Holder, Id Plate Engraved “Scotch” hanging around neck
262	_____	56 Amber Everglade 13” 3-Toed Sandwich Plate, (Springtime)
263	_____	P575 Crystal Pristine 10” Cornucopia Vases Etched Chantilly (pair)
264	_____	1305 Crown Tuscan 11” Keyhole Urn Vase
265	_____	140 Azurite 10” Center-Handled Sandwich Tray, Version 1
266	_____	3500/57 Crown Tuscan 8” 3-Compt. Candy Box & Cover, Charleton Roses, Slight Trim Wear
267	_____	1095 Willow Blue Decagon 3-Pc. Sugar & Cream Set
268	_____	1066 Amber 7” Ivy Ball
269	_____	1070 Amber 36 oz. Pinch Decanter, Ball Stopper
270	_____	432 Jade 8½” Ram’s Head Bowl
271	_____	59 Helio 6” Tall Comport (much more cupped, different version?)
272	_____	3 (200/34) Crystal 9½” Crucifix Candlesticks (pair)
273	_____	109 Auroa 9½” Dolphin Candlestick
274	_____	94 Ebony Large Sweet Pea Vase, D/610 Gold Band Overlay
275	_____	48 Jade 10¼” Ftd. Bowl, Rolled Edge (unusual)
276	_____	W60 Milk Heirloom 32 oz. Jug
277	_____	25 Mulberry 10” 14 Panel Bowl
278	_____	Willow Amber 10½” Plate Willow Etching
279	_____	119 Royal Blue 7” Basket, 12” Tall, Crystal Handle
280	_____	1381 Royal Blue 28 oz. Bar Bottle Etched “Rye”
281	_____	319 Royal Blue 12 oz. Georgian Tumblers (2)
282	_____	2719 Crystal La Touraine 8¾” Banquet Bowl, Scratched
283	_____	2699/41 Crystal 7” Buzz Saw Squat handled Basket
284	_____	669 Crystal 8” Comport/Salver, Feather Swirls, Scratched
285	_____	2760 Green/Carnival 6½” Nearcut Strawberry Nappy (Signed)
286	_____	2800 Marigold/Carnival 6½” Candlestick (Pair) RARE
287	_____	3400/102 Crown Tuscan 6” Globe Vase, Gold Encrusted Portia, Mint Condition
288	_____	1045 Lite-Emerald 13” Swan, Style I, Signed, Very small chip
289	_____	14 Ivory 10” Bowl, Ebony Foot
290	_____	47 Windsor Blue 9½” Cornucopia
291	_____	15 Windsor Blue 6” Seashell Comport
292	_____	3400/13 Crystal 6” 4-toed Comport Etched Candlelight
293	_____	3400/74 Crystal 5” 4-toed Comport w/895 “Sonora” Rock Crystal Engraving
294	_____	3500/146 Crystal 7” x 3¾” 2-compartment Relish with Farber holder, w/label
295	_____	3500/55 Crystal 6” 2-handled Footed Basket D/1047 Gold Encrusted Wildflower (partial label)
296	_____	3500/69 Crystal 6½” 3-compartment Relish with unidentified Rock Crystal Engraving
297	_____	3550/235 Crystal Caprice 6” Rose Bowl
298	_____	SS31 Crown Tuscan Seashell 8” Oval Dish, Charleton Roses Decoration
299	_____	430 Amber Cigarette Box Etch #704
300	_____	1242 Crystal 10” vase Etch Blossomtime
301	_____	3797/48 Carmen 10” oval bowl, Cambridge Square, Scratches
302	_____	319C Moonlight Blue Georgian candy box
303	_____	3400/144 Carmen/Crystal Cigarette Place card holder on Ashtray Foot
304	_____	Stratford Dianthus Pink #103 Stratford Individual Salt, (Signed)

305	_____	3500/112 Amber 15" x 4½" 3 compartment celery and relish
306	_____	3400/69 Crystal After Dinner Cup & Saucer Etched #746 Gloria
307	_____	#4 Crystal 11" Star Candlestick 1½" hole
308	_____	3400/47 Crystal 13" 4 footed crimped narrow bowl Etched #773 Wildflower
309	_____	3025 Amber/Gold Krystal 4½ oz. oyster cocktail (11)
310	_____	1305 Gold Krystal/Crystal 10" Keyhole Globe Vase, Scratched
311	_____	1018 Topaz Loaf Sugar HARD TO FIND
312	_____	66A Crystal Caprice Banana Bowl
313	_____	110 Crystal Caprice 8" Twin salad dressing
314	_____	21,22,23,24 Crystal Caprice 9½" Dinner Plates, (10) (Minor scratches), 8½" Salad Plates (9), 8½" Salad Plates (9) (minor scratches), 7½" Salad Plates (7) (Minor scratches), 6½" Plates (3) (scratches) (CHOICE of Sets)
315	_____	13 La Rosa Caprice Coasters (2)
316	_____	518 Moonlight Blue 8½" Draped Lady Flower Figure
317	_____	513 Willow Blue 13" Draped Lady Flower Frog, Satin Finish
318	_____	38 Moonlight Blue Caprice Sugar and Creamer (Pair)
319	_____	128 Moonlight Blue Caprice Mayo Set
320	_____	22 Moonlight Blue Caprice 8½ Plates (8)
321	_____	17 Moonlight Blue Caprice Cups and Saucers (8)
322	_____	300 Crystal Caprice 12 oz. Ice Teas (8)
323	_____	SS13 Various Caprice Sea Shell Ashtrays (4)
324	_____	344 Moonlight Blue 4½" Alpine Caprice Low Vase with Crimped top
325	_____	165 Moonlight Blue Caprice Alpine 6" 3-Ftd. Candy Box & Cover
326	_____	57 Azurite 8½" Low Footed Bowl
327	_____	1349 Crystal 12½" 4 footed crimped bowl Etched #758 Chintz #1
328	_____	3400/144 Forest Green/Crystal Cigarette Place card holder on Ashtray Foot
329	_____	Seashell Milk #21-Seashell 6" footed candy box and cover
330	_____	1380/1 Crystal 26 oz. Square Decanter E Rye
331	_____	1380/1 Crystal 26 oz. Square Decanter E Scotch
332	_____	3600/311 Crystal Martha Candy box & Cover Etch 772 Chantilly
333	_____	2650 Crystal Oval Orange Bowl, Signed Nearcut
334	_____	550 Mulberry 48 oz. Pitcher (6 #550 Lemonade Mugs), Etch 725, Some Trim Wear
335	_____	7606 Crystal 1½ oz. Tumbler Etched Marjorie
336	_____	SS46 Amethyst 7½" Seashell Flower Holder
337	_____	1528 Smoke 10" Vase, RCE Wedding Ring
338	_____	1045 Pink 13" Swan (Type 1) (Fin Chip, some mold like smoothing)
339	_____	66/1338 Crystal Caprice Alpine 13" 4-Ftd. Crimped Bowl & 6" 3-Lite Candlesticks (pair)
340	_____	3000 Crystal 7½" Footed Basket, Gray Floral 2079 Cutting
341	_____	3103 Crystal ¾ oz. Brandy with Red Stem
342	_____	3400/68 Heatherbloom Cream & Sugar, Creamer signed
343	_____	1238 Amethyst 12" Keyhole Vase, Floral Sand Carving, UNUSUAL
344	_____	3450 Forest Green Nautilus 28 oz. Wine Decanter
345	_____	405 Crystal 9" Ftd. Bowl, Aero Optic/ Etch 732
346	_____	319/C Carmen Georgian Candy & Cover
347	_____	1236 Carmen 7½" Key Hole Ivy Ball
348	_____	3400/101 Carmen 76 oz. Jug, (line in handle)
349	_____	1321 Carmen 28 oz. Sherry Decanter, (Wrong Stopper)
350	_____	P575 Crystal 9" Cornucopia Vase Etched Rose Point
351	_____	1402/65 Carmen Tally-Ho Tall Comport
352	_____	509 Peach-Blo 8¾" 2 Kid Flower Frog
353	_____	1125 Willow Blue 16" Everglade, Buffalo Bowl, Satin Finish on one side (Mystic Blue)
354	_____	Crystal 4 Piece Game Set, (2 Carmen ft., 2 Ebony ft) (Set)
355	_____	SS18 Windsor Blue Sea Shell 10" 3-Toed Bowl

356	_____	3400 Forrest Green 4 Footed Nut Cup (5)
357	_____	3400/119/1341 Amethyst 12 oz. Ball Shaped Decanter & Mushroom Tumblers (4) Set
358	_____	2699/1 Crystal Near Cut Buzz Saw Butter & Cover, Signed
359	_____	556/494 Peach-Blo Luncheon Set - 8" Plates (4) & Footed Cups & Saucers (4) (Set)
360	_____	Crystal 22 oz. Dog Bottle, No Cap
361	_____	2800 Amber Powder Box (2), Bakelite Decorated Lids (pair)
362	_____	5668 & 5962 Crystal Farber Chrome Statuesque Candlesticks (pair) & Statuesque Comport, Set, Comport scratched
363	_____	366 Jade 8 1/2" Twist Candlesticks (pair)
364	_____	2860/10 Crystal Lexington Berry Cream & 2-Hld. Berry Sugar, Set
365	_____	71 Azurite 7 1/2" Candlesticks (pair)
366	_____	3500/97 Crystal 14" 2-Hdl. 4-Compt. Celery & Relish, Silver décor, non-Cambridge Cutting on Bottom
367	_____	2780 Crystal Near Cut Strawberry 10" Plate & Spooner Celery, Set, both Signed
368	_____	2780 Crystal Near Cut Strawberry 7" Candlesticks (pair), Chips on bases
369	_____	877 Peach-Blo 11 1/2" Decagon Comport, Etched Cleo
370	_____	3400/1 Amber 13" Bowl, Etched Apple Blossom
371	_____	512 Peach-Blo 8 1/2" Rose Lady Flower Figure
372	_____	2514 Crystal 8" Master Bowl and (4) 4" nappies (Set)
373	_____	2351 Crystal 11" Punch Bowl and Stand Small Size
374	_____	3200 Crystal 9" Tall Cylinder Vase cut Wild Rose
375	_____	2860 Crystal Lexington 8" Footed Vase
376	_____	518 Peach-Blo Satin 8" Draped Lady Flower Frog
377	_____	SS21 Crown Tuscan Seashell 6" Candy and Cover
378	_____	138 Crystal Creamer and Sugar, Unknown Etching, Gold Encrusted
379	_____	3600/495 Crystal Martha 5 1/2" 2 lite Candlestick, Etched Chantilly (Pair)
380	_____	3500/16 Crystal Gadroon 11" Bowl Etched Elaine
381	_____	3122 Crystal 5 oz. Footed Tumbler Etched Diane (4)
382	_____	9 Crystal 8" Mount Vernon Covered Urn
383	_____	3121 Crystal 3 oz. Cocktails Etched Wildflower (3)
384	_____	1554 Crystal 6" Small Cornucopia Double Candlestick
385	_____	Cascade Advertising Printing Block
386	_____	208/210/206 Crystal Caprice Smoker Set {Cigarette Box & Cover (2) & 4 1/2" Ash Tray & 3" Ash-tray (4)}
387	_____	33/57 Crystal Caprice Salad Set (14" 4-Ftd. Cabaret Plate & 10" Salad Bowl)
388	_____	80 Primrose 6 1/4" Vase
389	_____	319 Pistachio Georgian Basket, Crystal Handle
390	_____	Jade Stick Candlestick Vase, Etched
391	_____	2899 Crystal/Ebony Cambridge Flower Frogs, 1916 Date Crystal (3) Ebony (1)
392	_____	96 Jade 1 lb. Candy & Lid, Silver Spatter Decoration (Trim Wear)
393	_____	500/30 Rubina Honeycomb 9 3/4" Flat Bowl, Scratch (Signed)
394	_____	842 Lite-Emerald 11 3/4" Decagon Bowl, Etched Gold Encrusted Hunt Scene, (Signed)
395	_____	2660/131 Crystal 32 oz. Nearcut Wheat Sheaf Whiskey Decanter & Archfoot Stopper
396	_____	1402/100 Carmen 3 oz. Cocktail D/1007/8 Gold Overlay
397	_____	2631 Crystal Marjorie Nearcut Water Carafe
398	_____	133 Azurite 3" x 5" Ash Tray Lid only for Cigarette Box
399	_____	477 Crystal 9 1/2" Pickle or Corn Dish, Etched Wildflower, Gold Trim
400	_____	Mount Vernon Advertising Sign, Cardboard & Wood



Webmaster

NCC recognizes the importance of having a digital presence. Our website, along with Facebook and email, are key methods of keeping our members up-to-date about events.

We are searching for a volunteer to be our new webmaster. David Adams has had the job for over fifteen years and would like to pass the task on to someone new. If we don't have a volunteer, then the NCC will incur the expense of having a contractor to do the job. Please, those of you who are computer-literate, consider volunteering.

Send any questions to:
webmaster@cambridgeglass.org



In Memoriam

Betty (Atkinson) Glass member #7077 passed away August 4, 2021 at the age of 92 in Titusville, FL and was a long-time collector of all things Cambridge. Her husband William R Glass worked for a short time at the Cambridge Plant. Her father-in-law John "Skeet" Glass was a glassblower at the Byesville and Cambridge factories. Many relatives on both sides of the family worked in various departments over the years.

Our thoughts and prayers are with the family.

Francis "Fran" Pavlov member #100 passed away December 4, 2021. Along with her husband Dick, they were instrumental in the early days of NCC getting established. Fran served as the first editor of the newsletter for two years, and came up with the name "Crystal Ball".

Our thoughts and prayers are with the family.

Betty Sivard member #6829 passed away October 2, 2021. Betty enjoyed greeting visitors to the museum in her role as Museum Docent for 20+ years, starting at the old museum on Route 40 and continuing at the current museum. The NCC Board of Directors honored Betty with Honorary Status in June 2008.

Our thoughts and prayers are with the family.



Clearwater
Elegant & Depression Glass Show & Sale

February 12 & 13, 2022
Sat. 10 am to 4:30 pm; Sun. 11 am to 3 pm
Morningside Recreation Complex
2400 Harn Blvd, Clearwater, FL 33764

Featuring American made glassware and pottery

Cambridge Heisey Fostoria Tiffin Morgantown Jeanette Hocking Hall Fiesta Imperial Federal
New Martinsville Indiana Padon City Hazel Atlas L. E. Smith MacBeth Evans Lancaster

Dealers from across the country

Admission: \$7.00; \$1.00 off with card or ad

Show Information: (850) 673-9607 Email: larry541848@aol.com



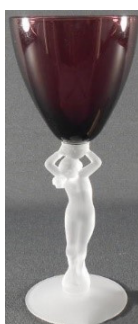
Zoom & Tell: Satin Treatments

by David Ray

The November Zoom & Tell program focused on the many satin treatments applied to Cambridge glass. Larry Everett led a very informative program educating guests about the many different satin finishes the Cambridge Glass Company used to decorate glassware. Cambridge used satin finishes throughout their years of operation which began during the Near Cut era with the Daisy and Nasturtium designs. The satin finishes were used to highlight certain features of the Near Cut design.

As the company grew, Cambridge increased their use satin finishes to highlight glassware. Most of the transparent colored figural flower frogs, including the Draped Lady (short & tall), Bashful Charlotte (short & tall), Rose Lady (Type 1 & 2), Two-Kid, Eagle, Bird on Stump, Heron, Sea Gull and Melon Boy were sold with a glossy or satin finish. As Cambridge continued to introduce new lines, they often incorporated a satin finish or satin highlights (Everglade and 3011 stems) to add variety and interest to their products.

Shell interior), Cinnamon (amber), Jade (Light Emerald), Mystic Blue (Willow Blue), Rose Du Barry (Peachblo), Grape (Amethyst Interior), Almond (Amber interior), Jade (Forest Green interior) and Krystol (crystal interior).



During the 1920's, Cambridge introduced the Decalware line which was produced nearly 100% on satinized crystal glass. This is an extensive line that includes dinnerware and several serving pieces.



The Caprice line was introduced in 1936. Cambridge added the Alpine finish to Moonlight, La Rosa and crystal items which highlights the swirl design on most items. The Alpine finish continued until the early 1950's.

In addition, Cambridge incorporated satin treatments to highlight etchings and enamel decorates. The enamel decorates include Ski Scene, Century of Progress and Sea Nymph. The Lily of the Valley etching incorporates the etching design along with a significant portion of the glass possessing a satin finish.



After the educational program, guests shared many beautiful and unique pieces of satin decorated Cambridge glass. I believe the extensive use of satin glass designs by the Cambridge Glass Company was influence by its popularity in England, the birth home of A. J. Bennett.

The theme schedule for upcoming Zoom & Tell is set for the next several months. The programs are always scheduled for the third Thursday of the month at 8pm ET. If you have any questions about joining a Zoom & Tell program, please contact David at westervillesh@hotmail.com.

For some satin decorations, Cambridge gave a specific name. Some of the terms include: Sateen O-Pearl, Silver Etched (Near Cut Nasturtium), Alpine (Caprice), Pearl Mist (Everglade & Arcadia), Moonstone (crystal Sea



- January 20 – Heatherbloom
- February 17 – Opal, Carrara & Milk
- March – No program: March Benefit Auction
- April 21 – Helio & Violet
- May 19 – Rubina & Sunset

Until next month, happy shopping!

Zoom & Tell: Ebony

by David Ray

The color theme for the October Zoom & Tell was Ebony. Les Hansen opened the program with background information on the production of Ebony glassware. Les explained that the Ebony-colored glassware is most commonly produced using cobalt or manganese in significant quantities to make blue or purple glass so dark that it appears to be black. The ebony glassware produced at the Cambridge Glass Company was black-amethyst glass. Cambridge used manganese to produce a very dark purple colored glass that appeared to be black. Ebony glassware was first introduced at the Cambridge Glass Company in 1916. During this time, Cambridge applied a hand-painted pink and orange rose decoration to various items which are highly prized by collectors today. A very small number of Near Cut items were produced in Ebony.



Lotus, Charlton, etc. purchased and decorated Ebony glass from Cambridge. Ebony glassware with silver and gold decorations are difficult to find. Competition for these decorated pieces is very strong among collectors.

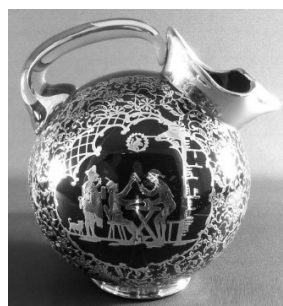


For about 6 months in 1954, Cambridge produced Ebony glass with a satin finish called Ebon. A limited number of items were produced in Ebon. Cambridge applied a star and bird gold decoration to most Ebon items. Although Ebon was produced for a very limited period of time, Ebon is readily available and can be purchased for reasonable prices.



According Cambridge reference materials, Ebony was produced at various time from 1916 until 1954, depending on market demand. During the Zoom & Tell, participants shared many beautiful pieces from their collections. The dark color of Ebony provides a perfect background for gold, silver and enamel decorations. Not only did Cambridge apply many decorations to Ebony glassware, but many outside decorating companies including Rockwell, Depasse-Pearsall, National Silver Deposit,

If you were unable to join the October Zoom & Tell, you can send an email to membership@cambridgeglass.org to request the recording of the program. The December Zoom & Tell will feature Amethyst and Mulberry colored glassware. Begin searching your display cases for items you wish to share. The December Zoom & Tell is scheduled for Thursday, December 16 at 8:00 PM EST. If you have any suggestions for future Zoom & Tell programs, please send your suggestions to David at westervillesh@hotmail.com. Happy hunting!



Welcome to the eBay Report, featuring Cambridge glass items that sold on eBay circa mid- October to mid-December 2021. Selling prices are rounded to the nearest dollar. If no color is mentioned, assume that the piece or part of it being discussed is crystal. If I refer to an auction as “incognito,” that means that the seller did not know he or she was offering Cambridge glass, and didn’t use the word “Cambridge” in the description. I am also trying to make sure I mention if a listing was a Buy It Now offering, as opposed to an auction style listing. I think it’s important to distinguish between the two, as the price for an auctioned item reflects competitive bidding (or no competition, if it sells for the opening bid.)

Rose Point

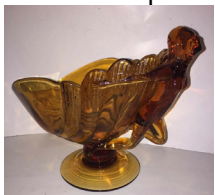
I’m not going to report on a bunch of Rose Point items this month. No, instead I am going to talk about the Rose Point book by Gary Turner and NCC that I ordered and received recently. I can sum it up simply as: Wow - wow - wow! Each piece known to have been made is illustrated in large size, with the etching and other details in ultra-high definition. You have never seen something like this before. There is also a section showing the pieces made in Amber, Ebony, Carmen, Crown Tuscan, and a lone piece in Royal Blue. If you can’t easily identify a piece of Rose Point using this book, you either have your eyes shut and the lights out, or you have an unlisted item. Since Rose Point was etched on so many shapes, this book will really help me find shape numbers quickly – even when the shape I’m looking at has a different etching or cutting on it. Every collector of Cambridge glass (regardless of whether he or she collects Rose Point), and every Cambridge glass dealer, needs this book!

Statuesque (Nude Stem) and Related Items

A seller in Canada offered 2 champagnes with Forest Green bowls at \$15 each, plus a shipping cost of a mere \$89. The auction ended early because the item was no longer available.



An ivy ball with Carmen top and satinized stem was offered for \$350, and sold when the seller reduced the price by 10%.



A #40 Seashell flower or fruit arranger (commonly referred to as the Flying Nude bowl) in Amber sold for \$500 after only two bids.

A cocktail with Crown Tuscan stem and Amber bowl sold for \$154.

Gold, Silver and Enamel Decorations

A seller offered a dozen Ebony #693 6 inch canape plates with a Rockwell sterling decoration of an ibex and a gazelle in a circular medallion for \$15 each. All sold.



A pair of #626 3 1/2 inch candleholders in Ivory with gold trim and blue enamel-filled Blue Willow etching were offered for \$65, but the auction ended because the items were No Longer Available. There was considerable wear to the enamel on one, and some gold loss as well.



A pair of #657 candlesticks with gold encrusted Rose Point etching on the base, and some gold trim, sold for the opening bid of \$100. These are the ones with the square sockets decorated with ram’s heads, and the fruit-filled cornucopia in the center.



A #779 14 inch swirl optic vase in Peach-Blo with gold encrusted Dresden Rose etching sold for \$359 on a Buy It Now. Though shaped slightly differently than the one shown on page 9 of the 1927-1929 catalog reprints, I believe it would be the #779.



Etched Tableware & Stemware

A seller offered 4 Amber #693 canape plates with offset ring, etched Cleo, at \$35 each Buy It Now. All sold. Now the buyer just has to find the matching cone-shaped cocktail tumblers.

A 13 inch Round Ware plate in Light Emerald Green with Willow etching sold for \$56.

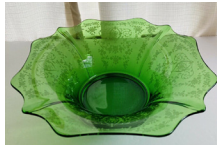


A lovely #920 Round Ware butter and cover in Peach-Blo etched #520 sold for \$85 Buy It Now. It didn’t have the glass drainer, darnit.



A set of 4 4 1/4 inch tall #7606 tumblers etched Diane sold for \$92. A very unusual shape.

A #3400/32 13 inch flat console bowl with Diane etching in Forest Green sold for \$125 Buy It Now. On the rare occasions you find Diane etched on that color, it usually seems to be a keyhole stem comport.



A #124 9-1/4" 68 ounce pitcher in Peach-Blo with Cleo etching sold for \$190 Buy It Now. This is not a shape I see very often.



A set of 10 Light Emerald Green #3077 champagnes with Hunt etching were listed for \$795, and then sold for \$397.50 when the seller offered a 50% discount.



Miscellaneous

A #1070 pinch decanter in Ebony with the scarce golf ball stopper and original label sold for \$30.

A 5 inch tall comport with flat rim and honeycomb optic in the Rubina color sold for a high bid of \$12.50, in an incognito listing where the seller surmised that it was Libbey Amberina glass.



Speaking of Rubina, a pair of #439 7-1/2 inch candlesticks sold for \$25 Buy It Now, also in an incognito listing.

An Everglade "swans and cattails" 16 inch low bowl in Forest Green sold for a very reasonable \$85. The seller called it a cake or torte plate, but did not photograph it at an angle that enabled me to see whether it was really rather flat, or simply a very shallow bowl.



A set of 10 #1 swirl muddlers in Forest Green were offered for \$125 in an incognito listing, and sold for an undisclosed Best Offer.



A #95 one pound footed, covered candy in Peach-Blo with the applied rosebud finial in Light Emerald Green and a light floral cutting, sold for \$146. Correct me if I'm wrong, but due to its 8-1/2 inch height, I am going to assume that it was the #95, rather than the half-pound #96.

Speaking of applied flower finials, from the "It Ain't Cambridge" Department comes a "Vintage Cambridge Glass Pink Iridescent Rose Knob Pedestal Covered Candy Dish." This was actually a Fenton footed covered powder jar in Velva Rose



pink stretch glass. It sold for \$87 to what I'm sure is a very grateful Fenton glass collector. I understand how the seller might think it was Cambridge, but remember: "If it looks kinda like a duck, and quacks sorta like a duck... it might be a goose."

A pair of #1066 footed cigarette holders with cupped ashtray foot, cut Achilles, sold for \$200. The seller noted a possible flaw on the top rim of one.



A #1352 Frog vase (the warty skin/no handle version) in Ebony sold for \$225. Some chips on the ground and polished edges of the mouth were noted.



A #507 covered "Temple Jar" (the blown cover version) in Light Emerald Green with etching #704 sold for \$280.

A set of 10 Near Cut Wild Rose punch cups in Carmen were offered for \$170, but sold for an undisclosed Best Offer.



A different seller offered a Near Cut Wild Rose punch bowl base in Carmen for \$295, which sold for an undisclosed Best Offer. Some nicks and wear were noted.



A Near Cut Inverted Strawberry cuspidor-shaped vase in Emerald carnival glass sold for an impressive \$620 after 24 bids. The seller called it a "spittoon," but that's the saloon-level word for such an object. The parlor-level word is "cuspidor."

A rare Caprice #202 covered cracker jar in Moonlight Blue was offered for \$800, but sold for an undisclosed Best Offer. It was missing the metal bail, and had a nearly 1-1/2 inch chip out of the lid.



That's it for now. If you see any interesting Cambridge glass on eBay that you think I should be watching or reporting on, or if you have any other input, feel free to contact me at LAGlass@pacbell.net. I am well aware that I don't catch every interesting listing, and now that eBay no longer has a category devoted to Cambridge glass, I will especially need your help.

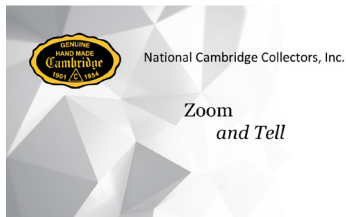
Until next time, happy Cambridge hunting!

NCC Events

**Spring Membership Meeting
Friday March 18, 2022**

**2022 NCC Auction
Saturday March 19, 2022**

**2022 NCC Convention
June 23-25, 2022**



Contact membership@cambridgeglass.org if you don't get the monthly email with the Zoom information.

January	Heatherbloom
February	Opal, Carrara & Milk
March	No meeting: March Auction

Member Benefit

Each NCC household is allowed one free 20-word classified ad in the Crystal Ball per calendar year as part of their membership. This can be a "For Sale" or "Wanted" type of classified ad. Submit your ad by email to editor@cambridgeglass.org

CLASSIFIEDS

**Why haven't you placed your ad yet?
What are you looking for?**

January 15-16, 2022

Cartersville Looking Glass Show & Sale
Elegant and Depression Glass, China & Pottery
Cartersville Civic Center
435 W Main St
Cartersville, GA 30120
<http://www.meyershows.com>



January 22-23, 2022

Depression Glass Club of Northeast Florida
47th Annual Show & Sale
Fraternal Order of Police Bldg.
5530 Beach Blvd.
Jacksonville, FL 32207
<http://www.depressionglassclubjax.com>

February 5-6, 2022

South Florida Depression Glass Club
48th Vintage American Glass and Pottery Show & Sale
Emma Lou Olson Civic Center / 1801 NE 6th Street
Pompano Beach, FL 33060
<http://www.SFDGC.com>

February 12-13, 2022

Clearwater Elegant & Depression Glass Show & Sale
Morningside Recreation Complex / 2400 Harn Blvd.
Clearwater, FL
larry451848@aol.com

February 19-20, 2022

Houston Glass Show & Best Little Antique Show in Texas
Fort Bend County Fairgrounds
4310 Hwy 36 S
Rosenberg, TX 77471
<http://www.maxmillerantiques.com>

February 26, 2022

Green River Depression Era Glass Club
44th Annual Green River Glass Show & Sale
Kent Commons / 525 4th Avenue N
Kent, WA
kayswede@msn.com

NCC welcomes the following new members

Bowen, Candance	OH
Bowen, John	OHI

DEALER DIRECTORY

Dealer Directory - \$24 for 12-months, size limited by box (see below). Includes listing on NCC website. Electronic submissions should be emailed to: editor@cambridgeglass.org

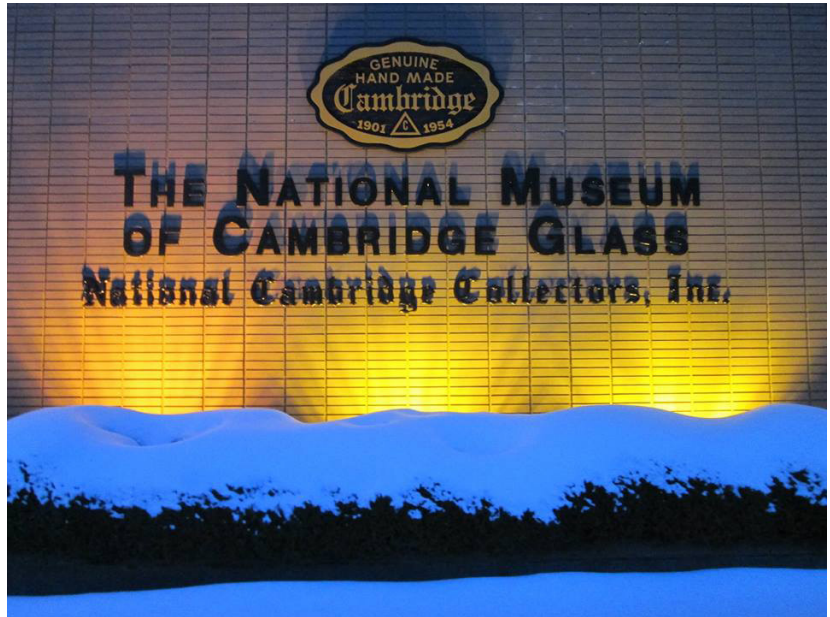
Advertising Rates:

1/8 page \$15 1/4 page \$20
1/2 page \$30 Full page \$50

Mailed submissions and all payments should go to PO Box 416, Cambridge, OH 43725. Deadline is 10th of preceding month. Ads must be paid in advance. Show listings are FREE; send info to PO Box or e-mail address 60 days before event.

<p style="text-align: center;">Max Miller Elegant American Glassware www.maxmillerantiques.com</p> <p>The Market Place 10910 Katy Freeway. 713-410-4780 Houston TX 77043 mmxglass@aol.com</p>	<p style="text-align: center;">ISAACS ANTIQUES (740) 826-4015</p> <p style="text-align: center;">↔ located in ↔ DealBusters Marketplace 61 S. 2nd Street Byesville, OH (740) 605-1010</p>
<p style="text-align: center;">Glen & Carolyn Robinson White Rose Antiques Specializing in Depression Era Glassware</p> <p style="text-align: center;">2454 McFarland Road York, SC 29745</p> <p>803-684-5685 gandcrobinson@aol.com whiteroseglassware.com</p>	<p style="text-align: center;">MARGARET LANE ANTIQUES</p> <p>2 E. Main St. New Concord, OH 43762 Lynn Welker (740) 705-1099</p> <p>Cambridge Glass Matching Service Hours: Mon-Fri 10-12 AM, 1-5 PM or by appointment</p>
<p style="text-align: center;">CRYSTALLINE COLORS <i>Cambridge • Fostoria • Elegant Glass</i> Booth and Showcases in the Medina Antique Mall Medina, OH (I-71, exit 218)</p> <p style="text-align: center;">Lynne R. Franks 216-661-7382</p>	<div style="border: 1px solid black; padding: 5px;"> <p style="text-align: center;">Connecting Buyers & Sellers!</p> <p style="text-align: center;">Tell us what you are looking for and we help find it.</p> <p style="text-align: center;">CAMBRIDGE GLASS.US</p> <p style="text-align: center;">P. Snyder 740-601-6018</p> <p style="text-align: center;">E-Mail and Find Your Glass!</p> <p style="text-align: center;">psnyder@cambridgeglass.us www.cambridgeglass.us</p> <p style="text-align: center; font-size: small;">When you are searching for Cambridge glass, email your request and it is emailed to all members and dealers. P. Snyder, 1500 Edgewood Dr., Circleville, Ohio 43113</p> </div>
<p style="text-align: center;">CRYSTAL LADY 1817 Vinton St. Omaha, NE 68108 Bill, Joann and Marcie Hagerty 402-699-0422</p> <p>Specializing in Elegant Glass & Collectibles www.crystalladyantiques.com</p>	<div style="border: 2px solid red; padding: 10px; text-align: center;"> <p style="font-size: 1.2em;">Our House Antiques</p> <p>Linda and David Adams Las Vegas, Nevada 702-302-8282</p> <p style="font-size: small;"><i>Shows and Mail Order only</i></p> <p style="font-size: small;">email: David@OurHouseAntiques.com www.OurHouseAntiques.com</p> </div>

National Cambridge Collectors, Inc.
PO Box 416
Cambridge OH 43725
email: editor@cambridgeglass.org
website: www.cambridgeglass.org



***The National Museum
of
Cambridge Glass
Open April thru October
only***

