



# Cambridge Crystal Ball

Published by the National Cambridge Collectors, Inc. as a resource which informs, invites and inspires people to encourage the continued preservation of the glass produced by the Cambridge Glass Company of Cambridge, Ohio for future generations.

Issue No. 538

ISSN 2474-5987

May 2020

## June 2020 Convention Cancelled

Well, there is no way to sugar coat this.

The Board of Directors voted to cancel the 2020 convention. A multitude of reasons for this cancellation exist. Foremost among them is the concern for the health of convention registrants, museum guests, dealers, and other visitors. There is also the uncertainty of many other factors like travel restrictions, social distancing, etc.

If you made a hotel reservation, remember to cancel it.

We are already planning the 2021 convention which will be held on June 24-26, 2021. We will miss seeing you in Cambridge this summer and sharing smiles, hugs, and well wishes. Susan and I encourage you to reach out to us if you have comments, concerns, or just need a "Cambridge glass" voice to talk to. My cell phone number is: 740-606-1367 and our email address is: [heartlamps@sbcglobal.net](mailto:heartlamps@sbcglobal.net).

Perhaps we can create virtual networks to meet on-line. There are two active Facebook sites as well:



Cindy Arent and Lindy Thaxton host the National Museum page at: <https://www.facebook.com/NationalMuseumOfCambridgeGlass/>

David Ray hosts the member oriented site at: <https://www.facebook.com/Cambridge-GlassNational-Cambridge-Collectors-205783832795228/>

Don't forget, if you want to view past convention or member meeting presentations or "Bring and Brags" the Miami Valley Study Group website is the place to go: <https://mvsg.org/Videos>

Please continue to check the NCC website for additional information: <http://www.cambridgeglass.org>

We're all in this together and we will get together again. Please be safe, be nice, and think of sunnier days.

Your convention chairs,  
Susan and Larry Everett.



### What's Inside

June 2020 Convention Cancelled . . . . .	1
President's Message . . . . .	3
Museum Still Looking Forward to Opening Date . . . . .	4
Alexa Serves as Your Personal Museum Docent. . . . .	7
March 2020 Membership Meeting Minutes . . . . .	7
Cambridge Curiosities . . . . .	8
eBay Report . . . . .	10
NCC Members Attend February 2020 Shows . . . . .	12
New Members. . . . .	14

# National Cambridge Collectors, Inc.

PO Box 416 Cambridge, OH 43725-0416

## Board of Directors

	2020	
Cindy Arent	Larry Everett	Sharon Miller
	2021	
Ken Filippini	Freeman Moore	Lyle Stemen
	2022	
Julie Buffenbarger	David Rankin	Frank Wollenhaupt
	2023	
Nancy Misel	Lindy Thaxton	Lynn Welker

## Officers

President	Freeman Moore
Vice-President	Ken Filippini
Secretary	Nancy Misel
Treasurer	Lindy Thaxton
Sergeant-at-Arms	Larry Everett

Director of Strategic Planning	Ken Filippini
Director of Human Resources	David Ray
Chair, Endowment Committee	David Rankin

## MEMBERSHIP QUESTIONS?

Please send address changes to:  
Membership - NCC  
PO Box 416  
Cambridge, OH 43725-0416  
or by e-mail to:  
[membership@cambridgeglass.org](mailto:membership@cambridgeglass.org)

## Vice President

Member Relations  
Convention  
Member Social Media  
Glass Dash  
Glass Show  
Study Groups  
Webmaster

## Member Services

Freeman Moore (acting)  
Freeman Moore, Membership Database  
Larry & Susan Everett  
Alex Citron & David Ray  
Larry Everett & Frank Wollenhaupt  
David Ray, Mike Strebler, Jack Thompson  
Jeannie Moore, Study Group Coordinator  
David Adams

## Development

Julie Buffenbarger  
Ken & Jane Filippini, Annual Fund Directors  
Larry Everett, Director of the Heritage Society  
Bev & Will Acord,  
Lynn Welker, Auction Managers  
Susan Everett & Frank Wollenhaupt, Jewelry  
Convention: Jonathan Fuhrman

## Education

Larry Everett  
Freeman Moore, Executive Editor  
Mark Nye, Director of Publications  
Dave Rankin, Director of Media Productions  
Mark Nye, Archivist

## Museum

Cindy Arent  
Lindy Thaxton, Director of Public Operations  
Cindy Arent,  
Joe Miller,  
Lindy Thaxton  
Lindy Thaxton, Director of Inventory Management  
Lynn Welker, Director of Collections  
Cindy Arent, Gift Shop Manager  
Lynn Welker, Gift Shop Manager  
Mark Nye, Director of Archives  
Cindy Arent, Director  
Cindy Arent

## Administration

Lindy Thaxton  
Lisa Neilson, Office Manager

## Vice President

Public Operations  
Facilities & Grounds  
  
Inventory Management  
Collections  
Museum Gift Shop  
  
Archivist  
Museum Social Media  
Community Relations

## Vice President

Accounting & Finance



## CONTACT US

NCC Business Manager  
Phone: 740 432-4245

[businessmanager@cambridgeglass.org](mailto:businessmanager@cambridgeglass.org)



Freeman Moore, President

e-mail: [president@cambridgeglass.org](mailto:president@cambridgeglass.org)

Nancy Misel, Secretary

e-mail: [secretary@cambridgeglass.org](mailto:secretary@cambridgeglass.org)

## Heritage Society

*Ensuring the preservation mission of the NCC through planned giving and estate bequests.*

Members of The Heritage Society are those who have included the NCC in their wills or estate plans, thus providing the organization with a secure future.

The mission of The Heritage Society is to foster smart estate planning and to assure that NCC is not forgotten as an important beneficiary. Any pledge is meaningful and appreciated.

All Cambridge collectors - both current and future - will benefit from, and be grateful for your support.

Let us know how we can help with your future plans.

## Museum:

National Museum of Cambridge Glass



Like us on Facebook

Member: Cambridge Glass/National Cambridge Collectors

NCC Website: [www.CambridgeGlass.org](http://www.CambridgeGlass.org)

Miami Valley Study Group Website: [www.mvsg.org](http://www.mvsg.org)



# PRESIDENT'S MESSAGE

## *First March Then June*

*“These are the times that try men’s souls.”*

Thomas Paine wrote those words in 1776 while thinking about the fight for freedom. Today, we are in a different battle against COVID-19, the illness caused by the novel coronavirus.

As Larry Everett stated on the front page, there’s no way to sugar coat this. Convention 2020 is cancelled.

Could we have rescheduled?

Not really. There is no clear answer on when people will feel safe being in groups with other people. As I write this, 43 states have “stay at home” orders. Even if the State of Ohio relaxed and permitted group activities, would you be comfortable in traveling? What about dining out? Even if we opted to reschedule, it would be a logistical challenge of finding a date to avoid conflicts, getting dealers, etc.

Could we have gone virtual?

From speaking with a lot you, I understand your expectations for a convention are 1) opportunities to buy glass, 2) interact with friends that you might only see once a year, and 3) learn something at the programs. Having a virtual glass show & sale and glass dash just wouldn’t work! Interacting with friends is the unknown; when will you be comfortable in groups? Okay, learning can be done online. We know that schools and colleges switched to an online approach to finish their semesters.

Yes, we will have the annual meeting on Friday June 26<sup>th</sup>. It will be virtual. We didn’t have the March membership meeting. If schools, churches, and businesses can go online for meetings, then we’ll try it. The annual meeting is our opportunity to inform you about what the organization is doing. We’ll announce election results. More details will be in the June Crystal Ball. I hope you will make time to join us.

What about the museum? Cindy Arent and her team has it ready to open; we just don’t know when. And then, when it does re-open, how quickly will visitors return?

March and April have been full of upheavals to what we thought was normal. Consider how much has changed in so little time because of the novel coronavirus affecting all of our lives. What we talk about today, could change tomorrow. Hopefully, the next few months allows us to restart some activities and maybe, just maybe, find a new normal.

April is the time of year when we mail out the Annual Fund along with the ballots for the board of directors election. We use the Annual Fund as your opportunity to renew support for this organization. This could be a difficult time for some of you. We don’t want to lose any Friends of Cambridge this year. When you get your Annual Fund, I hope we can count on your support; but if not, check the appropriate box on the response form. My thanks to Ken and Jane Filippini for completing the task of getting everything mailed out. Make sure your ballots are returned to NCC prior to June 20 so they can be counted and the results announced at our annual meeting.

### *What’s coming?*

We will miss having our convention, but you can “raise a glass” with friends at our online annual meeting in June. Send me a picture of you with a Cambridge stem and we’ll share them in June.

What’s on your Cambridge “wish list” for this year and beyond, and how can we help?

Sincerely,

Freeman Moore  
[president@cambridgeglass.org](mailto:president@cambridgeglass.org)

# National Museum of Cambridge Glass Still Looking Forward to Opening Date

By Cindy Arent

It has been a month since the museum was to open for the 2020 season, and we are still looking forward to the day when members and guests can visit in person. We miss seeing the smiling faces as visitors see the beautiful Cambridge Glass on display and learn about the history of the company. In the meantime, every effort is being made to keep everyone connected through social media on the museum Facebook page and also on the NCC page where David Ray has been posting photos. Included with my article are a few of the recent posts from the museum page in case you didn't have the opportunity to see them.

Even though the museum is closed, we received a wonderful donation in the mail from someone in California who had recently called and wanted to donate. One of the pieces in the box was a W 142 5 inch peg vase in Milk. As far as we know, it is the only one that exists! It was originally in the possession of Walter O'Malley who was Paymaster at The Cambridge Glass Company for many years. It's wonderful that the Milk peg vase has returned home to Cambridge, Ohio and is now on display at the National Museum of Cambridge Glass for all to enjoy. History saved!



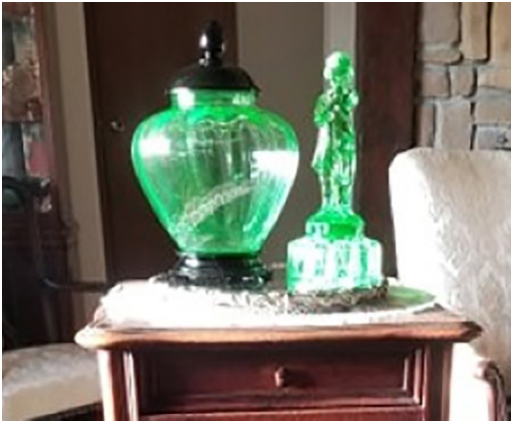
The first piece of Cambridge Glass, the Big X pitcher, will be celebrating 118 years on May 20<sup>th</sup>. Mark your calendar for May 20<sup>th</sup> and raise your favorite piece of Cambridge stemware in a toast to the occasion. Happy 118<sup>th</sup> Birthday to the Big X pitcher!



A matching grant opportunity has become available through Cambridge Main Street and Heritage Ohio. It is a long shot due to the possibility of funds being pulled due to the pandemic, but it is worth giving it our best "Cambridge Glass" try. I have submitted the grant application to receive matching funds to replace the museum's smoke and fire alarm system. Our security company has recommended they be replaced due to age. Three additional detectors would be added, one in the museum auditorium and in two separate utility closets. Please keep your fingers crossed!

An update on the future of the museum's opening date will be included in the June issue of the Crystal Ball and we hope for good news! Until then, stay safe and enjoy using your Cambridge Glass at home. You can share a photo with all of us in the next issue of the Crystal Ball.

Hoping to see you all soon!



Members Tim and Nancy Crose have sent some wonderful photos to share on the museum Facebook page during the past month. This photo features two pieces of Cambridge Light Emerald.



When we are able to open the museum, we promise to greet you with the same warmth and enthusiasm shown by employees of the Cambridge Glass Company Sample Room many years ago. Company employees left to right: Margaret Mitchell Thaxton, Betty Mitchell, Dorothy Noble Cantor and Gwen Mitchell Cortese. Photo circa 1950 when the company introduced the Cambridge Square line.



The Cambridge Flying Lady bowl in Crown Tuscan makes a beautiful centerpiece any time of year. She is a very classy lady. Thank you for sharing, Joey Pirl!

Sometimes the cabinet we display our Cambridge Glass in has as much history as the glass. This piece was made by G. R. Fixtures Company, Grand Rapids, Michigan and it's first home was a millinery shop in Bellaire, Ohio. It was then moved to the Bellaire Glass & Artifact Museum until it closed because the property had been taken for the expansion of Route 7. The showcase is now in a home and used to display Cambridge Glass.





This photo was sent to us from Southern California and includes a Cambridge cornucopia, Caprice 3 - lite candleholder and a Blenko bunny. Very pretty and thank you for sharing, Jennifer Waldeck. I remember the day you purchased the crystal cornucopia from the museum gift shop!



This beautiful Cambridge punch bowl set was ready for Easter. It is one of the largest made by The Cambridge Glass Company and the cups are raised and on stems. The factory number was 2660/338. Since we can't have friends over for punch, so why not use it a different way? #StaySafe #SupportLocalOhio



There are so many different decorations on the lids of the Cambridge 3599/57 8" 3 compartment candy box. A few decorations were recently shared on the Museum Facebook page. The Crystal etched Lorna candy box lid was shared by member Jan Borresen Hector.



# Alexa Now Serves as Your Personal Cambridge Glass Museum Docent

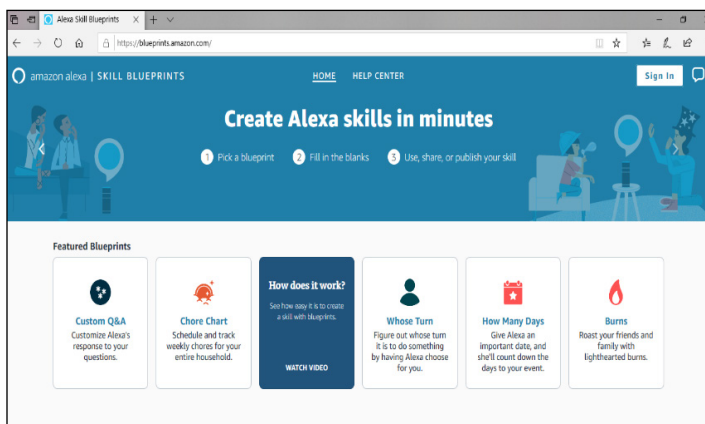
By: Jonathan Fuhrman

Whenever I have people over, it is usually for a dinner party. That means that while guests are arriving and mingling over cocktails, I'm usually in the kitchen checking on dinner, prepping the appetizers, and making the first course. That doesn't leave time to explain any of the glassware in my display cabinets.

Thankfully, I recently discovered I already have a docent on staff that just required a bit of training - Alexa!

Amazon recently released personalized features for Alexa, including custom responses to your inquiries or statements. With ease, you can now have her rattle off information when someone says "Alexa, tell me about the glass in the dining room." You can see an example of this I recently shared at [facebook.com/DepressionGlassGuy/videos/231218934791945/](https://www.facebook.com/DepressionGlassGuy/videos/231218934791945/)

If you own an Alexa, you can easily do this yourself. Simply visit [blueprints.amazon.com](https://blueprints.amazon.com) and sign in with your existing Alexa account. From there, select Custom Q&A. You'll be prompted to enter in custom questions/statements and the responses you'd like to hear. These then sync to your device and are ready to go in a matter of moments.



I have now done this for all of the cabinets in my house. I even created a few other amusing custom responses. "Alexa, how many sets of dishes does Jonathan own?" will get you a response of, "How rude! That is right up there with asking a lady her age or how much money someone makes. Shame on you! Have you no class?"

My only criticism of this feature is that you are limited to 750 characters of a response, which equals about 130 words, or 1 minute. While that seems like a lot, it doesn't

allow you to go into too much detail, especially when a 6 shelf cabinet has a different pattern on every shelf.

In order to make this feature functional with your guests, you will also need to develop a card of some sort to pass out with prompts of what they should be asking Alexa in each room they visit.

I hope others who own Alexa do this for your collection as well. And if you are a Google Home user, a similar feature exists for those devices.

*"Amazon, Alexa and all related logos are trademarks of Amazon.com, Inc. or its affiliates."*



## National Cambridge Collectors, Inc. Minutes of the March 13, 2020 Membership Meeting

This meeting was cancelled by the Board of Directors on March 11, 2020 to be compliant with the directive from the State of Ohio to cancel group gatherings.

Respectfully submitted,  
Nancy Misel  
Secretary



# Cambridge Curiosities

By Jack Thompson Chapter 5



Welcome to some of my whimsical observations of the wonderful world of Cambridge glass. Over time, we have come to realize there are so many interesting, strange and/or quirky things about this company and the beautiful products they made. Some may never be explained, but all are just plain fun to think about and explore. These are not meant to be things exhaustively researched; I'll leave that up to you readers or maybe Frank's column of *Only Questions – No Answers*. Let's just have some fun!

## #3400/38 or #3900/116 - Ball Jug?

This is an issue that has been bugging me for years. When we bought our first optic Ball Jug Etched Elaine, we assumed it was the #3400/38. It had the recognizable #3400 spikes in the design. But after further research, a conundrum was discovered. The #3400/38 shows up 7 times in the '30-34 catalog. Sometimes it is optic, sometimes it is not and sometimes it is hard to discern. Thereafter, up to and including the 1940 catalog, all images are non-optic, with the exception of the Gyro-Optic Line. In the 1949 catalog, the #3900/116 Ball Jug appears and the #3400/38 disappears. It is optic, as you would expect for the #3900 line. But the #3400 spikes are still there. In questioning ball jug experts, no one has ever seen a ball jug without the spikes.

The point of all this is, that if you have an optic ball jug that dates itself through color or decoration, you know which one it is. But in the case of our Elaine etched example, there seems to be no way to tell, since it was produced in both time periods. For some additional Ball Jug optic fun and information, see Jim Retzliff's interesting article in the 2012 October Crystal Ball.

## Sonata Candlesticks.

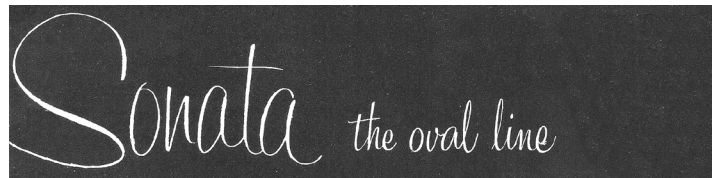
On many occasions, when you have a 1-Lite, 2-Lite or 3-Lite candlestick within the same line, they look very similar. They may only differ by a candle cup or two, such as Keyhole, Everglade, Pristine and Mount Vernon. Not with the Sonata Line. The 1-Lite and 2-Lite candlesticks look almost nothing alike. The Sonata Line, which was produced in the re-opening period during the mid-1950s, was subtitled "the oval line".



#3400/38, 80 oz. Ball Jug, Etched Elaine, Gold Edge



#3900/116, 80 oz. Ball Jug, Etched Rose Point, Optic



#1957/120, Sonata 2-Lite Candlestick



#1957/121, Sonata 1-Lite Candlestick, Carmen

The candlesticks do both have sort of an oval feature to them, so I'll give them that.



“**Obsession With Numbers**” section (a semi-irregular feature):

Rose Point collectors will sympathize with me on this one. When the company is so particular that when a worker creates a new piece by crimping it a different way they give it a new number and name, why does the #3900/124 - 7” 2-Compartment Relish have the same number whether its divider goes length-wise or width-wise? That is so out of character, and confused me the first time I encountered it. When originally introduced on page 39 of the 1949 catalog, the divider is length-wise. A couple of pages later on page 40B there is an image shown with the divider that appears to be width-wise and labeled “(revised)”. And in fact, on 6-1-1949 there was a mold order for “a new plunger to make the divider crosswise”.



#3900/124 - 7” 2-Compartment Relish, Etched Elaine



Until next time, share your enjoyment and enthusiasm of Cambridge glass!

jack1746@roadrunner.com

## In Memoriam

NCC is saddened to learn of the recent passing of Julia Wall, member #7462 since 2005. We send our thoughts and prayers to the family.

## WANTED

*Looking for Caprice in these colors:*  
Carmen, Crown Tuscan, Topaz, Mandarin Gold,  
Royal Blue, Violet, Amethyst

After reading a article in Crystal Ball August 1993  
by Mark Nye, now we are on the hunt!  
timothycrose9408@gmail.com or 309 224 9408  
Tim and Nancy Crose

## 21<sup>st</sup> ANNUAL ELEGANT AND DEPRESSION GLASS SHOW AND SALE JULY 18-19, 2020

In the *NEW EXPO-2 BUILDING*  
at THE FAIRGROUNDS NASHVILLE  
GPS ADDRESS: 500 Wedgewood Avenue  
NASHVILLE, TN 37203

SATURDAY HOURS - 10 AM TO 5 PM  
with Guest Speaker at 1 PM

SUNDAY HOURS - 11 AM TO 3 PM

\$6 ADMISSION – GOOD FOR BOTH DAYS  
\$5 FAIRGROUNDS PARKING

FEATURING VINTAGE  
AMERICAN-MADE GLASSWARE  
DEALERS FROM ACROSS THE COUNTRY

SHOW INFORMATION: (615) 856-4259

Email: fostoria\_tn@bellsouth.net

www.fostoria-tennessee.com

www.facebook.com/fostoriaglass.tn

HOSTED BY FOSTORIA GLASS SOCIETY OF TENNESSEE

Welcome to the eBay Report, featuring Cambridge glass items that sold on eBay circa mid-March, 2020 to mid-April 2020. Selling prices have been rounded to the nearest dollar. If no color is mentioned, assume that the piece or part of it being discussed is crystal. If I refer to an auction as "incognito," that means that the seller did not know he or she was offering Cambridge glass, and didn't list the item in one of the Cambridge glass categories. Here we go:

### Animals and Figurals

A #1191 Cherub Candlestick won hearts for \$75. A small covered bunny box (no fur detail) with original label hopped away for \$140.



### Statuesque (Nude Stem) Items

A Royal Blue 6-3/8 inch claret sold for an even hunderdbux. A claret with an optic bowl in Heatherbloom brought \$155.

### Etched Tableware and Stemware

A #611 Decagon 2-1/2 inch footed nut in Gold Krystol etched Cleo sold for \$55. Speaking of Decagon footed nuts, a set of ELEVEN #611's in Willow Blue sold for \$24. That's barely more than \$2 apiece. Sure, they weren't etched, but what a steal.



A #3115 4-5/8 inch footed tumbler in Topaz with Willow Blue foot, etched Rosalie, sold for \$45. The company sure got creative with some unexpected color combinations in the 1920s.



### Gold, Silver, and Enamel Decorations



A #525 cocktail shaker in the early pale Amethyst of the 1920s, sporting a sterling silver deposit decoration of golfers, but sans metal lid, sold for \$40 in an incognito listing.

An almost-complete #880/8701 5-piece bridge set in Willow Blue, the tumblers etched and gold encrusted Hunt Scene, and the details of the stand highlighted in gold, sold for \$95.

The tray has the keyhole handle, and the hearts, spades, clubs and diamond designs on the corners. That had to have been a Buy It Now price. It will be a chore trying to find a fourth tumbler to complete the set, but hey, that's what the internet is for, right?



A pair of Amber #646 single light keyhole candleholders (round base) etched and gold encrusted Wildflower blossomed for \$95.



A #304 spherical 4-1/2 vase in Helio with an etched and gold encrusted band along its equator sold for \$116.

An Ebony #607 cigarette box etched Pointer with the design gold-filled showed the way for \$120.



An Ebony #3450 Nautilus 9 inch footed vase with lovely fanciful silver overlay sold for \$150 Buy It Now in an incognito listing.

A #1324 decanter fitted with a Golf Ball stopper, matched with 5 small flat #8151 2-1/2 ounce tumblers, all decorated with black and orange horizontal rings, sold for \$225.

A #1228 pillow vase in Crown Tuscan with gold encrusted Portia etching was put to bed for \$260.



### Miscellaneous

Normally my editor discourages me from reporting on items that sold for a pittance. However, I'm going to insist that my readers see the single Peach Blo #3300 Moderne line shaker with glass lid that sold for \$8 and change. This is that pattern with the flat panels that come to a point at the top. The most-often seen piece in this line is the individual cream & sugar. It's not the most *exciting* Cambridge pattern, but go ahead, look at pages 65-66 of the 1927-1929 catalog reprints. It's a large line that features all kinds of pieces, and it ought to be better appreciated than it is.



Last month I reported on a pair of 1950s "Modern" line "parapet top" candleholders in Smoke. Shortly after those sold, a crystal pair with original labels on the foot of each

mustered only \$18.

Someone heeded my exhortation to purchase the metal spigot for the Cambridge Keg set, which found a new home for \$26. You'll thank me someday... unless you already HAD a keg minus the spigot, and needed no encouragement from me to complete your set.



A footless vase shaped like the top of a bud vase or one of the Cambridge epergne vases, etched Portia and set in a fancy gold-tone filigree metal base, sold for a very reasonable \$39.

Speaking of parts, a 3-footed base for a bowl or lamp in Azurite sold for \$41. Interestingly, it had a hole in the center, suggesting that that makes it a lamp base. Readers, can you tell me what this would have gone with?



A #1017 Card Table Corner Tray in Light Emerald Green sold for \$35 in an incognito listing. Another seller had the identical item, with a Buy It Now price of exactly one penny less than the other one, and accurately listed. Several weeks later, it, too sold. I'm searching high and low for one of these in Ebony... AND a pair of flat tumblers etched Vichy to go in it. A guy can dream, can't he?

Another seller offered the #1017 in PeachBlo, paired with two #3051 cone-shaped footed tumblers etched Golf scene. Somehow I envisioned Cambridge intending that this tray be used for cylindrical-shaped tumblers, but I guess anything is possible. The set sold for \$111.



A #169 3-piece mayonnaise set with ladle in Helio was scooped up for \$66.

A #783 10" vase in Amethyst etched #724 sold for \$71.



A Gold Krystol bud vase set in a filigree brass ormolu holder, etched Apple Blossom, bloomed for \$79.



A #38 Everglades 10-1/2 inch footed vase in Willow Blue rose from the swamps for \$79. A pair of Heatherbloom #3400/656 single candleholders with keyhole stem sold for \$95.

A pair of #1402/80 Tally Ho 6-1/2 inch candleholders in Royal Blue also sold for \$95. I just never see these in color, so I was shocked that they didn't garner more.



A #1305 10 inch keyhole stem vase with Carmen top sold for the opening bid of \$130. Seeing this reminded me of the time I found one in Royal Blue, probably 20 years ago. I was at a flea market, and spied it on a table. The sellers had no other glass, no other antiques -- just new items, and this. I approached, picked it up, looked it over, and asked the seller, "How much is this?" He shrugged and replied, "I dunno... a dollar?" I paid my dollar and skedaddled!



A #1066 Aurora footed ivy ball etched Rose Point sold for the opening bid of \$150.



A Sea Shell #42 8 inch flower center in Royal Blue sold for \$275.

A #119 basket in Rubina was carried away for \$200. It had a fairly well-developed color range, but weighted toward the red and Amberina. The green portion was just at the bottom of the basket, and there was only a bit of blue on its very bottom. I describe this, not to be a nitpicker, but just to be accurate. It's not like there are a lot of these floating around to choose among.



A samovar in one of the less-often seen shapes, in Topaz with etching #739, was offered at least twice, before finally garnering the \$300 opening bid. This one came with 5 blown cups set in silverplated holders, most of which were in shoddy condition, but the samovar itself seemed decent. As I've said before... if only these pieces had been made with **quality** metal work!

### Correction

The Statuesque covered sweetmeat I reported on in last month's issue was Amethyst, rather than Carmen. I did not catch my error in time for it to be corrected in the print edition of the Crystal Ball, but my editor fixed it in the pdf edition that is sent out via email.

An avid reader pointed out that the prism sign I reported on last month was Amber, not Carmen. The prism sign is not known in that color. However, a plexiglass reproduction of these signs can be found in red, cobalt, yellow, amethyst, and ivory colors that are close to Cambridge colors.

That's it for now. If you see any interesting Cambridge glass on eBay that you think I should be watching or reporting on, or if you have any other input, feel free to contact me at [LAGlass@pacbell.net](mailto:LAGlass@pacbell.net). I am well aware that I don't catch every interesting listing, especially those that turned up in a category other than Cambridge. Until next time, happy Cambridge hunting!

# NCC Members Attend February 2020 Shows

As you'll see in the pictures below, several NCC members were found at the Clearwater Florida show on Saturday February 8. Then a week later, a slightly different group was found at the Texas Houston show. Everyone reported seeing a good variety of Cambridge glass items at both shows.



## Florida Clearwater Show

Back row (L-R): Jack Thompson, Freeman Moore, David Adams, Joe Miller  
 Front row (L-R): Elaine Thompson, Linda Adams, Lynn Welker, Linda Roberts, Barbara Wyrick, Sharon Miller, Jeannie Moore

*Clearwater*  
**Elegant & Depression**  
**Glass Show & Sale**  
 February 8-9, 2020

Sat. 10 am to 4:30 pm; Sun. 11 am to 3 pm

**NEW LOCATION: Morningside Recreation Complex**  
 2400 Harn Blvd., Clearwater, FL

*Featuring American made glassware and pottery.*  
 Dealers from across the country

Admission: \$7.00; \$1.00 off with card or ad

Directions: from north - US 19S to Seville Rd./Harn Blvd. exit. Follow signs for Harn Blvd. from south - US 19N to Seville Rd. exit. Follow signs to Seville Rd. then to Harn Blvd. Harn Blvd. is also accessible at traffic light off Belcher Rd. between Gulf to Bay Blvd. & Nursery Rd. in Clearwater, FL

**Show Information:**  
 (860) 614-7133

*Thank You* to promoters  
 Ray Mahoney and Max  
 Miller for allowing NCC to  
 have membership available  
 on the information table.

**THE HOUSTON GLASS SHOW & SALE**  
**THE GLASS EVENT OF THE YEAR**  
 National dealers offering the *Rarest and Best*  
 Glass, Pottery, and China from 1890-1980

PLUS  
**THE BEST LITTLE ANTIQUE SHOW IN TEXAS**

**FEBRUARY 15 & 16, 2020**  
 Saturday 10:00 a.m. – 5:00 p.m. Sunday 10:00 a.m. – 4:00 p.m.  
**FT. BEND COUNTY FAIRGROUNDS** – Rosenberg, Texas  
 Hwy. 59 South from Houston, 30 minutes to Hwy. 36 – Turn Left  
 Admission: \$6.00 good both days

**FRIDAY NIGHT PREVIEW & SALE!!**  
**FEBRUARY 14, 6:00p.m. – 9:00p.m.**  
 Preview admission is \$15.00 per person  
 Preview tickets available at the door or by calling 713-410-4780

Website: www.maxmillerantiques.com  
 FOR SHOW INFORMATION CONTACT  
 Max Miller 713-410-4780 or Richard Theiss 214-734-7216  
 Email: MMXGLASS@aol.com

GLASS REPAIR ON SITE FREE PARKING GOOD FOOD

Linda Adams seems happy to be holding a Crown Tuscan Seashell #16 comport with Rockwell Sterling Silver “Seahorse” decoration.



## Texas Houston Show

Back row (L-R): Freeman Moore, David Adams, Jack Thompson, Scott Pierce, Brady Boudreaux  
 Front row (L-R): Max Miller, Jeannie Moore, Norman Woodson, Linda Adams, Suzanne Chamberlain, Gwenell Pierce, Elaine Thompson

# For Sale - NCC Books and DVD

Published by NCC • Members receive a 10% discount

TITLE		REGULAR PRICE	MEMBER PRICE
1910 NearCut Catalog Reprint	108 pages, paperback, no price guide	\$14.95	\$13.45
1927-29 Catalog Reprint	66 pages, paperback, no price guide, includes identification guide	\$9.95	\$8.95
1930-34 Catalog Reprint	250 pages, paperback with 2000 price guide	\$14.95	\$13.45
1930-34 Catalog Index	Index for above	\$2.00	\$1.80
1949-53 Catalog Reprint	300 pages, paperback, no price guide	\$19.95	\$17.95
Cambridge Colors II (New)	Hardcover with price guide	\$19.95	\$17.95
Cambridge Rose Point – A Collector's Guide		\$29.99	\$27.00
Caprice	200 pages, paperback, no price guide	\$19.95	\$17.95
Decorates	136 pages, paperback, no price guide	\$14.95	\$13.45
Etchings (2nd Edition)	102 pages, paperback, no price guide	\$17.95	\$16.15
Etchings, Non-Catalogued	70 pages, paperback, no price guide	\$12.95	\$11.65
Etchings: Blossomtime	26 pages, paperback, no price guide	\$7.95	\$7.15
Etchings: Candlelight	30 pages, paperback, no price guide	\$7.95	\$7.15
Etchings: Chantilly	44 pages, paperback, no price guide	\$7.95	\$7.15
Etchings: Diane	53 pages, paperback, no price guide	\$7.95	\$7.15
Etchings: Elaine	64 pages, paperback, no price guide	\$9.95	\$8.95
Etchings: Portia	57 pages, paperback, no price guide	\$7.95	\$7.15
Etchings: Wildflower	42 pages, paperback, no price guide	\$7.95	\$7.15
Rock Crystal Engravings	119 pages, paperback, no price guide	\$17.95	\$16.15
Rock Crystal Engravings (Listings)	Companion to above; lists all pieces in all patterns	\$9.95	\$8.95
Rock Crystal 1940 Illustrated Catalog & Price List		\$14.95	\$13.45
Rose Point - Second Edition	146 pages, paperback, no price guide	\$19.95	\$17.95
Pharmaceutical Catalog No.8 1915-1920 Reprint	68 pages, paperback, no price guide	\$9.95	\$8.95
Cambridge Arms compendium		\$7.95	\$7.95
1916 General Catalogue		\$13.95	\$13.95
Rose Point Program - DVD (Postage \$3.00)		\$19.95	\$17.95
Caprice Program - DVD (Postage \$3.00)		\$19.95	\$17.95

## How to Order by Mail or from the NCC Website

Send orders to:  
NCC • PO Box 416 • Cambridge, OH 43725

OHIO RESIDENTS PLEASE ADD 7.25% SALES TAX

SHIPPING:  
\$5.00 FOR THE FIRST PUBLICATION  
\$1.00 FOR EACH ADDITIONAL ITEM

Please include your name, complete mailing address and your phone number or e-mail address.

Payments by check or Money Order only, payable to NCC

Books may also be purchased on the NCC website,  
[www.cambridgeglass.org](http://www.cambridgeglass.org).

Major Credit Cards are only accepted for web purchases.



## NCC Events

~~2020 NCC Convention~~

~~June 24-27, 2020~~

\*\*\*\*\*

2020 Fall Meeting

Friday October 23, 2020

\*\*\*\*\*

2020 Auction - rescheduled

Saturday October 24, 2020

### Member Benefit

Each NCC household is allowed one free 20-word classified ad in the Crystal Ball per calendar year as part of their membership. This can be a "For Sale" or "Wanted" type of classified ad. Submit your ad by email to [editor@cambridgeglass.org](mailto:editor@cambridgeglass.org)

## CLASSIFIEDS

**Wanted:** Mount Vernon #9 1 lb. Covered Candy Jar in Forest Green for Hubby's birthday. Contact [Jeannie\\_Moore@verizon.net](mailto:Jeannie_Moore@verizon.net)



*Let's Retain and Recruit new members*

NCC welcomes the following new members

James Wolf	CA
James Zuber	CA

*Only you can help us grow*

Please check the status of a show before making a trip.

**Glass Shows**

#### June 20-21, 2020

Tiffin Glass Collectors Club 35th annual Artistry in American Glass Show and Sale  
Tiffin Middle School / 103 Shepherd Dr.  
Tiffin, OH  
<https://www.tiffinglass.org/>

#### July 11-12, 2020

National Duncan Glass Society Annual Show & Sale  
Washington County Fair Grounds / 2151 N. Main St  
Washington, PA 15301  
<http://www.duncan-miller.org>

#### July 18-19, 2020

21st Annual Elegant and Depression Glass Show & Sale  
EXPO-2 Building / The Fairgrounds  
500 Wedgewood Ave  
Nashville, TN 37203  
<http://www.fostoria-tennessee.com/>

#### July 25-26, 2020

Peach State Depression Glass Club  
44th Vintage and Collectible Glass Show  
Cobb County Civic Center / 548 So. Marietta Pkwy.  
Marietta, GA 30060  
<http://www.psdgc.com>

#### July 25-27, 2020

National Fenton Glass Society Annual Convention  
Quality Inn / 700 Pike St  
Marietta, OH  
<https://nfgs.org/Events.php>

#### August 7-9, 2020

Fostoria 40th Annual Convention Show & Sale  
Moundsville Center Building / 901 Eighth St.  
Moundsville, WV 26041  
<http://www.fostoriaglass.org/>

#### August 15-16, 2020

Houston Glass Club 46th Vintage Glass & Antique Show & Sale  
Fort Bend County Fairgrounds  
Rosenberg, TX  
<http://houstonglassclub.org>

#### August 22-23, 2020

Summer Metroplex Looking Glass Show  
Grapevine Convention Center / 1209 S Main Street  
Grapevine, TX 76051  
<http://meyershows.com/metroplexaugust.php>

# DEALER DIRECTORY

Dealer Directory - \$24 for 12-months, size limited by box (see below). Includes listing on NCC website. Electronic submissions should be emailed to: [editor@cambridgeglass.org](mailto:editor@cambridgeglass.org)

## Advertising Rates:

1/8 page \$15      1/4 page \$20  
 1/2 page \$30      Full page \$50

Mailed submissions and all payments should go to PO Box 416, Cambridge, OH 43725. Deadline is 10th of preceding month. Ads must be paid in advance. Show listings are FREE; send info to PO Box or e-mail address 60 days before event.

<p style="text-align: center;"><b>Max Miller</b>  <b>Elegant American Glassware</b>  <a href="http://www.maxmillerantiques.com">www.maxmillerantiques.com</a></p> <p>The Market Place              10910 Katy Freeway.      713-410-4780              Houston TX 77043      <a href="mailto:mmxglass@aol.com">mmxglass@aol.com</a></p>	<p style="text-align: center;"><b>ISAACS ANTIQUES</b>              (740) 826-4015</p> <p style="text-align: center;"><i>↔ located in ↔</i>  <b>Penny Court Mall</b>              637 Wheeling Ave              Cambridge, OH</p>
<p style="text-align: center;"><b>Glen &amp; Carolyn Robinson</b>  <b>White Rose Antiques</b>              Specializing in Depression Era Glassware</p> <p style="text-align: center;"><b>2454 McFarland Road</b>  <b>York, SC 29745</b></p> <p>803-684-5685  <a href="mailto:gandcrobinson@aol.com">gandcrobinson@aol.com</a>  <a href="http://whiteroseglassware.com">whiteroseglassware.com</a></p>	<p style="text-align: center;"><b>MARGARET LANE ANTIQUES</b></p> <p style="text-align: center;"><b>2 E. Main St. New Concord, OH 43762</b>              Lynn Welker      (740) 705-1099</p> <p style="text-align: center;">Cambridge Glass Matching Service              Hours: Mon-Fri 10-12 AM, 1-5 PM              or by appointment</p>
<p style="text-align: center;"><b>CRYSTALLINE COLORS</b>  <i>Cambridge • Fostoria • Elegant Glass</i>              Penny Court Mall, Cambridge - 2 booths              Medina Antique Mall              Medina, OH (I-71, exit 218)</p> <p style="text-align: center;">Lynne R. Franks    216-661-7382</p>	<div style="border: 1px solid black; padding: 5px;">  <p style="text-align: center; background-color: #4b0082; color: white; padding: 2px;"><b>Connecting Buyers &amp; Sellers!</b></p> <p style="text-align: center; background-color: #4b0082; color: white; padding: 2px;">Tell us what you are looking for and we help find it.</p> <p style="text-align: center; background-color: #4b0082; color: white; padding: 2px;"><b>CAMBRIDGE GLASS.US</b></p> <p style="text-align: center; background-color: #4b0082; color: white; padding: 2px;">P. Snyder 740-601-6018</p> <p style="text-align: center; background-color: #4b0082; color: white; padding: 2px;">E-Mail and Find Your Glass!</p> <p style="text-align: center; background-color: #4b0082; color: white; padding: 2px;"><a href="mailto:psnyder@cambridgeglass.us">psnyder@cambridgeglass.us</a></p> <p style="text-align: center; background-color: #4b0082; color: white; padding: 2px;"><a href="http://www.cambridgeglass.us">www.cambridgeglass.us</a></p> <p style="font-size: small; text-align: center;">E-Blast</p> <p style="font-size: x-small; text-align: center;">When you are searching for Cambridge glass, email your request and it is emailed to all members and dealers.                  P. Snyder, 1500 Edgewood Dr., Circleville, Ohio 43113</p> </div>
<p style="text-align: center;"><b>CRYSTAL LADY</b>              1817 Vinton St.      Omaha, NE 68108  <b>Bill, Joann and Marcie Hagerty</b>              402-699-0422</p> <p style="text-align: center;">Specializing in Elegant Glass &amp; Collectibles  <a href="http://www.crystalladyantiques.com">www.crystalladyantiques.com</a></p>	<div style="border: 2px solid red; padding: 10px; text-align: center;"> <p style="font-size: 1.2em; margin: 0;"><b>Our House Antiques</b></p> <p style="font-size: 0.9em; margin: 0;">Linda and David Adams                  Las Vegas, Nevada                  702-302-8282</p> <p style="font-size: 0.8em; margin: 0;"><i>Shows and Mail Order only</i></p> <p style="font-size: 0.8em; margin: 0;">email: <a href="mailto:David@OurHouseAntiques.com">David@OurHouseAntiques.com</a></p> <p style="font-size: 0.8em; margin: 0;"><a href="http://www.OurHouseAntiques.com">www.OurHouseAntiques.com</a></p>   </div>



National Cambridge Collectors, Inc.  
PO Box 416  
Cambridge OH 43725  
email: [editor@cambridgeglass.org](mailto:editor@cambridgeglass.org)  
website: [www.cambridgeglass.org](http://www.cambridgeglass.org)



## Friends of Cambridge – Annual Fund

NCC exists through member giving using an Annual Fund system to raise operating funds and to ensure the preservation of Cambridge glass for future enthusiasts. The Annual Fund uses a common member “renewal” date and NCC sends out Annual Fund materials to everyone once a year. There are no monthly reminders or monthly renewal dates. The Annual Fund is NCC's primary means of support and all Annual Fund gift recognition levels are per household and include membership for all adults within the household. Additionally, each household will receive a subscription to the Crystal Ball newsletter, unlimited admissions to the museum, and rights to vote in elections for the Board of Directors. Multiple households at the same address are welcomed. NCC is a 501(c)(3) organization and Annual Fund gifts are allowed as a tax deduction under Section 170 of the Internal Revenue Code.

### Levels of Membership

Patron	\$35
Benefactor - Century	\$100
Benefactor - Mardi Gras	\$200
Benefactor - Japonica	\$500
President's Circle	\$1,000

President's Circle includes Convention registration for two members in the household and one copy of any new NCC publications.

## *The National Museum of Cambridge Glass*

Located at 136 S. 9th Street  
in downtown Cambridge

