



Cambridge Crystal Ball

Published by the National Cambridge Collectors, Inc. as a resource which informs, invites and inspires people to encourage the continued preservation of the glass produced by the Cambridge Glass Company of Cambridge, Ohio for future generations.

Issue No. 534

ISSN 2474-5987

January 2020

IT'S AUCTION TIME!

by Bev & Will Acord

We are excited about the wonderful selection of Cambridge glass in this year's auction to be held on Saturday, March 14, 2020 at the St. Benedict Gymnasium. The preview begins at 8:30 a.m. and the auction starts promptly at 9:30 a.m. **Note the change in date and location.**

You can review the catalog included in this issue. You can also go online to view all the great photographs. We have a fantastic collection of group shots as well as individual shots of each lot.

We began preparations for the 2020 NCC Auction in August when consignors sent us their proposed lists. In order to limit the auction to one day we narrowed the selection to 405 items. This is one of the hardest parts of the process as there was so much wonderful glass to choose from. Those items that were not selected please hold until next year!

We utilized our yellow house next to the Museum to unpack, photograph, sort into auction order and repack the glass for safe storage and later transport to the auction. We would like to thank those who helped in making this very important auction preparation go smoothly: Larry and Susan Everett, Frank and Vicki Wollenhaupt, David Rankin and Lynn Welker. This is not easy work; we really could not do without you.

And to all those who have so graciously offered their help and support for all the work it will take setting up the auction and working auction day, thank you as

well. And thanks to the consignors who provided all the wonderful glass.

So start making your selections of the items you are going to bid on now! Make your hotel reservations right away to join us for the auction, March 14th 2020 as well as the Friday night quarterly meeting and "Auction Preview" presented by Lynn Welker on March 13th. If you can't join us in person, make sure to send in your bids so they arrive in time to be considered.

This is one of NCC's most important fund raising activities. See you at the auction!



What's Inside

It's Auction Time!	1
President's Message	3
Museum 2019 - A Very Successful Year!	4
2020 Benefit Auction Information	8
2020 Benefit Auction Listing.	9
Cambridge Curiosities	17
more photos from the Fall 2019 meeting	19
eBay Report	20

National Cambridge Collectors, Inc.

PO Box 416 Cambridge, OH 43725-0416

Board of Directors

	2020	
Cindy Arent	Larry Everett	Sharon Miller
	2021	
Ken Filippini	Freeman Moore	Lyle Stemen
	2022	
Julie Buffenbarger	David Rankin	Frank Wollenhaupt
	2023	
Nancy Misel	Lindy Thaxton	Lynn Welker

Officers

President	Freeman Moore
Vice-President	Ken Filippini
Secretary	Nancy Misel
Treasurer	Lindy Thaxton
Sergeant-at-Arms	Larry Everett

Director of Strategic Planning	Ken Filippini
Director of Human Resources	David Ray
Chair, Endowment Committee	David Rankin

MEMBERSHIP QUESTIONS?

Please send address changes to:

Membership - NCC

PO Box 416

Cambridge, OH 43725-0416

or by e-mail to:

membership@cambridgeglass.org

Member Services

Vice President

Member Relations
Convention
Member Social Media
Glass Dash
Glass Show
Study Groups
Webmaster

Freeman Moore (acting)
Freeman Moore, Membership Database
Larry & Susan Everett
Alex Citron & David Ray
Larry Everett & Frank Wollenhaupt
David Ray, Mike Strebler, Jack Thompson
Jeannie Moore, Study Group Coordinator
David Adams

Development

Vice President

Campaigns

Events

Projects
Publicity

Julie Buffenbarger
Ken & Jane Filippini, Annual Fund Directors
Larry Everett, Director of the Heritage Society
Bev & Will Acord,
Lynn Welker, Auction Managers
Susan Everett & Frank Wollenhaupt, Jewelry
Convention: Jonathan Fuhrman

Education

Vice President

Crystal Ball
Publications
Media Productions
Research

Larry Everett
Freeman Moore, Executive Editor
Mark Nye, Director of Publications
Dave Rankin, Director of Media Productions
Mark Nye, Archivist

Museum

Vice President

Public Operations
Facilities & Grounds

Inventory Management
Collections
Museum Gift Shop

Archivist
Museum Social Media
Community Relations

Cindy Arent
Lindy Thaxton, Director of Public Operations
Cindy Arent,
Joe Miller,
Lindy Thaxton
Lindy Thaxton, Director of Inventory Management
Lynn Welker, Director of Collections
Cindy Arent, Gift Shop Manager
Lynn Welker, Gift Shop Manager
Mark Nye, Director of Archives
Cindy Arent, Director
Cindy Arent

Administration

Vice President

Accounting & Finance

Lindy Thaxton
Lisa Neilson, Office Manager



CONTACT US

NCC Business Manager

Phone: 740 432-4245

businessmanager@cambridgeglass.org



Freeman Moore, President

e-mail: president@cambridgeglass.org

Nancy Misel, Secretary

e-mail: secretary@cambridgeglass.org

Heritage Society

Ensuring the preservation mission of the NCC through planned giving and estate bequests.

Members of The Heritage Society are those who have included the NCC in their wills or estate plans, thus providing the organization with a secure future.

The mission of The Heritage Society is to foster smart estate planning and to assure that NCC is not forgotten as an important beneficiary. Any pledge is meaningful and appreciated.

All Cambridge collectors - both current and future - will benefit from, and be grateful for your support.

Let us know how we can help with your future plans.

Museum:

National Museum of Cambridge Glass



Like us on Facebook

Member: Cambridge Glass/National Cambridge Collectors

NCC Website: www.CambridgeGlass.org

Miami Valley Study Group Website: www.mvsg.org



PRESIDENT'S MESSAGE

A New Year

You're probably reading this in January during a quiet spell after the holidays. Don't worry, it won't stay quiet for very long. March will soon be here and that brings the excitement of our NCC Annual Benefit Auction. Bev Acord and her team had a busy fall getting everything ready. Peruse the listing in this issue, and look at the pictures online. We'll include photos next month if you're not able to see the pictures online. If you can't attend in person, consider placing a mail bid.

January also begins a new cycle of glass shows, starting with the Cartersville Georgia show and then continuing to Florida. February gets busy with shows in Florida, Texas, California and Washington. If possible, make time to visit a show, talk with dealers, talk with other collectors, and most importantly, encourage new collectors to get involved in learning about the variety of items made by the Cambridge Glass Company. We need to plant the seed, and then encourage growth. Of course, you should also plan a trip to Cambridge in late June. Let me know if you need any printed materials to share with others when you attend a show.

Be active and engage with other collectors on social media. Facebook™ is the most popular site. If you use other social media, let us know. Cindy Arent shares information about the latest happenings at the museum. David Ray is working on the member focused Facebook page and sharing information such as "Cambridge 101" and explaining basic glass concepts.

In early December, Jeannie and I made a road trip from Dallas Texas to Wellington Kansas to help the National Depression Glass Association (NDGA) celebrate the Grand Re-Opening of their museum. Only a few months earlier in July 2019, the facade of the building that housed the NDGA National Glass Museum came crashing down, covering the sidewalk with brick and window glass debris, along with a steel beam which weakened the building. It was quickly determined that a new location was needed. They were extremely fortunate

to find a larger location only one block away. From July to December, volunteers were busy completing renovations and moving everything to be ready for December 7th Grand Re-Opening. Our congratulations to a fellow glass museum and organization on this task. For our members who have joined since 1998, NCC was presented with a similar challenge when our previous museum on highway 40 flooded with about 6 feet of water in June 1998. Our members rallied to save the contents, and then began the process of finding a new location. The result is our remarkable National Museum of Cambridge Glass located at 135 S 9th Street. Hat's off to previous members who had the vision that resulted in what we have today and to those who continue to ensure we have an outstanding museum.

You can always help. We have a lot of members in Ohio, but the majority of our members are scattered across the country, including Canada and Japan. We're always looking for volunteers to help with tasks. Some of our volunteers have been doing the same tasks for years, and could use some help. I would really like to encourage some of our younger members to help out. Supporting NCC is like supporting any other arts organization.

Every year you elect three members to the board of directors. The slate of candidates will be approved at the March meeting. David Ray is the chair of the nominating committee and would welcome suggestions..

What's coming?

Auction!

I'm sure many of us decorated tables with Cambridge glass. Please share your pictures with editor@cambridgeglass.org for inclusion in the Crystal Ball.

What's on your Cambridge "wish list" for this year, and how can we help?

Sincerely,

Freeman Moore
president@cambridgeglass.org

Museum 2019 - A Very Successful Year!

By Cindy Arent

It's hard to believe it has been fourteen years since we decided to be open limited hours for the holidays to coincide with Dickens Victorian Village in downtown Cambridge. The first year we had to dress in our Victorian costumes and walk downtown handing out museum brochures to attract visitors. Each year we have had more visitors and bus tours. The 2019 Museum's holiday season was very successful! We met so many new friends and reconnected with visitors that return each year. For many visitors, it has become an annual tradition. The theme for the museum holiday season was "Christmas at the Glass House".

During November and December, twenty four bus groups toured the museum from Ohio, Pennsylvania, New York, Illinois, Michigan, Indiana and even two motorcoach groups from Canada. Many thanks to Bev Kerr, Dickens Victorian Village Group Tour Coordinator, for her outstanding efforts in scheduling these national group travel companies and to our museum volunteers that met each bus with enthusiasm and smiles on their faces. It isn't easy to handle a group of 55 people inside the museum and give personal attention to each person; it takes team work and practice.

The holiday season began with Good Day Columbus host Cameron Fontana visiting the museum. Yes, we were "Live" on FOX 28 Columbus during the three segments. Cameron loved the museum and we have had many positive comments. In addition to the comments,

visitors mentioned that they had seen us on Good Day Columbus!

A few days later, we held the Vintage Appraisal Fair in the museum auditorium. Lynn Welker appraised many items that were brought in by people from the surrounding area.



The Vintage Appraisal Fair was held at the museum in November. Lynn Welker is shown appraising items brought in by Max and Karen Treier.



Shown left to right; Lindy Thaxton, Cindy Arent, Cameron Fontana as the Cambridge Glass Blower and Sharon Bachna.

The Annual Holiday Open House was held on Friday and Saturday of Thanksgiving weekend and was very well attended. At one point, I don't think we could have handled one more person and gift shop sales were great. The following day was Shop Small Saturday. Many thanks to Cambridge Main Street for giving us Shop Small tote bags, balloons and stickers to give to Open House and Shop Small Saturday visitors.

NCC member and writer, Bev Kerr, wrote an article about the Cambridge Glass Christmas ornaments for The Daily Jeffersonian. Bev visited our workshop in Lindy Thaxton's basement to photograph the process. As a result of Bev's article, we sold and shipped even more ornaments. Cambridge Ornament sales reached \$4000 this year!

As the dust settles from 2019 and the holiday season, plans are well underway for 2020. The museum theme will be the Roaring 20s and Prohibition with new exhibits planned.

Happy New Year! We hope to see you in Cambridge in 2020 and thank you so very much for your continued support.



Many thanks to NCC members Bret Price and Charles Tandy for helping clean up the fall leaves around the museum.



We recently received a ledger with the minutes of the American Flint Glass Workers Union (Local #89) from the Cambridge Glass Company. Many thanks to the Klass family for donating another piece of Cambridge history! Their father and grandfather are in the photograph of the factory mold shop to their right. (L-R) Paula Klass and Karen Klass Addis are shown with the AFGWU ledger.



The Orme girls visited the museum in November, it has become a tradition each year! Shown left to right are: Mindy Orme, Jennifer Orme-Zavaleta, Pam Orme Wasylik and Amanda Wasylik Geer. Of course they are holding their Cambridge stemware and standing in front of the factory mural of the company once owned by their family.



Marlee Reardon (daughter of museum docent Bob Reardon) and her friend Joe helped get the museum ready for Shop Small Saturday. Thank you for visiting!



Ready to greet visitors on our biggest day of the year are left to right: Lindy Thaxton, Cindy Arent, Sharon Bachna, Joey Pirl, Sandi Rohrbough and Sharon Miller. Other volunteers helping with the three large motorcoach groups that day were: Sally Slattery, Betty Davis, Margene Osterberg, Kat Bennett and Reggie Gerko. The day went very well and we had many great comments from the group leaders and visitors! Most were amazed that a group of volunteers could successfully manage such large groups throughout the day.



Museum volunteer and NCC member, Kat Bennett, is now an expert in using the Cambridge Arms Line. Kat is shown teaching visitors about the 101 ways to give your table a new look!



A table decorated for holiday entertaining.

Send in pictures showing how you decorated with Cambridge glass for the holidays.

Charles Upton

A Tribute by Mark Nye



To those NCC, Inc. members who have joined in the past few years, the name Charles Upton may not mean a great deal. Yes, they may have heard of Charles and that he was a long time member of NCC, Inc. and played a role in the organization but how many members today know the full story.

From an article that appeared in Issue No 1 of the “Cambridge Crystal Ball,” written by the late Evelyn Allen, comes this excerpt: “About three years ago, Charles Upton and John Wolfe, who are very avid Cambridge Glass Collectors, started talking NATIONAL CLUB.” The two of them talked to many collectors, some encouraging and some feeling it could never be...At a Columbus (Ohio) show in the Fall of 1972 Charles walked into “Ruth Forsythe’s booth and Ruth remarked – “When, Charlie, are you going to start a National Club?” This was the spark at the right moment.”

The first organizational meeting (of what was to become the National Cambridge Collectors) was held at the home of Charles and Mary Alice Upton on February 11, 1973.

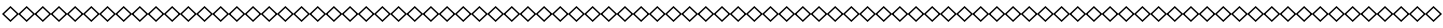
Mary Alice had fixed a very lavish dinner...it was served on beautiful Cambridge Rosepoint dinner ware.” Thus were the beginnings of NCC, Inc. at the home of Charles and Mary Alice Upton. At this meeting, in addition to the Uptons we had Harry and Evelyn Allen, Bob Coyle and John Wolfe.

On March 5, 1973 the first National Cambridge Collectors Board of Directors met and Charles Upton was elected the first President of NCC Inc. Later Charles served as vice-president and at the time of the 1998 flood that destroyed the original NCC, Inc. museum, he was serving as he NCC, Inc. treasurer. Following his tenure as treasurer, Charlie retired from active participation in NCC, Inc. management and assumed the role of an elder statesman.

Without Charles, better known to many as Charlie, would we have NCC, Inc. today?

Charles Upton did pursue his dream of a national organization and today the National Cambridge Collectors Inc. is an active national collectors’ organization, a vibrant member of the Cambridge, Ohio community and owns and operates a nationally known museum dedicated to showcasing the output of the Cambridge Glass Company.

Thanks and Rest in Peace Charlie. ■



Clearwater

New Location *Elegant & Depression* **New Location**
Glass Show & Sale

February 8-9, 2020
Sat. 10 am to 4:30 pm; Sun. 11 am to 3 pm

NEW LOCATION: *Morningside Recreation Complex*
2400 Harn Blvd., Clearwater, FL

Featuring American made glassware and pottery.
Dealers from across the country

Admission: \$7.00; \$1.00 off with card or ad

Directions: from north - US 19S to Seville Rd./Harn Blvd. exit. Follow signs for Harn Blvd.
from south - US 19N to Seville Rd. exit. Follow signs to Seville Rd. then to Harn Blvd.

Harn Blvd. is also accessible at traffic light off
Belcher Rd. between Gulf to Bay Blvd. &
Nursery Rd. in Clearwater, FL

New Location **Show Information:** **New Location**
(860) 614-7133

National Cambridge Collectors, Inc.

2020 Benefit Auction

Saturday, March 14, 2020
St. Benedict Church, Gymnasium
233 N 7th Street • Cambridge, Ohio

INFORMATION

Preview at 8:30 a.m. Auction starts at 9:30 a.m.
Craig Connelly, Auctioneer Admission: \$2.00

All glass in the auction is guaranteed to be Cambridge. The Auction Managers have checked all glass carefully for verification and damage. Any piece purchased should be examined immediately by the purchaser, and returned within five items if not as represented. All damages are indicated in this catalog; last minute changes or addenda will be announced by the Auction Managers immediately prior to the auction. If no color is indicated herein, the item is crystal. There are no reserves and no buyer's premiums are charged.

TERMS: Payment is expected in cash the day of the sale; checks will be accepted with proper identification.

CATALOG: Lots will be sold in the order printed herein. A number in parenthesis () at the end of a listing indicates the number of that item available for sale. The auctioneer will announce whether such multiples are being sold individually or as a lot. If multiple items are being sold individually, a winning bidder may take any number available. If the catalog indicates "set," "pair" or a similar term, the lot is sold as such.

ABSENTEE BIDS: Anyone wishing to bid absentee, may do so by mailing their bids to the Auction Committee at the address below. All bids must be received by the end of Thursday prior to the auction to be eligible, so please allow enough time for the postal service to do its thing. **They must contain all the following information:**

- List showing the lots desired and the maximum bid for each lot.
- Valid Credit Card, VISA & MasterCard accepted. The following is required for a proper credit card transaction:
 1. Exact name as it appears on the card
 2. Expiration date
 3. 3-Digit Security Code on the back
 4. Exact address credit card statement is billed to
 5. Phone number
- Address where winning lot(s) are to be shipped to.

Bids will be executed secretly and a winning bidder will pay only the final auction price. If there are multiple absentee bids for the same lot, bidding will commence on the floor at the second highest bid, effectively shutting out all by the highest absentee bidder.

Shipping: Items can be shipped to street addresses only. WE CANNOT SHIP TO P.O. BOXES. If you are the successful bidder, your credit card will be charged as follows: **Final auction price + 5% transaction fee + cost of shipping.**

MAILING ADDRESS: All absentee bids must be mailed to:

NCC Auction Managers
P.O. Box 416
Cambridge, OH 43725

**BIDS MUST BE RECEIVED BY
THURSDAY, MARCH 12, 2020 TO BE ELIGIBLE**

QUARTERLY MEETING: The Quarterly Meeting of the NCC will be held on Friday, March 13 at 7:30 p.m. A preview of the auction glass will be presented. Show & Tell glass is also welcome at the meeting. All are welcome!

For additional copies of the catalog listing as well as detailed information on the entire auction, please visit the website at <http://www.cambridgeglass.org> under **Annual Auction.**

Additional copies of this catalog are included with admission to the auction.

2020 NCC Benefit Auction Listing

- | | | |
|----|-------|--|
| 1 | _____ | 1044 Ebony 10" Swan, Type 1 (Signed), Factory "Dimple" on Neck |
| 2 | _____ | 3400/119 Amethyst, Crystal 12 oz. Ball Shaped Decanter |
| 3 | _____ | 3500/15 Amber Individual Cream & Sugar (Set) |
| 4 | _____ | No. 274 Crown Tuscan 10" Bud Vase |
| 5 | _____ | Caprice 124 Crystal 8½" 3-part Celery and Relish |
| 6 | _____ | 3500/54 Crystal 6½" Low Comport, E761 Valencia |
| 7 | _____ | 1536 Crystal 5" Peg Nappy (4) |
| 8 | _____ | 3797/17 Crystal Cambridge Square Coffee Cup and Saucer (8) |
| 9 | _____ | 3798 Crystal Cambridge Square 10 oz. Goblet (4) |
| 10 | _____ | 3797 Crystal Cambridge Square Cocktail (8) |
| 11 | _____ | 3797 Crystal Cambridge Square Sherbet (8) |
| 12 | _____ | 3797/105 Crystal Cambridge Square 5 piece Condiment Set: /40 Individual Sugar & Creamer, /37 Oval Tray, /76 Salt & Pepper; and /54 6" Comport, and /67 Cupped Candlesticks (Lot) |
| 13 | _____ | No. 523 Light Emerald 1-bun Geisha on Brass Base |
| 14 | _____ | No. 522 Crystal 2-bun Geisha, with Metal Ring, No Base |
| 15 | _____ | 1402/3 Carmen 10 oz. Tally-Ho Goblet (2) |
| 16 | _____ | Pristine 499 Crystal 6½" Calla Lily Candlestick (Pair) |
| 17 | _____ | 3400/66 Peach-Blo 10" Club Luncheon Plate, E746 Gloria |
| 18 | _____ | 1137 Crystal 5½" High Blue Jay Figure Flower Holder |
| 19 | _____ | 1324 Forest Green 22 oz. Decanter (Stained) |
| 20 | _____ | Mount Vernon 89 Crystal Tall Salt & Pepper, #5000/76 Heirloom Tall Salt & Pepper, Cambridge Labels (2 pairs) (Lot) |
| 21 | _____ | No. 513 Champagne 13" Draped Lady Figure Flower Holder |
| 22 | _____ | Mount Vernon 22 Various 3 oz. footed Tumblers (1) Forest Green, (1) Amber |
| 23 | _____ | 3035 Carmen, Crystal 2½ oz. Wine |
| 24 | _____ | Caprice 249 Moonlight Blue 3½" Blown Vase |
| 25 | _____ | No. 556 Light Emerald 8" plate, E715 Willow |
| 26 | _____ | No. 513 Peach-Blo 13" Draped Lady Large Figure Flower Holder |
| 27 | _____ | No. 663 Crystal Epergne, Includes 1 - #1307 short stem 5" 3-lite Candlestick, 1 - #1438 2-vase arm, 2 - 2355 8" Vases |
| 28 | _____ | 3011 Forest Green, Crystal Statuesque Ashtray |
| 29 | _____ | 3600/156/69 Crystal Oyster Plate and Sauce Cup |
| 30 | _____ | Seashell 44 Carmen, Crystal 6" Flower Center |
| 31 | _____ | No. 319B2 Carmen, Crystal Georgian Basket |
| 32 | _____ | No. 319C Carmen Georgian Candy Box and Cover |
| 33 | _____ | 3900/35 Crystal 13½" 2 Handled Cake Plate, E772 Chantilly (Slight Scratches) |
| 34 | _____ | 3400/8 Light Emerald 11½" 2 Handled Sandwich Plate, E746 Gloria, Signed (Slight Scratch) |
| 35 | _____ | No. 300 Ebony 7" 3 Ftd. Candy and Cover, D/1059 Gold Encrusted Blossomtime (Slight Trim Wear) |
| 36 | _____ | 3035 Heatherbloom, Crystal 9 oz. Goblet |
| 37 | _____ | 2766 Mulberry Carnival Thistle 8¼" Nappy, Signed |
| 38 | _____ | Seashell 2 Crown Tuscan 7" Seashell Salad Plate, Charleton Blue Mist |
| 39 | _____ | Seashell 34 Crown Tuscan 4" 3 Ftd. Ash Tray, Charleton Blue Mist |
| 40 | _____ | Seashell 46 Milk 7½" Shell Flower Holder, (W131) |
| 41 | _____ | Martha Washington 46 Crystal 5 oz. Ftd. Tumbler, E Grape, Label |
| 42 | _____ | No. 218 Jade 9" Blown Candlestick |
| 43 | _____ | 1917/361 Mulberry 10" Center Handled Tray, Gold Encrusted E407, D/610 Gold Edge (Version 2), Gold wear |
| 44 | _____ | Victorian No. 3½ Amber 9" Candlestick (Pair) |
| 45 | _____ | 3400/1 Peach-Blo 13" Bowl Etched E752 Diane, Signed |
| 46 | _____ | No. 509 Crystal 2-Kid Figure Flower Holder |
| 47 | _____ | Tuxedo/6 Crystal 3 - 1 oz. Cordials; (1) Carmen Foot (1) Ebony Foot (1) Forest Green Foot |
| 48 | _____ | 3400/71 Crystal 3" 4-Toed Individual Nut, E761 Valencia |

- 49 _____ 3400/71 Crystal 3" 4-Toed Individual Nut, E772 Chantilly
- 50 _____ 3500/57 Crown Tuscan 8" 3-compartment Candy Box and Cover, D/1047 Gold Encrusted Wildflower
(RARE)
- 51 _____ Pristine 752 Crystal Cigarette Holder with Ash Tray Foot (Unusual)
- 52 _____ Pristine 360 Crystal Pristine Salt and Pepper with Plastic tops, E Daffodil
- 53 _____ 2651 Marigold Carnival Feather Sundae
- 54 _____ Peach-Blo Melon Boy Figure Flower Holder
- 55 _____ 1402/67 Crystal 6½ Comport, D/1015 Gold Encrusted Minerva
- 56 _____ 3011/2 Crystal Statuesque 11 oz. Table Goblet, Optic, Top rim repair
- 57 _____ 1066 Amber 7" Ivy Ball, stained top
- 58 _____ 3500/90 Amber, Crystal 6" Cigarette Holder or Footed Torchere Cup
- 59 _____ No. 315 Amber, Crystal 28 oz. Decanter, E523 Chrysanthemum
- 60 _____ 2500 Crystal ½ Gallon Pitcher
- 61 _____ 2699/424 Crystal Buzz Saw 2-piece Vase
- 62 _____ 2694 Crystal 6½" Nearcut Ftd. Comport, A shape
- 63 _____ 3200 Crystal 9" 3-footed bowl, Cut 2153 "Wild Rose"
- 64 _____ 3011 Crystal Statuesque 7" Cupped Comport
- 65 _____ 3011 Forest Green, Crystal Statuesque 7" Flared Comport
- 66 _____ Mount Vernon 130 Crystal 4" Candlesticks (Pair)
- 67 _____ No. 512 Peach-Blo Small Rose Lady Flower Holder
- 68 _____ 3400/9 Crystal 7" Candy Box and Cover, D/971 Gold Encrusted Gloria
- 69 _____ No. 76 Azurite 10" Vase, Gold Encrusted Laurel Wreath trim
- 70 _____ No. 520 Light Emerald Small Buddha on Original Metal base (no lamp fittings)
- 71 _____ No. 84 Jade 12" ftd. Cylinder Vase with Gold trim
- 72 _____ 3500/57 Crown Tuscan 8" 3-compartment Candy Box and Cover, Charleton "Blue Mist" (Trim Wear)
- 73 _____ 1302 Carmen, Crystal 9" Vase
- 74 _____ 1040 Emerald Green 3" Individual Swan Nut or Mint, Type 3
- 75 _____ 1043 Emerald Green 8½" Swan, Type 3
- 76 _____ Seashell 36 Windsor Blue Cigarette Box (same as Seashell 66)
- 77 _____ 3104 Carmen, Crystal 3½ oz. Cocktail
- 78 _____ Martha Washington 51 Heatherbloom 10 oz. Goblet
- 79 _____ Seashell 73 Windsor Blue 4" Candlesticks (Pair)
- 80 _____ Stratford 102 Experimental Green Opalescent Stratford Urn Salt, Signed **(RARE)**
- 81 _____ No. 525 Amber 5 oz. Cocktail, Wide Optic, Sterling Rooster Décor
- 82 _____ Mount Vernon 29 Forest Green 2½ oz. Mustard
- 83 _____ 1958 Original Cambridge Catalog, 160 Pages (A few pages out)
- 84 _____ 1949 Original Cambridge Catalog, 90 Pages, Price Guide
- 85 _____ 1043 Crown Tuscan 8½" Swan Type III, Charleton Gardenia, Gold Trim Worn
- 86 _____ 3400/102 Crown Tuscan 5" Globe Vase, D/1001 Gold Encrusted Portia
- 87 _____ 3011/9 Forest Green, Crown Tuscan Statuesque 3 oz. Cocktail
- 88 _____ 3011/9 Gold Krystal, Crown Tuscan Statuesque 3 oz. Cocktail
- 89 _____ 2780 Marigold Carnival 7" Strawberry Candlestick, Super Color, (Chips under bases) (Pair)
- 90 _____ 1237 Royal Blue, Crystal 10" Footed Vase
- 91 _____ 2906 Ivory 13" Draped Lady Large Figure Flower Holder, two base chips and 2 internal base cracks,
- 92 _____ 3035 Amber, Crystal 2½ oz. Wine, optic, partial Cambridge label
- 93 _____ 1040 Crown Tuscan 3" Individual Swan Nut or Mint, (Type 2)
- 94 _____ 3065 Crystal 6 oz. Café Parfait, optic, E715 Willow, Blue Enamel Encrusted, Gold Edge, top rim
gold wear
- 95 _____ 3105 Royal Blue Claret Wine, Pressed Rose Point
- 96 _____ No. 851 Crystal Ice Pail with Metal Handle, D/987 (Scotty) enamel missing on rear leg
- 97 _____ Carmen Ashtray, Hat Shape
- 98 _____ No. 878 Crystal 4" Candlestick, E744 Apple Blossom (Pair)
- 99 _____ 3400/92 Crystal 32 oz. Ball Shaped Decanter & 3400/92 - 2½ oz. optic Tumblers (6) E746 Gloria,
(Set)

100	_____	1236 Carmen, Crystal 8" Ivy Ball
101	_____	1237 Carmen, Crystal 10" Footed Vase
102	_____	1311 Carmen, Crystal 4" Footed Ash Tray
103	_____	No. 135 Ivory 10" Cheese and Cracker Set, Gold Encrusted E707, gold trim wear
104	_____	No. 270 Ebony Boudoir Lamp, Gold Trim
105	_____	No. 270 Azurite Boudoir Lamp, Gold Trim
106	_____	Mount Vernon 8 Carmen Cream & Sugar
107	_____	Mount Vernon 9 Carmen 1 lb. Candy Jar and Cover
108	_____	Pristine 560 Mandarin Gold 8½" Crimped Vase
109	_____	No. 485 Crystal 9½" Crescent Salad Plate, R.C. Eng. 720 Adonis
110	_____	3400/71 Amethyst 3" 4-Toed Individual Nut (signed)
111	_____	3011/2 Heatherbloom, Crystal Statuesque 11 oz. Table Goblet
112	_____	Seashell 10 Pearl Mist Statuesque 5" Comport
113	_____	1317 Forest Green, Crystal 12" Vase
114	_____	1402/139 Amber 10" Tally-Ho Top Hat Vase
115	_____	No. 511 Crystal Tombstone Bookends, after market cut "Butterflies" (Pair)
116	_____	Azurite 22 oz. Dog Bottle, Original Factory Paint (no tumbler top)
117	_____	No. 300 Crystal 6" Candy Box and Cover with Rose Knob, E754 Portia
118	_____	No. 317 Heatherbloom 5 oz. Georgian Tumbler
119	_____	2368 Crystal 10" Vase, E523 Chrysanthemum with E625 Border
120	_____	No. 94 Azurite 7" x 8¼" Sweet Pea Vase
121	_____	1234 Forest Green, Crystal 12" Vase
122	_____	2760 Crystal 8" Daisy Nappy, F shape
123	_____	3077 Peach-Blo 1 oz. Cordial Etched Cleo
124	_____	2860/423 Crystal Lexington 8" Footed Vase (Lavender Tinge)
125	_____	1327 Various 1 oz. Cordials: LaRosa(2), Pistachio, Amber, Mocha, Forest Green, Moonlight, Gold Krystol (8 total) (Set)
126	_____	1337 Forest Green, Crystal Cigarette Holder
127	_____	No. 870 Light Emerald Decagon 11" Hld. Sandwich Tray, E731 (Rosalie)
128	_____	Seashell 10 Crown Tuscan Seashell 5" Statuesque Comport, Charleton Roses
129	_____	No. 511 Bluebell Tombstone Bookends (pair) Corner Chips on both
130	_____	3011 Forest Green, Crystal Statuesque Cigarette Box and Cover, Short Stem
131	_____	No. 199 Ebony ½ oz. Atomizer
132	_____	1917/361 Bluebell 10" Handled Sandwich Tray, D/845 Gold Encrusted Dresden Rose (slight gold loss)
133	_____	1321 Crystal 28 oz. decanter, R.C. Eng. 720 Adonis (Slight staining)
134	_____	2651 Crystal Feather Handled Basket , Signed Nearcut
135	_____	2651 Crystal 9" Feather Salver , Signed Nearcut
136	_____	No. 680 Amber Compact & Cover E517 (Early Wildflower) Gold Encrusted, Some gold loss on edge
137	_____	Caprice 167 Moonlight Alpine 6" Covered Candy Box
138	_____	500/95 Rubina 1 lb. Candy Jar & Cover, Honeycomb Optic
139	_____	3011/26 Amethyst, Crystal Statuesque 4" Bud Vase
140	_____	3011/12 Carmen, Crystal Statuesque 3 oz. Wine
141	_____	3011 Crown Tuscan Statuesque Ivy Ball
142	_____	2699/415 Carnival on Emerald Buzz Saw 8 oz. Table Tumbler
143	_____	Sheffield 656 Crystal 8" - 6004 Vase, Sterling Foot E772 Chantilly
144	_____	No. 636 Ebony 9½" Candlesticks and No. 858 - 13¼" Flip Bowl, all D/805 Gold Encrusted Imperial Hunt (Set), Bowl has interior staining
145	_____	Martha Washington 41 Heatherbloom 9½" Covered Urn
146	_____	3011 Carmen, Crystal Statuesque Ashtray
147	_____	3011 Carmen, Crystal Statuesque Cigarette Box and Cover, Tall Stem
148	_____	No. 676 Peach-Blo 11½" Bowl, E758 Chintz (#1), signed
149	_____	3900/117 Crystal 20 oz. Jug, R.C. Eng. 821 King Edward, Sheffield Sterling foot
150	_____	Pristine 306 Carmen 6" Candy Box with Lid

151	_____	3400/76 Carmen, Crystal Shaker with Crystal Lid (2)
152	_____	1138 Crystal 8½" High Sea Gull Figure Flower Holder
153	_____	3900/33 Crystal 13" 3 Footed Torte Plate, E762 Elaine
154	_____	1349 Crystal 12½" 4 Footed Crimped Bowl, E Marjorie
155	_____	No. 957 Crystal Ice Pail with Metal Handle, E Candlelight
156	_____	No. 647 Windsor Blue 6" 2-Light Candlestick, Version 4 (Pair)
157	_____	No. 15 Crystal Cambridge Glass Factory Paperweight, Gold Encrusted
158	_____	1015 Amethyst Cambridge Glass Pyramid Advertising Sign, Gold Encrusted
159	_____	1371 Tahoe Blue Bridge Hound
160	_____	No. 848 Light Emerald 2-Kid Figure Flower Holder with Oval base
161	_____	1023 Light Emerald 9½" Vase, E Cleo (Unknown #6 border), Chip on top rim, Flakes
162	_____	Caprice 101 Moonlight Blue 3 oz. Oil with Stopper
163	_____	Caprice 241 Emerald 4½" High Vase
164	_____	2358 Light Emerald 12" Vase, E524 Betty, Gold Trim
165	_____	No. 274 Willow Blue 10" Bud Vase, E524 Betty, Gold Trim
166	_____	1042 Milk 6½" Swan (Type 3) (W96), chip on one foot
167	_____	3500/55 Crystal 6" 2-handle Footed Basket, E763 Minerva, Platinum Edge
168	_____	Caprice 3 Crystal Alpine molded 3½ oz. cocktail
169	_____	3121 Gold Krystol, Crystal 1 oz. Cordial, E Wildflower
170	_____	7966 Crystal 1 oz. Cordial, Etched E752 Diane
171	_____	3085 Peach-Blo, Emerald 1 oz. Cordial
172	_____	3121 Crystal 1 oz. Cordial, D/1041 Gold Encrusted Rose Point
173	_____	3085 Light Emerald 1 oz. Cordial, D718 Imperial Hunt
174	_____	Caprice 300 Moonlight, Crystal 1 oz. Cordial
175	_____	3078 Carmen, Crystal 1 oz. Cordial
176	_____	Caprice 300 Pistachio/Crystal 1 oz. Cordial
177	_____	3135 Gold Krystol, Crystal 1 oz. Cordial
178	_____	1402/13 Crystal 1 oz. Cordial, E718 Imperial Hunt
179	_____	3500 Royal Blue, Crystal 1 oz. Cordial
180	_____	3575 Moonlight, Crystal Stradivarius 1 oz. Cordial
181	_____	1402/13 Carmen 1 oz. Cordial, Tally-Ho
182	_____	1070 Carmen 2 oz. Pinch Tumbler
183	_____	1344 Crystal 1 oz. Cordial Tumbler, E754 Portia
184	_____	Mount Vernon 87 Milk 1 oz. Cordial (W69)
185	_____	7966 Amber 1 oz. Cordial
186	_____	3121 Crystal 1 oz. Cordial, R.C. Eng. 698 Achilles
187	_____	3500 Mocha, Crystal 1 oz. Cordial
188	_____	3077 Emerald 1 oz. Cordial, E Cleo
189	_____	3120 Gold Krystol, Crystal 1 oz. Cordial, E744 Apple Blossom
190	_____	3077 Peach-Blo 1 oz. Cordial, E718 Imperial Hunt
191	_____	3121 Crystal 1 oz. Cordial, D/1001 Gold Encrusted Portia
192	_____	3011/13 Carmen, Crystal Frosted Statuesque 1 oz. Brandy, Satin
193	_____	3111 Crystal 1 oz. Cordial, Etched Candlelight
194	_____	3105 Amber, Crystal 1 oz. Cordial, Pressed Rose Point
195	_____	3105 Royal Blue, Crystal Cocktail, Pressed Rose Point
196	_____	No. 506 Crystal 5½" Butter Dish and Cover, E Rose Point
197	_____	1321 Crystal 28 oz. Decanter, E Rose Point
198	_____	No. 663 Crystal Epergne, E Rose Point, Includes 1 - #1307 short stem 5" 3-lite Candlestick, 1 - #1438 2-vase arm, 2 - 2355 8" Vases
199	_____	No. 980 Crystal 5" Covered Cheese, E Rose Point, signed (bottom scratched) (RARE)
200	_____	No. 0653 Crystal 5⅞" Comport, E Rose Point, Wallace Sterling pierced Rose Point
201	_____	No. 556 Crystal 8" plate, E Rose Point, Wallace Sterling rim
202	_____	No. 498 Crystal 2 oz. Tumbler, E Rose Point (2)
203	_____	3400/92 Crystal 2½ oz. Tumbler, E Rose Point (2)

204	_____	Pristine 728 Crystal 5 piece Ash Tray Set, E Rose Point
205	_____	3900/72 Crystal 6" 2 Lite Candlesticks, E Rose Point (Pair)
206	_____	No. 944 Crystal 9½ oz. Sugar, E Rose Point (RARE) Round Line
207	_____	7801 Crystal 5 oz. Footed Tumbler, E Rose Point, Hard to Find
208	_____	No. 628 Crystal 3½" Candlesticks, E Rose Point (Pair)
209	_____	3500/64 Crystal 10" 2-handle 3-compartment Celery and Relish, E Rose Point
210	_____	3900/33 Crystal 13" 3 Footed Torte Plate, E Rose Point
211	_____	No. 477 Crystal 9½" Pristine Corn Dish, E Rose Point (2)
212	_____	3500/108 Crystal 2½" Candlesticks, Ruffled Top, E Rose Point (Pair)
213	_____	3400/67 Crystal 12" 5 Compartment Relish, E Rose Point
214	_____	3500/652 Crystal 12" Celery, E Rose Point
215	_____	No. 394 Crystal 10" 5 Compartment Relish, E Rose Point
216	_____	1603 Crystal 10" High Hurricane Lamps, #1603 shades, E Rose Point and #27 Bobeches, Pair
217	_____	1956/105 Crystal Salt & Pepper E Rose Point
218	_____	3121/1 Crystal 5½" Tall Blown Compote Etched Rose Point
219	_____	1471 Crystal Shaker, E Rose Point (Pair) both Stained
220	_____	No. 278 Crown Tuscan 11" Vase, D/1041 Gold Encrusted Rose Point
221	_____	3400/38 Carmen, Crystal 80 oz. Ball Jug, Ice Lip
222	_____	1305 Amber 10" Vase
223	_____	No. 278 Light Emerald 11" Footed Vase, E524 Betty, Gold Band Border Overlay
224	_____	Seashell 1 Crown Tuscan 5" Bread & Butter Plate (pale color)
225	_____	3011/29 Amber, Crystal Statuesque 4" Mint
226	_____	No. 74 Ebony 7" Candlestick, Gold Seaweed and Mother of Pearl decoration
227	_____	1542 Crystal, Cranberry Stain 20 oz. Life Saver Decanter Engraved Grapes
228	_____	2616 Crystal 1½ oz. Horn Candy Bottle w/closure
229	_____	Crystal 1½ oz. Hobby Horse Candy Bottle, with Closure
230	_____	3011/5 Amber, Crystal Statuesque 6 oz. Hoch
231	_____	3011/3 Royal Blue, Crystal Statuesque 6 oz. Saucer Champagne
232	_____	1043 Moonlight Blue 8½" Swan, Type 2 Signed (RARE)
233	_____	3011/6 Forest Green, Crystal Statuesque 5 oz. Roemer
234	_____	Caprice 478 Crystal Footed Punch Bowl
235	_____	1272 Gold Krystol Lamp made from 10½" Candelabrum, E754 Portia
236	_____	3500/41 Crown Tuscan Lamp made from Covered Urn, D/1012 Gold Encrusted Diane Lid not fitting
237	_____	3035 Light Emerald 2½ oz. Wine, Optic, E744 Apple Blossom
238	_____	No. 646 Heatherbloom 5" Candlestick, E746 Gloria
239	_____	3400/1185 Peach-Blo 10" 2 Handled Bowl, E752 Diane, signed
240	_____	No. 647 Peach-Blo 6" 2-lite Candlestick, E752 Diane (Pair)
241	_____	3400/1240 Peach-Blo 12" 4-Toed Oval Bowl, E752 Diane
242	_____	No. 509 Peach-Blo 2-Kid Figure Flower Holder
243	_____	3011/7 Heatherbloom, Crystal Statuesque 4½ oz. Claret
244	_____	3011/8 Forest Green, Crystal Statuesque 4½ oz. Sauterne
245	_____	3400/71 Carmen 3" 4-Toed Individual Nut
246	_____	1957/100 Carmen 10" Oval Bowl
247	_____	3400/38 Heatherbloom, Crystal 80 oz. Ball Shaped Jug
248	_____	3500/37 Crystal 7" Tall Comport, E762 Elaine
249	_____	No. 119 Azurite 7" Handled Basket, Gold Decoration
250	_____	No. 198 Bluebell Cologne with Ground Stopper
251	_____	3400/77 Crystal, Emerald Salt and Pepper, E744 Apple Blossom (Pair)
252	_____	1402/37 Carmen Tally- Ho 2½ oz. Tumbler, Gold D/1007-8
253	_____	1194 Light Emerald Bathroom Bottle, E Bicarb. Soda
254	_____	3011/9 Amethyst, Crown Tuscan Statuesque 3 oz. Cocktail
255	_____	1121 Peach-Blo Ice Pail, Metal Handle & Tongs, E718 Imperial Hunt
256	_____	Seashell 44 Amber, Crystal 6" Flower Center
257	_____	No. 14 Pomona Green 10" Plainware Shallow Cupped Bowl

258	_____	3121 Heatherbloom Tall Sherbet, All Heatherbloom (RARE)
259	_____	500/? Rubina 7" Honeycomb Flat Rim Comport
260	_____	1043 Milk 8½" Swan (Type 3) (W97)
261	_____	Seashell 12 Crown Tuscan 8" Comport, Charleton Harbor & Roses decoration
262	_____	7606 Crystal 6 oz. Saucer Champagne or Tall Sherbet, E731 Marjorie (6), one with small rim chip
263	_____	3500/15 Carmen Individual Cream & Sugar (Set)
264	_____	1314 Amethyst, Crystal 3" Footed Ash Tray
265	_____	1338 Moonlight 6" 3-lite candlestick (Pair)
266	_____	Mount Vernon 4 Crystal Bread & Butter Plate (8)
267	_____	1613 Crystal 17" Hurricane lamps, D/1047 Gold Encrusted Wildflower (no bobeches /prisms)
268	_____	No. 520 Light Emerald Small Buddha lamp with original fabric shade
269	_____	No. 274 Crystal 10" Bud Vase, R.C. Eng. 985 Maryland
270	_____	No. 820 Madeira Handled Serving Tray with 1341 - 1 oz. Cordials (6) (Set)
271	_____	No.993 Crystal 12½" 4-Footed Bowl & No. 647 - 6" 2-Lite Candlesticks, R. C. Eng. 985 Maryland (Pair), (Set)
272	_____	3600/469 Crystal 7½" Tall Comport, D/1059 Gold Encrusted Blossom Time
273	_____	No. 972 Ebony 11" 2-handle Plate, D/973 Gold Encrusted Lorna (slight trim wear)
274	_____	No. 206 Primrose 1½ oz. Cologne, Gold Band trim, no dauber, (trim wear)
275	_____	No. 124 Primrose 3½" Favor Basket
276	_____	3500/113 Crystal 15" x 4½" - 4 compartment Celery & Relish, E762 Elaine
277	_____	3400/38 Crystal 80 oz. Ball Shaped Jug, Ice Lip, R.C. Eng. 824 Lucia
278	_____	No. 957 Crystal Ice Bucket w/handle, E Candlelight, Signed
279	_____	No. 432 Ebony 8½" Ram's head Bowl
280	_____	1240 Ebony 12" Oval bowl, E739, Scratched
281	_____	No. 340 Topaz 8" 2 handled - 4 compartment Relish, E732
282	_____	3000 Crystal 5" 1-handle Square Footed Mayonnaise, cut 2079
283	_____	3400/38 Almond, Crystal 80 oz. Ball Jug with Ice lip and 3400/38 12 oz. Tumbler (3) (Set) (Amber with Frosted interior)
284	_____	No. 109 Night Blue 9½" Dolphin Candlesticks (Pair)
285	_____	3011/61 Gold Krystol, Crystal Statuesque 9" Candelabrum with Bobeche and Prisms (Pair), ½" crack in upper candle cup on one
286	_____	3011/25 Royal Blue, Crystal Statuesque 4½" Ivy Ball
287	_____	3900/37 Mandarin Gold 8" Sugar and Cream Tray, No. 606 Oval Celery Dip (Light Emerald) (Signed)
288	_____	1250 Ebony 6" Vase, Satin Finish (Springtime), Coralene bead decoration on flowers and leaves, (small rim repair)
289	_____	1043 Crystal 8½" Swan, #1042 6½" Swan, Type III, #1041 4½" Swan (2), Type III 1 signed, neck turned opposite direction and #1040 3" Swan, Type II (Lot)
290	_____	3035 Crystal, Peach-blo 3 oz. Cocktail, E746 Gloria
291	_____	1402/10 Forest Green Tally-Ho 3 oz. Cocktail, E746 Gloria
292	_____	3115 Peach-Blo, Willow Blue foot 3 oz. Footed Tumbler, E731 (Rosalie)
293	_____	No. 848 Peach-Blo 2-Kid Figure Flower Holder with Oval Base
294	_____	1115 Willow Blue 11" Bashful Charlotte Figure Flower Holder
295	_____	3400/92 Carmen, Crystal Farber 32 oz. Ball Shaped Decanter
296	_____	3011 Carmen, Crystal Statuesque 7" Cupped Comport
297	_____	3011 Carmen, Crystal Statuesque 7" Cupped Comport, Tall Stem
298	_____	Mount Vernon 1 Milk 10 oz. Goblet (Set of 8)
299	_____	1180 Ebony 5¼" 2 Handled Bonbon D/983-S (Polo Scene)
300	_____	No. 274 Peach-Blo 10" Bud Vase, E524 Betty
301	_____	No. 638 Crystal 6½" 3-lite Candelabrum, R.C. Eng. 541 (Pair)
302	_____	No. 227 Topaz 5" Candlestick, E704 (Pair)
303	_____	1525 Topaz 1" Salt Dip
304	_____	1455 Willow Blue 2½" x 2½" Cigarette Holder and 1456 2½" Ashtray
305	_____	1040 Carmen 3" Individual Swan Nut or Mint, Type 2 (signed)
306	_____	1006 Peach-Blo 6½" Footed Vase or Aquaria, E Martha

307	_____	Azurite 22 oz. Cat Bottle, Original Factory Paint (no tumbler top)
308	_____	3104 Gold Krystol, Crystal 5 oz. Tall Hoch
309	_____	3011/13 Moonlight, Crystal Statuesque 1 oz. Brandy
310	_____	3011/9 Amber, Crown Tuscan Statuesque 3 oz. Cocktail
311	_____	Mount Vernon 12 Milk 5" Ivy Ball (W79)
312	_____	Carrara Imperial Rolling Pin with Wood Handles
313	_____	1124 Crystal Pouter Pigeon Book Ends (Pair)
314	_____	3400/38 Royal Blue, Crystal 80 oz. Ball Shaped Jug & 3400/38 - 12 oz. Tumbler (5), Set
315	_____	3500/41 Amethyst 10" Covered Urn or Candy Jar
316	_____	1066 Forest Green 10 oz. Light Blown Tumblers (2), Hard to find
317	_____	No. 95 Primrose 1 lb. Candy Jar & Cover
318	_____	1321/7966 Forest Green, Crystal 7 Piece Sherry Set, Includes 1321 - 28 oz. Decanter and 7966 - 2 oz. Sherries (6) Set
319	_____	Farber 5454 Amber 3400/17 Handled Shakers, Farber 5453 3 oz. Oil & Vinegar on Farber center handled tray
320	_____	No. 1 Opal 9" Crucifix candlestick
321	_____	No. 783 Ebony 12" Vase, E736
322	_____	3104 Gold Krystol, Crystal 5 oz. Tall Hoch (4)
323	_____	Stratford 57 Crystal 7" Stratford Squat Vase, Plain Edge
324	_____	3500/41 Crown Tuscan 10" Covered Urn or Candy Jar
325	_____	3126 Royal Blue, Crystal 7 oz. Tall Sherbets (4)
326	_____	7606 Amber 6 oz. Tall Sherbet, E731 (Rosalie), Narrow Optic, (4)
327	_____	No. 119 Amber 7" Basket, Crystal Handle
328	_____	No. 68 Azurite 10" Candlesticks (Pr) and No. 5 - 7" Bowl, E527 Gold Encrusted Rose (Set)
329	_____	No. 260 Ivory 9" Tall 6½" Diameter Tall Comport, Blown (RARE)
330	_____	No. 225 Jade 9½" Ball Stem Candlestick (Pair)
331	_____	3400/100 Royal Blue, Crystal 76 oz. Jug with Ice lip, (Slight scuff on one side), Scratched
332	_____	3500/57 Crown Tuscan 8" 3-compartment Candy Box and Cover, D/1001 Gold Encrusted Portia
333	_____	No. 646 Amber 5" Candlestick, E752 Diane (Pair)
334	_____	No. 274 Crystal 10" Bud Vase, D/1063 Talisman Rose
335	_____	No. 46 Ivory 8" Low Ftd. Compote
336	_____	No. 65 Ebony 9½" Doric Candlesticks (Pair)
337	_____	3011/2 Crystal, Frosted Stem Statuesque 10 oz. Table Goblet, Satin Stem
338	_____	No. 313 Light Emerald 8¾" Vase, Optic, E Cleo
339	_____	1312 Crown Tuscan Footed Cigarette Box & Cover, D/1001 Gold Encrusted Portia, Acid Signature
340	_____	1311 Crown Tuscan 4" Footed Ash Tray, D/1001 Gold Encrusted Portia, Acid Signature
341	_____	No. 710 Bluebell Ink Bottle and Stopper, Chip on Stopper
342	_____	No. 636 Gold Krystol 9½" Candlestick (Pair)
343	_____	No. 438 Rubina 8½" Candlestick (Single)
344	_____	Pristine 496 Crystal 5" Interchangeable Candlestick/flower trough, Version 1 full cut, Corner Chip
345	_____	3011 Gold Krystol, Crystal Statuesque Covered Cigarette Box, Tall Stem
346	_____	Seashell 70 Crystal 3½" Turtle Flower Block, Chip on Head
347	_____	3500/67 Crystal 12" Tray, E761 Valencia
348	_____	3400/70 Crystal 3 1/2" 4-footed Cranberry, Signed (4)
349	_____	1917/88 Mulberry 1/2 lb. Candy Jar & Cover, Optic
350	_____	No. 628 Peach-Blo 3½" Candlesticks, E704 (Pair)
351	_____	3500/79 Mocha 3" Basket
352	_____	No. 462 Crystal 11½" Lobster Plate
353	_____	Stratford 80 Crystal 5½" Stratford Plain Edge Handled Comport
354	_____	1119 Crystal Eagle Bookend (Pair)
355	_____	No. 94 Light Emerald 6" Sweet Pea Vase, with border cutting
356	_____	3500/41 Amber 10" Covered Urn or Candy Jar
357	_____	3400/103 Amethyst 6½" Globe Vase (No 3400 darts) Scratched interior
358	_____	7606 Light Emerald 9 oz. Goblet, E731 (Rosalie), Narrow Optic, (4)

359	_____	Wetherford 57 Topaz/Satin Wetherford 8" Cupped Deep Bowl with scalloped edge, and 6 Wetherford 61 4" Deep Bowls with scalloped edge (Set)
360	_____	3400/10 Amber 11" Handled Sandwich Tray, D970 Gold Encrusted Apple Blossom
361	_____	No. 488 Mulberry 3 Piece Boudoir Set
362	_____	1441/1 Crystal 9½" Candelabrum with Bobeches and Round Prisms (Pair)
363	_____	1128 Crystal Scotty Dog Bookend (Pair)
364	_____	3900/67 Crystal 5" Candlesticks, E Candlelight (Pair)
365	_____	3400 Ebony 2 oz. Wine in Farber chrome holder, 5 7/8" tall
366	_____	3130 Gold Krystol 2½ oz. Wine, E744 Apple Blossom
367	_____	1402/52 Carmen Tally-Ho Ice Pail with Chrome Handle
368	_____	3500/44 Carmen 8" Footed Urn Vase
369	_____	No. 94 Amber 6" Sweat Pea Vase, E Cleo
370	_____	3400/129 Crystal 6" Lemon Tray, E754 Portia
371	_____	No. 388 Crystal 4" Ash Tray, E752 Diane
372	_____	No. 972 Willow Blue 11" 2-handle Plate, E733
373	_____	3500/109 Royal Blue 11" 4-toed Rams Head Oval Bowl
374	_____	Everglade 3 Amber 2-lite Candlestick (Pair)
375	_____	No. 225 Helio 9" Ball Stem Candlestick (Pair)
376	_____	1115 Peach-Blo 11" Bashful Charlotte Figure Flower Holder, Satin Finish
377	_____	Pristine 578 Milk 3½" Miniature Cornucopia (W92)
378	_____	3797/152 Crystal 3-piece Smoker Set in Display Box, Original Box w/Factory Labels
379	_____	1633 Moonlight 5" Peg Vase for Cambridge Arms
380	_____	No. 972 Amber 11" Decagon Cake Plate & No. 971 - 8½" 2-handled Salad Bowl, E727 (Gold Trim Wear), both Signed
381	_____	Martha Washington 17 (W132) Milk 7½" Fan Vase
382	_____	1541 Crystal 28 oz. Square Decanters, E Bourbon & E Rye (Pair)
383	_____	1043 Peach-Blo 8½" Swan, Type I, Signed
384	_____	No. 973 Light Emerald Bridge Set Tray with 1630 - 5 oz. Tumblers, E523 Chrysanthemum
385	_____	No. 793 Amber 9" Vase, E524 Betty
386	_____	1309 Crown Tuscan 5" Globe Vase
387	_____	500/95 Amber 1 lb. Candy Jar & Cover, Honeycomb Optic
388	_____	No. 627 Willow Blue 4" Candlesticks, Version 1, E731 (Rosalie) (Pair)
389	_____	No. 856 Willow Blue Decagon 11" Bowl, E731 (Rosalie) Signed
390	_____	No. 972 Willow Blue 11" 2-handle Plate, E738 Wedgewood/Adams, partially Gold Encrusted, Gold Trim Worn, Signed
391	_____	1091 Peach-Blo Decagon Sauce boat and underplate
392	_____	3400/121 Crystal 38 oz. Cocktail Shaker, Chrome Top
393	_____	No. 554 Peach-Blo 6½" Plates, D/805 Gold Encrusted E718 Imperial Hunt (6) (Set)
394	_____	No. 1 Moonlight 2½" Star Candlestick (Pair)
395	_____	3035 Peach-Blo, Crystal 6 oz. Tall Sherbet, E754 Portia
396	_____	7606 Crystal 10 oz. Goblet, E754 Portia
397	_____	1261 Crystal French Salad Dressing Bottle with Stopper, E754 Portia
398	_____	3900/100 Crystal 6 oz. Oil, Ground Stopper, E754 Portia
399	_____	3400/161 Crystal 6 oz. Oil with Stopper, E754 Portia
400	_____	33 Topaz Door Knob (1)
401	_____	Seashell 15 Crown Tuscan 6" Comport, Charleton Blue Mist decoration
402	_____	200/2 Ivory 7½" Candlestick, Multi Colored Painted Floral Decoration with Black Enamel Edge Line (1) (Enamel Worn)
403	_____	No. 278 Ebony 11" Footed Vase, D/1047 Gold Encrusted Wildflower
404	_____	3400/102 Crown Tuscan 5" Globe Vase, Black Enamel trim, Iridized Finish, Black Enamel Stamp
405	_____	1956/2 Smoke 10" Ashtray with peg



Cambridge Curiosities

By Jack Thompson Chapter 3



Welcome to some of my whimsical observations of the wonderful world of Cambridge glass. Over time, we have come to realize there are so many interesting, strange and/or quirky things about this company and the beautiful products they made. Some may never be explained, but all are just plain fun to think about. These are not meant to be things exhaustively researched; I'll leave that up to you readers or maybe Frank's column of Only Questions – No Answers. Let's just have some fun!

In this column I want to focus entirely on the #3500 or Gadroon Line. This was a huge and popular line introduced in 1933, and there are so many interesting things to examine. Here are just a few of my favorites.

- When the #3500 stemware line was introduced in the 1933 catalog supplement, they had two different 10 oz. goblets, the Tall Bowl and the Short Bowl, and that's the way they were referred to. Initially this must have created some confusion with the salesman's ordering. The solution was to designate the Long Bowl the #3500/1 and the Short Bowl the #3500/2, as these designations show up in the 1935 price catalog. All the remaining 3500 stems are just titled by their shape, such as #3500 – 3 oz. cocktail or the #3500 – 5 oz. Café Parfait. This continued into the 1940s as the designations still existed in the 1940 catalog and price pages. Prior to the 1949 catalog being issued, the Short Bowl was dropped from the line as there is no further mention of it. However the Long Bowl continued to carry the #3500/1 designation.



3500/1



3500/2

- Since we're on the subject of #3500 stemware, this line is the only one to have a 13 oz. Footed Tumbler. Of course it also had the immensely popular 12 oz. Footed Tumbler or Iced Tea. Why the 13 oz. Footed Tumbler? Was 12 oz. just not quite enough for some people? It's not always easy to recognize right away, as the difference in 1 oz. is nothing in a handmade piece of glass. In fact they rarely hold more than 12 oz. It's a different shape than the 12



oz. but similar to the 10 oz. You just have to know the shape and dimensions, 7" H x 3 3/4" W.

10 oz, 13 oz, 12 oz ftd tumblers

- This one has been really bugging me for years. Why is there no dinner plate? The line has a Bread & Butter, Dessert & Salad Plate. This was one of Cambridge's largest lines with stemware and all the serving pieces. Are you kidding me??? How could this have happened? The numbers #3500/3, 4 & 5 were used for the Bread & Butter, Dessert & Salad Plates respectively. The numbers 6, 7, 8 & 9 were not used. Maybe a Dinner Plate, Service Plate and Chop Plate could fit in there? The #3400 and #1402 lines, the other major lines at the time, both had all 6 different plates with the numbers being nicely sequential. That's the way things should be, nice and orderly. And then as if things weren't weird enough, in 1938 and then in the 1940 catalog they decided to turn the #4 Dessert Plate into the #167 Salad Plate. Now they had two different size salad plates and no dessert plate. I think somebody did that just to drive someone like me crazy years later. An interesting side story: Some years ago I bought a collection of RCE Croesus that had come from the original owner. Croesus is cut predominantly on the #3500 line. The 3 different size plates were all there, but since no #3500 Dinner Plate existed, they had the company cut #3400 Dinner Plates instead. How many cut dinner plates have you seen?
- Where are the Salt & Pepper Shakers? Cambridge made so many different shakers, and for all the major lines. But not here. Very strange.
- And then there's the Ice Bucket. According to MVSG.ORG, it had a number, #3500/138, but no image available. Has anyone actually seen one? I imagine they might have taken the popular #852 ice bucket and given the top rim a nice gadroon edge, don't you think? It would have been easy to do.
- Cambridge applied for and received patents for a couple of very cool looking #3500 designs on Dec. 29, 1931, a celery and mayonnaise dish.

These are awesome looking and were very ornate comparatively. However, they seem to never have been put in production. It would have been neat to see these though. Maybe there are some samples out there somewhere.

Cambridge settled on a more simple and versatile mold for the mayonnaise. It could be used for a number of different items and would fit in a seated plate for sets.



3500/59, 3-Pc. Mayonnaise Set, Gold Encrusted

For the Celery, I guess it was easier and less expensive to just include the #652 Celery in the #3500 line as an accessory item. It had been in the Cambridge line since the mid-1920s and was an accessory item to the #3400 Line and Round Line, as well. The redesign of the #652 to add the gadroon edge appears to actually predate the introduction of the #3500 line by over a year. No evidence of the original #652 Celery without the gadroon edge appears to actually predate the introduction of the #3500 line by over a year. No evidence of the original #652 Celery without the gadroon edge appears to actually predate the introduction of the #3500 line by over a year.



248 - Pristine 11 in. Celery



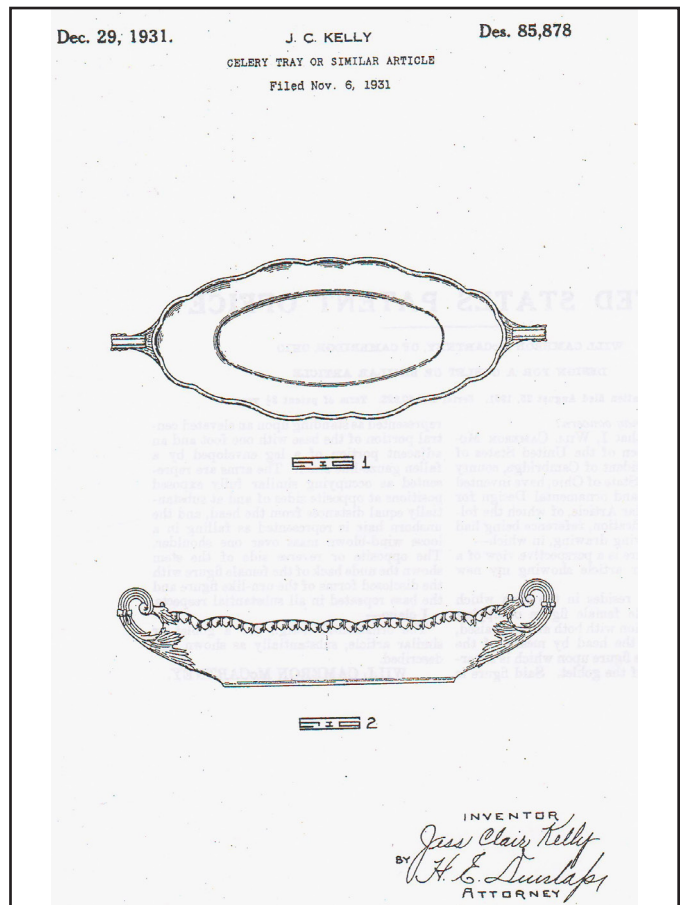
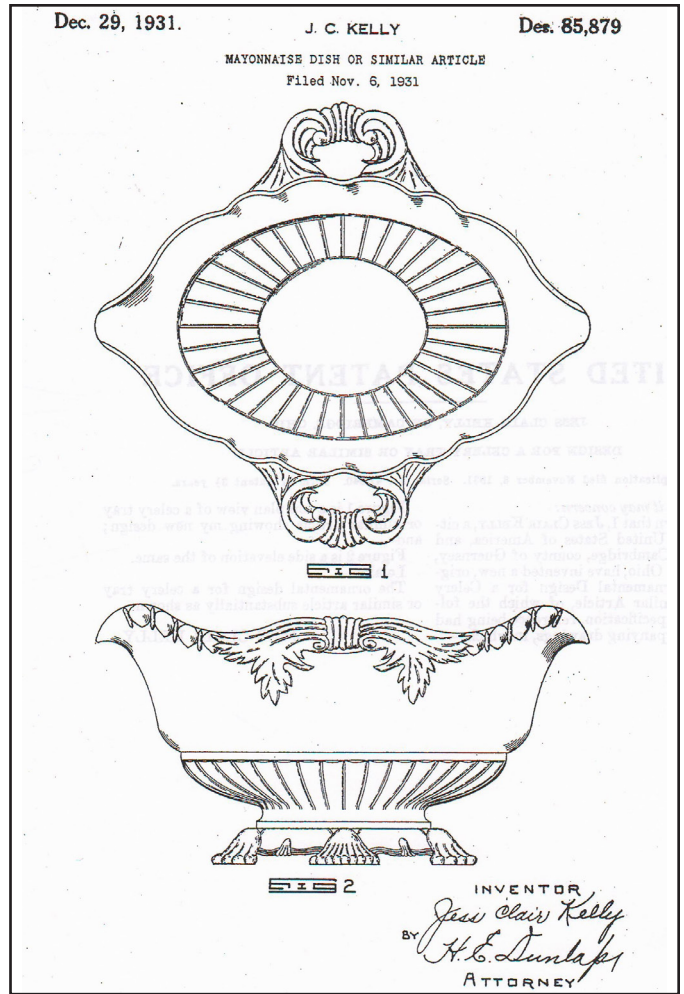
3500/652 - 12 in. Celery

Double bonus points if you observed that the etching is done on the bottom of the #652, but not the Pristine. Is it consistently that way? So far as we can tell, but that can change of course. Let me know if you have examples to the contrary.

Until next time, share your enthusiasm and enjoyment of Cambridge glass!

Jack

jack1746@roadrunner.com



**Additional Photos
from the Fall 2019
Educational Meeting**



Recent Finds



3400/68 Light Emerald Cream and Sugar,
etched Gloria with gold trim

Welcome to the eBay Report. This column features Cambridge glass items that sold on eBay circa mid-October to mid-December, 2019. Selling prices have been rounded to the nearest dollar. If no color is mentioned, assume that the piece or part of it being discussed is crystal. Here we go:

“Incognito” Glass on eBay

I often state that an eBay offering was an “incognito” listing. When an eBay seller lists an item for sale, they have to select a category. Most Cambridge Glass items are listed under “Pottery&Glass>Glassware>Elegant>Cambridge.” However, some sellers don’t know what they have, and will list an item under a generic glass category such as “Depression>Unknown” or “Elegant>Unknown.” They might also choose a category for the type of item, such as “Collectibles>Barware.” These auctions don’t reach the eyes of as many Cambridge collectors, resulting in fewer bidders and less competition. Those who take the time to browse these “off-category” listings can often find bargains, such as the following:

A #1917/361 Plainware round center handled sandwich tray in Avocado (a.k.a. Pomona) Green sold for \$5.

A faithful reader forwarded me an auction for a single Rooster muddler. The seller called it a “chicken on a stick.” It sold for the opening bid of \$5 and change.



A pair of #635 5 inch single candleholders in PeachBlo sold for \$10.

A pair of #227-1/2 low candleholders in Bluebell etched #704 sold for \$15. The seller photographed them upside down. For,

you see, the way to use these is to go to your local candle retailer and buy a couple of those scented candles in a jar, take off the lid, light them, and set the jar on the flat base of the candleholder, supported by the narrow portion. I mean... how *else* would one do it?



A pair of very unusual low candleholders with a slightly raised round base, an undocumented blank, etched Elaine, sold for \$16. The lucky winner indicates that these will be discussed in an upcoming feature in the Crystal Ball.

I did a comprehensive survey and asked NCC members what their favorite Cambridge pattern is. The result? WETHERFORD. Okay, okay... I totally made that up.



This pattern is kind of like the red-headed stepchild of Cambridge glass. But still, I saw a couple of interesting pieces of Wetherford during this reporting period: A covered powder jar (?) in Light Emerald brought \$20 in an incognito listing.

A covered syrup with applied twisted handle, also in Light Emerald, poured it on for \$38. This beauty was properly listed in the Cambridge category.



Animals

A Turtle flower frog (domed back version) sold for \$120.



A #3 novelty butterfly with an original label stunned, flitting away for \$150 after a total of 42 bids were placed.

A #1222 covered Turkey in Bluebell strutted around the eBay barnyard for months for an opening bid of \$600. It finally sold at the seller’s lowered price of \$450. A small chip was noted.



Etched Tableware and Stemware

Multiple bidders fought for a set of 6 #3400/92 optic ribbed whiskeys in PeachBlo etched Portia, which finally sold for \$64. This begs the question, where is the matching decanter these no doubt came with originally?



A seller offered two #7966 sherries with Hunt Scene etching at \$115, then lowered the price to \$98, and they sold.

A seller who seems to be selling off a collection of Amber Gloria etching offered a #3400/76 bulbous shaker plus a #3400/77 slender shaker, each with an Amber foot and crystal top, as a lot. The two (can’t call them a pair) sold for \$85. Have fun trying to make pairs out of THOSE.



Gold, Silver, and Enamel Decorations



A #842 Decagon 12-1/2 inch flared console bowl in Willow Blue, with blue enamel filled Rosalie etching and gold trim, sold for a mere \$40. Apparently there are only a few of us who think that colored enamel filled

etched Cambridge glass is totally neat-o. The same seller offered a set of 4 Round Ware 8 inch plates with dark blue enamel filled Willow etching. These sold for only \$48. Same comment.



A Round ware 10-1/2 inch service plate in Amber with #715 Willow etching with gold encrustation in the ancillary portions of the etching sold for \$45, despite a 1/4 inch crack.



A #1242 vase in Carmen with silver deposit decoration of grapes and vines plus some lines around the neck brought \$75.



An Amber #3400/68 cream & sugar etched and gold encrusted Minerva sold for a mere \$76, but I know someone who was quite happy that he didn't have more competition to win it.

An Ebony #225 vase (made from the same mold as the cocktail shaker) etched and gold encrusted #510 sold for \$225.



Miscellaneous

A pair of Cambridge Square hurricane candle lamps on bases were properly identified and appropriately listed, but these midcentury modern gems sold for only \$20. Why?



I seldom get to report on interesting Near Cut items. If you see any, feel free to forward them to me so that I won't miss them. A Near Cut #2764 9" Intaglio Rose Bowl Silver Etched Flowers and Leaves was picked for \$39.

An original 1930 Cambridge catalog sold for \$75.



A pair of La Rosa Pink #1338 triple candleholders sold for \$79 in an incognito listing, while another pair, properly listed, brought \$190.



A #680 vanity set with cover in Topaz (that's "vaseline" yellow, not Gold Krystol) sold for \$100.



A pair of #1402/76 Tally Ho 5 inch candleholders Royal Blue, each with an original label, sold for \$100.

A #165 Caprice 3-footed covered candy in La Rosa Alpine, brought \$133.

A 13 inch Draped Lady flower arranger in Moonlight Blue bucked the low-price trend on figural flower frogs, garnering \$199.



An early Cambridge Near Cut #2836 1/2 gallon Fish Tankard was offered for a \$300 opening bid, but the "listing was ended by the seller because the item is no longer available." Hmm...

A set of 3 handled footed ice teas in Rubina surprised me, reaching a hammer price of \$333. The color spectrum on these was definitely very good.



A #46 Sea Shell 7-1/2 inch flower holder in Royal Blue brought a surprising \$400.

One seller offered both the one-bun and the two-bun Geisha figurines in Light Emerald, each priced at \$500 Buy It Now. Both sold!

Finally, a #1298 13 inch vase in Amber etched Gloria with crystal foot sold for an eyebrow-raising \$575. When I saw the listing and the offering price, I scoffed, but it sold!



That's all for now. If you see any interesting Cambridge glass on eBay that you think I should be watching or reporting on, or if you have any other input, feel free to contact me at LAGlass@pacbell.net. I am well aware that I don't catch every interesting listing, especially those that turned up in a category other than Cambridge.

Until next month, happy Cambridge hunting!

NCC Events

**2020 Benefit Auction
Saturday March 14, 2020**

**2020 NCC Convention
June 24-27, 2020**

Member Benefit

Each NCC household is allowed one free 20-word classified ad in the Crystal Ball per calendar year as part of their membership. This can be a "For Sale" or "Wanted" type of classified ad. Submit your ad by email to editor@cambridgeglass.org

CLASSIFIEDS

Nothing this month, send in your request



*Let's Retain and
Recruit new members*



Only you can help us grow

January 18-19, 2020

Cartersville Looking Glass Show & Sale
Elegant and Depression Glass, China & Pottery
Cartersville Civic Center / 435 W Main St
Cartersville, GA 30120
<http://www.meyershows.com>

Glass Shows

January 25-26, 2020

South Florida Depression Glass Club
Vintage American Glass and Pottery Show & Sale
Florida Atlantic University / 777 Glades Rd
Boca Raton, FL 33431
<http://www.sfdgc.com>

January 25-26, 2020

Jacksonville Antique and Depression Glass Show and Sale
Fraternal Order of Police Building / 5530 Beach Blvd
Jacksonville, FL
904-669-0863
<http://www.depressionglassclubjax.com/>

February 1-2, 2020

International Depression Glass Club
Vintage Glass, China & Pottery Sale
Scottish Rite Temple (back to previous location)
6151 H Street
Sacramento, CA
<http://idgc.org/glassshow.php>

February 8-9, 2020

Clearwater Elegant & Depression Glass Show & Sale
Morningside Recreation Complex
2400 Harn Blvd.
Clearwater, FL
Call: 860-614-7133

February 14-16, 2020

Houston Glass Show & Sale & The Best Little Antique Show in Texas
Fort Bend County Fairgrounds
Hwy 36 and Hwy 59
Rosenberg, TX
<http://www.maxmillerantiques.com>

February 29, 2020

43rd Annual Green River Glass Show & Sale
Kent Commons
525 4th Avenue N.
Kent, WA
kayswede@msn.com

March 14-15, 2020

The 20-30-40 Glass Society 48th Annual Glass Show & Sale
The Concord Plaza Midwest Conference Center
401 West Lake St.
Northlake, IL 60164
<http://20-30-40glassociety.org/>

DEALER DIRECTORY

Dealer Directory - \$24 for 12-months, size limited by box (see below). Includes listing on NCC website.

Advertising Rates:

1/8 page \$15 1/4 page \$20
1/2 page \$30 Full page \$50

Electronic submissions should be emailed to:

editor@cambridgeglass.org

Use Word. Mailed submissions and all payments should go to PO Box 416, Cambridge, OH 43725. Deadline is 10th of preceding month. Ads must be paid in advance. Show listings are FREE; send info to PO Box or e-mail address 60 days before event.

Be sure to tell dealers that you saw their ad here.

Heirloom Glass Antiques & Gifts
Large Selection Of Cambridge
13411 Columbia Hwy.
Lynnville, TN 38472
www.heirloomglass.net 931-446-5492
juanita@heirloomglass.net

CRYSTAL LADY
1817 Vinton St. Omaha, NE 68108
Bill, Joann and Marcie Hagerty
402-699-0422

Specializing in Elegant Glass & Collectibles
www.crystalladyantiques.com

ISAACS ANTIQUES
(740) 826-4015

☞ located in ☜

Penny Court Mall
637 Wheeling Ave
Cambridge, OH

Glen & Carolyn Robinson
White Rose Antiques
Specializing in Depression Era Glassware

2454 McFarland Road
York, SC 29745

803-684-5685
gandcrobinson@aol.com
whiteroseglassware.com

CRYSTALLINE COLORS
Cambridge • Fostoria • Elegant Glass
Penny Court Mall, Cambridge - 2 booths
Medina Antique Mall
Medina, OH (I-71, exit 218)

Lynne R. Franks 216-661-7382



Connecting Buyers & Sellers!

Tell us what you are looking for and we help find it.

CAMBRIDGE GLASS.US

P. Snyder 740-601-6018

E-Mail and Find Your Glass!

E-Blast

psnyder@cambridgeglass.us
www.cambridgeglass.us

When you are searching for Cambridge glass, email your request and it is emailed to all members and dealers.
P. Snyder, 1500 Edgewood Dr., Circleville, Ohio 43113

Virtualattic at The Glass Chalet

Specializing in
Elegant Depression Era Glass

Sandra L. Bridwell-Walker

PO Box 726
Newcomerstown OH 43832-0726
817-659-0328
virtualattic7@gmail.com theglasschalet@gmail.com

Max Miller
Elegant American Glassware
www.maxmillerantiques.com

The Market Place 713-410-4780
10910 Katy Freeway.
Houston TX 77043 mmxglass@aol.com

BAKER FAMILY MUSEUM
805 CUMBERLAND ST.
CALDWELL, OHIO 43724
740-732-6410

bakermuseumnellbaker@msn.com
Wed & Thurs 9-4; Fri - Sat 9-5

MARGARET LANE ANTIQUES

2 E. Main St. New Concord, OH 43762
Lynn Welker (740) 705-1099

Cambridge Glass Matching Service
Hours: Mon-Fri 10-12 AM, 1-5 PM
or by appointment

Our House Antiques

Linda and David Adams

Las Vegas, NV

1-800-357-7169

www.OurHouseAntiques.com

email: David@OurHouseAntiques.com



Bobbi's Place INC

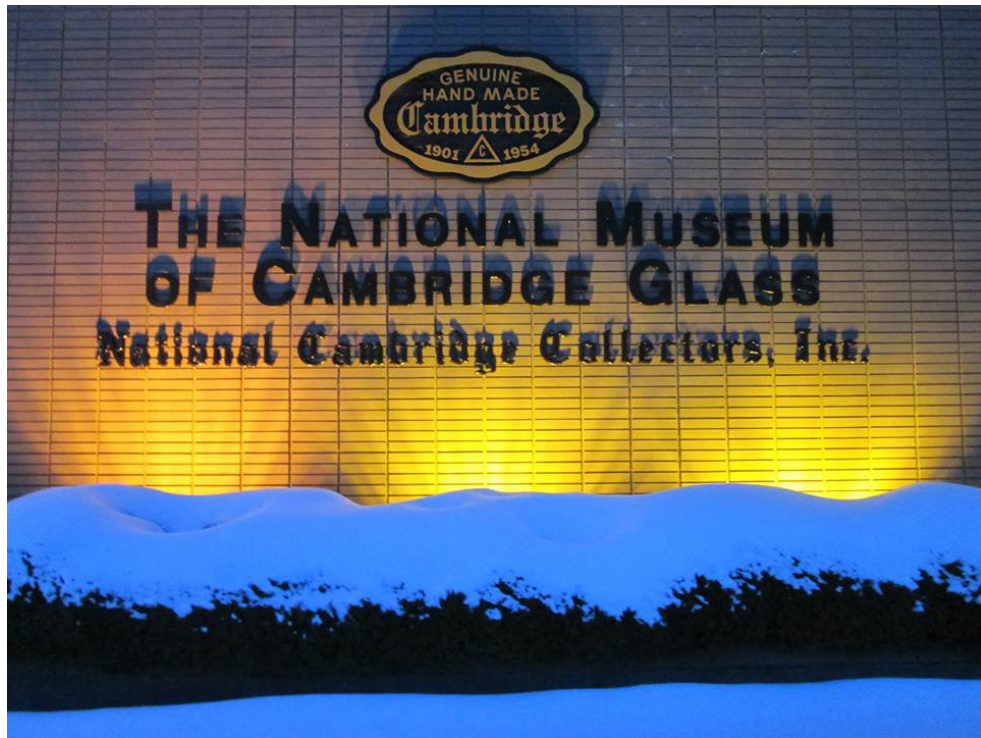
Elegant Glassware & Fine Antiques

Angela Honeycutt
Owner

P.O. Box 548
Hartville, OH 44632
330.546.3643

bobbisplace31@gmail.com

National Cambridge Collectors, Inc.
PO Box 416
Cambridge OH 43725
email: editor@cambridgeglass.org
website: www.cambridgeglass.org



***The National Museum
of
Cambridge Glass***

***Open April thru October
only***

