



# Cambridge Crystal Ball

Published by the National Cambridge Collectors, Inc. as a resource which informs, invites and inspires people to encourage the continued preservation of the glass produced by the Cambridge Glass Company of Cambridge, Ohio for future generations.

Issue No. 529

ISSN 2474-5987

June/July 2019

## Bits & Pieces From “Special Order Book”

By Mark Nye

Thanks to the late Mary Martha Mitchell, one of the documents surviving the Cambridge Glass Company is a notebook known as the “Special Order Book.” This was a book in which non-standard orders and orders with special pricing were recorded. Many of the orders recorded were for items the purchaser was to use as a component in his finished product, add decorative material such as silver, use as a special promotion or for use as gift items. Dates were almost always recorded but the quantities ordered were not always recorded.

What follows are a few selected entries from this book. How many of these items have survived the ensuing years since the order was placed, made and shipped is an unanswered question. No doubt at least a few have, so keep your eyes open. As shown here, each listing consists of the buyer’s name, location (city and state), and the item ordered with decoration(s) requested.

- Agar Mfg. Co. Whippany, NJ – 391 Ebony Ash Tray, gold decorated like their sketch. June 1941
- Cavalier Glass Co. Long Island City, NY - 518 Figure, plain, with grooved base June 1941
- Cavalier Glass Co. Long Island City, NY – 115 Figure, plain with grooved base. July 1941
- Crystal Lamp Co., New York, NY – Pristine 500 candlestick, no foot, 50 dozen. September 1941
- Dunkirk Silversmiths, Meriden, CT – 3900/115 Jug, to fit fitter. August, 1949
- Hamilton Silver Co., New York, NY – 1568 arm only comp. with bobèche and prisms December 1941
- Charles M. Henry Printing Co. Greensburg, PA – Numerous items to be “made with etched satin

spot for photograph. These included 1321 decanter, 496 tumbler, 1380 decanter, P101 cocktail shaker, 3900/114 martini mixer, 3797 vase.

- Carl W. Klotz, Canton, OH – 0592 Beer mug, lettered “Trail Café”
- Lord & Taylor, New York, NY - 1379 Decanter, engraved Manhattan. July, 1953
- Montana-Dakota Utilities Co., Minneapolis, MN - 572 Vase, Decorated special
- L & C Mayer Co., Inc. New York, NY – 3122 stemware E/Diane w/crest on foot March 1943
- Peasler-Gaulbert Corp., Louisville, KY - 969 Cocktail icer, Em., #1 shallow liners only Em., 1942
- Trader Vic, San Francisco, CA – 3011 cocktail, Crystal bowl & foot, Ebony stem. 200 doz. lot. Aug 1943. ■

### *What’s Inside*

Bits & Pieces From the “Special Order Book” . .	1
President's Message . . . . .	3
Who Visits the Museum - Members & Friends .	4
Convention 2019 Entertaining with Cambridge. .	7
Convention 2019 Schedule . . . . .	8
Convention 2019 Registration . . . . .	10
Bloopers - Part 2 . . . . .	11
eBay Report . . . . .	12
Do You Know Your Roses? . . . . .	14
New Members. . . . .	18

# National Cambridge Collectors, Inc.

PO Box 416 Cambridge, OH 43725-0416

## Board of Directors

	2019	
Rick Jones	Lindy Thaxton	Lynn Welker
	2020	
Cindy Arent	Larry Everett	Sharon Miller
	2021	
Sandra Bridwell-Walker	Ken Filippini	Freeman Moore
	2022	
Julie Buffenbarger	David Rankin	Frank Wollenhaupt

## Officers

President	Freeman Moore
Vice-President	Ken Filippini
Secretary	Lindy Thaxton
Treasurer	Sandra Bridwell-Walker
Sergeant-at-Arms	Larry Everett

Director of Strategic Planning	Ken Filippini
Director of Human Resources	David Ray
Chair, Endowment Committee	David Rankin

## MEMBERSHIP QUESTIONS?

Please send address changes to:  
Membership - NCC  
PO Box 416  
Cambridge, OH 43725-0416  
or by e-mail to:  
[membership@cambridgeglass.org](mailto:membership@cambridgeglass.org)

## Vice President

Member Relations  
Convention  
Event Social Media  
Glass Dash  
Glass Show  
Study Groups  
Webmaster

## Member Services

Freeman Moore (acting)  
Freeman Moore, Membership Database  
( open )  
Alex Citron  
Larry Everett & Frank Wollenhaupt  
Sandra Bridwell-Walker  
Jeannie Moore, Study Group Coordinator  
David Adams

## Vice President

Campaigns  
  
Events  
  
Projects  
Publicity

## Development

Julie Buffenbarger  
Ken & Jane Filippini, Annual Fund Directors  
Larry Everett, Director of the Heritage Society  
Bev & Will Acord,  
Lynn Welker, Auction Managers  
Carl Beynon, Jeweler & Scotties Project Manager  
Jonathan Fuhrman

## Education

## Vice President

Crystal Ball  
Publications  
Media Productions  
Research

Larry Everett  
Freeman Moore, Executive Editor  
Mark Nye, Director of Publications  
Dave Rankin, Director of Media Productions  
Mark Nye, Archivist

## Museum

## Vice President

Public Operations  
Facilities & Grounds  
  
Inventory Management  
Collections  
Museum Gift Shop  
  
Archivist  
Museum Social Media  
Community Relations

Cindy Arent  
Lindy Thaxton, Director of Public Operations  
Cindy Arent,  
Joe Miller,  
Lindy Thaxton  
Lindy Thaxton, Director of Inventory Management  
Lynn Welker, Director of Collections  
Cindy Arent, Gift Shop Manager  
Lynn Welker, Gift Shop Manager  
Mark Nye, Director of Archives  
Cindy Arent, Director  
Cindy Arent

## Administration

## Vice President

Accounting & Finance  
Information Technology

Sandra Bridwell-Walker  
Lisa Neilson, Office Manager  
(vacant)



## CONTACT US

Phone: 740 432-4245  
[nccglass@yahoo.com](mailto:nccglass@yahoo.com)



Freeman Moore, President  
e-mail: [president@cambridgeglass.org](mailto:president@cambridgeglass.org)  
Lindy Thaxton, Secretary  
e-mail: [secretary@cambridgeglass.org](mailto:secretary@cambridgeglass.org)

## Heritage Society

*Ensuring the preservation mission of the NCC through planned giving and estate bequests.*

Members of The Heritage Society are those who have included the NCC in their wills or estate plans, thus providing the organization with a secure future.

The mission of The Heritage Society is to foster smart estate planning and to assure that NCC is not forgotten as an important beneficiary. Any pledge is meaningful and appreciated.

All Cambridge collectors - both current and future - will benefit from, and be grateful for your support.

Let us know how we can help with your future plans.

NCC Website: [www.CambridgeGlass.org](http://www.CambridgeGlass.org)

Miami Valley Study Group Website: [www.mvsg.org](http://www.mvsg.org)



# PRESIDENT’S MESSAGE

## Your Support

*“Too much stuff, there’s just too much stuff  
It’ll hang you up dealing with too much stuff”\**

I was recently informed that a couple will not be renewing their membership because, due to age, they are no longer actively seeking new pieces for their collection. Your support of National Cambridge Collectors is more than a “membership”; you are a Friend of Cambridge.

Think of NCC as an arts organization or public broadcasting, where you are supporting the goals of the organization. You’re not really paying for a membership; instead you are supporting the goals of the organization.

NCC exists to educate and preserve information about the Cambridge Glass Company for future generations. Your decision to support NCC should reflect on your philanthropic goals. Some members contribute at the patron level while others are able to contribute at the higher benefactor levels. Hopefully, we are your favorite 501(c)(3) tax deductible organization. The Annual Fund materials were mailed out in early April solicited your annual support as well as seeking your votes for the board of directors.

As for the couple above, I replied back to them with the thoughts above. I also mentioned receiving the Crystal Ball was one way to keep connected with organization, and the chance to learn about new topics, which is always fun. David Adams updates our website as new information is available and is always looking for your pictures to add to the website.

But what do you do if you have too much stuff? One of the popular items at the museum gift shop around the Christmas holiday season, are ornaments made from damaged pieces of glass. They can use your donation of broken items and transform them into ornaments, or perhaps a piece of jewelry. You could also consider donating items to the museum to complete the collection or for resale in the gift shop.

If you’re not familiar with the Heritage Society listed on the previous page, let me expand on it. The mission of The Heritage Society is to foster smart estate planning and to assure that NCC is not forgotten as an important beneficiary. Any pledge is meaningful and appreciated. It’s just a pledge, not a contract, yet it is another way to ensure long-term funding for the NCC’s Endowment Fund. Consider it a voluntary gesture of support. Let me know if you need more details about donating “your stuff.”

### Other items:

This is the time of year to get excited about visiting Cambridge Ohio to participate in the annual convention and related activities. It’s the one time of year that Jeannie and I make this a driving trip from Texas. I know a lot of our members are not able to attend our annual convention due to health, work or distance reasons. It is quite a drive from Texas to Ohio and involves stopping at numerous antique shops along the way. There will be plenty of opportunities for you to reconnect with old friends, make new friends, and yes, look at a vast assortment of glass. Hopefully, everybody will find unique pieces to take home. As usual, check the NCC website for the latest information about the annual convention. We’ll have a summary of convention activities in the September Crystal Ball.

If I don’t see you in Cambridge Ohio in June, maybe I’ll see you at the National Depression Glass Association show in Lee’s Summit Missouri July 13-14. NCC will have an information table there and we could use some volunteers to staff the table for an hour or two. Let me know.

If you’re planning ahead, the Fall membership meeting will be October 19. Details will be forthcoming.

Let’s share the positive message about being a Cambridge glass collector.

Freeman Moore  
[president@cambridgeglass.org](mailto:president@cambridgeglass.org)

\* *“Too Much Stuff”*,  
song by Delbert McClinton, 1997

# Who Visits the Museum? *Members, Friends and New Friends!*

By Cindy Arent

Since the last issue of the Crystal Ball, we have greeted many members, friends and met several new friends. We never know who is going to walk through the door; each day is a new adventure. For example, one morning our first visitor of the day was member Penny Reed of Des Moines, Iowa. What a nice surprise!

The Alpha Pi Sigma Sorority planned a tour of the museum in late April. They were from the Byesville, Ohio area and most had never been to the museum. We were excited to discover that a member of their group had worked at The Cambridge Glass Company in the etching department painting the wax. Mary Ann Foraker Milton shared a story about how she got her job. She said that she would go to the factory every day and wait to see if she would be chosen to work. After several tries, Mary Ann was given a full time job.

On May 8<sup>th</sup>, the National American Glass Club arrived for a tour. The NAGC is an international non-profit educational organization founded in 1933 for glass collectors, dealers, artists, educators and all those concerned with the study and appreciation of glass, regardless of type, period or origin. The group had their seminar in Pittsburgh, PA and planned a day trip including four glass museums. They were very interested in Cambridge Glass and we received several compliments.

Three kindergarten classes from Secrest Elementary came to the museum in May to learn about how Cambridge Glass was made, some history and how to play marbles. When the bus arrived, half of the students came into the museum and the other half visited the Cambridge Fire Department, adjacent to the museum, to learn about fire safety. We then exchanged groups. It is wonderful to have such good neighbors surrounding the museum!

As the students were leaving, a group of travel writers and bloggers arrived. They were participating in a three day Southeast Ohio Media FAM Tour of Cambridge, Marietta and Morgan County, Ohio. The National Museum of Cambridge Glass was the first stop on their tour.

Sydney McGlumphy, a student at the Mid-East Career and Technology Center, contacted us about a filming a short documentary at the museum for her class assignment. Sydney took several photos, video and was required to include two interviews. When her project is complete, she will share it with us. Also filming at the museum in May was the team from AVC Communications. Each year, our grant from the Cambridge/Guernsey County VCB allows us to participate in Discover Cambridge. This project features area attractions and restaurants and is available on demand at [www.yourradioplace.com](http://www.yourradioplace.com).

Cambridge Glass has been receiving a lot of good publicity recently. In the May issue of Crossroads Magazine, an article "The Big Apple Loves Cambridge Glass" by Marcia Hartman was featured. We will have copies available at the museum during convention. You can also go to [https://issuu.com/journal-leader/docs/cr\\_may.indd](https://issuu.com/journal-leader/docs/cr_may.indd) to read the article that begins on page twelve.

See you at the museum!



Many thanks to our Heisey Museum friend, Michael Maher, for sending this Hollywood Cambridge Glass sighting! Judy Garland is pictured with a Cambridge centerpiece featuring a pair of Star Candlesticks and a Crystal Caprice plate covered with flowers.



NCC member Penny Reed of Des Moines, Iowa stopped by the Museum for a tour. Thank you for visiting, Penny!



Mary Ann Foraker Milton worked at The Cambridge Glass Company in the Etching/Painting department. She is a member of the Alpha Pi Sigma Sorority that toured the museum. Mary Ann is shown in the Museum Sample Room looking at the many pieces that she could have painted during her employment at the company.



Sydney McGlumphy, a Digital Media student at the Mid-East Career and Technology Center, learned about Cambridge Glass as she was taking photos and video at the museum.



Adam Green of AVC Communications took some wonderful footage at the museum while filming for Discover Cambridge. Cindy Arent, Bob Reardon and Lindy Thaxton assisted with the project.



Lindy Thaxton (center) portrayed Bessie Noble, who was an employee at Cambridge Glass Company in the early 1900s, when the National American Glass Club visited the museum in May.



The visitors enjoyed eating their pastries from Cambridge Glass. (L-R) Sharon Bachna, Marybelle Teters, Reggie Gerko and Betty Davis (standing at the sink) washed all the glassware after the tour group left.



Sharon Miller helped the students with their etching project.



A group of travel writers and bloggers visited the museum and we have already seen museum photos posted on their social media links. Many thanks to the Cambridge/Guernsey County VCB for arranging the tour.



It takes practice to be a glass blower!



Kindergarten students had fun at the museum and were so well behaved.

# *Entertaining with Cambridge!*

*by Freeman Moore*

We are pleased to announce the start of registration for 2019 Convention – *Entertaining with Cambridge*.

Our convention activities will provide ample opportunities for you to socialize with friends as well as educational programs to learn something new. Sandy Bridwell-Walker is coordinating the show activities, so there will be ample dealers offering glass from all companies to tempt your checkout. Another opportunity to make that special purchase is at the Glass Dash held Saturday morning.

My thanks to Sharon Miller for coordinating our meal events. She worked with Theo's to create this year's dinner menus. We were able to hold the line pretty well on costs. The costs you see on the registration form for food and registration is the same as 2018. If anyone needs a special meal, please let us know. We will make it work for you.

It wouldn't be convention without a fund raiser. Julie Buffenbarger is coordinating this activity. Please read her announcement and help out with a donation or bidding process.

Our first educational program will be "Cambridge Optics." Expected to be wow-ed at the examples, and also come away with an understanding of techniques. Saturday evening, we will have the opportunity to learn about the new Duncan & Miller Glass Museum in Washington, PA.

*Entertaining with Cambridge* has numerous possibilities. You've seen examples of Cambridge in Hollywood, but be on the look for using Cambridge glass in everyday settings. Have you seen examples of table settings with Cambridge glass in old cookbooks?

Jeannie Moore is still seeking volunteers for the Thursday night centerpieces. Here is a chance to illustrate how to decorate with Cambridge. Some people have expressed reluctance about doing a centerpiece because they travel a distance and flowers will die. Check out the assortment of plastic flowers at your local dollar store. Contact her at [Jeannie\\_Moore@verizon.net](mailto:Jeannie_Moore@verizon.net)

Mark your calendars and we will see you in June! Please register early if you can! Catering counts must be turned in by June 14. ■

## **Endowment Fund Mini-Auction**

*Returning to an NCC Convention timeless tradition!*

A mini-auction will be held on Thursday, June 27<sup>th</sup>, following the dinner buffet. All proceeds will go toward the Endowment Fund which supports the mission of the National Cambridge Collectors.

The endowment committee is requesting members' consideration in donating a quality Cambridge glass piece with a market value of approximately \$50 or more for the mini-auction.

Please contact Julie Buffenbarger at [Julie\\_buffenbarger1537@gmail.com](mailto:Julie_buffenbarger1537@gmail.com) or by phone at 216.701.1537, if you are interested in providing a donation.



One example will be this #748 12" oblong footed Peach-Blo signed bowl.





# Entertaining with Cambridge

## 2019 NCC CONVENTION

### PRESENTLY SCHEDULED

(Programs subject to change in time and topic)

#### WEDNESDAY, JUNE 26

**5:00 pm**      **WELCOME TO CAMBRIDGE** - on your own

#### THURSDAY, JUNE 27

**9:00 am**      Registration Opens      National Museum of Cambridge Glass  
**5:00 pm**      Cocktail Reception/**Meet our Glass Dealers**      Pritchard Laughlin Galleria  
**6:00 pm**      Opening Dinner Buffet, **Endowment Fund-Raiser**      Pritchard Laughlin Galleria  
**7:30 pm**      **Keynote: "Cambridge Optics"**      Pritchard Laughlin Conf Room

#### FRIDAY, JUNE 28

**8:00 am**      Advance Numbers for Show Admission      Pritchard Laughlin Galleria  
**8:00 am**      Registration Opens      Pritchard Laughlin Galleria  
**9:00 am**      First Timers and Mentors Program      National Museum of Cambridge Glass  
**Coffee with Cambridge- meet our 1st Timers!**  
**12:45 pm**      **Those with advance numbers may line up**      Pritchard Laughlin Galleria  
**1:00 pm**      Glass Show Opens      Pritchard Laughlin Exhibit Hall  
**5:00 pm**      Glass Show Closes  
**5:00 pm**      Cocktail Reception/President's Circle Salute      Pritchard Laughlin Galleria  
**6:00 pm**      **Banquet Dinner & Annual Meeting**      Pritchard Laughlin Galleria  
Awards Presentation  
**7:45 pm**      **Bring & Brag and Glass ID**      Pritchard Laughlin Conference Room

#### SATURDAY, JUNE 29

**7:00 am**      Glass Dash - Early Bird Admission      St. Benedict's Gymnasium  
**8:30 am**      Glass Dash - Regular Admission      St. Benedict's Gymnasium  
**10:30 am**      Glass Show and Sale      Pritchard Laughlin Exhibit Hall  
**12:15 pm**      **Display Case Review**      Pritchard Laughlin Galleria  
**2:00 pm**           Pritchard Laughlin Exhibit Hall  
**5:30 pm**      Closing Cocktail Celebration      Pritchard Laughlin Galleria  
**6:00 pm**      **Closing Dinner: Taco/Fajita Buffet**      Pritchard Laughlin Galleria  
**7:30 pm**      **Closing Program: "Duncan & Miller Museum"**      Pritchard Laughlin Galleria

*CONVENTION PACKET PICK-UP: Wed: 3:00 - 4:00 Museum;  
Thurs: 9:00 - Noon Museum; 4:30 - 6:00 PLCC; Fri: 8:00 - Noon PLCC;*





# *Entertaining with Cambridge*

**2019 NCC CONVENTION – 46<sup>th</sup> ANNUAL**

**June 26<sup>th</sup> through June 29<sup>th</sup>, 2019**

## *Registration*

We hope to see you all this June for another fun Convention. The theme this year is **Decorating with Cambridge**, which offers numerous ideas. How can you decorate the living room, dining room, kitchen, and other rooms in colorful and creating styles? **Once again, you can register online AND WE ENCOURAGE YOU TO DO SO. Registration is due by June 1, 2019.** If you prefer the traditional way, you can send your check payable to NCC, Inc. along with the completed registration form to:

**National Cambridge Collectors, Inc.  
Convention Registration  
P. O. Box 416  
Cambridge, Ohio 43725-0416**

Each person registering for the convention pays the \$26.00 registration fee which helps cover the cost of facility rental. Your registration fee includes admission to the NCC Glass Show and Sale and all other scheduled events. Please register for all events you plan to attend, including those offered at no charge. For children under ten years of age, there is no registration fee; however, they must pay for any meals they attend.

**Show dealers and President Circle members – there will be no registration fee.**

Please list each person registering separately. Names should be given as you wish them to appear on your name badge. Please provide your membership number and your email address on the registration form. If registering for more than three persons, list additional members on a separate sheet or the space provided below.

**All registrants will receive an email confirmation of their registration. And PLEASE, register electronically as it helps your Convention organizers IMMENSELY!**

After April 7, look for:

**"Convention Registration"** on the NCC website <http://www.CambridgeGlass.org>

### **Cancellation Policy**

Written Cancellation up to 30 days before first convention event – full refund.

Written Cancellation up to 15 day before first convention event – full refund less \$10 handling fee.

Written Cancellation up to 5 days before first convention event – refund meals only.

Written Cancellation less than 5 days before first convention event – no refund.

# Entertaining with Cambridge

2019 NCC CONVENTION – 46<sup>th</sup> ANNUAL

June 26<sup>th</sup> through June 29<sup>th</sup>, 2019

## Registration Form

<i>Name of Conventioneers</i> <i>(As you wish it to appear on your Name Badge)</i>	<i>Membership Number</i>	<i>First Convention</i>	
_____	_____	Yes	No
_____	_____	Yes	No
_____	_____	Yes	No

Address: \_\_\_\_\_

Email address \_\_\_\_\_ Phone Number (\_\_\_\_\_) \_\_\_\_\_  
*(Registration confirmation will be sent via email when the above information is provided)*

<i>ACTIVITY</i>	<i>FEE</i>	<i>NUMBER ATTENDING</i>	<i>TOTAL</i>
<i>Registration (postmarked by June 1 please)</i>	\$26.00	_____	_____
<i>Dealer or President's Circle</i>	N/A	_____	_____
<b><i>Thursday Opening Dinner*</i></b> <b><i>Pritchard Laughlin Galleria</i></b> <i>Pasta Bar Buffet: Spinach &amp; Cheese Lasagna, Meat &amp; Cheese Lasagna, Parmesan Encrusted Chicken, Three Kinds of Pasta, Four Sauces, Sautéed Veggies, Family Style Salad, Breadsticks, Ice Cream Sundae, Beverages</i>	\$18.00	_____	_____
<b><i>Friday Banquet Dinner, Annual Meeting and Awards*</i></b> <b><i>Pritchard Laughlin Galleria</i></b> <i>5-Cheese and Bacon Stuffed Chicken Breast, Carved Beef Tenderloin, Parsley Red Potato, Caribbean Blend veggies, Family-Style Salad, White Chocolate/Raspberry Cheesecake, Chocolate Lasagna, Bread &amp; Beverages</i>	\$33.00	_____	_____
<b><i>Saturday Dinner*</i></b> <b><i>Pritchard Laughlin Galleria</i></b> <i>Taco/Fajita Buffet: Taco Meat, Fajita Chicken, Grilled Peppers &amp; Onions, Rice, Beans, Nacho Chips, Melted Cheese, Salsa, Soft and Hard Taco Shells, Condiments, Variety of Pies, Beverages</i>	\$18.00	_____	_____
		<b>TOTAL</b>	_____
<b><i>First Time Orientation and Coffee with Cambridge</i></b>	N/A	_____	



\* Meals include iced tea, coffee, taxes and gratuity. Cocktails are available for an additional charge. Please contact us at [Convention@cambridgeglass.org](mailto:Convention@cambridgeglass.org) if special meals are required due to dietary restrictions.

***Any additional comments, information, special needs (e.g. gluten free, non-meat), or registrants?***

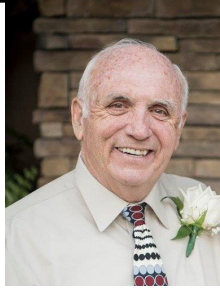
\_\_\_\_\_  
 \_\_\_\_\_

*By registering for this event, I give permission to take photographs and/or video recordings of me and or my guest during this event for future use in NCC communications. I release NCC and its entities from any liability or obligation that may arise as a result of the use of the images.*

## In Memoriam

We will miss the laughter of a Friend of Cambridge at convention this year.

Steve Klemko passed away in April. He and his wife Helen have been members of NCC and NCC show dealers for many years. Steve loved Cambridge Glass and shared his time with other passions for golf, cruising, hunting, fishing, and training bird dogs.



He and Helen have a great collection specializing in Crown Tuscan, Ivory, Flying Lady Bowls with matching 3011 candelabra, silver decorated pieces, and many things that just caught his eye. At a show, Steve would always show up holding a prize in his hand and wait for reactions from his friends before he opened up with a big smile and shared how much he enjoyed the piece. His laugh was his trademark. If you find the Forest Green 3011 candelabra (bobeche and prisms), he still needs them for the collection.

## "Bloopers - Part 2"

You're out shopping and see something that is obviously Cambridge glass but you look closer, and huh??? The tag doesn't match what you know. Check out these recent submissions.



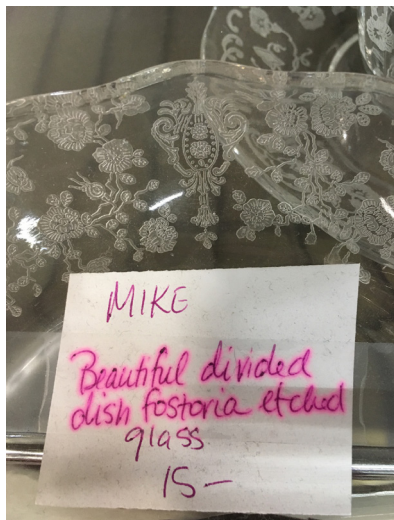
Vintage Light Blue Glass  
Footed Scallop Design Cover  
Vanity Soap Dish \$18.50

It is a Caprice #207 Cigarette  
Box and Cover.

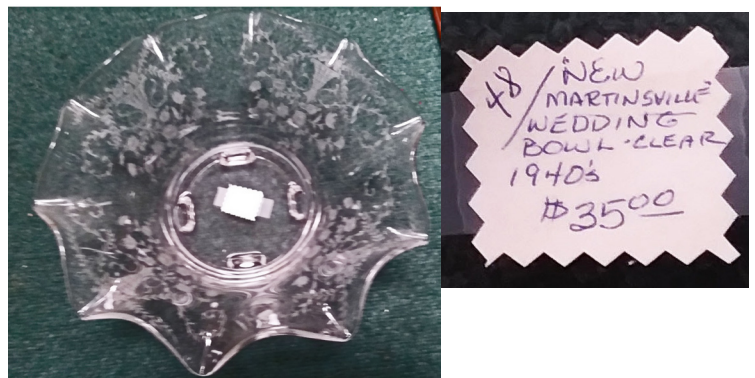


Paden City Covered Candy \$45.00

This is a 3500/57 3 part covered candy,  
but made by Summit Glass Company.  
You can tell by the flat handles and the  
decoration.



A Beautiful divided dish Fostoria etched -  
not likely, since it is etched Rose Point.



Not a New Martinsville bowl, but really a  
Cambridge #1349 12" bowl etched Portia.

Welcome to the eBay Report. This column features Cambridge glass items that sold on eBay circa mid-April to mid-May, 2019. Selling prices have been rounded to the nearest dollar. If no color is mentioned, assume that the piece or part of it being discussed is crystal. Here we go:

## Statuesque (Nude Stem) Line

Three clarets with Forest Green bowls sold for the opening bid of \$100.



A Carmen stem listed as a “cordial” (which was likely a wine) likewise sold for the opening bid of \$80.

A pair of champagnes, one with Amber bowl, the other Amethyst, sold for \$115.



A brave seller offered a pair of 3011/63 9” candlesticks in Crown Tuscan with a 99 cent opening bid. They closed at \$150. The 3011/61 is the version that holds a bobèche with prisms.



More table goblets with an optic Heatherbloom bowl have surfaced. These have all sold for the same price, \$200 each. This pair followed the pattern, selling for the opening bid of \$400.

## Etched Tableware and Stemware

A #3400/67 5 part 12 inch celery and relish tray in Peach Blo etched Apple Blossom sold for a groan worthy \$15 in an incognito listing.



A single #3400/76 footed shaker with amber base and crystal top, etched Apple Blossom, sold for \$40. A nice item, but it's gonna take a while to find a mate for that. Then again... any eBay buyer can vouch that that marketplace has been a



boon for filling in sets, and finding items you hadn't seen at glass shows. With patience, a pair might be assembled.

One seller offered two #3500/41 10 inch covered urns etched Elaine in separate auctions. One sold for \$71; the other, \$66. The lid is heavily patterned in the mold, and was not etched. The glass had a slight age/sun coloration to it which might have contributed to the low price.



A #1402/29 - 17½ inch Cabaret Plate etched Diane sold for \$75.



## Gold, Silver, and Enamel Decorations

A Special Article #85 footed vase in Helio with gold encrusted Classic etching sold for \$82 with minimal gold wear.



A pair of #1298 13 inch vases with a Rockwell silver overlay decoration brought \$188.



## Miscellaneous

One seller posted a Royal Blue #3400/97 perfume with dropper stopper (listed as a #3400/38 cruet – which isn't the right line number for either the 2 ounce OR the 6 ounce oil, anyway) with an opening bid of \$30. Apparently, everyone [figuratively] stood there with hands in pockets, thinking, “Well, this one is gonna soar, so I won't bid.” Lo and behold, it sold for the opening bid. Let this be a lesson to all of us. It seems to me I saw the dauber stopper alone bring \$80 on eBay a few years ago!



A #1380 decanter etched Scotch, with the large spherical stopper dating to the 1950s production era, sold for \$45. This, after “selling” for about \$38 in a previous auction.



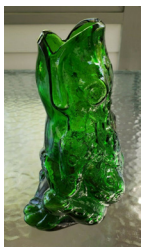
I forwarded the auction to the nephew I mentioned in my March report, but apparently he is satisfied to own just the one etched Gin. These darn kids! I wonder if the company made old fashioned tumblers with the juniper design on them to match? I'm looking.



A Mount Vernon #8 cream & sugar in Heatherbloom sold for \$95.

A #242 Caprice vase in Amethyst sold for \$80.

A Nearcut Marjorie covered cracker jar brought for \$95.



A Frog vase in Forest Green with a chip on the rim sold for the opening bid of \$99. This was the version with no applied handle, and the "warty" rather than the smooth skin. Can a reader please tell us what colors this piece was made in? I know of only Forest Green

and Ebony, which are of course the most naturalistic colors for a frog. But then, if you consider the very UN-naturalistic colors that the Cambridge covered turkey was made in, my theory about the frog vases is all wet.

An amber "prism" style Cambridge glass display sign sold for an even hunderdbux, while one in Willow Blue brought \$118. Minor condition issues were noted on both.



A pair #110 dolphin candleholders (the version with the square base and notched corners) in milk glass sold for \$150, while a pair in Royal Blue sold for \$181 -- a very reasonable price for ones in this color, I think.

A #20 Everglades vase with the design of tulips in high relief in Amber sold for \$195. This one was entirely shiny; no satinization of the flowers or the background, as you sometimes see. For comparison, the same vase in all-over satinized Crystal sold for only \$60.



A pair of #439 7-1/2 inch candlesticks in Rubina sold for \$199. In my opinion, this size (of the three made) is the hardest to find. This pair lacked any of the blue shading in the Rubina spectrum, an attribute I've noticed in some smaller pieces of Rubina.



Every month, I give a mental nod to a buyer who has snapped up something that I consider a connoisseur's choice. (Okay, sometimes the nod makes it into this column.) This time, it was the set of 8 5 inch Tuxedo footed tumblers with a Carmen foot, which sold for \$204. That might *seem* like a lot for such a plain item, but step back and really look at these. NOT something you're going to see in the China & Crystal offerings at your local department store anytime soon. These are proof that something doesn't have to be fancy to be beautiful.



An Ivory Rose Lady flower arranger on the early, tall, 6-scalloped and beaded base was offered for \$694, and failed to sell. It was noted there was a hairline on the reverse and small chip on base. This listing "was ended by the seller because the item is no longer available." Hmmm...

However, an 8 inch Rose Lady flower arranger on the standard low base in satinized Light Emerald sold for \$39 in an incognito listing. (By the way, it didn't sell the first time it was listed at that price. Whaaaaaat?)



Even worse, a large Draped Lady flower arranger in Light Emerald Green failed to sell for the opening bid of \$100.

That's all for now. If you see any interesting Cambridge glass on eBay that you think I should be watching or reporting on, or if you have any other input, feel free to contact me at [LAGlass@pacbell.net](mailto:LAGlass@pacbell.net). Until next month, happy Cambridge hunting!

# Do You Know Your Roses?

*June is National  
Rose Month*

Can you identify them?

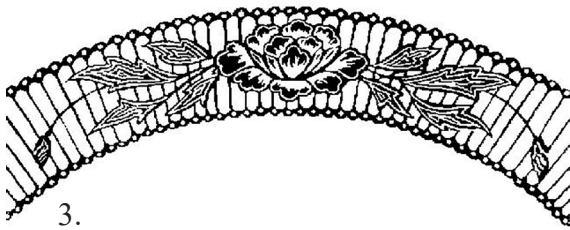
- 3015 Pressed Rose Point
- E527 Rose version 1
- E527 Rose version 2
- E722 Dresden Rose
- E755 Rose Marie
- E760 Rose Chintz
- RCE991 Rose Marie
- RCE Radiant Rose
- American Beauty
- Rose Point
- Roselyn



1.



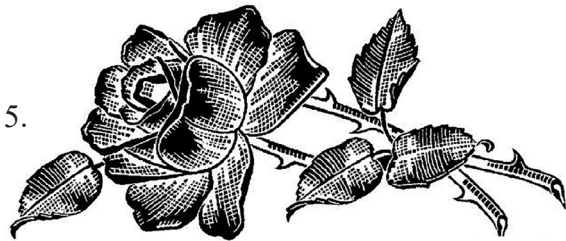
2.



3.



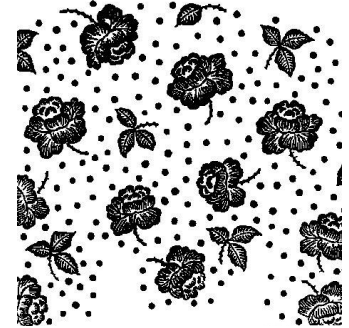
4.



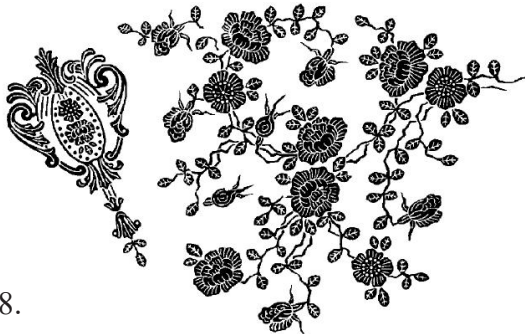
5.



6.



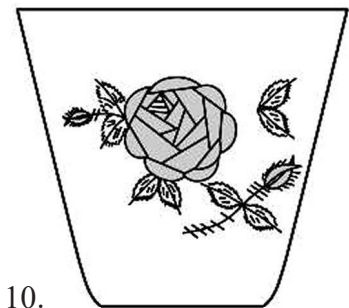
7.



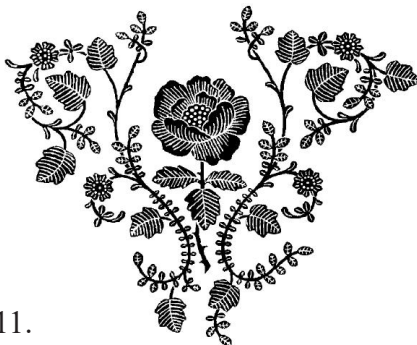
8.



9.



10.



11.

## EVERYTHING'S COMING UP ROSES

from GYPSY

Lyrics by STEPHEN SONDHEIM  
Music by JULE STYNE

Briskly

C B C A<sup>b</sup>7<sup>5</sup> C D<sup>9</sup> Gdim7 G7

Recruit  
and  
Retain

Give this page to a friend



The National Cambridge Collectors  
P.O. Box 416 ~ Cambridge, Ohio 43725

“FRIENDS OF CAMBRIDGE” MEMBERSHIP

The National Cambridge Collectors, Inc. (NCC) is a non-profit organization dedicated to the education and preservation of the great work of the Cambridge Glass Company. Founded in 1973, we depend on the financial support of our members, who we call **Friends of Cambridge**, for the majority of our operating budget. Won't you consider becoming a Friend of Cambridge? You can also complete this online at: <http://cambridgeglass.org/online/>

Friend #1 \_\_\_\_\_

Friend #2 \_\_\_\_\_

Friend #3 \_\_\_\_\_

(continue on reverse if needed - indicate any children and their year of birth, only those 18 and older residing in your household may vote)

Address \_\_\_\_\_

City/State/Zip \_\_\_\_\_

Email Address (required) \_\_\_\_\_

Phone Number \_\_\_\_\_

Crystal Ball newsletter delivery: \_\_\_ email (color) \_\_\_ paper (black & white)

Glass collecting interest: \_\_\_\_\_

New Member? (Y/N) \_\_\_ or Renewal? \_\_\_ If renewal, Member #s \_\_\_\_\_

*Levels of Membership*

Patron \$ 35

Century Level	\$ 100	Mardi Gras Level	\$ 200
Japonica Level	\$ 500	President's Circle	\$ 1,000

*All members receive the Crystal Ball, free Museum admission and 10% off any book/DVD purchases, President's Circle includes Convention registration for two members in the household and one free copy of any new NCC publication.*

All memberships are renewed annually via The Annual Fund mailing in late March/early April. All Annual Fund gift recognition levels are per household and include membership for everyone within the household 18 and older. Each household will receive a subscription to the Crystal Ball newsletter, unlimited admissions to the museum, and rights to vote in elections for the Board of Directors and discounts on NCC books. NCC is a 501(c)(3) organization and Annual Fund gifts are allowed as a tax deduction under Section 170 of the Internal Revenue Code. Contact your tax advisor for your individual situation.

Return this form with check or money order payable to NCC, Inc. at the above address.  
And always visit us at [www.cambridgeglass.org](http://www.cambridgeglass.org) to see what's new!

# For Sale - NCC Books and DVD

Published by NCC • Members receive a 10% discount

TITLE		REGULAR PRICE	MEMBER PRICE
1910 NearCut Catalog Reprint	108 pages, paperback, no price guide	\$14.95	\$13.45
1927-29 Catalog Reprint	66 pages, paperback, no price guide, includes identification guide	\$9.95	\$8.95
1930-34 Catalog Reprint	250 pages, paperback with 2000 price guide	\$14.95	\$13.45
1930-34 Catalog Index	Index for above	\$2.00	\$1.80
1949-53 Catalog Reprint	300 pages, paperback, no price guide	\$19.95	\$17.95
Cambridge Colors II (New)	Hardcover with price guide	\$19.95	\$17.95
Cambridge Rose Point – A Collector’s Guide		\$29.99	\$27.00
Caprice	200 pages, paperback, no price guide	\$19.95	\$17.95
Decorates	136 pages, paperback, no price guide	\$14.95	\$13.45
Etchings (2nd Edition)	102 pages, paperback, no price guide	\$17.95	\$16.15
Etchings, Non-Catalogued	70 pages, paperback, no price guide	\$12.95	\$11.65
Etchings: Blossomtime	26 pages, paperback, no price guide	\$7.95	\$7.15
Etchings: Candlelight	30 pages, paperback, no price guide	\$7.95	\$7.15
Etchings: Chantilly	44 pages, paperback, no price guide	\$7.95	\$7.15
Etchings: Diane	53 pages, paperback, no price guide	\$7.95	\$7.15
Etchings: Elaine	64 pages, paperback, no price guide	\$9.95	\$8.95
Etchings: Portia	57 pages, paperback, no price guide	\$7.95	\$7.15
Etchings: Wildflower	42 pages, paperback, no price guide	\$7.95	\$7.15
Rock Crystal Engravings	119 pages, paperback, no price guide	\$17.95	\$16.15
Rock Crystal Engravings (Listings)	Companion to above; lists all pieces in all patterns	\$9.95	\$8.95
Rock Crystal 1940 Illustrated Catalog & Price List		\$14.95	\$13.45
Rose Point - Second Edition	146 pages, paperback, no price guide	\$19.95	\$17.95
Pharmaceutical Catalog No.8 1915-1920 Reprint	68 pages, paperback, no price guide	\$9.95	\$8.95
Cambridge Arms compendium		\$7.95	\$7.95
1916 General Catalogue		\$13.95	\$13.95
Rose Point Program - DVD (Postage \$3.00)		\$19.95	\$17.95
Caprice Program - DVD (Postage \$3.00)		\$19.95	\$17.95

## How to Order by Mail or from the NCC Website

Send orders to:  
NCC • PO Box 416 • Cambridge, OH 43725

OHIO RESIDENTS PLEASE ADD 7.25% SALES TAX

SHIPPING:  
\$5.00 FOR THE FIRST PUBLICATION  
\$1.00 FOR EACH ADDITIONAL ITEM

Please include your name, complete mailing address and your phone number or e-mail address.

Payments by check or Money Order only, payable to NCC

Books may also be purchased on the NCC website,  
[www.cambridgeglass.org](http://www.cambridgeglass.org).

Major Credit Cards are only accepted for web purchases.





**20<sup>TH</sup> ANNUAL  
ELEGANT AND DEPRESSION  
GLASS SHOW AND SALE  
JULY 20 - 21, 2019**

**THE FAIRGROUNDS NASHVILLE  
500 WEDGEWOOD AVE. (GPS address)  
NASHVILLE, TN 37203**

**SATURDAY HOURS - 10 AM TO 5 PM**  
with Guest Speaker at 1 PM

**SUNDAY HOURS - 11 AM TO 3 PM**

**ADMISSION \$6 – GOOD FOR BOTH DAYS**  
For **FREE PARKING**, present this card at gate.

*FEATURING AMERICAN-MADE  
GLASSWARE AND POTTERY  
DEALERS FROM ACROSS THE COUNTRY*

FOR SHOW INFORMATION & UPDATES: (615) 856-4259  
Email: [fostoria\\_tn@bellsouth.net](mailto:fostoria_tn@bellsouth.net)  
[www.fostoria-tennessee.com](http://www.fostoria-tennessee.com)  
[www.facebook.com/fostoriaglass.tn](http://www.facebook.com/fostoriaglass.tn)

HOSTED BY FOSTORIA GLASS SOCIETY OF TENNESSEE



**WANTED**  
*Glass Dash Participants*

We are on the lookout for several interested glass dealers for the 2019 Glass Dash which will be held Saturday June 29, at the St. Benedict's Gym, the same location as the past several years. The dash is where everyone gets the same chance to add that rare item to the collection. We are looking for anyone that is wanting to reduce their collection or just has too much. This is a great venue to reduce your collection and add that rare item. If interested in joining the fun, please contact Frank Wollenhaupt by email at [fewvic303@sbcglobal.net](mailto:fewvic303@sbcglobal.net) or just give him a call at 937-475-2889.

National Depression Glass Association, Inc.  
45<sup>TH</sup> ANNUAL CONVENTION  
*Vintage, Decorative & Collectible*  
**Glass Show & Sale**  
Saturday July 13, 2019 10am – 5pm  
Sunday July 14, 2019 11am – 4pm

*The Pavilion at John Knox Village*

520 NW Murray Road  
Lee's Summit, MO 64081

Admission: \$8  
(Good Both Days)

Nationally Known Dealers  
Hourly Door Prize Drawings  
Educational Seminars & Displays  
Live Auction  
Silent Auction



*Information:* David Hollingshead 913-636-7825 [dgpremiums@yahoo.com](mailto:dgpremiums@yahoo.com)  
Mark Evans 816-308-7495 [mark.evans@windstream.com](mailto:mark.evans@windstream.com)

reciprocal ad



National Cambridge Collectors Inc  
Presents the 45<sup>th</sup> Annual

**NCC Glass Show & Sale**

Friday, June 28<sup>th</sup> 2019: 1pm-5pm  
Saturday, June 29<sup>th</sup> 2019: 10:30am - 4pm

Pritchard Laughlin Civic Center  
Cambridge, Ohio 43725



Featuring Glassware by Cambridge, Fostoria,  
Heisey, Duncan, Imperial, Tiffin, Morgantown  
and other Fine Glassware  
Admission: \$5 Good Both Days!

[www.cambridgeglass.org](http://www.cambridgeglass.org) for more information

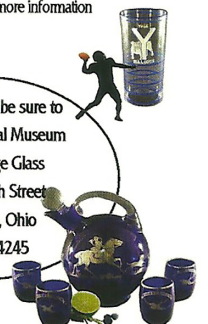


Glass Dash  
Saturday, June 29<sup>th</sup>  
7am Early Bird Admission \$10  
8:30am General Admission \$4  
St. Benedict's Gym  
233 N. 7th St.  
Cambridge, Ohio

While in town, be sure to  
visit the National Museum  
of Cambridge Glass  
136 South 9th Street  
Cambridge, Ohio  
740-432-4245



*Cheers!*



## NCC Events

**2019 NCC Convention  
June 26-29, 2019**

**2019 Fall Meeting  
Saturday October 19, 2019**

### *Member Benefit*

Each NCC household is allowed one free 20-word classified ad in the Crystal Ball per calendar year as part of their membership. This can be a "For Sale" or "Wanted" type of classified ad. Submit your ad by email to [editor@cambridgeglass.org](mailto:editor@cambridgeglass.org)

## CLASSIFIEDS

**WANTED:** Everglade or Nautilus pieces produced in Crown Tuscan. Contact David at 614-203-4118



*Let's Retain and  
Recruit new members*

NCC welcomes the  
following new members

Debbie Stearns

SC

### **June 6-9, 2019**

National Imperial Glass  
Collectors Society 43rd Convention  
National Imperial Glass Museum  
Bellaire, OH  
<http://imperialglass.org/>

**Glass  
Shows**

### **June 7-9, 2019**

Fostoria Glass Society of America Annual Convention & Show  
Moundsville Center Building  
Moundsville, WV. 26041  
<http://www.fostoriaglass.org>

### **June 12-25, 2019**

Heisey Collectors of American Annual Convention  
Reese Ice Arena  
Newark, OH  
<http://heiseymuseum.org>

### **June 22-23, 2019**

Tiffin Glass Collectors Club 34th Annual Show and Sale  
Tiffin Middle School  
Tiffin, OH  
<https://www.tiffinglass.org/>

### **June 28-29, 2019**

National Cambridge Collectors  
Annual Convention and Show & Sale  
Pritchard Laughlin Civic Center  
Cambridge, OH 43725  
<http://www.cambridgeglass.org>

### **July 13-14, 2019**

NDGA 45th Annual Convention Show and Sale  
The Pavilion at John Knox Village  
Lee's Summit, MO 64081  
<http://ndga.net>

### **July 20-21, 2019**

20th Annual Elegant & Depression Glass Show & Sale  
The Fairgrounds Nashville / 500 Wedgewood Ave  
Nashville, TN 37203  
<http://www.fostoria-tennessee.com>

### **July 24-26, 2019**

The Stretch Glass Society  
45th Annual Convention & Stretch Glass Show  
Marietta, OH  
<https://www.stretchglassociety.org/>

### **July 27-28, 2019**

43rd Annual Collectible Glass Show and Sale  
Cobb County Civic Center  
548 So. Marietta Pkwy.  
Marietta, GA 30060  
<http://www.psdgc.com>

# DEALER DIRECTORY

Dealer Directory - \$24 for 12-months, size limited by box (see below). Includes listing on NCC website.

## Advertising Rates:

1/8 page \$15      1/4 page \$20  
1/2 page \$30      Full page \$50

Electronic submissions should be emailed to:

[editor@cambridgeglass.org](mailto:editor@cambridgeglass.org)

Use Word. Mailed submissions and all payments should go to PO Box 416, Cambridge, OH 43725. Deadline is 10th of preceding month. Ads must be paid in advance. Show listings are FREE; send info to PO Box or e-mail address 60 days before event.

*Be sure to tell dealers that you saw their ad here.*

**Heirloom Glass Antiques & Gifts**  
*Large Selection Of Cambridge*  
13411 Columbia Hwy.  
Lynnville, TN 38472  
www.heirloomglass.net      931-446-5492  
juanita@heirloomglass.net

**CRYSTAL LADY**  
1817 Vinton St.      Omaha, NE 68108  
**Bill, Joann and Marcie Hagerty**  
402-699-0422

Specializing in Elegant Glass & Collectibles  
www.crystalladyantiques.com

**ISAACS ANTIQUES**  
(740) 826-4015

☞ located in ☜

**Penny Court Mall**  
637 Wheeling Ave  
Cambridge, OH

**Glen & Carolyn Robinson**  
**White Rose Antiques**  
Specializing in Depression Era Glassware

2454 McFarland Road  
York, SC 29745

803-684-5685  
gandcrobinson@aol.com  
whiteroseglassware.com

**CRYSTALLINE COLORS**  
*Cambridge • Fostoria • Elegant Glass*  
Penny Court Mall, Cambridge - 2 booths  
Medina Antique Mall  
Medina, OH (I-71, exit 218)

Lynne R. Franks      216-661-7382



**Connecting Buyers & Sellers!**

Tell us what you are looking for and we help find it.

**CAMBRIDGE GLASS.US**

P. Snyder      740-601-6018

E-Mail and Find Your Glass!

E-Blast

psnyder@cambridgeglass.us  
www.cambridgeglass.us

When you are searching for Cambridge glass, email your request and it is emailed to all members and dealers.  
P. Snyder, 1500 Edgewood Dr., Circleville, Ohio 43113

**Virtualattic at The Glass Chalet**  
Specializing in  
Elegant Depression Era Glass  
*Sandra L. Bridwell-Walker*  
PO Box 726  
Newcomerstown OH 43832-0726  
817-659-0328  
virtualattic7@gmail.com      theglasschalet@gmail.com

**Max Miller**  
**Elegant American Glassware**  
www.maxmillerantiques.com

The Market Place      713-410-4780  
10910 Katy Freeway.  
Houston TX 77043      mmxglass@aol.com

**BAKER FAMILY MUSEUM**  
805 CUMBERLAND ST.  
CALDWELL, OHIO 43724  
740-732-6410

bakermuseumnellbaker@msn.com

Wed & Thurs 9-4; Fri - Sat 9-5

**MARGARET LANE ANTIQUES**

2 E. Main St.      New Concord, OH 43762  
Lynn Welker      (740) 705-1099

Cambridge Glass Matching Service  
Hours: Mon-Fri 10-12 AM, 1-5 PM  
or by appointment

**Our House Antiques**

Linda and David Adams

Las Vegas, NV

1-800-357-7169

www.OurHouseAntiques.com

email: David@OurHouseAntiques.com



*Bobbi's Place INC*  
Elegant Glassware & Fine Antiques

*Angela Honeycutt*  
Owner

P.O. Box 548  
Hartville, OH 44632  
330.546.3643

bobbisplace31@gmail.com

National Cambridge Collectors, Inc.  
PO Box 416  
Cambridge OH 43725  
email: editor@cambridgeglass.org  
website: www.cambridgeglass.org



## Friends of Cambridge – Annual Fund

NCC exists through member giving using an Annual Fund system to raise operating funds and to ensure the preservation of Cambridge glass for future enthusiasts. The Annual Fund uses a common member "renewal" date and NCC sends out Annual Fund materials to everyone once a year. There are no monthly reminders or monthly renewal dates. The Annual Fund is NCC's primary means of support and all Annual Fund gift recognition levels are per household and include membership for all adults within the household. Additionally, each household will receive a subscription to the Crystal Ball newsletter, unlimited admissions to the museum, and rights to vote in elections for the Board of Directors. Multiple households at the same address are welcomed. NCC is a 501(c)(3) organization and Annual Fund gifts are allowed as a tax deduction under Section 170 of the Internal Revenue Code.

### Levels of Membership

Patron	\$35
Benefactor - Century	\$100
Benefactor - Mardi Gras	\$200
Benefactor - Japonica	\$500
President's Circle	\$1,000

President's Circle includes Convention registration for two members in the household and one copy of any new NCC publications.

## **The National Museum of Cambridge Glass**

Located at 136 S. 9th Street  
in downtown Cambridge  
Wed-Sat 9-4  
Sunday 12-4

