



Cambridge Crystal Ball

Published by the National Cambridge Collectors, Inc. as a resource which informs, invites and inspires people to encourage the continued preservation of the glass produced by the Cambridge Glass Company of Cambridge, Ohio for future generations.

Issue No. 527

ISSN 2474-5987

April 2019

Museum Etiquette with the Girl Scouts & Miss Ohio

By Cindy Arent

On the evening of March 20, a group of Girl Scouts from Buckeye Trail Elementary arrived for our Museum Etiquette Program. Before we began, the girls had a meet and greet with Miss Ohio, Matti-Lynn Chrisman. Museum volunteers presenting the program were: Lindy Thaxton, Sally Slattery, Sandi Rohrbough and Cindy Arent.

During the etiquette program, the girls learned how to properly introduce someone and tips on good conversation from Lindy Thaxton. Sally Slattery taught the group proper etiquette during an afternoon Low Tea, such as how to hold their cup and serve the tea. Cindy Arent demonstrated basic table etiquette and how to set an informal table. The Girl Scouts were invited to participate in several activities throughout the evening.

We received very good feedback on social media!

From Jodie Franklin, Girl Scout Troop Leader, "Thank you to all of the Cambridge Glass Museum volunteers! You are all awesome and we are grateful for the experience. I think we all learned a lot!"

From Miss Ohio, Matti-Lynn Chrisman, "I had a blast visiting the Cambridge Glass Museum with our area's Girl Scouts! We learned about table etiquette, toured the museum, and talked about Children's Hospitals Week. It was so cool to find

out that my hometown's glass company created the bottles used in Elvis Presley's plane, the glasses Fred and Ginger used in "Top Hat," AND the vase in the first episode of one of my all-time favorite shows: The Good Place. What a cool night!"

The Girl Scouts will be hosting a Tea for family and friends and wanted to learn about basic etiquette before their party. We hope they remember some of what they learned at the National Museum of Cambridge Glass!

see the photos on page 7

What's Inside

| | |
|---|----|
| Museum Etiquette with Girl Scouts & Miss Ohio . | 1 |
| President's Message | 3 |
| Museum Open for the 2019 Season | 4 |
| Museum Etiquette Photos | 7 |
| Convention 2019 Entertaining with Cambridge. . | 8 |
| Convention 2019 Schedule | 9 |
| Convention 2019 Registration | 11 |
| 2019 Board of Director Candidates | 13 |
| More Uncataloged Candlesticks & Candelabrum . | 16 |
| eBay Report | 18 |
| NCC Benefit Auction 2019 Results | 20 |
| New Members | 22 |

National Cambridge Collectors, Inc.

PO Box 416 Cambridge, OH 43725-0416

Board of Directors

| | | |
|------------------------|---------------|-------------------|
| | 2019 | |
| Rick Jones | Lindy Thaxton | Lynn Welker |
| | 2020 | |
| Cindy Arent | Larry Everett | Sharon Miller |
| | 2021 | |
| Sandra Bridwell-Walker | Ken Filippini | Freeman Moore |
| | 2022 | |
| Julie Buffenbarger | David Rankin | Frank Wollenhaupt |

Officers

| | |
|------------------|------------------------|
| President | Freeman Moore |
| Vice-President | Ken Filippini |
| Secretary | Lindy Thaxton |
| Treasurer | Sandra Bridwell-Walker |
| Sergeant-at-Arms | Larry Everett |

| | |
|--------------------------------|---------------|
| Director of Strategic Planning | Ken Filippini |
| Director of Human Resources | David Ray |
| Chair, Endowment Committee | David Rankin |

MEMBERSHIP QUESTIONS?

Please send address changes to:
Membership - NCC
PO Box 416
Cambridge, OH 43725-0416
or by e-mail to:
membership@cambridgeglass.org

Vice President

Member Relations
Convention
Event Social Media
Glass Dash
Glass Show
Study Groups
Webmaster

Member Services

Freeman Moore (acting)
Freeman Moore, Membership Database
(open)
Alex Citron
Larry Everett & Frank Wollenhaupt
Sandra Bridwell-Walker
Jeannie Moore, Study Group Coordinator
David Adams

Vice President

Campaigns

Events

Projects
Publicity

Development

Julie Buffenbarger
Ken & Jane Filippini, Annual Fund Directors
Larry Everett, Director of the Heritage Society
Bev & Will Acord,
Lynn Welker, Auction Managers
Carl Beynon, Jeweler & Scotties Project Manager
Jonathan Fuhrman

Education

Larry Everett
Freeman Moore, Executive Editor
Mark Nye, Director of Publications
Dave Rankin, Director of Media Productions
Mark Nye, Archivist

Vice President

Crystal Ball
Publications
Media Productions
Research

Museum

Cindy Arent
Lindy Thaxton, Director of Public Operations
Cindy Arent,
Joe Miller,
Lindy Thaxton
Lindy Thaxton, Director of Inventory Management
Lynn Welker, Director of Collections
Cindy Arent, Gift Shop Manager
Lynn Welker, Gift Shop Manager
Mark Nye, Director of Archives
Cindy Arent, Director
Cindy Arent

Vice President

Public Operations
Facilities & Grounds

Inventory Management
Collections
Museum Gift Shop

Archivist
Museum Social Media
Community Relations

Administration

Sandra Bridwell-Walker
Lisa Neilson, Office Manager
(vacant)

Vice President

Accounting & Finance
Information Technology



CONTACT US

Phone: 740 432-4245
nccglass@yahoo.com



Freeman Moore, President
e-mail: president@cambridgeglass.org
Lindy Thaxton, Secretary
e-mail: secretary@cambridgeglass.org

Heritage Society

Ensuring the preservation mission of the NCC through planned giving and estate bequests.

Members of The Heritage Society are those who have included the NCC in their wills or estate plans, thus providing the organization with a secure future.

The mission of The Heritage Society is to foster smart estate planning and to assure that NCC is not forgotten as an important beneficiary. Any pledge is meaningful and appreciated.

All Cambridge collectors - both current and future - will benefit from, and be grateful for your support.

Let us know how we can help with your future plans.

NCC Website: www.CambridgeGlass.org

Miami Valley Study Group Website: www.mvsg.org



PRESIDENT'S MESSAGE

Annual Fund and Election Time

April, the first full month of spring (for some of us anyway). Your board of directors met last weekend in Cambridge and then we had the membership meeting in the evening. As usual, we tried to keep the meeting short so everyone in attendance could preview the outstanding collection of glass that was ready for the auction the next morning. Many thanks for Bev & Will Acord and Lynn Welker auction co-managers as well as all of the help they utilized in photographing, organizing, and finally displaying the glass for the auction. Some pictures of auction activities will be in the May issue of the Crystal Ball.

April also means it is time for the Annual Fund mailing. In case you might have forgotten, NCC uses the Annual Fund as your opportunity to renew your commitment to NCC and our efforts in education and preservation. You, our Friends of Cambridge, contributed nearly \$50,000 in the Annual Fund drive in 2018. The last page of the Crystal Ball lists the various benefactor levels. Thank you for your support.

The Annual Fund mailing also includes the ballots for the board of directors election. This issue of the Crystal Ball is being sent to every household by us-mail, even if you only receive it electronically. I encourage you to read the biographies of the five candidates that are included in this issue of the Crystal Ball, and to promptly send in your Annual Fund contribution along with your ballots. Ken and Jane Filippini will be getting the materials organized and sent out by mid-April. It is quite a chore to prepare a mailing for nearly 500 households, so thanks to Ken and Jane for handling this task.

National Volunteer Week is April 7-13 this year, and is an opportunity to thank all the thousands of volunteers across the country who



NATIONAL VOLUNTEER WEEK 2019
April 7-13, 2019
Volunteers:
Passion, Action, Impact

keep many organizations running, communities safe and provide the services that otherwise would not exist without volunteers. Volunteers are the lifeblood of any nonprofit organization.

National Cambridge Collectors is no exception. We have some very dedicated volunteers yet we can always use more. Don't think that you have to live near Ohio to contribute. What are you good at? Do you have ideas (and skills) on using social media to connect with the younger generation? Some of our volunteers have helped in the same role for numerous years, and could use relief.

How are you willing to help?

It's time to look towards the last full weekend in June, 26-29. I know a lot of our members are not able to attend our annual convention due to health, work or distance reasons. It is quite a drive from California to Ohio (Thank you Michael for the eBay report). Some details for convention are still being worked. Another thank you to Sharon Miller for ensuring we'll have something to eat each evening. Sandra Bridwell-Walker has been busy contacting dealers to ensure we have an outstanding collection of dealers and glassware for you. You'll also notice that Frank Wollenhaupt has reminder about the Glass Dash in this issue.

I encourage you to consider attending, having fun, and renewing old friendships while making new friendships, and of course, looking for and finding some unique pieces of glass that appeal to you. If you can't attend, we'll keep you informed about what happens in the Crystal Ball.

I hope to see many of you in June at Convention. Once again, registration is in this issue and will be available online on our website. I hope you can join us. Let's share the positive message about being a Cambridge collector.

Thanks for listening.

Freeman Moore
president@cambridgeglass.org

National Museum of Cambridge Glass Open for the 2019 Season ~ Museum Volunteers at Work ~

By Cindy Arent

As you read this issue of the Crystal Ball, the museum will be open for the 2019 season with new displays, a restocked gift shop, a building that has been thoroughly cleaned from top to bottom, new blinds in the front windows and new chairs in the auditorium. This is due to the dedication of volunteers who have worked from the day we closed for the season until we opened and the generous support of our members and friends.

It has been fun posting photos of clean glass and volunteers at work on the museum Facebook page. Some of the most popular posts include a brief history of a piece of glass if it is available. I like to refer to the history as the biography of the piece. The most popular post was a photo of the Near Cut Daisy Lamp along with its biography. It is nice to see comments on the posts from members that we haven't seen in a while.



Another piece of Cambridge Glass with an interesting history! This beautiful lamp was given by Arthur J. Bennett (President of The Cambridge Glass Company) to A. Clark Armstrong in 1917 as a Christmas gift. Mr. Armstrong's occupation was listed in the 1916 Cambridge City Directory as a drayman. He did hauling for the glasshouse on a flat-bed wagon pulled by horses. The lamp was donated by the Armstrong family in memory of Mabel L. Armstrong Sharpies and has been the most popular post on the Museum Facebook page this year. There were even comments from descendants of the Armstrong family who remembered seeing the lamp in their grandmother's living room years ago.

We have received word that the Grant submitted to the Cambridge/Guernsey County Visitors & Convention Bureau has been approved. The grant is to be used for marketing and advertising and was awarded for the full amount submitted, \$5000. We thank the VCB for their continued support!

NCC members attended the Cambridge Area Chamber of Commerce Annual Dinner representing our organization. There were over 400 people in attendance at the Pritchard Laughlin Civic Center for the event. We enjoyed talking with several members from the community.



Representing NCC at the Annual Cambridge Chamber of Commerce Dinner were: Seated L-R Mike Arent, Jill Ross, Jeff Ross, Joe Miller and Sharon Miller. Standing are Lindy Thaxton and Cindy Arent.

At this writing, we have a Girl Scout troop scheduled at the museum for our etiquette program on March 20. Miss Ohio, Matti-Lynn Chrisman, will also talk to the group during the evening. More information will follow.

See you at the museum! ■



The new blinds on the front of the museum were installed by Modern Glass employees. As they were taking the old blinds down they disintegrated with pieces of plastic everywhere.



After the new blinds were installed, the inside of the windows had to be cleaned before the gift shop cases could be moved back in place. Joe and Sharon Miller know just how dirty the windows were!

After the blinds were installed, there was a lot of static cling. Elaine Thompson and Lisa Strebler are using dryer sheets to get rid of the static and bunching of the blinds.





The gift shop cases were cleaned and moved back into place. Mike and Lisa Strebler are shown restocking the gift shop.

In addition to the Cambridge Glass, there is a lot of other glass to clean. Cindy Arent (below) crawled on top of the mold display case to clean the windows in the Education Center and Jack Thompson (above) cleaned the top on the entry area.



Lindy Thaxton has spent many, many hours on the museum inventory this year and has done a wonderful job.

Museum Etiquette with the Girl Scouts & Miss Ohio

continued from page one



The girls learned how to pass food from the left to the right and that it isn't polite to take a roll from the basket when it is being passed to someone else.



Miss Ohio is surrounded by the Girl Scouts each holding their Cambridge tea cup correctly.



Miss Ohio, Matti-Lynn Chrisman, autographed photos for the girls during the evening.



Museum volunteers (L – R) Sandi Rohrbough, Lindy Thaxton and Cindy Arent pose for a photo with Miss Ohio and the Girl Scouts.

Entertaining with Cambridge!

by Freeman Moore

We are pleased to announce the start of registration for 2019 Convention – *Entertaining with Cambridge*. In this issue, you will find the tentative Convention schedule – more things are to be announced – as well as the registration form. Some details are tentative because of the lack of Convention Director but we're pitching in getting everything organized for you.

Our convention activities will provide ample opportunities for you to socialize with friends as well as educational programs to learn something new. Sandy Bridwell-Walker is coordinating the show activities, so there will be ample dealers offering glass from all companies to tempt your checkout. Another opportunity to make that special purchase is at the Glass Dash held Saturday morning.

It wouldn't be convention without a fund raiser. Julie Buffenbarger is working on this activity, and will announce it next month.

What can you do if you arrive early in Cambridge? Of course, you could always go shopping either in Cambridge or the area. I was told the Baker Family Museum in Caldwell Ohio will be closed until June 1st, but it should be open for you to visit in June. Of course, you'll want to make time to see the National Museum of Cambridge Glass and see all the improvement that you have read about in the Crystal Ball.

My thanks to Sharon Miller for coordinating our meal events. She worked with Theo's to create this year's dinner menus. We were able to hold the line pretty well on costs. The costs you see on the registration form for food and registration is the same as 2018.

To get things started, Thursday night will be a pasta bar buffet. It will include spinach & cheese lasagna, meat & Cheese lasagna, parmesan encrusted chicken, three styles of pasta and four types of sauces, along with breadsticks and salad. If you're still hungry, you can finish the meal with a brownie sundae. No calorie counting allowed. You won't go hungry.

Friday night will be our Annual Banquet featuring Beef Tenderloin and Five-Cheese & Bacon Stuffed Chicken. And yes, there will be veggie appetizers to snack on at the beginning so you won't feel guilty about having the cheesecake for desert. It will be followed by our Annual Meeting, Awards and Bring & Brag. Be sure to bring the

special items you found this year. There will also be glass ID. It has been customary to bring your special stem to the Friday night banquet.

Saturday Night we will wrap it up with a taco and fajita bar. You'll have your choice of soft or hard beef tacos or chicken fajitas, along with the customary Tex-Mex sides of rice and beans. Of course, there will be the customary toppings for your tacos. You waited all week, and tonight will feature a wide variety of Theo's famous pies.

Our first educational program will be "Cambridge Optics." *Entertaining with Cambridge* has numerous possibilities. We're still working on one more presentation.

Jeannie Moore has agreed to coordinate volunteers for the Thursday night centerpieces. Here is a chance to illustrate how to decorate with Cambridge. Some people have expressed reluctance about doing a centerpiece because they travel a distance and flowers will die. Check out the assortment of plastic flowers at your local dollar store.

If anyone needs a special meal, please let us know. We will make it work for you.

Once again we will have online Convention registration. Look for the link on the NCC website.

For displays at Pritchard Laughlin, suggestions are being solicited. Are you willing to put on a display, or maybe partner with someone? If not this year, think about it for next year. We need to involve additional people as a way of spreading the work load around and not rely on the "usual volunteers." It's your convention – make suggestions and help out at whatever level you are comfortable with.

One other piece of good news, so far, the conference hotels of Comfort Inn and Sleep Inn are continuing their rates for this year. That's \$79 for a king bed room (2 queen rooms will be on an as available basis, so book early!). These rates are good for NCC members any time of the year. We have a link to book a reservation on our website at www.cambridgeglass.org.

Mark your calendars and we will see you in June! Please register early if you can!



Entertaining with Cambridge

2019 NCC CONVENTION

PRESENTLY SCHEDULED

(Programs subject to change in time and topic)

WEDNESDAY, JUNE 26

5:00 pm **WELCOME RECEPTION**, details next month

THURSDAY, JUNE 27

9:00 am Registration Opens National Museum of Cambridge Glass
5:00 pm Cocktail Reception/**Meet our Glass Dealers** Pritchard Laughlin Galleria
6:00 pm Opening Dinner Buffet, **Endowment Fund-Raiser** Pritchard Laughlin Galleria
7:30 pm **Keynote: "Cambridge Optics"** Pritchard Laughlin Conf Room

FRIDAY, JUNE 28

8:00 am Advance Numbers for Show Admission Pritchard Laughlin Galleria
8:00 am Registration Opens Pritchard Laughlin Galleria
9:00 am First Timers and Mentors Program National Museum of Cambridge Glass
Coffee with Cambridge- meet our 1st Timers!
12:45 pm **Those with advance numbers may line up** Pritchard Laughlin Galleria
1:00 pm Glass Show Opens Pritchard Laughlin Exhibit Hall
5:00 pm Glass Show Closes
5:00 pm Cocktail Reception/President's Circle Salute Pritchard Laughlin Galleria
6:00 pm **Banquet Dinner & Annual Meeting** Pritchard Laughlin Galleria
Awards Presentation
7:45 pm **Bring & Brag and Glass ID** Pritchard Laughlin Conference Room

SATURDAY, JUNE 29

7:00 am Glass Dash – Early Bird Admission St. Benedict's Gymnasium
8:30 am Glass Dash – Regular Admission St. Benedict's Gymnasium
10:30 am Glass Show and Sale Pritchard Laughlin Exhibit Hall
12:15 pm **Display Case Review** Pritchard Laughlin Galleria
2:00 pm Pritchard Laughlin Exhibit Hall
5:30 pm Closing Cocktail Celebration Pritchard Laughlin Galleria
6:00 pm **Closing Dinner: Taco/Fajita Buffet** Pritchard Laughlin Galleria
7:30 pm **Closing Program: tbd** Pritchard Laughlin Galleria

*CONVENTION PACKET PICK-UP: Wed: 3:00 – 4:00 Museum;
Thurs: 9:00 – Noon Museum; 4:30 – 6:00 PLCC; Fri: 8:00 – Noon PLCC;*



Entertaining with Cambridge

2019 NCC CONVENTION – 46th ANNUAL

June 26th through June 29th, 2019

Registration

We hope to see you all this June for another fun Convention. The theme this year is **Decorating with Cambridge**, which offers numerous ideas. How can you decorate the living room, dining room, kitchen, and other rooms in colorful and creating styles? **Once again, you can register online AND WE ENCOURAGE YOU TO DO SO. Registration is due by June 1, 2019.** If you prefer the traditional way, you can send your check payable to NCC, Inc. along with the completed registration form to:

**National Cambridge Collectors, Inc.
Convention Registration
P. O. Box 416
Cambridge, Ohio 43725-0416**

Each person registering for the convention pays the \$26.00 registration fee which helps cover the cost of facility rental. Your registration fee includes admission to the NCC Glass Show and Sale and all other scheduled events. Please register for all events you plan to attend, including those offered at no charge. For children under ten years of age, there is no registration fee; however, they must pay for any meals they attend.

Show dealers and President Circle members – there will be no registration fee.

Please list each person registering separately. Names should be given as you wish them to appear on your name badge. Please provide your membership number and your email address on the registration form. If registering for more than three persons, list additional members on a separate sheet or the space provided below.

All registrants will receive an email confirmation of their registration. And PLEASE, register electronically as it helps your Convention organizers IMMENSELY!

After April 7, look for:

"Convention Registration" on the NCC website <http://www.CambridgeGlass.org>

Cancellation Policy

Written Cancellation up to 30 days before first convention event – full refund.

Written Cancellation up to 15 day before first convention event – full refund less \$10 handling fee.

Written Cancellation up to 5 days before first convention event – refund meals only.

Written Cancellation less than 5 days before first convention event – no refund.

Entertaining with Cambridge

2019 NCC CONVENTION – 46th ANNUAL

June 26th through June 29th, 2019

Registration Form

| <i>Name of Conventioneers</i> (As you wish it to appear on your Name Badge) | <i>Membership Number</i> | <i>First Convention</i> | |
|--|------------------------------|-------------------------|----|
| _____ | _____ | Yes | No |
| _____ | _____ | Yes | No |
| _____ | _____ | Yes | No |

Address: _____

Email address _____ Phone Number (_____) _____
(Registration confirmation will be sent via email when the above information is provided)

| <i>ACTIVITY</i> | <i>FEE</i> | <i>NUMBER ATTENDING</i> | <i>TOTAL</i> |
|---|------------|-----------------------------|--------------|
| <i>Registration (postmarked by June 1 please)</i> | \$26.00 | _____ | _____ |
| <i>Dealer or President's Circle</i> | N/A | _____ | _____ |
| <i>Thursday Opening Dinner*</i> <i>Pritchard Laughlin Galleria</i> <i>Pasta Bar Buffet: Spinach & Cheese Lasagna, Meat & Cheese Lasagna, Parmesan Encrusted Chicken, Three Kinds of Pasta, Four Sauces, Sautéed Veggies, Family Style Salad, Breadsticks, Ice Cream Sundae, Beverages</i> | \$18.00 | _____ | _____ |
| <i>Friday Banquet Dinner, Annual Meeting and Awards*</i> <i>Pritchard Laughlin Galleria</i> <i>5-Cheese and Bacon Stuffed Chicken Breast, Carved Beef Tenderloin, Parsley Red Potato, Caribbean Blend veggies, Family-Style Salad, White Chocolate/Raspberry Cheesecake, Chocolate Lasagna, Bread & Beverages</i> | \$33.00 | _____ | _____ |
| <i>Saturday Dinner*</i> <i>Pritchard Laughlin Galleria</i> <i>Taco/Fajita Buffet: Taco Meat, Fajita Chicken, Grilled Peppers & Onions, Rice, Beans, Nacho Chips, Melted Cheese, Salsa, Soft and Hard Taco Shells, Condiments, Variety of Pies, Beverages</i> | \$18.00 | _____ | _____ |
| <i>First Time Orientation and Coffee with Cambridge</i> | N/A | _____ | _____ |

* Meals include iced tea, coffee, taxes and gratuity. Cocktails are available for an additional charge. Please contact us at Convention@cambridgeglass.org if special meals are required due to dietary restrictions.

Any additional comments, information, special needs (e.g. gluten free, non-meat), or registrants?

Entertaining with Cambridge

Volunteers Needed For Banquet Center Pieces

by Jeannie Moore

It is Cambridge Convention time and I have been asked to seek out volunteers for center pieces for Thursday evening tables. Please put your talented thoughts together and think about what you would like for your table.

At this time, I don't know how many we will need. Center pieces can be a team effort, let your imagination guide you.

Please email me if you're willing to volunteer for a table. Jeannie_Moore@verizon.net

You are serving six deviled eggs.
What can you use other than a
deviled egg plate that holds twelve?

Of course, you serve lobster on a
lobster plate. Right?

How much would you put in a wine
glass from the 1930s? What do you
use today?

Have you found any Cambridge napkin
rings for your table lately?

What is a good substitute for a
toothpick holder?

What is the slot used for in a
Seashell #32 - 2 $\frac{3}{4}$ " 3-toed ash tray?



Friday Night Goblets

Don't forget to plan ahead and bring
your favorite (or special) goblet
for use Friday night.



Displays During Convention

There are three display cases at the Prichard Laughlin Civic Center which can be used during convention. What would you like to see? Are you willing to do a display (or perhaps team with someone else)?

One of the reasons people come to convention is to see items they don't normally see. Here is your chance to share with others. If you are interested, send an email to convention@cambridgeglass.org

2019 Candidates for NCC Board of Directors

(Alphabetical order)

2019 Board of Directors Election

We are proud to present this slate of five (5) candidates for this year's election. Listed in alphabetical order, they are:

- Nancy Misel
- Lyle Stemen
- Lindy Thaxton
- Gerald Vaccarella
- Lynn Welker

Each candidate was invited to submit a picture and biography about their selves. Please take the time to read through their material.

You will receive your ballots as part of the Annual Fund Mailing which will be done in early April. Because this information is crucial to the future of NCC, all households are receiving a printed copy of this issue of the Crystal Ball, even if you normally only receive the electronic version. Make sure to return your ballot prior to June 22 so it can be counted before the Annual Meeting.

Thank you to all of the candidates for offering to run for the board of directors. Volunteers make NCC a great organization.

Ken Filippini, Rick Jones, David Ray
2019 Nominating Committee



Nancy Misel

Although I was not born in Ohio, and never lived in Cambridge, both sides of my family were in, or near, Cambridge before the War of 1812. I spent part of every childhood summer in Cambridge visiting all the relatives and their Cambridge glass. I even earned a small allowance dusting some of it!

Upon graduation from Ohio State, I served as an Air Force pharmacist for 38 years. During my career I had several unique and challenging positions. During the 1992-1993 base closures, Medicare did not yet provide a pharmacy benefit. I was tasked to develop a mail order program to provide pharmacy support to retirees at the closed AF bases until Medicare instituted Part D. That experience led to the opportunity to work on the development of the pharmacy benefit for the first TRICARE (military medical insurance) contract and on the development of the centralized DoD pharmacy formulary. My final position was as Director of the Air Force's \$35 million specialty drug program supporting beneficiaries at 75 AF bases worldwide.

Despite growing up around Cambridge glass, I had to be sent to California to actually purchase my very first piece. It was a Portia ice bucket at a show in San Bernardino, CA. Lacking that purchase, and the AF bringing me back to Ohio a number of years later, I might never have become involved in NCC. My glass story is familiar - I began with Portia and some Nearcut which, over time, morphed into almost anything Cambridge manufactured.

Since returning to Ohio, I have enjoyed attending quarterly meetings and conventions. I've done a display for the latter, have assisted with auction setup and photography, and helped prep educational programs. I have also had the opportunity to participate in the Miami Valley Study group. As a serious history lover, I've enjoyed working on several research projects furthering web based documentation of the Cambridge Glass Company. I truly believe that the greater the scope of centralized online information, the greater the opportunity for people of all ages to discover NCC and fall in love with Cambridge glass.



Lyle Stemen

Lyle has collected “figural” stemware for over twenty years. The collection includes some French glass, some Heisey, the Libbey “silhouette” animals and the like. At an antique show in Auburn, Indiana, a chance encounter with a “statuesque” cocktail in Gold Krystol & Crown Tuscan put him on a search. The only descriptive term the vendor could offer was the phrase “Crown Tuscan”. It was unknown if that term referred to the little lady forming the stem or one of the colors in the cocktail. The search finally led to Cambridge and the NCC.

The resulting trip to Cambridge created a meeting with some of the warmest and most friendly people to be found anywhere. It also resulted in Lyle and his wife Linda becoming hard working members of NCC for well over a decade now. In that time, Lyle has spent many hours on the Miami Valley Study Group project to clean and improve catalog images included on their website. He has even been on his hands and knees laying flooring in the “yellow house”. It is his firm opinion that the efforts of the NCC deserve all of our support to ensure their continuation and growth.

In the thirty five years prior to his retirement, Lyle traveled for Hewlett Packard as a field troubleshooter, problem solver and customer advocate, often dealing with the customer during high stress situations. He learned how to defuse tensions and steer discussions toward meaningful resolutions. He believes that those skills could be of some value to the board, and is asking for the opportunity to use them for the benefit of the National Cambridge Collectors.



Melinda (Lindy) Thaxton

Lindy Thaxton is eager to seek reelection for a second term on the Board of Directors. She feels the most important current initiatives for the NCC are the maintenance and improvement of the Museum, and the building of a meaningful Endowment to support the Museum in the long run.

During her first term on the Board of Directors, Lindy was Secretary for two years. She assumed additional responsibilities supporting the Museum, including Inventory Management (working with Lynn Welker updating the inventory records), Public Operations (supporting the Docent staff and creating a Docent Handbook), and Facilities & Grounds (maintaining and improving the Museum property).

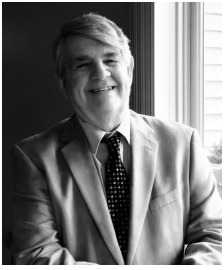
Lindy holds a Bachelor of Arts in Accounting degree and has worked as an Accounting Manager at Verizon/GTE for 32 years. This work experience developed her management and special project skills which can continue to be utilized for the good of the NCC.

In 2011, Lindy retired from Verizon and moved back to Cambridge from Ft. Wayne IN. Since then she has become active in the local community. Dickens Victorian Village is a holiday event that bring tourists and bus tours to Cambridge and is a valued partner with the Museum. Lindy is the Dickens Vice President and has been that organization’s volunteer accountant for 6 years. She also enjoys helping create the scenes that line downtown Cambridge.

Retirement has provided the opportunity to commit significant time to the NCC. Being at the museum at some time nearly every day of the week, Lindy has the opportunity to represent the NCC to the public, most of whom have never heard of Cambridge Glass.

Lindy’s basement has even been turned in to a Christmas workshop, making Christmas ornaments from broken Cambridge Glass to sell at the Museum Gift Shop, generating about \$3,000 per year in sales.

Lindy attended her first convention 1987. She joined NCC because Cambridge Glass is in her blood. Born and raised in Cambridge, most of her family worked at The Cambridge Glass Company. “It is extremely important to preserve the historic significance of Cambridge Glass and promote the importance of club membership both locally and nationally.”



Gerald Vaccarella

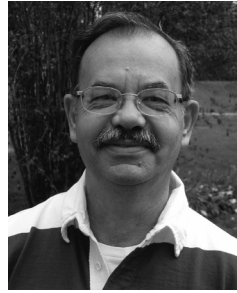
I spent a long, pleasant career teaching elementary students in the Rochester NY school district. I also enjoyed administrative assignments for the Rochester district as vice-principal and principal. I've worn many "hats" through the years including adjunct professor at

St. John Fisher College and teaching English to the foreign born in RCSD adult night school. I've worn a business hat as the owner of several Subway restaurant franchises, real estate investments and a mail order glass business. I've served as a volunteer in many organizations but the one closest to me is the Boy Scouts of America. I was an active Boy Scout, troop leader, counselor and neighborhood commissioner during and after receiving the Eagle Scout honor.

It was always a pleasure visiting Cambridge, Ohio through the years. I remember one year, in particular, going to two museums and visiting Judy Bennett's home (I thought it was, unofficially, the third museum in Cambridge!). Much has changed and developed in collecting since the seventies and eighties with the advent of the electronic age. NCC has developed spectacularly with the times. The National Cambridge Collectors organization has a high standard of preservation that would rival any museum. As years have passed, I continue to enjoy the enduring fascination of Cambridge glass. Over the last forty years I've given several lectures on Cambridge glass. I've written numerous articles for the Crystal Ball and other publications on various topics from early twentieth century history to numismatics to literature.

I served the collecting community in many ways by writing historical articles on antiques and collectibles. I've helped the local Rochester NY Depression Glass Club by lecturing and encouraging people to engage in the collecting community. I've lectured on other antiques and collectibles. I am a member of the American Numismatic Association and past president of the Rochester Numismatic Association. In May of 2017, I was presented with my own portrait medal by the R.N.A.. I am a member of the Western NY Postcard Club. My collections are numerous and my collecting career got started as a boy with baseball cards and coins. My personal Cambridge collection ranges from demitasse sets and swans to patterns like wildflower and statuesque.

I have belonged to many organizations over the years and in my profession. I must say the NCC has a friendly, fine group of people throughout the organization. If I were to draw a picture of an ideal group, National Cambridge Collectors would be at the top. My background in business, education and antiques would help in National Cambridge Collectors quest to preserve, protect and move forward with the Cambridge glass legacy. It would be a privilege to serve on the board of directors of this great organization.



Lynn Welker

Lynn can't remember when he was not interested in collecting Cambridge glass or supporting the Club and the Museum. Active at the Museum and on the Board, Lynn is concerned about keeping costs down

and maximizing all the Club's assets. He is Chairman of the Acquisitions Committee in charge of doing all the paperwork on donations to the Museum. He also works on Museum displays. Everyone knows he has moved every piece of glass in the Museum at least once. He also co-chairs the Auction with the Acords.

A graduate of Muskingum College in business, history, and music, he has been a fraternity advisor for thirty years at Muskingum. He also enjoys an occasional round of golf, but would rather be at an auction or antique show.

As to Cambridge glass, Lynn and his family love it all. His special interests are cordials, nudes, and gold and silver decorations on colored Cambridge. He also collects children's glass, furniture and American art pottery. The Welker family has completed four publications on Cambridge glass. Lynn has also been involved in helping Mark Nye work on publications for the Club.

His goals for the Club are to constantly improve the Museum and increase membership. His favorite part is finding more unusual pieces for the Museum displays. His goal for the year is to start writing for the Crystal Ball, again. He welcomes any ideas for the Museum or auction!

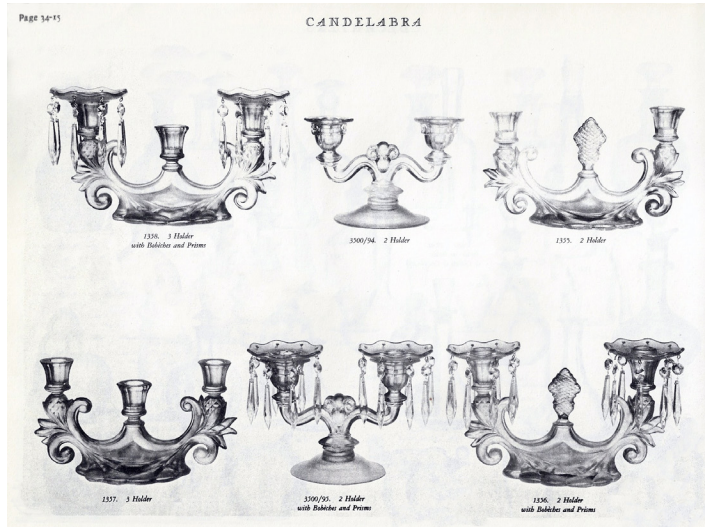
More Uncatalogued Candlesticks and Candelabra

By Jack Thompson

When you read David Ray's most recent article on the Caprice candlesticks, he talks about Cambridge making mold changes without any record of doing so. That theme is continued here but in a little different way.

Cambridge made so many beautiful candlesticks and candelabra. I have four of them that appear to be earlier versions of some very popular items. I have found no images of these yet in any catalog or price guide. No examples are yet known in anything but crystal.

The #1355, #1356, #1357 and #1358 were very popular candlesticks and candelabras. They all first appear on page 15 of the '34 catalog supplement. They also were later included in the Caprice line as accessory items, and many collectors do refer to them as Caprice candlesticks.



Page 228 (34-15), 1930-1934 Catalog Reprint

If mine were earlier versions of these items which first appeared in the 1934 supplement, why didn't these original versions appear earlier in the catalog? Could they have been such short-lived items that they didn't have a chance to, or could they have possibly been trial items or both? The predominant feeling is that these earlier versions were never actually put into full scale production. The company was probably working with these to see how they came out of the mold, etc. After the trial period, they reworked the molds to correct for the problems encountered and settled on the versions introduced in 1934 and commonly seen today.

Finial Changes



Original Center
Finial



Center Finial
Redesigned

There are two main changes that occur, with other minor ones that won't be mentioned here. The most noticeable change is the center finial. A plausible explanation for the change is that they had trouble with the original version coming out of the mold. The second feature that changed is the candle cup. The original design is much more detailed and, in my opinion, more beautiful. I wonder why they didn't keep it.

There are many other variations of these that could be out there, such as an early version of the #1357 and/or #1457 (3-Lite Candlestick, no bobeche), or the #1458 (3-Lite Candelabrum, 3 bobeche). I also could find no later version that had a center bobeche and outside candle cups. If anyone has seen any more of these in different variations, please let me know. ■

Candle Cup Changes



Original



Revised



1355 2-light candlestick, early version



1356 2-light candelabrum, early version



1358 3-light candelabrum, early version



1356 2-light candelabrum, revised version



1358 3-light candelabrum, revised version



Unknown early version, 3-light candelabrum

Welcome to the eBay Report. This column features Cambridge glass items that sold on eBay circa mid-February to mid-March, 2019. Selling prices have been rounded to the nearest dollar. If no color is mentioned, assume that the piece or part of it being discussed is crystal. Reader comments about prior reports have been edited for clarity. Here we go:

Rose Point

A #3400/96 oil & vinegar set on the Caprice line center handled tray sold for the opening bid of \$150.

A pressed Rose Point goblet etched Rose Point on the bowl brought \$153.



A set of NINE pressed Rose Point goblets with Royal Blue bowls sold for \$219, for a per-stem price of about \$24. A set of TEN pressed Rose Point cocktails with Royal Blue bowls brought \$350 (per stem price, \$35.) If pressed-stem Rose Point is your thing, get browsing, because there is a lot of it on eBay right now, and in various colors.



A #3400/38 80 ounce ball jug with gold encrusted etching brought \$350.



A pair of #1268 keyhole double candleabra with matching etched bobeches, all gold encrusted, sold for \$505.

A #3400/102 5 inch globe vase in Carmen with gold encrusted Rose Point etching is this report's highticket item, selling for \$3,201. Seller's typo turned "globe" into "glove," but perhaps that was apropos – the bidders clearly took off their gloves in the battle to win this spectacular gem of Cambridge glass.



Caprice

A La Rosa pink salt & pepper set on a center-handled tray shook out for \$160.



A #187 35 ounce decanter in Mocha (crystal handle and stopper) set in a Farber Brothers chrome holder, plus 4 matching #18 2 ounce tumblers, brought a nice even hunnerdbux.

The same seller offered an identical set, but in Royal Blue, which brought \$181. This set used to bring around \$500.



A 4-piece "bridge set" in Moonlight Blue, consisting of small dishes in a heart, spade, diamond, and club shape, were dealt a new home for \$210.

A set of 4 parfaits with La Rosa pink bowls sold for an impressive \$800.

A #187 35 ounce decanter in La Rosa pink (pink handle with crystal stopper) plus six matching #18 2 ounce tumblers brought an even more impressive \$1,000.



Statuesque (Nude Stem) Line

A cupped comport etched Diane sold for a too-low Buy It Now price of \$95. A claret with rare Topaz (not Gold Krystal) bowl was offered for a \$295 opening bid, but the auction was "ended by the seller because the item is no longer available." Hmm.



A bud vase in solid Crystal sold for \$245.

Etched Tableware and Stemware

A #3500/41 Gadroon 10-1/2 inch covered urn etched Elaine brought \$173.



A #103 2-piece night set etched Wildflower quenched the buyer's midnight thirst for the opening bid of \$195.

One seller offered not one but TWO #1372 16 inch tall 28 ounce decanters with cut stoppers, etched Diane, in separate auctions. One brought \$311, while the second one brought \$332. When, when, WHEN do you see these??



Gold, Silver, and Enamel Decorations

An Ebony #3400/862 center handled 4 compartment relish tray with silver encrusted Gloria etching sold for \$50. Some wear to the silver on the handle and edges was noted.



A #3400 ball decanter & stopper with etched and gold encrusted decoration reading, "State Highway Patrol – Ohio, Camp Perry 1933-1949" and sporting an original label sold for \$310. No measurements, capacity, or line number was noted, so I can't tell you what size it was. Can any of our readers tell us what Camp Perry is, and where it is or was?



on a windowsill, but don't leave it there in the long term.

A #3400/115 64 ounce ball jug in solid Crown Tuscan rolled away for \$228.



A #3400/78 cocktail shaker in Royal Blue with crystal stopper and applied handle, with a silver deposit decoration, brought an impressive \$836.

A #1232 10-3/4 inch tall vase in Royal Blue with heavy all over Rockwell silver overlay featuring grapes and vines, with an oval central "cameo" of two swans on a lake, swam away for \$935.

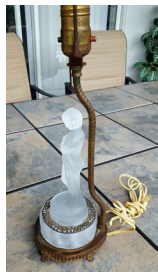


Miscellaneous



Sometimes REALLY attractive pieces go for a song. So it was with the #3450 Nautilus 84 ounce jug with Forest Green body and crystal handle, which someone won for a measly \$51. Before you say, "Oh, that old thing?", really LOOK at this piece. It. Is. *Gorgeous*.

One seller has been offering a set of six miniature faux-barrel shaped whiskeys (that go with the #1 Keg set) in 1920s Cobalt Blue #2 for months on end, with no takers. The \$85 price was discounted to \$60, and they finally sold. The collector hesitation surprised me, but I guess it made a *certain* sense, as the barrel portion of the keg set is so seldom seen in this color.



An 8-1/2 inch Draped Lady flower arranger in satinized crystal, mounted as a lamp, brought \$65. The gold-toned metal base was somewhat beat up, but it had an interesting lacy ring that rested on the shoulder of the base, presumably to cover up the holes where the flowers would be inserted, had it been used as intended. I'm surprised Cambridge didn't make a solid-base variation for mounting companies.

A #1313 6" keyhole stem footed ashtray with Royal Blue top brought \$108. The same seller also offered one with a Heatherbloom top, which brought \$181.



A #1234 11-1/2 inch keyhole stem vase with PeachBlo top, etched Apple Blossom, sold for \$180. Did I detect a slight purpling in the crystal foot and stem? Let this be a lesson to you: glass looks lovely

Reader Questions and Follow Ups from Previous Reports

A reader emailed to ask what I mean when I say that an auction was an "incognito" listing. What a great question! It reminded me that in the past I have asserted that, when writing or speaking to an audience, never assume that your readers or audience will simply understand every term you use. Apparently I needed a reminder about my own rule. Here's the explanation: When I say that an eBay auction I'm reporting on was an "incognito listing," I mean that the item being offered was Cambridge, but the seller of the item didn't *know* that. In most cases, sellers will give their items a very general title, such as, "Etched Pink Depression glass Vase with Flowers," and will list it in a catch-all category, such as an "unknown maker" glass category, or the category that fits the form of the piece, such as "Vases," "Barware," "Lamps", etc. What is interesting is to see whether very many Cambridge hounds sniffed out the incognito listing, and if it sold quickly at a Buy It Now price or for the opening (or a low) bid. I include these type of listings if the item is good enough to be of interest -- and to remind our members to search for Cambridge glass in eBay categories *other* than the ones specifically for Cambridge glass.

Another member shared an auction for a rare variation of the #1338 candlesticks that I missed.

"This is a rare pair of Moonlight #1338s in Version 1 (crosshatching Mt. Vernon effect on the balls.) I missed it also, not looking at them that closely until after they sold. I would have bought them in a heartbeat, even though I've owned a pair for many years. Very few of these known. The vast majority are version 2s and 3s, with a few version 4s thrown in now and then. What's been very interesting about this subject is the time line of Version 2 versus Version 3. It's possible that what was thought to be correct about this in an article published in 2014 is not correct. Either the order in which Version 2 and Version 3 were made should be switched, or they could have been made simultaneously."



Thank you! I always appreciate the contributions of our readers who are advanced collectors. They, and my editor, make this column better and more educational for all.

That's all for now. If you see any interesting Cambridge glass on eBay that you think I should be watching or reporting on, or if you have any other input, feel free to contact me at L.A.Glass@pacbell.net. Until next month, happy Cambridge hunting!

2019 March Benefit Auction Results

refer to the January 2019 Crystal Ball for descriptions

| | | | | | | | |
|-----------------|-----------------|----------------|----------------|-----------------|-----------------|----------------|-----------------|
| 1..... \$35.00 | 56..... \$75.00 | 112... \$20.00 | 168... \$35.00 | 223... \$35.00 | 279. \$100.00 | 334... \$25.00 | 390... \$45.00 |
| 2..... \$30.00 | 57..... \$45.00 | 113... \$10.00 | 169... \$40.00 | 224... \$30.00 | 280... \$45.00 | 335. \$250.00 | 391... \$10.00 |
| 3..... \$55.00 | 58..... \$40.00 | 114... \$35.00 | 170... \$45.00 | 225... \$50.00 | 281. \$120.00 | 336... \$75.00 | 392... \$25.00 |
| 4..... \$30.00 | 59..... \$20.00 | 115... \$20.00 | 171... \$50.00 | 226. \$300.00 | 282. \$105.00 | 337... \$50.00 | 393... \$75.00 |
| 5..... \$25.00 | 60..... \$80.00 | 116... \$20.00 | 172... \$40.00 | 227... \$20.00 | 283... \$55.00 | 338... \$25.00 | 394... \$10.00 |
| 6..... \$105.00 | 61..... \$45.00 | 117. \$175.00 | 173. \$175.00 | 228... \$45.00 | 284. \$200.00 | 339... \$55.00 | 395... \$25.00 |
| 7..... \$100.00 | 62..... \$35.00 | 118... \$55.00 | 174... \$85.00 | 229... \$10.00 | 285... \$85.00 | 340... \$60.00 | 396... \$25.00 |
| 8..... \$45.00 | 63..... \$60.00 | 119... \$50.00 | 175. \$400.00 | 230... \$40.00 | 286... \$20.00 | 341... \$15.00 | 397... \$40.00 |
| 9..... \$25.00 | 64..... \$25.00 | 120. \$350.00 | 176... \$45.00 | 231... \$50.00 | 287... \$10.00 | 342. \$225.00 | 398... \$70.00 |
| 9..... \$25.00 | 65..... \$35.00 | 121. \$100.00 | 177... \$10.00 | 232... \$85.00 | 288. \$150.00 | 343... \$45.00 | 399... \$45.00 |
| 10..... \$25.00 | 66..... \$25.00 | 122. \$125.00 | 178... \$10.00 | 233... \$60.00 | 289... \$27.50 | 344... \$20.00 | 400... \$40.00 |
| 11..... \$40.00 | 67..... \$20.00 | 123. \$250.00 | 179. \$105.00 | 234... \$30.00 | 290... \$55.00 | 345. \$130.00 | 401... \$20.00 |
| 12..... \$40.00 | 68..... \$80.00 | 124... \$45.00 | 180. \$175.00 | 235... \$55.00 | 291... \$75.00 | 346. \$600.00 | 402... \$60.00 |
| 13..... \$15.00 | 69..... \$15.00 | 125. \$500.00 | 181. \$300.00 | 236... \$50.00 | 292. \$175.00 | 347... \$95.00 | 403... \$60.00 |
| 14..... \$85.00 | 70..... \$30.00 | 126... \$40.00 | 182. \$135.00 | 237... \$35.00 | 293... \$65.00 | 348. \$300.00 | 404. \$145.00 |
| 15..... \$60.00 | 71..... \$70.00 | 127... \$10.00 | 183. \$215.00 | 238... \$80.00 | 294. \$150.00 | 349... \$55.00 | 405... \$20.00 |
| 16... \$105.00 | 72..... \$80.00 | 128... \$45.00 | 184. \$300.00 | 239... \$20.00 | 295. \$300.00 | 350. \$345.00 | 406... \$50.00 |
| 17... \$100.00 | 73..... \$30.00 | 129... \$45.00 | 185... \$80.00 | 240... \$70.00 | 296... \$50.00 | 351... \$90.00 | 407... \$20.00 |
| 18..... \$80.00 | 74... \$250.00 | 130... \$20.00 | 186. \$160.00 | 241. \$200.00 | 297. \$125.00 | 352... \$40.00 | 408... \$50.00 |
| 19..... \$50.00 | 75..... \$70.00 | 131... \$60.00 | 187... \$50.00 | 242. \$100.00 | 298... \$65.00 | 353... \$40.00 | 409.... \$5.00 |
| 20..... \$55.00 | 76..... \$30.00 | 132. \$300.00 | 188... \$25.00 | 243... \$50.00 | 299... \$50.00 | 354... \$75.00 | 410.... \$5.00 |
| 21..... \$70.00 | 77... \$275.00 | 133... \$25.00 | 189... \$25.00 | 244... \$25.00 | 300... \$95.00 | 355... \$50.00 | 411..... \$2.00 |
| 22..... \$60.00 | 78... \$110.00 | 134... \$55.00 | 190... \$90.00 | 245..... \$5.00 | 301..... | 356... \$30.00 | 412... \$10.00 |
| 23..... \$60.00 | 79..... \$30.00 | 135. \$500.00 | 191. \$175.00 | 246... \$45.00 | ... \$2,300.00 | 357. \$250.00 | 413..... \$7.50 |
| 24..... \$80.00 | 80... \$375.00 | 136... \$30.00 | 192. \$145.00 | 247... \$85.00 | 302... \$75.00 | 358... \$25.00 | 414..... \$5.00 |
| 25..... \$30.00 | 81..... \$30.00 | 137... \$10.00 | 193... \$70.00 | 248... \$60.00 | 303. \$150.00 | 359... \$40.00 | 415... \$10.00 |
| 26..... \$45.00 | 82..... \$50.00 | 138... \$25.00 | 194... \$50.00 | 249... \$30.00 | 304. \$230.00 | 360. \$450.00 | 416... \$10.00 |
| 27..... \$40.00 | 83..... \$10.00 | 139. \$190.00 | 195... \$40.00 | 250... \$25.00 | 305. \$500.00 | 361... \$90.00 | 417... \$50.00 |
| 28..... \$40.00 | 84..... \$70.00 | 140. \$325.00 | 196... \$25.00 | 251... \$60.00 | 306. \$250.00 | 362... \$50.00 | 418... \$10.00 |
| 29... \$825.00 | 85..... \$45.00 | 141... \$70.00 | 197... \$20.00 | 252... \$60.00 | 307... \$25.00 | 363... \$45.00 | 419... \$15.00 |
| 30... \$150.00 | 86..... \$55.00 | 142... \$25.00 | 198. \$135.00 | 253... \$35.00 | 308... \$15.00 | 364... \$25.00 | 420... \$40.00 |
| 31..... \$20.00 | 87..... \$40.00 | 143. \$600.00 | 199... \$55.00 | 254... \$35.00 | 309... \$70.00 | 365... \$40.00 | |
| 32..... \$20.00 | 88..... \$20.00 | 144. \$185.00 | 200... \$20.00 | 255. \$100.00 | 310... \$45.00 | 366... \$65.00 | |
| 33..... \$35.00 | 89..... \$35.00 | 145. \$200.00 | 201..... | 256... \$30.00 | 311... \$75.00 | 367... \$70.00 | |
| 34..... \$65.00 | 90... \$275.00 | 146... \$12.50 | ... \$1,025.00 | 257... \$20.00 | 312... \$55.00 | 368... \$25.00 | |
| 35..... \$25.00 | 91..... \$50.00 | 147... \$20.00 | 202. \$200.00 | 258... \$35.00 | 313... \$95.00 | 369... \$30.00 | |
| 36..... \$50.00 | 92..... \$15.00 | 148... \$45.00 | 203. \$900.00 | 259... \$35.00 | 314... \$10.00 | 370. \$105.00 | |
| 37... \$110.00 | 93..... \$65.00 | 149... \$75.00 | 204. \$240.00 | 260... \$35.00 | 315... \$10.00 | 371... \$30.00 | |
| 38... \$150.00 | 94..... \$60.00 | 150... \$25.00 | 205. \$150.00 | 261... \$50.00 | 316... \$40.00 | 372... \$40.00 | |
| 39..... \$15.00 | 95..... \$30.00 | 151... \$20.00 | 206. \$100.00 | 262... \$45.00 | 317... \$40.00 | 373... \$20.00 | |
| 40..... \$70.00 | 96..... \$75.00 | 152... \$50.00 | 207... \$40.00 | 263... \$20.00 | 318. \$120.00 | 374... \$20.00 | |
| 41... \$200.00 | 97... \$110.00 | 153... \$12.50 | 208... \$70.00 | 264. \$450.00 | 319. \$100.00 | 375. \$130.00 | |
| 42..... \$70.00 | 98... \$600.00 | 154... \$25.00 | 209... \$95.00 | 265. \$105.00 | 320... \$110.00 | 376. \$150.00 | |
| 43..... \$40.00 | 99..... \$15.00 | 155... \$20.00 | 210. \$275.00 | 266... \$45.00 | 321... \$95.00 | 377. \$175.00 | |
| 44..... \$60.00 | 100... \$80.00 | 156. \$150.00 | 211. \$150.00 | 267... \$10.00 | 322... \$35.00 | 378.... \$5.00 | |
| 45... \$200.00 | 101... \$15.00 | 157... \$55.00 | 212. \$160.00 | 268... \$20.00 | 323... \$20.00 | 379... \$20.00 | |
| 46..... \$65.00 | 102..... \$3.00 | 158... \$35.00 | 213. \$170.00 | 269... \$65.00 | 324. \$150.00 | 380... \$75.00 | |
| 47... \$150.00 | 103... \$40.00 | 159... \$77.00 | 214... \$35.00 | 270. \$400.00 | 325... \$25.00 | 381. \$150.00 | |
| 48..... \$5.00 | 104... \$35.00 | 160... \$10.00 | 215... \$50.00 | 271. \$175.00 | 326. \$300.00 | 382. \$100.00 | |
| 49..... \$10.00 | 105. \$220.00 | 161... \$90.00 | 216... \$40.00 | 272. \$425.00 | 327. \$250.00 | 383... \$25.00 | |
| 50..... \$35.00 | 106... \$30.00 | 162. \$175.00 | 217... \$20.00 | 273... \$60.00 | 328. \$150.00 | 384... \$25.00 | |
| 51..... \$25.00 | 107. \$160.00 | 163... \$55.00 | 218. \$275.00 | 274... \$40.00 | 329. \$250.00 | 385. \$165.00 | |
| 52..... \$25.00 | 108. \$175.00 | 164. \$475.00 | 219. \$150.00 | 275... \$75.00 | 330... \$15.00 | 386... \$25.00 | |
| 53..... \$50.00 | 109... \$15.00 | 165... \$45.00 | 220... \$30.00 | 276... \$30.00 | 331... \$80.00 | 387. \$160.00 | |
| 54... \$300.00 | 110... \$45.00 | 166. \$120.00 | 221... \$40.00 | 277... \$40.00 | 332... \$25.00 | 388... \$80.00 | |
| 55..... \$55.00 | 111..... \$5.00 | 167... \$25.00 | 222... \$50.00 | 278... \$40.00 | 333... \$75.00 | 389... \$25.00 | |

Announcement

On Wednesday, May 8, as part of their annual seminar, the National American Glass Club (NAGC) is bringing a bus load of glass enthusiasts to the National Museum of Cambridge Glass. Their annual seminar, running from Wednesday, May 8 through Saturday, May 11, is packed with visits to 11 glass-rich sites, spread over three states (Pennsylvania, Ohio & West Virginia) in the first 3 days, followed on day 4 by a day of presentations, glass displays, and a banquet highlighted by a silent auction.

NAGC encourages us to participate in all or part of the seminar. Details on the seminar plans and registration are posted on their website: <http://www.glassclub.org>.

Contact the seminar committee, Karen Petraglia (karenpetr@gmail.com, 603 714-1249) or Loreen Ryan (loreen_ryan@msn.com, 914 337-5554), with questions or concerns.

Available at the NAGC seminar silent auction. Must be present at auction to bid.



WANTED

Glass Dash Participants

We are on the lookout for several interested glass dealers for the 2019 Glass Dash which will be held Saturday June 29, at the St. Benedict's Gym, the same location as the past several years. The dash is where everyone gets the same chance to add that rare item to the collection. We are looking for anyone that is wanting to reduce their collection or just has too much. This is a great venue to reduce your collection and add that rare item. If interested in joining the fun, please contact Frank Wollenhaupt by email at fewvic303@sbcglobal.net or just give him a call at 937-475-2889.

Recent Finds



Georgian Carmen basket strange handle



Let's Retain and Recruit new members

*The 84th Show
Sponsored by the Del-Mar-Va Depression Glass Club*

2019 Show and Sale

*All American: Pattern, Elegant, Art Deco & Depression-Era
Glassware, China, Kitchenware, Pottery, Books & Linens*

Special Display: "Captivating CARNIVAL GLASS!"

Saturday, **April 6, 2019** 10 am - 5 pm

Sunday, **April 7, 2019** 10 am - 3 pm

**DuVal High School
9880 Good Luck Road at Greenbelt Road
Lanham, MD 20706**

BW Parkway to Route 193 East – Greenbelt/NASA
(about 2.5 miles to DuVal H.S.)

*****Glass Identification - Door Prizes - Food*****

INFO: 202-445-4208 / 301-773-6234

Email: Greg.Vass76@icloud.com

Admission: \$5.00

NCC Events

**2019 NCC Convention
June 26-29, 2019**

Member Benefit

Each NCC household is allowed one free 20-word classified ad in the Crystal Ball per calendar year as part of their membership. This can be a "For Sale" or "Wanted" type of classified ad. Submit your ad by email to editor@cambridgeglass.org

CLASSIFIEDS

WANTED: Looking for 3400/98 Royal Blue creamer to pair with lonely sugar.
christine_smith@owens.edu



NCC welcomes the following new members

| | |
|----------------|----|
| David Redloh | WI |
| Kreg Redloh | WI |
| Tim Schlichter | AZ |
| Thomas Yockey | WI |

April 6-7, 2019

Del-Mar-Va Depression Glass Club
2019 Show and Sale
DuVal High School
Lanham, MD 20706
Greg.Vass76@icloud.com

Glass Shows

April 12-13, 2019

North Jersey Depression Glass Club 22nd Annual Spring Show
Church Of The Guardian Angel
320 Franklin Turnpike
Allendale NJ
<https://www.facebook.com/northjerseydepressionglassclub/>

April 27-28, 2019

Brilliant Glass in Corning Show
The Corning Museum of Glass
Corning, NY 14830
703-425-5574

April 27-28, 2019

Great Lakes Depression Glass Show & Sale
Madison Place / 876 Horace Brown Dr
Madison Heights, Mi 48071
<http://www.depressionglassclub.com>

May 3-4, 2019

Eastern National Antiques 64th Annual Spring Show
Carlisle Expo Center
Carlisle, PA
<http://easternnationalantiques.com/>

May 4-5, 2019

Retro American Glass Show and Sale
St. Mary's Crystal Chalet
3600 Biddulph Ave.
Cleveland, OH 44109
wragclub@gmail.com

May 17-18, 2019

Valley Glasshoppers Spring 2019 Glass Show & Sale
1309 Opequon Ave
Winchester, VA 22601
<http://valleyglasshoppers.org>

June 1-2, 2019

Old Morgantown Glass Show & Sale
Westover VFW
340 Holland Ave
Westover, WV
<http://www.oldmorgantown.org/>

June 6-9, 2019

National Imperial Glass Collectors Society 43rd Convention
National Imperial Glass Museum
Bellaire, OH
<http://imperialglass.org/>

DEALER DIRECTORY

Dealer Directory - \$24 for 12-months, size limited by box (see below). Includes listing on NCC website.

Advertising Rates:

1/8 page \$15 1/4 page \$20
1/2 page \$30 Full page \$50

Electronic submissions should be emailed to:

editor@cambridgeglass.org

Use Word. Mailed submissions and all payments should go to PO Box 416, Cambridge, OH 43725. Deadline is 10th of preceding month. Ads must be paid in advance. Show listings are FREE; send info to PO Box or e-mail address 60 days before event.

Be sure to tell dealers that you saw their ad here.

Heirloom Glass Antiques & Gifts Large Selection Of Cambridge

13411 Columbia Hwy.
Lynnville, TN 38472
www.heirloomglass.net 931-446-5492
juanita@heirloomglass.net

CRYSTAL LADY

1817 Vinton St. Omaha, NE 68108
Bill, Joann and Marcie Hagerty
402-699-0422

Specializing in Elegant Glass & Collectibles
www.crystalladyantiques.com

ISAACS ANTIQUES

(740) 826-4015

☞ located in ☜

Penny Court Mall

637 Wheeling Ave
Cambridge, OH

Glen & Carolyn Robinson
White Rose Antiques
Specializing in Depression Era Glassware

2454 McFarland Road
York, SC 29745

803-684-5685
gandcrobinson@aol.com
whiteroseglassware.com

CRYSTALLINE COLORS

Cambridge • Fostoria • Elegant Glass
Penny Court Mall, Cambridge - 2 booths
Medina Antique Mall
Medina, OH (I-71, exit 218)

Lynne R. Franks 216-661-7382



Connecting Buyers & Sellers!

Tell us what you are looking for and we help find it.

CAMBRIDGE GLASS.US

P. Snyder 740-601-6018

E-Mail and Find Your Glass!

psnyder@cambridgeglass.us
www.cambridgeglass.us

When you are searching for Cambridge glass, email your request and it is emailed to all members and dealers.
P. Snyder, 1500 Edgewood Dr., Circleville, Ohio 43113

Virtualattic at The Glass Chalet

Specializing in
Elegant Depression Era Glass

Sandra L. Bridwell-Walker

PO Box 726
Newcomerstown OH 43832-0726
817-659-0328
virtualattic7@gmail.com theglasschalet@gmail.com

Max Miller

Elegant American Glassware
www.maxmillerantiques.com

The Market Place 713-410-4780
10910 Katy Freeway.
Houston TX 77043 mmxglass@aol.com

BAKER FAMILY MUSEUM

805 CUMBERLAND ST.
CALDWELL, OHIO 43724
740-732-6410

bakermuseumnellbaker@msn.com
Wed & Thurs 9-4; Fri - Sat 9-5

MARGARET LANE ANTIQUES

2 E. Main St. New Concord, OH 43762
Lynn Welker (740) 705-1099

Cambridge Glass Matching Service
Hours: Mon-Fri 10-12 AM, 1-5 PM
or by appointment

Our House Antiques

Linda and David Adams

Las Vegas, NV

1-800-357-7169

www.OurHouseAntiques.com

email: David@OurHouseAntiques.com



Bobbi's Place INC

Elegant Glassware & Fine Antiques

Angela Honeycutt
Owner

P.O. Box 548
Hartville, OH 44632
330.546.3643

bobbisplace31@gmail.com

National Cambridge Collectors, Inc.
PO Box 416
Cambridge OH 43725
email: editor@cambridgeglass.org
website: www.cambridgeglass.org



Friends of Cambridge – Annual Fund

NCC exists through member giving using an Annual Fund system to raise operating funds and to ensure the preservation of Cambridge glass for future enthusiasts. The Annual Fund uses a common member "renewal" date and NCC sends out Annual Fund materials to everyone once a year. There are no monthly reminders or monthly renewal dates. The Annual Fund is NCC's primary means of support and all Annual Fund gift recognition levels are per household and include membership for all adults within the household. Additionally, each household will receive a subscription to the Crystal Ball newsletter, unlimited admissions to the museum, and rights to vote in elections for the Board of Directors. Multiple households at the same address are welcomed. NCC is a 501(c)(3) organization and Annual Fund gifts are allowed as a tax deduction under Section 170 of the Internal Revenue Code.

Levels of Membership

| | |
|-------------------------|---------|
| Patron | \$35 |
| Benefactor - Century | \$100 |
| Benefactor - Mardi Gras | \$200 |
| Benefactor - Japonica | \$500 |
| President's Circle | \$1,000 |

President's Circle includes Convention registration for two members in the household and one copy of any new NCC publications.

The National Museum of Cambridge Glass

Located at 136 S. 9th Street
in downtown Cambridge
Wed-Sat 9-4
Sunday 12-4

