



Cambridge Crystal Ball

Published by the National Cambridge Collectors, Inc. as a resource which informs, invites and inspires people to encourage the continued preservation of the glass produced by the Cambridge Glass Company of Cambridge, Ohio for future generations.

Issue No. 514

ISSN 2474-5987

January 2018

IT'S AUCTION TIME!

by Bev & Will Acord

We are excited about the wonderful selection of Cambridge glass in this year's auction to be held on Saturday, March 3, 2018 at the Pritchard Laughlin Civic Center. The preview begins at 8:30 a.m. and the auction starts promptly at 9:30 a.m.

You can review the catalog included in this issue and visit www.cambridgeglass.org to view all the great photographs. We have a fantastic collection of group shots as well as individual shots of each lot.

We began preparations for the 2018 NCC Auction in August when consignors sent us their proposed lists. Like last year, there were many consignors who submitted a little less than 1000 items to select from. In order to limit the auction to one day we narrowed the selection to 424 items. This is one of the hardest parts of the process as there was so much wonderful glass to choose from. Those items that were not selected please hold until next year!

We utilized the Yellow house next to the Museum to unpack, photograph, sort into auction order and repack the glass for safe storage and later transport to the Pritchard Laughlin Civic Center for the auction. We would like to thank those who helped in making this very important auction preparation go smoothly: Larry and Susan Everett, Frank and Vicki Wollenhaupt, David Rankin and Lynn Welker. This is not easy work; we really could not do without you.

And to all those who have so graciously offered their help and support for all the work it will take setting

up the auction and working auction day, thank you as well. And thanks to the consignors who provided all the wonderful glass.

So start making your selections of the items you are going to bid on now! Make your hotel reservations right away to join us for the auction, March 3rd 2018 as well as the Friday night quarterly meeting and "Auction Preview" presented by Lynn Welker on March 2nd.

This is one of NCC's most important fund raising activities. See you at the auction!



What's Inside

It's Auction Time	1
President's Message	3
Oh What a Season!	4
Fall Membership Meeting Minutes	7
2018 Benefit Auction Information	8
2018 Benefit Auction Listing	9
European Influence on the Everglade Line	17
eBay Report	18
Holiday Table Settings	20

National Cambridge Collectors, Inc.

PO Box 416 Cambridge, OH 43725-0416

Board of Directors

2018

Julie Buffenbarger Doug Ingraham David Ray

2019

Rick Jones Lindy Thaxton Lynn Welker

2020

Cindy Arent Larry Everett Sharon Miller

2021

Sandra Bridwell-Walker Ken Filippini Freeman Moore

Officers

President	Rick Jones
Vice-President	Doug Ingraham
Secretary	Sharon Miller
Treasurer	Sandra Bridwell-Walker
Sergeant-at-Arms	Larry Everett

Director of Strategic Planning	Ken Filippini
Director of Human Resources	David Ray
Chair, Endowment Committee	Doug Ingraham

ADDRESS CHANGES

Please send address changes to:
Membership - NCC
PO Box 416
Cambridge, OH 43725-0416
or by e-mail to:
membership@cambridgeglass.org

Vice President

Member Relations
Convention
Digital Media
Glass Dash
Glass Show
Study Groups
Webmaster

Member Services

Freeman Moore
Freeman Moore - Membership Database
Rick Jones - Convention Director
Alex Citron - Manager of Facebook Operations
Larry Everett & Frank Wollenhaupt
Sandra Bridwell-Walker
Jeannie Moore - Study Group Coordinator
David Adams

Vice President

Campaigns

Events

Projects
Publicity

Development

Julie Buffenbarger
Ken & Jane Filippini - Annual Fund Directors
Larry Everett - Director of the Heritage Society
Bev & Will Acord,
Lynn Welker - Auction Managers
Carl Beynon - Jeweler & Scotties Project Manager
Jonathan Fuhrman

Education

Larry Everett
Freeman Moore - Executive Editor
Mark Nye - Director of Publications
Dave Rankin - Director of Media Productions
Mark Nye - Archivist
Greg Vass - Director of Programming

Vice President

Crystal Ball
Publications
Media Productions
Research
Programming

Museum

Cindy Arent
Sandra Bridwell-Walker - Docent
Julie Davey - Docent
Jessica King - Docent
Sandi Rohrbough - Docent
Betty Sivard - Docent
Kayla Wyers - Docent
Carl Beynon - Director of Facilities
Lynn Welker - Director of Collections
Lynn Welker - Gift Shop Manager
Cindy Arent - Gift Shop Manager
Mark Nye
Cindy Arent

Vice President

Public Operations

Facilities & Grounds
Collections
Merchandise Sales

Archivist
Community Relations

Administration

Vice President

Accounting & Finance
Information Technology

Doug Ingraham (acting)
Lisa Neilson - Office Manager
(vacant)



CONTACT US

136 South 9th Street
Phone: 740 432-4245
nccglass@yahoo.com



Rick Jones, President
e-mail: president@cambridgeglass.org
Sharon Miller, Secretary
e-mail: secretary@cambridgeglass.org

Heritage Society

Ensuring the preservation mission of the NCC through planned giving and estate bequests.

Members of The Heritage Society are those who have included the NCC in their wills or estate plans, thus providing the organization with a secure future.

The mission of The Heritage Society is to foster smart estate planning and to assure that NCC is not forgotten as an important beneficiary. Any pledge is meaningful and appreciated.

All Cambridge collectors - both current and future - will benefit from, and be grateful for your support.

Let us know how we can help with your future plans.

NCC Website: www.CambridgeGlass.org

Miami Valley Study Group Website: www.mvsg.org



PRESIDENT'S MESSAGE

A Great 2017, A Bright 2018

As I sit here in mid-December getting ready for the Holidays, it is a great chance to reflect on the year in Cambridge Glass and take a peek at what the future may hold for 2018.

I'm pleased to say it was another very good year for your club. We are in a strong financial position and our Museum has never looked better or been more successful in its outreach and education efforts. There were three very good member meetings – the Auction in March, Convention in June and our Fall Meeting in October.

The Museum had its most successful fourth quarter ever, in collaboration with Cambridge's Dickens Village celebration. Thanks to the ingenuity of Cindy, Lindy and their whole team we had several stand out bus tours that produced record sales in our Gift Shop. The month of November alone topped what we used to sell in a whole year.

As they wrap up operations for the year, we are looking forward to new carpeting being installed this month and new lighting not long into the New Year. NCC must keep up with the normal wear and tear the Museum experiences during the year, so that each year we can always put our best foot forward.

Our neighboring brick building next door was fully rented for the year. The yellow building is being used effectively for Auction prep and gift shop storage. And, we should have these two properties completely paid for soon. It's a high NCC priority.

Reports are very encouraging for the 2018 Benefit Auction. Consignments sound great and you can read all about it in this issue. Please make plans now to join us in a couple of months.

Once again in 2017, we saw an increase in attendance at our Annual Convention. Our theme of "Animals" was warmly embraced and we had outstanding education presentations by Lynn Welker and Zak McCamey. We had marvelous displays in Pritchard Laughlin that not only featured animals made by Cambridge, but also over 30 other glass companies. It was a great learning experience and we thank all of our

displayers for their generosity in sharing their collections with the rest of us. It was quite an honor.

Speaking of honors, we saw Lynn Welker named a Lifetime Member of NCC, our highest honor and so richly deserved. We also surprised and saluted Jane Filippini as this year's Phyllis Smith Award recipient. And, we said a hearty thank you to David Ray for his seven consecutive years serving this organization as your President. He got a richly deserved standing O.

In October, Greg Vass organized our Fall Member Meeting with a salute to Fall Colors. Once again, Lynn Welker did the honors as presenter. Our thanks to both of them and all who attended.

Our Annual Fund Drive will finish 2017 up over 7% vs. the previous year. Your Board thanks you so much for your support and this member commitment makes everything we do possible. We'll have more on this year's Annual Fund in an upcoming Crystal Ball issue.

For 2018, we are looking to continue to grow our Endowment Fund, which is now approaching a half a million dollars. We've also accelerated our budget timing and are being even more goal-oriented. Some top priorities include Museum lighting, continued alterations/improvements of our yellow building, improved storage capabilities and investing in new scanner technology. We also want to boost gift shop stock in support of the great sales we have experienced.

Our June 2018 Convention theme is "Games" and we want to continue making this a fun event that draws Cambridge collectors from around the country. It certainly is a highlight of the year for me and I look forward to seeing all our friends.

Thank you for being a Friend of Cambridge. It is a real honor to serve on your Board and we are all dedicated to advancing our mission of education and preservation each and every year.

We wish you the happiest of New Years and best wishes for a healthy and successful year.

Rick Jones

president@cambridgeglass.org



Oh What a Season!

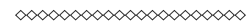
By Cindy Arent



In the November/December issue of the Crystal Ball, we were busy preparing for the Holiday Season at the museum and “Oh What a Season” it turned out to be! The theme for the museum holiday season was “Christmas at the Glass House”. New during “Christmas at the Glass House” was a Cambridge Arms line demonstration done by Lindy Thaxton that was quite popular. Lindy talked about the history of Cambridge Arms and how to assemble an arrangement. She then chose someone from the group to actually build a centerpiece. Once they learned about the Cambridge Arms and the versatility of each part, many purchased pieces or complete sets. One man that bought a complete set said, “I knew when I held the pieces in my hands, I just had to have them”.

During November and December, 22 bus groups toured the museum from Ohio, Pennsylvania, New York, Illinois, New Jersey and even California. Many thanks to Bev Kerr, Dickens Victorian Village Group Tour Coordinator, for her outstanding efforts in scheduling these national group travel companies and to our museum volunteers that met each bus with enthusiasm

and smiles on their faces. It isn’t easy to handle a group of 55 people inside the museum and give personal attention to each person, it takes team work. Following is one of the TripAdvisor reviews posted by one of our guests:



Great Docents and Far More Interesting Than I Imagined

First, the Museum people run one of the best museum “tours” I’ve been on. When we were there, the docents were in early 1900s dress which added a nice touch. The tour is about an hour and of course you can spend more time afterwards looking around. Cambridge Glass operated for 50 years or so and created incredibly beautiful glass -- everything from door knobs to knife holders to lab equipment and children’s toys



Dressed and ready to greet the first bus of the holiday season are museum volunteers: (L – R) Sarah Carpenter, Sharon Bachna, Cindy Arent, Betty Sivard, Lindy Thaxton, Sandi Rohrbough and Sharon Miller. It usually takes at least 10 volunteers to greet each motorcoach group.

Bill Eckman and Evalyn O’Reed created a Cambridge Arms masterpiece after the demonstration!

(who today would let kids play with glass?). YOU WON'T BELIEVE THE INGENUITY OF FOLKS BACK IN THE DAY. Different parts of the tour have participants making color pencil etchings from the original steel plates used to make the designs that went on the glass. In 15 min, you'll understand the really fascinating process by which glass gets etched into amazing designs. LOVED IT. Museum is located in town, very easy to find and has a parking lot.

Holiday motorcoach volunteers were: Sandi Rohrbough, Lindy Thaxton, Cindy Arent, Sally Slattery, Betty Sivard, Gary Wiseman, Sharon Miller, Sharon Bachna, Diana McMahan, Sarah Carpenter, Karen Treier, Reggie Gerko, Betty Davis, Margene Osterberg, Eli Evans, Marybelle Teters, Bobbie Henderson and Jeff Ross. A special "Thank you" to these volunteers for their dedication in greeting hundreds of visitors during the holiday season.

The Annual Museum Holiday Open House was held Friday – Sunday Thanksgiving weekend and was very well attended. Visitors caught the spirit of the season as they were led on guided tours of all areas of the museum. They also did lots of shopping in the museum gift shop! On "Shop Small" Saturday, we even had canvas Shop Small bags to pack gift shop purchases courtesy of Cambridge Main Street.

Our holiday marketing efforts were spot on this year. In addition to the museum holiday rack cards, the special days of operation were promoted on the

museum Facebook page, newspaper, the NCC, Dickens Victorian Village and Visitors Bureau websites and radio. After posting photos of the Cambridge ornaments that we make and additional items like the Cambridge cup & saucer sets and the Cambridge stem in a gift box promotion, we shipped orders all over the country. Many thanks to our cyber buyers!

The final day of museum operation for 2017 is December 17. We will then be packing up the gift shop, moving the reception desk and other items in preparation for the installation of new carpet. It's hard to believe that it's been 17 years since the current carpet was installed. It is now disintegrating and has raised bumps in the high traffic areas. More info will follow in the February issue of the Crystal Ball.

Happy New Year to all and best wishes for a wonderful 2018!

Who wouldn't want a gift box with two Cambridge champagnes like the ones used in the classic holiday movie, *White Christmas*? Congratulations to Kinsi (Carpenter) King! Thank you for visiting and shopping at the museum during our Holiday Open House on Small Business Saturday.



Holiday Open House visitors Brad and Donna Gotschall enjoyed the etching plates.

Brad's parents, Dale and Peg Gotschall, were editors of the Crystal Ball in the early 1980's.





Staff and volunteers from the Ohio Glass Museum in Lancaster, Ohio came to the museum for the tour program during the holiday season.

NCC members Chuck Eyan and Sherry Crawford visited the museum during the Holiday Open House. They loved the Hollywood display!

Auction co-manager Bev Acord checking one more item on the proposed auction list.



Quiz

Do you know the proper terms for the different sizes of plates?

How many different lines made by the Cambridge Glass Company, included a dinner plate?

Watch for the answers in a future issue!



Recruitment and Retention

When you are out shopping or looking for Cambridge glass, make an effort to share information about NCC. If you sell items online, consider sharing information about NCC with your buyers.



I want you!

NATIONAL CAMBRIDGE COLLECTORS, INC.

Fall Membership Meeting – October 21, 2017

Vice President, Doug Ingraham called the Fall Membership Meeting of the National Cambridge Collectors to order on October 21, 2017 at 7:00 pm.

Doug asked the secretary to read the minutes from the Annual Membership Meeting held on June 23, 2017. A motion was made by Larry Everett and seconded by Frank Wollenhaupt to dispense with the reading of the minutes. The motion was approved. A motion was made by Nancy Finley and seconded by Jim Miller to accept the minutes from the Annual Membership Meeting as published in the September 2017 Crystal Ball. The motion was approved.

Treasurer Sandra Bridwell-Walker gave the treasurer's report. The balances ending as of September 30, 2017 were as follows: Bank Balance - \$82,264.63; Pay Pal - \$1,061.31; Endowment - \$457,910.68

The Vice Presidents reports were given.

Administration/Endowment – Doug Ingraham reported that there has been a change in policy in regard to donations. These changes now are in line with the IRS requirements. The November Crystal Ball will have an article about the ability of members who are 70 ½ have the option to donate the required distributions from their retirement accounts to be given to NCC tax free. Doug announced that as of today, October 21, 2017, the Endowment account is slightly over \$463,000.

Development – Bev and Will Acord gave an auction report. About 95% of the auction items are in. The catalog and pictures will be published in the January 2018 Crystal Ball. Doug thanked the Acords for their hard work preparing for the auction.

Education – Larry Everett thanked Greg Vass for planning a wonderful program of Cambridge Fall Colors. The display was breath-taking. Larry encouraged members to submit articles for the Crystal Ball noting that Freeman does an outstanding job of publishing but would appreciate any submissions. Larry asked for ideas for future programs that would be of interest to the membership. Larry and Lynn provided the membership with an update of the Fenton moulds that had been of interest to the club. They explained why NCC was no longer interested in the moulds that were for sale. Fenton is retaining, for their use, the three moulds NCC was interested in purchasing. These moulds are the snail vase, 1242 vase and the 3400 globe vase. Fenton will be using these moulds to produce items for their gift shop.

Member Services – Freeman Moore reported the goal of Member Services this year will be Recruitment and Retention of members. Freeman noted that communication with members is important for member retention. There are over 500 member households and not all can come to all events so reaching out to these members is vital. Efforts will be made to make NCC more visible to the general public at glass shows and sales with rack cards and brochures.

Museum – Cindy Arent introduced the museum docents who were in attendance, Betty Sivard, Sandy Rohrbaugh, Sandy Bridwell-Walker and Jessica King. Cindy announced that the museum will be open from 12:00 – 4:00 on weekends in November and December. The Open House will be on Thanksgiving weekend. There are 20 tour busses scheduled during these months. The new HVAC unit has been installed on the roof and the city of Cambridge will pay ½ the cost. The carpet in the museum will be replaced after the closing of the museum on December 17th. The LED replacement lighting will be in phases. Phase 1 has been completed and cost \$2,000. The raffle at the auction and the rebate from AEP reduced the cost to NCC to approximately \$1,000. Phase 2 will replace the vertical lighting in the showcases. Phase 3 will be the ceiling fluorescents and some exterior lighting. The storage building has been cleaned up and trash hauled away. The fork lift needs to be repaired so boxes and skids can be put up on shelves.

Committee Reports – None

Old Business – None

New Business – None

There being no further business, Doug asked for a motion to adjourn the meeting. Frank Wollenhaupt made a motion to adjourn the meeting. A second was made by Allan Cohen. The motion was approved.

Following the business meeting, Lynn Welker conducted a very informative program about the Fall Colors of Cambridge. Lynn thanked to the members who brought items for the program. A great Show and Tell concluded the activities for the evening.

Respectfully submitted,
Sharon Miller, secretary

National Cambridge Collectors, Inc.

2018 Benefit Auction

Saturday, March 3, 2018

Pritchard-Laughlin Civic Center

7033 Glenn Highway • US 40, West • Cambridge, Ohio

INFORMATION

Preview at 8:30 a.m. Auction starts at 9:30 a.m.

Craig Connelly, Auctioneer Admission: \$2.00

All glass in the auction is guaranteed to be Cambridge. The Auction Managers have checked all glass carefully for verification and damage. Any piece purchased should be examined immediately by the purchaser, and returned within five items if not as represented. All damages are indicated in this catalog; last minute changes or addenda will be announced by the Auction Managers immediately prior to the auction. If no color is indicated herein, the item is crystal. There are no reserves and no buyer's premiums are charged.

TERMS: Payment is expected in cash the day of the sale; checks will be accepted with proper identification.

CATALOG: Lots will be sold in the order printed herein. A number in parenthesis () at the end of a listing indicates the number of that item available for sale. The auctioneer will announce whether such multiples are being sold individually or as a lot. If multiple items are being sold individually, a winning bidder may take any number available. If the catalog indicates "set," "pair" or a similar term, the lot is sold as such.

ABSENTEE BIDS: Anyone wishing to bid absentee, may do so by mailing their bids to the Auction Committee at the address below. All bids must be received by the end of Thursday prior to the auction to be eligible, so please allow enough time for the postal service to do its thing. **They must contain all the following information:**

- List showing the lots desired and the maximum bid for each lot.
- Valid Credit Card, VISA & MasterCard accepted. The following is required for a proper credit card transaction:
 1. Exact name as it appears on the card
 2. Expiration date
 3. 3-Digit Security Code on the back
 4. Exact address credit card statement is billed to
 5. Phone number
- Address where winning lot(s) are to be shipped to.

Bids will be executed secretly and a winning bidder will pay only the final auction price. If there are multiple absentee bids for the same lot, bidding will commence on the floor at the second highest bid, effectively shutting out all by the highest absentee bidder.

Shipping: Items can be shipped to street addresses only. WE CANNOT SHIP TO P.O. BOXES. If you are the successful bidder, your credit card will be charged as follows: **Final auction price + 5% transaction fee + cost of shipping.**

MAILING ADDRESS: All absentee bids must be mailed to:

NCC Auction Managers
P.O. Box 416
Cambridge, OH 43725

**BIDS MUST BE RECEIVED BY
THURSDAY, MARCH 1, 2018 TO BE ELIGIBLE**

QUARTERLY MEETING: The Quarterly Meeting of the NCC will be held on Friday, March 2 at 7:30 p.m. A preview of the auction glass will be presented. Show & Tell glass is also welcome at the meeting. All are welcome!

For additional copies of the catalog listing as well as detailed information on the entire auction, please visit the website at <http://www.cambridgeglass.org> under **Annual Auction.**

Additional copies of this catalog are included with admission to the auction.

2018 NCC Benefit Auction Listing

- | | | |
|----|-------|---|
| 1 | _____ | 147 Crystal Marmalade and lid, #405 Etch |
| 2 | _____ | 101 Crystal Mt. Vernon 2 part handled Relish |
| 3 | _____ | 3400/11 Crystal Mayonnaise Bowl and liner etched Diane |
| 4 | _____ | 993 Crystal Rock Crystal Engraving 985 Maryland 12" 4 ftd. Bowl (minor scratches) |
| 5 | _____ | 172 Amber Wetherford 6¾" Comport |
| 6 | _____ | 59 Amber Wetherford 4½" bowl |
| 7 | _____ | 533 Light Emerald Mayonnaise Bowl and liner with #725 Etch |
| 8 | _____ | 3125 Gold Krystol Tall sherbet with Deauville Etching (2) |
| 9 | _____ | 3104 Crystal 5 oz. Tall hock |
| 10 | _____ | 1070 Amber 36 oz. Pinch Decanter with crystal golf ball stopper and 2 oz. Pinch Tumblers (6) |
| 11 | _____ | 693/3000 Crystal 3 oz. Canapé set with Gold Encrusted golfer |
| 12 | _____ | P575 Crystal 9" cornucopia with Chantilly etching (Pair) |
| 13 | _____ | 1066 Emerald Green 7" Ivy Ball, Emerald Green, (some staining) |
| 14 | _____ | 518 Peach-Blo 8½" Draped Lady Flower Holder |
| 15 | _____ | SS50 Crown Tuscan 8" Dolphin Candlesticks (pair) |
| 16 | _____ | 652 Crystal 10" 3-lite Candelabrum, Includes #1596 6" candlestick with RC Engraving Manhattan (1), #1432 3-candle arm (1) |
| 17 | _____ | 188 Amethyst Caprice 2 oz. Tumbler (2) |
| 18 | _____ | 1300 Crown Tuscan 8" ftd. Vase, Gold Encrusted Diane |
| 19 | _____ | 732 Pomona Green 12" 4 ftd. Bowl, Gold Encrusted Etch #619 |
| 20 | _____ | 1042 Peach-Blo 6½" Swan, Type 1, signed |
| 21 | _____ | 3900/120 Gold Krystol 5 part relish etched wildflower |
| 22 | _____ | 760 Willow Blue 7" Basket (handles pulled up), etched Cleo, signed |
| 23 | _____ | 3500/57 Crown Tuscan 8" 3 part Covered Candy Gold Encrusted Wildflower, RARE |
| 24 | _____ | 300 Ebony 7" Covered Candy 3 ftd. Gold Encrusted Wildflower |
| 25 | _____ | 3122 Carmen Goblet, 9 oz., 7" tall |
| 26 | _____ | 494 Crystal Cup with Cream Soup Liner, Green Enamel Willow etching, Gold edge |
| 27 | _____ | 3104 Royal Blue 3 oz. Wine |
| 28 | _____ | 3126 Heatherbloom 7 oz. tall Sherbet, etched Portia |
| 29 | _____ | 1633 Crystal 2 peg vases etched Chantilly |
| 30 | _____ | 1020 Ebony Cocktail Shaker with D185 Dancing Nudes (top missing) |
| 31 | _____ | 1042 Crown Tuscan 8½" Swan, Type 3 |
| 32 | _____ | 1357 Crystal Caprice 3-Lite Candelabrum, Cambridge Label on Base |
| 33 | _____ | 300 Crystal Caprice 3 oz. Cocktail (4) and 6 oz. Sherbets (6), (Lot) |
| 34 | _____ | 628 Crystal Cambridge Arms Base, #1562 Arms (2), #1633 5" Peg Vases (2) (Lot) |
| 35 | _____ | 33 Emerald Green 4 IN, 3 Ftd. Ashtray with Charleton Décor |
| 36 | _____ | 35 Emerald Green 4 1/2 X 3 1/2 , 4 Ftd. Cigarette Box with Charleton Décor |
| 37 | _____ | SS31 Emerald Green 8" 3 Ftd. Oval Bowl with Charleton Décor |
| 38 | _____ | 135 Emerald Green 5" Low Comport, Corinth with Charleton Décor |
| 39 | _____ | 136 Emerald Green 5½" Tall Comport, Corinth with Charleton Décor |
| 40 | _____ | 95 Ivory 1 lb. Candy Jar & Cover |
| 41 | _____ | 3400/38 Crystal 80 oz. Ball Jug, Sterling Overlay Grape Décor |
| 42 | _____ | P576 Crystal 9" Crimped Cornucopia Vase with Charleton leaves & Gold |
| 43 | _____ | 1191 Crystal Cherub Candlesticks, (Pair), Hard to Find |
| 44 | _____ | 3400/647 Crystal 6" 2-Lite Candelabrum, Gold Encrusted Elaine (Pair) slight wear |
| 45 | _____ | 2653 Crystal Nearcut Ribbon ½ Gallon Tankard Jug, Ruby Flash and Gold, signed |
| 46 | _____ | 3116 Crystal 1 oz. Cordial w. RC 895 Sonora Cutting |
| 47 | _____ | 74 Ebony 7" Candlestick w. Iridized Gold Cattail Decoration |
| 48 | _____ | SS2 Crown Tuscan 7" Sea Shell Salad Plate w. Blue Mist Charleton Decoration |
| 49 | _____ | 3 Crystal 9" Martha Washington Candlesticks - (Pair) |
| 50 | _____ | 84 Azurite 12" Cylinder Vase |
| 51 | _____ | 496 Various 12 oz. Tall Joe Tumblers (4) Amethyst, Tahoe Blue, Pink and Pistachio (set) |

52	_____	563 Carmen 6" Pristine Sharp Crimped Vase
53	_____	87 Ebony 1 lb Candy Jar and Lid
54	_____	1330 Amethyst Sweet Potato Vase, paper label
55	_____	1330 Amber Sweet Potato Vase, Wide Optic
56	_____	1330 Forest Green Sweet Potato Vase
57	_____	1330 Royal Blue Sweet Potato Vase
58	_____	1330 Carmen Sweet Potato Vase
59	_____	3400/14 Heatherbloom 7" Tall Comport, Etched Diane
60	_____	1314 Heatherbloom Ashtray, Etched Diane, Crystal Stem/Foot
61	_____	3011 Crystal Statuesque Flared Comport, Etched Diane
62	_____	1302 Crown Tuscan 9" Vase, Gold Encrusted Portia Etch
63	_____	1066 Crystal Cigarette Holder, RC Engraved Achilles
64	_____	1311 Carmen 4" Footed Ash Tray
65	_____	1311 Crystal 4" Footed Ash Tray Etched Diane
66	_____	1402/94 Crystal Tally-Ho Celery, 12" with 765 Vichy etch
67	_____	74 Crystal Stratford Honey Jar and Cover
68	_____	3111 Crystal Cordial with D/1048 Gold Encrusted Candlelight
69	_____	1402/1 Crystal Tally-Ho 18 oz. Goblet, 718 Imperial Hunt etching
70	_____	147 Crystal 8 oz. Marmalade, Dorothy Thorpe Sand Carving with Satin Lid, signed DTC. (Dorothy Thorpe Co.) Unusual
71	_____	3400/1180 Ebony 5¼" 2 handle Bonbon, Sterling Polo Scene, Signed
72	_____	3105 Royal Blue Pressed Rose Point Cocktail
73	_____	3105 Royal Blue Pressed Rose Point Champagne/Sherbet
74	_____	Original Miniature sample Clay Pot Furnace Interior, Cambridge Label "Clay Pot"
75	_____	Original 1949 Catalog, complete except for Corner cut from one page
76	_____	3400/144 Carmen Cigarette Holder with Crystal Ashtray foot
77	_____	1554 Crystal 11½" Cornucopia Centerpiece, Double Candlestick, RARE
78	_____	3778 Crystal Century 1 oz. Cordial
79	_____	3775 Crystal 1 oz. Cordial etched Chantilly
80	_____	427 Crystal Virginian 11" crimped bowl
81	_____	3000 Crystal 7½ " handled basket - cut #2075
82	_____	1121 Light Emerald Ice Pail - etched #523 Chrysanthemum
83	_____	1121 Light Emerald Ice Pail - etched #710
84	_____	836 Early Dk Green 9" x 6½" photographers Dev. Tray (hard to find)
85	_____	885 Crystal Male Urinal
86	_____	Rubina Honeycomb 8½" low ftd. Comport, scalloped rim, White Gold Trim, (slight wear)
87	_____	252 Crystal Pristine Sugar & Cream etched Chantilly (sm flake under foot)
88	_____	500/95 Rubina 1 Pound Candy Jar, Honeycomb Optic
89	_____	500/25 Rubina 10" Bowl, Honeycomb Optic
90	_____	39 Helio 11½" Flat Rim Bowl, MOP Décor with Gold Wheat and Trim
91	_____	45 Helio 9½" Compote, MOP Décor with Gold Wheat and Trim
92	_____	3500/45 Ebony 10" ftd. Urn Vase, Gold Encrusted Blossom Time
93	_____	1222 Bluebell Turkey
94	_____	3011/40 Windsor Blue 10" Flower or Fruit Center Flying Lady Bowl
95	_____	522 Peach-blo 2-Bun Geisha, No Base (2 chips on figure)
96	_____	646 Royal Blue 5" Candlestick, Pair D/1036, Gold Encrusted Apple Blossom II Design
97	_____	1316 Crystal 7" (1 Pound) Rabbit Box and Cover
98	_____	3500/154 Crystal 3-holder Candlestick, Etched Elaine, single
99	_____	3900/67 Crystal 5" Candlestick, Pair, E Candlelight
100	_____	Turquoise/Opal Queen 2 Bottle Caster Set (Castor and 1 Shaker Turquoise, 1 Shaker Opal)
101	_____	Turquoise Childs Punch Bowl, Little Red Riding Hood
102	_____	106 Crystal Jug with lid, etched Marjorie
103	_____	638 Willow Blue Decagon 6" 3-lite Candelabrum (1)
104	_____	34 Jade 10" Rolled Edge Bowl, E705 Enamel Decoration, Gold Trim, RARE
105	_____	168 Ivory 10" Center Handled Tray, Gold Trim and Enamel Etch #705, RARE

106	_____	94 Helio 7" x 8" Sweet Pea Vase, Sterling Cameo Decoration, (slight wear)
107	_____	2780 Carnival Nearcut Strawberry 4" Nappy, Signed, (pit in bottom from stone in glass)
108	_____	384 & 500 Clear 3 pc console set with acid and cut decoration
109	_____	Royal Blue Portiere – Royal Blue and Emerald Green (2 rings missing) 36"
110	_____	1300 Crown Tuscan Vase with D-1007-8 Gold Silk Screen Lace pattern (Pair) acid etch signature
111	_____	Experimental 9.5" Bowl experimental brown/amber color
112	_____	673 Light Emerald 15" Flip Bowl with Enamel Flowers
113	_____	531 Light Emerald 7.25" Tall Comport etched #758 Chintz #1
114	_____	Ivory 8.75 " Shallow Bowl, Encrusted Daisy/Black/Iridized
115	_____	3500/25 Forest Green 9" Ram's Head bowl
116	_____	989 Crystal 10.5" Flop Bowl with Green Enamel Willow
117	_____	Primrose 3 part Handled Relish, Gold Trim
118	_____	2651 Marigold Carnival Feather Nearcut Sundae
119	_____	1402 Crystal 13" Tally-Ho ftd. Punch Bowl and 10 cups (Set)
120	_____	1441 Crystal 9½" 2-Lite Candelabra with Boboches & Prisms, (One bobèche chipped)
121	_____	3011 Amber 3 oz. Statuesque Cocktail
122	_____	3400/1685 Ebony 10" 2 handled Bowl, Silver Encrusted Apple Blossom, signed
123	_____	440 Crystal Pristine 10" Star Bowl
124	_____	1239 Royal Blue 14" Keyhole Vase (crystal foot)
125	_____	Light Emerald 5" Bird on Stump Flower Frog
126	_____	157 Mulberry 7 oz. Ftd Marmalade w. Cover (Lid is Mulberry)
127	_____	3051 Peach-Blo 10 oz. Narrow Optic Tumbler w. Cleo Etching (3)
128	_____	646 Crystal 5" 1-Light Keyhole Candlesticks w. Candlelight Etching - (Pair)
129	_____	3797/492 Crystal 1¾" Candlestick
130	_____	70 LaRosa Alpine Caprice 7" candlesticks (pair) one slightly darker with a small nick on the rim scallop.
131	_____	3011/25 Amber Statuesque Ivy Ball, Optic
132	_____	3011 Carmen Statuesque Cigarette Box and Cover
133	_____	109 Light Emerald 39 oz. Jug etched Cleo
134	_____	3400/58 Willow Blue 13½" Platter etched Gloria
135	_____	91 Ivory 10" Vase with Enamel Floral decoration
136	_____	813 Willow Blue Sugar Shaker with 733 etch
137	_____	1312 Heatherbloom Cigarette Box & Cover, 3½" with Crystal stem/ft. etched Diane
138	_____	3500/25 Moonlight Blue Rams Head Bowl etched Valencia
139	_____	3077 Light Emerald 9 oz. Goblet with Hunt Scene Etch (7)
140	_____	639 Pomona Green 4½" Candlesticks
141	_____	700 or 701 Amber Wreath Place Card with Gold Band Overlay
142	_____	99 Crystal Chelsea Lemonade Bowl, Cut 4061 and #98 Chelsea ftd. Punch Cup (2 pieces)
143	_____	3797/151 Ebon 3½" Ashtrays, Gold Birds (2) (chip on one)
144	_____	SS32 Windsor Blue 2¾" 3 toed Ashtray
145	_____	2581 Light Emerald 8½" Stand Lamp, Electric
146	_____	3077 Blue II 1 oz. Cordial
147	_____	3121 Crystal 1 oz. Cordial, cut Achilles
148	_____	7801 Crystal Hollow Stem Champagne etched Chantilly
149	_____	1128 Wax Test for Scottie Bookend, Original
150	_____	1040 Crown Tuscan 3" Swan, Type 3, Charleton Gardenia Enamel and Gold
151	_____	Rubina 10½" Block Optic Vase, (Lots of Blue)
152	_____	1015 Light Emerald Cambridge Pyramid Advertising Sign, Gold Encrusted
153	_____	1015 Cambridge Pyramid Advertising Sign, Metal (after market)
154	_____	Crystal Individual Sugar and Creamer, Etched Chantilly, Sterling feet (pair)
155	_____	3500/97 Crystal 14" Relish, Cut Adonis
156	_____	3400/103 Crown Tuscan 6½" Globe Vase, Gold Encrusted Portia, Acid Signature
157	_____	2 Carmen Mt. Vernon 6½ oz. Tall Sherbet
158	_____	1402/51 Experimental Blue Handled Cocktail Shaker (no top)
159	_____	315 Crystal 28 oz. Decanter etched #760 Rose Chintz, blown stopper

160	_____	45 Crystal 52 oz. Seashell Jug
161	_____	3500/42 Crown Tuscan 12" Covered Urn Gold Encrusted D995 Chintz #2
162	_____	1242 Crystal 11" Vase etched Apple Blossom
163	_____	Crown Tuscan Boudoir Lamp Gold Encrusted Diane
164	_____	3011/7 Royal Blue 4½ oz. Claret (crystal stem and foot)
165	_____	1937 Crystal 1 oz. Cordial, Low Stem
166	_____	509 Crystal 2-Kid Flower Holder
167	_____	1066 Forest Green 11 oz. Goblet Etched Gloria
168	_____	1043 Dark Emerald 8½" Swan, Type 3
169	_____	1299 Crown Tuscan 11" Vase, Gold Encrusted Portia Etch
170	_____	3011/9 Odd Green 3 oz. Cocktail, Crystal Statuesque Stem/Foot
171	_____	3011/2 Amber 11 oz. Table Goblet, Crystal Statuesque Stem/Foot
172	_____	1402/37 Crystal Tally-Ho 2½ oz. Handled Tumbler. Etched Grape
173	_____	3011 Forest Green 7" Flared Comport
174	_____	64 Crystal Mt Vernon Cigarette Holder
175	_____	1617 Crystal Rose Point Hurricane Lamps (Pair)
176	_____	1309 Crown Tuscan 5" Globe Vase, Gold Encrusted Rose Point
177	_____	1402/52 Crystal Rose Point Tally-Ho Ice Pail
178	_____	P306 Crystal Rose Point 6" Candy Box and Cover
179	_____	151 Crystal Rose Point 3 oz. Mustard and Cover
180	_____	3130 Crystal Rose Point Goblet, unusual stem
181	_____	3105 Carmen Pressed Rose Point Wine
182	_____	3105 Carmen Pressed Rose Point 5 oz. Tumbler
183	_____	3104 Carmen 3½ oz. Tall Cocktail
184	_____	Original Picture of A. J. Bennett in Original Folio
185	_____	3105 Green Pressed Rose Point Wine
186	_____	3500 Carmen 10 oz. Goblet long bowl, GE Rose Point, RARE
187	_____	3500 Carmen 7 oz. Tall Sherbet, GE Rose Point, RARE
188	_____	3500 Carmen 7 oz. Low Sherbet, GE Rose Point, RARE
189	_____	3500 Carmen 3 oz. Cocktail, GE Rose Point, RARE
190	_____	3011/13 Heatherbloom 1 oz. Statuesque Brandy
191	_____	274 Ebony 10" Bud Vase, GE Rose Point
192	_____	3400/45 Ebony 11" 4-toed Fancy Edge Bowl, D/1041 Gold Encrusted Rose Point, very minor rim wear
193	_____	693/3000 Crystal 2 pc. Canapé Set etched Rose Point with Sterling Silver Rim (hard to find)
194	_____	1402/28 Crystal Tally-Ho 18" Sunday Nite Supper Plate etched Rose Point, RARE
195	_____	3400/193 Crystal 6 oz. Oil w. Rose Point Etching (crystal stopper)
196	_____	3400/3900 Crystal 13 oz. Tumblers etched Rose Point (2) (1 optic)
197	_____	3121 Crystal Rose Point Cordials (4)
198	_____	3121 Crystal 3 oz. Cocktail etched Rose Point (4)
199	_____	3400/202 Crystal 6" Bon-bon etched Portia (Scratched)
200	_____	3400/1186 Crystal 12½" 2 handled Sandwich Plate etched Rose Point (Scratched)
201	_____	P55 Crystal 6" 2 handled Ftd. Basket etched Rose Point
202	_____	3121 Crystal Bell etched Rose Point
203	_____	3900 Crystal Salad Plates etched Rose Point (3)
204	_____	3121 Crystal 5 oz. Juice Tumblers etched Rose Point (3)
205	_____	647 Crown Tuscan Pr. Rose point gold encrusted candlesticks
206	_____	Topaz 8 oz. small Dog Bottle
207	_____	3500/109 Crystal Rams Head 11" 4 toed Oval Bowl etched Valencia
208	_____	805 Topaz Syrup with lid and liner, set
209	_____	Logo Signs, Black & Gold Cardboard and Wood (2)
210	_____	1015 Amber Cambridge Glass Prism Advertising Sign, Gold Encrusted
211	_____	3450 Royal Blue Nautilus Perfume, (Stopper not Cambridge)
212	_____	319 Various 9 oz. Georgian Tumblers (3) Moonlight Blue, Pistachio and Mandarin Gold
213	_____	103 Crystal Guest Nite Set, etched Wildflower, (jug handle damaged, tumbler not etched)

- 214 _____ 1042 Light Emerald 6½” Swan, Type I (Signed)
- 215 _____ 3400/2 Crystal Console Set, 12½” Console Bowl, 3400/646 1-lite Candlesticks with Cambridge Engraving (551), signed
- 216 _____ 3500/51 Crystal 5” Handled Basket etched Portia (Version 2)
- 217 _____ 660 Peach-Blo 7” x 11¼” Vanity Tray
- 218 _____ 507 Amber Urn Jar, #725 Etching
- 219 _____ 3400/152 Forest Green 76 oz. Doulton Jug, (Satin Interior-Jade) and 6 matching Tumblers (Set)
- 220 _____ 1305 Carmen 10” Keyhole Vase
- 221 _____ 432 Jade 8½” Ram’s Head Bowl
- 222 _____ 517 Carrara 10” 2 pc. Cheese and Crackers Gold Encrusted 527 Rose, (Set) (Trim Wear)
- 223 _____ 828 Emerald Green 4½ oz. Hot whiskey
- 224 _____ 1041.5 Emerald Green 12 oz. Weiss Beer
- 225 _____ 103 Crystal 38 oz. Guest Room Jug and Tumbler - etched Martha
- 226 _____ 46 Crown Tuscan 7½” Seashell flower holder - Charleton Rose (some gold wear)
- 227 _____ 862 Dk Emerald Green 8”, 4 compartment relish
- 228 _____ 513 Ivory 13” Draped Lady Large Figure Flower Holder on Early Scalloped base
- 229 _____ 3011 Royal Blue 9” Statuesque Candlesticks (pair)
- 230 _____ 3011/9 Moonlight Blue 3 oz. Frosted Statuesque Cocktail
- 231 _____ Crystal Old Home Week Paperweight (chip on base, tinge of sun color)
- 232 _____ Crystal Oblong Paperweight with factory molded design, Satin finish
- 233 _____ 5566 Crystal Farber Ware Nude Comport, Cambridge glass insert, etched Chantilly, (chips on top rim)
- 234 _____ 3400/156 Crystal 8-piece Liquor Set, Sheffield Sterling Silver Decanter Base, E772 Chantilly (Crystal) Decanter Insert 3400/156 - Decanter, 3500/112 - Tray, 1327 - 1 oz. cordials
- 235 _____ 1066 Crystal Oval cigarette holder w/ashtray foot, Manor cutting
- 236 _____ 1066 Amber Oval Cigarette Holder, Crystal ashtray foot, (top edge ground)
- 237 _____ 1327 Crystal 1 oz. Cordial etched Chantilly and Amethyst 1 oz. Cordial (lot)
- 238 _____ 53 Moonlight Blue Caprice 10½” 4 fld. Crimped Bowl
- 239 _____ 136 Moonlight Blue Caprice 7” Tall Comport, Alpine Finish
- 240 _____ 47 Amber 6¾” Comport, Willow Scene Etch, White Fill
- 241 _____ 797 Crystal 7” Flip Vase, Etched Wildflower, Gold Trim
- 242 _____ 2780 Carnival Marigold Nearcut Strawberry Tumbler, Signed, (bruise on foot)
- 243 _____ 3400/1240 Amber 12” 4 toed Bowl, Gold Encrusted Wildflower (some gold wear)
- 244 _____ 119 Crystal Basket etched Wildflower 7” d, 5” tall, 10” overall
- 245 _____ 971 Willow Blue 8½” Bowl, Gold Encrusted E738, gold rim, signed (some Gold wear)
- 246 _____ 1402/29 Crystal 17½” Cabaret Plate rolled edge etched Wildflower
- 247 _____ 431 Crystal 13” Low Bowl etched Firenze (rim flake) Hard to find
- 248 _____ P383 Crystal 8½” Footed Bowl, Pristine, etched Firenze, Very Unusual
- 249 _____ 956 Ebony 64 Oz. Pitcher with Heavy Gold Etch (unknown)
- 250 _____ 2 Primrose 9.25” Bowl with Black/Gold Decoration
- 251 _____ 1084 Ebony 13” 2 Handled Tray Silver Etched Gloria
- 252 _____ Turquoise Queen 2 Bottle Caster Set (Castor and 2 Shakers)
- 253 _____ 3400 Light Emerald 3” nut cup etched Gloria
- 254 _____ 3126 Gold Krystol 2 ½ oz. wine etched Portia
- 255 _____ 3011/9 Royal Blue Statuesque Cocktail with Crown Tuscan stem, Hard to Find
- 256 _____ 94½ Rubina 4½” x 6¼” Sweet Pea Vase
- 257 _____ 1542 Red Stain Life Saver Decanter
- 258 _____ 607 Ebony Cigarette Box with Intaglio Dog
- 259 _____ 402 Amber 12” Vase Etched 717
- 260 _____ 1313 Royal Blue 6” Ash Tray, crystal keyhole foot
- 261 _____ 3600/101 Crystal Cup and Saucer etched Blossom Time (2 sets)
- 262 _____ 647 Ebony 2 lite candlestick, version 2, E739, (pair)
- 263 _____ 94 Amber Sweet Pea Vase etched Rosalie
- 264 _____ 3120 Crystal 3 oz. Cocktail, Engraved #851, Berkeley with Rock Crystal label (2)
- 265 _____ Emerald Nearcut Toy Mug, Gold trim, engraved Ollie 1912, signed
- 266 _____ 1159 Light Emerald Ice Cream Trays (Lite Emerald and Peach-Blo) (2) CHOICE

267	_____	3500/108 Ebony 2½” Candlesticks, gold striped (Pair)
268	_____	40 Ebony 10” Flat Rim Bowl, Hold Wheat & Mother of Pearl Decor
269	_____	389 Amber 7 part Relish, Gold Encrusted Centennial Lodge 1926
270	_____	385 Crystal Handled Syrup Etched Cleo with Metal Lid
271	_____	163 Forest Green 8½” Asparagus Plate
272	_____	3200 Crystal 9” Square Vase - Wild Rose (not cut)
273	_____	1327 Various 3 - 1 oz. Favor Vases (3) Forest Green, Amethyst and Amber
274	_____	198 Willow Blue Perfume w. Dauber - (Unusual Version - Cork stopper still present)
275	_____	3795 Crystal 10 oz. Heart Stemmed Goblet
276	_____	84 Amber 12” Vase etched 724 Betty
277	_____	3400/38 Crystal 12 oz. Tumblers, etched Wildflower, (6), little roughness on 1 rim
278	_____	3400/38 Royal Blue 12 oz. Tumblers (6)
279	_____	3103 Carmen 1 oz. Brandy, Crystal Stem/Foot
280	_____	1402/100 Crystal Tally-Ho 1 oz. Cordial, Etched Elaine
281	_____	3121 Gold Krystol 1 oz. Brandy, Crystal Stem/Foot
282	_____	3135 Gold Krystol 1 oz. Cordial, Etched Apple Blossom, Crystal Stem/Foot
283	_____	7966 Crystal 1 oz. Cordial. Etched Diane
284	_____	7966 Crystal 1 oz. Cordial, Forest Green Foot
285	_____	3130 Amber 1 oz. Cordial, Etched Portia
286	_____	3675 Crystal 1 oz. Cordial, Etched Blossomtime
287	_____	3035 Crystal 1 oz. Cordial, Etched Elaine
288	_____	3500 Crystal 1 oz. Cordial, Etched Valencia
289	_____	3077 Peach-Blo 1 oz. Cordial, Etched Hunt Scene
290	_____	3077 Willow Blue 1 oz. Cordial, Etched Cleo
291	_____	1401 Crystal Martha Washington 1 oz. Cordial
292	_____	3115 Dianthus Pink 3½ oz. Cocktail with Eleanor blue stem Etched Rosalie
293	_____	1040 Peach-Blo 3” Swan, Style 2, signed
294	_____	3400/70 Gold Krystol 3½” Cranberry, Etched Apple Blossom
295	_____	66 Mandarin Gold Caprice 13” ftd. Crimped Bowl
296	_____	SS44 Windsor Blue Seashell 6” flower center
297	_____	3400/68 Experimental Orange Opaque Cream & Sugar, signed (annealing line in sugar, chip on cream spout)
298	_____	3104 Gold Krystol 5 oz. Tall Hoch with crystal Stem/Foot
299	_____	3400/78 Amber Cocktail Shaker and Crystal Stopper with opening for pouring etched Apple Blossom
300	_____	SS11 Crown Tuscan 7” Comport with Rockwell Sterling Silver Seahorse decoration
301	_____	23 Crystal Everglade 5” Vase, Satin Finish
302	_____	1402/100 Crystal Tally-Ho 1 oz. Cordial, tall stem
303	_____	13 Crystal Bird, hollow bottom
304	_____	1015 Moonlight Blue Cambridge Glass Prism Advertising Sign
305	_____	Azurite 58” Whimsy Glass Chain 3 partial chains, Azurite, Ebony, Crystal (Hung in Judy Bennett’s Shop Window)
306	_____	1402/116 Royal Blue Tally-Ho Salt & Pepper (Metal Tops not original)
307	_____	Crystal 8” Bent Glass Tray Gold Encrusted Daffodil, RARE
308	_____	477 Crystal 9½” Corn Dish (Martha Blank)
309	_____	3500/111 Crystal 6” Tall Comport etched Minerva (Unusual Shape)
310	_____	3900/114 Crystal 32 oz. Martini Jug etched Chantilly with Wallace Sterling foot (Handle Cracked)
311	_____	3400/74 Crystal 5” 4 ftd. Comport, Engraving #541, signed
312	_____	597 Peach-Blo Decagon 8½” Salad Plates (4) 6” Bread Plates (3) etched Rosalie, signed
313	_____	3300 Smoke Moderne 10” Plate
314	_____	92 Mulberry ½ Pound Candy and Cover
315	_____	225 Helio 9½” Ball Stem Candlesticks (2)
316	_____	168 Pomona Green 10” Center Handled Sandwich Tray
317	_____	636 Golden Rod Candlesticks (pair)
318	_____	1387/23 Crystal 14 oz. Decanter, Amber Handle and Base (original label, handle crack)
319	_____	163 Crystal 8½” Asparagus plate
320	_____	1542 Crystal Life saver decanter - Charleton Rose (some gold wear)

321	_____	1124 Crystal Frosted Pouter Pigeon Bookend (1)
322	_____	3400/1 Moonlight Blue 13" bowl - etched 744 Apple Blossom
323	_____	3500/17 Crystal 12" bowl - etched 761 Valencia
324	_____	993 Crystal 12½" bowl etched 756 Blackberry
325	_____	Crystal Oval Cambridge Dealer Shelf Sign
326	_____	556 Crystal 8" Plate, etched 715 Willow, Blue Enamel fill w/gold trim (gold loss, scratched)
327	_____	5 1/2" wide and 3 1/2" tall, Gold and Black oval, Scalloped Wood Shelf Sign & Stand, (aftermarket)
328	_____	3400/9 Royal Blue 7" Candy Box and Cover, Gold Encrusted Chintz
329	_____	523 Ritz Blue (Bluebell?) One Bun Geisha Figure (bubble pop)
330	_____	511 Crystal Pair Flat Top Tombstone Bookends, Gold Etched Knight/Horseback (Gold Wear)
331	_____	1321 Crystal 32 oz. Decanter & Stopper, C500 Windsor
332	_____	3400/647 Heatherbloom Keyhole 2-lite candlestick etched Gloria (Possible sun colored)
333	_____	3130 Gold Krystol 8 oz. goblet, gold encrusted Gloria, gold edged
334	_____	3400/68 Heatherbloom Creamer & Sugar
335	_____	3400/52 Crystal 5.5" Covered Butter w. RC Harvest
336	_____	3725 Crystal 1 oz. Cordial Etched Wildflower
337	_____	119 Carmen 7" Basket w. Carmen Handle
338	_____	513 Crystal 12½" Draped Lady Flower Holder (Style 2 Base)
339	_____	1066 Carmen 7" Ivy Ball (Crystal Stem and Foot)
340	_____	3900/72 Crystal Candlesticks w. RC Laurel Wreath
341	_____	3400/38 Royal Blue 80 oz. Jug with Ice Lip, Crystal Handle, (mould roughness on side)
342	_____	300 Moonlight Blue Caprice 6 oz. Tall Sherbet (4)
343	_____	1402/125 Royal Blue Tally Ho 13½" Plate, Rolled Edge
344	_____	3011/9 Crystal 3 oz. Statuesque Cocktail
345	_____	3011/9 Forest Green 3 oz. Cocktail, Crystal Statuesque Stem/Foot
346	_____	3011/9 Royal Blue 3 oz. Cocktail, Crystal Statuesque Stem/Foot
347	_____	3011/9 Gold Krystol 3 oz. Cocktail, Crown Tuscan Statuesque Stem/Foot
348	_____	3011/9 Amethyst 3 oz. Cocktail, Crystal Statuesque Stem/Foot
349	_____	3011/7 Crystal 4½ oz. Statuesque Claret, Optic
350	_____	1212 Crystal 11 oz. Bitters Bottle with Chrome Tube etched Diane
351	_____	647 Heatherbloom Decagon 6" two-lite Candlestick (pair)
352	_____	1042 Carmen 6½" Swan Type 3
353	_____	834 Peach-Blo 5 pc. Condiment Set, Tray, 2 - 3½" Shakers and covered Mustard and Horseradish
354	_____	693/3000 Crystal 2 pc. Canapé Set, etched Hunt Scene (3 sets)
355	_____	994 Ivory 11½" Bowl, enameled Iris decor, Black enamel trim, (Large rim chip)
356	_____	507 Peach-Blo Ginger Jar with 703 Florentine border etch (no lid)
357	_____	94 Night Blue (Old Cobalt) 7 x 8¼" Sweet Pea Vase, wide optic
358	_____	Crystal Boston 8 oz. Cooking Cup and Wenzel Egg Separator Top, (chips on cup base and rim nicks)
359	_____	3011 Amethyst Statuesque Ash Tray
360	_____	3400/168 Experimental Sugar, Milk Glass, RARE
361	_____	3011/13 Dark Emerald 1 oz. Statuesque Brandy
362	_____	Bluebell Cat Bottle with original Tumbler, 22 oz.
363	_____	3900/35 Crystal 13½" 2 handled Cake Plate etched Portia (Scratched)
364	_____	3600/674 Crystal Martha Ice Pail w/chrome handle, etched Blossomtime
365	_____	647 Crystal 2-Lite Candlestick etched Wildflower (Pair)
366	_____	3779 Crystal 1 oz. Cordial etched Daffodil
367	_____	3500/110 Crown Tuscan 13" ftd. sandwich plate etched 752 Diane - gold fill (light gold loss on rim)
368	_____	3900/166 Crystal 14" rolled edge plate etched 722 Chantilly
369	_____	3400/10 Amber 11" center handled sandwich tray etched 754 Portia
370	_____	957 Crystal Ice pail etched Candlelight
371	_____	3400/6 Gold Krystol 11½ " Cheese and cracker, etched 744 Apple Blossom (Gold trim on Comport)
372	_____	3600/158 Forest Green Artichoke plate
373	_____	3600/497 Crystal 1 lite Candlesticks, etched Portia, (Pair)
374	_____	1044 Peach-Blo 10" Swan (Type 1)

375	_____	3400/91 Crystal 3 Compartment Relish w. Candlelight Etching
376	_____	646 Gold Krystol 5" 1-Light Keyhole Candlestick w. Wildflower Etching (Single)
377	_____	2651 Crystal Near Cut Feather Banana Stand
378	_____	2651 Crystal 8" Near Cut Feather Banquet Bowl
379	_____	3400/46 Amethyst 12 oz. Cabinet Flask
380	_____	Crystal Cambridge Glass Factory Paperweight, (Lavender tinge)
381	_____	Crystal Cambridge Glass Oval Display Sign
382	_____	Royal Blue Cambridge Glass (NCC) Oval Display Sign
383	_____	2780 Green Carnival Strawberry 7" Nappy, Signed Near Cut
384	_____	300 LaRosa Caprice Ftd. Juice
385	_____	3011/13 Pistachio 1 oz. Statuesque Brandy
386	_____	2760 Crystal Tall Quart tankard with pressed handle
387	_____	3500/57 Crystal 8", 3 compartment with lid etched Chantilly
388	_____	7606 Crystal 12 oz. handled tumbler etched Marjorie (2)
389	_____	Experimental Everglade nappy, Pink Opalescent, Made from 27 sugar, RARE
390	_____	3400/4 Amber 12" 4 Ftd. Bowl, Gold Silk Screen Apple Blossom, Unusual
391	_____	532 Ebony 6" x 7" Compote, Gold Encrusted Blossomtime
392	_____	3900/136 Crystal 5½" Comport w. RC Adonis
393	_____	3450 Royal Blue Nautilus Creamer and Sugar
394	_____	3011/3 Heatherbloom 7 oz. Champagne w. Crystal Stem & Foot
395	_____	300 Pistachio 1 oz. Caprice Cordial w. Crystal Foot
396	_____	7606 Crystal 1 oz. Pousse Cafe w. Marjorie Etching
397	_____	Roll of Paper Price Tags, "Made in USA"-The Cambridge Glass Co"
398	_____	12 Heatherbloom Mt. Vernon 4½" Footed Rose Bowl or Ivy Bowl
399	_____	Amber 3-part Covered Candy with Gold Encrusted Hunt Scene Etch (some gold wear on handle)
400	_____	2660 Crystal 7 piece Toy Punch Set, Wheat Sheath
401	_____	2660 Crystal Wheat Sheaf Toy 5-pc Berry Set
402	_____	2630 Crystal Colonial Toy Creamer, Covered Butter & Spooner
403	_____	2635 Crystal Fernland Toy Covered Sugar, Covered Butter, Spooner & Creamer
404	_____	320 Crystal 7 oz. Old Fashioned Cocktail, D/985 Three Canny Scots
405	_____	508 Peach-Blo 9½" Mandolin Lady Flower Frog
406	_____	246 Crystal 11" Martha Celery Tray etched Chantilly
407	_____	3450 Amber Nautilus 2 Pc. Salt & Pepper (Set)
408	_____	200/16 Topaz 6" Candlesticks (pair)
409	_____	1041 Peach-Blo 4½" Swan, Type 1, signed
410	_____	3134 Crystal 2½ oz. Cocktail w. RC Broadmoor (pair)
411	_____	3400/106 Crystal Marmalade & Cover w. Lorna Etching
412	_____	1625 Crystal Cigarette Lighter
413	_____	3500 Crystal 1 oz. Cordial w. RC Croesus
414	_____	3400 Crystal 7½" Salad Plate w. Candlelight Etching (4 - 3400 & 1 - 3900)
415	_____	603 Peach-Blo 4" Coasters (8)
416	_____	84 Various Mt. Vernon 14 oz. Steins (6), 2 Crystal, 2 Carmen and 2 Royal Blue
417	_____	1 Crystal 4" Muddlers (6)
418	_____	3400/116 Royal Blue 14 oz. Mugs (3), and 14 oz, 3400/107 Mug (1)
419	_____	9 Crystal 12 oz. Arcadia Ice Tea (5)
420	_____	3600/1 Crystal 5½" Blown Compote etched Chantilly
421	_____	437 Ivory 9" Candlesticks (2) with No. 45 - 9½" Diameter Low Footed Comport, Rolled Edge
422	_____	3797 Crystal Cambridge Square Sherbets (6)
423	_____	3797/17 Crystal Cambridge Square Coffee Cups and Saucers (6)
424	_____	3797 Crystal Cambridge Square Cordials (6)

European Influence on the Everglade Line

by David Ray

During his convention keynote presentation in 2014, Randy Coe focused his discussion on the impact of European glass designs on American glass manufactures. In 1925 glass manufacturers from around the world were invited to an international glass symposium in Paris, France. Randy noted that the Consolidated Glass Company as greatly influenced the designs of Rene Lalique, but all American glass manufactures were influenced by the famous glass designers in Europe.

The leaves and flowers are highlighted with two shades of heavy gold. The base of the vase, which is ground and polished, possesses the Mont Joye stamp. It is clear the Cambridge Glass Company appreciated the glass designs being produced in Europe and incorporated those influences within the Everglade line.



Some believe the Cambridge Everglade line was inspired by glassware designs being produced by major European glass manufactures. One of these European companies was Mont Joye Glass Company. Mont Joye operated in France during the late 1800's and

early 1900's producing decorative enameled glassware and a less expensive version of cameo style glassware which was very popular in Europe.

Several years ago, Cambridge collectors found identical versions of the #23 5" Everglade vase marked "France". Recently, I purchased this green vase that is nearly identical in design to the 6" #109 Everglade vase. The vase is acid etched to accentuate the relief of the floral design offering a 3-dimensional cameo style appearance.



Green vase with the Mont Joye stamp

#109 Everglade vase



This report is provided to keep members up with what's happening on the world's largest Internet Auction site, and focuses on Cambridge glass items that are seldom or rarely seen. Please note we cannot guarantee the accuracy of listings herein.

Welcome to the eBay Report. This column features Cambridge glass items that sold on eBay circa November to mid-December, 2017. Selling prices are rounded to the nearest dollar. If no color is mentioned, assume that the piece or part of it being discussed is crystal. Here we go:

Statuesque (Nude Stem) Line



A claret with optic bowl sold for a mere \$25. However, one with Royal Blue bowl (no optic, of course) sold for \$106.



An ivy ball with Royal Blue top sold for the opening bid of \$95. Prices for this once ah-hinspiring piece have really taken a dive.

A seashell-top comport in late (dark) Emerald sold for \$101. A true cordial (cupped bowl) with Carmen bowl sold for \$218. A single candleholder in Windsor Blue sold for \$249. I hope this completes the buyer's pair.

Animals and Figural items

A Bridge Hound in Amethyst sold for \$13. Who says Cambridge glass has to be expensive?



A Rose Lady flower arranger in satinized Peach Blo sold for \$94 on a Buy It Now. While not as large as some of the figural flower frogs, these show a subtlety of design that is worth a second look.

A pair of 4-1/2 inch swans in Ebony with the rare candle inserts sold for \$185 on a Buy

It Now. I wonder what price these might have garnered, had the seller listed them in auction format? Then again, a pair in Emerald Green sold in early November for \$150, so maybe that's market price. Interestingly, the same seller offered a single swan with the insert, which sold for \$114.



A 13 inch swan in Peach Blo swam away at \$285, a little more than I would have expected.

A large Bashful Charlotte flower arranger in satinized Moonlight Blue sold for \$215.



A Two Kids flower arranger in very scarce Moonlight Blue sold for \$550. (Another one sold back in September for \$490.)

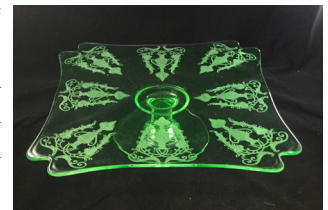
A Swan punch bowl with 8 cups sold for \$825.

Etched Tableware and Stemware

A #922 cream soup (no liner) etched Rose Point sold for \$129.



A gorgeous #707 11 inch low footed cake plate with the #733 etching, dubbed "Deux Coqs" by many collectors, sold for the \$25 opening bid. Given the shape and the most artful placing of 8 repetitions of the etching around the plate, I would have expected it to bring more. Then I noticed the two tiny nicks and the \$36 shipping quote, which probably explains it. Gosh, I could get that from Los Angeles all the way to Maine via Priority Mail for less than that.



December is here, and you know what that means: time to shop for Michael's birthday.

A set of seventeen #3400/62 8-1/2 inch plates in Heatherbloom etched Gloria were offered at \$180 opening bid, or \$250 Buy It Now, but failed to sell. Then the seller relisted them for a \$265 Buy It Now price, and they sold. These are going to look great on my table. Thank you to whomever bought them for me; what a great birthday gift! I will be waiting by my front door for the package to arrive, and I will be sure to send you a thank-you note, too.

A set of 8 #3400/71 4-toed 3 inch individual nut dishes in Heatherbloom etched Gloria sold for \$250. These are going to look great with the plates; I can't wait to receive these, too. My readers are so kind and generous!



A #3400/52 covered butter in Willow Blue etched Apple Blossom sold for \$395, while the #1091 sauce boat and



stand in the same color and pattern brought \$295.



A #3400/38 80 ounce ball jug with four #3400/38 tumblers, etched Minerva, sold for \$482. You won't see many of these floating around out there.



A pair of #1604 2-piece hurricane lamps etched Rose Point sold for \$750, which struck me as high for these.

Gold, Silver, and Enamel Decorations



One of the headscratchers for this month was the #3500/57 3-part covered candy in Crown Tuscan with gold encrusted Wildflower etching. It was described accurately and listed correctly, yet brought only \$38. There

must be hundreds of these in existence with Portia and Rose Point etchings, and some with Diane, too; but I can't remember the last time I saw one in CT with Wildflower. Yet a #278 11 inch vase in Ebony with gold encrusted Wildflower etching brought \$270. Go figure.



A pair of #3500 13 ounce footed tumblers with Royal Blue



bowls and #1037 gold decoration sold for \$126. The same seller then offered another set, this time four, which sold for \$250 – almost exactly the same per-stem price as the others.



A #206 cologne in Helio with #528 Egypt band decoration in gold sold for \$129. The shank looked ever so slightly long for a cologne, so I have to wonder if it originally had a dauber stopper. If the dauber breaks, the heartbreak can be eased somewhat by having it ground down to a point where it looks like a non-dauber stopper.

A #3122 cocktail with Carmen bowl, etched and gold encrusted Diane, sold for \$295. Aww, man, there was only one?



A #3400/102 5-1/2 inch vase in Carmen with white enamel Japonica (Hawthorne) decoration sold for \$2,038. This, after failing to get the \$1,000 opening bid the first time it was listed by the seller.

Miscellaneous

A Nearcut 2837 pitcher in the Peacock pattern strutted away for the opening bid of \$100. I wish there was more Nearcut for me to report on, but maybe it's being listed under EAPG.



A Cambridge prism style advertising sign in Willow Blue sold for \$100 on a Buy It Now. An Amber one brought a surprising \$149. I'd love to see an article on these, along with a list of colors in which they are known (as well as the author's opinions as to which ones are most difficult to find.)

One of my favorite items to show up during the reporting period was a #414 humidor with stopper in Emerald Green. This showstopper didn't last long at "\$125 or Best Offer."



One seller billed his item as "Cambridge Candelabra the way you want it." This featured the stocky candleholder, a 3-way arm with bobeches and prisms, plus a 3-way arm with peg vases (for versatility), and a peg Blue Jay in the center candle socket. It went for a very reasonable \$149.

A #1 Keg Set with Emerald Green barrel and 6 barrel whiskeys, and Ebony stand and stopper, sold for \$225 on a Buy It Now. The only thing missing was the round tray in Ebony, on which it is all supposed to rest. These aren't super-distinctive, but a Cambridge collector who studies his books will recognize one on eBay, even if the seller doesn't. That's what patience, plus an eBay saved search of "round black glass tray," can achieve.



A #1296 12 inch footed vase with Peach Blo top, etched Gloria, sold for \$290. It had a lovely border etch at the top that incorporated the Gloria flower – something I don't see too often.

A #3400 ball jug in Ebony plus 5 #3400/112 tumblers (the style with the crease or waist about 1/3 of the way down from the rim), all set in Farber Brothers Krome Kraft holders, sold for \$415.



A Springtime #1253 12 inch vase (the one with the tulip design) in crystal satin set in fancy ormolu mounts with a porcelain medallion surprised me by selling for \$595.



That's all for now. If you see any interesting Cambridge glass on eBay that you think I should be watching or reporting on, or if you have any other input, feel free to contact me at LAGlass@pacbell.net. Until next month, happy Cambridge hunting!

Holiday Table Settings



3121 Rose Point stemware highlights this elegant table.



The buffet table is highlighted with candelabrum and serving pieces. Are those swans waiting to eat some pumpkin pie?



What do you do with a punch bowl?
Serve punch of course!



Amber is the color of choice for this Thanksgiving table set for two.



Send in photos of your holiday table setting featuring your Cambridge glass and we'll include them in a future issue.

For Sale - NCC Books and DVD

Published by NCC • Members receive a 10% discount

TITLE		REGULAR PRICE	MEMBER PRICE
1910 NearCut Catalog Reprint	108 pages, paperback, no price guide	\$14.95	\$13.45
1927-29 Catalog Reprint	66 pages, paperback, no price guide, includes identification guide	\$9.95	\$8.95
1930-34 Catalog Reprint	250 pages, paperback with 2000 price guide	\$14.95	\$13.45
1930-34 Catalog Index	Index for above	\$2.00	\$1.80
1949-53 Catalog Reprint	300 pages, paperback, no price guide	\$19.95	\$17.95
Cambridge Colors II (New)	Hardcover with price guide	\$19.95	\$17.95
Cambridge Rose Point – A Collector’s Guide		\$29.99	\$27.00
Caprice	200 pages, paperback, no price guide	\$19.95	\$17.95
Decorates	136 pages, paperback, no price guide	\$14.95	\$13.45
Etchings (2nd Edition)	102 pages, paperback, no price guide	\$17.95	\$16.15
Etchings, Non-Catalogued	70 pages, paperback, no price guide	\$12.95	\$11.65
Etchings: Blossomtime	26 pages, paperback, no price guide	\$7.95	\$7.15
Etchings: Candlelight	30 pages, paperback, no price guide	\$7.95	\$7.15
Etchings: Chantilly	44 pages, paperback, no price guide	\$7.95	\$7.15
Etchings: Diane	53 pages, paperback, no price guide	\$7.95	\$7.15
Etchings: Elaine	64 pages, paperback, no price guide	\$9.95	\$8.95
Etchings: Portia	57 pages, paperback, no price guide	\$7.95	\$7.15
Etchings: Wildflower	42 pages, paperback, no price guide	\$7.95	\$7.15
Rock Crystal Engravings	119 pages, paperback, no price guide	\$17.95	\$16.15
Rock Crystal Engravings (Listings)	Companion to above; lists all pieces in all patterns	\$9.95	\$8.95
Rock Crystal 1940 Illustrated Catalog & Price List		\$14.95	\$13.45
Rose Point - Second Edition	146 pages, paperback, no price guide	\$19.95	\$17.95
Pharmaceutical Catalog No.8 1915-1920 Reprint	68 pages, paperback, no price guide	\$9.95	\$8.95
Cambridge Arms compendium		\$7.95	\$7.95
1916 General Catalogue		\$13.95	\$13.95
Rose Point Program - DVD (Postage \$3.00)		\$19.95	\$17.95
Caprice Program - DVD (Postage \$3.00)		\$19.95	\$17.95

How to Order by Mail or from the NCC Website

Send orders to:
NCC • PO Box 416 • Cambridge, OH 43725

OHIO RESIDENTS PLEASE ADD 7.25% SALES TAX

SHIPPING:
\$5.00 FOR THE FIRST PUBLICATION
\$1.00 FOR EACH ADDITIONAL ITEM

Please include your name, complete mailing address and your phone number or e-mail address.

Payments by check or Money Order only, payable to NCC

Books may also be purchased on the NCC website,
www.cambridgeglass.org.

Major Credit Cards are only accepted for web purchases.



NCC Events

**2018 NCC Auction
Saturday March 3, 2018**

**2018 NCC Convention
June 20-23, 2018**

**2018 Fall Meeting
Saturday, October 20, 2018**

Recent Finds

What you have found lately?

NCC welcomes the
following new members

Carolyn Fields	IL
Chuck Fields	IL
Libby Jordan	MO
Christina Katsikas	NH
Annie Liner	CA
Harold Liner	CA
David McFadden	OH

Member Benefit

Each NCC household is allowed one free 20-word classified ad in the Crystal Ball per calendar year as part of their membership. This can be a "For Sale" or "Wanted" type of classified ad. Submit your ad by email to editor@cambridgeglass.org

January 20-21, 2018

Cartersville Looking Glass Show & Sale
Cartersville Civic Center
Cartersville, GA 30120
<http://meyershows.com/cartersville.php>

Glass Shows

January 27-28, 2018

Sanlando Depression Glass Show & Sale
Sanford Civic Center
Sanford, FL. 32771
<http://sanlandodepressionglassshow.com/>

February 3-4, 2018

South Florida Depression Glass Club presents:
Vintage Glass, Pottery, Dinnerware Show & Sale
Emma Lou Civic Center
Pompano Beach, FL 33060
<http://www.sfdgc.com>

February 10-11, 2018

39th Annual Clearwater Depression Glass Club Show & Sale
6340 126th Ave.
Largo, FL, 33773.
<http://clearwaterdepressionglassclub.org>

February 16-18, 2018

The Houston Glass Show & The Best Little Antique Show in Texas
Fort Bend County Fairgrounds
Rosenberg, TX 77471
<http://www.maxmillerantiques.com>

February 24, 2018

Green River Depression Era Glass Club
41st Annual Green River Glass Show & Sale
525 4th Avenue N
Kent, WA 98032
kayswede@msn.com

March 3, 2018

**Annual All-Cambridge Benefit Auction
Pritchard Laughlin Civic Center
Cambridge, OH 43725**

March 10-11, 2018

20-30-40 Glass Society of Illinois 46th Glass Sale & Show
The Concord Plaza Midwest Conference Center
Northlake, IL 60164
<http://20-30-40glassociety.org>

March 17-18, 2018

Crescent City Depression Glass Society
42nd Annual Antiques and Vintage Collectibles
Pontchartrain Center
Kenner, LA
<http://www.crescentcityglass.org>

DEALER DIRECTORY

Dealer Directory - \$24 for 12-months, size limited by box (see below). Includes listing on NCC website.


Advertising Rates:

1/8 page \$15 1/4 page \$20
1/2 page \$30 Full page \$50

Electronic submissions should be emailed to:

editor@cambridgeglass.org

Use Word. Mailed submissions and all payments should go to PO Box 416, Cambridge, OH 43725. Deadline is 10th of preceding month. Ads must be paid in advance. Show listings are FREE; send info to PO Box or e-mail address 60 days before event.



Connecting Buyers & Sellers!
Tell us what you are looking for and we help find it.
CAMBRIDGE GLASS.US
P. Snyder 740-601-6018
E-Mail and Find Your Glass!
psnyder@cambridgeglass.us
www.cambridgeglass.us

E-Blast
When you are searching for Cambridge glass, email your request and it is emailed to all members and dealers.
P. Snyder, 1500 Edgewood Dr., Circleville, Ohio 43113

PATTON HOUSE ANTIQUES
Specializing in Glass
Heisey • Cambridge • Fostoria • Duncan
Factory Antique Mall
Verona, VA off I-81. Exit 227
The Daniels, Box 547 Louisa, VA 23093
(540) 967-1181

Cheshire Cat Antiques
Specializing in elegant depression to mid-century era glass and vintage kitchen glass.
Francee Boches > 305-884-0335
fboches@cheshirecatantiques.com



Pull up a Mouse!
Shop 24 hrs a day at
cheshirecatantiques.com

Cherished Collectibles
Shopping 24 hours in our online store
Glassware, Figurines, Collectors' Plates
www.cherishedcollectibles.com
Elegant and Depression Era Glass

Heirloom Glass Antiques & Gifts
Large Selection Of Cambridge
13411 Columbia Hwy.
Lynnville, TN 38472
www.heirloomglass.net 931-446-5492
juanita@heirloomglass.net

Edward Sawicki
Memories Antiques
"Glass is our Passion"
Candlesticks and stemware our Specialty."
PO Box 153 646-522-1506
Dunnellen, NJ 08812 ejsawicki@optonline.net

CRYSTAL LADY
1817 Vinton St. Omaha, NE 68108
Bill, Joann and Marcie Hagerty
402-699-0422
Specializing in Elegant Glass & Collectibles
www.crystalladyantiques.com

Glen & Carolyn Robinson
White Rose Antiques
Specializing in Depression Era Glassware
2454 McFarland Road
York, SC 29745
803-684-5685
gandcrobinson@aol.com
whiteroseglassware.com

CRYSTALLINE COLORS
Cambridge • Fostoria • Elegant Glass
Penny Court Mall, Cambridge - 2 booths
Medina Antique Mall
Medina, OH (I-71, exit 218)
Lynne R. Franks 216-661-7382

GLASS FROM THE PAST
Maureen Gillis

www.glassfromthepast1.com
email: maureen@glassfromthepast1.com

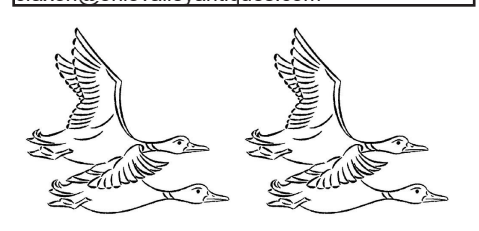
Be sure to tell dealers that you saw their ad here.

TWEAK COLLECTIBLES
Specializing in Elegant Glass
BUY & SELL
WANTED: CAMBRIDGE TURKEYS
417-742-3653
btummons@aol.com

Virtualattic At The Glass Chalet
Specializing in
Elegant Depression Era Glass
Sandra L. Bridwell-Walker
PO Box 726
Newcomerstown OH 43832-0726
817-559-0328
virtualattic7@gmail.com theglasschalet@gmail.com

Max Miller
Elegant American Glassware
www.maxmillerantiques.com
The Market Place
10910 Katy Freeway. 713-410-4780
Houston TX 77043 mmxglass@aol.com

Ohio Valley Antique Mall
7285 Dixie Highway (Route 4)
Fairfield, OH 45014
Cincinnati's Largest Multi-Dealer Antique Mall
Hours: DAILY 9:00 a.m. - 9:00 p.m.
513-874-7855
www.ohiovalleyantiquemall.com
cfaxon@ohiovalleyantiques.com



ISAACS ANTIQUES
(740) 826-4015
located in
Penny Court Mall
637 Wheeling Ave
Cambridge, OH

BAKER FAMILY MUSEUM
805 CUMBERLAND ST.
CALDWELL, OHIO 43724
740-732-6410
bakermuseumnellbaker@msn.com
Wed & Thurs 9-4; Fri - Sat 9-5

MARGARET LANE ANTIQUES
2 E. Main St. New Concord, OH 43762
Lynn Welker (740) 826-7414
Cambridge Glass Matching Service
Hours: Mon-Fri 10-12 AM, 1-5 PM
or by appointment

Our House Antiques
Linda and David Adams
Las Vegas, NV
1-800-357-7169
www.OurHouseAntiques.com
email: David@OurHouseAntiques.com




National Cambridge Collectors, Inc.
PO Box 416
Cambridge OH 43725
email: editor@cambridgeglass.org
website: www.cambridgeglass.org



10 oz. 4-piece Game Set in Display Box:
Club and Spade with Ebony base
Heart and Diamond with Carmen base

***The National Museum
of
Cambridge Glass***

***Open April thru October
only***

