



Cambridge Crystal Ball

Published by the National Cambridge Collectors, Inc. as a resource which informs, invites and inspires people to encourage the continued preservation of the glass produced by the Cambridge Glass Company of Cambridge, Ohio for future generations.

Issue No. 507

ISSN 2474-5987

April 2017

Convention 2017 – ANIMAL HOUSE

Wanna Get WILDS???

By Rick Jones

We have a very special opportunity as part of this year's NCC Convention Celebration – ANIMAL HOUSE. Convention attendees will have the opportunity to register for custom tours of the **Columbus Zoo's The Wilds**, located just 21 miles from our National Museum of Cambridge Glass.

A special treat is that the first group tour of The Wilds will be **lead by our very own Friend of Cambridge, Sharon Miller**, who is also an NCC Board Member (and current Secretary). Sharon has been working part-time at The Wilds, which is an over 9,000 acre Conservancy.



The Wilds has a fascinating history. According to Wikipedia, it is now the largest wildlife conservation center in North America.

It is located on land that was formerly used for strip mining. It was mined for coal from the 1940's to the 1980's. As that industry was beginning to wind down, the government passed the Federal Reclamation Act (1971) which required contouring, topsoil and erosion control plantings.

In the late 70's, an idea emerged to convert this property into The Wilds as a private-public partnership involving the Ohio Departments of Natural Resources and Development, the Ohio zoos and the private sector. By 1984, The International Center for the Preservation of Wild Animals, Inc. was formally incorporated as a 501(c)(3) corporation. They were gifted 9,154 acres of

land by the Central Ohio Coal Company, a subsidiary of the American Electric Power Company (ironically, the company we bought our museum building from).

Property development began in earnest. The Visitor Center was completed in 1989, the first perimeter open range fencing installed by 1990 as was an Animal Management Facility and the first animal was released into the wild in 1992. By 1994, The Wilds was ready to open to the public.

The facility received a major boost in 2001 with a legal relationship formed with the Board of The Columbus Zoo, lead by their legendary curator Jack Hanna. In

continued on page 11

What's Inside

Convention2017: Wanna Get WILDS?.....	1
President's Message	3
Journey Through Time at the Museum	4
Crown of the Andes - Update	6
2017 Auction Weekend in Photos.....	8
2017 March Benefit Auction Results	10
Convention 2017 Registration	12
Convention 2017 Schedule of Events.....	14
A Look Back In Time 1936.....	16
eBay Report	18

National Cambridge Collectors, Inc.

PO Box 416 Cambridge, OH 43725-0416

Board of Directors

	2017	
Ken Filippini	Millie Loucks	Freeman Moore
	2018	
Julie Buffenbarger	Doug Ingraham	David Ray
	2019	
Rick Jones	Lindy Thaxton	Lynn Welker
	2020	
Cindy Arent	Larry Everett	Sharon Miller

Officers

President	David Ray
Vice-President	Doug Ingraham
Secretary	Sharon Miller
Treasurer	Millie Loucks
Sergeant-at-Arms	Larry Everett

Director of Strategic Planning	Ken Filippini
Director of Human Resources	David Ray
Chair, Endowment Committee	Doug Ingraham

Member Services

Vice President

Member Relations
Convention
Digital Media
Glass Dash
Glass Show
Study Groups
Webmaster

Rick Jones
Freeman Moore - Membership Database
Rick Jones - Convention Director
Alex Citron - Manager of Facebook Operations
Larry Everett & Frank Wollenhaupt
Sandra Bridwell-Walker
Jeannie Moore - Study Group Coordinator
David Adams

Development

Vice President

Campaigns

Events

Projects
Publicity

Julie Buffenbarger
Ken & Jane Filippini - Annual Fund Directors
Larry Everett - Director of the Heritage Society
Will & Bev Acord - Auction Managers
Lynn Welker - Auction Manager
Carl Beynon - Jeweler & Scotties Project Manager
Jonathan Fuhrman

Education

Vice President

Crystal Ball
Publications
Media Productions
Research
Programming

Larry Everett
Freeman Moore - Executive Editor
Mark Nye - Director of Publications
Dave Rankin - Director of Media Productions
Mark Nye - Archivist
Greg Vass - Director of Programming

Museum

Vice President

Public Operations

Facilities & Grounds
Collections
Merchandise Sales

NCC History
Community Relations

Cindy Arent
Sandra Bridwell-Walker - Docent
Julie Davey - Docent
Sandy Rohrbough - Docent
Betty Sivard - Docent
Gary Wiseman - Docent
Carl Beynon - Director of Facilities
Lynn Welker - Director of Collections
Lynn Welker - Gift Shop Manager
Cindy Arent - Gift Shop Manager
Mark Nye - Archivist
Cindy Arent

Administration

Vice President

Accounting & Finance
Information Technology

Doug Ingraham
Lisa Neilson - Office Manager
(vacant)

ADDRESS CHANGES

Please send address changes to:
Membership - NCC
PO Box 416
Cambridge, OH 43725-0416
or by e-mail to:
membership@cambridgeglass.org



CONTACT US

136 South 9th Street
Phone: 740 432-4245
nccglass@yahoo.com



David Ray, President
e-mail: westervillesh@hotmail.com
Sharon Miller, Secretary
e-mail: secretary@cambridgeglass.org

Heritage Society

Ensuring the preservation mission of the NCC through planned giving and estate bequests.

Members of The Heritage Society are those who have included the NCC in their wills or estate plans, thus providing the organization with a secure future.

The mission of The Heritage Society is to foster smart estate planning and to assure that NCC is not forgotten as an important beneficiary. Any pledge is meaningful and appreciated.

All Cambridge collectors - both current and future - will benefit from, and be grateful for your support.

Let us know how we can help with your future plans.

NCC Website: www.CambridgeGlass.org

Miami Valley Study Group Website: www.mvsg.org



PRESIDENT'S MESSAGE

Museum Opens for 2017

In 2017 the National Museum of Cambridge Glass will celebrate its 15th anniversary at its current location. After purchasing the building in September 2000, committees were formed to determine the necessary improvements required to convert the former AEP office building into a premier glass museum. Although the museum opened for operation on April 3, 2002, the grand opening of the museum was held in June during convention week. Cambridge glass collectors from across the country arrived in Cambridge, Ohio four years after the great flood of 1998 to celebrate the opening of our new museum. Who can forget Shelley Cole singing the National Anthem? There wasn't a dry eye in the house. Since the opening of the museum, the roof has been replaced, multiple heating units have been upgraded, the parking lot has been resurfaced and many smaller maintenance projects have been completed. This winter Cindy Arent started the process of replacing the halogen lighting in the display cases with more energy efficient LED lights. With the help of a successful auction raffle, additional lights will be purchased and installed prior to the museum opening on April 1. The Museum Committee has worked all winter washing the glassware, cleaning the cases, and redesigning some of the glass displays. In addition, a new educational display titled, *Time Travelers*, was created in the Education Center. With the help of our museum docents and volunteers, I expect the National Museum of Cambridge Glass to have another outstanding year.

The theme for this year's Annual Convention is *Animal House*. Educational programs and glass displays will focus on Cambridge glass animals, as well as glass animals produced by other companies. The first educational program offers attendees an interactive tutorial for navigating the Miami Valley website. The website hosts more than twenty-seven thousand images of Cambridge glass and serves as a tremendous educational resource. Read Rick Jones' article for additional details about the 2017 Annual Convention schedule. Registration for convention is now open. Last year NCC implemented an online registration option for members to expedite the registration process and improve communication. I highly recommend anyone

planning to attend convention to take advantage of this fast and easy option for submitting your convention registration.

The March membership meeting was held on Friday, March 4, at the Prichard-Laughlin Civic Center. During the meeting, the membership approved the slate of candidates running for the board of directors in 2017. Current board members whose terms are expiring this year include Ken Filippini, Millie Loucks, and Freeman Moore. The slate of candidates approved by the membership includes Sandy Bridwell-Walker, Ken Filippini, Freeman Moore, Scott Pierce, and Kathie Young. Millie Loucks has faithfully served on the board of directors for the past four years. Three of these years Millie has served as NCC's treasurer. I want to thank Millie for her years of service and unwavering commitment to NCC. Election materials will be included in this year's Annual Fund mailing which is scheduled for April 1. Each board candidate is passionate about serving NCC and would make a great addition to the board of directors. Election results will be announced at the 2017 annual convention. Good luck to each candidate, and thank you for your willingness to serve.

Over 100 enthusiastic Cambridge glass collectors arrived at the Prichard-Laughlin Civic center on Saturday, March 5 for the all-Cambridge glass benefit auction. Collectors were offered a diverse selection of colors, lines, etchings, decorations. There was truly something for each level of collector. The sales for this year's auction totaled \$37,997.50 with NCC receiving \$8,871.50. Some of the auction highlights included a 13" Ebony Swan, a Heatherbloom 3011 nude champagne, a Near Cut Daisy lamp, a crystal 3011 brandy etched Chintz, a 3400 Heatherbloom perfume etched Portia, an Amber eagle flower frog, a Carmen Flying Lady Bowl, a Bluebell 13.5" Draped Lady with bowl and candlesticks, a Pristine blown torte plate etched Rose Point, a hollow stem champagne etched Rose Point, a hollow stem brandy etched Vichy, a Royal Blue 3011 cigarette holder, a Carmen 3011 short-stemmed cigarette box, a crystal 3011 cigarette box etched Diane, and a crystal vase with red enamel trim etched Lorna. I want to thank the Auction Committee, the glass consignors, the absentee bidders, and everyone who attended the auction for making this year's auction successful and enjoyable for all.

David

David Ray
westervillesh@hotmail.com

Journey Through Time at the National Museum of Cambridge Glass

By Cindy Arent

Begin your journey through time at the National Museum of Cambridge Glass

May 22, 1902

EXTRA! EXTRA!

The Cambridge Glass Plant Opens!

One of the Most Complete Plants in the World

~The Daily Jeffersonian~

The National Museum of Cambridge Glass, located in Cambridge, Ohio, provides interactive and educational opportunities for all ages to learn about the history of Cambridge glassware produced by The Cambridge Glass Company from 1902-1958. The museum features over 8,000 pieces of glassware in over 40 colors and hundreds of innovative designs. The museum will open for the new season on April 1 with many new displays and learning opportunities. The 2017 theme for tours will be Time Travelers. This season visitors will hear stories about what life was like for people working at The Cambridge Glass Company many years ago as they tour the museum.

In an article written in *The Daily Jeffersonian* on November 15, 1900, the Cambridge Improvement Company presented its proposal to the people of Cambridge. It stated the following:

“Those who ought to know say this will be four times as big as the Byesville glass works, which has already required the building of one hundred and ten houses there, and that as many more are still needed. We estimate that these works (Cambridge Glass) will require the building of from 500 to 800 houses, and will add from 2500 to 3000 to our population, and will increase our wealth more than \$1,000,000.”

When the famous glass factory opened in May, 1902, it was reported in an article printed in *The Daily Jeffersonian*, May 22, 1902, that “the immense factory built and operating by The Cambridge Glass Co. is one of the most complete plants in the world”. The first piece of Cambridge Glass was made by Hugh McManus and was assisted by his son, Walter McManus. Mr. McManus had moved his family to Cambridge from Finley, Ohio



Rose Ann Davis (left) and Cindy Arent look at a piece of Cambridge Glass in the new Time Travelers display in The Edna McManus Shepard Education Center. Rose Ann’s grandfather, Hugh McManus, made the first piece of Cambridge Glass in May, 1902.

to work at the new glass house.

The National Cambridge Collectors, Inc. was formed as a non-profit organization in 1973 to preserve the history of the Cambridge Glass Company and the glassware it produced. The first museum opened on Route 40 East on June 25, 1982 and an addition was added in 1983. The museum was in operation until it was destroyed by a flood in 1998 that filled the building with 5 ½ feet of water. Members of the organization searched for a new location and opened the current museum on April 1, 2002 at 136 S. 9th Street in downtown Cambridge. This season marks the 31st year that the National Cambridge Collectors, Inc. has operated a museum in Cambridge, Ohio.

The tour at the National Museum of Cambridge Glass begins with a vintage film produced by the Cambridge Glass Company during the 1950s. *The Crystal Lady* shows the actual Cambridge artisans as they demonstrate the handmade glassmaking process inside the glasshouse many years ago. Following the film, visitors are invited to dress as glassworkers and hold original tools once used at the Cambridge Glass Company. When the factory was torn down in 1990, museum volunteers rescued several hundred bricks and a replica of one of the original furnaces was built in the museum auditorium by Carl Beynon.

Next is the tour of the glass display area. During the tour, visitors will see the Sample Room featuring the original



Kingdon (Kib) Brady, grandson of W.C. McCartney, Secretary/Sales Manager for The Cambridge Glass Company for 50 years, stands next to a photo of his grandfather inside the National Museum of Cambridge Glass.

describing how to grow your own sweet potato vine in a Cambridge Glass vase. A map of the area surrounding the Cambridge Glass Co. property is also available during a Time Travelers group tour.

In another room, visitors can learn about the etching process and do a pencil rubbing from original Cambridge Glass Company etching plates. A few of the plates available are Rose Point, Chantilly, Imperial Hunt Scene, Wildflower and Portia. Also in this area is a large mural of Cambridge Glass Company Engraving Department. Herschel Hancock was the head of this department and a master of the craft.

The National Museum of Cambridge Glass is open April through October; Wednesday through Saturday from 9:00 am to 4:00 pm, and Sunday from Noon to 4:00 pm. For more information, call 740-432-4245 or visit www.cambridgeglass.org.

Group tours are welcome and can be scheduled by contacting the museum at 740-432-4245.

door and shelving from the factory. The Sample Room is part of the museum gift shop with pieces of Cambridge Rose Point and other etchings available for purchase.

Rose Point was one of the most popular etchings for The Cambridge Glass Company. This season the museum dining room display features Cambridge gold encrusted Rose Point stemware and accessory pieces. Also included in the setting are Pope Gosser China dinner plates in their Rose Point pattern and Wallace Bros. Sterling Rose Point flatware. Many years ago the Glass, China and Silver companies worked together to provide stunning designs for use in homes and table settings.

New this year at the museum in The Edna McManus Shepard Education Center is a kitchen exhibit that coincides with the museum's 2017 Time Travelers theme. Visitors will experience what life was like at home for a Cambridge glasshouse family in the early 1900s and see several of the Cambridge items that were used in the kitchen. Also included in the display is a Cambridge Glass Sweet Potato Vase and an original ad done by the Cambridge Glass Company

Photos courtesy of "Michael Neilson photos/ The Daily Jeffersonian" and The Daily Jeffersonian.

Time Travelers are dressed the part. Left to Right: Sharon Miller, Kib Brady, Lindy Thaxton and Cindy Arent are next to the handmade glassmaking process display inside the museum.



Crown of the Andes

Editor's note: This is an update to what was presented in the July 1989 issue 195 of the Crystal Ball.

One of our members was perusing **The Metropolitan Museum of Art "Met Collects"** videos (about objects acquired by the Metropolitan Museum of Art) and came across this episode:

<http://www.metmuseum.org/metmedia/video/metcollects/crown-of-the-andes>

If you watch the video, you'll learn the proper name for the Crown is "Crown of the Virgin of the Immaculate Conception of Popayán". You'll also learn it was used as a table centerpiece accompanied by Cambridge Rose Point 3500 stemware with gold encrustation.

As a result of the effort of several members and Ronda Kasl, curator, we have some additional high resolution black/white photos to share with you.



Cambridge
Crystal Ball

Published monthly by the National Cambridge Collectors, Inc.
to encourage and report the discovery of the elegant and boundless product
of the Cambridge Glass Company of Cambridge, Ohio

Issue No. 195 July 1989

Cambridge Glassware Accents Great Emeralds



Containing what is said to be the largest collection of emeralds in the world, the "Crown of the Andes" is now on exhibit at the Great Lakes Exposition in Cleveland. The gems are valued at \$4,500,000 and are under constant armed guard.

Preliminary to the placing of the emerald dotted crown on exhibition, a dinner was given at the Recess Club on the exposition grounds to Warren J. Piper, of Chicago, by Dudley S. Blossom, general chairman of the exposition. Mr. Piper heads the syndicate owning the "Crown of the Andes."

At the dinner, the crown with its flashing emeralds formed the table centerpiece. The illustration above shows the setting of the table. The stemware used was from the Cambridge Glass Co. A design was selected to provide a contrast to the color of the gems. The stemware was crystal in the No. 3500 line. It was decorated in the "Rose Point" etching with gold encrustation. Officials of the Cambridge Glass Co. are taking an understandable and proper pride in the fact that stemware from their factory was selected for this unusual occasion.

CHINA, GLASS AND LAMPS August, 1937



Can you imagine what these pictures would have looked like in color?



Text from July 1989 Crystal Ball article:

Containing what is said to be the largest collection of emeralds in the world, the "Crown of the Andes" is now on exhibit at the Great Lakes Exposition in Cleveland. The gems are valued at \$4,500,000 and are under constant armed guard.

Preliminary to the placing of the emerald dotted crown on exhibition, a dinner was given at the Recess Club on the exposition grounds to Warren J. Piper of Chicago, by Dudley S. Blossom, general chairman of the exposition. Mr. Piper heads the syndicate owning the "Crown of the Andes."

At the dinner, the crown with its flashing emeralds formed the table centerpiece. The illustration above shows the setting of the table. The stemware used was from the Cambridge Glass Co. A design was selected to provide a contrast to the color of the gems. The stemware was crystal in the No. 3500 line. It was decorated in the "Rose Point" etching with gold encrustation. Officials of the Cambridge Glass Co. are taking an understandable and proper pride in the fact that stemware from their factory was selected for this unusual occasion.

CHINA, GLASS AND LAMPS

August 1937



2017 Auction Weekend in Photos

Auction weekend began with the membership meeting held Friday was facilitated by David Ray. After satisfying the meeting requirements, Lynn Welker presented the "Show & Tell" items (show in the two photos to the right), and then a highlight of the auction.



Show & Tell



Auction weekend, an exciting and fun time



Auctioneer Craig Connelly handles the front action while his wife Lynn handles the backend.



50-50 raffle tickets were sold before the auction, with the proceeds going towards the purchase of new lighting in the museum cases.

Auction action



Bev (left) and Will (above) Acord worked long hours to ensure an outstanding auction. Frank Wollenhaupt(below) answers a question.



Auctioneer Craig Connelly preparing to start, with support from Mary Beth Hackett and Joy McFadden performing recorder duty.

2017 March Benefit Auction Results

refer to the January 2017 Crystal Ball for descriptions

1	\$35	57	\$825	113	\$55	169	\$40	225	\$60	281	\$25	337	\$35	393	\$15
2	\$15	58	\$100	114	\$20	170	\$40	226	\$70	282	\$35	338	\$10	394	\$20
3	\$15	59	\$35	115	\$38	171	\$60	227	\$20	283	\$40	339	\$80	395	\$45
4	\$45	60	\$100	116	\$65	172	\$275	228	\$35	284	\$20	340	\$5	396	\$10
5	\$35	61	\$60	117	\$45	173	\$30	229	\$25	285	\$35	341	\$10	397	\$30
6	\$90	62	\$110	118	\$40	174	\$105	230	\$35	286	\$25	342	\$25	398	\$10
7	\$60	63	\$150	119	\$175	175	\$80	231	\$35	287	\$50	343	\$10	399	\$25
8	\$50	64	\$55	120	\$50	176	\$65	232	\$25	288	\$23	344	\$225	400	\$20
9	\$25	65	\$40	121	\$15	177	\$100	233	\$35	289	\$120	345	\$55	401	\$20
10	\$45	66	\$75	122	\$290	178	\$130	234	\$40	290	\$50	346	\$200	402	\$45
11	\$30	67	\$30	123	\$85	179	\$25	235	\$30	291	\$1,250	347	\$170	403	\$25
12	\$80	68	\$20	124	\$200	180	\$40	236	\$150	292	\$500	348	\$25	404	\$35
13	\$375	69	\$20	125	\$40	181	\$50	237	\$23	293	\$300	349	\$10	405	\$10
14	\$15	70	\$410	126	\$45	182	\$125	238	\$10	294	\$1,400	350	\$120	406	\$30
15	\$35	71	\$1,075	127	\$25	183	\$25	239	\$10	295	\$25	351	\$20	407	\$13
16	\$110	72	\$35	128	\$40	184	\$220	240	\$275	296	\$5	352	\$40	408	\$5
17	\$60	73	\$83	129	\$25	185	\$30	241	\$25	297	\$10	353	\$50	409	\$25
18	\$60	74	\$20	130	\$45	186	\$120	242	\$25	298	\$35	354	\$50	410	\$20
19	\$45	75	\$70	131	\$15	187	\$35	243	\$65	299	\$130	355	\$50	411	\$30
20	\$55	76	\$45	132	\$90	188	\$45	244	\$25	300	\$18	356	\$55	412	\$45
21	\$20	77	\$65	133	\$140	189	\$55	245	\$400	301	\$25	357	\$180	413	\$13
22	\$40	78	\$20	134	\$55	190	\$50	246	\$35	302	\$10	358	\$60	414	\$20
23	\$40	79	\$675	135	\$30	191	\$120	247	\$250	303	\$50	359	\$125	415	\$30
24	\$70	80	\$100	136	\$130	192	\$100	248	\$275	304	\$75	360	\$55	416	\$30
25	\$70	81	\$35	137	\$215	193	\$65	249	\$150	305	\$75	361	\$30	417	\$40
26	\$210	82	\$80	138	\$80	194	\$45	250	\$40	306	\$80	362	\$15	418	\$10
27	\$245	83	\$85	139	\$130	195	\$135	251	\$25	307	\$30	363	\$75	419	\$35
28	\$25	84	\$45	140	\$70	196	\$35	252	\$55	308	\$40	364	\$35	420	\$25
29	\$120	85	\$50	141	\$925	197	\$155	253	\$30	309	\$85	365	\$40	421	\$15
30	\$30	86	\$30	142	\$45	198	\$55	254	\$70	310	\$60	366	\$25	422	\$50
31	\$55	87	\$175	143	\$55	199	\$20	255	\$75	311	\$45	367	\$30	423	\$10
32	\$140	88	\$60	144	\$50	200	\$25	256	\$95	312	\$5	368	\$15	424	\$50
33	\$60	89	\$80	145	\$80	201	\$35	257	\$60	313	\$35	369	\$10	425	\$90
34	\$70	90	\$65	146	\$80	202	\$330	258	\$35	314	\$55	370	\$40	426	\$10
35	\$90	91	\$35	147	\$30	203	\$50	259	\$13	315	\$5	371	\$45	427	\$13
36	\$45	92	\$40	148	\$175	204	\$65	260	\$25	316	\$45	372	\$135	428	\$30
37	\$100	93	\$200	149	\$30	205	\$50	261	\$30	317	\$55	373	\$70	429	\$30
38	\$210	94	\$390	150	\$30	206	\$70	262	\$35	318	\$35	374	\$375	430	\$70
39	\$35	95	\$110	151	\$35	207	\$60	263	\$20	319	\$13	375	\$40		
40	\$100	96	\$35	152	\$80	208	\$40	264	\$65	320	\$5	376	\$10		
41	\$100	97	\$350	153	\$40	209	\$30	265	\$25	321	\$20	377	\$10		
42	\$25	98	\$55	154	\$40	210	\$20	266	\$15	322	\$25	378	\$10		
43	\$25	99	\$75	155	\$110	211	\$5	267	\$180	323	\$10	379	\$25		
44	\$65	100	\$425	156	\$120	212	\$15	268	\$45	324	\$25	380	\$45		
45	\$75	101	\$35	157	\$85	213	\$20	269	\$120	325	\$20	381	\$180		
46	\$45	102	\$65	158	\$90	214	\$25	270	\$45	326	\$130	382	\$70		
47	\$45	103	\$110	159	\$65	215	\$30	271	\$200	327	\$40	383	\$210		
48	\$70	104	\$110	160	\$400	216	\$55	272	\$50	328	\$80	384	\$45		
49	\$45	105	\$140	161	\$275	217	\$25	273	\$210	329	\$15	385	\$60		
50	\$35	106	\$1,700	162	\$30	218	\$30	274	\$45	330	\$10	386	\$80		
51	\$180	107	\$50	163	\$35	219	\$30	275	\$110	331	\$35	387	\$60		
52	\$210	108	\$25	164	\$90	220	\$50	276	\$35	332	\$45	388	\$125		
53	\$160	109	\$35	165	\$300	221	\$55	277	\$25	333	\$10	389	\$75		
54	\$175	110	\$30	166	\$110	222	\$40	278	\$25	334	\$55	390	\$35		
55	\$45	111	\$40	167	\$225	223	\$140	279	\$35	335	\$30	391	\$290		
56	\$45	112	\$35	168	\$330	224	\$50	280	\$30	336	\$18	392	\$45		

Convention 2017 – ANIMAL HOUSE

continued from page 1

2007, he premiered his television show segment - Into The Wilds, of course featuring The Wilds. By 2012, The Wilds was welcoming over 100,000 visitors a year.

Tours of The Wilds cost \$30 a person. The tour lasts approximately 2 and a half hours and, as I said, tour one will be led by Sharon. If we get more than 30 registrants, additional tour directors will be scheduled. Sharon recommends you fill your gas tank before coming as there are no gas stations close to the facility. Also, parking is \$6.00 and they take credit cards.

I have already promised Sharon that I will be the first person to register for this tour and I hope you will quickly follow suit so we can begin to get counts for the tour. Our NCC private tour is currently planned to start Wednesday at 1:30 pm. Plus, we are asking members to arrive by 12:00 so they can grab a bite at the snack bar and get organized for the tour. We will be done in plenty of time to make Cambridge for dinner. This is a “rain or shine” event and will not be cancelled in the event of showers.

For more information on The Wilds, go to www.thewilds.columbuszoo.org. The Wilds is located at 14000 International Road in Cumberland OH. For those of you who have GPS, you can use this address for directions.

2017 Convention Registration is included in this issue. You will note the meal selections for Thursday, Friday and Saturday. We had really great feedback on the quality of food provided by Theo’s last year, so we are employing them again this year. Costs are up a touch from Theo’s this year (+ \$2.00) and we are sorry for that. Please remember that the facility – Pritchard Laughlin Civic Center also tacks on a \$1.50 per person charge to cover their staff that night. Both the PLCC and Theo’s charges are in the food cost to you shown on the registration form. NCC does not mark up any of these costs. For meal menu planning we followed a Land, Sea and Air animal approach. Can you tell me, should chickens be regarded as Air or Land???

Once again, **we will be employing Online Registration for Convention this year**, as well as the classic snail mail approach. In 2016, well over half of you registered

online in our debut year and we expect that number to grow in 2017. Thanks again to Freeman Moore for making this possible.

We are putting final touches on our educational program items and will have more details in our next Crystal Ball. And thanks to all of you who volunteered to do an animal display at PLCC. We were overwhelmed by the response and will look to include everyone in some way or another.

Now is a good time to book your hotel room. Remember, the Comfort Inn and Sleep Inn have an NCC Glass Rate of \$79/night, now including king rooms. The Hampton Inn also has a discount for NCC members so be sure to ask for it when you call. You can book the Comfort and Sleep Inn via these direct links:

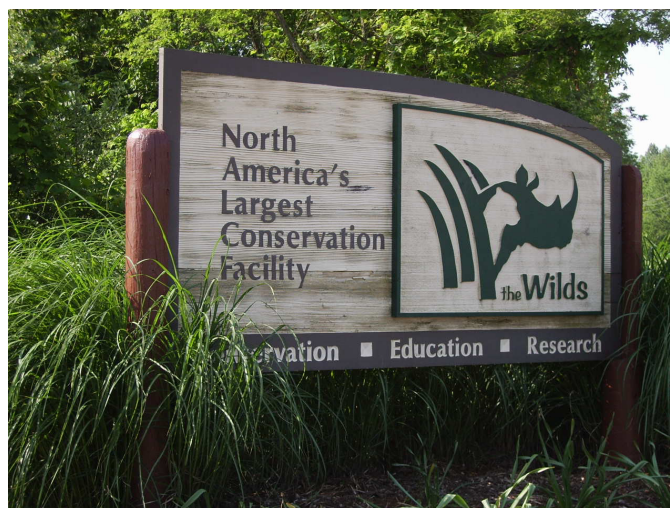
<http://www.comfortinn.com/ires/en-US/html/ArrivalInfo?hotel=OH204&srp=LGLASS&pu=no>

<http://www.sleepinn.com/ires/en-US/html/ArrivalInfo?hotel=OH587&srp=LGLASS&pu=no>

PLEASE REGISTER NOW. THANKS!

Go to the NCC Website www.CambridgeGlass.org and you will find a link to the online registration form as part of the convention information.

<http://www.cambridgeglass.org/convention/reg1.php>





Animal House

2017 NCC CONVENTION – 44th ANNUAL

June 21st through June 24th, 2017

Registration

We hope to see you all this June for another fun Convention, this time celebrating Animals, those made by Cambridge Glass AND other glass companies. Once again, you can register online AND WE ENCOURAGE YOU TO DO SO. Registration is due by June 1, 2017. (Registrations post-marked after June 1, 2017 will incur a late fee.) If you prefer the traditional way, you can send your check payable to NCC, Inc. along with the completed registration form to:

**National Cambridge Collectors, Inc.
Convention Registration
P. O. Box 416
Cambridge, Ohio 43725-0416**

Each person registering for the convention pays the \$25.00 registration fee which helps cover the cost of facility rental. Your registration fee includes admission to the NCC Glass Show and Sale and all other scheduled events. Please register for all events you plan to attend, including those offered at no charge. For children under ten years of age, there is no registration fee; however, they must pay for any meals they attend.

Show dealers and President Circle members – there will be no registration fee.

Please list each person registering separately. Names should be given as you wish them to appear on your name badge. Please provide your membership number and your email address on the registration form. If registering for more than three persons, list additional members on a separate sheet or the space provided below.

All registrants will receive an email confirmation of their registration. And PLEASE, register electronically as it helps your Convention organizers IMMENSELY!

Look for " Convention Registration " on the NCC website http://www.CambridgeGlass.org
--

Cancellation Policy

Written Cancellation up to 30 days before first convention event – full refund.

Written Cancellation up to 15 day before first convention event – full refund less \$10 handling fee.

Written Cancellation up to 5 days before first convention event – refund meals only.

Written Cancellation less than 5 days before first convention event – no refund.

Animal House

2017 NCC CONVENTION – 44th ANNUAL
June 21st through June 24th, 2017
Registration Form

<i>Name of Conventioneers</i> <small>(As you wish it to appear on your Name Badge)</small>	<i>Membership Number</i>	<i>First Convention</i>	
_____	_____	Yes	No
_____	_____	Yes	No
_____	_____	Yes	No

Address: _____

Email address _____ Phone Number (____) _____
(Registration confirmation will be sent via email when the above information is provided)

ACTIVITY	FEE	NUMBER ATTENDING	TOTAL
Registration (postmarked by June 1)	\$25.00	_____	_____
Late Registration (postmarked after June 1)	\$35.00	_____	_____
Dealer or President's Circle	N/A	_____	_____
Custom Tour – THE WILDS (per person)	\$30.00	_____	_____
Opening Celebration and Dinner (Sea and ?) * <small>Shrimp and Crab Alfredo, Homemade Lasagna, Spinach & Cheese Chicken, Glazed Carrots, Mixed Green Chopped Salad, Variety of Pies, Bread Stix & Beverages</small>	\$17.50	_____	_____
Banquet Dinner, Annual Meeting and Awards (Land and Air)* <small>Stuffed Turkey Breast, Carved Beef Tenderloin w/ Au Jus, Parsley Red Potato, Caribbean Blend veggies, Wedge Salad, White Chocolate/Raspberry Cheesecake, Chocolate Lasagna, French Bread & Beverages</small>	\$33.00	_____	_____
Toga Party/Safari Picnic Dinner (Sea, Land and ?) <small>Baked Whitefish, Deep-Fried Chicken, Beer Braised Pulled Pork Sliders, Cole Slaw, Loaded Potato Salad, Fresh Fruit, Buns, Brownies, Ice Cream Sundaes, sugar-free desserts, Iced Tea, Lemonade Punch and Coffee</small>	\$18.00	_____	_____
First Time Orientation and Coffee with Cambridge	N/A	_____	_____

* Meals include iced tea, coffee, taxes and gratuity. Cocktails are available for an additional charge. Please contact Rick Jones at Caprice0@aol.com if special meals are required due to dietary restrictions.

Any additional comments, information, special needs or registrants?



Animal House

2017 NCC CONVENTION

PRESENTLY SCHEDULED

(Education programs subject to change in time and topic)

WEDNESDAY, JUNE 21

- 1:30 pm** **Tour of THE WILDS (reservations required)**
- 6:00 pm** Dinner on your Own, Grab a Friend

THURSDAY, JUNE 22

- 9:00 am** Registration Opens National Museum of Cambridge Glass
- 4:00 pm** **Digital Safari – Miami Valley Study Group** Pritchard Laughlin Conf Room
- A navigation guide to researching Cambridge Glass**
- 5:00 pm** Cocktail Reception/Meet our Glass Hunting Dealers Pritchard Laughlin Galleria
- 6:00 pm** Opening Dinner Buffet, Endowment Fund-Raiser Pritchard Laughlin Galleria
- 7:30 pm** **Animal Bookends & Desk Items – Lynn Welker** Pritchard Laughlin Conf Room

FRIDAY, JUNE 23

- 8:00 am** Advance Numbers for Show Admission Pritchard Laughlin Galleria
- 8:00 am** Registration Opens Pritchard Laughlin Galleria
- 9:00 am** First Timers and Mentors Program National Museum of Cambridge Glass
- Coffee with Cambridge– meet our 1st Timers!
- 11:30 am** **Animals Across Glass World – multiple-presenters** Pritchard Laughlin Conference Room
- Pritchard Laughlin Exhibit Hall
- 1:00 pm** Glass Show Opens Pritchard Laughlin Exhibit Hall
- 5:00 pm** Glass Show Closes
- 6:00 pm** Cocktail Reception/President’s Circle Salute Pritchard Laughlin Galleria
- 6:45 pm** Banquet Dinner & Annual Meeting Pritchard Laughlin Galleria
- Awards Presentation
- 8:30pm** **Bring & Brag and Glass ID** Pritchard Laughlin Conference Room

SATURDAY, JUNE 24

- 7:00 am** Glass Dash – Early Bird Admission St. Benedict’s Gymnasium
- 8:30 am** Glass Dash – Regular Admission St. Benedict’s Gymnasium
- 10:30 am** Glass Show and Sale Pritchard Laughlin Exhibit Hall
- 12:00 pm** Display Case Review Pritchard Laughlin Galleria
- 2:00 pm** TBD Event Pritchard Laughlin Exhibit Hall
- 4:00 pm** Glass Show and Sale Closes
- 5:30 pm** **Dean Wormer** Cocktail Celebration Pritchard Laughlin Galleria
- 6:30 pm** **Toga Party and Dinner** Pritchard Laughlin Galleria
- 7:30 pm** **Program “Dolphin Candlesticks”:** Pritchard Laughlin Conference Room
- Zak McCamey

CONVENTION PACKET PICK-UP: Wed: Noon - 1:30 The Wilds;

Thurs: 9:00 – Noon Museum; 4:30 – 6:00 PLCC; Fri: 8:00 – Noon PLCC

In Memoriam

NCC is saddened to report that William C. Orme II, member #634, passed away in February 2017. He was born in 1926, the youngest child of the late Wilber L. and Marjorie Bennett Orme. He attended Cambridge schools and graduated from The Ohio State University in 1951 and then went to work for his father at the Cambridge Glass Company. When the glass company closed in 1954, he went to work for Imperial Glass, and then in 1957 for General Electric. After retiring from GE in 1988, he moved to Peterborough New Hampshire. He is survived by his wife, Gretchen, and his three daughters; Pamela Orme Wasyllick, Melinda Orme, and Jennifer Orme Zaveleta.



62nd ANNUAL SPRING EASTERN NATIONAL ANTIQUEN SHOW AND SALE

Fri., May 5, 2017 10 am to 5 pm
Sat., May 6, 2017 10 am to 4 pm

Carlisle Expo Center, 100 K St. Carlisle, PA

70 quality dealers of glass, china, jewelry and more
Exhibits, Glass Repair Good Food and Free Parking

Admission \$8.00 (\$7.00 with card) good 2 days

Best Show Around for Glass

Holiday Promotions, easternnationalantiques.com

Information 410-538-5558 or 443-617-1760



A digital media high school student from the Mid-East Career and Technology Center came to do her senior lab project, a documentary about Cambridge Glass! Maybe it'll show up on YouTube?



A Look Back In Time 1936

By Mark Nye

As in previous chapters of this on going history of the Cambridge Glass Company, as seen through the trade journals, wording, grammar and spelling is as it originally appeared. The source of each item is identified. CGL stands for “China, Glass and Lamps” while CGJ stands for “Crockery and Glass Journal.” Anything added by the editor is enclosed in []. Unless otherwise indicated, the items originated with the trade journal and its staff. If the text is from a Cambridge paid advertisement, this is indicated.

The World at a Glimpse

German forces occupy the Rhineland and Italy annexes Ethiopia. The Rome-Berlin Axis is proclaimed and four years later, in 1940, Japan joins. The Spanish Civil War begins as does the war between Japan and China. George V, the reigning English monarch, dies and his eldest son, Edward, becomes King Edward VIII. He soon abdicates and his younger brother, George, becomes King George VI. The widow of George V, Queen Mary, lives to see her granddaughter, Elizabeth ascend to the throne upon the death of her father, George VI.

January

Manufacturers Crystal and Colors. Tumblers Novelties Glass Tableware Stemware Rock Crystal Cut, Etched, Decorated. The Cambridge Glass Company, Cambridge, Ohio U.S.A. Showrooms New York, Los Angeles, Philadelphia, Chicago, Denver, Dallas. CGJ [Cambridge paid advertisement]

February

The Cambridge advertisement that appeared in the January issue of CGJ also appeared in the February issue.

March

The Cambridge advertisement that appeared in the January and February issues of CGJ also appeared in the March issue.

March

Caprice offered by the Cambridge Glass Co. is a

splendid pattern that presents the ridged effect that seems to be in demand by the market and yet it gets away from the usual in its petalled effect with the flowing ridges. So much can be said for the group that we can but touch it here and there and suggest that you investigate the smartness, suitability and the price appeal of this group. The entire array is offered in crystal and in a stunning shade of Moonlight, which is a limpid blue shade that picks up shades of blue on a table or offers its own color in contrast against a white cloth. The line is all inclusive with stemware, flatware, fancy ware and group of low-footed ware. CGJ

April

The Cambridge Glass Company advertisement previously seen in the January, February and March issues of Crockery and Glass Journal also ran in the April issue.

May

The lovely lines of Caprice are embodied in three new vases at the Cambridge Glass Co. The shapes are unusually graceful and may be had in ten different sizes. There are six beautiful colors to harmonize or contrast with any scheme of decoration. CGJ

May

The CGCo. advertisement seen in the previous four months' issues, once again appeared in the May issue of CGJ.

June

...is a salad set in the Cambridge Glass Co.'s “Caprice” line. This line consists of about 200 different items, and is available in crystal, in Moonlight (light blue), and in a satin finish called Alpine Caprice. CGL

June

Cambridge's “Caprice” console set – seen at Altman's and Gimbel's. CGL [Illustrated were a pair of Caprice No. 72 candlesticks, No. 65 two handled bowl, and a large plate, upon which the bowl sat.]

July

Moonlight Caprice distinguished by its rippling highlights of delicate blue. More than one hundred smart, useful items in the new Caprice pattern. Made also in Crystal. Full Cambridge displays permanently displayed at the Chicago Showroom. Cambridge Glass Company – 1547 Merchandise Mart, Chicago, IL CGJ [Cambridge paid advertisement. Illustrated was the No. 201 ice bucket]

July

A rose point etching is particularly lovely on a new crystal vase at Cambridge Glass Co. Five different heights from four to twelve inches are obtainable in this and in clear amethyst, amber, forest green, or royal blue. CGJ [Illustrated were the No. 6004 vases]

July

Hotel rooms are small. Our line is large. In order to see it properly we invite you to visit our permanent and convenient showrooms where you can view the line displayed in its entirety—including our many new creations for fall. The Cambridge Glass Co. 184 Fifth Avenue New York. 1547 Merchandise Mart, Chicago. Factory Cambridge, Ohio CGJ [Cambridge paid advertisement]

August

The two glass jugs illustrated show two items featured by the Cambridge Glass Co., from their Caprice line. The larger jug, which is of the Doulton type, is most attractive, while the smaller one, 32 oz. in size, is suitable for tomato, orange, or grape juice, etc. These are to be in an etched crystal decoration or in Moonlight (light blue). CGL [Editor's note: "etched crystal decoration" is the Alpine finish. The writer failed to mention these two jugs were also available in plain crystal]

August

The Cambridge advertisement that previously appeared in numerous earlier issues, once again was published in the August and September issues of CGJ. It also appeared in the October, November and December issues.

September

An entirely new wildflower etching is ready at

Cambridge Glass Co. in a full range of stemware and fancy pieces. The plate above shows the delicacy of the pattern. Candlelight pieces are now being made with design gold encrusted for greater richness and beauty. The bowl in the picture also has a gold rim. CGJ

October

Cambridge Glass Company is showing a new line of gold decorated Rose Point glass on Carmen (ruby)... available in full stemware and accessory pieces such as bowls, candlesticks, etc. As will be seen from the pieces pictured, the stemware is featured with a ruby bowl and Rose Point decoration with crystal stem and foot. This is the very newest thing Cambridge has done. CGL [Illustrated were three pieces of 3500 stemware: goblet, tall sherbet and a footed tumbler.]

December

Invitation. You are cordially invited to visit our Cambridge Sample Room at any time after January 11th. Our complete lines, including new ones, will be open for your inspection. The Cambridge Glass Company, Cambridge, Ohio. If unable to visit Cambridge, kindly inspect our lines at one of our resident offices. CGL [Cambridge full page paid advertisement]

December

Classic décor is ever in demand and the Cambridge Glass Co. offers a charming candelabra in crystal. The lyre is the center of the two-way candle stick, which is supported at the bottom by a squared base while the two arms rise from either side of the lyre and are well set off by triangular full cut four inch prisms. CGJ

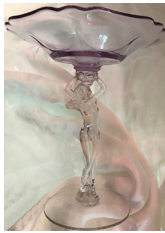
December

Eugene P. Henn, who has long been associated with the New York office of the Cambridge Glass Co., has been appointed to the managership of that office, taking the place of Oliver C. Graham. The change takes effect on January 1. [1937] CGL

Welcome to the eBay Report. This column features Cambridge glass items that sold on eBay circa mid-February to early March, 2017. Selling prices have been rounded to the nearest dollar. If a color is not mentioned, assume that the item or portion of it being discussed is crystal. Here we go:

Statuesque (Nude Stem) Line

A brandy with Heatherbloom optic bowl sold for \$128. A flared comport with Heatherbloom bowl sold for a very reasonable \$150. It seems like every month now I'm reporting on the sale of a late-period "tall" cocktail with a Smoke bowl. This time one sold for \$119, which is right in the same range as the others.



A set of 5 regular size cocktails with Carmen bowls sold for \$285.

Etched Tableware and Stemware

A #3400/16 cream and sugar in Emerald Green with Apple Blossom etch sold for the opening bid of \$35. I've always liked this particular shape, which has sort of a 4-sided cone shape and angular handles, rather than the more often-seen #3400 with keyhole handles.



A tisket, a tasket, a 7 inch Rose Point basket skipped off for the opening bid of \$250. This is the taller #119 basket, not the little nappy-sized one in the 3500 Gadroon line. The last one I reported on back in October 2016 sold for \$255, so I guess this is about market price right now.



A pair of #485 crescent salad plates etched Rose Point sold for \$214.

A round Rose Point plate with Wallace sterling silver rim in a rose and leaf pattern sold for \$44. The overall diameter was 9-1/2 inches, so the glass plate was probably the 8 1/2 inch size.

A set of 4 #498 8 ounce flat tumblers etched Diane sold for \$113. I don't see these laying around all the time. The seller later offered another set of 4, which sold for \$128.



A 13-1/4 inch Round ware plate in Emerald Green with Hunt etch sold for \$76. Some scratching was noted. The same seller offered three sets of 4 matching plates, 8-1/4 inch size, for \$80 Buy It Now. All three sets sold. I wonder if the same buyer got all twelve, and if he or she bought the large plate, too?



A #1402/29 17 inch cabaret plate with cupped-up rim etched Wildflower sold for \$125.

Enamel, Gold and Silver Decorations

This was an interesting item: A #1936 Pristine water goblet with a gold encrusted Leaf and Acorn design was offered for a Buy It Now price of \$170. This decoration is known as UE233, with the UE standing for "uncatalogued etching." It sold for \$127 when the seller applied a 25% off "sale" price to it.



From the "Please don't shoot the Messenger" Department: I think the decanter offered as a Cambridge #1321 28 ounce Bar Bottle in Carmen with silver on the collar and silver deposit script lettering of "Scotch" is actually... *Paden City*. Yes, the shapes are almost identical, but that stopper is the sticking point. If you look carefully, you'll see that it is a little too small to be the regular sized Cambridge "octagon diamond" stopper, which is found in crystal about 99% of the time. (The Mt. Vernon decanters take the large version of this stopper.) The red color is also rather dark for Cambridge, another sign that it's probably not be theirs. If you have the 1978 book, *Paden City, The Color Company* by Jerry Barnett, you'll see a virtually identical decanter shown in a catalog reprint on page 65 as their #901 23 ounce bar bottle.



A Gadroon #3500/39 two-handled footed sandwich plate in Crown Tuscan with gold encrusted Diane etch sold for \$56.



Someone shelled out \$214 for an Ebony #3450 Nautilus 9 inch footed vase with a nice-enough silver deposit decoration.



A #3400/38 80 ounce ball jug in satinized crystal with a Rockwell sterling silver overlay of geese and cattails sold for \$271.



A #3400/38 80 ounce ball jug in Royal Blue with a likewise nice-enough silver deposit decoration brought the opening bid of \$595. I was a little surprised it sold, as the silver work was definitely not Rockwell-level quality but still, an impressive ball jug for the lucky collector.

A #3400/4 12 inch 4-toed bowl and a pair of 3400/646 “keyhole” style single candlesticks in Amethyst, etched and gold encrusted Gloria, sold to someone who no doubt had fast, fast fingers for a Buy It Now price of \$265. Slight wear to the gold was noted, but I’ll bet the buyer isn’t complaining.



Miscellaneous



A pair of #2900 flower frogs (these are semi-circular or “C” shaped) in Peach Blo sold for the opening bid

of \$55. I dunno about you, but I don’t see these floating around all over the place.

A Wildflower “oyster cocktail” sold for \$34 -- only it wasn’t an oyster cocktail; it was the #1337 footed cigarette.

Question: When is a Cambridge ivy ball vase with a ball-shaped stem not Cambridge? Answer: When it’s Fry... or Morgantown. A Fry ivy vase with pink foot and bowl was listed as Cambridge and sold for \$25. I can understand someone confusing a Morgantown ivy ball vase with the “Golf Ball” stem for Cambridge, but Fry ones are much different. Here are some tips: If it has a matching-color bowl and foot and spiral-shaped crystal connector,



it’s almost certainly Fry. If it has those attributes, plus a crackle finish or pinches on the bowl (or both), then it’s rare Fry. If it has a hobnail stem with notches in it, it’s a Cambridge 1066 ivy ball. If it has no notches, it’s gonna be Morgantown. Cambridge 1066 ivy balls will sometimes be bi-color, but when they are, it’s generally the stem and the foot one color, and the bowl another. The color combination most often seen is Gold Krystol bowl/Amber foot and stem, but there are others.

Question #2: When is a Cambridge #402 (or #938) vase not Cambridge? Answer: When it’s a Paden City #184 vase. A 10 inch yellow one with Paden City’s lovely large-scale Orchid etch was listed as Cambridge for \$125 Buy It Now, and -- can you imagine? -- someone had the audacity to buy it right out from under me. Well, if I had seen it first, I would have been that audacious someone.



Why did a 3500/25 Gadroon Ram’s Head bowl in Azurite fetch only \$51?



I didn’t realize Moonlight Blue Caprice blown parfais were that hard to find, but apparently they are, as one seller sold two, each for \$153.

A pair of Willow Blue Everglades #1211 Candelabrum and a #1207 Center Bowl sold, but not until the second time it was offered, still at the \$265 asking price.

A seller offered a Cascade 6-1/2 inch wine, which sold for the opening bid of \$60. Why would anyone in his right mind pay \$60 for a CASCADE wine? Well, because it was the rare, practically-unseen BLOWN version. I have to admit, I’VE never seen these before. The seller later listed a set of 4 of them, which sold for the opening bid of \$200.



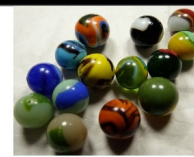
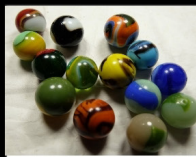
I hate to be anticlimactic, but for the first time in many moons, I didn’t notice any Cambridge items during this reporting period that really soared in price. Oh well, I’m sure there will be lots of them next time.

If you see any interesting Cambridge glass on eBay that you think I should be watching or reporting on, or if you have any other input, feel free to contact me at LAGlass@pacbell.net. Until next month, happy Cambridge hunting!

WANTED

Glass Dash Participants

We are on the lookout for several interested glass dealers for the 2017 Glass Dash which will be held Saturday June 24, at the St. Benedict's Gym, the same location as the past several years. The dash is where everyone gets the same chance to add that rare item to the collection. We are looking for anyone that is wanting to reduce their collection or just has too much. This is a great venue to reduce your collection and add that rare item. If interested in joining the fun, please contact Frank Wollenhaupt by email at fewvic303@sbcglobal.net or just give him a call at 937-475-2889.



Cambridge Area Collectors Show for Marbles and Glass



April 15, 2017

Southgate Hotel, Cambridge Ohio

For more information, visit our website at
www.cacmibshow.com



The 82nd Show

Sponsored by the Del-Mar-Va Depression Glass Club

2017 Show and Sale

All American: Pattern, Elegant, Art Deco & Depression-Era
Glassware, China, Kitchenware, Pottery, Books & Linens

Special Display: "Reamers! A Juicy Twist"

Saturday, **April 22, 2017** 10 am - 5 pm

Sunday, **April 23, 2017** 10 am - 3 pm

DuVal High School

9880 Good Luck Road at Greenbelt Road
Lanham, MD 20706

BW Parkway to Route 193 East – Greenbelt/NASA
(about 2.5 miles to DuVal H.S.)

****Glass Identification - Door Prizes - Food****

INFO: 202-544-2333/202-363-6331;

Email: Greg.Vass76@icloud.com

Admission: \$4.00

NCC welcomes the
following new members

Charles Bernard OH

Cynthia Bernard OH

For Sale - NCC Books and DVD

Published by NCC • Members receive a 10% discount

TITLE		REGULAR PRICE	MEMBER PRICE
1910 NearCut Catalog Reprint	108 pages, paperback, no price guide	\$14.95	\$13.45
1927-29 Catalog Reprint	66 pages, paperback, no price guide, includes identification guide	\$9.95	\$8.95
1930-34 Catalog Reprint	250 pages, paperback with 2000 price guide	\$14.95	\$13.45
1930-34 Catalog Index	Index for above	\$2.00	\$1.80
1949-53 Catalog Reprint	300 pages, paperback, no price guide	\$19.95	\$17.95
Cambridge Colors II (New)	Hardcover with price guide	\$19.95	\$17.95
Cambridge Rose Point – A Collector's Guide *** NEW ***		\$29.99	\$27.00
Caprice	200 pages, paperback, no price guide	\$19.95	\$17.95
Decorates	136 pages, paperback, no price guide	\$14.95	\$13.45
Etchings (2nd Edition)	102 pages, paperback, no price guide	\$17.95	\$16.15
Etchings, Non-Catalogued	70 pages, paperback, no price guide	\$12.95	\$11.65
Etchings: Blossomtime	26 pages, paperback, no price guide	\$7.95	\$7.15
Etchings: Candlelight	30 pages, paperback, no price guide	\$7.95	\$7.15
Etchings: Chantilly	44 pages, paperback, no price guide	\$7.95	\$7.15
Etchings: Diane	53 pages, paperback, no price guide	\$7.95	\$7.15
Etchings: Elaine	64 pages, paperback, no price guide	\$9.95	\$8.95
Etchings: Portia	57 pages, paperback, no price guide	\$7.95	\$7.15
Etchings: Wildflower	42 pages, paperback, no price guide	\$7.95	\$7.15
Rock Crystal Engravings	119 pages, paperback, no price guide	\$17.95	\$16.15
Rock Crystal Engravings (Listings)	Companion to above; lists all pieces in all patterns	\$9.95	\$8.95
Rock Crystal 1940 Illustrated Catalog & Price List		\$14.95	\$13.45
Rose Point - Second Edition	146 pages, paperback, no price guide	\$19.95	\$17.95
Pharmaceutical Catalog No.8 1915-1920 Reprint	68 pages, paperback, no price guide	\$9.95	\$8.95
Cambridge Arms compendium		\$7.95	\$7.95
1916 General Catalogue		\$13.95	\$13.95
Rose Point Program - DVD (Postage \$3.00)		\$19.95	\$17.95
Caprice Program - DVD (Postage \$3.00)		\$19.95	\$17.95

How to Order by Mail or from the NCC Website

Send orders to:
NCC • PO Box 416 • Cambridge, OH 43725

OHIO RESIDENTS PLEASE ADD 7.25% SALES TAX

SHIPPING:
\$5.00 FOR THE FIRST PUBLICATION
\$1.00 FOR EACH ADDITIONAL ITEM

Please include your name, complete mailing address and your phone number or e-mail address.

Payments by check or Money Order only, payable to NCC

Books may also be purchased on the NCC website,
www.cambridgeglass.org.

Major Credit Cards are only accepted for web purchases.



NCC Events

**2017 NCC Auction
Saturday March 4, 2017**

**2017 NCC Convention
June 22-24, 2017**

**2017 Fall Meeting
October 21, 2017**

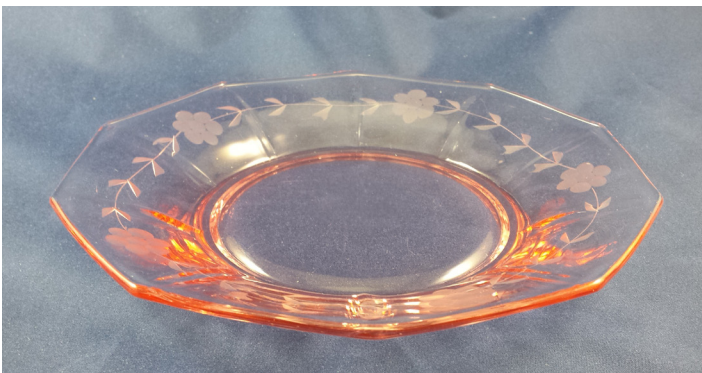
New Member Benefit

Each NCC household is allowed one free 20-word classified ad in the Crystal Ball per calendar year as part of their membership. This can be a "For Sale" or "Wanted" type of classified ad. Submit your ad by email to editor@cambridgeglass.org

CLASSIFIEDS

WANTED: #278 11" footed vase etched Daffodil, contact Jeannie_Moore@verizon.net

Recent Finds



761 - Decagon 8 in. Deep Salad Plate, Peach-Blo, Unidentified Gray Cutting

Glass Shows

April 8-9, 2017

Westchester Glass Club
Collectors Glass and Ceramics Show & Sale
Greenwich Civic Center, 90 Harding Road
Old Greenwich, CT

April 22-23, 2017

Del-Mar-Va Depression Glass Club's Show and Sale
DuVal High School, Greenbelt Rd. @ Good Luck Rd.
Lanham, MD
Greg.Vass76@icloud.com

April 22-23, 2017

Brilliant Glass in Corning Show
American Brilliant Cut, Engraved, Art & Early Glass
The Corning Museum of Glass
Corning, NY 14830
<https://www.facebook.com/events/1211953098820663/>

April 22-23, 2017

Great Lakes Depression Glass Collectors Club
43rd Annual Depression & Elegant Glass Show & Sale
876 Horace Brown Dr.
Madison Heights, MI 48071
<http://www.depressionglassclub.com>

May 5-6, 2017

Eastern National Antique Show & Sale
62nd Annual Spring Show
Carlisle Expo Center
Carlisle, PA
<http://easternnationalantiques.com/>

May 7, 2017

Big Apple Depression Glass Show & Sale
Albertson V.F.W. Hall
Albertson, NY
cupboard@optonline.net

May 19-20, 2017

Valley Glasshoppers Glass Show and Sale
1309 Opequon Ave.
Winchester, VA 22601
<http://www.valleyglasshoppers.org/>

June 3-4, 2017

Old Morgantown Glass Show and Sale
28th Annual Convention @ Westover VFW Hall
Westover, WV
<http://www.oldmorgantown.org/>

June 23-24, 2017

National Cambridge Collectors Annual Show & Convention
Pritchard Laughlin Civic Center
Cambridge, OH 43725
<http://cambridgeglass.org/>

DEALER DIRECTORY

Dealer Directory - \$24 for 12-months, size limited by box (see below). Includes listing on NCC website.


Advertising Rates:

1/8 page \$15 1/4 page \$20
1/2 page \$30 Full page \$50

Electronic submissions should be emailed to:

editor@cambridgeglass.org

Use Word. Mailed submissions and all payments should go to PO Box 416, Cambridge, OH 43725. Deadline is 10th of preceding month. Ads must be paid in advance. Show listings are FREE; send info to PO Box or e-mail address 60 days before event.



Connecting Buyers & Sellers!
Tell us what you are looking for and we help find it.
CAMBRIDGE GLASS.US
P. Snyder 740-601-6018
E-Mail and Find Your Glass!
psnyder@cambridgeglass.us
www.cambridgeglass.us

E-Blast
When you are searching for Cambridge glass, email your request and it is emailed to all members and dealers.
P. Snyder, 1500 Edgewood Dr., Circleville, Ohio 43113

PATTON HOUSE ANTIQUES

Specializing in Glass
Heisey • Cambridge • Fostoria • Duncan

Factory Antique Mall
Verona, VA off I-81. Exit 227

The Daniels, Box 547 Louisa, VA 23093
(540) 967-1181

Cheshire Cat Antiques

Specializing in elegant depression to mid-century era glass and vintage kitchen glass.

Francee Boches > 305-884-0335
fboches@cheshirecatantiques.com



Cherished Collectibles

Shopping 24 hours in our online store
Glassware, Figurines, Collectors' Plates

www.cherishedcollectibles.com
Elegant and Depression Era Glass

Heirloom Glass Antiques & Gifts Large Selection Of Cambridge

13411 Columbia Hwy.
Lynnville, TN 38472
www.heirloomglass.net 931-446-5492
juanita@heirloomglass.net

Edward Sawicki

Memories Antiques

"Glass is our Passion"
Candlesticks and stemware our Specialty."

PO Box 153 646-522-1506
Dunnellen, NJ 08812 ejsawicki@optonline.net

CRYSTAL LADY

1817 Vinton St. Omaha, NE 68108
Bill, Joann and Marcie Hagerty
402-699-0422

Specializing in Elegant Glass & Collectibles
www.crystalladyantiques.com

Glen & Carolyn Robinson White Rose Antiques Specializing in Depression Era Glassware

2454 McFarland Road
York, SC 29745

803-684-5685
gandcrobinson@aol.com
whiteroseglassware.com

CRYSTALLINE COLORS

Cambridge • Fostoria • Elegant Glass
Penny Court Mall, Cambridge - 2 booths
Medina Antique Mall
Medina, OH (I-71, exit 218)

Lynne R. Franks 216-661-7382

GLASS FROM THE PAST

Maureen Gillis



www.glassfromthepast1.com
email: maureen@glassfromthepast1.com

Cambridge Nudes - Dave Small

[HTTP://CambridgeNudes.com](http://CambridgeNudes.com)

3011 Cambridge Statuesque

Buy, Sell, Trade

davesmall@mac.com

281-376-3686



TWEAK COLLECTIBLES

Specializing in Elegant Glass
BUY & SELL
WANTED: CAMBRIDGE TURKEYS
417-742-3653
btummons@aol.com

Virtualattic at The Glass Chalet

Specializing in
Elegant Depression Era Glass

Sandra L. Bridwell-Walker

PO Box 726
Newcomerstown OH 43832-0726
740-492-5022 (H) 817-559-0328 (C)
virtualattic@sbcglobal.net theglasschalet@sbcglobal.net

Max Miller

Elegant American Glassware

www.maxmillerantiques.com

The Market Place 713-410-4780
10910 Katy Freeway.
Houston TX 77043 mmxglass@aol.com

Ohio Valley Antique Mall

7285 Dixie Highway (Route 4)
Fairfield, OH 45014
Cincinnati's Largest Multi-Dealer Antique Mall
Hours: DAILY 9:00 a.m. - 9:00 p.m.

513-874-7855
www.ohiovalleyantiquemall.com
cfaxon@ohiovalleyantiques.com



ISAACS ANTIQUES

(740) 826-4015

☞ Located in ☜

Penny Court Mall **Relics Mall**
637 Wheeling Ave 616 Main St
Cambridge, OH Zanesville, OH

BAKER FAMILY MUSEUM

805 CUMBERLAND ST.
CALDWELL, OHIO 43724
740-732-6410

bakermuseumnellbaker@msn.com

Wed & Thurs 9-4; Fri - Sat 9-5

MARGARET LANE ANTIQUES

2 E. Main St. New Concord, OH 43762
Lynn Welker (740) 826-7414

Cambridge Glass Matching Service
Hours: Mon-Fri 10-12 AM, 1-5 PM
or by appointment

Our House Antiques



Linda and David Adams
Las Vegas, NV
1-800-357-7169



www.OurHouseAntiques.com
email: David@OurHouseAntiques.com

National Cambridge Collectors, Inc.
PO Box 416
Cambridge OH 43725
email: editor@cambridgeglass.org
website: www.cambridgeglass.org



Friends of Cambridge – Annual Fund

NCC exists through member giving using an Annual Fund system to raise operating funds and to ensure the preservation of Cambridge glass for future enthusiasts. The Annual Fund uses a common member "renewal" date and NCC sends out Annual Fund materials to everyone once a year. There are no monthly reminders or monthly renewal dates. The Annual Fund is NCC's primary means of support and all Annual Fund gift recognition levels are per household and include membership for all adults within the household. Additionally, each household will receive a subscription to the Crystal Ball newsletter, unlimited admissions to the museum, and rights to vote in elections for the Board of Directors. Multiple households at the same address are welcomed. NCC is a 501C(3) organization and Annual Fund gifts are allowed as a tax deduction under Section 170 of the Internal Revenue Code.

Levels of Membership

Patron	\$35
Benefactor - Century	\$100
Benefactor - Mardi Gras	\$200
Benefactor - Japonica	\$500
President's Circle	\$1,000

President's Circle includes Convention registration for two members in the household and one copy of any new NCC publications.

The National Museum of Cambridge Glass

Located at 136 S. 9th Street
in downtown Cambridge

