



Cambridge Crystal Ball

Published by the National Cambridge Collectors, Inc. as a resource which informs, invites and inspires people to encourage the continued preservation of the glass produced by the Cambridge Glass Company of Cambridge, Ohio for future generations.

Issue No. 504

ISSN 2474-5987

January 2017

IT'S AUCTION TIME!

by Bev & Will Acord

We are excited about the wonderful selection of Cambridge glass in this year's auction to be held on Saturday, March 4, 2017 at the Pritchard Laughlin Civic Center. The preview begins at 8:30 a.m. and the auction starts promptly at 9:30 a.m.

You can review the catalog included in this issue and visit www.cambridgeglass.org to view all the great photographs. We have a fantastic collection of group shots as well as individual shots of each lot.

We began preparations for the 2017 NCC Auction in August when consignors sent us their proposed lists. Like last year, there were many consignors who submitted a little less than 1000 items to select from. In order to limit the auction to one day we narrowed the selection to around 430 items. This is one of the hardest parts of the process as there was so much wonderful glass to choose from. Those items that were not selected please hold until next year!

We moved to the Yellow house next to the Museum to unpack, photograph, sort into auction order and repack the glass for safe storage and later transport to the Pritchard Laughlin Civic Center for the auction. We would like to thank those who helped in making this very important auction preparation go smoothly: Larry and Susan Everett, Frank and Vicki Wollenhaupt, David Rankin and Lynn Welker. This is not easy work; we really could not do without you.

And to all those who have so graciously offered their help and support for all the work it will take setting

up the auction and working auction day, thank you as well. And thanks to the consignors who provided all the wonderful glass.

So start making your selections of the items you are going to bid on now! Make your hotel reservations right away to join us for the auction, March 4th 2017 as well as the Friday night quarterly meeting and "Auction Preview" presented by Lynn Welker on March 3rd.

This is one of NCC's most important fund raising activities. See you at the auction!



What's Inside

It's Auction Time!	1
President's Message	3
Give a Little, Help a Lot	5
Happy New Year & Thank You for Your Support. . .	6
2017 Benefit Auction Information	8
2017 Benefit Auction Listing	9
eBay Report	18
An Enchanting Convention.	20

National Cambridge Collectors, Inc.

PO Box 416 Cambridge, OH 43725-0416

Board of Directors

	2017	
Ken Filippini	Millie Loucks	Freeman Moore
	2018	
Julie Buffenbarger	Doug Ingraham	David Ray
	2019	
Rick Jones	Lindy Thaxton	Lynn Welker
	2020	
Cindy Arent	Larry Everett	Sharon Miller

Officers

President	David Ray
Vice-President	Doug Ingraham
Secretary	Sharon Miller
Treasurer	Millie Loucks
Sergeant-at-Arms	Larry Everett

Director of Strategic Planning	Ken Filippini
Director of Human Resources	David Ray
Chair, Endowment Committee	Doug Ingraham

Member Services

Vice President

Member Relations
Convention
Digital Media
Glass Dash
Glass Show
Study Groups
Webmaster

Rick Jones
Freeman Moore - Membership Database
Rick Jones - Convention Director
Alex Citron - Manager of Facebook Operations
Larry Everett & Frank Wollenhaupt
Sandra Bridwell-Walker
Jeannie Moore - Study Group Coordinator
David Adams

Development

Vice President

Campaigns

Events

Projects
Publicity

(vacant)
Ken & Jane Filippini - Annual Fund Directors
Larry Everett - Director of the Heritage Society
Will & Bev Acord - Auction Managers
Lynn Welker - Auction Manager
Carl Beynon - Jeweler & Scotties Project Manager
Jonathan Fuhrman

Education

Vice President

Crystal Ball
Publications
Media Productions
Research
Programming

Larry Everett
Freeman Moore - Executive Editor
Mark Nye - Director of Publications
Dave Rankin - Director of Media Productions
Mark Nye - Archivist
Greg Vass - Director of Programming

Museum

Vice President

Public Operations

Facilities & Grounds
Collections
Merchandise Sales

NCC History
Community Relations

Cindy Arent
Sandra Bridwell-Walker - Docent
Julie Davey - Docent
Sandy Rohrbough - Docent
Betty Sivard - Docent
Gary Wiseman - Docent
Carl Beynon - Director of Facilities
Lynn Welker - Director of Collections
Lynn Welker - Gift Shop Manager
Cindy Arent - Gift Shop Manager
Mark Nye - Archivist
Cindy Arent

Administration

Vice President

Accounting & Finance
Information Technology

Ken Filippini
Lisa Neilson - Office Manager
(vacant)

ADDRESS CHANGES

Please send address changes to:
Membership - NCC
PO Box 416
Cambridge, OH 43725-0416
or by e-mail to:
membership@cambridgeglass.org



CONTACT US

136 South 9th Street
Phone: 740 432-4245
nccglass@yahoo.com



David Ray, President
e-mail: westervillesh@hotmail.com
Sharon Miller, Secretary
e-mail: secretary@cambridgeglass.org

Heritage Society

Ensuring the preservation mission of the NCC through planned giving and estate bequests.

Members of The Heritage Society are those who have included the NCC in their wills or estate plans, thus providing the organization with a secure future.

The mission of The Heritage Society is to foster smart estate planning and to assure that NCC is not forgotten as an important beneficiary. Any pledge is meaningful and appreciated.

All Cambridge collectors - both current and future - will benefit from, and be grateful for your support.

Let us know how we can help with your future plans.

NCC Website: www.CambridgeGlass.org

Miami Valley Study Group Website: www.mvsg.org



PRESIDENT'S MESSAGE

Highlighting 2016

Throughout the past forty-three years, the National Cambridge Collectors has been supported by a dedicated group of volunteers whose primary focus was to build a strong glass collectors club and sustain a first-class museum. Currently, we have 835 members from 43 states, the District of Columbia, and Canada. With the help of our docents, volunteers and the financial support of our members, we operate a museum showcasing the finest collection of Cambridge glass in the world. Having had the privilege to serve NCC for the past 10 years, I have witnessed first-hand the stalwart commitment of our members to grow, support, and maintain our current club operations. I want to thank all the volunteers who dedicated countless hours planning, executing, and supporting NCC's events in 2016.

Nearly 150 enthusiastic Cambridge glass collectors convened in Cambridge, OH for the annual March Benefit Auction. Besides the Annual Fund, the auction is NCC's largest fund raiser of the year. Of the 433 lots offered in the 2016 auction, many were identified as rare and unusual. Throughout the day, many friendly battles occurred as collectors competed for their favorite pieces of Cambridge glass. Due to the generosity of our consignors, collectors added many quality pieces to their collections. Although the March auction runs seamlessly every year, the work completed by Will and Bev Acord, Lynn Welker, Dave Rankin, and many volunteers requires several months of planning. Since auction consignment lists began arriving in August, the auction committee selected, received, checked, photographed, cataloged, numbered, and packed each item. I want to thank the members of the Auction Committee and all the volunteers who help organize and execute the March Benefit Auction. The 2017 auction catalog is printed in this issue of the Crystal Ball and individual color photographs of each item can be viewed on the website.

Since its inception, monies received from the Annual Fund helped support and maintain the National Museum of Cambridge Glass. 2017 will mark the museum's 15th

anniversary at its current location. In addition to funding museum operations, the Annual Fund has afforded NCC the ability to build its Endowment Fund to \$400,000. Although this is a remarkable accomplishment, the 2017 budget estimates museum operations and maintenance expenses will exceed \$60,000. In addition, hundreds of volunteer hours will be required to clean, operate, and support museum operations. Your 2016 Annual Fund commitments totaled \$43,500. The 2016 Annual Fund Committee consisted of Ken and Jane Filippini, Rick Jones, and Freeman Moore. I want to thank the committee for organizing and executing the Annual Fund. Also, I want to thank those members who generously supported the Annual Fund and renewed their commitment to be Friend of Cambridge.

Convention Director, Rick Jones, energized more than 150 members to gather in Cambridge during the fourth weekend of June to participate a series of events centered around a *Hollywood* theme. Attendees began convention with a *Hollywood*-style red carpet reception at the National Museum of Cambridge Glass. Along with many convention activities and educational programs, conventioners were presented with two outstanding glass buying events. Through the hard work of Rick Jones and Sandy Bridwell-Walker, 20 dealers from around the country offered their finest pieces of elegant glassware for sale. Many rare and unusual pieces of Cambridge glass were available for purchases as nearly 300 enthusiastic buyers entered the showroom throughout the two-day event. There was a buzz in the air as collectors hurried from booth to booth searching for their newest acquisitions. The following morning, Cambridge collectors were given a second buying opportunity at the Glass Dash. For me, shopping the Glass Dash is an exciting and unique experience that few glass collectors experience. Shopping a glass show while dealers are unpacking their merchandise offers collectors a "first chance" opportunity to purchase pieces for their collection. I want to thank Rick Jones, Sandy Bridwell-Walker, Frank Wollenhaupt, Larry Everett, Jim and Nancy Finley, Lynn Welker, the Miami Valley Study Group, and the many volunteers who helped make the 2016 Annual Convention a huge success.

At this year's convention, author Gary Turner witnessed

his life-long dream become a reality. Gary has been photographing Cambridge Rose Point for almost 35 years compiling individual photographs of nearly every known piece. Throughout 2015 and 2016, Gary and NCC worked together putting the final touches on the finest Rose Point reference guide ever printed. Gary generously donated 100% of the proceeds and printing rights to NCC so future generations of Cambridge Rose Point collectors can benefit from his research. Thank you, Gary!

The date of the Fall Meeting and Educational Program was changed for 2016 to the third weekend of October. Larry Everett and Greg Vass are reviewing the feedback and will determine the best date for the meeting in 2017. This year's educational program focused on Cambridge decanters and beverage sets. Lynn Welker led an informative educational program for more than 50 members where he discussed the production and variety of decanters produced by the Cambridge Glass Company. During prohibition, clever marketing strategies were

used by glass companies to promote the sale of "beverage sets" while avoiding a direct reference to alcohol. If you were unable to attend the Fall Meeting, you can view a video of the educational program on the website. I want to thank Greg Vass, Lynn Welker, Larry Everett, Frank Wollenhaupt, and all the members who brought glassware for the educational display making this year's Fall Program an enjoyable event for all.

With the help of many volunteers and the generosity our members, 2016 was a great year for NCC. If you have any suggestions for improving any of NCC's sponsored events, or want to help by volunteering, please email me at westervillesh@hotmail.com. I look forward to your continued support in 2017.

David

David Ray
westervillesh@hotmail.com

NCC members at March, June and October events



Give a Little, Help A Lot!

by Lindy Thaxton

The 2016 season is over for the Museum Gift Shop. We now have the same concern as the last few years, and it is a wonderful concern to have! During both the summer and Dickens Victorian Village seasons, items have been flying off the shelves. With the interest created from Cindy Arent's pictures on Facebook and local newspaper coverage, Cambridge Glass Ornaments have sold extremely well, including shipments around the country.

Ornaments and jewelry are a fantastic fund-raiser for the club, with 100% of the sales price as profit to the NCC. Since 2008, almost \$50,000 has been raised for the club.

To continue this success, we need your help. Please look through your collection for items you can donate to the museum. Popular items for resale include any color items, candy dishes, comports, etched or cut stems, and relish dishes. Most of our visitors to the gift shop are non-Cambridge collectors. They are looking for that perfect gift or for a memento of a special trip.

If you have items that are chipped, scratched or damaged, we can use those too. The team of Susan Everett, Frank Wollenhaupt, Carl Beynon, Cindy Arent, and Lindy Thaxton can turn your damaged



Cambridge Glass into beautiful ornaments and jewelry that someone can treasure forever. For ornaments, we especially appreciate stems with foot chips because we can make 2 ornaments from the bowl and the stem. Twice the profit for half the glass.

So, search through your collection or check out that box of broken pieces you couldn't bare to part with. Bring your finds to the Museum during the March auction, June convention, or any time during regular operating hours. If you won't be able to get to Cambridge this year, please mail your glass to:

NCC
PO Box 416,
Cambridge, OH 43725-0416



We want to thank all members who have donated glass and a special thanks to those who made the extra effort to mail their donations in support of the NCC.

Happy New Year & Thank You for Your Support!

By Cindy Arent

As we wrap up 2016, we look back on the many unforgettable experiences we had throughout the year....meeting new visitors, greeting old friends, meeting NCC members on their first visit to the museum and also the motorcoach groups.

During the Holiday Season (November and December), the National Museum of Cambridge Glass was open on Saturday and Sunday and also during the week for bus groups. However, on Thanksgiving weekend, the Annual Museum Holiday Open House was three day event. This was the first year that Friday was added to the weekend event. All three days were busy, but Friday was the busiest! It was difficult to keep up with the steady stream of visitors throughout the Open House weekend. Everyone was very complimentary.

The Museum also participated in Small Business Saturday sponsored by Cambridge Main Street. We were given canvas bags with the Shop Small logo to pack the many pieces of glass purchased in the gift shop throughout the day.



Neither rain nor snow or dark of night will keep these volunteers from greeting a bus group. (L – R): Sarah Carpenter, Sharon Miller, Lindy Thaxton and Betty Sivard were standing in the rain with smiles to greet this group from PA

This year the National Cambridge Collectors, Inc. received a GAP award from the Cambridge/Guernsey County Visitors & Convention Bureau. Developing and implementing a marketing and advertising program each year, is important for reaching outside of the Cambridge area to let people know why they should visit the museum, come to the March Auction and the June Glass Show & Sale.

This year, a grant was submitted to the VCB in February and we were awarded \$4,220 to be paid after the final report was submitted. In December, Debbie Robinson reviewed the final report and visited the museum on December 8th to present the check.



Debbie Robinson, Executive Director of the Cambridge/Guernsey County Visitors & Convention Bureau, came to the museum to present the \$4,220 Grant Assistance Program check for the 2016 grant to the National Cambridge Collectors, Inc.

We appreciate all that the VCB does to help us with marketing and advertising costs!

The annual Christmas Tea and Tour at the Colonel Taylor Inn was held Sunday, December 4. The Colonel Taylor Inn was “dressed for the holidays” and open to the public. Everyone enjoyed the beautiful Victorian decorations as museum volunteers guided visitors on tours of the three story mansion. Guests were then invited to settle down in one of the Inn’s parlors for tea, scones, cookies and tea sandwiches.

Live piano music, by Elaine Stewart Thompson, created an elegant holiday atmosphere for visitors to relax and enjoy their tea and refreshments. This year the event benefitted the National Museum of Cambridge Glass owned by the National Cambridge Collectors, Inc., a non-profit organization dedicated to preserving the history of The Cambridge Glass Company and educating the public about not only the glassware, but also the artisans who worked at the famous glasshouse.

Thank you all for your continued support and we look forward to seeing you at the museum in 2017!



Elaine Thompson played Christmas music during the Christmas Tea and Tour. The wonderful music set the tone for a lovely afternoon enjoyed by everyone.



Many thanks to Mike Neilson for taking the publicity photo for the museum benefit Tea and Tour. The photo was printed in The Daily Jeffersonian.



The daughters of William C. (Bill) Orme (whose family owned The Cambridge Glass Company) visited the museum in November and are all members of the National Cambridge Collectors, Inc.

Shown in the museum Sample Room, standing in front of the photos of their grandparents. W.L. and Marjorie Orme, are (L-R): Jennifer Orme-Zavaleta, Mindy Orme and Pam Orme Wasylik.

National Cambridge Collectors, Inc.

2017 Benefit Auction

Saturday, March 4, 2017

Pritchard-Laughlin Civic Center

7033 Glenn Highway • US 40, West • Cambridge, Ohio

INFORMATION

Preview at 8:30 a.m. Auction starts at 9:30 a.m.

Craig Connelly, Auctioneer Admission: \$2.00

All glass in the auction is guaranteed to be Cambridge. The Auction Managers have checked all glass carefully for verification and damage. Any piece purchased should be examined immediately by the purchaser, and returned within five items if not as represented. All damages are indicated in this catalog; last minute changes or addenda will be announced by the Auction Managers immediately prior to the auction. If no color is indicated herein, the item is crystal. There are no reserves and no buyer's premiums are charged.

TERMS: Payment is expected in cash the day of the sale; checks will be accepted with proper identification.

CATALOG: Lots will be sold in the order printed herein. A number in parenthesis () at the end of a listing indicates the number of that item available for sale. The auctioneer will announce whether such multiples are being sold individually or as a lot. If multiple items are being sold individually, a winning bidder may take any number available. If the catalog indicates "set," "pair" or a similar term, the lot is sold as such.

ABSENTEE BIDS: Anyone wishing to bid absentee, may do so by mailing their bids to the Auction Committee at the address below. All bids must be received by the end of Thursday prior to the auction to be eligible, so please allow enough time for the postal service to do its thing. **They must contain all the following information:**

- List showing the lots desired and the maximum bid for each lot.
- Valid Credit Card, VISA & MasterCard accepted. The following is required for a proper credit card transaction:
 1. Exact name as it appears on the card
 2. Expiration date
 3. 3-Digit Security Code on the back
 4. Exact address credit card statement is billed to
 5. Phone number
- Address where winning lot(s) are to be shipped to.

Bids will be executed secretly and a winning bidder will pay only the final auction price. If there are multiple absentee bids for the same lot, bidding will commence on the floor at the second highest bid, effectively shutting out all by the highest absentee bidder.

Shipping: Items can be shipped to street addresses only. WE CANNOT SHIP TO P.O. BOXES. If you are the successful bidder, your credit card will be charged as follows: **Final auction price + 5% transaction fee + cost of shipping.**

MAILING ADDRESS: All absentee bids must be mailed to:

NCC Auction Managers
P.O. Box 416
Cambridge, OH 43725

**BIDS MUST BE RECEIVED BY
THURSDAY, MARCH 2, 2017 TO BE ELIGIBLE**

QUARTERLY MEETING: The Quarterly Meeting of the NCC will be held on Friday, March 3 at 7:30 p.m. A preview of the auction glass will be presented. Show & Tell glass is also welcome at the meeting. All are welcome!

For additional copies of the catalog listing as well as detailed information on the entire auction, please visit the website at <http://www.cambridgeglass.org> under **Annual Auction.**

Additional copies of this catalog are included with admission to the auction.

2017 NCC Benefit Auction Listing

- 1 _____ 3400/92 Royal Blue Decanter 32 oz. w/Farber Chrome Holder and #1341 Cordial 1 oz.s (4) (Set) wrong stopper
- 2 _____ 3400 Amethyst Farber Oil & Vinegar
- 3 _____ 3400/34 Forest Green Bowl 9½” 2 handle
- 4 _____ 3500/44 Forest Green Vase 8” Ftd. Urn
- 5 _____ 3400 Pink Farber Salt & Pepper with #3400/177 inserts on Chrome Tray
- 6 _____ 1044 Lite Emerald Swan 10½”, Style I, Signed
- 7 _____ 1043 Lite Emerald Swan 8½”, Style I, Signed
- 8 _____ 1042 Lite Emerald Swan 6½”, Style I, Signed
- 9 _____ 3130 Crystal Cordial 1 oz. Etched Apple Blossom
- 10 _____ 3400/851 Crystal Ice Pail with handle Etched Apple Blossom, Signed
- 11 _____ 581 Amber Puff Box & Cover, 4”
- 12 _____ 3011/9 Pistachio Statuesque 3 oz. Cocktail
- 13 _____ 3011/11 Royal Blue Statuesque 3 oz. Cocktail, Tulip #3126
- 14 _____ 3900/19 Crystal Ftd. Mayo Etched Chantilly
- 15 _____ 312 Crystal 3-Compartment Candy and Cover, 5½” with Silver Knob, Etched Chantilly
- 16 _____ 3011/7 Royal Blue Claret 4½ oz.
- 17 _____ 61 Moonlight Blue Caprice 12½” crimped bowl ft.
- 18 _____ 1066 Crystal Oval Cigarette Holder with Ashtray Foot Gold Encrusted Portia
- 19 _____ 74 Azurite Candlesticks 7” domed (Pair)
- 20 _____ 44 Pearl Mist Seashell 6” ftd. Flower Center Snail
- 21 _____ Crystal Shell 4”, 4 toed Rosebowl
- 22 _____ 730 Lite Emerald Ftd Candy and Cover, Etch #706, Gold Trim
- 23 _____ 1130 Crown Tuscan Vase 12” Ftd. Nautilus
- 24 _____ 278 Crystal Vase made into Lamp, base has been painted Etched Wildflower
- 25 _____ 3400/1240 Peach-blo Bowl 12” Oval Etched Gloria
- 26 _____ 3400/38 Crystal Jug 80 oz. Ball , R.C. Eng 698 Achilles
- 27 _____ 1330 Various Sweet Potato Vases (5) Amber, Royal Blue, Amethyst (Stained), Carmen, Forest Green (Choice)
- 28 _____ SS21 Crown Tuscan Sea Shell Cvd Candy Box 6”, Charleton Décor (Gold Wear)
- 29 _____ 3400/48 Emerald Bowl 13” 4 Ftd. Crimped and P489 Calla Lily Candlesticks, Charleton Decoration, with Lable
- 30 _____ 165 Crystal Arcadia 6” Candy Box & Cover w Cambridge paper label
- 31 _____ Azurite Perfume Lamp, Ebony Enamel Trim, All Original Fittings
- 32 _____ 3011/12 Carmen Statuesque Wine 3 oz.
- 33 _____ 306 Carmen Pristine 6” Candy and Cover, Base Unfinished
- 34 _____ 3011 Crown Tuscan Statuesque 7” Flared Comport
- 35 _____ 3011/25 Amber Ivy Ball, Crystal Statuesque Stem/Foot
- 36 _____ 500/37 Mulberry Comport 7” Mayo, Honeycomb
- 37 _____ 244 Ebony Service Plate 10½”, Rockwell Sterling “Leaping Gazelles & Medallions
- 38 _____ 3400/98 Heatherbloom Cream and Sugar, Ball Jug (Set)
- 39 _____ 1545 Crystal 5 1/2 in. 3-Lite Candelabrum w/#19 2-Lock bobèche & #1 Prisms, Etched Wildflower
- 40 _____ 523 Crystal 1-Bun Geisha, metal collar at bottom, no base
- 41 _____ 3011/13 Forest Green Statuesque Brandy 1 oz. with Satin Stem
- 42 _____ W61 Milk Glass Martha Washington ftd. Sugar and Creamer
- 43 _____ 3797/54 Ebony Cambridge Square 6” Comport
- 44 _____ 65 Ebony Doric Column Candlesticks 9 ½”, Version 2, (Pair)
- 45 _____ 3400/38 Forest Green Ball Jug with Crystal Handle, 80 oz.
- 46 _____ 3400/38 Amethyst Ball Jug, 80 oz.
- 47 _____ Crystal Battleship candy container 1½ oz. - no tin closure, Chip on Smoke Stack
- 48 _____ 2842 Crystal Small revolver candy container 1½ oz. (Indian/horse)
- 49 _____ 703 Peach-blo Flower Arranger, 2 piece (Signed)
- 50 _____ P384 Crystal Pristine 11” Oval Bowl, Rock Crystal Engraved Harvest
- 51 _____ 277 Ebony Vase 9” Ftd. Gold Encrusted Blossomtime
- 52 _____ 668 Ivory Plate 6” with Blue Enamel Encrusted Willow Scene, (RARE)

- 53 ___ 925 Amber Cup and Saucer, After Dinner, Gold Trim Interior, (Signed)
- 54 ___ 2913 Lite Emerald Mt. Vermon Perfume, bruise inside Stopper (RARE)
- 55 ___ 1137 Crystal Flower Holder, Blue Jay 5½"
- 56 ___ 1066 Carmen Ivy Ball
- 57 ___ 1045 Ebony Swan 13", Chip on Tail, Style I, Signed
- 58 ___ 1042 Ebony Swan 6½", Style I, Signed
- 59 ___ 1041 Ebony Swan 4½", Style I, Signed
- 60 ___ 1044 Ebony Swan 10½" Style I, Signed (some stain)
- 61 ___ 1043 Ebony Swan 8½" Style I, Signed
- 62 ___ 88 Peach-blo 5" 3 compartment dish with cover and Lite Emerald Rose Knob in Gold Embossed Metal Basket Holder
- 63 ___ 496 Crystal Pristine Table Architecture 5 Candlesticks
- 64 ___ 3400/1335 Forest Green Vase 12"
- 65 ___ 1238 Crown Tuscan Vase 12" Keyhole , Lustre Finish
- 66 ___ 3900/671 Crystal Ice Bucket Etched Chantilly
- 67 ___ 3500/15 Crystal Individual Sugar and Creamer Etched Wildflower with Gold Trim (Pair)
- 68 ___ 3400 Forest Green Farber Salt & Pepper with #3400/177 inserts on Chrome Tray
- 69 ___ W62 Milk Cream & Sugar (Sugar has paper Label) Martha Washington
- 70 ___ 3011/3 Heather Bloom Saucer Champagne, Optic, Hard to Find
- 71 ___ 3011/13 Crystal Brandy etched Chintz 1 oz., RARE
- 72 ___ 555 Mulberry Plate 7½" Gold Encrusted Etch #708
- 73 ___ 119 Royal Blue Basket 10" tall with Crystal Handle, Signed
- 74 ___ 1402/39 Royal Blue Tally-Ho 2½ oz. Handled Tumbler (Whiskey) and Amber 2½ oz (2)
- 75 ___ 3400 Amethyst Bal Jug Salt and Pepper and 3 oz. Oil (2) in Farber Holders and Tray
- 76 ___ 468 Crystal Comport 6½" Tall Etched Firenze
- 77 ___ Lite Emerald Center handle 3 part Relish Etched Early Wildflower-rim has #861 & 713 Etch.
- 78 ___ W93 Milk Glass Everglade Mug 12 oz.
- 79 ___ 2760 Crystal Electric Lamp (shade has opening in the middle) Nearcut Daisy
- 80 ___ 3400/107 Royal Blue Steins 14 oz. Crystal Handles (4)
- 81 ___ SS35 Crown Tuscan Sea Shell Cvd Cigarette Box, 4 toed, 4½" x 3½", Charleton Décor, No Gold on Base
- 82 ___ 165 Emerald Cascade Box and Cover, Charleton Decoration
- 83 ___ 6 Primrose 6" bowl with green enamel trim, signed with large triangle C
- 84 ___ 2780 Crystal Nearcut Strawberry 2 oz. Wine
- 85 ___ 1529 Pistachio Vase, PinBall, Cambridge Label
- 86 ___ 3500 Crystal Tumblers 10 oz. Ftd. Etched Elaine (4)
- 87 ___ 1044 Amber Swan 10½" Type 1, Signed
- 88 ___ 1128 Crystal Scotty Dog Bookends (Pair)
- 89 ___ 1124 Crystal Pouter Pigeon Bookends
- 90 ___ 278 Peach-blo Vase 11"footed Etched Betty with Gold Encrusted E524 border (Trim wear on Base)
- 91 ___ 226 Helio Candle Stick 10"
- 92 ___ 862 Crystal 8" 4-compartment Relish with silver overlay decoration
- 93 ___ 500/122 Rubina Jug, 50 oz. Block Optic, Extra Glass Inside
- 94 ___ 3011/6 Crystal Statuesque Roemer 5 oz. Optic
- 95 ___ 646 Carmen Candlesticks 5" 1-Light Keyhole (pair)
- 96 ___ 1307 Amber Candlesticks Etched Rose Marie, 3 Lite
- 97 ___ 3400/97 Heatherbloom Ball-Shaped Perfume 2 oz., Etched Portia, Crystal Dauber Stopper
- 98 ___ 1704 Crystal Hat 5", Etched Blossomtime
- 99 ___ 1066/4 Carmen Candy Box and Cover 5-3/8" Blown, Crystal Stem/Foot, flake inside base
- 100 ___ 514 Amber Eagle Flower Frog 5½"
- 101 ___ 3400/646 Gold Krystal Candlesticks 5" Decagon Etched E744 Appleblossom (Pair)
- 102 ___ 3400/144 Royal Blue Cigarette holder, Crystal ashtray foot
- 103 ___ 1402/150 Royal Blue Tally-Ho Tumblers 12 oz. (4)
- 104 ___ 1402/100 Amber Goblet, Tall D/1007-8 Gold Silk Screen
- 105 ___ 1066 Carmen Aurora Sherry 2 oz. (4)
- 106 ___ 3011/40 Carmen Seashell Flower or Fruit Center 10" Flying Lady, Production Grind under Base, Hard to Find

- 107 _____ 199 Ebony 1/2 oz. Atomizer, Gold Décor, (bulb probably replaced and not original)
- 108 _____ 638 Ebony Decagon 6" 3-Lite Candlesticks, Etched #738, (Pair)
- 109 _____ 22 Crystal Everglade Vase 6", Satin Finish
- 110 _____ Various "Stack Away" Ashtray Set, 1 Gold Krystal, 1 Mandrian Gold, 1 Moonlight, 1 Crystal
- 111 _____ 68 Ebony Candlesticks 10", D619 Gold Band Overlay, (Pair) (some gold wear)
- 112 _____ 62 Azurite Comport 7¼" Tall, big chip on foot
- 113 _____ 437 Azurite Candlesticks 9½", (Pair)
- 114 _____ 3675 Crystal Goblets 10 oz. Etched Blossomtime, gold trip on rim and foot (pair)
- 115 _____ 3725 Crystal Sherbets, Tall 6 oz. Etched Wildflower (5)
- 116 _____ 3035 Carmen Cordial 1 oz.
- 117 _____ 3775 Crystal Cordial 1 oz. Etched Chantilly
- 118 _____ 3103 Carmen Cordial 1 oz.
- 119 _____ 3400/38 Gold Krystal Ball Jug 80 oz. Gold Encrusted Portia, Mint
- 120 _____ 270 Ivory Boudoir Lamp, Gold Trim, some wear, Original Fittings
- 121 _____ 162 Crystal Cabaret Plate 10½" Etched Blossomtime, Gold Trim
- 122 _____ P575 Crown Tuscan Cornucopia Vases 9" Gold Encrusted Portia (2) (Mint)
- 123 _____ 45 Ivory Comport 9½" Enamel Mottled Background and Floral Décor
- 124 _____ 513 Mocha Draped Lady 13" Flower Frog
- 125 _____ 3500/17 Crystal 12" Ftd. Bowl, Rock Crystal Engraved Adonis
- 126 _____ 3500/74 Crown Tuscan Rams Head 4" Candlesticks (Pair)
- 127 _____ 447 Primrose 6¾" Mayo Comport, Gold Encrusted and Primrose Ladle
- 128 _____ 244 Crystal Service Plate 10½" (Dinner) Nanking Green Enamel Willow Scene, Gold Trim
- 129 _____ 103 Peach-blo Stratford Urn 2 Handled Salt, Signed
- 130 _____ 951 Peach-blo Toast Dish 9" Etched Cleo and Lite Emerald Cover with 732 Etching
- 131 _____ 168 Primrose Sandwich Tray 10" Center Handled
- 132 _____ 623/8701 Lite Emerald Bridge Set with 8701 Tumblers 1 with flake on rim, Crackle (5-piece set)
- 133 _____ 1043 Gold Krystal Swan 8½", Style I, Signed
- 134 _____ 1043 Milk Glass Swan 8½", Style III
- 135 _____ 1042 Milk Glass Swan 6½", Style III
- 136 _____ 64 Heatherbloom Mt. Vernon 7" Vase
- 137 _____ 1338 Emerald Caprice 3 Lite Candlesticks, 6", (Pair)
- 138 _____ 509 Lite Emerald Two Kid Flower Frog 8¾"
- 139 _____ 509 Pink Satin Two Kid Flower Frog 8¾"
- 140 _____ 512 Lite Emerald Flower Frog, Rose Lady
- 141 _____ 513 Bluebell Flower Frog, 13" Draped Lady, #754 Decagon Bowl, 4" Candle sticks #627 (Set)
- 142 _____ 646 Crystal Candlesticks 5" Etched Candlelight (Pair)
- 143 _____ 3450 Royal Blue Nautilus Cream & Sugar
- 144 _____ 1402/33 Amethyst Tally-Ho Cream & Sugar
- 145 _____ 3400/152 Crystal Doulton Jug 76 oz. Etched Diane
- 146 _____ 3011/13 Mocha Brandy 1 oz.
- 147 _____ 1327 Pistachio Brandy 1 oz.
- 148 _____ 16 Crown Tuscan Seashell Cmpt 7", Rockwell Sterling Sea Horse Décor, signed Rockwell
- 149 _____ 3900/65 Crystal Bowl 12" Oval Footed Etched Chantilly
- 150 _____ 32 Azurite Bowl 10½" Gold Encrusted Etch
- 151 _____ 22 Royal Blue Mt. Vernon 3 oz. Ftd. Tumbler and Carmen 3 oz. Ftd. Tumbler (2)
- 152 _____ 3500/42 Crown Tuscan Urn and Cover 12"
- 153 _____ 134 Crystal Virginian Cake Salver 10½"
- 154 _____ 3900/576 Crystal Cornucopia Vase Etched Chantilly with Sterling Base, Ruffled Top
- 155 _____ 3011/13 Royal Blue Statuesque Brandy 1 oz with Crystal Stem
- 156 _____ 3011/9 Royal Blue Statuesque Cocktail 3 oz. with Crystal Stem
- 157 _____ 22 Carmen Mt. Vernon 3 oz. Ftd. Tumbler with Sterling decoration signed Rockwell
- 158 _____ 2760 Crystal Nearcut Daisy ftd. Tankard and (2) Tumblers with Red Flashing Ft bruise on Pitcher
- 159 _____ 1402/77 Crystal Tally Ho 13" footed punch bowl with 1402/78 footed punch cups (18), minor scratches
- 160 _____ P130 Crystal Torte Plate, 14" blown, Etched Rose Point (Rare)

- 161 _____ 3400/55 Crystal Cream Soup 2 handled Etched Rose Point (Hard to Find)
- 162 _____ 3121 Crystal Tumbler 3 oz. Ftd. Etched Rose Point
- 163 _____ 1402/89 Crystal Tally-Ho 6" 2 handled Nappy Etched Rose Point
- 164 _____ P728 Crystal Ash Tray (5) Etched Rose Point (Set)
- 165 _____ 3109 Crystal Champagne 6 oz. Hollow Stem Etched Rose Point, Camb. Label (RARE)
- 166 _____ P163 Crystal Crecent Salad Plate 8" Etched Rose Point (RARE)
- 167 _____ 3900/118 Crystal Jug 32 oz. Etched Rose Point (Hard to Find)
- 168 _____ 3500/117 Crystal Tumbler 5 oz Barrel Etched Rose Point (6)
- 169 _____ 3500/37 Crystal Comport 7" X 8" 2 handled Comport Etched Rose Point
- 170 _____ 274 Crown Tuscan Vase 10" ftd. Bud Gold Encrusted Rose Point, Cambridge Lable
- 171 _____ P575 Crystal Cornicopia Vase 9" Etched Rose Point
- 172 _____ 427 Crystal Pristine 10" Bowl with Wallace Sterling Foot Etched Rose Point
- 173 _____ 3900/100 Crystal Oil Cruet 6 oz. and Stopper Etched Rose Point
- 174 _____ 3105 Carmen Wine, Pressed Rose Point
- 175 _____ 3105 Carmen Pressed Rose Point 5 oz. Ftd. Tumbler
- 176 _____ 3500/16 Crystal Bowl 11" Ftd. Etched Rose Point
- 177 _____ 3105 Amethyst Pressed Rose Point Cordial 1 oz.
- 178 _____ 233 Crystal Vase 9½" Footed , Gold Encrusted Rose Point Etch
- 179 _____ 3105 Amber/Crystal Pressed Rose Point Claret/Wine, (Rim repair)
- 180 _____ 3400/6 Crystal Cheese & Cracker 11½" Etched Rose Point
- 181 _____ 7966 Crystal Cordial 1 oz.. Etched Rose Point
- 182 _____ 3400/4 Crystal Rose Point 12" 4-toed Bowl with #1268 - 6" 2-lite candelabrum with Bobeches etched Rose Point (Set)
- 183 _____ 3600/17 Crystal Rose Point cups (6)
- 184 _____ Crystal Graduate Laboratory Beaker 250 ml footed (Signed)
- 185 _____ 680 Lite Emerald Compact and Cover, Chip inside Lid
- 186 _____ 3011/9 Royal Blue Statuesque Cocktail 3 oz.
- 187 _____ 3400/38 Crystal Jug, Ball Shape 80 oz. with Ebony Handle (neck crack by handle)
- 188 _____ 3400/638 Lite Emerald Decagon 3-Lite Candlesticks, Satin (Pair)
- 189 _____ 1358 Crystal Caprice 3-Lite Candelabra with Bobeches and Prisims
- 190 _____ 2 Amber Rooster Muddler 5"
- 191 _____ 1955 Sunset Tumbler 14 oz. (2)
- 192 _____ 3011/9 Moonlight Statuesque Cocktail 3oz.
- 193 _____ 3500/109 Forest Green Rams Head 11" 4-Ftd. Refectory Bowl, Cambridge Label
- 194 _____ 3500/37 Crystal Comport 7" Tall Etched Minerva with Gold Trim
- 195 _____ 3130 Amber Cordial 1 oz., Etched Apple Blossom
- 196 _____ 3035 Amethyst C190ordial 1 oz., Crystal Stem/Foot
- 197 _____ 3500 Crystal Cordial 1 oz., Etched Chintz
- 198 _____ 3077 Lite Emerald Cordial 1 oz., Etched Cleo
- 199 _____ 3500/90 Amber Torchere with Crystal Ash Tray Foot 6"
- 200 _____ W90 Milk Glass Caprice 3 oz. Oil Bottle and Stopper
- 201 _____ 1337 Amethyst Cigarette Holder Crystal with Ash Tray Foot
- 202 _____ 3129 Crystal Hollow Stem 4 oz. Sparkling Burgundy E765 "Vichy"
- 203 _____ 244 Cobalt Blue I Service Plate 10½" Gold Encrusted E707 (Scratched)
- 204 _____ 1005 Peach-blo Terrarium 5½" E732
- 205 _____ 851 Lite Emerald Ice Pail, handled with Tongs Imperial Hunt Scene E718 (Lt Scratches)
- 206 _____ 3011/9 Amber Statuesque 3 oz. Cocktail with Frosted Stem and Foot
- 207 _____ 925 Ebony After Dinner Cup & Saucer, Gold Trim, 3 Sets (Set), (minor gold wear)
- 208 _____ SS110 Moonstone Sea Shell 4 1/2 oz. Sea Food Cocktails (4), (Set)
- 209 _____ 968 Crystal 2-Pc. Cocktail Icers, Etched #731, Decagon Inserts, (Pair) 1 chip
- 210 _____ 3700 Crystal Cordial 1 oz. Optic
- 211 _____ 27 Crystal Arcadia Sugar and Creamer (Pair)
- 212 _____ 13 Helio Bowl 11", Scratched
- 213 _____ 96 Azurite Candy Jar & Cover ½ lb.
- 214 _____ 3500 Crystal Oyster Cocktails 4½ oz. Etched Elaine (6)

- 215 _____ 7801 Crystal Sherry 2 oz. Etched Elaine, (Pair)
- 216 _____ 797 Crystal Flip Vase, 8” Tumbler Shaped Etched Wildflower
- 217 _____ 1309 Crystal Vase 5” Etched Apple Blossom, gold trim on rim
- 218 _____ 1263 Crystal French Dressing Bottle Etched “Ketchup” (cloudy in base)
- 219 _____ 3400/92 Amber Ball Decanter and tumblers (6) (Set)
- 220 _____ 1448 Amber Vase 10” Aero Optic
- 221 _____ 550 Lite Emerald Pitcher 48 oz. with 10 oz.. Wide Optic Mugs (6), Signed
- 222 _____ 1337 Carmen Cigarette Holder with Ashtray Foot, (chip)
- 223 _____ 508 Peach-blo Mandolin Lady Figure Flower Frog
- 224 _____ 3500/41 Crystal Urn Etched 10” Elaine - Version #1
- 225 _____ 3400/135 Crystal Bowl 9” Etched Apple Blossom
- 226 _____ 1238 Crystal Vase 12” Ftd., Keyhole Etched Portia
- 227 _____ 870 Peach-blo Sandwich Tray 11 inch Handled Etched 740 - Decagon Line
- 228 _____ 1263 Crystal French Dressing Bottles - Charleton Decoration (2)
- 229 _____ 3400/4 Crystal 12” Bowl, Flared 4 Ftd. With cutting #621 (Signed)
- 230 _____ 3500/37 Crystal Comport 7” Etched Elaine
- 231 _____ 3400/851 Crystal Ice Bucket with Chrome Handle Etched Diane (signed)
- 232 _____ 495 Crystal Candlesticks Pristine 3¾” (Pair), & #492 - 1¾” Candlestick, (1)
- 233 _____ 1504 Crystal Flower Circle 5½” & #1505 - 6” Flower Bars, (Set) (4) bars
- 234 _____ 2651 Crystal Near Cut Feather 7 oz. Goblet, Gold Edge (some gold wear)
- 235 _____ 2651 Crystal Near Cut Feather Sundae, Marigold Carnival Treatment
- 236 _____ 2699/215 Emerald Buzz Saw Tall Tankard Jug, Carnival Treatment & 2 8 oz. Tumblers, (Set), Signed
- 237 _____ 487 Lite Emerald Cheese and Crackers 12” Oval Gold Trim
- 238 _____ 3500 Forest Green Relish, Gadroon Farber 2 part and 3 part divided relish (2) (Lot)
- 239 _____ 533 Crystal 3-Pc. Mayonnaise Set, Etched Chintz #3
- 240 _____ 3200 Carmen Near Cut 12” Punch Bowl & Foot, & Hld. Punch Cups (10), Cut Wild Rose (Set) (bowl has large chip on bottom) small chip top of base
- 241 _____ 2630/41 Crystal Near Cut Plymouth Squat Basket, Reeded Hld. Signed
- 242 _____ 582 Lite Emerald 4” Puff Box & Cover
- 243 _____ 1402/94 Royal Blue Celery 12” with Platinum Top Edge, Tally-Ho
- 244 _____ 2660 Crystal Near Cut Wheat Sheaf Tall Decanter or 6 oz. Cologne with original stopper
- 245 _____ 1324 Crystal Decanter 22 oz. Golf Ball Stopper with D986 Enameled birds: Wise, Otherwise, Theorize, Harmonize, Green enamel lines
- 246 _____ 499 Crystal Virginian Candlestick with One Prism (Pair) Chip on Prism
- 247 _____ 3104 Gold Krystol Hock 5 oz. 8½” Tall with Crystal Stem and Foot, Unusual
- 248 _____ 3011 Pink Statuesque Cupped Comport 7” , Short Crystal Stem
- 249 _____ 3400/127 Crystal Tumblers, 2½ oz. Handled, Etched Portia (4)
- 250 _____ 3400/70 Pink Cranberry Dish, 3½” , Etched Gloria
- 251 _____ 496, 497 Tahoe Blue Tumblers – (1)-#496 12-oz. Tall Joe, (1)-#497 9-oz
- 252 _____ 585 Pink Perfume ½-oz. with Beehive Stopper
- 253 _____ 319/B/2 Mandarin Gold Georgian Basket, Oval Shape
- 254 _____ 3060 Mulberry Goblets 9 oz. Etched 704 with Gold Trim (2)
- 255 _____ 124 Pink Jug 68 oz. with Lid Etched 2019 Waterlily (Unidentified)
- 256 _____ 1623 Crystal Cornucopia Vase 10” Pristine Etched Diane, Unusual
- 257 _____ 1 Moonlight Caprice Goblets 10 oz. (4)
- 258 _____ 66A Crystal Caprice Banana Dish
- 259 _____ 170 Crystal Caprice 6½” Club Dish
- 260 _____ 1563 Crystal Cambridge Arms, 4 Candle Arms (2) 1633 5” Peg Vases (3) 1536 5” Peg Nappy, 628 Candle Base (Set)
- 261 _____ 107 Lite Emerald Jug and Cover, 78 oz. Etched Martha (Chip under Lid)
- 262 _____ 3121 Crystal 1 oz brandy, etched Wildflower
- 263 _____ 3110 Crystal Goblet with Lite Emerald stem (2)
- 264 _____ 3011/9 Amethyst Statuesque Cocktail 3 oz.
- 265 _____ 854 Lite Emerald Keg Ice Bucket, Signed
- 266 _____ 3400 Crystal Wild Flower 6” Comport
- 267 _____ 10 & 65 Jade Special Article bowl 10” and Doric Column Candlesticks (Set)
- 268 _____ 39 & 3 Crystal Everglade 13” oval bowl and Everglade Two-lite Candlesticks (Set)

- 269 _____ Royal Blue Rum Pot and 3 tumblers in Forman Brothers twist in
270 _____ W109 Milk Glass Dolphin Candlesticks 8½” (2)
271 _____ 1314 Heatherbloom Ashtray 3” with Crystal Stem and Foot #1066
272 _____ 3500 Carmen Gadroon Wines with Crystal Stem and Foot (1), Royal Blue (1)
273 _____ 3900/52 Crystal Butter ¼ lb. with cover Etched Wildflower
274 _____ 3500/78 Crystal Candy Box 6” with lid, Rams Head Etched Diane (slight lavender tinge)
275 _____ 3400/91 Lite Emerald Relish 3-part with Statuesque Chrome base
276 _____ 3400/52 Crystal 5½” Butter with Lid Etched Portia (Signed)
277 _____ 1040 Peach-blo Swan 3” Style II, Signed
278 _____ 1040 Lite Emerald Swan 3” Style I, Signed
279 _____ 1402/78 Carmen Tally-Ho 6 oz. Mug and 3400/56 Carmen Fruit Saucer 4½” (Lot)
280 _____ 581 Mulberry Powder Jar
281 _____ W124 Milk Glass Caprice Ball Vase 4½” with Cambridge Label
282 _____ 3400/38 Royal Blue Ball Jug 80 oz. (Scratches)
283 _____ 1238 Crystal Vase 12” Gold Encrusted Wildflower, Keyhole (Gold wear)
284 _____ 3600/209 Crystal Relish 8½” 3-part Etched Chantilly
285 _____ 3400/118 Amber Decanter 35 oz. with Crystal Stopper
286 _____ 22 Moonlight Blue Caprice 8½” plate (10); several with minor knife marks.
287 _____ 3143/38 Crystal Jug 80 oz. 10 oz. Tumblers (4) (Set)
288 _____ 2351 Crystal Near Cut Oil Bottle, thistle, Stopper Chips, Signed
289 _____ 3011 Smoke Statuesque Comport, Cupped, Short Stem with Cambridge Label
290 _____ 39 Willow Blue Everglade Oval Plate 14½” ftd.
291 _____ 3011 Royal Blue Statuesque Cigarette Holder with Ash Tray Foot
292 _____ 3011 Carmen Statuesque Cigarette Box with Carmen Lid
293 _____ 3011 Carmen Statuesque Ashtray
294 _____ 3011 Crystal Statuesque Cigarette Box with Crystal Lid Etched Diane, RARE
295 _____ 17 Crystal Caprice Alpine Cup and Saucer (3 sets)
296 _____ 1307 Crystal Candlesticks 3-lite, short stem (Pair) Cambridge Label
297 _____ 3500 Crystal Goblets 10 oz. with Rock Crystal Engraved #720 “Adonis” (2)
298 _____ 94 Ebony Sweet Pea Vase with Gold Encrusted band 8”
299 _____ 555 Peach-blo Plates 8” Gold Encrusted Imperial Hunt, signed (4)
300 _____ 81 Crystal Caprice 11” 4 Ftd. Bowl, Heavy Silver Overlay Floral
301 _____ 3797/100 Crystal Cambridge Square 4½ oz. Oil and Stopper (nick)
302 _____ 120 Moonlight Blue Caprice 6¾” 2 part Relish
303 _____ 300 LaRosa Caprice 3 oz. Wine
304 _____ 1043 Peach-blo Swan 8½” Style I, Signed
305 _____ 518 Pink Frosted Flower Frog, Draped Lady, 8”
306 _____ 849 Pink Frosted Flower Frog Oval base Draped Lady, 8”
307 _____ 1114 Crystal Flower Frog, Bashful Charlotte 6½”
308 _____ 1238 Crystal Vase 12” Keyhole Etched Gold Encrusted Wildflower
309 _____ SS42 Forest Green Seashell Flower Center 9” (Snail)
310 _____ 1957/121 Carmen Sonata Candlesticks (Pair)
311 _____ 2766 Carnival Nappy 9” Carnival Green Strawberry pattern Nearcut, Crimped
312 _____ 556 Peach-blo Round plates 8” with #703 Florentine Border and center Medallion (6) (1 scratched)
313 _____ 168 Crystal Asparagus Plate 8½” Martha
314 _____ 1043 Mandarin Gold Swan 8½”, Style III
315 _____ 1041 Peach-blo Swan 4½”, Style I, Signed
316 _____ 1043 Emerald Swan 8½”, Style III
317 _____ 1095 Lite Emerald Sugar and Cream Set, Etched Cleo, Decagon Line (3-piece)
318 _____ 1236 Crown Tuscan Ivy Ball 8”, Keyhole
319 _____ 3051 Crystal Tumbler, Narrow Optic, E731 Rosalie
320 _____ 3900/41 Crystal Cream & Sugar Etched Chantilly
321 _____ 3900/166 Crystal Plate, 14” with Rolled Edge Etched Wildflower, Minor Scratches
322 _____ 1043 Crystal Swan 8½” Style III

- 323 _____ 1041 Crystal Swan 4½” Style III
- 324 _____ 98 Lite Emerald Candy Box 5” 3-compartment and Version 2 Cover
- 325 _____ 428 Amber Pickle, Oval 8½” Etched Cleo (2), Signed
- 326 _____ 638 Crystal Candlestick 3-lite Cut Candlelight
- 327 _____ 278 Crystal Vase 11” Footed Etched Wildflower
- 328 _____ 1322 Carmen Cocktails 3 oz. with Crystal stems (2)
- 329 _____ 3900/166 Crystal Torte Plate 14½” Etched Chantilly
- 330 _____ 933 Amber Bowl 12¾ with Etch #739, Signed
- 331 _____ 1233 Royal Blue/Cry Vase 9½”, Keyhole
- 332 _____ 3500/90 Carmen Torchere with Crystal Ash Tray Foot 6”
- 333 _____ 3115 Peach-blo Cocktail 3½ oz. Etched Cleo with Crystal stem & Ft. (5), (Rims Repaired)
- 334 _____ 2653 Crystal Oil Bottle 8 oz. Ribbon, (Chip on Stopper)
- 335 _____ 851 Lite Emerald Ice Bucket, Decagon Etched Cleo, Signed
- 336 _____ 143 Amber Wetherford 4” Candy Box & Cover
- 337 _____ 315 Amber Decanter 28 oz.
- 338 _____ Azurite Perfume Lamps, Black Enamel Lines Décor, (Pair) (no bases), Chip inside 1
- 339 _____ 57/609 Crystal Caprice 3-Pc. Salad Set, 10” Salad Bowl & Salad Fork & Spoon
- 340 _____ 7801 Crystal Tumbler 10 oz. ftd. Etched Martha
- 341 _____ 31 Primrose 9” Bowl, Black Enamel Trim, Signed
- 342 _____ 63 Azurite 6” Tall Comport
- 343 _____ 250 Ivory 7 1/2” Low Ftd. Comport
- 344 _____ 3011/1 Crystal Statuesque Banquet Goblet, Optic
- 345 _____ 1314 Crystal 1066 Ash Tray 3” Footed Etched Diane
- 346 _____ 3051 Rubina Goblet 9 oz. narrow Optic, Good Color
- 347 _____ 1630 Rubina Tumbler 12 oz. Optic, Good Color
- 348 _____ 633 Crystal Epergne 3-lite 1-307 Base 5” Etched Wildflower, 1-2Vase Epergne Arm, 2-7¾” Peg Vases, Set decorated
Gold edges and lines, No Bobeche
- 349 _____ 3797/40 Ebon Cigarette Holder, Cambridge Square
- 350 _____ 3011/13 Odd Green Statuesque Brandy 1 oz. Satin Stem
- 351 _____ 1956-5 Moonlight Blue Hambone Ash Tray 8”
- 352 _____ 3797/40 Crystal Smokers Sets, (2) 1 with Gold Encrusted Cigarette w/Gold Trim, Camb. Square
- 353 _____ SS10 Crown Tuscan Comport with Gardenia Charleton Decoration, 5” Seashell Nude, Charleton Labels
- 354 _____ SS66 Crown Tuscan Candlesticks 4” Seashell (Pair)
- 355 _____ 3011/7 Forest Green Statuesque Claret 4½ oz.
- 356 _____ 3011/7 Amethyst Statuesque Claret 4½ oz.
- 357 _____ 3011/3 Royal Blue Saucer Champagne, Crystal Statuesque Stem/Foot
- 358 _____ Topaz Top Hat Ashtrays – (1)-Topaz, (1) Willow Blue, **Choice**
- 359 _____ 3121/3 Crystal Candy Box and Cover 5-3/8” Blown , Etched Rose Point
- 360 _____ 2800/114 Crystal Community 9½” 3-Legged Vase
- 361 _____ 3116 Crystal Water Goblets 10 oz. RC Lucia (6)
- 362 _____ 299 Lite Emerald Candy Box and Lid 5” 3-Ftd Etched 704
- 363 _____ 3700 Crystal Goblets RC 1004 Montrose 9 oz. (6)
- 364 _____ 3900/138 Crystal Candy Box and Cover Etched Chantilly
- 365 _____ 3085 Pink Ftd. Tumbler 10 oz. with Lite Emerald Foot Etched Imperial Hunt
- 366 _____ 1250 Ebony Satin Vase 6” Everglade with Painted Decoration (Some wear on decoration)
- 367 _____ 165 Crystal Caprice 6 “ Candy Box and Cover
- 368 _____ 53 Crystal Caprice 10 1/2” Bowl 4 Toed, Crimped
- 369 _____ 109 Lite Emerald Dolphin Candlestick with Sponge Acid Finish (1), Candle Cup badly Cracked
- 370 _____ 157 Crystal Deviled Egg plate, Martha (Scratched)
- 371 _____ 3400/8 Heatherbloom Sandwich Plate 11½” handled Etched Diane (signed) light scratches
- 372 _____ 1402/100 Carmen Tally Ho Wine with Gold #D1007-8 Decoration, Crystal stem and foot
- 373 _____ Amethyst Drink set, 6 oz Glasses Farber (6) Czech Muddlers (6) Chrome tray (Set)
- 374 _____ 1303 Crystal Vase Etched Lorna with Red Enamel Trim 7”, (Unusual)
- 375 _____ 25 Rubina Honey Comb Bowl 10” (Signed), No Blue
- 376 _____ W123 Milk Glass Cornucopia 3” and Mt. Vernon 1 oz. Cordial

- 377 _____ Forest Green Farber 2 handled Candy, Cocktail and Gadroon 2 part Relish (Lot)
- 378 _____ 102 Crown Tuscan Mt. Vernon 2 handled Urn Salt (2) one Crown Tuscan and one Mocha (both signed)
- 379 _____ 1402/23 Crystal Tally-Ho 8" Plate, Orange and Ebony Enamel #D1007
- 380 _____ 1239 Crystal Vase 14" Keyhole Etched Gloria
- 381 _____ 1299 Crystal Keyhole 12" Vase, RCE 639
- 382 _____ 3400 Crystal Keyhole 9½" Fruit Bowl etched Cleo
- 383 _____ 3400 Heatherbloom Keyhole Compote 7" Tall, etched Lorna
- 384 _____ SS42 Crown Tuscan Sea Shell Flower Center 9"
- 385 _____ Crystal Game Set, 10 oz. Ftd. Tumblers
- 386 _____ 512 Lite Emerald Rose Lady Flower Frog
- 387 _____ 518 Mocha Draped Lady 8½" Flower Frog
- 388 _____ 3400/38 Carmen 80 oz. Ball Jug and Tumblers 12 oz. (8) (Set)
- 389 _____ 1949 Original Catalog
- 390 _____ 1956 Original Catalog
- 391 _____ Box Degenhart Paperweight Tools
- 392 _____ 638 Peach-blo Candelabrum 6" 3-lite , Decagon base (pair)
- 393 _____ 14 Azurite Bowl 10" Shallow
- 394 _____ 3500/90 Amethyst Cigarette Holder or Footed Torchere Cup with Ash Tray Foot
- 395 _____ 1066 Amethyst Goblet 11 oz. (6)
- 396 _____ 1900 Amethyst Farber Cordial Set (6) on Farber Chrome Tray (handle corroded)
- 397 _____ 1402/52 Amber Tally-Ho Ice Pail with Chrome Plated Handle and Holder
- 398 _____ 52 Crystal Arcadia Bowl 9" ftd.
- 399 _____ 36 Amber Everglade Cream Pitcher
- 400 _____ Amethyst Farber Cocktail Set, 3 oz. cocktail (5) 3 Pint shaker (bakelite and chrome)
- 401 _____ 207/213 Crystal Caprice 5-piece Cigarette Set in White Display Box
- 402 _____ Crystal Chesterfield Variant 13" 2 pc. Punchbowl, 9½" tall, Base signed Nearcut
- 403 _____ 680 Topaz Dresser Compact
- 404 _____ 2658 Carnival Marigold Toy Mug 4 Oz., signed Nearcut
- 405 _____ Azurite Hat, 1922 Cambridge Lodge Advertising
- 406 _____ 1239 Forest Green Vase 14" ftd., Keyhole (Scratches on Base)
- 407 _____ 135 Lite Emerald Cheese and Cracker Etch #714 (Set) Scratches on Underplate
- 408 _____ 29 Ebony Bowl 12" Gold Seaweed & Gold Trim, Iridescence, Gold Worn
- 409 _____ 3400/4 Crystal Bowl 12" 4 ftd Etched Wildflower
- 410 _____ 3400/44 Crystal Sugar and Creamer, Etched Candlelight (Pair)
- 411 _____ 68 Azurite Candlesticks 10"
- 412 _____ 1357 Crystal Epergne (#1437 Arm (nicks on 1 Arm), #2355 Vases (2) (Pair)
- 413 _____ 54 Azurite Bowl 7" Ftd. Gold Encrusted #519 (Redone), Scratched
- 414 _____ 3500/67 Crystal Relish Set 6-Piece , (Silver Plated Tray)
- 415 _____ 3500/3 Crystal Bread & Butter Plates 6" RCE Croesus (7)
- 416 _____ 3500/167 Crystal Salad Plates 7½" RCE Croesus (5)
- 417 _____ 3500/8 Crystal Dessert Plates 8½" RCE Croesus (8)
- 418 _____ 3400/63 Crystal Dinner Plates 9½" RCE Croesus (2)
- 419 _____ 3500/1 Crystal Cups (3) & Saucers RCE Croesus (5)
- 420 _____ 66 Mandarin Gold Caprice 4 Ftd. Crimped Bowl 13"
- 421 _____ 3600/158 Forest Green Artichoke Plate
- 422 _____ 1379 Amber Decanter 26 oz. with #1378 2½ oz. Tumblers (4), Bruise on Stopper, repair on Rim
- 423 _____ 385 Amber 3 compartment Relish 8½" Etched Cleo
- 424 _____ 1382 Amber Square Decanter 14 oz. with Crystal Stopper
- 425 _____ 30 LaRosa Caprice Cabaret Plate 16"
- 426 _____ 1956/1 Smoke Ash Tray 10" (2) one with 2 small scratches in bottom
- 427 _____ 9 Crystal Mount Vernon 1 pound candy jar and cover 8" tall with Acorn knob
- 428 _____ 1263 Crystal French dressing bottle Martha Washington with spade stopper
- 429 _____ 1570 Crystal Cheese Preserver, Lg. size, Chips
- 430 _____ 496 Forest Green Tall Joe Forest Green and Gold (2) Repaired, Zombi Decals

NCC Events

**2017 NCC Auction
Saturday March 4, 2017**

**2017 NCC Convention
June 22-24, 2017**

New Member Benefit

Each NCC household is allowed one free 20-word classified ad in the Crystal Ball per calendar year as part of their membership. This can be a "For Sale" or "Wanted" type of classified ad. Submit your ad by email to editor@cambridgeglass.org

CLASSIFIEDS

Waiting for yours!

Recent Finds



3400/4, 12 in. 4-Toed Bowl,
Gold Encrusted Elaine

Glass Shows

January 21-22, 2017

Cartersville Looking Glass Show/Sale
Cartersville Civic Center
Cartersville, GA 30120
<http://www.meyersshows.com/cartersville.php>

January 28-29, 2017

Sanlando Depression Glass Show & Sale
Sanford Civic Center
Sanford, FL 32771
<http://sanlandodepressionglassshow.com/>

January 28-29, 2017

Portland's "Rain of Glass"
34th Annual Glass, Antiques & Collectibles Show and Sale
Washington County Fairgrounds
Hillsboro, OR
<http://www.rainofglass.com>

February 4-5, 2017

American Glass, Pottery, Dinnerware Show & Sale
Emma Lou Olson Civic Center
Pompano Beach, FL 33060
<http://www.sfdgc.com>

February 4-5, 2017

International Depression Glass Club
China, Glass & Pottery Show & Sale
McClellan Conference Center
Sacramento, CA
<http://www.idgc.org/showcard.php>

February 17-19, 2017

The Houston Glass Show & Best Little Antique Show in Texas
Fort Bend County Fairgrounds
Rosenberg, TX 77471
<http://www.maxmillerantiques.com>

February 25, 2017

Green River Depression Era Glass Club
40th Annual Green River Glass Show & Sale
Kent, WA
kayswede@msn.com

February 25-26, 2017

Arkansas Glasshoppers 31st Annual
Depression Era Glass Show & Sale
Hall of Industry - State Fairgrounds
Little Rock, AR
<http://www.arglasshoppers.org/>

"You'll see more glass when you walk into a glass show than in any online auction. Attend a show and enjoy the beauty."

Welcome to the eBay Report. This column features Cambridge glass items that sold on eBay circa early November to mid-December, 2016. Selling prices have been rounded to the nearest dollar. Here we go:

Statuesque (Nude Stem) Line

A cupped comport with late Pink (not 1930s Peach Blo) bowl brought \$142. These can't be common. A 7-1/2 inch cocktail with Smoke bowl and Crackle finish brought \$86 with noted repairs



to the base. The same seller offered another one, with late Pink bowl and also Crackle finish. It brought \$242. (An identical one with a chip on the foot garnered only \$47.)



Animals and Figural items

A tall Draped Lady figural flower holder in Emerald Green with the six-lobed base brought \$125 on a Buy It Now.

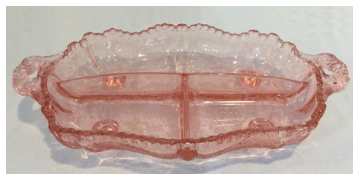
A flower center (better known as the "Flying Nude") bowl in Amber came in for a landing at \$406. A Melon Boy figural flower frog in Emerald Green sold for \$342.



Etched Tableware and Stemware

A pair of #1066 low footed goblets with Heatherbloom bowls and Diane etching sold for \$139.

A #3400/64 12 inch three-part relish with Minerva etching brought the opening bid of \$30. Hel-LO??? It wasn't crystal; it was Peach Blo. Some of you were asleep at the wheel when that auction was closing, but the winning bidder is grinning from ear to ear.



A late-period #P-130 thin-blown 14 inch torte plate

etched Rose Point sold for \$148.

An "extremely rare" (seller's words, not mine) #174 Tally Ho syrup etched Lorna brought \$38. No sooner did it sell than, lickety-split, another seller listed one for \$45 Buy It Now. It remains unsold as of this writing.



Okay, so this piece is not actually *etched*, but a pressed stem Rose Point goblet with Carmen bowl brought only the opening bid of \$35. What happened to the market for this ware? It used to be hot. A pair of pressed stem Rose Point sherbets with Amber bowl sold for \$79 on a Buy It Now.



Enamel, Gold and Silver Decorations

A #532 comport in Ebony with gold encrusted Blossom Time etch withered on its stem, bringing a surprisingly low \$69.

Remember the probably-Fostoria ice bucket in crystal satin with a silver overlay of swans and cattails that was paired with a "matching" Cambridge ball jug in an auction I reported on in November? An identical ice bucket was offered first at \$150, then relisted at \$110, at which price it sold. I wonder if the buyer of the "set" was a Cambridge purist who decided to offload the non-Cambridge half of the set?



A Gadroon covered urn with gold encrusted Rose Point etching sold for \$285. Seller measured it at 11 inches high, but Cambridge lists a #3500/41 at 10 inches, and a 3500/42 at 12 inches. Hmm.

A #3035 goblet with Carmen bowl and gold encrusted Portia etch sold for \$92. It might have brought more, had it not had a rim nick. The Seller included a photograph of the stem next to a ruler showing this to be 8 1/4" tall, so it must be the water goblet. A different seller offered



a #3400/62 8-1/2 inch salad plate in Carmen with gold encrusted Diane etch, and it brought \$291.

Just because someone says it's Cambridge, doesn't make it so. A 12-1/4 inch vase in a cobalt blue color with a silver overlay and enamel parrot decoration, signed Rockwell, was offered as Cambridge, but I don't believe this attribution. Does anyone care to suggest a Cambridge shape number for it? Whoever made the glass, it brought \$204.



A #3400/38 ball jug in solid Royal Blue with a National Silver Deposit Ware decoration of flowers, leaves and fruit brought a somewhat surprising \$420. This was not the prettiest silver decoration I've ever seen, but perhaps the fact that it sported TWO original factory labels (one advising the buyer not to use polish on the silver) helped it reach that price level.

This month's Cambridge glass achiever was the #1402/51 Tally Ho 15 inch cocktail shaker in Carmen with crystal foot and handle, gold decorated #1007, which finally shook out at \$676.



Miscellaneous

A #710 pen tray in Peach Blo sold for \$85 on Buy It Now. A Modern line footed covered candy in Smoke with original label brought \$50.

A #46 7 inch shell flower holder in Amethyst brought \$67. Interestingly, the similarly-shaped #44 flower center with crystal foot and stem, with an Amethyst top, brought the exact same price. (Note there is also a larger version, which is #42.)

A tall samovar in Topaz with Grape etching brought \$305. Another samovar in Topaz, this one the wider shape, etched #695, sold for a mere \$149. The seller mentioned that the pattern appears on the front side only. I thought they were always etched front and back. If you have one, please check yours, and report your findings!



An oval Cambridge dealer sign (the one shaped like a Cambridge paper label) in satinized crystal brought \$110. About a week later, a second one brought \$120. Speaking of

Cambridge dealer signs, a prism style sign in Willow Blue brought \$141. A prism sign in Emerald Green brought \$139.

A #3500/27 Gadroon footed bowl in Crown Tuscan brought \$210. I just don't see this particular bowl in Crown Tuscan very often.



It's not often that a seller states that a piece has been repaired, when in fact, it has NOT. But the seller of a Moonlight Blue flower frog that fits the Caprice Rose Bowl made this statement. What do I mean? Years ago, I found one of these. I, too, thought that some numbskull had clumsily ground it off on the side – WHY, I could not fathom. Then I realized that the piece must have been formed in a mold sideways. I don't know whether it was a single mold, or a block mold that made more than one. (I suspect the former.) But think about it: it is pretty hard to make glass in a mold that resembles a waffle iron. No, you have to pour it into a deeper, hinged mold, and pray that the glass finds its way around all the holes that are characteristic of this particular flower frog. Bottom line: the seller apologized for the way the piece was made at the factory. So if you find one of these, don't pass it up (or berate the seller for offering repaired items) just because it looks like someone ground it off on one side.



Yes, someone did indeed grind off part of the side – *at the factory*. And if you're a seller, don't let an educated but canny buyer talk you down on the price because of it!

This month's groaner was a #1402/139 Tally Ho 10 inch "top hat" vase in Amethyst, hidden in the "Amethyst" glass category, which sold for \$28.



Runner-up for high hammer price in this month's report was a #119 basket in Amber with Gloria etching. It brought \$456 -- and deservedly so, as you won't have many chances to skip away with one of these.

That's all for this installment of the eBay Report. If you see any interesting Cambridge glass on eBay that you think I should be watching or reporting on, or if you have any other input, feel free to contact me at LAGlass@pacbell.net. Until next month, happy Cambridge hunting!

An Enchanting Convention

by Gerald Vaccarella

Ah, the excitement of Hollywood. Traveling past Cleveland I'm excited about going to the Hollywood of glass making, Cambridge, Ohio. Can anyone think of glass that's more colorful? The Glitz and glitter of a Tahoe blue statuesque claret reminds me that the theme of this year's convention "Hollywood" is an apropos one. The magnificent variety of colors has always attracted me to Cambridge glass like actors drawn to the dream factory called Hollywood.

I'm traveling down Interstate 271 south on a bright, June day. It's not Hollywood and Vine but I'm enjoying it. The streets don't ring like Hollywood but Steels Corners Road reminds me I'm in Ohio. How about Arlington Road off 271? I'm going to Cambridge but now reminded of Washington. Maybe it's the political candidates creeping into my mind. Where is our country headed? I wonder about that a lot. I love the lush hills and valleys as I approach Cambridge. It's always a welcome sight to my tired eyes as I'm finishing my drive into this town nestled in the great state of Ohio. It's an Ohio year with the Cavaliers and Indians, both royalties in the catacombs of the sports world. With high hopes and the Hollywood stars of NCC, I arrive with a smile on my face. A quick phone call and I make contact with my great star studded friends that come to the NCC convention.

I became a movie maven when my dad owned a movie theater in the 1940s in a small town called Lima, NY. Lima had a benign history. Its early residents in the 1780s didn't want to make a state of confusion so they used the name Lima to differentiate from Old Lyme, Connecticut where most of them came from. Lima, NY is where I contracted the movie bug. There is a sister city called Lima Ohio, coincidentally. Its history is that the name came from Lima, Peru where quinine was allocated to fight malaria in the Lima Ohio area known then as "The Great Black Swamp". Lima, Ohio history is somewhat murkier than its NY version with the famous John Dillinger gang roaming Lima, Ohio highways and byways. Lima, Ohio got a reprieve in history. It went back to the top of the heap when the city produced the Abram tanks during World War II and military trucks that greatly helped the war effort in the forties. Back to my dad's Lima, New York theater. If a movie got scary, this three year old ran up the aisle to escape to my mother or dad. Mother was taking tickets or selling popcorn. When a theater worker didn't show up my mother was the pinch hitter. Dad manned the movie projector room of which I remember with curiosity and awe. My joy in the movie world continued for three years until my father decided to go in another entrepreneurial direction. The movie bug was firmly entrenched by then and I've had it ever since. I've met a few Hollywood stars in my time but most on a visit

to Forest Lawn cemetery in Glendale, CA.

Since my enchantment with Cambridge glass in the 1970s I always check out any glassware that appears in a movie. I remember briefly seeing the famous Cambridge sea shell #40 flying lady bowl in a movie but it was a brief shot. The most vivid and long lasting glass shot was an "Iris and Her-ringbone" crystal glass pitcher (1928-1930s). I wish it was a Cambridge pitcher but it happened to be a Jeannette company pitcher. It was in a 1945 movie called "Meet Me in St Louis", starring Judy Garland. The story takes place in 1900 but the pitcher was produced mostly in the 1930s. The set decorators didn't know their glass. I accepted this faux pas because it was the only scene in a movie ever dominated for a considerable length of time (at least 10 seconds or more) by a piece of glass. The story goes like this; dad gets angry at the announcement his daughter is going to marry her boyfriend. Dad's resting on a sofa but suddenly jumps up and grabs the Iris pitcher sitting on a table. The father (Leon Ames) starts yelling and running around the room after the boyfriend to commit mayhem. Dad is going after the perspective son in law with the Iris pitcher, swinging it back and forth. It gets more time than any piece of glass in movie history but, alas, it's not Cambridge glass!

The convention theme of Hollywood is all over our convention. I realize this vividly the next morning (Friday) at the first timer gathering in the confines of the Cambridge museum. I make my way into the kitchen area for a cup of joe and a Kennedy donut. There always is a "Kennedy" somehow mixed in with the Hollywood crowd. I work my way to the hallway talking to one of the stars of Hollywood (I mean Cambridge) glass who works hard for us all in the trenches of NCC Inc. He is a pleasant, quick to smile individual, bespectacled and tall and from Texas. I pointed to a postcard (one of my collections) framed on the hall wall. It says "The Beverly Hills Restaurant, Cambridge, Ohio". I mused to my smiling friend out loud that I'd like to find one of those for my postcard collection. Suddenly, there was an epiphany. A clear voice began to speak. I looked around and at my NCC friend with puzzlement. Where was this voice coming from? It didn't sound like Katherine Hepburn because the accent was wrong. It couldn't be "Hoppy" (Hopalong Cassidy/William Boyd) who was born near Cambridge because of the voice. The one thing about Hoppy that might make it possible was he entered the world in a town called Henrydrysburg that is thought to be haunted. That whole Egypt Valley is very unusual. The valley (includes Hendrysburg) abounds with cliffs, barren rocks and such that it reminds people of the old west. Hopalong Cassidy was born there! Seems like ghosts in Hendrysburg for sure but that's 25 miles from Cambridge. The voice seemed female.

It might be Bette Davis...her ghost? The voice was right and I stood mesmerized as the voice continued,” Beverly Hills restaurant was located on street etc many workers and Cambridge residents dined there etc” . The voice gave an incredible two minute history of the Beverly Hills restaurant as I stood there in awe. I walked around the corner and into the museum part but no one was there! Who could it be? It sounded like Bette Davis but my NCC friend gave me no clues to this mystery. Who would know lots of Cambridge and Hollywood history so well but not physically be there? It had to be the ghost of Bette Davis? or Norma Shearer or...? How about Gloria Swanson? She haunted us all in the gripping, memorable 1950 movie, “Sunset Boulevard”. That was it! Gloria came back again. Maybe she was gearing up for another comeback? I wandered the wonderment of the Cambridge museum and talked with the very pleasant Betty (not Bette Davis), the docent who is always a joy. I left the museum in a state of Hollywood excitement.

It was off to the stretch glass program that was informative. I learned a lot and thought Hollywood dreams always stretch our imagination. The glass show opened right afterward and I was very impressed. It seemed to satisfy more collectors who found the show to have more breadth than usual. The glass show was the talk of the town at the banquet dinner that night. Each day of the convention had a theme. I liked the “Happy Days” theme because I lived through those times. Conventioneers seemed in the Hollywood phase some dressing in the spirit of the convention. “Bring and Brag” brought the Siskel and Ebert of the Cambridge world to the table in the form of Lynn Welker. He did a magnificent job but didn’t have to wear a “top hat” to entertain us with top information.

The next morning I got up and find my way to the breakfast area of my hotel. My head is still reeling with that voice that very intelligently and decidedly told me a Hollywood/ Cambridge story. Bette, Gloria Swanson.....who? the Beverly Hills Restaurant. No, I’m in the Days Inn breakfast nook. I head for a table with some breakfast and hear a clear voice say “join me for breakfast?”. WOW, I immediately thought Gloria Swanson. Her voice was clear, pleasant and decisive. She had star quality. That’s one of the reasons I like the NCC, star quality people one and all. Gloria is no exception. She is the genuine person you want to join for breakfast not the dream factory type from Hollywood. Her name tag always tells the story, “Gloria”, oh my gosh! “Have you found any “Gloria” at the show?”, I inquire. Reality sets in as I greet and speak with Gloria who happens to collect Gloria, a glorious Cambridge pattern. A quick pleasant breakfast and then on to the glass dash and more beautiful glass show. Saturday ends with a slide history of the NCC by older members, some who started the NCC. It brought me back to when I wandered through the Ohio highways looking for the two

museums in town. I remember going to Judy Bennett’s stash of Cambridge glass at her house. It was fun just to talk to her, see and buy glass. The memories of past visits, through the years, raced through my mind.

The last day of the show a man appeared with a mysterious bundle in hand. Something was in a checkered cloth, looked like a vintage fifties, cowboy bandana. He nervously glanced around before he showed me and a few friends what he had in the cowboy bandana. I’m getting shades of ghosts again. I can see “Hoppy” riding his beautiful white horse, Topper, through the western hills of Egypt Valley right here in Ohio. Finally, the “Hoppy” surrogate opens the vintage cloth and a glinting, diamond like ashtray comes out. Glancing nervously around he gives us a Cambridge factory history lesson but it’s not about cowboys but vintage fifties Cambridge glass. Before we can get much of a look at the ashtray he mysteriously covers it up. We are sworn to secrecy. Just like the mysteries of Hollywood and mystique of the stars one more Cambridge star ends this fun convention with a mystery.

Well, I’m out on the trail looking for Cambridge glass treasure trying to uncover Cambridge mysteries. We know they are out there. My latest is an emerald candy dish with an etched maple leaf and a triangle on the bottom with a “c” in it. Could it be a #300 candy and cover? Now, I have a mysterious voice echoing in my head added to the enchantment that’s always Cambridge glassware. ¶



NCC welcomes the following new members

- | | |
|----------------|----|
| Karen Beattie | FL |
| Matt Beattie | FL |
| Mike Beattie | FL |
| Lorie Farlow | IN |
| Lois Tucker | IN |
| Barbara Ziemer | TX |

For Sale - NCC Books and DVD

Published by NCC • Members receive a 10% discount

TITLE		REGULAR PRICE	MEMBER PRICE
1910 NearCut Catalog Reprint	108 pages, paperback, no price guide	\$14.95	\$13.45
1927-29 Catalog Reprint	66 pages, paperback, no price guide, includes identification guide	\$9.95	\$8.95
1930-34 Catalog Reprint	250 pages, paperback with 2000 price guide	\$14.95	\$13.45
1930-34 Catalog Index	Index for above	\$2.00	\$1.80
1949-53 Catalog Reprint	300 pages, paperback, no price guide	\$19.95	\$17.95
Cambridge Colors II (New)	Hardcover with price guide	\$19.95	\$17.95
Cambridge Rose Point – A Collector’s Guide *** NEW ***		\$29.99	\$27.00
Caprice	200 pages, paperback, no price guide	\$19.95	\$17.95
Decorates	136 pages, paperback, no price guide	\$14.95	\$13.45
Etchings (2nd Edition)	102 pages, paperback, no price guide	\$17.95	\$16.15
Etchings, Non-Catalogued	70 pages, paperback, no price guide	\$12.95	\$11.65
Etchings: Blossomtime	26 pages, paperback, no price guide	\$7.95	\$7.15
Etchings: Candlelight	30 pages, paperback, no price guide	\$7.95	\$7.15
Etchings: Chantilly	44 pages, paperback, no price guide	\$7.95	\$7.15
Etchings: Diane	53 pages, paperback, no price guide	\$7.95	\$7.15
Etchings: Elaine	64 pages, paperback, no price guide	\$9.95	\$8.95
Etchings: Portia	57 pages, paperback, no price guide	\$7.95	\$7.15
Etchings: Wildflower	42 pages, paperback, no price guide	\$7.95	\$7.15
Rock Crystal Engravings	119 pages, paperback, no price guide	\$17.95	\$16.15
Rock Crystal Engravings (Listings)	Companion to above; lists all pieces in all patterns	\$9.95	\$8.95
Rock Crystal 1940 Illustrated Catalog & Price List		\$14.95	\$13.45
Rose Point - Second Edition	146 pages, paperback, no price guide	\$19.95	\$17.95
Pharmaceutical Catalog No.8 1915-1920 Reprint	68 pages, paperback, no price guide	\$9.95	\$8.95
Cambridge Arms compendium		\$7.95	\$7.95
1916 General Catalogue		\$13.95	\$13.95
Rose Point Program - DVD (Postage \$3.00)		\$19.95	\$17.95
Caprice Program - DVD (Postage \$3.00)		\$19.95	\$17.95

How to Order by Mail or from the NCC Website

Send orders to:
NCC • PO Box 416 • Cambridge, OH 43725

OHIO RESIDENTS PLEASE ADD 7.25% SALES TAX

SHIPPING:
\$5.00 FOR THE FIRST PUBLICATION
\$1.00 FOR EACH ADDITIONAL ITEM

Please include your name, complete mailing address and your phone number or e-mail address.

Payments by check or Money Order only, payable to NCC

Books may also be purchased on the NCC website,
www.cambridgeglass.org.

Major Credit Cards are only accepted for web purchases.



DEALER DIRECTORY

Dealer Directory - \$24 for 12-months, size limited by box (see below). Includes listing on NCC website.


Advertising Rates:

1/8 page \$15 1/4 page \$20
1/2 page \$30 Full page \$50

Electronic submissions should be emailed to:

editor@cambridgeglass.org

Use Word. Mailed submissions and all payments should go to PO Box 416, Cambridge, OH 43725. Deadline is 10th of preceding month. Ads must be paid in advance. Show listings are FREE; send info to PO Box or e-mail address 60 days before event.



Connecting Buyers & Sellers!
Tell us what you are looking for and we help find it.
CAMBRIDGE GLASS.US
P. Snyder 740-601-6018
E-Mail and Find Your Glass!
psnyder@cambridgeglass.us
www.cambridgeglass.us

E-Blast
When you are searching for Cambridge glass, email your request and it is emailed to all members and dealers.
P. Snyder, 1500 Edgewood Dr., Circleville, Ohio 43113

PATTON HOUSE ANTIQUES
Specializing in Glass
Heisey • Cambridge • Fostoria • Duncan

Factory Antique Mall
Verona, VA off I-81. Exit 227

The Daniels, Box 547 Louisa, VA 23093
(540) 967-1181

Cheshire Cat Antiques

Specializing in elegant depression to mid-century era glass and vintage kitchen glass.

Francee Boches > 305-884-0335
fboches@cheshirecatantiques.com



Cherished Collectibles

Shopping 24 hours in our online store
Glassware, Figurines, Collectors' Plates

www.cherishedcollectibles.com
Elegant and Depression Era Glass

Heirloom Glass Antiques & Gifts
Large Selection Of Cambridge

13411 Columbia Hwy.
Lynnville, TN 38472
www.heirloomglass.net 931-446-5492
juanita@heirloomglass.net

Edward Sawicki

Memories Antiques

"Glass is our Passion"
Candlesticks and stemware our Specialty."

PO Box 153 646-522-1506
Dunnellen, NJ 08812 ejsawicki@optonline.net

CRYSTAL LADY

1817 Vinton St. Omaha, NE 68108
Bill, Joann and Marcie Hagerty
402-699-0422

Specializing in Elegant Glass & Collectibles
www.crystalladyantiques.com

Glen & Carolyn Robinson
White Rose Antiques
Specializing in Depression Era Glassware

2454 McFarland Road
York, SC 29745

803-684-5685
gandcrobinson@aol.com
whiteroseglassware.com

CRYSTALLINE COLORS

Cambridge • Fostoria • Elegant Glass
Penny Court Mall, Cambridge - 2 booths
Medina Antique Mall
Medina, OH (I-71, exit 218)

Lynne R. Franks 216-661-7382

GLASS FROM THE PAST

Maureen Gillis



www.glassfromthepast1.com
email: maureen@glassfromthepast1.com

Cambridge Nudes - Dave Small

HTTP://CambridgeNudes.com

3011 Cambridge Statuesque

Buy, Sell, Trade

davesmall@mac.com

281-376-3686



TWEAK COLLECTIBLES

Specializing in Elegant Glass
BUY & SELL
WANTED: CAMBRIDGE TURKEYS
417-742-3653
btummons@aol.com

Virtualattic at The Glass Chalet

Specializing in
Elegant Depression Era Glass

Sandra L. Bridwell-Walker

PO Box 726
Newcomerstown OH 43832-0726
740-492-5022 (H) 817-559-0328 (C)
virtualattic@sbcglobal.net theglasschalet@sbcglobal.net

Max Miller

Elegant American Glassware

www.maxmillerantiques.com

The Market Place 713-410-4780
10910 Katy Freeway.
Houston TX 77043 mmxglass@aol.com

Ohio Valley Antique Mall

7285 Dixie Highway (Route 4)
Fairfield, OH 45014
Cincinnati's Largest Multi-Dealer Antique Mall
Hours: DAILY 9:00 a.m. - 9:00 p.m.

513-874-7855
www.ohiovalleyantiquemall.com
cfaxon@ohiovalleyantiques.com



ISAACS ANTIQUES

(740) 826-4015

☞ Located in ☜

Penny Court Mall **Relics Mall**
637 Wheeling Ave 616 Main St
Cambridge, OH Zanesville, OH

BAKER FAMILY MUSEUM

805 CUMBERLAND ST.
CALDWELL, OHIO 43724
740-732-6410

bakermuseumnellbaker@msn.com

Wed & Thurs 9-4; Fri - Sat 9-5

MARGARET LANE ANTIQUES

2 E. Main St. New Concord, OH 43762
Lynn Welker (740) 826-7414

Cambridge Glass Matching Service
Hours: Mon-Fri 10-12 AM, 1-5 PM
or by appointment

Our House Antiques

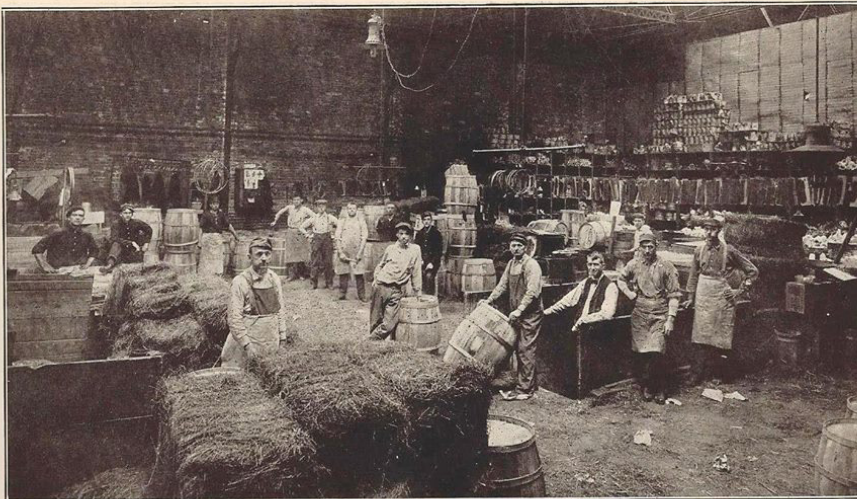


Linda and David Adams
Las Vegas, NV
1-800-357-7169



www.OurHouseAntiques.com
email: David@OurHouseAntiques.com

National Cambridge Collectors, Inc.
PO Box 416
Cambridge OH 43725
email: editor@cambridgeglass.org
website: www.cambridgeglass.org



Packing Room, a very important department, done only by those of long experience. Very few breakage complaints are received, which testifies to their ability.

"This photo is the Packing Department at the Cambridge Glass Company in the early years. They used straw to pack the glassware in wooden barrels that they made at the glasshouse. It would then be shipped by train to stores all over the country!"

The National Museum of Cambridge Glass

**Open April thru October
only**

