



# Cambridge Crystal Ball

Published by the National Cambridge Collectors, Inc. as a resource which informs, invites and inspires people to encourage the continued preservation of the glass produced by the Cambridge Glass Company of Cambridge, Ohio for future generations.

Issue No. 496

March 2016

## Convention 2016 - *Hollywood*

# Are You Ready for Your Close-up?

By Rick Jones



Scripts are being written, scenery soundtracks created and even a dose of film editing are among the behind-the-scenes efforts being undertaken to stage the 2016 NCC

### Convention – **HOLLYWOOD!**

While we would love to have custom trailers for all our Stars (we mean YOU!), we have the next best thing ... Group Rates at area hotels. If you have been tracking our updates on [www.cambridgeglass.org](http://www.cambridgeglass.org), you will see that thanks to Sandy Bridwell-Walker and a few others, that we have secured more attractive hotel rates in Cambridge. Our current list is in this issue.

For the Comfort Inn and the Sleep Inn, we have custom links that will take you to an online reservation page. Just copy these links, paste them into your browser and hit enter ... you'll be taken to pages built just for NCC. No waiting for desk clerks, no being put on hold, just fill in your information including credit card.

A very tentative Convention Schedule is published in this issue. We are confident there will be an Opening Night event on Wednesday late afternoon with a Free Night for dinner on your own to catch up with old Friends of Cambridge.

Convention Registration will be in the April, May and June Crystal Balls. We are actively looking at ways for you to register online. This will help us greatly reduce paperwork and keep more accurate records of

who is attending and what they are attending. As more details on this are available, we will let you know. Keep checking our website.

Speaking of news, we are putting finishing touches on a program called "Ishtar Meets Waterworld: Turkeys, Dogs and Famous Flops." The closing part of this program will be Lynn Welker's David Letterman-style Top Ten List of biggest flops in Cambridge Glass history. This will be a Can't Miss Blockbuster.

Please get your hotels lined up. Just mention the Cambridge Glass Collectors Rate. It also might make sense to join the respective hotel's affinity programs.

### *What's Inside*

Convention2016:Are You Ready for Your Closeup ...	1
Presidents's Message .....	3
Museum: What happens in the Off Season....	4
Change in Fall Meeting Date .....	5
Cambridge Hotel information.....	6
2016 Convention Tentative Schedule.....	7
From the Archives: 1948.....	8
Only Questions - No Answers.....	9
eBay Reports.....	10

# National Cambridge Collectors, Inc.

PO Box 416 Cambridge, OH 43725-0416

## Board of Directors

	2016	
Cindy Arent	Larry Everett	Mark Nye
	2017	
Ken Filippini	Millie Loucks	Freeman Moore
	2018	
Julie Buffenbarger	Doug Ingraham	David Ray
	2019	
Rick Jones	Lindy Thaxton	Lynn Welker

## Officers

President	David Ray
Vice-President	Doug Ingraham
Secretary	Lindy Thaxton
Treasurer	Millie Loucks
Sergeant-at-Arms	Mark Nye

Director of Strategic Planning	Ken Filippini
Director of Human Resources	David Ray
Chair, Standards Committee	Sharon Miller
Chair, Endowment Committee	Doug Ingraham

## Member Services

### Vice President

Member Relations  
Convention  
Digital Media  
Glass Dash  
Glass Show  
Study Groups  
Webmaster

Rick Jones  
Freeman Moore - Membership Database  
Rick Jones - Convention Director  
Alex Citron - Manager of Facebook Operations  
Larry Everett & Frank Wollenhaupt  
Sandra Bridwell-Walker & Roger Loucks  
Jeannie Moore - Study Group Coordinator  
David Adams

### Development

### Vice President

Campaigns  
  
Events  
  
Projects  
Publicity

(vacant)  
Ken & Jane Filippini - Annual Fund Directors  
Larry Everett - Director of the Heritage Society  
Will & Bev Acord - Auction Managers  
Lynn Welker - Auction Manager  
Carl Beynon - Jeweler & Scotties Project Manager  
Jonathan Fuhrman

### Education

### Vice President

Crystal Ball  
Publications  
Media Productions  
Research  
Programming  
NCC History

Larry Everett  
Freeman Moore - Executive Editor  
Mark Nye - Director of Publications  
Dave Rankin - Director of Media Productions  
Mark Nye - Archivist  
Greg Vass - Director of Programming  
Mark Nye - Archivist

### Museum

### Vice President

Public Operations  
  
Facilities & Grounds  
Collections  
Merchandise Sales  
  
Community Relations

Cindy Arent  
Sandra Bridwell-Walker - Docent  
Julie Davey - Docent  
Sandy Rohrbough - Docent  
Betty Sivard - Docent  
Gary Wiseman - Docent  
Carl Beynon - Director of Facilities  
Lynn Welker - Director of Collections  
Lynn Welker - Gift Shop Manager  
Cindy Arent - Gift Shop Manager  
Cindy Arent

### Administration

### Vice President

Accounting & Finance  
Information Technology

Ken Filippini  
Lisa Neilson - Office Manager  
(vacant)

## ADDRESS CHANGES

Please send address changes to:  
Membership - NCC  
PO Box 416  
Cambridge, OH 43725-0416  
or by e-mail to:  
[membership@cambridgeglass.org](mailto:membership@cambridgeglass.org)



## CONTACT US

136 South 9th Street  
Phone: 740 432-4245  
[nccglass@yahoo.com](mailto:nccglass@yahoo.com)



David Ray, President.....  
e-mail: [westervillesh@hotmail.com](mailto:westervillesh@hotmail.com)  
Lindy Thaxton, Secretary.....  
e-mail: [secretary@cambridgeglass.org](mailto:secretary@cambridgeglass.org)

## Heritage Society

*Ensuring the preservation mission of the NCC through planned giving and estate bequests.*

Members of The Heritage Society are those who have included the NCC in their wills or estate plans, thus providing the organization with a secure future.

The mission of The Heritage Society is to foster smart estate planning and to assure that NCC is not forgotten as an important beneficiary. Any pledge is meaningful and appreciated.

All Cambridge collectors - both current and future - will benefit from, and be grateful for your support.

Let us know how we can help with your future plans.

NCC Website: [www.CambridgeGlass.org](http://www.CambridgeGlass.org)

Miami Valley Study Group Website: [www.mvsg.org](http://www.mvsg.org)



## PRESIDENT'S MESSAGE

### *Experience the March Auction*

The 2016 edition of the March Benefit Auction has arrived. The weekend will begin with an auction preview starting at 6:30 pm on Friday evening followed by the March membership meeting. Lynn Welker will end the evening with his traditional auction overview where he will highlight many of the rare and unusual pieces of Cambridge glass for sale in this year's auction. The doors of the Pritchard-Laughlin Civic Center will open at 8:30 am for the Saturday preview and the auction will start promptly at 9:30 am. For everyone planning to attend this year's auction, I have good news. In the last month's issue of the Crystal Ball, Rick Jones highlighted the greatly reduced hotel rates available in the Cambridge area. Many of the hotels are offering rates 20%-30% lower than last year. Although some of the discounted rates are ear-marked for annual convention, many of the hotels are offering the discounted rates throughout the year. To ensure receiving the discounted rate, you must indicate to the hotel clerk that you are a member of the National Cambridge Collectors. You can visit the NCC website to obtain a complete listing of hotels and hotel rates in the Cambridge area.

One of the most enjoyable aspects of being your President is traveling to glass shows throughout the country visiting members who are unable to regularly attend NCC's membership functions held in Cambridge, OH. The Sanlando Depression Glass Show was held on January 23-24 in Sanford, FL. Residents of Florida are very fortunate to have four quality glass shows held in their state throughout the year. During my visit to Sanford, I was able to renew many friendships with Cambridge collectors living in the area. For the past several years, Fleur de Lys Healy has shared her knowledge and passion for Cambridge glass and the National Cambridge Collectors to glass show attendees throughout Florida. I want to thank Fleur de Lys for continued support and commitment to educate collectors about Cambridge glass.

Collectors began arriving at the Sanford Civic Center around 8:15 am. Due to the unusually cool weather conditions, guests were permitted to wait inside where they could enjoy a fresh pastry and a warm cup of coffee. The same weekend of the Sanlando Show winter storm Jonas dropped more than two feet of snow on most of the Mid-Atlantic States. I was joined this year by NCC members Greg Vass from Washington, DC and Jonathan Fuhrman from Northville, MI. Although Greg

and I have attended the Sanlando Show multiple times, this was Jonathan's first visit. The glass show opened its doors at 9:00 am. Shoppers dispersed in multiple directions searching each glass dealer's booth for new acquisitions for their collection. Approximately 25 glass dealers from throughout the United States displayed their finest pieces of elegant and depression glassware. Some of the most interesting pieces of Cambridge glass included an Amethyst 3400/38 ball jug etched Apple Blossom, a 3075/6 Peachblow water pitcher etched Imperial Hunt, a 1228 Heatherbloom pillow vase etched Portia, a 747/748 Light Emerald console bowl and candlesticks etched Cleo, a 3400/94 Gold Krystal puff box etched Portia, a Royal Blue 3011 nude cordial and tulip-shaped cocktail, a pair of Royal Blue 1338 3-light candlesticks, a crystal Caprice punch bowl, a 6004 8" Crown Tuscan vase gold encrusted Candlelight, and a 278 11" Ebony vase gold encrusted Chantilly. These are only some of the many high-quality pieces of Cambridge available at this year's Sanlando show. Congratulations to the show promoters and all the glass dealers for making the 2016 Sanlando Depression Glass Show an enjoyable destination for glass collectors from around the country.

Within the next few weeks, you will receive the 2016 Annual Fund and board of directors election materials. The Annual Fund is NCC's premier fund raising event of the year. The donations received help to maintain and operate a first-class museum, publish and deliver the Crystal Ball newsletter, purchase glass and ephemera for the permanent collection, etc. To give you some perspective, here is a breakdown of the major expenses incurred 2015: printing and mailing the Crystal Ball newsletter (\$14,000), museum staffing (\$11,000), maintenance and utilities at the museum and storage building (\$17,000), and administration, insurance, licenses and other fees (\$12,500). In addition, the renovation expenses, taxes, insurance, and interest payments on the property adjacent to the museum totaled more than \$16,500. We are very fortunate to have a dedicated group of volunteers who help keep our expenses as low as possible. Your generous donations to the Annual Fund help NCC to fulfill its commitment to maintain a first class museum and educate people about the history and production of the glassware produced by the Cambridge Glass Company.

Thank you for your continued support.

*David*

David Ray  
[westervillesh@hotmail.com](mailto:westervillesh@hotmail.com)



# National Museum of Cambridge Glass What happens in the Off Season?

By Cindy Arent

Each year during the off season, the museum is almost as busy for volunteers as it is April through December. With only two short months until NCC members arrive for the March auction, much work needs to be accomplished.

The off season began this year with painting the ceiling and walls in the Edna McManus Shepard Education Center and the hallways. Before painting, everything had to be removed from the room by volunteers. While the painters were working, we began the process of cleaning the showcases and glassware in the front display area. At this time we only have seven of the 74 showcases left to clean! When we are finished, we will then continue with other off season maintenance projects. The tile floors need to be cleaned and waxed, burned out light bulbs replaced and general cleaning and organization of storage areas.

Winter is also a time for promoting the museum and its new displays for the coming year. Again this year, we were invited to work at the Cambridge/Guernsey County booth at the AAA Great Vacations Travel Expo in Columbus, Ohio. On January 23, Lindy Thaxton and I worked the booth, talked to many, many people and passed out information. It is a very popular annual event that draws thousands of people interested in planning a vacation or gathering information for day trips. A big “Thank You” to the VCB for providing this wonderful opportunity each year!

Planning the advertising and marketing strategy for 2016 also occurs in the winter months. The museum already has eight motorcoach groups booked for 2016. Many wonderful co-op marketing opportunities are offered by the Cambridge/Guernsey County VCB each year to area attractions. NCC will be participating in exciting options that range from boosting our Facebook posts through the VCB page and digital advertising on TripAdvisor, to an ad in the July issue of Amish Heartland Magazine.

We hope to see you at the March 5<sup>th</sup> auction! The museum will be open Friday, March 4<sup>th</sup> from 10:00am to 4:00pm and Saturday, March 5<sup>th</sup> Noon to 4:00pm. See you then!



Cindy Arent and Lindy Thaxton dressed as glassworkers to promote the Museum and Cambridge/Guernsey County at the AAA Great Vacations Travel Expo in Columbus, Ohio. They also get new ideas from other museums and attractions that could be adapted to promote the Museum.





Rich Bennett loves to crawl up the ladder to change light bulbs!

Dear Cambridge Glass Museum,

I was in Cambridge in December enjoying the Dickens Village. We walked up to the museum and were so lucky to meet two of your volunteers. While the museum wasn't officially open they were so gracious to give up some of their time for what felt like a private tour. It reminded me of the feeling of friendliness that small towns give you. Thanks again so much,

Who likes to clean? These NCC members do!

Left to Right: Sally Slattery, Reggie Gerko, Rich Bennett, Carl Beynon and Lindy Thaxton.



### Fall Meeting Date Change

Mark your calendars for October 15 as the date of the NCC Fall Membership Meeting and Program. Yes, it has been the first Saturday in November for a long time, so why the change? For those members that travel, the weather to be a little more peaceful in October. For those members who temporarily move to Florida (or other southern locations) for the winter, this earlier date should help in their schedule. For the past few years, The National Museum of Cambridge Glass has been an active participant in the holiday Dickens activities. This earlier date will eliminate a schedule problem during the first weekend in November. Plan now to join us for the fall meeting and give us your feedback.





The following Cambridge area hotels are ideal for Friends of Cambridge, glass dealers and other guests who plan on attending our 2016 Annual Convention (*HOLLYWOOD!*) or other events during the year. When making a reservation, please ask for the “Cambridge Glass Collectors rate”.

**Rates Effective as of: 2/10/2016**

<u>Hotel</u>	<u>Phone Number</u>	<u>Room Rates</u>	<u>Comments</u>
Comfort Inn	740-435-3200	\$79.00 \$89.00 \$109.00	2 Queen Beds 1 King Bed Suite w/ hot tub
Sleep Inn	740-435-0035	\$79.00	Book with the links below: <a href="http://www.comfortinn.com/ires/en-US/html/ArrivalInfo?hotel=OH204&amp;srp=LGLASS&amp;pu=no">http://www.comfortinn.com/ires/en-US/html/ArrivalInfo?hotel=OH204&amp;srp=LGLASS&amp;pu=no</a> <a href="http://www.sleepinn.com/ires/en-US/html/ArrivalInfo?hotel=OH587&amp;srp=LGLASS&amp;pu=no">http://www.sleepinn.com/ires/en-US/html/ArrivalInfo?hotel=OH587&amp;srp=LGLASS&amp;pu=no</a>
Hampton Inn	740-439-0600	\$100.00 \$105.00 \$120.00 \$145.00	Standard Double Queen Standard King Suite Whirlpool Suite
Microtel	740-435-8080	\$69.00 \$79.00 \$89.00	Single Queen Double Queen Queen Suite
Holiday Inn Express	866-925-8676	\$119.99	Any Room
Days Inn	740-432-5691	\$59.00 \$79.00 \$79.00	March Rate (off-season) Likely Convention Rate, may change Likely Fall Rate
Baymont Inn	740-439-1505	\$89.99	6-22-6/26

**If you book one of these hotels at a lower rate, PLEASE LET US KNOW. Thanks.**

**Sandy Bridwell-Walker** Glass Show Committee [virtualattic@sbcglobal.net](mailto:virtualattic@sbcglobal.net)  
**Rick Jones** Convention Director [Caprice0@aol.com](mailto:Caprice0@aol.com)

If you book another hotel in the area, please share that knowledge as well and we'll update this listing and our website [www.cambridgeglass.org](http://www.cambridgeglass.org)



# HOLLYWOOD!

## 2016 NCC CONVENTION

### TENTATIVE SCHEDULE

#### WEDNESDAY, JUNE 22

- TBD** Board Meeting
- 5:00 pm** Opening Night Red Carpet Reception, more details in April  
Dinner on your Own, Grab a Friend

#### THURSDAY, JUNE 23

- 9:00 am** Registration Opens National Museum of Cambridge Glass
- 10:00 am** Back Lot Tour/Casting Call National Museum of Cambridge Glass
- 5:00 pm** Cocktail Reception Pritchard Laughlin Galleria
- 6:00 pm** Opening Dinner Buffet, Meet the Board Pritchard Laughlin Galleria
- 7:30 pm** Program "Ishtar Meets Waterworld" Pritchard Laughlin Conference Room
- Turkeys, Dogs and Famous Flops

#### FRIDAY, JUNE 24

- 8:00 am** Registration Opens National Museum of Cambridge Glass
- 9:00 am** First Timers and Mentors Program National Museum of Cambridge Glass
- 9:00 am** Coffee with Cambridge National Museum of Cambridge Glass
- 1:00 pm** Glass Show and Sale Opens Pritchard Laughlin Exhibit Hall
- 5:00 pm** Glass Show and Sale Closes
- 6:00 pm** Cocktail Reception Pritchard Laughlin Galleria
- 6:45 pm** Dinner & Annual Meeting Pritchard Laughlin Galleria
- Awards Presentation
- 8:30pm** Bring & Brag and Glass Identification Pritchard Laughlin Conference Room

#### SATURDAY, JUNE 25

- 7:00 am** Glass Dash – Early Bird Admission St. Benedict’s Gymnasium
- 8:30 am** Glass Dash – Regular Admission St. Benedict’s Gymnasium
- 10:30 am** Glass Show and Sale (**note earlier opening**) Pritchard Laughlin Exhibit Hall
- 12:00 pm** Educational Program TBD Pritchard Laughlin Conference Room
- 4:00 pm** Glass Show and Sale Closes
- 4:00 pm** Tentative Bus Tour – invitation only National Museum of Cambridge Glass
- 5:30 pm** Cocktail Celebration Pritchard Laughlin Galleria
- 6:30 pm** Wrap Party and Dinner Pritchard Laughlin Galleria
- 7:30 pm** Miami Valley Study Group Presents: Pritchard Laughlin Conference Room  
THE STARS OF CAMBRIDGE

**MORE SPECIAL EVENTS, ATTRACTIONS AND POP-UP PROGRAMS TO BE ANNOUNCED!**



## From the Archives

by Mark Nye

The following article was originally published in a September 1948 issue of the Cambridge, Ohio newspaper, "The Daily Jeffersonian." It was a part of an on going series of articles on manufacturing plants in Cambridge and the surrounding area. It was printed under the byline of Dick Rose. It was accompanied by four photographs. Unfortunately, copies from the microfilm copies of the newspaper are unsuitable for reproduction. Two of the photographs were taken next to a furnace showing glass production; a third was of H. J. Hancock (head of the cutting department) cutting a piece of glass while the fourth was of a sample room and included Miss Betty Mitchell, sample room attendant. Betty Mitchell was one of Mary Martha Mitchell's sisters and an aunt of Cindy Arent.

### "Skilled Craftsman Are Employed At Plant

One of Cambridge's best known industries is the Cambridge Glass Company, for 46 years one of America's largest producers of fine crystal which is known the world over. The glass industry has made this city as famous for its crystal as Venice when the Italian city was the art center of the world and holder of a virtual monopoly on the glass industry.

Cambridge is not the only producer of hand made glass in Ohio. In fact it is one of many, but the plant here is the largest in size of any in Ohio and the second largest in production of hand made crystal in the United States.

In a day when machinery has become the basis of American production, the firm started here in 1901 by the late Arthur J. Bennett still produces exquisite glass by hand. The emphasis is on quality and perfection, not mass production. Machinery has not been invented to produce beautiful crystal as efficiently as that produced by the work of hand. (Editor's note: The Cambridge Glass Company was organized under the auspices of the National Glass Company and they hired Mr. Arthur J. Bennett to manage the company. By 1906 he owned the company but was not the actual founder of the company.)

Cambridge Glass Co. was started here ...because of the natural gas fields in this area and the famed sand beds of western Pennsylvania and eastern Ohio. Since Mr. Bennett's death in 1940, the men he assembled to help start the plant are carrying on this ideas to produce the best glass possible.

Heading the company is W. L. Orme, who served under Mr. Bennett as vice president; G. Roy Boyd is vice president and treasurer; W. C. McCartney is secretary and sales manager; and Howard A. Lovelady serves as assistant sales manager.

### House of Wonders

Cambridge Glass Co. has been called the house of wonders. An inspection trip through the hug dull red brick building with its quaint roof angles and cone shaped smoke stacks jutting above the roof leaves an impression of antiquity and old worldliness.

Hundreds of skilled workmen huddle around the base of the stacks which are about 100 feet in diameter, each containing 14 openings spaced at regular intervals where the molten glass lies in clay pots ready to be transformed into beautiful crystal.

According to Mr. Lovelady, the pots hold about a ton of material, enough to make several hundred finished pieces. The pot is charged and remains undisturbed for 12 to 18 hours in which time the temperature will reach about 2700 degrees.

### Use Two Methods.

At Cambridge Glass Co., two methods are used around these stack bases to form the ware. One is by blowing the glass which will shape a ball of molten glass on the end of a hollow blow pipe into hollow shell, the start of a hand made goblet.

The other method is pressing. The molten glass is forced into cast-iron molds so that glass assumes the shape and design of the mold. After the stem and base are put on a goblet by workers around the furnace, it is carried to the Lehr, a long furnace extremely hot at one end and cool at the other. This process is necessary to remove internal strain from the glass.

In the cutting and etching rooms, the process is as extremely interesting as where the glass is shaped. Cambridge Glass Company's etching room is the largest and finest equipped in the country and another department where the exacting work is all done by hand.

### Process Complex

Before any design can be placed on glass in the etching department, the design must be cut on a steel plate, not as it will appear on the crystal but exactly in reverse. The print is inked on paper and transferred to the glass, excess paper removed, a covering of acid resisting was applied and then to the hydrofluoric dip which eat away that glass that is exposed.

In the cutting department, steady nerves are at work cutting thin lines in the glassware, perfect lines being cut by a hand operation that modern machinery fails to do. Throughout this big factory, the poise and dignity and pride-of-craft still have their place in the 20<sup>th</sup> century of stamping machines.

### Workers Skilled

Possibly the most modern part of the entire factory is the large display rooms where thousands of pieces of etched, cut stemware, gold decorated and plain lines of crystal are shown. The five mirrored rooms contain samples of every product made by Cambridge Glass Company's 700 skilled craftsmen.

In the various lines of crystal Mr. Lovelady explained the company produces eight patterns of etched glassware, 45 of cut stemware, 10 of gold decorated and many patterns in plain lines. Today, there are more than 5,000 separate items of the Cambridge line which grew from a pitcher, the first piece of glassware made in 1902 and now a treasured possession of the company.

From New York to California and Mexico to Canada, Cambridge Glass has won wide acclaim for its product of quality and sheer beauty. The company maintains sales offices in New York City, Dallas, Chicago and Los Angeles, to distribute crystal produced by one of Cambridge's largest industries." ■

# ONLY QUESTIONS - NO ANSWERS

By Frank Wollenhaupt ([fewvic303@sbcglobal.net](mailto:fewvic303@sbcglobal.net))

During this past month, my wife and I have spent time cleaning our glass collection. I know some of you have large collections and can understand what a job it is. The problem with cleaning every item, you have time to think and ask yourself questions. This is never good because your partner thinks you are talking to yourself. I find myself wondering WHY? Why you can find certain items in some colors but not others and then I question why an item was ever made?

Take for instance item 884-2pc. (Cigarette box and ash tray) Found on page 38 of the 27/29 catalogue. That item doesn't fit any place. It isn't part of a line, it just stands alone and for the most part, you would never give it a second look. It's heavy, takes up a lot of room and the knob on the top of the cigarette lid is hard to get hold of. Ours is in Peach-Blo (light pink) and I think I have seen



one in Light Emerald Green but that's about it. Does anyone have one in their collection?

What about the handled Frog Vase from the 1930/34 catalogue? At least this they made some changes to this item and added warts or a texture to the surface to make it more real like. It has also been seen in a few different colors but the main color is Forest Green. I will never forget when we were at the Imperial Glass Co. taking photos of the 30/34 catalogue for the club and turned the page



and saw it in print for the first time. Everyone in the Imperial office thought we were crazy.

Why are the flower frogs only available in the limited range or colors that they are? We know of several in Ivory, one in Jade, one in Black, none in Royal Blue, Carmen, Topaz, Forest Green, Windsor Blue and other colors. If this was as popular then as it is today, why didn't they make the flower frogs in all the colors?

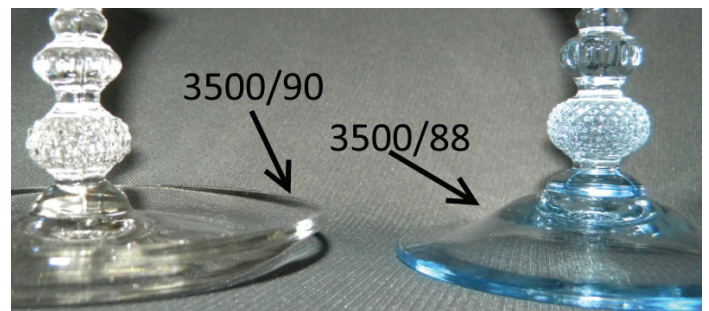
I've talked about swans in the past but the same thing goes for them. They were only made in a limited number of colors and just because you can find one size in a color, doesn't mean that you can find them all in that color.

How many have noticed the difference between the #3500/88 Torchere and the #3500/90 Cigarette Holder with ashtray foot?



This is something that is easy to overlook. The difference between the two is the way the foot is finished. The /88 is turned down flat like a regular stem but the /90 is turned up to allow a person to drop

the ashes from their cigarette. Slight difference but one that is over looked a lot.



Well, looks like I have taken up my allotted space. Till next time.....Keep on looking, the Japonica is at the next stop!



Welcome to the eBay Report. This column features Cambridge glass items that sold on eBay in late January through mid-February, 2016. Selling prices have been rounded to the nearest dollar. Here we go:

## Statuesque (Nude Stem) Stemware Line

A set of 4 9 inch 3011/1 Banquet goblets in all-crystal with optic bowls and satinized stem sold for \$306. The



same seller also offered 3 matching #3011/3 saucer champagnes in a separate auction. These sold for \$183. A set of six 3011/9 cocktails with Carmen bowls sold for \$430.

## Animals and Figural items

A #40 10 inch Flower or Fruit Center (better known as the "Flying Nude" footed bowl) in Amethyst soared to a high bid of \$461. A #11 Seashell Line 8 inch comport with nude stem in Windsor Blue sold for \$265.



A small bunny box and cover in Bluebell with no fur detail hopped to a new home for the opening bid of \$625.

## Covered Candies

I never met a piece of candy I didn't like – just ask my mother. And my dentist. There were some nice Cambridge covered candies this month, and most of them sold at quite reasonable levels:

A seldom-seen "Modern" Candy Jar and Cover in Smoke color sold for \$65 on a Buy It Now offering. Interesting that this has a name, but not a line number.



A #730 half pound footed covered candy in Willow Blue etched Majestic sold for a too-low \$41. A #3900/165 covered candy etched Elaine brought only the \$25 opening bid. A #3500/57 Gadroon 8 inch 3-part covered candy box in Carmen also went low at \$37.

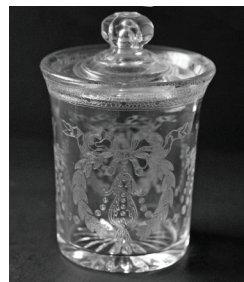


## Etched Tableware and Stemware

A set of six #3075 3 ounce footed whiskeys in Peach Blo with gold encrusted Hunt etching sold for \$163. Some wear to the gold was noted.



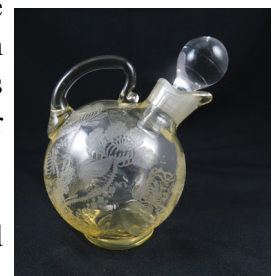
A #28 covered marmalade with Wedgewood etching sold for a mere \$17. Mark my words -- someday a member who collects this etching is going to display his or her collection at the annual convention, and we are going to be stunned at its beauty, wondering why we never appreciated this pattern before.



A scarce #3025 footed tumbler with black foot and stem and crystal bowl, etched Apple Blossom, bloomed at a Buy It Now price of \$35. I pity the poor guy or gal who collects Apple Blossom stems and tumblers on this shape, because he or she might go a lifetime without completing a set. But that doesn't make it any less of a treasure.



A #3400/99 tilted shape oil bottle in Gold Krystal with Gloria etch sold for a very reasonable \$58. This one had the incorrect stopper, rather than the fancier keyhole stopper.



A #147 marmalade jar with slotted glass lid, etched Wildflower, bloomed at \$26. These are infinitely easier to find etched Rose Point, so I was surprised to see that it wasn't more of a battle to win it.



A rare #7801 4 ounce cocktail etched Rose Point with original Cambridge stockroom label sold for \$134.



scarce. Though once chiefly used for emptying ashtrays, they are also handy when paired with a soft brush to sweep and capture the crumbs off the tablecloth at a formal dinner.



A #321 3-3/4 inch old fashioned tumbler with the scarce Vichy etch sold for \$97. I dream of owning a dozen hollow-stem champagnes in this pattern. Okay, okay; so I dream BIG!



A #197 Decagon 6 ounce oil bottle in Peach Blo with Apple Blossom etching garnered \$125, even though it lacked a stopper. This had one of those lovely twisted-style applied handles that Cambridge sometimes used on pitchers and similar items.

This month's sleeper is a #3400/14 7 inch tall comport with Candlelight etching, described by the seller as a "Depression Glass Patterned decorative Compote Vintage Collectible Clear Mint." Two Cambridge hounds sniffed it out, then the high bidder snuffed it for \$10 and some change. I'm telling you, that Glassware – Elegant – Unknown Maker category can be a treasure trove!

This month's champion item is the #1408 60 ounce cocktail churn with metal plunger, etched Portia, for \$1,046. Someone wanted that gem badly! It stands an impressive 17 inches tall.



I've reported on several #617 cigarette jars since I took over this column. This time we saw a green one with Cleo etching and some minor damage, which sold for \$164.

A pair of #3400/97 perfumes in Gold Krystol with the fancy keyhole dauber stoppers in crystal, mounted in gold filigree, on a matching tray, sold for \$199. Though not etched, they were a sight to behold!



2 Caprice #188 2 ounce 2-5/8 inch tall flat tumblers in Amethyst, one with original label, sold for \$54.

Finally, a very unusual (and early) Cambridge glass twine holder in dark green sold for \$47. The screw top was missing and it had several flakes, but really, how many chances are you going to have to obtain one of these? Just seeing it was an education for me, as I was totally unfamiliar with this item.



### Miscellaneous

An Everglades cream and sugar set in Willow Blue sold for a mere \$31. I dunno about you, but I just never see these. The price was a surprise, considering how many collectors of cream and sugar sets there are out there.



A pair of Amethyst wines set in gold toned Farber Brothers stems with the pebbled finish went for a mere \$13.

A silent butler in Forest Green set in Farber Brothers chrome and sporting a wooden handle sold for a reasonable \$26, considering that these are somewhat

That's all for now. If you see any interesting Cambridge glass on eBay that you think I should be watching or reporting on, or if you have any other input, feel free to contact me at [LAGlass@pacbell.net](mailto:LAGlass@pacbell.net). Until next month, happy Cambridge hunting!

## WANTED

### *Glass Dash Participants*

We are on the lookout for several interested glass dealers for the 2016 Glass Dash which will be held Saturday June 25, at the St. Benedict's Gym, the same location as the past several years. The dash is where everyone gets the same chance to add that rare item to the collection. We are looking for anyone that is wanting to reduce their collection or just has too much. This is a great venue to reduce your collection and add that rare item. If interested in joining the fun, please contact Frank Wollenhaupt by email at [fewvic303@sbcglobal.net](mailto:fewvic303@sbcglobal.net) or just give him a call at 937-475-2889.

NCC welcomes the following new members

Nancy Crose	IL
Tom Crose	IL
Jill Dee Cherry	OH

## Future Article Topic

Attention all collectors of the Rock Crystal Engraving 907 Neo Classic. We are working on an article about this cutting and could use any information you have about items in your collection as well as pictures.

Send information to [editor@cambridgeglass.org](mailto:editor@cambridgeglass.org) and be on the lookout for the article in the future.



## Kids Corner

You enjoy Cambridge glass but how do you share that interest with the younger generation? Do you have suggestions to get the younger generation involved?

Do your children have their own collections? How did they get started? Is there something special or unique in their collection? What are they looking for?

Perhaps your children are grown and on their own. How do they continue their interest?

I would like to create this new column and get stories from you. It would be great to get stories and pictures from our younger members (hey, don't worry about grammar and spelling, we can fix that). You can start with a paragraph and maybe a picture.

Even you were a child once, how did you get started?

Send your ideas to: [editor@cambridgeglass.org](mailto:editor@cambridgeglass.org)

*The 81<sup>st</sup> Show Sponsored by Del-Mar-Va Depression Glass Club*

## 2016 Show and Sale

All American: Pattern, Elegant, Art Deco & Depression-Era  
Glassware, China, Kitchenware, Pottery, Books & Linens

*Special Display: "Pretty In Pink & Green"*

Saturday, April 23, 2016 10am-5pm

Sunday, April 24, 2016 10am-3pm

**Duval High School**

**Greenbelt Road at Good Luck Road, Lanham, MD**

Capital Beltway I-495 (Outer Loop)

Exit 22A Route 193E Greenbelt/NASA

Capital Beltway I-495 (Inner Loop)

Exit 23 Kenilworth Ave. - Right Lane,

To Route 193 East - Greenbelt/NASA

(about 2½ miles to Duval H.S.)

**\*\*\*Glass Identification - Door Prizes - Food\*\*\***

INFO: 202-544-2333/202-363-6331; Email: [Greg.Vass76@icloud.com](mailto:Greg.Vass76@icloud.com)

Admission: \$4.00



## NCC Events

\*\*\*\*\*

**2016 NCC Auction  
Saturday March 5, 2016**

\*\*\*\*\*

**2016 NCC Convention  
June 23-25, 2016**

\*\*\*\*\*

**2016 Fall Meeting  
October 15, 2016**

## *New Member Benefit*

Each NCC household is allowed one free 20-word classified ad in the Crystal Ball per calendar year as part of their membership. This can be a "For Sale" or "Wanted" type of classified ad. Submit your ad by email to [editor@cambridgeglass.org](mailto:editor@cambridgeglass.org)

## Recent Finds



No. 311 - Console Vase, light emerald with Etch 731 (Rosalie), minus Cover

## Glass Shows

### March 5-6, 2016

Garden State Depression Glass Club Show and Sale  
Lakeview School  
Edison, NJ  
[thelegantable@verizon.net](mailto:thelegantable@verizon.net)

Three Rivers Depression Era Glass Society Annual Show & Sale  
Clarion Hotel  
New Kensington, PA  
<http://www.pghdepressionglass.org>

### March 12-13, 2016

20-30-40 Glass Society of Illinois 44th Glass Sale and Show  
The Concord Plaza Midwest Conference Center  
Northlake, IL  
<http://20-30-40glassociety.org/>

Crescent City Depression Glass Society  
40th Annual Antiques and Collectibles Mart  
Pontchartrain Center  
Kenner, LA  
<http://www.crescentcityglass.org/>

Spring Metroplex Glass, China & Pottery Show & Sale  
Grapevine Convention Center  
Grapevine, TX  
<http://meyershows.com/metroplexmarch.php>

### March 18-19, 2016

Heart of America Depression Era Glass & Pottery Show  
Roger T. Sermon Community Center  
Independence, MO  
<http://www.hoagc.org/Glass%20Show%20page.htm>

### March 19-20, 2016

All-Heisey Glass Show & Sale  
Ossian Hall behind Annandale Vol. Fire Dept.  
Annandale, VA.  
<http://www.natcapheisey.org>

### April 1-2, 2016

North Jersey Depression Glass Club Show & Sale  
Guardian Angel Church  
Allendale, NJ  
973-267-7511

### April 9-10, 2016

Lincoln Land Depression Era Glass Show and Sale  
Illinois Building / Illinois State Fairgrounds  
Springfield, IL  
<http://www.lincolnlandglassclub.com/>

*What have you found lately?*



# For Sale - NCC Books and DVD

Published by NCC • Members receive a 10% discount

TITLE		REGULAR PRICE	MEMBER PRICE
1910 NearCut Catalog Reprint	108 pages, paperback, no price guide	\$14.95	\$13.45
1927-29 Catalog Reprint	66 pages, paperback, no price guide, includes identification guide	\$9.95	\$8.95
1930-34 Catalog Reprint	250 pages, paperback with 2000 price guide	\$14.95	\$13.45
1930-34 Catalog Index	Index for above	\$2.00	\$1.80
1949-53 Catalog Reprint	300 pages, paperback, no price guide	\$19.95	\$17.95
Cambridge Colors II (New)	Hardcover with price guide	\$19.95	\$17.95
Caprice	200 pages, paperback, no price guide	\$19.95	\$17.95
Decorates	136 pages, paperback, no price guide	\$14.95	\$13.45
Etchings (2nd Edition)	102 pages, paperback, no price guide	\$17.95	\$16.15
Etchings, Non-Catalogued	70 pages, paperback, no price guide	\$12.95	\$11.65
Etchings: Blossomtime	26 pages, paperback, no price guide	\$7.95	\$7.15
Etchings: Candlelight	30 pages, paperback, no price guide	\$7.95	\$7.15
Etchings: Chantilly	44 pages, paperback, no price guide	\$7.95	\$7.15
Etchings: Diane	53 pages, paperback, no price guide	\$7.95	\$7.15
Etchings: Elaine	64 pages, paperback, no price guide	\$9.95	\$8.95
Etchings: Portia	57 pages, paperback, no price guide	\$7.95	\$7.15
Etchings: Wildflower	42 pages, paperback, no price guide	\$7.95	\$7.15
Rock Crystal Engravings	119 pages, paperback, no price guide	\$17.95	\$16.15
Rock Crystal Engravings (Listings)	Companion to above; lists all pieces in all patterns	\$9.95	\$8.95
Rock Crystal 1940 Illustrated Catalog & Price List		\$14.95	\$13.45
Rose Point - Second Edition	146 pages, paperback, no price guide	\$19.95	\$17.95
Pharmaceutical Catalog No.8 1915-1920 Reprint	68 pages, paperback, no price guide	\$9.95	\$8.95
Cambridge Arms compendium		\$7.95	\$7.95
1916 General Catalogue		\$13.95	\$13.95
Rose Point Program - DVD (Postage \$3.00)		\$19.95	\$17.95
Caprice Program - DVD (Postage \$3.00)		\$19.95	\$17.95

## How to Order by Mail or from the NCC Website

Send orders to:

NCC • PO Box 416 • Cambridge, OH 43725

OHIO RESIDENTS PLEASE ADD 7.25% SALES TAX

Please include your name, complete mailing address and your phone number or e-mail address.

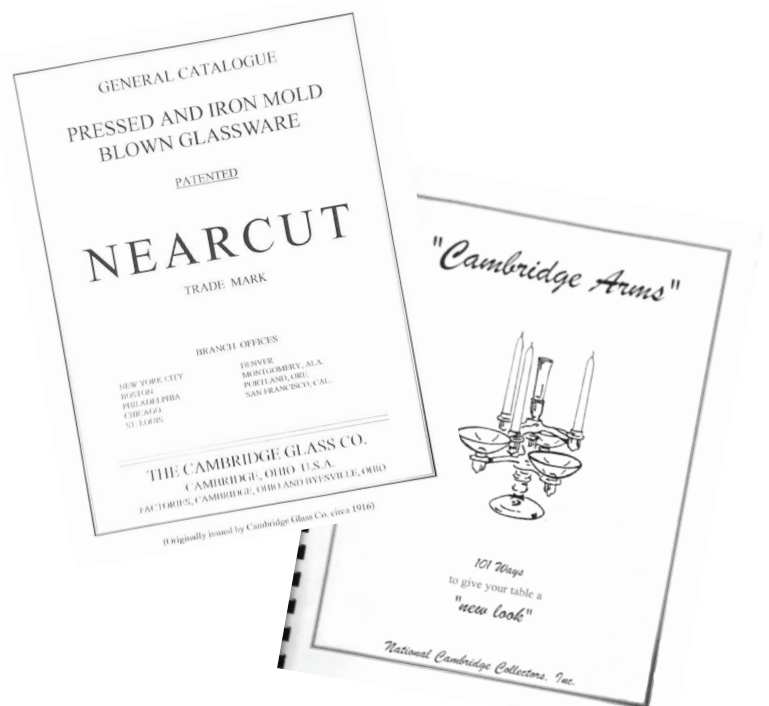
Payments by check or Money Order only, payable to NCC

Books may also be purchased on the NCC website, [www.cambridgeglass.org](http://www.cambridgeglass.org). Major Credit Cards are only accepted for web purchases.

## SHIPPING/HANDLING:

All items (including books) except Scottys:

Total order up to \$6	\$3.50
\$6.01 to \$25.00	\$6.50
\$25.01 to \$50.00	\$7.50
\$50.01 to \$75.00	\$8.50
Over \$75.00	\$11.50



# DEALER DIRECTORY

Dealer Directory - \$24 for 12-months, size limited by box (see below). Includes listing on NCC website.


## Advertising Rates:

1/8 page \$15      1/4 page \$20  
1/2 page \$30      Full page \$50

Electronic submissions should be emailed to:

[editor@cambridgeglass.org](mailto:editor@cambridgeglass.org)

Use Word. Mailed submissions and all payments should go to PO Box 416, Cambridge, OH 43725. Deadline is 10th of preceding month. Ads must be paid in advance. Show listings are FREE; send info to PO Box or e-mail address 60 days before event.



**Connecting Buyers & Sellers!**  
Tell us what you are looking for and we help find it.  
**CAMBRIDGE GLASS.US**  
P. Snyder 740-601-6018  
E-Mail and Find Your Glass!  
[psnyder@cambridgeglass.us](mailto:psnyder@cambridgeglass.us)  
[www.cambridgeglass.us](http://www.cambridgeglass.us)

**E-Blast**  
When you are searching for Cambridge glass, email your request and it is emailed to all members and dealers.  
P. Snyder, 1500 Edgewood Dr., Circleville, Ohio 43113

### PATTON HOUSE ANTIQUES

Specializing in Glass  
Heisey • Cambridge • Fostoria • Duncan

Factory Antique Mall  
Verona, VA off I-81. Exit 227

The Daniels, Box 547 Louisa, VA 23093  
(540) 967-1181

### Cheshire Cat Antiques

Specializing in elegant depression to mid-century era glass and vintage kitchen glass.

Francee Boches > 305-884-0335  
fboches@cheshirecatantiques.com



### Cherished Collectibles

Shopping 24 hours in our online store  
Glassware, Figurines, Collectors' Plates

[www.cherishedcollectibles.com](http://www.cherishedcollectibles.com)  
Elegant and Depression Era Glass

## Classified Ads - Reach over 1,000 avid collectors of Cambridge Glass

Edward Sawicki

### Memories Antiques

"Glass is our Passion"

Candlesticks and stemware our Specialty."

PO Box 153      646-522-1506  
Dunnellen, NJ 08812      [ejsawicki@optonline.net](mailto:ejsawicki@optonline.net)

### CRYSTAL LADY

1817 Vinton St.      Omaha, NE 68108  
**Bill, Joann and Marcie Hagerty**  
402-699-0422

Specializing in Elegant Glass & Collectibles  
[www.crystalladyantiques.com](http://www.crystalladyantiques.com)

### Glen & Carolyn Robinson White Rose Antiques

Specializing in Depression Era Glassware

2454 McFarland Road  
York, SC 29745

803-684-5685  
[gandcrobinson@aol.com](mailto:gandcrobinson@aol.com)  
[whiteroseglassware.com](http://whiteroseglassware.com)

### CRYSTALLINE COLORS

Cambridge • Fostoria • Elegant Glass  
Penny Court Mall, Cambridge - 2 booths  
Medina Antique Mall  
Medina, OH (I-74, exit 218)

Lynne R. Franks 216-661-7382

### GLASS FROM THE PAST

Maureen Gillis



[www.glassfromthepast1.com](http://www.glassfromthepast1.com)  
email: [maureen@glassfromthepast1.com](mailto:maureen@glassfromthepast1.com)

### Cambridge Nudes - Dave Small

[HTTP://CambridgeNudes.com](http://HTTP://CambridgeNudes.com)

3011 Cambridge Statuesque

Buy, Sell, Trade

[davesmall@mac.com](mailto:davesmall@mac.com)

281-376-3686



### TWEAK COLLECTIBLES

Specializing in Elegant Glass  
BUY & SELL  
WANTED: CAMBRIDGE TURKEYS  
417-742-3653  
[btummons@aol.com](mailto:btummons@aol.com)

### Virtualattic at The Glass Chalet

Specializing in  
Elegant Depression Era Glass

Sandra L. Bridwell-Walker

PO Box 726  
Newcomerstown OH 43832-0726  
740-492-5022 (H) 817-559-0328 (C)  
[virtualattic@sbcglobel.net](mailto:virtualattic@sbcglobel.net)      [theglasschalet@sbcglobel.net](http://theglasschalet@sbcglobel.net)

### Max Miller

Elegant American Glassware  
[www.maxmillerantiques.com](http://www.maxmillerantiques.com)

The Market Place  
10910 Katy Freeway.      713-410-4780  
Houston TX 77043      [mmxglass@aol.com](mailto:mmxglass@aol.com)

### Ohio Valley Antique Mall

7285 Dixie Highway (Route 4)  
Fairfield, OH 45014  
Cincinnati's Largest Multi-Dealer Antique Mall  
Hours: DAILY 9:00 a.m. - 9:00 p.m.

513-874-7855  
[www.ohiovalleyantiquemall.com](http://www.ohiovalleyantiquemall.com)  
[cfaxon@ohiovalleyantiques.com](mailto:cfaxon@ohiovalleyantiques.com)



### ISAACS ANTIQUES

(740) 826-4015

↔ Located in ↔

**Penny Court Mall**      **Relics Mall**  
637 Wheeling Ave      616 Main St  
Cambridge, OH      Zanesville, OH

### BAKER FAMILY MUSEUM

805 CUMBERLAND ST.  
CALDWELL, OHIO 43724  
740-732-6410

[bakermuseumnellbaker@msn.com](mailto:bakermuseumnellbaker@msn.com)

Wed & Thurs 9-4; Fri - Sat 9-5

### MARGARET LANE ANTIQUES

2 E. Main St.      New Concord, OH 43762  
Lynn Welker      (740) 826-7414

Cambridge Glass Matching Service  
Hours: Mon-Fri 10-12 AM, 1-5 PM  
or by appointment

### Our House Antiques



Linda and David Adams  
Las Vegas, NV  
1-800-357-7169



[www.OurHouseAntiques.com](http://www.OurHouseAntiques.com)  
email: [David@OurHouseAntiques.com](mailto:David@OurHouseAntiques.com)

National Cambridge Collectors, Inc.  
PO Box 416  
Cambridge OH 43725  
email: [editor@cambridgeglass.org](mailto:editor@cambridgeglass.org)  
website: [www.cambridgeglass.org](http://www.cambridgeglass.org)



This photo was taken in the “Hot Metal” department at the Cambridge Glass Company in 1955.

We do not have any of the names for the people in this photo, so if you recognize anyone, please let us know. Thanks!

***The National Museum  
of  
Cambridge Glass***

***Open April thru October  
only***

