



Cambridge Crystal Ball

Published by the National Cambridge Collectors, Inc. as a resource which informs, invites and inspires people to encourage the continued preservation of the glass produced by the Cambridge Glass Company of Cambridge, Ohio for future generations.

Issue No. 467

April 2013

2013 N C C BENEFIT AUCTION

By Millie Loucks

After the yearend Holidays and Super Bowl the next big event in our house is the March NCC Auction. For months, we had been reading the auction list and looking at all the pictures of the pieces on line, now the time is finally here. It's Friday March 2nd the day of the setup for the auction.

We had arrived in Cambridge on Thursday night so we could get up early to help Jack & Elaine Thompson set out the glass for the Auction. Promptly at 8 am, we meet Jack, Elaine and the other members of the set up crew at the Pritchard Laughlin Center. In case you have never had the privilege of volunteering for the auction set up, you would be amazed by the thought and planning that takes place long before the day of the set up. Since we had all worked together last year, we just dove into the work at hand. The men proceeded to arrange the tables and assemble the risers, as Elaine, Jane Filippini & I covered the tables getting them ready to accept the glass. The next step was unpacking the glass. Like an assembly line, someone supplied the boxes to unpack, someone else unpacked the glass and another person placed the item on the display table according to the organizational chart designed by Rick Jones. The last step is the numbering of each piece according to the auction list. This is usually a two person job, one reading the description and the other actually finding the item and placing the number on it. While the numbering is going on, several people are checking the numbered items to make sure each item is numbered correctly, so the auction will go smoothly. At the time all this is taking place, if a stranger walked into the room I am sure, it would look and sound like a catastrophic mess, but actually, it is more like a well-choreographed dance.

After the set up was finished we all went to lunch and then to the museum to mingle with friends who came in from other states for the Auction. Cindy Arent and her group of volunteers never cease to amaze us with the ever-changing displays and the Museum is always impeccable.

Friday night the club members who were in town for the Auction gathered at the PLCC for the Auction preview, then the Friday night quarterly Club meeting, followed by Lynn's always

entertaining Show & Tell and Auction Hi Lites presentation.

Saturday morning the room for the Auction soon filled with the buzz of anticipation and excitement from members, non-members and dealers. Craig Connelly, our long time Auctioneer started the Auction promptly at 9:30 am. Craig, as always brought his lighthearted humor to the Auction, bidding was brisk, and the items moved along quite nicely. There was a short break for lunch then the Auction continued at lot # 200. I will list for you a few of the items with the most interest. The first big ticket item was #28 a Windsor Blue Flying Lady Bowl for \$1300 followed by an Amethyst 80 oz Ball Jug with white gold apple blossom etch, which went for \$975. The beautiful Crown Tuscan Statuesque Ashtray with black enamel foot fetched \$975. There was a pair of Windsor Blue Statuesque candlesticks, which sold for \$1000. The Royal Blue Sea Shell 52 oz jug with a crystal handle sold for \$1300 and the Carmen 18 in floor vase sold for \$750. The item that sparked the most buzz during the preview was auction #64, the Pomona 1 oz Cordial etch #527 gold encrusted, which was purchased for \$625. The item that surprised me the most was the Crown Tuscan Nautilus 40 oz decanter, which sold for \$1250. I had no idea that it would have sparked so much interest. All the results will be listed on line soon if not already.

The Auction started to wind down around 4 pm as the last of the 426 items were auctioned off. Slowly everyone gathered their prized possessions and started to file out of the room. Another successful NCC Benefit Auction has come to an end. I do not have all the details, but I do know that the Gross sales figure for the Auction 2013 was up 6% over the Gross Sales total for 2012.

Do not forget to mark your calendars for the June 2013 Convention. Looking forward to seeing everyone there.

I have to send out a special thank you to Jack and Elaine Thompson, Lynn Welker, David Rankin and all the other members who tirelessly worked for the past six months to make the 2013 NCC Benefit Auction a success. Fabulous Job!

National Cambridge Collectors, Inc.

PO Box 416 Cambridge, OH 43725-0416

Board of Directors

Cindy Arent	Ken Filippini	Nancy Finley
Les Hansen	Rick Jones	Larry Everett
Freeman Moore	Mark Nye	David Ray
Mike Strebler	Lynn Welker	Frank Wollenhaupt

Officers

President	David Ray
Vice-President	Ken Filippini
Secretary	Freeman Moore
Treasurer	Mike Strebler
Sergeant-at-Arms	Mark Nye

Director of Strategic Planning
 Director of Human Resources
 Chair, Standards Committee

Rick Jones
 David Ray
 Sharon Miller
 Larry Everett - Committee Member
 Susan Everett - Committee Member
 David Ray - Committee Member
 Mike Strebler - Committee Member

Member Services

Vice President

Member Relations

 Crystal Ball
 Convention
 Digital Media
 Member Meetings
 Study Groups

Frank Wollenhaupt
 (vacant) Director of Member Relations
 Tarzan Deel - Membership Data-base Administrator
 Helen Klemko - Executive Editor
 Diane Gary - Convention Director
 Alex Citron - Manager of Facebook Operations
 (vacant)
 Jeannie Moore - Study Group Coordinator

Development

Vice President

Campaigns

 Events

Larry Everett
 Ken & Jane Filippini - Annual Fund Directors
 Larry Everett - Director of the Heritage Society
 Jack & Elaine Thompson - Auction Managers
jack1746@roadrunner.com
 Lynn Welker - Auction Manager
 Joy McFadden - Show Manager
 Mary Beth Hackett - Show Manager
 Larry & Susan Everett - Glass Dash Managers
 Carl Beynon - Jeweler & Scotties Project Manager
 Frank Wollenhaupt

Education

Vice President

Publications
 Media Productions
 Research
 Programming
 NCC History

Les Hansen
 Mark Nye - Director of Publications
 Dave Rankin - Director of Media Productions
 Mark Nye - Archivist
 Greg Vass - Director of Programming
 Mark Nye - Archivist

Museum

Vice President

Public Operations

 Facilities & Grounds
 Collections
 Merchandise Sales

 Community Relations

Cindy Arent
 Sandy Rohrbough - Docent
 Betty Sivard - Docent
 Sally Slattery - Docent
 Carl Beynon - Director of Facilities
 Lynn Welker - Director of Collections
 Lynn Welker - Gift Shop Manager
 Cindy Arent - Gift Shop Manager
 Cindy Arent

Administration

Vice President

Accounting & Finance
 Risk Management
 Payroll
 Information Technology
 Legal

Mike Strebler
 Lisa Neilson - Office Manager
 (vacant)
 (vacant)
 David Adams - Webmaster
 (vacant)

ADDRESS CHANGES

Please send address changes to:
 Membership - NCC
 PO Box 416
 Cambridge, OH 43725
 or by e-mail to:
tarzandeel@gmail.com

WEBSITES

- **NCC WEBSITE**
www.CambridgeGlass.org
- **MIAMI VALLEY STUDY GROUP WEBSITE**
www.mvsg.org

CONTACTS

NCC Museum (phone)..... (740) 432-4245
nccglass@yahoo.com
 David Ray, President.....
 e-mail: westervillesh@hotmail.com
 Freeman Moore, Secretary.....
 e-mail: freemanmoore@verizon.net
 Helen Klemko, Crystal Ball Editor.....
 e-mail: ncccrystalball@gmail.com

The National Museum of Cambridge Glass



Located at 136 S. 9th Street in downtown Cambridge, OH
 Wed-Sat 9 a.m. - 4 p.m. - Sunday Noon - 4 p.m.
 General Admission \$5 - Seniors & AAA members \$4
 NCC Members and children under 12 FREE



PRESIDENT'S MESSAGE

2013 Convention – NCC 40th Anniversary

The 2013 Benefit Auction was perhaps the best in overall quality since its inception in 1974. For the third year in a row, a new record for total sales was set - \$62,250 for 2013. The proceeds from the Benefit Auction play an important role for NCC reaching its annual financial goals. I want to thank the Auction Committee and the many volunteers who helped make this year's auction a huge success.

With the auction behind us, it is time to begin planning for the 2013 Convention. Convention Director, Diane Gary, continues to make final preparations, but many of the details have been determined. The theme of the 2013 Convention focuses on the 40th anniversary of NCC. The meals, decorations, and educational programs have been selected to highlight this significant milestone and the many achievements of our great organization. After the banquet on Saturday evening, Diane is organizing a program to memorialize the founding of NCC. During the first year following its inception, NCC grew to approximately 275 members. If you were part of this original group of members and are willing to participate in the Celebration Program at this year's convention, please contact Diane at 937-845-3748 or dhgary@msn.com.

There are a few significant changes to the 2013 Convention schedule that must be highlighted. First, the glass show opens later on Friday at 4:30 pm. The biggest change is the timing of the banquet and the Annual Meeting. The banquet will be held on Saturday evening and the Annual Meeting will be held on Friday. In addition, the Glass Show will be open on Sunday from 11:00 am to 4:00 pm. Please look for more details about the 2013 Convention in future issues of the Crystal Ball.

Each year during the third weekend of February, Max Miller hosts the Houston Glass Show in Rosenberg, TX. Twenty-three of the best elegant and Depression glass dealers were set up at this year's show. On Friday evening, several eager shoppers began lining up early for the show's opening at 6:00 pm. Once the show opened,

everyone scattered in different directions hoping to find new acquisitions for their collections. Given the size of the show and the large quantity of glassware being displayed, it took more than one hour to shop the inventory of all the dealers. Several premium pieces of Cambridge glass were available for purchase. Some of the most interesting items included a Rubina water pitcher with lid, a Light Emerald handled vase etched Dresden Rose, two crystal nude banquet goblets gold encrusted Rose Point, a Carmen nude cordial, a Royal Blue flying lady bowl, a Gold Krystol ball jug gold encrusted Portia, a Blue Caprice alpine doulton jug, an Ebony Everglade tulip bowl, and an Amethyst ball jug etched Apple Blossom with gold highlights. Several NCC members attended Friday evening's grand opening. It appeared everyone added at least one piece of Cambridge glass to their collection. I greatly enjoyed visiting with NCC members Bob and Margaret Downing, Jeannie and Freeman Moore, Gwenell and Scott Pierce, Norman Woodson and Brady Boudreaux, and Dave Small.

Annual Fund contributions are arriving daily. Thank you, to those members who have generously contributed to the 2013 Annual Fund. If you have not returned your Annual Fund gift and Board of Directors election ballot, please do so at your earliest convenience. Supporting the Annual Fund enables NCC to maintain and operate a premier glass museum which draws thousands of visitors each.

David Ray
westervillesh@hotmail.com

“Happy 40th Birthday NCC”

**National Cambridge Collectors, Inc.
40th Annual Convention
Thursday, June 20st through Sunday, June 23th, 2013**

Advance Registration Form

Please complete the Registration Form and return it no later than June 1, 2013. (Registrations post-marked after June 1, 2013 will incur a late fee. See below for cancellation policy.) Send your check payable to National Cambridge Collectors, Inc. along with this completed registration form to:

**National Cambridge Collectors, Inc.
Convention Registration
P. O. Box 416
Cambridge, Ohio 43725-0416**

Each person registering for the convention must pay the \$25.00 registration fee regardless of which events will be attended. The registration fee includes admission to the NCC Glass Show and Sale, all other scheduled events and a convention packet. Please register for all events you plan to attend, including those offered at no charge. For children under ten years of age, there is no registration fee; however, they will not receive a convention packet and must pay for any meals they attend.

Show dealers and President Circle members – there will be no registration fee; however, there will be a limit of two free registrations per Show Dealer.

Please list each person registering separately. Names should be given as you wish them to appear on your name badge. Please provide your NCC, Inc. membership number on the registration form. If registering for more than four persons, please list additional members on a separate sheet.

If you would like to receive an email confirmation receipt of this registration form, please list your email address and/or a telephone contact number. **This is the only way we can provide confirmation of your registration.**

Cancellation Policy

Written Cancellation up to 30 days before first convention event – full refund.

Written Cancellation up to 15 day before first convention event – full refund less \$10 handling fee.

Written Cancellation up to 5 days before first convention event – refund meals only.

Written Cancellation less than 5 days before first convention event – no refund.

*National Cambridge Collectors, Inc.
Advance Registration Form
June 1, 2013 - Registration Deadline*

<i>Name of Conventioneers</i> <small>(Please print legibly as you wish it to appear on your Name Badge)</small>	<i>Membership Number</i>	<i>First Convention</i>	
		Yes	No
		Yes	No
		Yes	No

Address: _____

Email address _____ *Phone Number (____)* _____
(Registration confirmation will be sent via email or by telephone call when the above information is provided)

<i>ACTIVITY</i>	<i>FEE</i>	<i>NUMBER ATTENDING</i>	<i>TOTAL</i>
<i>Registration (postmarked by June 1)</i>	\$25.00		
<i>Late Registration (postmarked after June 1)</i>	\$30.00		
<i>Dealer or President's Circle</i>	NA		
<i>Cocktail Hour and Picnic at Pritchard Laughlin Grounds*</i> <small><i>Picnic Fare including Fried Chicken, Vegetarian Lasagna, Cole Slaw, Baked Beans, Lemonade, Iced Tea, and Water.</i></small>	\$13.00		
<i>Cocktail Reception and Buffet</i> <small><i>(Menu not finalized).</i></small>	\$17.00		
<i>Cocktail Reception and Banquet at Pritchard Laughlin Galleria*</i> <small><i>(Menu not finalized)</i></small>	\$30.00		
<i>Optional Donation to NCC for</i> _____ <small><i>(i.e. museum acquisition, endowment fund, etc.)</i></small>		<i>Total</i>	

For Information and Planning Purposes Only. Please indicate how many persons will attend the following events:

First Time Orientation and Coffee with Cambridge (Please circle number attending) 0 1 2 3 4

Major Field(s) of Collecting _____
(This information will appear in the Convention Packet.)

* Meals include iced tea, coffee, taxes and gratuity. Cocktails are available for an additional charge. Please contact Diane Gary at dhgary@msn.com if special meals are required due to dietary restrictions.

“Happy 40th Birthday NCC”

PROPOSED 2013 CONVENTION SCHEDULE

THURSDAY, JUNE 20

9:00 am – 11:00 am	NCC Board of Directors Meeting	National Museum of Cambridge Glass
3:00 pm – 5:00 pm	Glass Show Dealers Unload into Exhibit Hall -- No glass unpacked	Pritchard Laughlin Exhibit Hall
6:00 pm – 7:30 pm	Opening Picnic, Meet the Board	Pritchard Laughlin Galleria
7:30 pm – 8:30 pm	Refired Glass: Rubina, Sunset, & Carmen	Pritchard Laughlin Conference Room

FRIDAY, JUNE 21

6:30 am – 4:30 pm	Dealer set-up for the Glass Show	Pritchard Laughlin Exhibit Hall
8:00 am – 9:00 am	Preparation for Glass Dash – volunteers welcome	St. Benedict’s Gymnasium
10:00 am – 11:00 am	First Timers Meeting	Pritchard Laughlin Civic Center
1:00 pm – 2:00 pm	Program - Carmen	Pritchard Laughlin Conference Room
3:00 pm – 4:00 pm	Program – Candlelight	Pritchard Laughlin Civic Center
4:30 pm – 6:30 pm	Glass Show	Pritchard Laughlin Exhibit Hall
6:30 pm – 7:15 pm	Cocktail Reception	Pritchard Laughlin Galleria
7:15 pm – 8:30 pm	Dinner	Pritchard Laughlin Galleria
8:30 pm – 9:00 pm	Capital Campaign & Awards	Pritchard Laughlin Civic Center
8:30 pm – 9:00 pm	Annual Meeting	Pritchard Laughlin Galleria
9:00 pm – 9:30 pm	Bring & Brag and Glass Identification	Pritchard Laughlin Conference Room

SATURDAY, JUNE 22

7:00 am – 8:30 am	Glass Dash – Early Birds	St. Benedict’s Gymnasium
8:30 am – 11:00 am	Glass Dash – Regular Admission	S t. Benedict’s Gymnasium
11:00 am – 5:00 pm	Glass Show	Pritchard Laughlin Exhibit Hall
1:00 pm – 3:00 pm	Small Group Discussions	Pritchard Laughlin Conference Room
	1:00 pm – 1:45 pm Rose Point & Flower Frogs	
	2:00 pm – 2:45 pm Caprice and Swans	
5:30 pm – 6:30 pm	Cocktail Reception	Pritchard Laughlin Galleria
6:30 pm – 7:30 pm	Banquet	Pritchard Laughlin Galleria
7:30 pm – 9:00 pm	Program “Birthday Bash”	Pritchard Laughlin Galleria

SUNDAY, JUNE 23

11:00 pm – 4:00 pm	Glass Show	Pritchard Laughlin Exhibit Hall
1:00 pm	Cambridge Glass Worker Reunion	Pritchard Laughlin Galleria

A Look Back in Time 1934 by Mark Nye

"Those seeking to add pieces of interest to their post-Repeal glassware should see the Cambridge Glass Company Line. Pressed crystal bottles for the liquid diet are made in a variety of sizes in two types of shapes – a rounded and a square form, while the stoppers of both are in keeping with the type of bottles.

Another group of interest is their Nautilus line. This has a cordial, wine, a whiskey bottle and an iced tea jug with tumblers and glasses in keeping with each of these types. All of these bottles are rounded, reminding one of the Nautilus with its circular ribbings for both the body and the stopper. The spout is drawn directly from the body, while the handles are placed in a rather squared effect at the top. The cordial glasses are fairly tall stemmed while the other glasses are footed tumblers in varying sizes, depending on the bottle of the set to be made up. In this same line we have sugar, creamer, and pepper and salt shakers with chromium tops that carry out the idea of the larger pieces.

In stemware they are showing a blown bowl with a squared stem in a variety of cuttings and etchings that range from the simple classic to the modern Neo-classic. Swirl cuts and swag effects vie with pineapple and simple-line cuttings. They are also showing several Val St. Lambert and Waterford types of cuttings in a full range of stemware." **CROCKERY AND GLASS JOURNAL February 1934.**

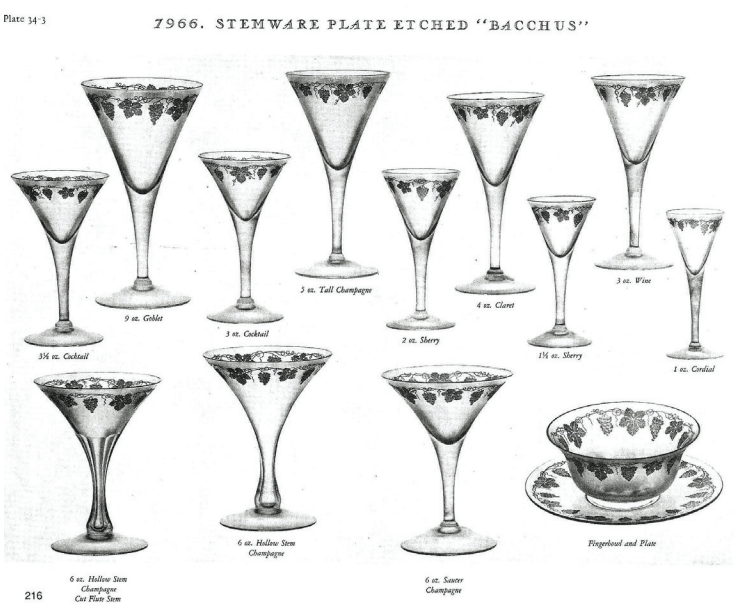
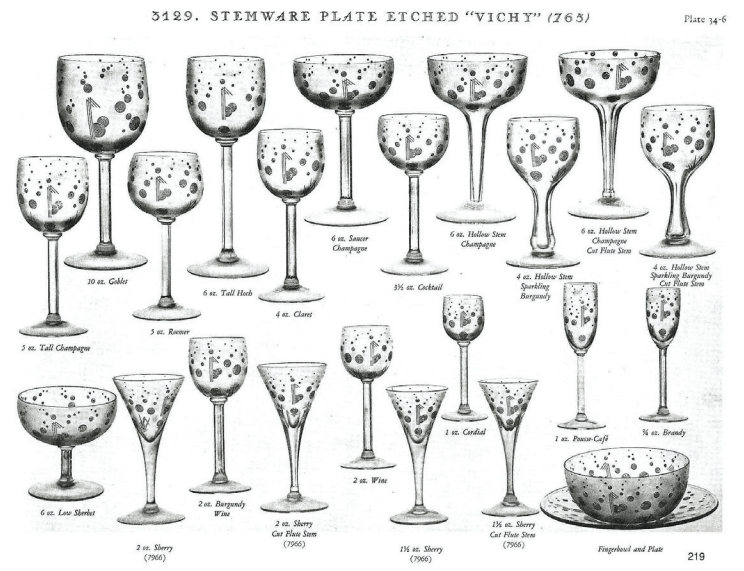
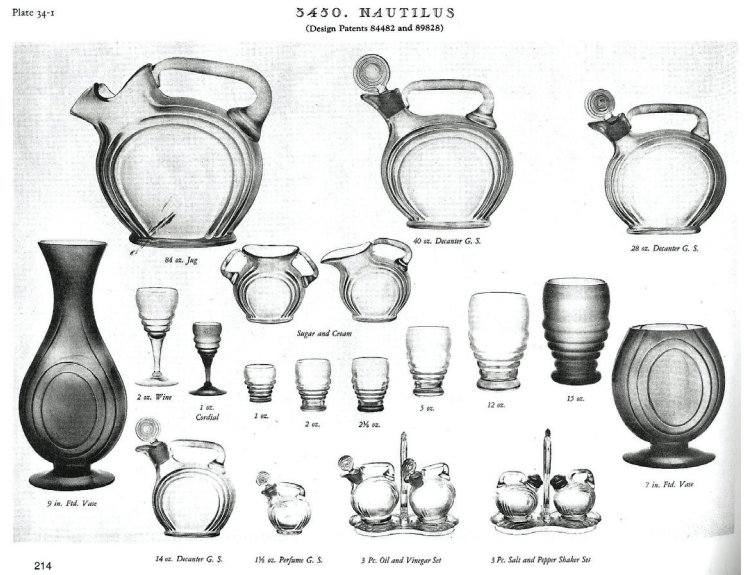
"Vichy By Cambridge --- These blown bowls on square stem, etched with myriad of bubbles, modern in conception, meet every standard of taste. In every wanted size, shape, and the design duplicated in flatware and other pieces. 'Vichy' will rise to new heights of popularity, the quality and price most appealing." Cambridge Advertisement – **CROCKERY AND GLASS JOURNAL – April 1934**

"Quite a number of new glass items are to be seen at the Cambridge Glass Co. Square decanters plain, etched or with heavy cuttings, also labeled with Scotch, Rye or Gin labels. Decanters and bottles of all types and shapes either decorated or plain that leaves you plenty of choice, no matter what the tastes of your clientele be. For home serving, and the coming seasons promise much more than what has been done in the past, they have an array of relish dishes in three, four, five and six compartments. There are plenty of shapes and an array of decorations which adds much to the sales value. Besides this, they have marmalade dishes and mustard dishes, all to help in setting up for home entertaining. They have also brought out a line of buffet plates in the Everglade, Mount Vernon and Martha Washington patterns.

The have a modern line with a square stem and a Bubble etching called 'Vichy' made up in stemware and flatware. It is really a grand line and the etching adds much that is desirable to the simple severe shape.

For liqueur service they have a handled cordial set ...colored glasses and a crystal tray that makes an excellent retailer.

Their Gadroon line adds a variety of bowls in different shapes and numerous odd service pieces in colors just as we found in the



A Look Back In Time 1934 - continued

original lineup. The Nautilus line, that we described a few months ago, has taken to tricky cuttings and etchings that greatly enhance the elegant shapes.” **CROCKERY AND GLASS JOURNAL April 1934**

“The popular shape, No. 7966, at the Cambridge Glass Co., is now being offered with a cut stem in a complete line of stemware. Undecorated, these will retail for around \$10.00 the dozen for the goblet. This is really just the beginnings of the possibilities this line offers, for the shape is a simple bell shape tapering down to the cut stem and permits many decorations. These will be presented on the market shortly.”

CROCKERY AND GLASS JOURNAL July 1934

“The honey box – a square dish with a cover in the Gadroon pattern—has been especially designed to fit a box of honey. A ridge around the top of the dish holds the box, while a knife run around inside loosens the comb and it drops into the dish. The ridge makes it impossible for the box to slide into the dish, and the height of the dish fits the honey square so that the honey is kept in the comb.

They are also showing a dish for strained honey. This is round, with a cover, and is slotted to admit a ladle. This dish may also be used as a marmalade jar.

An early morning scene, with mallard ducks flying over a background of the sun rising over a blue lake, edged with rushes and cattails, painted in soft colors, decorates a new liquor set by Cambridge. All of the liquor glasses are included, i.e., cocktail shaker, bitters bottle, cigarette box and ash tray. This set is very beautiful as well as very unusual.” **CROCKERY AND GLASS JOURNAL September 1934**

Editor’s Notes:

As indicated above, all of the preceding items were taken from 1934 issues of “Crockery and Glass Journal,” one of the leading trade journals of the time. It would have been widely read by both wholesale buyers and manufacturers.

Neither the Vichy etching nor 3129 stemware on which it is shown in a 1934 Cambridge catalog supplement (included in the NCC 1930-34 Cambridge Catalog reprint) are easily found today. Apparently the etching did not prove to be a popular one and hence, little was produced.

The only illustration of 7966 stemware with a cut stem is shown on a page in the 1930-34 Cambridge catalog and described as a “Cut flute stem.” Whether or not this is the cut stem referred to in the Crockery and Glass Journal item is unknown. On the catalog page the line is shown etched Bacchus, one of the several grape etchings produced by Cambridge.

While plates depicting ducks and swamp scenes did survive, none exactly match the scene described in the September 1934 item.

The items not illustrated with this article can be found in the 1930-34 Cambridge Catalog reprint.

REMINDERS: If you have an address change, please let us know. I know it is a busy time when you have to pack and move, but put NCC on your list of “Things To Do”. Also, if you are spending your winters in a warmer place, send us your temporary address so we can make sure you receive the Crystal Ball. Then, let us know when you return home.

Also, the email address for the Editor of the Crystal Ball has changed. It is now ncccrystalball@gmail.com.

Many Friends helped during the
Auction setup.



Tally Ho

by Mark Nye

The following article was adapted from the program presented at the 2012 NCC, Inc. Convention.

The Tally Ho line had its beginning in early 1932 when orders were cut to use molds from some old stemware lines for a new line of stemware to be known as 1402 - Tally Ho. Design patent applications for the pressed stemware and flatware were filed August 12, 1932 and patents were granted that following fall. The design patent application for blown Tally Ho stemware was not filed until February of the following year and in early May 1933 was granted.

The first mention of the Tally Ho line in the trade journals came in September 1932 and featured the cocktail shaker. In the October issue of China, Glass and Lamps was this item: "The Imperial Hunt etching by the Cambridge Glass Company on their new Tally Ho patented line is pictured above, it is made in a complete pressed stemware line ranging from the 18 oz. goblet to a 1 oz cordial and also in fancy tableware and novelty pieces in a range of the Cambridge colors as well as crystal."

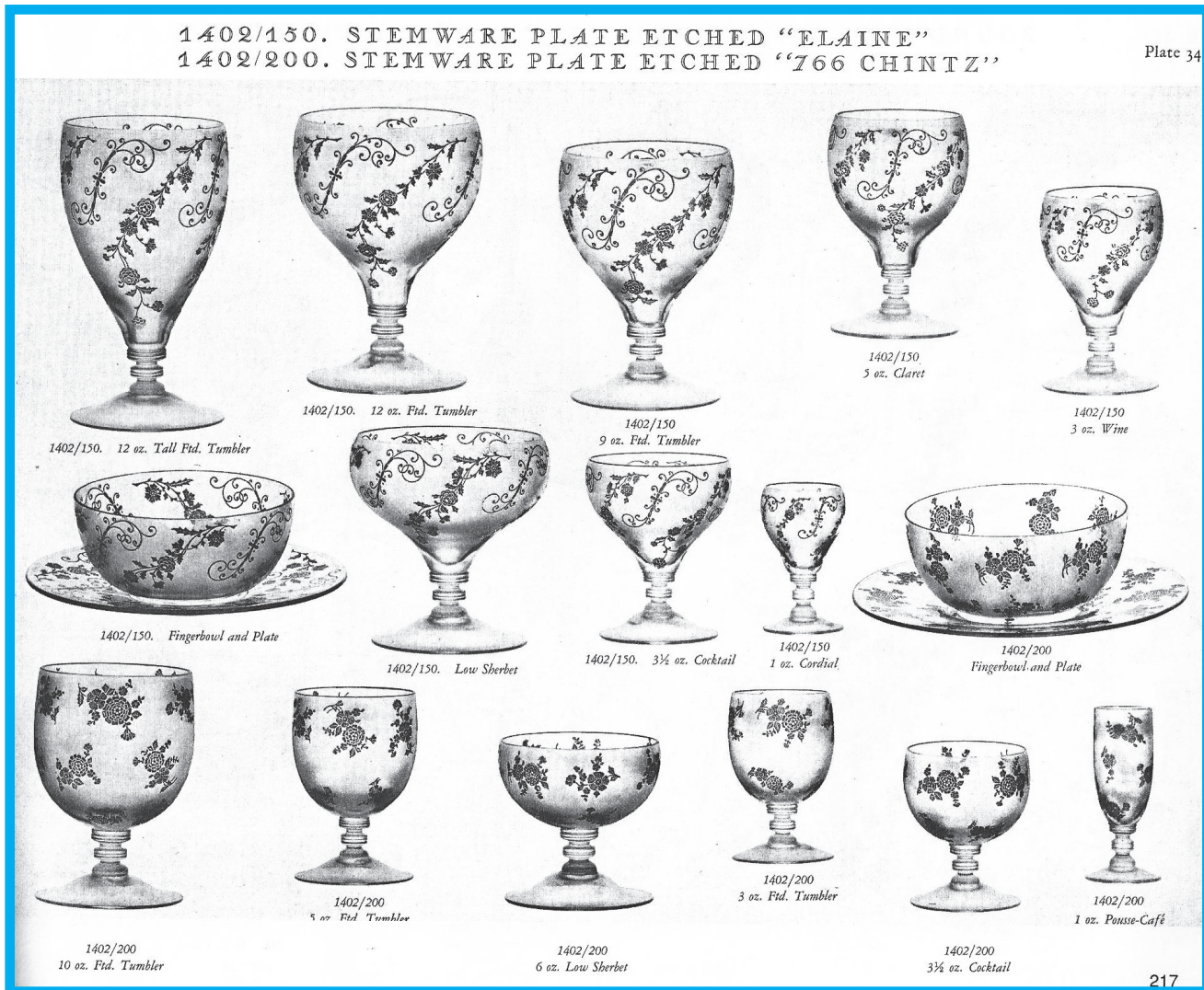
Items regarding Tally Ho continued in the trades through spring 1933. After that there was little mention of the Tally Ho line in the trade journals. This is not surprising since they tended to

feature or report on what was new rather than on continuing lines.

The first appearance of Tally Ho in a Cambridge catalog occurred in 1932 on pages issued as supplements to the 1930 catalog. There were four pages and these illustrated a wide range of items including pressed stemware and dinnerware. Additional pages showing Tally Ho were issued in early 1933 and these offered the blown stemware, 1402/100, as well as other items and two small groups of stemware, 1402/150 and 1402/200.

Among the oddities or "Whys" encountered when studying and collecting Cambridge occurs with the blown 1402/100 Tally Ho stemware. The only know illustrations of the complete line are on catalog pages issued in 1933. The Tally Ho folder, issued circa 1935-36, only pictures the goblet on its cover and makes no mention of the rest of the line. While it was available, at least according to the 1940 Price List, it was not illustrated in the 1940 Cambridge catalog.

The 1402/150 stemware consists of many of the bowl from the 1402/100 stemware on short stems. In some instances it can be difficult to determine if a footed tumbler is from the 1402/100 line or is a piece from the 1402/150 stemware. Many of the pieces from this line found by today's collectors most likely get classified as footed



Tally Ho - continued

tumblers from the 1402/100 line The 1402/200 line also used a short version of the pressed Tally Ho stem in conjunction with the bowl shape used for the 3129 line. (The 3129 stemware line can be seen in the 1930-34 catalog reprint, etched Vichy.) The 1402/200 line is rarely seen today. The author has collected Cambridge stemware for at least 25 years and only has one item in his collection, the 3 oz. footed tumbler, etched Chintz. Neither the 1402/150 nor the 1402/200 line remained in the Cambridge catalog for more than a year or two.

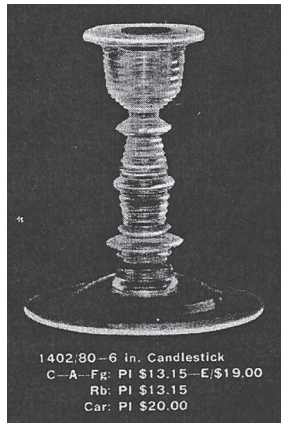


Illustration 1

In the initial offering of Tally Ho in the 1933 catalog supplement, the 1402/80 candlestick appeared as seen in Illustration 1. It was available as a candlestick or as a candelabrum with the addition of a bobèche collar, bobèche and prisms. For reason or reasons that remain unknown, the candle holder was changed during 1934 with the new style using the same number. Like its predecessor, it was also available as a candelabrum. The new version of the candlestick appeared on a 1934 supplemental catalog page and is seen here in Illustration 2.

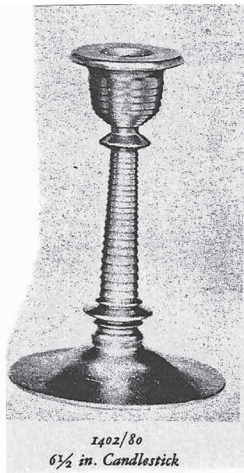


Illustration 2

Two pieces the author has not been able to find a catalog reference for are a syrup pitcher with chrome lid and a 5-3/4 inch candy box and cover, both of which can be seen in the NCC Museum. The syrup pitcher is in Crystal, etched Lorna while the candy box is in Amber with no decoration. Based on the etching, the syrup pitcher most likely dates to the mid 1930s.

When the 1930 catalog and its supplements were replaced, circa 1935-36, an eight page Tally Ho folder was issued. On the cover were illustrations of four etchings, Valencia, Elaine, Minerva and Ye Olde Ivy. On the cover was the statement: "Here are shown four beautiful deep plate etchings which may be had on the articles shown in this folder. Write for prices and discounts." The key words are "may be had." This is especially true for Ye Olde Ivy. Evidence indicates only a limited number of items were ever etched Ye Olde Ivy.



1402/87 Covered Pretzel Jar
Etched Elaine

Next came a precursor to the 1940 catalog and in it were five pages devoted to Tally Ho. These same five pages then appeared in the catalog issued January 1, 1940. World War II took its toll on Cambridge and among the victims was the Tally Ho line. When the first post war price list was issued, it did not include Tally Ho.

From its beginning, the Tally Ho line was produced in Crystal as well as in a number of colors, Royal Blue, Carmen, Forest Green, Amber, and to a lesser extent, Amethyst. Selected items were also made in Moonlight, Gold Krystal and Dianthus Pink. The ice bucket, 1402/52 was made in Crown Tuscan. Moonlight and Dianthus pink was used for flat tumblers while there were two steins made in Gold Krystal. Some pieces were also made in light Emerald as evidenced by the Light Emerald Sugar in the NCC Museum.

Research done since the 2012 NCC convention has uncovered evidence that the reported Tally Ho celery in Willow Blue and etched Apple Blossom is in fact not from the Tally Ho line but rather is the 3400/xxx celery. The Tally Ho celery should have rings in the bottom which the piece in question does not.

From the time Tally Ho first appeared on a catalog page until the last, etchings played an important role in the Tally Ho story. On its initial catalog page, the pressed stemware was shown etched Imperial Hunt and Catawba. In the same group of catalog pages, Minerva, Valencia and Elaine were shown on Tally Ho blanks. It is these three etchings that were most frequently used on Tally Ho blanks. During the early years of the line, an unknown number of blanks were etched Marlene, Yukon, Lorna and Ye Olde Ivy.

The Cambridge office staff was thrifty and sometimes used as scrap paper outdated price lists that had a reverse blank side. One such use was the first page of a Tally Ho Price list. It read in part:

"1402 Tally - Ho Line Which is shown on following 8 pages can be furnished: Plain - in various colors as per headings shown. Etched Valencia, Elaine, Minerva, Catawba, Imperial Hunt, in colors shown in headings of etched price column." The page then went on to indicate the listing included D/982 or Platinum Band on crystal blanks only and D/1007/8 - (Gold Scroll) in colors shown in headings for prices in this decoration. The price list apparently concluded with prices for Valencia, Elaine, Minerva and Chintz, gold encrusted on Crystal blanks only and Valencia, Elaine and Minerva with a gold edge."

Unfortunately a copy of the price list itself is not known. Whether or not a copy survived remains to be seen. Hopefully a copy will be found. It would certainly answer a lot of questions regarding decorated Tally Ho blanks.

Beginning in the late 1930s, Rose Point, Wildflower, Candlelight, Diane and Portia appeared on selected items from the Tally Ho line, plain and gold encrusted, and by the beginning of 1940, these were the only etchings being placed on Tally Ho blanks.

Tally Ho blanks were used for rock crystal cuttings/engravings but not much is seen today. Rock Crystal Engraving No. 690 appeared on the first Tally Ho catalog page, shown on the pressed stemware. Croesus, Achilles and Adonis were used on the 18 inch buffet plate as well as on the twin salad

Tally Ho - continued

dressing bowl and under plate as were a number of other engravings including Lucia, Cordelia, Ravenna, and Laurel Wreath. Rochelle, or No. 857, was offered on a total of 21 Tally Ho blanks that did not include stemware. There were also other engravings used on Tally Ho blanks, the most popular blank being the twin salad dressing set. A late 1930s catalog page offered and illustrated Engraving No. 903 on a limited number of Tally Ho blanks but did not include stemware.

In the NCC Museum display there is a footed divided salad dressing bowl and underplate, in Crystal, engraved with what is best described as shooting stars. The engraving was then gold encrusted. There is no known Cambridge documentation regarding such a piece or cutting and it was most likely done by another company who had purchased the blanks from Cambridge.

Apparently one of the new trends in the early 1930s was a Sunday evening buffet supper. Cambridge met the service needs with at least two sets from the Tally Ho line. As illustrated one consisted of the 18 inch flat edge buffet plate while the other used the slightly smaller cabaret plate which has a turned up edge. Both used a 9 inch comport with seat. One used the pressed 5 oz. low stemmed juice as a holder for ketchup, mustard or other sauces. The other used the two handled sugar renamed whipped cream or small mayonnaise. The retail store could buy any combination of the items used in these two sets to offer to their customers.

The divided salad dressing bowl seemed to be a popular item for further decorating by second parties who purchased the blanks from Cambridge and then "did their thing." Frosting and the additional of silver were two of the more popular treatments of this piece. There are several such pieces in the NCC Museum.

One of the more unusual Tally Ho items that have been found is the twin salad dressing bowl, to which has been added a chrome fitting and a music box base. The tune it plays is "Let Me Call You Sweetheart" and only plays when the piece is picked up and held. The item does bear its original label and from it we know it was assembled by Thorens, Inc., New Hyde Park, New York. Thorens began operations in Switzerland and is known for its music boxes. It is not known if the piece was intended for use as a twin salad dressing bowl or perhaps as a holder of candy and nuts.

Another company bought the pressed fingerbowl and put a chrome lid on it. It is not known what the intended use of this item was. An example is in the NCC Museum

Cambridge decorates used on Tally Ho blanks include D/1007, sometimes called Lace. It will be seen in gold on blown stemware and other pieces,

usually on colored blanks. When done in gold, it is known as D/1007-8. When done in colored enamel, it is usually on Crystal blanks and is simply referred to as D/1007. This decorate itself may be in one color enamel and a rim band in a different color enamel. D/1008 consists of enamel rim bands and it use maybe limited to Tally Ho blanks. Various colors will be found.



Goblet - E758 GE Chintz

On display at the NCC Museum is a Crystal Tally Ho punch bowl decorated with an enameled Hunt Scene, Decorate No. D/990, done in colored enamels. This combination would date to the middle 1930s and was probably produced in a limited quantity.

Cambridge apparently did use a frosted decoration, similar to the decoration known as Alpine seen on Caprice, on Tally Ho blanks. A fruit saucer with the plain portion frosted is known and it bears a Cambridge label. If the piece had been frosted by an outside company, the label would not be there since where it is, it would have been covered by wax during the decorating process and hence destroyed.

Farber Brothers purchased the standard Tally Ho ice pail, in all the major colors, for use in the Krome Kraft Line.

Some of the Tally Ho molds were junked in the early 1940s. The balance of the molds remained at the Cambridge factory until they were acquired in 1960 by Imperial Glass Corporation as a part of the total mold purchase. During the Imperial liquidation sale, three molds were acquired by Summit Art Glass, these being the coffee cup, punch cup and No. 76 candlestick. These molds were never used by Summit and were later acquired by NCC, Inc. The balance of the Tally Ho Molds remaining at Imperial went to Indiana Glass where their ultimate fate was the scrap heap. Thus the Cambridge Tally Ho saga comes to an end.

Two handouts were made available to those attending the Tally Ho program presented at the 2012 NCC, Inc. Annual Convention.

The first was a listing of the Tally Ho line and the colors in which each piece can be found. The second was also a listing of known Tally Ho items and indicated in which Cambridge catalog(s) each piece appeared. The latter listing also serves as a master list of the Tally Ho line. Anyone wishing a printed copy of either or both should send a request, along with a self addressed stamped envelope to:

NCC, Inc
Tally Ho Request
PO Box 416
Cambridge, OH 43725-0416

Requests without an SASE will not be filled nor acknowledged. Please allow two to three weeks for delivery.



1402/3 10 oz. goblet silver decoration by Rockwell

These listings may also be had via email in PDF format. Send requests for email copies to Nyetowers@att.net.



**National Cambridge Collectors Inc.
cordially invites you to the
Glass Show and Sale
celebrating the 40th anniversary of
the founding of NCC.**

June 20 – 23rd, 2013

**Pritchard Laughlin Civic Center
Interstate 70, Exit 176, 1/8 mile East on
Route 40, Cambridge, Ohio**



On behalf of the National Cambridge Collectors, we are pleased to announce this year's convention with glass show and sale featuring Cambridge's beautiful red glass. This year we are kicking off the celebration with a picnic at the Pritchard Laughlin Center Galleria. This will be an opportunity to meet and talk with the Board of Directors. Following dinner will be a program on the creation of the red glass and the refiring process used to create Carmen, Rubina, and Sunset glass.

Over the next two days, there will be programs featuring Carmen and the Candlelight etching. There will be small discussion groups on Saturday afternoon allowing each member to participate in a question and answer session on the topics of swans, flower frogs, Caprice, and Rose Point. Please note that all events are at the Pritchard Laughlin Center.

We are still in need of volunteers to create a table centerpiece for Saturday nights' banquet. Please contact Jeanne Moore if you would like to contribute a centerpiece. (jeannie_moore@verizon.net 972-814-6651).

Friday, June 21st

First Timers Meeting
Convention Registration at Civic Center
Programs on Carmen, Candlelight
Opening of the Glass Show and Sale
Annual meeting, Glass ID, Bring & Brag

Saturday, June 22nd

Glass Dash at St. Benedict's
Glass Show and Sale
Small Discussion Groups
Banquet
Birthday Bash Celebration

Sunday, June 23rd

Glass Show and Sale
Workers' Reunion





by Larry Everett

This report is provided to keep members up with what's happening on the world's largest Internet Auction site. It is not meant as an educational tool, nor as a pricing guide, and we cannot guarantee the accuracy of listings herein.

Greetings from eBay land! Thanks to my many friends that send news to me at: heartlamps@sbcglobal.net.

Rose Point:

Let's start off with a bargain! A pair of 1528 – 10” vases sold for \$71. A rarely found 498 – 2 oz. tumbler (commonly called a whiskey) finished two fingers shy of \$200 (\$195). Also hard to find is the 495 – 9 1/2” crescent salad plate which sold very reasonably at \$76.65.

Other Etchings:

A set of six Willow Blue Apple Blossom 3130 – 10 oz. footed tumblers sold for \$102.50. A hard to find in Amber, Diane 3400/92 – 32 oz. ball shaped decanter made \$165. A Peach-blo E520 - No. 912 - 10 1/2” casserole and cover from the round line ended at \$180. A wonderful Crystal Daffodil #306 – 6” covered candy sold for \$75. A wonderful No. 513 - Draped Lady Large Figure Flower Holder (Peach-blo) sitting in a Cleo (Peach-blo) No. 856 - 11” Bowl made someone very happy at \$138.50. A rare Cleo (Peach-blo) 1917/19 - 5 oz. Cream and Sugar ended at \$22. A lovely pair of Willow Blue Cleo 9403 - 12 oz. Aero Optic Tumblers sold for a mere \$17.49. A rare Amber E Gloria 1228 – 9” pillow vase flew to \$639.99. An incredibly wonderful Pink 3900/671 - Ice Bucket with Chrome Handle, E Golf Scene ended at the 19th hole with a score of \$308.33.

Miscellaneous:

A Moonlight Draped Lady Large Figure Flower Holder ended at \$357.52. A “must have” for every Cambridge glass collector is a 1015 - Cambridge Glass Pyramid Advertising Sign. An example in Moonlight commanded \$157.50. A wonderful pair of Crown Tuscan #50 – 8” dolphin candlesticks brought \$177.50. A stunning pair of No. 320 - 7 oz. Old Fashioned Cocktails, Blue & White enameled D/Yale Bulldogs with enameled under plates ended at \$202.50. A #823 – Peach-blo 12” Centerpiece for 4 Candles & No. 509 - 2-kid Figure Flower Holder (Peach-blo) sold for \$294. A magnificently rare Peach-blo No. 863 - 10” Deep Aquarium from the Decagon Line flew to \$325. A Crown Tuscan No. 274 - 10” Bud Vase with stunning Charleton decoration brought \$109.50. Also a lovely pair of SS46 - Crown Tuscan Sea Shell 7 1/2” Flower Holders with perfect Charleton Roses Décor that ended at \$269 for the pair. A rarely seen Rubina 10” flat rim bowl with honeycomb optic and an unusual “chipped glue” finish sold for \$70.



Crown Tuscan #50 – 8” dolphin candlesticks



SS46 - Crown Tuscan Sea Shell 7 1/2” Flower Holders with Charleton Roses Décor



Crystal Daffodil #306 – 6” covered candy



Cleo 9403 - 12 oz. Aero Optic Tumblers



Rose Point 1528 – 10” vases



#863 - 10” Deep Aquarium from the Decagon Line



E Gloria 1228 – 9” pillow vase



#823 – 12” Centerpiece for 4 Candles & No. 509 - 2-kid Flower Holder

2013 Auction Results

1	305	55	95	109	50	163	50	217	25	271	125	325	45	379	25
2	65	56	120	110	50	164	210	218	45	272	40	326	60	380	45
3	500	57	70	111	110	165	80	219	55	273	20	327	50	381	10
4	130	58	100	112	225	166	450	220	45	274	255	328	80	382	40
5	425	59	135	113	65	167	190	221	40	275	85	329	30	383	130
6	45	60	600	114	100	168	130	222	215	276	25	330	40	384	110
7	35	61	85	115	120	169	35	223	175	277	190	331	60	385	55
8	400	62	250	116	60	170	625	224	145	278	30	332	95	386	75
9	75	63	30	117	100	171	90	225	150	279	300	333	35	387	35
10	325	64	625	118	90	172	70	226	275	280	105	334	25	388	95
11	110	65	65	119	40	173	125	227	220	281	375	335	30	389	35
12	110	66	40	120	775	174	375	228	235	282	150	336	95	390	125
13	130	67	325	121	85	175	285	229	55	283	135	337	145	391	90
14	150	68	200	122	700	176	370	230	20	284	25	338	70	392	75
15	50	69	140	123	450	177	95	231	150	285	75	339	80	393	10
16	1100	70	50	124	500	178	85	232	55	286	15	340	50	394	75
17	50	71	125	125	140	179	85	233	150	287	50	341	165	395	30
18	50	72	165	126	140	180	450	234	220	288	200	342	200	396	150
19	105	73	130	127	25	181	375	235	130	289	65	343	360	397	80
20	140	74	400	128	245	182	135	236	40	290	95	344	30	398	60
21	105	75	65	129	100	183	55	237	115	291	40	345	95	399	45
22	80	76	65	130	55	184	80	238	165	292	65	346	55	400	225
23	135	77	85	131	45	185	65	239	95	293	25	347	165	401	45
24	260	78	190	132	625	186	325	240	65	294	25	348	10	402	50
25	75	79	75	133	110	187	105	241	55	295	145	349	70	403	20
26	175	80	50	134	30	188	375	242	275	296	75	350	35	404	185
27	140	81	550	135	55	189	185	243	115	297	25	351	65	405	40
28	1300	82	100	136	175	190	180	244	55	298	10	352	50	406	25
29	25	83	90	137	75	191	70	245	60	299	75	353	60	407	235
30	250	84	725	138	45	192	70	246	90	300	165	354	150	408	20
31	195	85	70	139	100	193	140	247	30	301	50	355	85	409	10
32	65	86	325	140	125	194	1250	248	85	302	75	356	100	410	70
33	40	87	200	141	40	195	135	249	50	303	400	357	110	411	80
34	150	88	85	142	145	196	325	250	145	304	45	358	50	412	40
35	80	89	95	143	60	197	100	251	50	305	55	359	65	413	25
36	25	90	975	144	1300	198	160	252	55	306	80	360	45	414	10
37	975	91	160	145	110	199	725	253	95	307	100	361	45	415	165
38	70	92	65	146	100	200	75	254	185	308	55	362	45	416	10
39	110	93	220	147	275	201	65	255	370	309	165	363	70	417	10
40	100	94	325	148	30	202	95	256	40	310	35	364	80	418	10
41	70	95	80	149	70	203	105	257	110	311	65	365	35	419	15
42	230	96	105	150	140	204	40	258	110	312	130	366	190	420	80
43	40	97	150	151	20	205	50	259	75	313	65	367	75	421	30
44	130	98	90	152	160	206	45	260	110	314	10	368	25	422	75
45	75	99	65	153	90	207	65	261	155	315	45	369	50	423	60
46	300	100	625	154	120	208	25	262	200	316	80	370	120	424	75
47	120	101	55	155	170	209	25	263	90	317	25	371	20	425	30
48	625	102	150	156	15	210	45	264	30	318	70	372	40	426	60
49	45	103	20	157	225	211	55	265	40	319	45	373	10		
50	600	104	1000	158	35	212	35	266	20	320	40	374	135		
51	70	105	55	159	225	213	55	267	125	321	175	375	50		
52	35	106	265	160	225	214	NS	268	250	322	110	376	50		
53	55	107	625	161	140	215	35	269	375	323	70	377	40		
54	550	108	45	162	170	216	30	270	55	324	325	378	240		

The continuing story that you are about to read is a fictional novel created for the enjoyment of our Friends. Of course it is always possible that some of the items described may surface – never say never.

(In the last chapter, Rich witnessed Marjorie’s special creation being made, plus a mysterious hand in the light.)

As I turned around, I saw many flashes of light, as happened to me earlier. I heard a voice talking to me in the light, but I was still unable to focus. I felt a hand reach out and touch mine. I couldn’t believe it. It was Steve. I said, “Are you all right? Where have you been?”

“Yes, I’m fine, Dad. Remember when you entered the room where the seven-foot Dolphin statues were? I could hear you yelling for me, but I don’t think that you could hear me. I tried and tried to open the glass door. The corridor went quiet as I waited for you, but before long, I heard you talking to yourself about noises and machinery. For a moment, I thought you were losing it. Then, a few minutes later, I heard you say, “Oh, my God, it’s the factory.” I couldn’t believe what you just said. I thought, “Where in the world were you?” Then I heard you say something about the size of the furnaces. It struck me right then and there that my dad is in some kind of time dimension.”

“Well, Steve, you’re absolutely right. You are literally with me at the Cambridge Glass factory. And I believe it’s the 1920s or ‘30s.”

“Dad, this is amazing. It was like I was right there with you. I could hear everything you were saying. Both of you. Dad, where is Mrs. Burt and where are we now?”

“That’s a good question. It looks like we’re near the offices. I need to sit down a minute to think and talk with you. I’ve actually been walking and touching history. To think you were, in one sense, right there with me and I didn’t even know it. When we entered the corridor and thought that was amazing, I think what we’re going to experience here will astonish both of us. Steve, this is it. The workers, production, rooms filled with glass and even the heat. I’m really happy you’re here again to take this walk in time with me. Your timing is near perfect. The Marjorie statue presentation is today. I notice you have better clothes on than you had when we came in.”

“I was going to say the same about you, Dad. How did this happen?”

“All I know is I was looking a moment ago in a lehr, turned around, saw flashes of light, you appear and I have different clothes on.”

“It was similar for me, Dad. I was sitting there listening to you when flashes of light appeared in front of me out of nowhere., and I reached toward the light saying, “Dad, I wish you were here,” when suddenly I felt this hand, realizing it was yours.”

“Well, all I know is that I feel better and look better and there’s a reason for everything.”

We saw a lady walking toward us. It was Diane, the first lady I had met.

“Hello, again, Mr. Bennett. I heard you were coming to the presentation.”

“Yes, I am, and I brought my son, Steve. I hope that’s all right.”

“You are just kidding, aren’t you, Sir? This is going to be a great day for all the Bennetts and our employees.”

I knew right away I had to ask the big question: “Are they here now? That is, Mr. and Mrs. Bennett and Marjorie?”

“Well, certainly, Sir. This is the day we’ve been waiting for.”

I replied, “I’ve been waiting for this moment my whole life.”

Steve spoke up and said, “I think my dad is just happy to be here.”

“Follow me, Gentlemen. You’re about to meet the inner circle of Cambridge Glass. We have two gentlemen out ahead of us I would like you to meet. J.C., Roy, I want to introduce you to two more Bennetts. These two gentlemen are Rich and Steve Bennett from Cambridge. Rich and Steve, this is J.C. Kelly, our factory superintendent, and Roy Boyd, our treasurer.”

J.C. Spoke up immediately and said, “It’s nice to see more Bennetts in the building. Arthur and Martha heard you were coming.”

I said, “It’s nice to meet both of you, but this is Marjorie’s day and I don’t want to take anything away from that.”

Mr. Boyd said, “You’re right. It is truly Marjorie’s day, but Arthur has heard that you like glass and I’m sure you two will have a few things to talk about.”

Diane says that they’re starting to gather in a large room and she will introduce us to the others later, but to stay with her for the ceremony. As we walked into the room, there were approximately 100 people standing and mingling. I started to scan the room and stopped when I saw the most recognizable face in Cambridge Glass. Mr. Arthur J. Bennett with Martha and their daughter, Marjorie. I couldn’t believe it. I was absolutely in awe. The number-one person we’d all talked about in our club for years, and I was about 30 feet away from him.

Just as I pictured, they were very dignified and well dressed. He had a dark blue pinstripe suit on with patent-leather shoes. And she was wearing a dark blue dress with a beautiful pearl necklace. I immediately leaned over to Steve and said, “If Martha only knew about the Cambridge Glass necklaces we’re creating for the museum, how proud she might be wearing one of our creations.”

To our surprise, Mr. Bennett got everyone’s attention by ringing a glass bell made from a Marjorie-etched goblet. He welcomed everyone and appreciated so many of his sales force coming in from out of state to be part of the ceremony.

One thing I noticed immediately about Mr. Bennett was his English accent. He began talking about Marjorie being their only daughter and how he enjoyed being a father and, like any other father, wished he could have been around more than he had. He then turned toward her and said that this gathering was all for her.

“MR. BENNETT MEETS MR. BENNETT”- continued

She was completely unaware. He told everyone he had designed many molds, but he had recently created a very special one.

Several pressers from the factory came out a door pushing a small cart carrying a white lace sheet draped over an object. Mr. Bennett motioned to Marjorie to lift the sheet.

As she pulled it off, she was in total disbelief. She instantly began to cry. She gave both of her parents huge hugs and told everyone she could not believe what she was seeing and how wonderful the piece was. Then she quipped to the crowd, “Red is my favorite.”

The statue was absolutely gorgeous. And to top it off, it had been gold-encrusted Marjorie near the feet and all around the base. I looked at Steve and said, “This is one of the more special moments in Cambridge Glass history,” and I was glad he was at my side.

Mr. Bennett then announced to the crowd that there were refreshments and anyone wanting a closer look at the carmen statue could come forward. Diane immediately spoke up to Steve and me and said, “That means you.”

As we approached the statue, it was the first time I had seen it since I had seen the workers making it. The gold in the etching was the prettiest I had ever seen. Everyone from the mold makers to the decorators created a real masterpiece.

Next in line, Diane introduced us to Marjorie who said she was very pleased we came. I don't think she had been told that we had been in the factory earlier. The most nervous moment of my Cambridge Glass life was about to happen. Diane introduced us to Martha and Arthur. They were two handshakes that will live with us the rest of our lives. They were very pleased we came and had heard we were on a tour of the factory yesterday.

Mr. Bennett said, “I understand you like glass manufacturing. Then we should have a lot in common. If you'd like, Martha and I could take you sometime on our own personal tour of the factory.”

I said, “Yes, Sir. We would be honored to go with you.”

As we were walking away, I asked Steve to pinch me because I couldn't believe what we were just a part of.

Steve replied, “I won't have to. It's real.”

All the many years I collected and had been part of the glass world, this was, by far, my greatest moment. All the tours I'd led at the museum and pointing out Mr. and Mrs. Bennett's pictures and artifacts had finally led to this moment. Flesh on flesh where Mr. Bennett met Mr. Bennett.

(To be continued.)

The 78th Show Sponsored by Del-Mar-Va Depression Glass Club
2013 Show and Sale
**Early American, Pattern, Elegant, Art Deco, & Depression-Era
Glassware, China, Kitchenware, Pottery, Books & Linens**
Special Display: “Vintage American Lamps”
Saturday, April 27, 2013 10am-5pm
Sunday, April 28, 2013 10am-3pm
Duval High School
Greenbelt Road at Good Luck Road, Lanham, MD
Capital Beltway I-95 (Outer Loop) Exit 22A Route 193E Greenbelt/NASA
Capital Beltway I-95 (Inner Loop) Exit 23 Kenilworth Ave. – Right Lane,
To Route 193 East – Greenbelt/NASA (about 2½ miles to Duval H.S.)
*****Glass Identification - Door Prizes – Snacks*****
INFO: 301-565-2361 / 410-263-4192; Email: ybrian@verizon.net; Admission: \$4.00

Imperial & Fostoria
Elegant Glass Show & Sale
Friday, June 7 - Sunday, 9, 2013
Sponsored by Fostoria Glass Society & Nat'l Imperial Glass Collectors' Society
Mollohan Bldg, 901 8th St., Moundsville, WV 26041
(Enter through the north gate of the former West Virginia Penitentiary)
Featuring glassware by Fostoria, Imperial, and many others
Free re-entry all weekend: Fri. 4p-7p: \$10; Sat. 11a-4p & Sun. 11a-3p: \$5
National Imperial Glass Museum
10th Anniversary Celebration
Thur, June 6, 4pm • Rededication Program • Free, Public Welcome
Museum Lawn, 3200 Belmont St, Bellaire, OH 43906
Followed by a Reception at the Bellaire Library Activity Room, 330 32nd St., Bellaire 5-7p
If Inclement Weather: Rededication will be held at the Bellaire Library Activity Room
All-Imperial Glass Auction
Fri., June 7, 7pm (preview 6pm) Convention registrants admitted free
Bellaire Library Activity Room, 330 32nd St, Bellaire, OH 43906
Open to public: no buyer's premium, \$10 adm.; NIGCS members: \$5 adm.
Glass Fest - Glass Sale
Sat., June 8, 9:30a-11:00a • Free Admission
Bellaire Library Activity Room, 330 32nd St, Bellaire, OH 43906
www.imperialglass.org • 740.671.3971 • info@imperialglass.org
NIGCS, P.O. Box 534, Bellaire, OH 43906

ONLY QUESTIONS - NO ANSWERS

By Frank Wollenhaupt (fewvic303@sbcglobal.net)

We recently spent a Saturday cleaning at the museum. As I mentioned last year, it is a great time to study Cambridge glass and understand what our museum is all about. Mark your calendar for early 2014 and give Cindy a call to lend a hand cleaning YOUR museum.

Helen and I recently put together a new show card for the 2013 show & convention. It's post card size so it can easily be mailed out. If you need any to send to your customers or friends, please email me and I will make sure you receive some.

This past weekend was the 2013 All Cambridge Glass auction. It was really a beautiful auction and many items sold above estimates. While at the auction I couldn't help but think about everyone trying to get another great piece to add to their collections. That started me thinking. What about the glass we all have? You know, the sea shell nut cups, the decagon lunch sets, some of the plain stems and many more items. The pieces that we started out with but maybe our tastes have changed and we have packed them away. Now's the time to get it all out and recycle it. Our Museum is in need of inventory. Before long, the bus tours will start again and all the new Cambridge collectors will be looking for just that one special thing to take home to show everyone and talk about the great glass and museum they saw in Cambridge Ohio. Cindy is in need of good CLEAN inventory to stock the museum gift shop. Won't you help?

Diane Gary has spent a lot of time working on this year's convention. It is something special for all of us, it's our 40th anniversary. Yes it's been 40 years since Charlie Upton and 11 other members started the club we now call NCC.

A lot has happened since that beginning. We have experienced a flood that I believe was the best thing that could have happened to us. How can I say that? Take a look at where we are today. If we didn't have the flood to kick us in the pants, we would still be outside of town on RT 40 trying to get people to come and visit us. Yes the flood was devastating but it brought us all together. Everyone pitched in and did what they could. We all got tetanus shots so we could work in the muck that was left. 100's of hours were spent washing and cleaning the glass. We are still finding flood mud in some of the pieces every year when we do the museum cleaning.

After the flood we needed a new home. We bought a piece of ground and were starting to think about building a new museum when our current Museum building became

available. This would put us down town, ½ block from Main Street but we were in a place where the traffic could find us. We also had Cindy and her team that got involved with the city and in turn the city got involved with NCC.

Cindy and her team have been responsible for keeping the Museum clean and accessible to the city. She never, well almost never says NO. So the next time you see Cindy or one of her team members, please let them know how much you appreciate their hard work.

Time to run.....next month I have something exciting to share with you that came out of the Cambridge all glass auction.....that is if Sharon will email me.

Till then, keep on hunting.

2013 Auction Moments



NCC Events

**2013 Convention
June 20-23, 2013**

**November Quarterly Meeting &
Educational Program
November 2, 2013**

If you know about any upcoming glass shows or other glass events, please pass the word on to us at least six to eight weeks before the show dates. These listings are free of charge.

DEALER DIRECTORY

	Connecting Buyers & Sellers!
	Tell us what you are looking for and we help find it.
	CAMBRIDGE GLASS.US
	P. Snyder 740-601-6018
	E-Mail and Find Your Glass!
E-Blast	psnyder@cambridgeglass.us www.cambridgeglass.us
	When you are searching for Cambridge glass, email your request and it is emailed to all members and dealers. P. Snyder, 1500 Edgewood Dr., Circleville, Ohio 43113
Joanne & Janine Bender	
Specializing in Depression Era Glassware We Buy & Sell	
PO Box 1007 Pebble Beach, CA 93953	
831-647-9957	jfdbender@aol.com
831-647-9949	www.benderglass.com
J & L Treasures	
Specializing in Depression Glass Heisey, Cambridge, Fostoria, Morgantown, Tiffin, etc.	
Linda Kilburn PO Box 1257 Burlington, CT 06013	
860-673-4088 (Answering machine - leave message)	
Ohio Valley Antique Mall	
7285 Dixie Highway (Route 4) Fairfield, OH 45014	
Cincinnati's Largest Multi-Dealer Antique Mall Hours: DAILY 9:00 a.m. - 9:00 p.m.	
513-874-7855 www.ohiovalleyantiquemall.com cfaxon@ohiovalleyantiques.com	

Glass Shows

April 6-7, 2013

Lincoln Land DG & Pottery Show and Sale
Springfield, Illinois
Call: 217-546-4790

Email: margaret_davis37@sbcglobal.net

More Info: www.LincolnLandGlassClub.com

April 13, 2013

Liberty Bell Glass Club Spring Show & Sale
Pottstown, Pennsylvania

Email: LBGlassClub@verizon.net

Call: 610-666-7033

April 13, 2013

Nutmeg Depression Glass Club All Glass Show & Sale
Southington, Connecticut

Email: lisabert@cox.net

Call: 860-432-2686

April 20-21, 2013

Great Lakes Depression Glass & Pottery Show & Sale
Madison Heights, Michigan

More Info: www.depressionglassclub.com

April 27-28, 2013

Del-Mar-Va Depression Glass Club
Glass, China & Pottery Show & Sale

Lanham, Maryland

Call: 301-565-2361

April 27-28, 2013

Rocky Mountain Depression Glass Society
Array of Color 39th Annual Show & Sale

Castle Rock, Colorado

More Info: www.rmdgs.com/

Call: 303-722-5446

June 8-9, 2013

Midwest Glass & Pottery Club Show and Sale
Belleville, Illinois

www.midwestglassandpottery.com

June 8-9, 2013

The Fostoria Glass Society of America & The National
Imperial Glass Collectors' Society

Combinded Show & Sale

Moundsville, West Virginia

www.imperialglass.org or www.fostoriaglass.org

June 29-30, 2013

Tiffin Glass Collectors Club
28th Annual Show & Sale

Tiffin, Ohio

www.tiffinglass.org

DEALER DIRECTORY

Dealer Directory - \$24 for 12-months, size limited by box (see below). Includes listing on NCC website.

Advertising Rates:

1/8 page \$15 1/4 page \$20
1/2 page \$30 Full page \$50
(plus \$5 per photograph)

Electronic submissions should be emailed to:

ncccrystalball@gmail.net.

Use Word. Mailed submissions and all payments should go to PO Box 416, Cambridge, OH 43725. Deadline is 10th of preceding month. Ads must be paid in advance. Show listings are FREE; send info to PO Box or e-mail address 60 days before event.

ALADDIN LAMP BOOKS

Aladdin Electric Lamps
SB, 229 pp., \$24.95 to C.Collectors PP.
J.W. "Bill" Courter
brtknight@aol.com
550 Pioneer Ln. Phone 270-488-2116
Calvert City, KY 42029

Max Miller

Elegant Glassware • Books • Fiesta
...and more
THE MARKET PLACE
(713) 467-0450 - BUS 10910 OLD KATY RD.
(713) 461-1708 - RES HOUSTON TX 77043
MMXGLASS@aol.com

Cheshire Cat Antiques

Specializing in elegant depression to mid-century era glass and vintage kitchen glass.

Francee Boches > 305-884-0335
fboches@cheshirecatantiques.com

Pull up a Mouse!
Shop 24 hrs a day at
cheshirecatantiques.com



BAKER FAMILY MUSEUM

805 CUMBERLAND ST.
CALDWELL, OHIO 43724
740-732-6410
bakermuseumnellbaker@msn.com

Wed & Thurs 9-4; Fri - Sat 9-5

Classified Ads - Reach over 1,000 avid collectors of Cambridge Glass

CRYSTAL LADY

1817 Vinton St. Omaha, NE 68108
Bill, Joann and Marcie Hagerty
Shop 402-341-0643 Home 402-391-6730

Specializing in Elegant Glass & Collectibles
www.crystalladyantiques.com

Glen & Carolyn Robinson White Rose Antiques Specializing in Depression Era Glassware

2454 McFarland Road
York, SC 29745

803-684-5685
gandcrobinson@aol.com
whiteroseglassware.com

CRYSTALLINE COLORS

Cambridge • Fostoria • Elegant Glass
Penny Court Mall, Cambridge - 2 booths
Riverfront Antique Mall
New Philadelphia, OH (I-77, exit 81)
Booth #'s 626 and 616

Lynne R. Franks 216-661-7382

GLASS FROM THE PAST

Maureen Gillis



www.glassfromthepast1.com
email: maureen@glassfromthepast1.com

Cherished Collectibles

Shopping 24 hours in our online store
Glassware, Figurines, Collectors' Plates

www.cherishedcollectibles.com
Elegant and Depression Era Glass

TWEAK COLLECTIBLES

Specializing in Elegant Glass
BUY & SELL
WANTED: CAMBRIDGE TURKEYS
417-742-3653
btummons@aol.com

VIRTUALATTIC AT THE GLASS CHALET

SPECIALIZING IN ELEGANT DEPRESSION ERA GLASS
Sandra L. Bridwell-Walker PO Box 3448
William P. Walker Cleburne TX 76033-3448
Phone: 817-202-0940 www.virtualattic.com
Sandy's Cell: 817-559-0328 virtualattic@sbcglobal.net
theglasschalet@sbcbglobal.net
Bill's Cell: 817-357-7084

Daugherty's Antiques Jerry and Shirley Antiques & Collectibles-Mostly Glass

www.daughertys-antiques.com
email: sdaugh2515@daughertys-antiques.com

Shows & Mail Orders 2515 Cheshire North
402-423-7426 (evenings) Lincoln, NE 68512

THE GLASS HOUSE ANTIQUE MALL Furniture, Pottery, Glass Antiques and Collectibles I-70 Exit 146, East on SR 40

8825 E. Pike
Norwich OH 43767 TEL 740-872-3799

Milbra's Crystal Buy & Sell

Replacement and Matching
Milbra Long (817) 645-6066
Emily Seate (817) 294-9837
PO Box 784
Cleburne TX 76033

Specializing in
Cambridge
Fostoria, Heisey
and others

E-mail: longseat@sbcglobal.net
www.fostoriacrystal.com

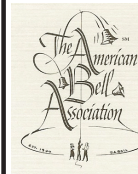
ISAACS ANTIQUES

(740) 826-4015

See our booths in Penny Court Mall in Cambridge and at White Pillars Antique Mall (Route 40, one mile west of I-70 Norwich, OH • Exit #164)

The American Bell Association International, Inc.

7210 Bellbrook Drive
San Antonio, TX 78227-1002
www.americanbell.org



MARGARET LANE ANTIQUES

2 E. Main St. New Concord, OH 43762
Lynn Welker (740) 826-7414

Cambridge Glass Matching Service
Hours: Mon-Fri 10-12 AM, 1-5 PM
or by appointment

Our House Antiques



Linda and David Adams
Las Vegas, NV
1-800-357-7169



www.OurHouseAntiques.com
email: David@OurHouseAntiques.com

National Cambridge Collectors, Inc.
PO Box 416
Cambridge OH 43725

website: www.cambridgeglass.org
e-mail: ncccrystalball@gmail.com

Friends of Cambridge – Annual Fund

NCC exists through member giving using an Annual Fund system to raise operating funds and to ensure the preservation of Cambridge glass for future enthusiasts. The Annual Fund uses a common member "renewal" date and NCC sends out Annual Fund materials to everyone once a year. There are no monthly reminders or monthly renewal dates. The Annual Fund is NCC's primary means of support and all Annual Fund gift recognition levels are per household and include membership for all adults within the household. Additionally, each household will receive a subscription to the Crystal Ball newsletter, unlimited admissions to the museum, and rights to vote in elections for the Board of Directors. Multiple households at the same address are welcomed. NCC is a 501C(3) organization and Annual Fund gifts are allowed as a tax deduction under Section 170 of the Internal Revenue Code.

Levels of Membership

Patron	\$35
Benefactor - Century	\$100
Benefactor - Mardi Gras	\$200
Benefactor - Japonica	\$500
President's Circle	\$1,000

President's Circle includes Convention registration for two members in the household and one copy of any new NCC publications.

The National Museum of Cambridge Glass

Located at 136 S. 9th Street in
downtown Cambridge, Ohio
Wed-Sat 9 a.m. - 4 p.m.
Sunday Noon - 4 p.m.
General Admission \$5
Seniors & AAA members \$4
NCC Members and children under 12
FREE

