



# Cambridge Crystal Ball

Published by the National Cambridge Collectors, Inc. as a resource which informs, invites and inspires the continued preservation of the glass produced by the Cambridge Glass Company of Cambridge, Ohio for future generations.

Issue No. 455

February 2012

## A Window Into The 2012 NCC Benefit Auction by Jack & Elaine Thompson

We believe we have another wonderful selection of beautiful glass again for you in this 2012 edition of the auction. Hopefully you have been surveying the catalog published in last month's issue, have been perusing the great pictures posted on the web site, and have a nice lengthy want list formulated. If not, then it's time to get busy, because it's right around the corner. From etchings to opaques to nudes to the rare and unusual to Rubina to Caprice to lamps to cuttings to Near Cut and everything in between, there should be something to suit your taste, whatever that might be. It is our objective to provide as wide a variety of Cambridge glass as possible. While it is our goal to make as much money as we can for our favorite club, we strive to have something that appeals to every type and sophistication of collector.

A wonderful selection of nudes awaits you, including difficult-to-find Royal Blue & Topaz Roemers, a set of Smoke Table Goblets, Rose Point Gold Encrusted Crown Tuscan candlesticks and an absolutely stunning pair of #3011/1435 Crown Tuscan epergnes with crystal bobèches and C.T. vases. Wow! Rubina is back this year, and we have 5 different pieces, all with beautiful color. We love to talk about the rare and unusual items as they are different each year (if they were the same, they wouldn't be rare and unusual, now would they). How about a #1316 - Peach-Blo Rabbit Box & Cover (w/fur detail), or a Mardi Gras vase and bowl, a #73 - Amethyst Mount Vernon Butter Tub & Cover, a #112 - Amberina 7" Lattice Edge Plate, a #3400/102 - Amethyst 5" Globe Vase, Satin, White Enamel Grape Décor (dubbed "Graponica" at a 1970s NCC convention), a #1704 - Chantilly 4 1/2" Hat, a pair of #437 candlesticks with a Teal Enamel Décor, a #3700 - Pistachio 9 oz. Goblet, a #1144 - Crystal 5-1/2" Ball w/ Eagle Attached, a #3400/134 - Amethyst 13" Vase, just to name a few.

Rose Point collectors will find a number of beautiful pieces they might not normally have an opportunity to acquire. A complete #420 Pristine 18" Buffet Supper Set, a #3130 Tall Sherbet, a #3105 Ftd. Ice Tea and Sherbet, both with the bowls etched, a #163 - Pristine Bone Plate and one of my favorite Cambridge blanks of all time - the #225 - Pristine 9 1/2" 2-Part Blown Bowl. Wow, again!!

There are many gorgeous opaques this year with a #78 - Azurite 10" Vase, Black Enamel Peacock Décor, a #279 - Ebony 13" vase, white gold encrusted #705, a #515 - Ivory Rose Lady Figure (no flower holder), a

#104 - Jade 6" Candy Box & Cover, Etched #705, Enamel & Gold Encrusted. If Crown Tuscan is your passion, then there's a #1305 vase gold encrusted Rose Point, a #6004 - 6" vase w/Ebony foot, a #3900/575 - 10" Cornucopia Vase, Gold Encrusted Rose Point, and a 3500/42 - 12" Covered Urn, Gold Encrusted Portia.

Everyone should have at least one lamp in their collection adorning an end table, and there are some beauties this year. An Ebony Lamp Gold Encrusted Peacocks, a Brown Owl Lamp, a #2351 - Crystal Near Cut 21" Lamp and a #520 - Amber Buddha Lamp, among others. Some very nice transparents may catch your eye, such as a #3400/113 - Royal Blue 35 oz. Decanter w/Silver Bands, a pair of #1402/76 - Carmen 5" Candlesticks, a #3035 - Heatherbloom Tall Sherbet, etched #731, a Peach-Blo Frosted Melon Boy Figure Flower Holder, a #3400/95 - Forest Green Puff Box, Etched Apple Blossom, a #3400/134 - Amethyst 13" Vase, a #279 - Amber 13" Vase, Gold Encrusted Portia and a #826 - Light Emerald Sani-Shaving Service. For some smalls, how about a crystal #2 & #3 bird, a #1066 - Mocha 1 oz. Pousse Café, a pair of #3700 - Crystal 1 oz. Cordials, Cut Montrose, a #3122 - Heatherbloom 1 oz. Cordial, and a #7966 - Crystal 1 oz. Cordial, Moss Rose Décor (Talisman Rose w/o Gold). And finally we can't help but mention the wonderful 36" worker's door chain containing crown Tuscan, Carmen, Ebony, Forest Green, Royal Blue, Amethyst and Gold Krystol. At 36" wide, it would look incredible adorning anyone's doorway.

Please mark your calendars and plan on attending. Come out and support one of our most important fund raising functions. Check out the complete schedule of times on page 12. For those of you too far away to attend in person, please consider an absentee bid. You can bid with confidence that we have described each piece as accurately as possible. So don't let that special piece get away. It's easy. For complete information on the auction, including absentee bidding, please visit our web page at [www.cambridgeglass.org](http://www.cambridgeglass.org) and click on the auction tab. While you're there, you can again check out pictures of each individual lot, so you can really inspect up close and personal. If you have any questions, please don't hesitate to contact us at [jack1746@roadrunner.com](mailto:jack1746@roadrunner.com). Thanks again to all of our consignors for this wonderful selection of glass!



# National Cambridge Collectors, Inc.

PO Box 416 Cambridge, OH 43725-0416

## Board of Directors

Cindy Arent	Ken Filippini	Nancy Finley
Les Hansen	Rick Jones	Helen Klemko
Freeman Moore	Mark Nye	David Ray
Mike Strebler	Lynn Welker	Frank Wollenhaupt

## Officers

President	David Ray
Vice-President	Ken Filippini
Secretary	Freeman Moore
Treasurer	Mike Strebler
Sergeant-at-Arms	Mark Nye

Director of Strategic Planning	Rick Jones
Director of Human Resources	David Ray
Chair, Standards Committee	Sharon Miller
	Larry Everett - Committee Member
	Susan Everett - Committee Member
	David Ray - Committee Member
	Mike Strebler - Committee Member

## Member Services

<b>Vice President</b>	Frank Wollenhaupt
Member Relations	(vacant) Director of Member Relations
	Tarzan Deel - Membership Data-base Administrator
Crystal Ball Convention	Helen Klemko - Executive Editor
	Julie Buffenbarger & Nancy Finley - Convention Directors
Digital Media	Alex Citron - Manager of Facebook Operations
Member Meetings	(vacant)
Study Groups	Jeannie Moore - Study Group Coordinator

## Development

<b>Vice President</b>	Larry Everett
Campaigns	Ken & Jane Filippini - Annual Fund Directors
	Larry Everett - Director of the Heritage Society
Events	Jack & Elaine Thompson - Auction Managers
	<a href="mailto:jack1746@roadrunner.com">jack1746@roadrunner.com</a>
	Lynn Welker - Auction Manager
	Joy McFadden - Show Manager
	Mary Beth Hackett - Show Manager
	Larry & Susan Everett - Glass Dash Managers
Projects	Carl Beynon - Jeweler & Scotties Project Manager
Publicity	Frank Wollenhaupt

## Education

<b>Vice President</b>	Les Hansen
Publications	Mark Nye - Director of Publications
Research	Mark Nye - Archivist
Programming	Greg Vass - Director of Programming
NCC History	Mark Nye - Archivist

## Museum

<b>Vice President</b>	Cindy Arent
Public Operations	Sandy Rohrbough - Docent
	Betty Sivard - Docent
	Sally Slattery - Docent
Facilities & Grounds	Carl Beynon - Director of Facilities
Collections	Lynn Welker - Director of Collections
Merchandise Sales	Lynn Welker - Gift Shop Manager
	Cindy Arent - Gift Shop Manager
Community Relations	Cindy Arent

## Administration

<b>Vice President</b>	Mike Strebler
Accounting & Finance	Lisa Neilson - Office Manager
Risk Management	(vacant)
Payroll	(vacant)
Information Technology	David Adams - Webmaster
Legal	(vacant)

## ADDRESS CHANGES

Please send address changes to:  
 Membership - NCC  
 PO Box 416  
 Cambridge, OH 43725  
 or by e-mail to:  
[tarzandeel@verizon.net](mailto:tarzandeel@verizon.net)

## WEBSITES

- **NCC WEBSITE**  
[www.CambridgeGlass.org](http://www.CambridgeGlass.org)
- **MIAMI VALLEY STUDY GROUP WEBSITE**  
[www.mvsg.org](http://www.mvsg.org)

## CONTACTS

NCC Museum (phone)..... (740) 432-4245  
[nccglass@yahoo.com](mailto:nccglass@yahoo.com)  
 David Ray, President.....  
 e-mail: [westervillesh@hotmail.com](mailto:westervillesh@hotmail.com)  
 Freeman Moore, Secretary.....  
 e-mail: [freemanmoore@verizon.net](mailto:freemanmoore@verizon.net)  
 Helen Klemko, Crystal Ball Editor.....  
 e-mail: [ncccrystalball@charter.net](mailto:ncccrystalball@charter.net)

## The National Museum of Cambridge Glass



**Closed for the season  
 - see you in April**



# PRESIDENT'S MESSAGE

## Maintaining the Momentum

New Year's day, 2012, started out like most Sunday mornings. After breakfast, I began my daily routine which includes reading email messages and shopping on a variety of glass-related websites. My email box contained a message from NCC treasurer, Mike Strebler, titled "Good News". Mike's message outlined some of the financial accomplishments of NCC during 2011. I would like to share a few of these accomplishments with you.

The National Museum of Cambridge Glass collected over \$10,000 in admission receipts for 2011. The general price of admission was increased to \$4 in 2011, but seniors, bus tours, and special groups are given reduced rates. Compared to \$3,750 in 2006, the admission receipts collected from visitors through our museum has increased tremendously over the last five years. This marks a major accomplishment by Museum Director, Cindy Arent, our museum docents, Betty Sivard, Sandy Rohrbough, and Sally Slattery, and many museum volunteers. NCC's relationship with the Guernsey County Visitor and Tourism Bureau has greatly increased our museum's visibility at the local and national level. Congratulations to Cindy and her team!

The number of visitors to the museum has increased each of the last five years. As a result, sales in the gift shop have increased as well. In March, the Board of Directors voted to purchase a credit card machine for use in the museum. For the year, credit card sales exceeded \$11,000. Most of this revenue results from sales in the gift shop. Throughout the year, NCC's official jeweler, Carl Beynon, created many unique and beautiful items to sell in the gift shop. This year, his efforts netted more than \$5,000. Since its inception three years ago, the jewelry project has raised more than \$25,000. The vast majority of the items sold in the gift shop are donated by NCC members. With these generous donations, NCC is able to raise significant revenue to help maintain the museum as well as grow the Endowment Fund. Gift shop sales have increased over the past few years and, as a result, the need for donations has increased as well. Please consider donating items to the museum in 2012. Colored glass items possessing the triangle C are the best sellers.

For the first time in several years, NCC's membership increased in 2011. Over 93% of the Friends of Cambridge from 2010 renewed in 2011 and we netted 9 additional households.

The year of 2011 was obviously very successful for NCC. This success is not the result of single individuals, but the collaborative effort of nearly 750 like-minded people, who are passionate about Cambridge glass. The first Annual Fund mailing for 2012 will occur in March. The Annual Fund is a once-per-year opportunity for the Friends of Cambridge to rally together in support of NCC. The 2011 Annual Fund grossed more than \$51,000. In order to maintain our momentum into 2012, we must equal or increase our level of support of the Annual Fund. I am looking forward to your continued support of NCC in 2012 through a generous gift to the Annual Fund.

February will be a busy month for me. During the second weekend, I will represent NCC at the South Florida Depression Glass Show and Sale sponsored by the South Florida Depression Glass Club. NCC members Fleur de Lys Healy and Linda Gilbert graciously invited me to attend their show near Fort Lauderdale. The fourth weekend of February, I will be travelling to Kent, Washington to attend the Green River Depression Glass Show and Sale. NCC member Kay Larsson organizes all the publicity for this show. I am looking forward to meeting Swede and Kay Larsson, as well as other NCC members living in the Northwest portion of the country.

Finally, take time to check out the many color photographs of Cambridge glass items being offered for sale at this year's Benefit Auction in March. Jack and Elaine Thompson, Dave Rankin, Frank Wollenhaupt, Larry Everett, and Helen Klemko have worked many hours preparing for the auction. Individual photographs of each item can be viewed at NCC's website. Please mark your calendars for March 2 and 3 to attend the March Quarterly Meeting and Annual Benefit Auction at the Pritchard Laughlin Civic Center in Cambridge, OH.

David Ray  
[westervillesh@hotmail.com](mailto:westervillesh@hotmail.com)

*A Preview of some of the spectacular glass offered in this year's NCC Benefit Auction - March 3, 2012  
Be sure to check out the NCC website [www.cambridgeglass.org](http://www.cambridgeglass.org) for additional photos*



*Auction Preview.....continued*



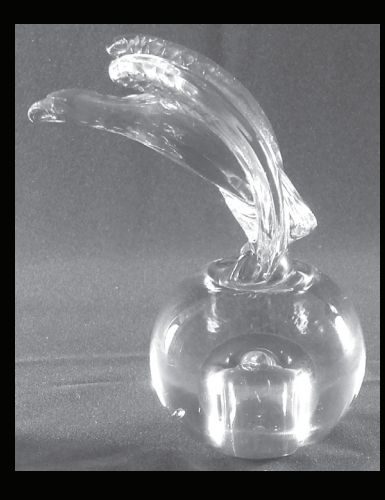
*Auction Preview.....continued*



*Auction Preview.....continued*



*Auction Preview...many more photos of individual lots  
are shown on the website at [www.cambridgeglass.org](http://www.cambridgeglass.org)*





## **NOW AVAILABLE - Rose Point DVD**

Last November, a large gathering of Friends of Cambridge were treated to a wonderful November Program showcasing one of the most collected patterns of glassware ever created – Rose Point.

Thanks to the efforts of a dedicated group of resourceful NCC members, this program can now be enjoyed by many, many more Friends as often as they wish. The Rose Point program was recorded on film as it unfolded, and a DVD has been compiled and skillfully polished into a professional product that does an excellent job of capturing the elegance of its topic. This is a significant and exciting landmark in the documenting of educational materials for NCC.

In many ways, this DVD is nearly better than experiencing the Program firsthand. Although you don't have the delight of fellowship with a large assembly of fellow collectors, you do get to see some of their wonderful unique items they brought along to share with others.

The DVD has several attractions, including the main portion where Lynn Welker provides a wide-ranging discussion of the creation and history of the various lines and unique items this etching appeared on. A slideshow segment displays photographs set to music with identification titles for most of the items available from the Program. The stemware photographs show each stem in scale while remaining items show in a consistent size window. This portion is an excellent resource for beginning collectors in search of identifying a correct stem or product line as well as a refresher for

everyone. The next portion showcases an interview with Effie Tom, who worked in the Etching Department of Cambridge Glass from 1945 until 1950. She is shown speaking about her duties as a paint girl and then as a print girl in several of the decorating shops. Finally, Lynn describes and identifies a variety of items that were brought to the always interesting Show and Tell portion of each Quarterly Meeting.

The cost of the DVD is \$19.95, plus \$3 shipping. NCC members are entitled to a 10% membership discount (\$17.95 + shipping). Please refer to page 20 for ordering information. Once the Museum reopens in April, copies will also be available in the museum Gift Shop.

Coming to the always variety-filled annual Cambridge Glass Auction in March to add some special items to your Rose Point collection? Bid with wild and uncontrolled abandon - then pick up your copy of the DVD.

This informative and enjoyable Rose Point program and information is an excellent gift for a fellow collector for birthdays, anniversaries and other events – just like that special piece of Rose Point always is!

A limited number of these DVD's will be produced initially, so be sure to reserve your copy today.

# ONLY QUESTIONS - NO ANSWERS

By Frank Wollenhaupt ([fewvic303@sbcglobal.net](mailto:fewvic303@sbcglobal.net))

I feel like Gary Moore on an episode of "To Tell The Truth"....."Will the real Cambridge flower frog please stand up". I think most of you are old enough to remember that show. They had three people all claiming to be the same person. The panel of guest stars would try and guess which one was the real person by asking a series of questions.

The reason I feel like this is because I have had several people asking about a flower frog that just sold on Ebay at the end of October.

Some people call it a Parrot, Cockatoo or bird on a stump. We even show it in the most recent colors book.

By asking a few questions, I feel that it is Cambridge but after asking Lynn Welker, checking the mold record books and going through all the Cambridge information I have available, I will have to say that I can't prove that it is. I even asked Mark Nye if he has seen anything about the flower frog in his research. Mark said that he couldn't verify it as Cambridge.

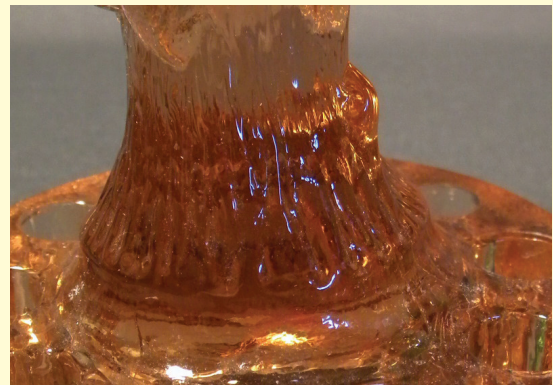
If we compare the "Bird on a Stump" with the Eagle (#514 page 3, 1927/29 catalog) we can see how much alike they are.



The base on both, measures 1 ¼ inch high X 3 5/8 inch across, with 10 holes around the outside.



Both the Bird and the Eagle are sitting on a tree branch/stump with the same basic molding around the stump and a small knob sticking out near the base.

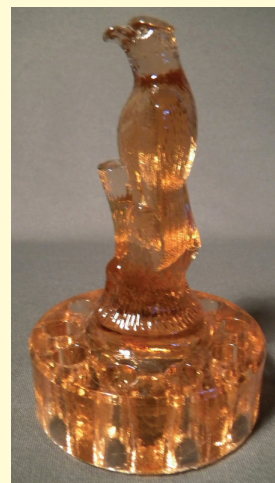


# ONLY QUESTIONS - NO ANSWERS (continued)



The bird has been seen in three basic colors from the late 20's time period. (Crystal, Pink and Light Emerald Green)

I'm guessing now but I believe that the Eagle started out as the Bird on a Stump and because of the difficulty in getting it out of the mold, they changed it into the Eagle. The Bird on the Stump has a top knot and a beak that would probably chip or get stuck in the mold easily. That would explain why they both have the same basic shape. The base is not like any other Cambridge flower frog.



If anyone has seen the Bird on a Stump in any colors not listed or if anyone has additional information on this flower frog, please email me so we can let everyone know.

\*\*\*\*\*

I thought I had gotten lucky on Ebay recently. I thought I had found a 2800 (Community) candle stick in a dark blue color, possibly blue 2. But something just didn't look right. The top of the candlestick was kind of rounded, not flat and polished smooth like the Cambridge ones.

In the description the seller said "VTG Italy Savoiv Vivre Cobalt Blue Glass Candle Holder – Gorgeous vintage cobalt blue glass candle holder made by Savoiv Vivre in Italy. Dark cobalt blue glass candle holder with a generously lipped candle holder sitting atop a six sided tapered column. Large six sided sturdy base."



## ONLY QUESTIONS - NO ANSWERS

(continued)

I first went to my Near Cut catalog and found a Community 2800/235 - 7 ½ inch candlestick. I was surprised how close this Italian stick looked like the Community one. Other than the top and being a little taller, it would be a dead ringer.



So if you are out and about, be aware that the Community candlestick you just found in Blue or some other color might not be Cambridge.

I am still waiting to hear from our two new writers for the Crystal Ball.....you know who you are.....send me some information about your collections and what you collect, I will help you put together a story.....We need your input.

Till next time.....keep hunting, you never know what you will find.

## National Cambridge Collectors Inc. Glass Show & Sale June 22 & 23, 2012

**Location:**  
Pritchard Laughlin Civic Center  
Interstate 70, Exit 176, 1/8 Mile East  
on Route 40, Cambridge, Ohio

**Hours:**  
Friday, June 22-1:00 p.m. to 5:00 p.m.  
Saturday, June 23-11:00 a.m. to 4:00 p.m.

**Admission:**  
\$5 - Good for both days  
(Present this showcard at the door and  
receive a discount of \$1)

**Featuring:**  
Cambridge and other fine glassware  
including Heisey, Imperial, Fenton, Duncan,  
Tiffin and Westmoreland

**Educational Programs**  
Bring & Brag (Show & Tell)

**Attractions:**  
National Museum of Cambridge Glass  
136 S. 9th Street  
Cambridge, Ohio  
(740)432-4245



**GLASS DASH:**  
Saturday, June 23  
(St. Benedict's Activity Center)  
7:00 a.m. Early Bird Admission \$10  
8:30 a.m. General Admission \$4

**More Info:**  
[www.cambridgeglass.org](http://www.cambridgeglass.org)  
Cambridge Crystal Ball



## SCHEDULE OF EVENTS FOR AUCTION WEEKEND MARCH 2 - 3, 2012

### Friday, March 2, 2012, Pritchard-Laughlin Center

6:30 - Open to view 2012 Auction glass  
7:30 - 8:00 - March Quarterly Meeting  
8:00 - 9:00 - 2012 Auction Preview by Lynn Welker,  
plus Show 'n Tell

### Saturday, March 3, 2012, Pritchard-Laughlin Center

9:00 - Open to view 2012 Auction glass  
10:00 - 2012 NCC Benefit Auction

***National Cambridge Collectors Inc. Cordially invite you to the premiere  
Glass Show and Sale***

***“A Hunting We Will Go!”\*\****

**June 20-24<sup>th</sup>, 2012**

**Pritchard Laughlin Civic Center  
Interstate 70, Exit 176, 1/8 Mile East on  
Route 40, Cambridge, Ohio**



**Dear Glass Hunters,** on behalf of the National Cambridge Collectors we are pleased to announce the latest incarnation of our convention with glass show and sale. This year we are kicking off the festivities with a delicious fried chicken picnic at the Prichard Center. They have just finished a large patio out back and we will have plenty of space for the great programs that Les and Greg have set up for us. This year's theme “A Hunting We Will Go!” features the Tally-Ho and Hunt Scene Etching Series creating a platform to provide a rare glimpse into this fascinating and underrepresented pattern. Our newly appointed Vice President of Education Les Hanson and Director of Programming Greg Vass, will lead this focus allowing in depth conversations about this etching and pattern never before featured in the Crystal Ball.

We would like to take this opportunity to thank the generous donations we have already secured, however our silent auction is still seeking volunteers for donating gift baskets. Your donation directly benefits our beautiful museum, please contact Nancy Finley ([jefinley@charter.net](mailto:jefinley@charter.net) 660-826-5032) for info and ideas to donate your gift basket TODAY!

**Thursday June 21<sup>st</sup>**

Coffee with Cambridge and  
Convention registration at the NCC Museum 9am

**Thursday June 21<sup>st</sup> 7pm**

**HEY FOLKS!! COME EAT SOME FRIED CHICKEN!!!**

Picnic at the Prichard!

Great place to renew friendships and attend some exciting programs

**Friday June 22<sup>nd</sup>**

8am registration at the Civic Center

**SHOW AND SALE**

Bring and Brag

**Saturday June 23<sup>rd</sup>**

Glass Dash

**SHOW AND SALE**

Silent Auction



**\*\*Featuring the Tally-Ho and Hunt Scene Etching Series. This year will provide a rare glimpse into this fascinating and underrepresented pattern.**

# MAIL BID - PRIVATE AUCTION

*Rare Cambridge #779 14 inch vase with Japonica decoration in Amethyst*



The Cambridge Glass Company made hundreds of thousands of pieces of glass in its 50-plus year history. Certain colors, patterns, shapes, and decorations are considered hard to find or scarce, but only a few truly merit that most overused of adjectives, “rare.” Collectors of any stripe routinely banter or argue about whether a given item should be classified as rare. However, most collectors of Cambridge glass would probably agree that, of all the types of glass that the company ever made, nothing is rarer or more desirable than pieces with the Japonica decoration.

According to two articles written by advanced collectors of Cambridge glass (one in the *Rainbow Review Glass Journal* in 1978, and one in the July 1983 issue of our very own *Cambridge Crystal Ball*), Cambridge’s Japonica is an applied decoration of budding and flowering branches rendered in a fired-on white enamel, on documented Cambridge Glass Company shapes. Japonica has been found on at least 15 different Cambridge shapes, including vases, bowls, candleholders, covered urns and candy jars. Others are possible.

In terms of color, the Japonica decoration is documented on Carmen (ruby), Royal (cobalt) Blue, Forest Green, and Amethyst. It may also have been applied to pieces in one of Cambridge’s 1930s-era amber shades, but this is not depicted in any of the Cambridge glass books in my reference library. When pieces of Japonica do turn up, they are most often seen in Carmen or Royal Blue. Examples on Forest Green and Amethyst are much scarcer – the rarer colors of an already rare decoration.

Based on the shapes in which it is seen, Japonica appears to have been made in the mid 1930s. Judging by the small number of pieces found today, the decoration was probably too labor-intensive for the company to create and still generate a profit.

This #779 vase is the largest piece of Cambridge glass known to have been decorated with Japonica. The same vase, with an oval shaped mouth, in Carmen, is considered one of the treasures of the National Cambridge Collectors' museum. I have been advised that another #779 vase, also in Carmen, is in a private collection. There may be others, but I am not aware of them.

The most striking feature of this vase is just how much decoration is on it. Many smaller Japonica pieces have just a sprig or two of decoration, but this #779 vase has a level of decoration to it that I can only classify as insane. (I mean that in a good way.)

The vase measures just shy of 14 inches tall, 5-5/8 inches across the round mouth, and 5 inches across the base. At its widest point, the vase measures 8 inches across. It has the company's special mark in white enamel: the word JAPONICA plus two dots in a circle, curving around the company's C in a triangle logo, on the underside. It is in excellent condition.

If you would like to place a bid on this magnificent piece, please contact me by mail, telephone, or email, and provide me with your name, address, telephone number, and email address. I will send you a detailed description with multiple photographs, a detailed condition report, a bid form with instructions and the legalese by mail and/or email, and state the opening bid, as well as the deadline for receipt of bids. All bids must be in writing, on the form that I will provide to you.

This is truly a once in a lifetime opportunity to add a museum quality piece of Cambridge glass to your collection. You would be rightfully proud to own and display it, and would be the envy of your fellow Cambridge glass collectors.

Upon successful sale, it will be triple-boxed and shipped to the buyer via UPS, free of all shipping and insurance charges. Note that I am also willing to deliver it anywhere within a one-day drive from the city of Los Angeles, or the winner is welcome to pick it up in person here in Los Angeles.

Thank you for considering this stunning piece. Good luck bidding!

MICHAEL KRUMME  
(NCC member since 1984)  
P.O. Box 35014  
Los Angeles, CA 90035-0014  
(323) 937-1470  
mkrumme@pacbell.net

Coming soon: Log onto [www.youtube.com](http://www.youtube.com) and enter the search terms "Cambridge Japonica vase" to see a video of me showing and talking about this incredible piece.

# Knowing Your Bridge Hounds by Darren Swarts

Every Cambridge glass collector is familiar with the pencil dog. Having been reproduced extensively by Guernsey Glass, however, it can be difficult to distinguish an original from a reproduction even for an experienced collector. This article will detail various ways to accomplish this task.

Physical differences between originals and reproductions are easy to spot even for a novice. The mold used to make the reproductions is rumored to be a retooled Cambridge one, but this idea is disputed by some collectors. They believe the reproduction mold to be inspired by the Cambridge one, rather than created from it. One must first check for a “B” mark between the legs in the back.



Cambridge pencil dog

If present, then the dog is positively a reproduction. Some reproductions, however, lack this definitive mark so other more subtle techniques must be employed. Next, one can check the dog’s eyes. They are straight and horizontal on an original, but larger and slanted on a reproduction.



Reproduction pencil dog

The eyes, however, are not always present on originals or reproductions so other techniques may need to be used. One can check the crease between the front legs and feet and the inside of the front leg. Several small bumps of excess glass on the crease strongly indicate a reproduction; roughness on the inside of the front leg also strongly indicates a reproduction.

Any hole less dog is almost certainly a reproduction—the only possible exception being crystal. On an antidotal note, a stunted upright ear that leans backwards and lacks a mold line is typically seen on reproductions. However, the lack of a mold line does not disqualify a pencil dog from being an original, but rather later production. Understanding colors is also important in this endeavor.

The Cambridge pencil dog was made in the following colors: peach-blo, three distinct variations of crown tuscan, carmen, mocha, light amber, dark amber, gold krystol, mandarin gold, pistachio, light emerald, dark

emerald, forest green, moonlight blue, tahoe blue, royal blue, mulberry, light amethyst, amethyst, smoke, ebony, milk, and crystal.

The reproduction pencil dog was also made in a variety of colors, which I will attempt to describe here. The pinks include



Cambridge pencil dog with eyes outlined

light peach-blo and three distinct variations of crown tuscan. The reds vary from carmen to blood red, including subtle variations between the two. The ambers vary from light amber to dark amber to extremely dark amber, including variations between the former two. The yellows include sunshine yellow and vaseline. The greens include medium apple green and olive. The blues vary from moonlight blue to light tahoe blue to colonial blue to royal blue, including subtle variations between the latter two, a dark muted blue, and green-tinted windsor blue.

The purples include heatherbloom and dark muted purple. The blacks include light smoke and ebony. Miscellaneous colors include milk and crystal. Special treatments include satin dark amber, satin sunshine yellow, satin medium apple green, satin milk, satin crystal, satin amber/milk slag, carnival light green, blue/green slag, and amber/milk slag. There are



Reproduction pencil dog with eyes outlined

likely other colors, especially slag colors, that the author is currently unaware of.



Several unusual reproduction colors



## Knowing Your Bridge Hounds - continued

Color differences between originals and reproductions may be used by more experienced collectors to differentiate the two. Original peach-blo is a stronger color than the reproduction light peach-blo. Original dark crown tuscan, or salmon, does not tend toward red as does the reproduction. Cambridge gold krystal and mandarin gold are both much brighter colors than the reproduction sunshine yellow. Cambridge pistachio and light emerald are much paler colors than the reproduction medium apple green. Neither Cambridge dark emerald nor forest green tend toward yellow to the extent reproduction olive does. Cambridge tahoe blue is darker and pools thicker than the reproduction light tahoe blue. Cambridge amethyst is much richer and pools thicker than the reproduction dark muted purple. Cambridge smoke pools thicker and does not tend toward yellow like the reproduction light smoke. However, medium crown tuscan, carmen, light amber, dark amber, moonlight blue, royal blue, ebony, milk, and crystal are extremely difficult to tell apart.

Hopefully the reader finds the information and techniques contained in this article useful in their glass hunting. While every attempt has been made to ensure this article is complete as possible, as every glass collector knows, there is always something new to find. As such, any additional information is appreciated.



Cambridge gold krystal and mandarin gold (left)  
reproduction sunshine yellow (right)



Cambridge dark emerald and forest green (left)  
reproduction olive (right)



Cambridge light emerald (left)  
reproduction medium apple green (right)



Cambridge peach-blo (left)  
reproduction light peach-blo (right)



Cambridge "salmon" crown tuscan (left)  
reproduction dark crown tuscan (right)



Cambridge tahoe blue (left)  
reproduction light tahoe blue (right)

## *Decorating the home with Cambridge Glass* by Nancy & Jim Finley

My husband and I began collecting Rose Point 25 years ago. We soon found that the etching was produced by none other than Cambridge Glass Co. in Cambridge, Ohio. We attended our first convention in 1987 and saw all the wonderful glass that the company made. We were amazed with the variety. Soon we were collecting colors, decorated opaques, swans, nude stems, bar items, smoking items, nearcut, and whatever else struck our fancy.



One day I was decorating the house for Christmas, and I spied the Carmen 8 1/2 inch swan that we had just bought. I thought, that would be nice to put candy in and have it setting out. It looked so nice I searched the shelves for green and red Cambridge Glass. I set out all we had at the time. There were not very many and I said to Jim, "I think we should buy more of these colors for next year." Now, 20 some years later, we have glass in enough colors that I decorate for all the seasons. These pictures are of the display for Christmas 2011.



As the seasons progress I would like to share with you, gentle reader, how we decorate our home with Cambridge Glass!





by Larry Everett

This report is provided to keep members up with what's happening on the world's largest Internet Auction site. It is not meant as an educational tool, nor as a pricing guide, and we cannot guarantee the accuracy of listings herein.

Greetings from eBay land! Please forward interesting news to me at: [heartlamps@sbcglobal.net](mailto:heartlamps@sbcglobal.net).

**Rose Point:**

A beautiful 3105 (pressed Rose Pont) - 1 oz. Cordial with a Royal Blue Bowl put a smile on someone's face for \$61. A seldom seen 3500/41 - 10" Urn or Candy Jar was hammered down for \$611.26. Two determined bidders were interested in a Pristine 747 - 4 1/2" x 3 1/2" Cigarette Box and Cover. It was in mint condition and also sported a paper Cambridge label, the price was \$293.88.

**Statuesque:**

A stunning 3011/2 - 11 oz. Table Goblet (Smoke Cracked & Crystal) drew a lot of interest from bidders and finally ended at \$975. A lovely single 3011/63 - 9" Candlestick (Amber & Crystal) sold for \$260.51. A hard to find 3011 - 7" Flared Crystal Comport with Rock Crystal Engraving 611 ended at \$304.56. Please check out the Miami Valley Study Group website. The images for the Rock Crystal Engravings have been updated and they are much clearer than before. Here's the link: <http://albums.mvsg.org/index.php>

**Other Etchings:**

A rare Lt. Emerald - No. 402 - 12" Vase, E Gloria went to a happy home at a mere \$170. An even happier home welcomed a lovely 3400/14 - 7" Tall Ebony Comport, D/970-S Silver Encrusted Apple Blossom for only \$168.50. A rare Pink No. 730 - 1/2 lb. Candy Jar, E732 sold for \$124.95.

**Miscellaneous:**

For you Caprice collectors: a single Crystal No. 176, 3-lite Candelabrum with Arm and 2 Vases sold for only \$61. A rare single Moonlight Blue 1268 - 6 1/2" 2-lite Candelabrum with #19 Moonlight Blue Bobeches and #1 2 1/2" Moonlight Blue Prisms, ended at \$128.19. Rare and very desirable describe a Crown Tuscan Seashell 14 - 9" Comport with Rockwell Sterling Seahorse decoration and trim sold for \$499.99. A Crown Tuscan 119 basket ended at \$169. A very rare Experimental Blue Seashell 18 - 10" 3-toed Bowl soared to \$669.99. An absolutely stunning Royal Blue 3400/38 - 80 oz. Ball Shaped Jug with heavy Sterling Floral decoration and trim sold for \$805.95. A rare Crown Tuscan 3400/38 - 80 oz. Ball Shaped Jug with Black Enamel line decoration caused a lot of excitement, finally ending at \$1,414. A Jade (frosted Lt Emerald) No. 513 - 13" Draped Lady flower center sold for \$231.31. And finally, a Frosted Royal Blue Everglade 1319 - 4 1/2" Vase was hammered down for \$110.50.

Happy hunting!



Experimental Blue Seashell 18 - 10" 3-toed Bowl



Lt. Emerald - No. 402 - 12" Vase, E Gloria



Crown Tuscan Seashell 14 - 9" Comport with Rockwell Sterling Seahorse



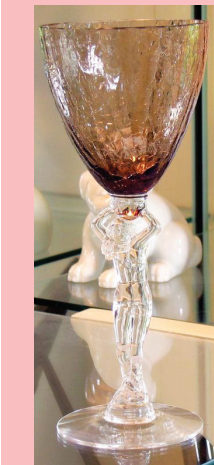
Frosted Royal Blue Everglade 1319 - 4 1/2" Vase



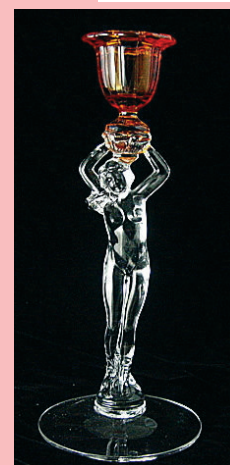
Royal Blue 3400/38 - 80 oz. Ball Shaped Jug with heavy Sterling Floral decoration



Rose Point Pristine 747 - 4 1/2" x 3 1/2" Cigarette Box and Cover



3011/2 - 11 oz. Table Goblet (Smoke Cracked & Crystal)



3011/63 - 9" Candlestick (Amber & Crystal)



3105 (pressed Rose Pont) - 1 oz. Cordial with a Royal Blue Bowl



South Florida Depression Glass Club  
 American Glass, Pottery, Dinnerware  
 Show and Sale

February 11&12, 2012  
 Sat. 10am-5pm & Sun. 10am-4pm



Emma Lou Olson Civic Center  
 1801 NE 6th St • Pompano Beach, FL

Admission: \$6.50  
 (50¢ off with this ad)  
 Info: www.SFDGC.com

Directions: corner of NE 6th St.  
 and NE 18 Ave., off Rt. 1,  
 just north of Atlantic Blvd.



Designs of the Past That Dazzle Today!

**How to Order the DVD by Mail  
 or from the NCC Website**

Send orders to:  
 NCC • PO Box 416 • Cambridge, OH 43725

OHIO RESIDENTS PLEASE ADD 7% SALES TAX

Please include your name, complete mailing address  
 and your phone number or e-mail address.

Payments by check or Money Order only, payable to NCC.

The DVD may also be purchased on the NCC website,  
[www.cambridgeglass.org](http://www.cambridgeglass.org). Major Credit Cards are  
 only accepted for web purchases.

**NCC welcomes the  
 following new members**

Jeff & Debbie Leonard Ohio

**Scotty Dog Bookends**

**Crystal Opalescent**



**Cobalt**



**\$100/pair plus \$12  
 shipping & handling;  
 sales tax if applicable.**

**Frosted Cobalt**



**\$110/pair plus \$12  
 shipping & handling;  
 sales tax if applicable.**

Send orders to:  
 NCC • PO Box 416 • Cambridge, OH 43725  
 OHIO RESIDENTS PLEASE ADD 7% SALES TAX  
 Please include your name, complete mailing address  
 and your phone number or e-mail address.  
 Payments by check or Money Order only, payable to NCC.



Arkansas Glasshoppers, Inc.  
PRESENTS THE TWENTY-SIXTH ANNUAL  
**Depression Era Glass  
SHOW and SALE!**

Depression era patterns & colors, plus  
Cambridge, Fostoria, Heisey, Imperial, Tiffin,  
pottery & kitchen items of the era.

**Hall of Industry - State Fairgrounds**

Roosevelt & Howard Streets, Little Rock, AR

Admission includes FREE PARKING!

Saturday, February 25, 2012 9am - 5pm

Sunday, February 26, 2012 11am - 4pm

ADMISSION \$5 - GOOD BOTH DAYS

GLASS IDENTIFICATION  
DOOR PRIZES & DISPLAYS

SHOW INFORMATION: (501) 868-4969

Email:

[bgmarglass@sbcglobal.net](mailto:bgmarglass@sbcglobal.net)

or

[rpnsea@aol.com](mailto:rpnsea@aol.com)

# NCC Events

2012 NCC Auction  
Saturday, March 3, 2012

\*\*\*\*\*

2012 Convention  
June 20-24, 2012

**2012** *Glass Sale & Show* **40<sup>th</sup> Year**

Sponsored by The 20-30-40 Glass Society of Illinois  
Visit our website at: [www.20-30-40society.org](http://www.20-30-40society.org)

Specializing in: *Depression, Elegant, Carnival, Pattern, Art Glass, Victorian, & Contemporary Glassware*

**Saturday, March 10<sup>th</sup>, 2012 - 10am to 5pm**  
**Sunday, March 11<sup>th</sup>, 2012 - 11am to 4pm**

Door Prizes ♦ Crystal Repair ♦ Glass Identification ♦ Reference Library

Admission: \$8.00 per Person / \$7.00 with this card

Location: **THE CONCORD PLAZA MIDWEST CONFERENCE CENTER**  
401 West Lake Street, Northlake, IL 60164  
Free parking and shuttle bus to front door  
For information, call 630-851-4504

*If you know about any upcoming glass shows or other glass events, please pass the word on to us at least six to eight weeks before the show dates. These listings are free of charge.*

## DEALER DIRECTORY

**Joanne & Janine Bender**  
Specializing in Depression Era Glassware  
We Buy & Sell

PO Box 1007  
Pebble Beach, CA 93953

831-647-9957      [jjdbender@aol.com](mailto:jjdbender@aol.com)  
831-647-9949      [www.benderglass.com](http://www.benderglass.com)

**J & L Treasures**  
Specializing in Depression Glass  
Heisey, Cambridge, Fostoria, Morgantown,  
Tiffin, etc.

Linda Kilburn  
PO Box 1257  
Burlington, CT 06013

860-673-4088 (Answering machine - leave message)

**Ohio Valley Antique Mall**  
7285 Dixie Highway (Route 4)  
Fairfield, OH 45014  
Cincinnati's Largest Multi-Dealer Antique Mall  
Hours: DAILY 9:00 a.m. - 9:00 p.m.

513-874-7855  
[www.ohiovalleyantiquemall.com](http://www.ohiovalleyantiquemall.com)  
[cfaxon@ohiovalleyantiques.com](mailto:cfaxon@ohiovalleyantiques.com)

## Glass Shows

**February 11-12, 2012**

San Antonio Looking Glass Show  
San Antonio, TX  
Call: 972-672-6213  
More Info: [meyerlookingglass@hotmail.com](mailto:meyerlookingglass@hotmail.com)  
[www.meyershows.com](http://www.meyershows.com)

**February 17-19, 2012**

Houston DG Show  
Rosenberg, TX  
Call: 713-410-4780  
More Info: [mmxglass@aol.com](mailto:mmxglass@aol.com)

**February 18-19, 2012**

37th Pittsburgh Antiques Show & Sale  
Pittsburgh, PA  
Call: 412-734-5279  
More Info: [www.hgcp.org](http://www.hgcp.org)

**February 25-26, 2012**

Arkansas Glasshoppers DG Show & Sale  
Little Rock, AR  
Call: (501)868-4969  
More Info: [bgmarglass@sbcglobal.net](mailto:bgmarglass@sbcglobal.net) or [rpnsc@aol.com](mailto:rpnsc@aol.com)

**February 25, 2012**

Green River Glass Show & Sale  
Kent, Washington  
Call: 253-852-5250  
More Info: [kayswede@msn.com](mailto:kayswede@msn.com)

**March 10-11, 2012**

Metroplex Glass Show & Sale  
Grapevine, TX  
Call: 972-672-6213  
More Info: [meyerlookingglass@hotmail.com](mailto:meyerlookingglass@hotmail.com)  
[www.meyershows.com](http://www.meyershows.com)

**March 10-11, 2012**

20-30-40's Society DG Show & Sale  
Northlake, Ill  
Call: 630-851-4504  
More Info: [20-30-40society.org](http://20-30-40society.org)

**March 16-17, 2012**

Heart of America DG & Pottery Show  
Independence, MO  
Call: 816-308-7495  
Email: [hoagc@juno.com](mailto:hoagc@juno.com)  
More Info: [www.hoagc.org](http://www.hoagc.org)

**March 31-April 1, 2012**

Lincoln Land DG & Pottery Show and Sale  
Springfield, Illinois  
Call: 217-546-4790  
Email: [margaret\\_davis37@sbcglobal.net](mailto:margaret_davis37@sbcglobal.net)  
More Info: [www.LincolnLandGlassClub.com](http://www.LincolnLandGlassClub.com)

# DEALER DIRECTORY

**Dealer Directory - \$24 for 12-months, size limited by box (see below). Includes listing on NCC website.**

## Advertising Rates:

1/8 page \$15      1/4 page \$20  
1/2 page \$30      Full page \$50  
(plus \$5 per photograph)

Electronic submissions should be emailed to:

[ncccrystalball@charter.net](mailto:ncccrystalball@charter.net)

Use Word. Mailed submissions and all payments should go to PO Box 416, Cambridge, OH 43725. Deadline is 10th of preceding month. Ads must be paid in advance. Show listings are FREE; send info to PO Box or e-mail address 60 days before event.

### ALADDIN LAMP BOOKS

Aladdin Electric Lamps  
SB, 229 pp., \$24.95 to C.Collectors PP.  
J.W. "Bill" Courter  
brtknight@aol.com  
550 Pioneer Ln. Phone 270-488-2116  
Calvert City, KY 42029

### Max Miller

Elegant Glassware • Books • Fiesta  
...and more  
THE MARKET PLACE  
(713) 467-0450 - BUS 10910 OLD KATY RD.  
(713) 461-1708 - RES HOUSTON TX 77043  
MMXGLASS@aol.com

### Cheshire Cat Antiques

Specializing in elegant depression to mid-century era glass and vintage kitchen glass.

Francee Boches > 305-884-0335  
fboches@cheshirecatantiques.com

Pull up a Mouse!  
Shop 24 hrs a day at  
[cheshirecatantiques.com](http://cheshirecatantiques.com)



### BAKER FAMILY MUSEUM

805 CUMBERLAND ST.  
CALDWELL, OHIO 43724  
740-732-6410  
bakermuseumnellbaker@msn.com

Wed & Thurs 9-4; Fri - Sat 9-5

## Classified Ads - Reach over 1,000 avid collectors of Cambridge Glass

### CRYSTAL LADY

1817 Vinton St. Omaha, NE 68108  
Bill, Joann and Marcie Hagerty  
Shop 402-341-0643 Home 402-391-6730

Specializing in Elegant Glass & Collectibles  
[www.crystalladyantiques.com](http://www.crystalladyantiques.com)

Glen & Carolyn Robinson  
White Rose Antiques  
Specializing in Depression Era Glassware

2454 McFarland Road  
York, SC 29745

803-684-5685  
gandcrobinson@aol.com  
[whiteroseglassware.com](http://whiteroseglassware.com)

### CRYSTALLINE COLORS

Cambridge • Fostoria • Elegant Glass  
Penny Court Mall, Cambridge - 2 booths  
Riverfront Antique Mall  
New Philadelphia, OH (I-77, exit 81)  
Booth #'s 626 and 616

Lynne R. Franks 216-661-7382

### GLASS FROM THE PAST

Maureen Gillis



[www.glassfromthepast1.com](http://www.glassfromthepast1.com)  
email: maureen@glassfromthepast1.com

### Cherished Collectibles

Shopping 24 hours in our online store  
Glassware, Figurines, Collectors' Plates

[www.cherishedcollectibles.com](http://www.cherishedcollectibles.com)  
Elegant and Depression Era Glass

### TWEAK COLLECTIBLES

Specializing in Elegant Glass  
BUY & SELL  
WANTED: CAMBRIDGE TURKEYS  
417-742-3653  
[btummons@aol.com](mailto:btummons@aol.com)

### VIRTUALATTIC AT THE GLASS CHALET

SPECIALIZING IN ELEGANT DEPRESSION ERA GLASS  
Sandra L. Bridwell-Walker PO Box 3448  
William P. Walker Cleburne TX 76033-3448  
Phone: 817-202-0940 [www.virtualattic.com](http://www.virtualattic.com)  
Sandy's Cell: 817-559-0328 [virtualattic@sbcglobal.net](mailto:virtualattic@sbcglobal.net)  
theglasschalet@sbcglobal.net  
Bill's Cell: 817-357-7084

### Daugherty's Antiques Jerry and Shirley Antiques & Collectibles-Mostly Glass

[www.daughertys-antiques.com](http://www.daughertys-antiques.com)  
email: sdaugh2515@daughertys-antiques.com

Shows & Mail Orders 2515 Cheshire North  
402-423-7426 (evenings) Lincoln, NE 68512

### THE GLASS HOUSE ANTIQUE MALL Furniture, Pottery, Glass Antiques and Collectibles I-70 Exit 146, East on SR 40

8825 E. Pike  
Norwich OH 43767 TEL 740-872-3799

### Milbra's Crystal Buy & Sell

Replacement and Matching  
Milbra Long (817) 645-6066  
Emily Seate (817) 294-9837  
PO Box 784  
Cleburne TX 76033

Specializing in  
Cambridge  
Fostoria, Heisey  
and others

E-mail: [longseat@sbcglobal.net](mailto:longseat@sbcglobal.net)  
[www.fostoriacrystal.com](http://www.fostoriacrystal.com)

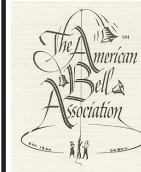
### ISAACS ANTIQUES

(740) 826-4015

See our booths in Penny Court Mall in Cambridge and at White Pillars Antique Mall (Route 40, one mile west of I-70 Norwich, OH • Exit #164)

### The American Bell Association International, Inc.

7210 Bellbrook Drive  
San Antonio, TX 78227-1002  
[www.americanbell.org](http://www.americanbell.org)



### MARGARET LANE ANTIQUES

2 E. Main St. New Concord, OH 43762  
Lynn Welker (740) 826-7414

Cambridge Glass Matching Service  
Hours: Mon-Fri 10-12 AM, 1-5 PM  
or by appointment

### Our House Antiques



Linda and David Adams  
Las Vegas, NV  
1-800-357-7169



[www.OurHouseAntiques.com](http://www.OurHouseAntiques.com)  
email: [David@OurHouseAntiques.com](mailto:David@OurHouseAntiques.com)

National Cambridge Collectors, Inc.  
PO Box 416  
Cambridge OH 43725

website: [www.cambridgeglass.org](http://www.cambridgeglass.org)  
e-mail: [ncccrystalball@charter.net](mailto:ncccrystalball@charter.net)

## Friends of Cambridge – Annual Fund

NCC exists through member giving using an Annual Fund system to raise operating funds and to ensure the preservation of Cambridge glass for future enthusiasts. The Annual Fund uses a common member "renewal" date and NCC sends out Annual Fund materials to everyone once a year during March/April. There are no monthly reminders or monthly renewal dates. The Annual Fund is NCC's primary means of support and all Annual Fund gift recognition levels are per household and include membership for all adults within the household. Additionally, each household will receive a subscription to the Crystal Ball newsletter, unlimited admissions to the museum, and rights to vote in elections for the Board of Directors. Multiple households at the same address are welcomed. NCC is a 501C(3) organization and Annual Fund gifts are allowed as a tax deduction under Section 170 of the Internal Revenue Code.

### Levels of Membership

Patron	\$35
Benefactor - Century	\$100
Benefactor - Mardi Gras	\$200
Benefactor - Japonica	\$500
President's Circle	\$1,000

President's Circle includes Convention registration for two members in the household and one copy of any new NCC publications.

## *The National Museum of Cambridge Glass*

Located at 136 S. 9th Street  
in downtown Cambridge,  
Ohio

**Closed for the  
season  
see you in April**

