



Cambridge Crystal Ball

Published by the National Cambridge Collectors, Inc. as a resource which informs, invites and inspires the continued preservation of the glass produced by the Cambridge Glass Company of Cambridge, Ohio for future generations.

Issue No. 449

June/July 2011

Come Sail Away - By Julie Buffenbarger

Cambridge, Ohio is the ideal location offering a variety of day-trip excursions to satiate your adventurous side, your simpler side, and the side that needs to relax and unwind! Not only is it mecca to our beloved Cambridge glass, but it also holds many other treasures along its shores.

Travel an hour or simply stay close to Cambridge, enjoy your time in Ohio. To plan some daytime excursions during your stay, please visit The Guernsey County Visitors and Convention Bureau at www.visitguernseycounty.com or review the booklet in your convention packet when you arrive.

Better yet, plan a vacation around your trip to Cambridge by exploring the website Discover Ohio, www.Discoverohio.com. They offer travel tips, regional insights, and a variety of excursions throughout Ohio.

As a born and bred Ohioan, I offer a few of my favorite locations near the Cambridge Sea.

If you are a golf lover, visit Longaberger Golf Club. Golfweek Magazine rated Longaberger Golf Club # 1 in Ohio in its recent 2010 state-by-state rankings. Don't miss out on playing one of the best courses in the Country offering one of the nation's most superb golfing experiences. Longaberger Golf Club was recently Rated #4 Public Course in the country by Golf World's, 2008 Readers Choice Award. This jewel of the sea is only 40 minutes from Cambridge, Ohio. You can learn more about Longaberger Golf Course at www.longabergergolfclub.com.

If you're feeling too attached to your smartphone or computer, it sounds like you need to spend some time in the simple life of Amish Country Ohio. From cozy bed and breakfasts to delicious Amish food to hand-crafted furniture: spending a day or a few days in among the Amish is just what the doctor ordered. Get perspective on things while touring tranquil nature trails on bikes or just walking. There's plenty of opportunity to bring some of the Amish living home with you. Browse stores of all sorts, from cheese factories, to quilting, to furniture to clothing. And you can't beat the quality! Check out several

of the pre-made Amish Country Ohio Itineraries at www.DiscoverOhio.com, or plan your own adventure today!

A few of my favorite locations are Coblentz Chocolates, Breitenbach Winery, and many of the local restaurants (get the homemade pie...diet when you get home!) The Simpler Life is a mere one hour away.

Want to talk to the animals? The Wilds is one of the largest and most innovative wildlife conservation centers in the world. Located on nearly 10,000 acres near Cambridge, Ohio, it is home to rare and endangered species from around the world. Visitors can board a guided Safari Transport or Open-Air Safari to see and learn about the animals living in open-range habitats, including a visit to the Mid-Sized Carnivore Conservation Center.

If you'd like to just stay in Cambridge, I highly recommend the Guernsey County Farmer's Market. It is a must make stop for me the week of Cambridge! Over 25 small farmers and producers gather each Friday from May through October on the Court House Square under a canopy of trees on a lush lawn in historic Downtown Cambridge. Enjoy seasonal fruits and vegetables that include berries, pumpkins and gourds, starter vegetables, flowers & plants, herbs - live and fresh cut, hanging baskets, maple syrup, local honey, seasoning blends, frozen local meats, organic produce, baked goods plus a limited number of handmade crafts & art that includes jewelry, candles, clothing, Amish made baskets, and indoor and outdoor yard art. If you are interested in the wonderful bakery....I suggest getting there early!

If you setting sail to find some additional glass and collectible treasures....it is your opportunity to participate in collecting stamps for your Treasure Chest card. This convention we will showcase some local antique stores in the area. Gather a "sea themed" stamp from each vendor and enter to win an "Ohio-Themed Basket" full of goodies! Details of vendor locations and Treasure Chest rules will be located in your convention packet!

National Cambridge Collectors, Inc.

PO Box 416 Cambridge, OH 43725-0416

Friends of Cambridge – Annual Fund

NCC exists through member giving using an Annual Fund system to raise operating funds and to ensure the preservation of Cambridge glass for future enthusiasts. The Annual Fund uses a common member "renewal" date and NCC sends out Annual Fund materials to everyone once a year during March/April. There are no monthly reminders or monthly renewal dates. The Annual Fund is NCC's primary means of support and all Annual Fund gift recognition levels are per household and include membership for all adults within the household. Additionally, each household will receive a subscription to the Crystal Ball newsletter, unlimited admissions to the museum, and rights to vote in elections for the Board of Directors. Multiple households at the same address are welcomed. NCC is a 501C(3) organization and Annual Fund gifts are allowed as a tax deduction under Section 170 of the Internal Revenue Code.

Levels of Membership

Patron	\$35
Benefactor - Century	\$100
Benefactor - Mardi Gras	\$200
Benefactor - Japonica	\$500
President's Circle	\$1,000

President's Circle includes Convention registration for two members in the household and one copy of any new NCC publications.

National Museum of Cambridge Glass Open April thru October only



Located at 136 S. 9th Street in downtown Cambridge, OH
Wed-Sat 9 a.m. - 4 p.m. - Sunday Noon - 4 p.m.
General Admission \$4 - Seniors & AAA members \$3
NCC Members and children under 12 FREE

Contacts

NCC Museum [open April thru October only]
(phone)..... (740) 432-4245
(fax)..... (740) 439-9223

David Ray, President.....e-mail: Westervillesh@hotmail.com
Freeman Moore, Secretary.....e-mail: freemanmoore@verizon.net
Helen Klemko, Crystal Ball Editor.e-mail: ncccrystalball@charter.net

Address Changes

Please send address changes to:
Membership - NCC
PO Box 416
Cambridge, OH 43725
or by e-mail to:
tarzandeel@verizon.net

Websites

- **NCC WEBSITE**
www.CambridgeGlass.org
- **MIAMI VALLEY STUDY GROUP WEBSITE**
www.mvsg.org

Officers & Committee Chairs

President	David Ray
Vice-President	Larry Everett
Secretary	Freeman Moore
Treasurer	Mike Strebler
Sergeant-at-Arms	Mark Nye
Acquisitions	Lynn Welker
Archivist	Mark A. Nye
Auction	Jack and Elaine Thompson jack1746@roadrunner.com
Budget & Finance	Lynn Welker
By-Laws	Mike Strebler
Convention	Rick Jones
Crystal Ball	Nancy Finley & Julie Buffenbarger
Endowment	Helen Klemko, Executive Editor
Facilities	Larry Everett
Glass Dash	Carl Beynon
Glass Show & Sale	Larry & Susan Everett
Membership	Mary Beth Hackett & Joy McFadden Julie Buffenbarger, Member Services Tarzan Deel, Database
Museum	Cindy Arent
Nominating	Rick Jones
Program	David Ray
Projects	Carl Beynon
Publications	Mark A. Nye
Publicity	Frank Wollenhaupt
Social Media Director	Alex Citron
Study Group Advisory	Jeannie & Freeman Moore
Technology	David Adams, Webmaster

Board of Directors

Cindy Arent	Larry Everett	Ken Filippini
Rick Jones	Helen Klemko	Sharon Miller
Freeman Moore	Mark Nye	David Ray
Mike Strebler	Lynn Welker	Frank Wollenhaupt



PRESIDENT'S MESSAGE

Amending Our By-Laws and Constitution

Over the last 38 years, periodic changes have been made to the Constitution and By-Laws of the National Cambridge Collectors (NCC), Inc. Last fall, members of the NCC's Standards Committee met to take a close look at our Constitution and By-Laws to ensure they accurately reflect our current practices and desires. The Standards Committee consists of Sharon Miller, Susan Everett, Larry Everett, Mike Strebler, and me. To our surprise, several updates are needed.

Five years ago, the Board of Directors (BOD) voted to adopt the current Annual Fund model. With this new model, Associate Memberships were eliminated and everyone became a Friend of Cambridge - well almost. Based upon our current Constitution, members are identified as voting members, honorary members, or lifetime members. Because our current Constitution states voting members must be at least 18 years old, anyone under the age of 18 is not eligible to be a member of NCC. Once the BOD identified this situation, we became aware additional changes in the Constitution are needed. The BOD proposes that a Junior Membership be added to the Constitution so ANYONE desiring membership will have the opportunity for membership. ***A Junior Membership will be open to anyone under the age of 18.*** The BOD is asking the Membership Committee to creatively develop the Junior Membership in order to encourage our youngest members to become life-long enthusiasts of Cambridge glass.

The most significant Constitutional amendment being proposed is the clarification of Voting Membership. Prior to the adoption of the Annual Fund model, anyone 18 years of age or older was required to pay annual dues in order to receive voting privileges. Our current practice no longer dictates that every person within a household must pay annual dues. Thus, the BOD proposes an amendment stating that ***anyone 18 years of age or older residing in a household that participates in the Annual Fund may be a voting member of NCC.*** In order to receive these privileges, the names of all household residents who desire to be a voting member of NCC be included in the Annual Fund participation materials.

In addition to updating our Constitution and By-Laws, the Standards Committee presented the creation of a new governance structure. Currently, NCC functions by having 20 committee chairs report directly to the BOD. This government structure requires the BOD to be involved in nearly every committee decision, which is often not necessary. As a result, the BOD proposes creating five new operational vice-president positions responsible for five major areas. The five operational divisions include: Museum, Development, Membership, Education, and Administration. The vice-presidents will be appointed by the BOD and will be responsible for leading and managing each of their respective divisions. Each vice-president position will be given spending and decision-making authority within

their respective divisions. All major decisions or expenditures will be presented to the BOD. Pending approval by the membership at the 2011 Annual Meeting, the five vice-president positions provide an opportunity for all members to become more involved in securing the future of NCC. If you desire more information about serving as an operational vice-president, then please contact a member of the BOD for more information.

For more details about the proposed amendments to the Constitution and By-Laws, please refer to the official BOD proposal outlined on pages 4 and 5.

The 2011 Annual Fund Campaign is on pace to at least equal the 2010 total. Thank you to those members who have already contributed to the 2011 Annual Fund. If you have not returned your Annual Fund pledge for 2011, please do so at your earliest convenience. Your participation in the Annual Fund is one step toward securing NCC's mission. We look forward to receiving your continued support in 2011.

By the time you receive this issue of the Crystal Ball, the 2011 Annual Convention will be only two weeks away. Needless to say, I am looking forward to sharing an exciting week of fellowship with fellow Cambridge glass collectors. Convention co-chairs, Julie Buffenbarger and Nancy Finley, have been working very hard to ensure the success of the 2011 Annual Convention. If you have not mailed your convention registration, it is not too late. Please return your convention registration and payment as soon as possible so Julie and Nancy can make appropriate preparations. I look forward to seeing you at Convention.

David

David Ray
westervillesh@hotmail.com

National Cambridge Collectors, Inc. **Constitution Amendments – 2011**

Introduction

As part of NCC's commitment to Best Practices in non-profit organization management, the Board of Directors established a Standards Committee as part of our participation in an accreditation study. We are believed to be the first and only depression glass preservation organization to be participating in this study.

There are a number of areas in our governance that were seen as ripe for updating to meet today's needs of our organization and membership. Three specific areas require revisions to our Constitution. Per our existing Constitution, these changes need to be announced to the membership sixty days in advance of the Annual Meeting and be "sent" to members at least 10 days in advance of the Annual Meeting. These changes were announced to the membership at our March 2011 quarterly meeting. The specific Constitution and By-Laws amendments included in this report were approved by the Board of Directors on May 16, 2011 and are being published in the June Crystal Ball. The Board will move for their adoption at the Annual Meeting on June 25, 2011.

The specific areas being modified are: Mission Statement, Membership Classifications and Committee Structure with the creation of Operational Officers.

MISSION STATEMENT

The present Constitution includes a section on Objectives, not Mission. It reads:

ARTICLE II – OBJECTIVES

Section 1:

The members of this organization shall meet regularly, for the purpose of acquiring a broader knowledge of glassware manufactured by The Cambridge Glass Company in Cambridge, Ohio (1901-1954) and through instruction, discussion and study, actively promote the preservation and collection of Cambridge Glass.

Section 2:

The primary objective of this organization is to establish and maintain a permanent museum in Cambridge, Ohio (Guernsey County) for the display and study of Cambridge Glass. This organization shall operate on a non-profit basis and all monies realized will be applied to this end.

Discussion

To contemporize our Constitution it is believed that we need to substitute a Mission Statement for the Objectives and it needs to be more expansive than the museum focus currently written.

PROPOSED CONSTITUTION REVISION

To eliminate ARTICLE II – OBJECTIVES of the NCC Constitution and replace with the following:

ARTICLE II – MISSION

Section 1:

The mission of the National Cambridge Collectors, Inc. (NCC) as

a non-profit Ohio organization is to inform, invite and inspire the continued preservation and education about the handmade glassware produced by The Cambridge Glass Company into perpetuity.

Section 2:

As a national organization, we seek to accomplish our preservation and education mission through many sources including meetings and fellowship, book products, newsletters, a website and other electronic communication and importantly, through the establishment and maintenance of a permanent museum in Cambridge Ohio supported by a strong Endowment Fund.

MEMBERSHIP

Several years ago, NCC shifted from a "dues-paying individual membership" model to a "household-based Annual Fund philanthropic support" model. Operationally, we shifted from monthly renewal cycles depending on when someone joined, to a once per year campaign model. Our constitution needs to be updated to reflect today's processes. Additionally, a category of Junior Membership is being added and a slight modification being made to the Lifetime Membership category.

The current Constitution has a five section article on Membership. As a reminder, the Lifetime Membership has already been changed to read by a "75% majority of the Board ..." vs. the present "unanimous vote" of the Board. This will be updated on our website when the changes offered here are approved.

ARTICLE III – MEMBERSHIP

Section 1: Types of Membership

There will be two types of membership, namely voting and honorary.

We are proposing this be revised to:

ARTICLE III – MEMBERSHIP

Section 1: Types of Membership

Membership types will include Voting, Lifetime, Honorary and Junior.

The present Section II reads as follows:

Section 2: Voting Membership

Any person, age 18 or over, upon payment of prescribed yearly dues, is eligible to become a voting member of the organization. Other qualifications shall be as stated in the by-laws.

We are proposing that the following amendment replace the existing Article 11, Section 2:

ARTICLE III – MEMBERSHIP

Section 2: Voting Membership

Any person age 18 or older residing in a household that participates in the Annual Fund membership campaign may be a voting member in NCC. The participating household must specifically indicate in their Annual Fund participation materials which household members will be members of NCC.

A new section will be added:

Section 5: Junior Membership

Persons under the age of 18 may be Junior members. The Board of Directors shall from time to time determine other qualifications of junior membership.

The current Section 5 will be renumbered as Section 6.

There will also be minor amendments required to the NCC by-laws to add conformity to the new Constitution revisions.

CURRENT BY-LAW

ARTICLE VIII – MEMBERSHIP DUES

Section 1: Annual Dues

Annual membership dues shall be determined by the Board of Directors.

Proposed Revision:

ARTICLE VIII – MEMBERSHIP SUPPORT PARTICIPATION

Section 1: Annual Support

The organization's mission accomplishment is largely funded through the generous support of its members. NCC conducts an Annual Fund campaign for financial support. Specific levels of support participation will be determined by the Board of Directors. All adult members (age 18 and over) of a participating household may be voting members in NCC (per the Constitution) and will be called Friends of Cambridge. Participating households will be asked to remit their support within 90 days of the Annual Fund promotion. The Board of Directors will consider exceptions on an as-needed basis.

Section 2: Associate Members

This section will be eliminated.

Section 3: Due Date

This section will be eliminated.

Another important amendment to the Constitution ... **On Section 3: Lifetime Membership, the phrase “or partner” will be added after the word “spouse” of a lifetime member.** This will apply while a lifetime member is alive and also provides a defined survivorship benefit.

COMMITTEE STRUCTURE/OFFICERS

The present Constitution calls for four officers – a President, Vice-President, Secretary and Treasurer. The by-laws discuss the duties of each of the officers. The by-laws also dictate 8 “standing committees” – Membership, Project, Program and Entertainment, Budget and Finance, Publicity, Convention, Study Group Advisory and By-Laws. The by-laws also allow for other “ad hoc” committees to be appointed as the President and/or Board of Directors see as necessary.

The committee structure has served the club well for over 35 years but is in need of an update. A new management structure was laid out in our Dawn Long-Range Strategic Plan and its utility has been confirmed by our new Standards Committee and their accreditation project.

As such, the Board is looking to create five new Vice President positions organized into functional divisions that the club has

been following for the last few years for financial reporting and budgeting:

- Museum
- Development
- Membership
- Education
- Administration

All committees will be organized underneath one of these divisions. Each division will be led by a Vice President who is appointed by the Board of Directors. Each VP will have spending authorization for the club within their specific scope of their responsibilities. At present, only the President and Treasurer have spending authorization unless they delegate it to someone for a specific task.

To implement this organization, we will add one new paragraph to Article V – Officers, in the Constitution

CURRENT:

ARTICLE V – OFFICERS

The officers of this organization shall be a President, Vice President, a Secretary and a Treasurer elected from the Board of Directors by the Board of Directors annually following the Annual Meeting. All officers shall hold office for one year or until their successors are elected and qualified.

REVISED:

Add new paragraph to the above: The Board may also appoint up to five operational vice-presidents to manage organization divisions including Membership, Museum, Education, Development and Administration. These officers need not be Board members (although they could be) and would serve the same annual term as the other officers.

By-Laws Revision

Concurrent with the adoption of the Constitution changes proposed for Officers, we will be recommending:

- Elimination of **Article V – Committees, Section 1** on Standing Committees
- In its place, we recommend modifying Section 2 – Ad Hoc Committees to read simply “Such committees as are necessary to manage the affairs and mission accomplishment of the organization shall be appointed by the President and/or the Board of Directors and shall conform as necessary to the divisional responsibilities articulated in the Constitution, Article V”
- We are also recommending the elimination of **Article VI – Duties of Committees**. That article is no longer needed with the elimination of Article V.
- All subsequent articles will be renumbered to maintain the proper sequencing of By-Law articles

All of the above Constitution and By-Laws revisions were approved by the Board of Directors on May 16, 2011. The Board had established a special committee in March 2011 to prepare these revisions. The members were Rick Jones, chair, Larry Everett and Alex Citron.

On the Road Again.....

By David Ray

My final glass-related adventure prior to Annual Convention was to Denver, Colorado to attend the 37th annual "Array of Color" glass show and sale hosted by the Rocky Mountain Depression Glass Society. The glass show is located in the southern suburb of Castle Rock. I was very pleased that fellow NCC member, Jack Thompson, volunteered to join me on this trip. For several weeks prior to leaving, Jack and I communicated with NCC members living in the Denver area and arranged for some exciting home visits.

My flight arrived in Denver about 45 minutes late due to strong winds and an unexpected snow storm. The temperature had been in the 70's earlier on Friday, but a strong cold front quickly changed the weather conditions. Snow accumulation was limited to the grassy areas, so there were no major complications. Due to the two-hour time change, I was awake and ready to go around 3:45 AM on Saturday morning. With some effort I was able to catch a couple additional hours of sleep before leaving for the glass show.

Having never previously attended the Array of Color glass show, Jack and I had no idea of what to expect. We arrived at the glass show location about 90 minutes prior to its opening. We were first in line. In addition to the glass show, members of the Rocky Mountain Depression Glass Society volunteered to create 10 glass displays. Four of the displays consisted of mainly Cambridge glass. NCC member, Michael Horine, proudly displayed over 75 ball jugs and water pitchers from his collection. There were several gorgeous Cambridge ball jugs and doulton jugs on display along with pitchers produced by other glass companies. The other Cambridge displays included Willow Blue Decagon, pink Decagon, and Rose Point. In addition, there were displays of Duncan, Imperial, Tiffin, Fostoria, and Paden City.

At 10:00 AM the doors to the glass show opened. Not knowing what to expect, Jack and I headed off in different directions hoping to find a piece of Cambridge glass to add to our collections. Thirty-four dealers had brought their finest Depression glass to sell. After a quick trip around, I found two items I wished to purchase, but there were more items that had caught my interest. My second and third trip through the glass show was much more deliberate. In total, I made four purchases. They included a large size Carmen Mount Vernon sugar and creamer, 3011 Carmen cordial, amber covered ginger jar etched Cleo, and a Krystol Shell bowl. I was very pleased with my purchases and was happy to have had the opportunity to speak with several of the glass dealers. Annual Convention Glass Show dealers David and Linda Adams and Sandy Bridwell-Walker were set up.

After Jack and I finished shopping, long-time NCC members, Tom McLean and Don Spencer, agreed to chauffeur us around to some of Denver's finest antique malls. We stopped at the Brass Armadillo Antique Mall where we each made a nice purchase. Jack acquired a 3500 tall comport having the Elaine etching and platinum trim. I was fortunate to find a bud vase having the Talisman Rose decoration and a large graduated cylinder possessing the triangle C. Over the years, I have inspected hundreds of graduated cylinders and this is the first one I have ever found having the Cambridge mark. We were both pleased with our purchases.

After an additional shopping adventure and dinner at Racines, we returned to see Tom and Don's collection. Because Tom and Don

will be moving soon, the majority of their collection was packed. Nevertheless, we were fortunate to see some beautiful Cambridge items and heard some amazing stories about how they had acquired several of them. After hearing their stories, I concluded that Glass collecting was much easier back in the late 1970's and early 1980's. I must thank Tom and Don for being gracious hosts. NCC can look forward to seeing Tom and Don at the 2012 Annual Convention.

After our visit with Tom and Don, Jack and I were invited to visit the home of Tom Cotter and Tina Borderson. Although Tom and I have never officially met, we did exchange a few emails about 10 years ago. Tom has been collecting Cambridge glass for several years and has built a very nice collection. Tom shared stories about his trips to Cambridge and a very memorable visit by Bill and Phyllis Smith. Tom and Tina have not returned to Cambridge for several years, but hope to return in the near future. I must thank Tom and Tina for opening their home and sharing their Cambridge glass collection.

Our stay in Denver lasted only a couple days, but it was packed full of great conversations, great glass, and many fond memories. Thank you to everyone who took time out of their busy schedules to make our trip to Denver very memorable.



L-R: David Ray, Tina Broderson, Tom Cotter and Jack Thompson



L-R: Don Spencer, David Ray and Tom McLean

Nomination: The Rose Award – 2011

Betty Sivard

Betty Sivard is a docent at The National Museum of Cambridge Glass. When visitors arrive at the museum, Betty's warm and friendly personality quickly puts them at ease. Before they leave, they have not only learned about the history of The Cambridge Glass Company and the handmade glassmaking process, but also about everything there is to see and do in Cambridge/Guernsey County!

Many museum visitors even send Betty cards when they have returned home, thanking her for the wonderful tour, helpful hints and warm hospitality.

If visitors arrive at the museum shortly before closing time, Betty puts her personal plans aside and stays with them until she is sure they have gotten the attention they deserve. This type of service is very rare today.

Tourists that travel with their pets are fortunate to cross Betty's path. If it is a hot day, she encourages them not to leave their dog in the car. She has been known to give the dog a drink while it is waiting outside for its owners and on special occasions, lets the visitors keep their pet in the museum entrance area. Betty's kindness is felt by visitors, as well as other museum staff and volunteers.

Already this month, a couple returned to the museum for a second visit. They were quick to tell us that it was Betty who had guided them on their first tour and how much they had enjoyed themselves.

Betty always goes above and beyond for not only the museum, but also Cambridge/Guernsey County. If she sees people at a local restaurant that visited the museum that day, she greets them and checks to be sure their visit to our area is going well.

Her dedication as a museum docent goes far beyond the regular hours she is paid. During the off season, Betty volunteers to clean glassware and help prepare the museum for the next season in any way possible. We are very fortunate to have Betty Sivard as a tourism ambassador, always spreading the word about just how much our area has to offer people who stop for a visit!

Nomination by: Cindy Arent and Sharon Miller



Museum Docent Betty Sivard Receives

“The Rose Award”

Each year during National Tourism Week in May, the Cambridge/Guernsey County Visitors & Convention Bureau recognizes those who have made significant contributions to the tourism industry in Cambridge/Guernsey County. This year, Cindy Arent and Sharon Miller nominated museum docent, Betty Sivard, for The Rose Award. ROSE is an acronym that stands for “Recognition of Service Excellence”. The award is given to a non-managerial employee who has demonstrated one-on-one contact, positively influencing a visitor's experience in Guernsey County.

In late April, we received word that Betty had been chosen by the Ohio Travel Association staff as the recipient of the 2011 Rose Award.

The Tourism Awards Ceremony was held on Thursday, May 12 at Salt Fork Lodge. We would like to congratulate Betty on a job well done!

Salt Fork Lodge recently hosted 40 AAA travel agents from around Ohio for a portion of a FAM tour of Xanterra properties. Keith Cook, manager of Salt Fork Lodge, invited us to attend a cook-out with the travel agents. During the evening we were able to mingle with the guests and during dinner we spoke to the group about what the National Museum of Cambridge Glass has to offer. Area representatives attending were: (L-R kneeling) Heather Dickson, Director/Cambridge Main Street; Cindy Arent, National Museum of Cambridge Glass. Standing (L-R) Katrina Mazahur, The Living Word; Debbie Robinson, Director – Cambridge/Guernsey County Visitors & Convention Bureau; Dave Adair, Byesville Scenic Railway; Jonett Haberfield, Dickens Victorian Village; Sharon Miller, National Museum of Cambridge Glass; and Cindy King, The Wilds.



“UNDER THE SEA”

Maritime schedule

WEDNESDAY, JUNE 22, 2011

2:00 PM	Registration Opens	National Museum of Cambridge Glass
6:00 PM	Second Dog Watch Picnic	National Museum of Cambridge Glass

THURSDAY, JUNE 23, 2011

9:00 AM	Convention Registration Opens “Coffee with Cambridge”	National Museum of Cambridge Glass
10:00 AM	First Time Conventioneers & Mentors and Friends Programs Visit the Display Rooms at the Museum and interact with collectors who have assembled the displays for 2011.	
11:00 AM	Program - Cambridge 101: Learn the Basics to Cambridge Glass Identification <i>Presented by Jim Finley and Jack Thompson</i>	
12:00 PM	TREASURE CHEST SEARCH: Set sail to one of the many local glass dealers on the “treasure chest card” or enjoy some free time shopping or visiting local attractions. (More information is forthcoming on the Treasure Chest Search.)	
4:00 PM	Museum and Registration Closes	
6:00 PM	Program - “Sea Shell Line” <i>Presented by Mike Strebler and Lynn Welker</i>	Pritchard Laughlin Conference Room

FRIDAY, JUNE 24, 2011

8:00 AM	Registration Opens Pick up numbers for Glass Show Entry	Pritchard Laughlin, Galleria
10:00 AM	Drop off “Under the Sea” Themed Displays and begin Pirate’s Treasure Raffle	
12:55 PM	Announcement of Pirate’s Treasure Raffle Winner	
1:00 PM	Opening of the Show and Sale	Pritchard Laughlin Exhibit Hall
5:00 PM	Closing of Show and Sale	
5:30 PM	Neptune’s Cocktail Reception	Pritchard Laughlin Galleria
6:00 PM	Captain’s Feast Recognition of Volunteers & Awards Presentations Treasures from the Sea Auction	Pritchard Laughlin Galleria
8:00 PM	Bring your “Bounty and Brag” & Glass Identification	Pritchard Laughlin Civic Center

SATURDAY, JUNE 25, 2011

7:00 AM	Glass Dash, Early Bird Admission	St. Benedict’s Gymnasium
8:30 AM	Glass Dash, General Admission	St. Benedict’s Gymnasium
11:00 AM	Close of Glass Dash Opening of Show and Sale	Pritchard Laughlin Exhibit Hall
11:00 AM	Mermaid’s Madness Silent Auction	
12:30 PM	Program - “Cleaning Cambridge Glass” <i>Lunch and Learn with Barbara Wyrick and Linda Roberts</i>	Pritchard Laughlin Conference Room
4:00 PM	Closing of Show and Sale End of Mermaid Madness Silent Auction	
6:30 PM	Salty Dog Cocktail Reception	Pritchard Laughlin Galleria
7:30 PM	Sea Shore Supper	Pritchard Laughlin Galleria
8:00 PM	Announcement of Mermaid Madness Silent Auction & Treasure Chest Winners Annual Crew Meeting	Pritchard Laughlin Galleria

SUNDAY, JUNE 26

8:30 AM	NCC Board of Directors Meeting	National Museum of Cambridge Glass
1:00 PM	Cambridge Glass Worker Reunion	National Museum of Cambridge Glass

ONLY QUESTIONS - NO ANSWERS

By Frank Wollenhaupt (fewvic303@sbcglobal.net)

Why do we collect what we do?

This seems like a question everyone asks and wants to know. When we meet a new collector, it is normally one of the first or second questions we ask.....
What do you collect?

I don't think we ask the question because we are nosey but because we hope that they collect something we might know about and then can carry on a conversation. It's funny that we are being asked the same question in our convention registration. "What is your Major Field(s) of Collecting?" How many of you open your convention packet and look at the list of members to see where they are from and then what they collect? Do you then track down someone that collects the same thing that you do?

I have found that some collectors hone in on one etching, pattern or color and then they put blinders on to all the other great things Cambridge made. They even study all the books and make notes of the sizes (6 5/8 in) and when they find the item that measures (6 3/4in) they go into a tail spin.....they can't understand how this can be. They don't understand the term "HAND MADE GLASS".

What about the person that uses a magnifying glass to look an item over. All the great glass they might be missing because of roughness on a mold seam or a shear mark.

Have you ever given names to different collectors? I don't mean call people names but name the way they collect.

What about the person that needs to be in the center of all the bidding at an auction and must win every bid for the showy items. I call them **Peacock** collectors. They only collect the real flashy pieces. The more gold and silver the piece has the better. This collector tends to overlook a lot of great items just because they don't shine enough.

What about the **stealth** collector? He is someone in

your area that people know but can't give you his name. They know he collects Cambridge but that is about all they know about him. He is never one to draw attention to himself but shows up with great items time after time. How does he do it? Where does he find all the great buys?

Then we have the **vacuum** collector (I think I might fit into this category). They are people that collect everything. If Cambridge made it, they want it. This person likes Cambridge for Cambridge.....they aren't worried or excited if an item is off by 1/16 of an inch. They just like the hunt and owning it. These are the people that might not have the showiest of collections but you can bet it will be one of the most interesting ones you will see.

Bill Smith was a vacuum collector. If you attended any of the auctions that Phyllis had or the last one at the Smith's home, you had a chance to see all the different items that Bill and Phyllis put together over the years. I guess being around them for all those years has rubbed off on me.

So where do you fit in? What do you collect? It doesn't really matter as long as you are happy and what you collect is Cambridge Glass.

Hope to see you all at the Convention and sale.....who knows, you might get sucked up in to another collection.



by Larry Everett

This report is provided to keep members up with what's happening on the world's largest Internet Auction site. It is not meant as an educational tool, nor as a pricing guide, and we cannot guarantee the accuracy of listings herein.

Greetings from eBay land! Please forward interesting news to me at: heartlamps@sbcglobal.net. Susan and I are looking forward to seeing you at convention!

Rose Point

The leadoff hitter this month is a lovely #119 basket that was originally available from the factory in Rose Point or Wildflower. The basket sold on March 29th for \$340.65. Next we have the very elusive 3900/52 - ¼ pound butter. Rose Point collectors are lucky indeed to have one of these in their collection. This gem sold on April 3rd for \$306.25. The last item in Rose Point is a real rarity. It looks like the 3-lite tri-level candlesticks on top, but has a round base. If anyone knows more about these, please let me know. The pair sold with a single bid on April 10th for \$199.95. Unfortunately, both of the sticks had the top candle cup cracked, probably from letting the candles burn down too low.

Other Etchings

I hope Helen gets the photo for this item. A lovely Elaine 1402 (Tally Ho) 2 part mayo with a Sterling silver rim sold on March 20th for \$59.87. Here's where it gets weird. It was stated that: "This bowl has a lid that does not have the etch on it but I am fairly certain that the lid is original to this bowl." Who knew that a Cambridge Arms nappy would work for a lid? Sometimes I just scratch my head and wonder how some of these stories get started. On April 18th a lovely 8" 3400/156 - 12 oz. Decanter with Diane etching was stolen for only \$22.99. A stunning No. 300 - 7" 3-footed Candy Box and Cover in pink with GE Dresden Rose etching brought \$47.03 on April 4th. A beautiful 1240 - 12" Oval Refectory Bowl, E739 in a quite desirable Willow Blue color ended at \$63.99 on April 2nd. On April 1st a Pink covered butter with E520 sold for \$58.99. A Lt. Emerald covered 7" jug with E695 ended at \$225. On April 4th, a #39 - Pomona Green (Avocado) 11-1/2" Bowl, Gold Encrusted #527 Rose brought \$69.99. An Amber No. 510 - Temple Jar (no lid), with GE Dancing Ladies (D185) decorate brought \$225. An outstanding rarity sold on April 14th. A pair of Ebony No. 636 - 9½" Candlesticks with GE Imperial Hunt Scene sold for \$709. I would have loved to have these in my meager collection.

Miscellaneous

A pink perfume with complete dauber sold on April 19th for \$56.25. A single Everglade #5 - 10" 2-piece Flower Holder sold on April 16th for \$247.50. Note; the candlestick was crystal and the epergne insert was Royal Blue. A No. 1 - Keg Set (Light Emerald) complete with Ebony tray and 6 tumblers sold on April 8th for \$78.78. A stunning Ivory 13" Draped Lady with early base sold on March 30th for \$1,495. A Topaz Buddha on an original metal base sold for \$225. And the grand finale, a rare green carnival treated 2666 - 32 oz. Decanter sold on April 6th for \$2,100.

Happy hunting!



Avocado bowl GE #527



12" Oval Bowl with E739



Ebony candlesticks GE Imperial Hunt Scene



Pink covered butter E520



No.1 Keg Set with tray



Elaine 2 part mayo with an interesting lid



#119 Rose Point basket



Green carnival treated 2666 32 oz. decanter



GE Dancing Ladies Temple Jar



Crystal Everglade candlestick with Royal Blue flower holder



The National Cambridge Collectors

P.O. Box 416 ~ Cambridge, Ohio 43725

January 31, 2010

Dear Friend of Cambridge,

Your Board of Directors is pleased to share with you the 2010 Annual Report of the National Cambridge Collectors, Inc. We continue to provide complete transparency to the membership regarding how your financial contributions are used to further the mission of NCC.

Unlike recent years, 2010 had no significant expenditures toward building maintenance or museum acquisitions. Furthermore, the support of many member volunteers permitted NCC to move a more-than-anticipated number of dollars to the NCC Endowment Fund. The Board of Directors is pleased to announce that \$50,000 was transferred to the Endowment Fund in 2010, bringing the total balance to \$150,000. This is truly a magnificent accomplishment and it could not have been done without the financial support of the Friends of Cambridge and the many member volunteers that provide the backbone of support for our truly amazing organization. Thank you Friends!

The cornerstone of NCC is the National Museum of Cambridge Glass. Throughout the months of November and December, the museum hosted a record number of visitors and bus tours through the museum. Personally, I had the opportunity to experience a "typical Saturday in November" at the museum, and I was amazed how organized and professional our museum staff functions. The members of the Museum Committee bring tremendous reasons for pride to our organization. Congratulations on an amazing year.

In order to better serve the Friends of Cambridge, the Board of Directors decided to initiate monthly conference calls. The success that NCC has enjoyed over the past several years does not "just happen". Many dedicated member volunteers make it happen. By conferencing more frequently, the Board of Directors should be better able to serve the needs and strengthen the operations of NCC. For 2011, the board's main goals are to increase membership and continue growth of the Endowment Fund.

We hope you enjoy reading the Annual Report, and we welcome the opportunity to answer any questions you may have. Once again, the Board of Directors thanks you for your continued financial support and extends best wishes to you in 2011.

With best regards,

David Ray
President



The National Cambridge Collectors

P.O. Box 416 ~ Cambridge, Ohio 43725

January 31, 2011

Dear Friends of Cambridge,

I underestimated the support for NCC in 2010. Before each new year gets going too far along, I complete a budget for the organization. The process actually starts in the last quarter of the previous year. The completed 2010 budget was designed to produce an increase in cash of \$9,587. But when the smoke cleared, from the events we ran, the fundraising we performed, the glass we collected, and in general the fun we had; we had an increase in cash of **\$37,338** for the year.

Normally I am not thrilled to miss a budget by that much. When I prepare the budget, I really expect our operations will produce the budgeted results. In 2010 I missed the budget by \$27,751. I have spent time wondering and analyzing how that happened. The first thing I always check is member support. Member support through gifts to the Annual Fund and special gifts are our most important means of financial support. I didn't have to look too far beyond the results of the 2010 Annual Fund to see why I missed the budget. The Friends of Cambridge made **\$51,054** in gifts to NCC through the Annual Fund in 2010. This is the most generous year ever. I figured with the economic uncertainties of the world, gifts to NCC would be less. I missed the boat, and budget, by \$11,054 which is the amount of Annual Fund giving in excess of the budget expectations.

Another reason for missing the budget was our continuing improvements in operational efficiency. The operation of the Crystal Ball was budgeted to cost \$20,000. Actual production and delivery cost of our greatly enhanced publication was \$15,000. This is another \$5,000 in positive cash for the budget. We seemed to do better than budgeted in most things.

The greatest mistake in financial plans requiring savings, is spending too much for current expenditures and not enough positioning for the future. We did the right thing in 2010. We transferred our excess operating cash to the endowment fund. The endowment now has \$150,000. This is certainly a respectable beginning for our long term goal of endowing the permanent operation of the museum. I know we still have a ways to go and can only hope we can continue with such an extraordinary success story. The Friends of Cambridge made it happen.

The next part of my message is always my favorite. As Treasurer I am compelled to communicate the business aspects of NCC. I do my best at it and hope you find my message useful. Our financial presentations are uniquely state of the art. Here's the best part – I have fun doing it. I am a collector of Cambridge Glass. My favorite line is "I never met a Cambridge Glass collection I didn't like". NCC does much more for me than I can ever do for NCC. It gives me Friends who share my passion for the art produced by the Cambridge Glass Company over fifty years ago. Enjoying art with others who appreciate it is much more fun than enjoying it alone. I have so many Friends to share with.

I take great pride in being the chief financial officer for NCC. We have accomplished so much together. My heartfelt thanks to all, especially our volunteers, benefactors, and everyone else who supports NCC. I hope Cambridge Glass and your Friends in NCC bring you as much fun and enthusiasm, as they do for me.

Sincerely,

Mike Strebler
Treasurer



Summary 2010

Cash Flow

	12/31/10	Budget	Variance
1. Membership	(21,810.12)	(28,300)	6,490
2. Development			
Fundraising	53,274.75	45,000	8,275
Events	15,208.44	13,500	1,708
Merchandise	14,115.40	8,000	6,115
	82,598.59	66,500	16,099
3. Education	1,564.83	1,250	315
4. Museum	(17,500.06)	(24,536)	7,036
5. Administration	(7,514.79)	(5,327)	(2,188)
Net increase (decrease)	37,338.45	9,587	27,751

Cash and Investments

	1/1/10	Current Yr. Change	12/31/10
Checking	35,298.23	(13,029.85)	22,268.38
Paypal	590.11	374.30	964.41
Imprest	50.00	150.00	200.00
Brokerage			
Unrestricted	4,346.02	(156.00)	4,190.02
Endowment	100,000.00	50,000.00	150,000.00
	140,284.36	37,338.45	177,622.81

Net Assets

	1/1/10	Current year change		12/31/10
		Cash Flows	Debt	
Unrestricted	32,767.63	(12,661.90)		20,105.73
Temporarily restricted	7,516.73	0.35		7,517.08
Endowment	100,000.00	50,000.00		150,000.00
	140,284.36	37,338.45		177,622.81

All Funds

	Actual		More (Less)	Budget	Variance
	12/31/10	12/31/09			
More cash than budgeted:					
Annual Fun REV	51,054.00	45,600.00	5,454	40,000	11,054
Museum cc EXP	(750.00)	(8,027.32)	7,277	(5,000)	4,250
Jewelry sal REV	6,841.00	10,014.75	(3,174)	3,500	3,341
Museum ac REV	8,333.00	6,069.50	2,264	5,000	3,333
Resale glas REV	6,588.20	5,847.29	741	4,000	2,588
CB Publish EXP	(10,449.39)	(12,540.07)	2,091	(13,000)	2,551
CB Delivery EXP	(4,484.73)	(7,396.73)	2,912	(7,000)	2,515
Museum m EXP	(3,359.40)	(2,480.14)	(879)	(5,200)	1,841
Glass Show REV	5,338.98	3,353.35	1,986	3,500	1,839
General m EXP	(4,941.37)	(8,448.99)	3,508	(6,500)	1,559
Publication REV	3,868.36	3,478.27	390	2,400	1,468
					<u>36,339</u>
Less cash than budgeted:					
Gifts REV	1,295.75	16,031.00	(14,735)	4,500	(3,204)
Cost of boc EXP	(2,402.42)	(650.42)	(1,752)	(500)	(1,902)
Museum st EXP	(12,105.86)	(11,474.37)	(631)	(10,800)	(1,306)
					<u>(6,413)</u>

Detailed above 29,926
All other non-detailed (2,175)
Activity for year 27,751



The National Cambridge Collectors

P.O. Box 416 ~ Cambridge, Ohio 43725

January 1, 2011

Dear Friends:

The Board of Directors is responsible for making an action plan of what activities NCC will undertake during an upcoming calendar year. In order to come up with that plan, we discuss what's working, what isn't, what would we like to do new, what do we want to quit, but most of all – what can we do to make NCC a better organization. Once we have an action plan, we convert it to dollars. The monetized action plan is the budget.

The budget for 2010 was a refreshing break for the Treasurer. We had no major financial goals other than to maintain and operate our organization in an efficient fashion with an eye to the future. Financially, 2010 was a successful year. We finished with a positive cash flow of \$37,338 and moved \$50,000 of unrestricted funds into the endowment, bringing the endowment to \$150,000. I think we also made headway in analyzing our operations.

Operational efficiency is also our goal for 2011. I am optimistic a long contemplated management restructuring will take place in 2011. The restructuring is designed to get more individuals involved and provide clear lines of communication and responsibilities. Hopefully this will lead to new ideas and sources of revenue which should strengthen our long-term prospects. I continue to hope we can figure out how to use our museum gift shop for greater financial assistance.

The annual fund is always our biggest sensitivity in budgeting since it is the single largest source of support for NCC. Last year I under-budgeted member generosity through the annual fund. Actually, I was too conservative in a few revenue areas. All areas seemed to hold in 2010 so that I have assumed similar revenue stability in the 2011 budget.

On the expenditure side, the 2011 budget includes our base amount for museum maintenance and improvements of \$5,000. We have included an additional \$5,000 for storage improvements and space conditioning units. The museum contents is a very modest \$1,000.

If the revenue holds, and we stick to our expenditure plans, the results from the operation of the 2011 budget will produce \$20,000 in additional cash. If that happens, I will in all likelihood propose we transfer another \$25,000 to the endowment fund at year end.

NCC as an organization has always been striving to get to a higher level. We started in the early 1970's as a local group of individuals who banded together to appreciate their common interest in collecting Cambridge Glass. From those discussions came the formation of NCC and the publication of the first Crystal Ball in 1973. In 1982 the first museum opened. In 2002 the South 9th Street museum opened. In 2006 we purchased the last remaining large group of molds. No more debt in 2008 and the endowment reached \$100,000 in 2009, and then \$150,000 in 2010. All of which brings us to the 2011 Budget. I am excited we have the opportunity to carry NCC into the future through planning. Our plans will bring long-term financial stability to NCC, improve our operational efficiency, and make better Friends of all of us.

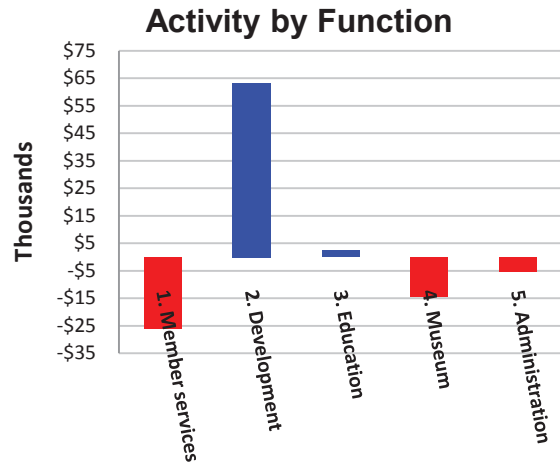
Sincerely,

Mike Strebler, Treasurer



**Budget
2011
Summary**

I. Statement of Activity		Budget 2011
1. Membership		(25,800)
2. Development		
Fundraising		49,300
Events		14,000
		<hr/> 63,300
3. Education		2,450
4. Museum		(14,526)
5. Administration		(5,424)
Increase (decrease)		20,000



II. Cash and Investments	12/31/11	Current Yr.	
		Change	1/1/11
Checking	41,332	19,064	22,268.38
Paypal	100	(864)	964.41
Imprest	50	(150)	200.00
Brokerage			
Unrestricted	4,390	200	4,190.02
Endowment	151,750	1,750	150,000.00
	197,622	20,000	177,622.81

III. Debt	12/31/11	Current year change		1/1/11
		Payments	Draws	
PNC Bank	0.00	0	0	0
				0

IV. Net Assets	1/1/11	Current year change		1/1/11
		Cash Flows	Debt	
Unrestricted	38,455	18,350		20,105.73
Temporarily restricted	7,417	(100)		7,517.08
Endowment	151,750	1,750		150,000.00
	197,622	20,000		177,622.81
Debt	0		0	0.00
	197,622	20,000	0	177,622.81

20,000



Budget Variances

2011 Budget

	Budget 2011	Cash More (less)	2010		
			Budget	More (Less)	12/31/10
More cash than prior year budget					
Annual Fund	46,500	6,500	40,000	11,054	51,054.00
Museum contents	(1,000)	4,000	(5,000)	4,250	(750.00)
Crystal Ball operations	(16,150)	3,250	(19,400)	4,792	(14,608.12)
Resale Glass	6,000	2,000	4,000	2,443	6,443.07
Public operations	(4,013)	1,788	(5,800)	2,027	(3,772.86)
Publications	3,100	1,200	1,900	(388)	1,512.44
Glass Show	4,500	1,000	3,500	1,839	5,338.98
	38,938	19,738	19,200	26,018	45,217.51

	Budget 2011	Cash More (less)	2010		
			Budget	More (Less)	12/31/10
Less cash than prior year budget					
Museum maintenance & impr.	(10,200)	(5,000)	(5,200)		(3,359.40)
Special Gifts	2,500	(2,000)	4,500	(3,204)	1,295.75
Utilities	(8,515)	(1,290)	(7,225)		(7,848.97)
	(16,215)	(8,290)	(7,925)	(3,204)	(9,912.62)

Net budget decrease detailed above	11,447
Unscheduled above	<u>(1,287)</u>
2011 increase from 2010 budget	<u>10,161</u>



FOR SALE: CAMBRIDGE GLASS COLLECTION

(Estate of Richard Even)

Located in New Milford, CT.
Available in August by appointment

Eight cabinets containing
approximately 3,000

items to be sold by Lot

Many pieces including:

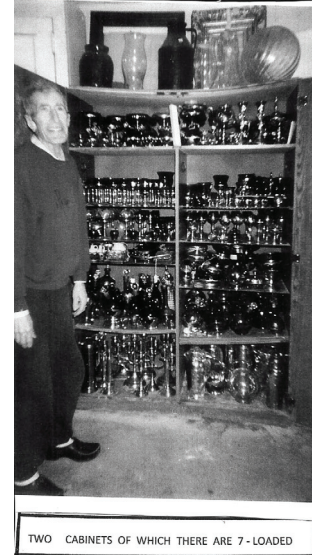
Caprice, Marjorie, Rose Point,
Farber, Chantilly, Tally-Ho, Carmen,
Milkglass, Crystal, Royal Blue.

Too many items to list

Contact: John McLain

Home: 860-355-9019

Cell: 860-946-9766



TWO CABINETS OF WHICH THERE ARE 7 - LOADED

12TH ANNUAL ELEGANT AND DEPRESSION GLASS SHOW AND SALE JULY 16 & 17, 2011

TENNESSEE STATE FAIRGROUNDS
WEDGEWOOD EXIT OFF I-65
NASHVILLE, TENNESSEE

*FEATURING
ELEGANT & DEPRESSION GLASS
EARLY AMERICAN PATTERN GLASS
AND MUCH MORE*

SATURDAY HOURS - 10 AM TO 5 PM
with Guest Speakers at 1 PM & 3 PM

SUNDAY HOURS - 11 AM TO 3 PM
with Guest Speaker at 1 PM

ADMISSION \$5.00 – GOOD FOR BOTH DAYS
FREE PARKING

HOSTED BY FOSTORIA GLASS SOCIETY OF TENNESSEE
BOB FULLER, SHOW MANAGER
615-223-0816 OR FULLERRE@COMCAST.NET

WANTED

Glass Dash Participants

There are several spaces available for glass enthusiasts to set up at the 2011 Glass Dash which will be held Saturday morning, June 25, at St. Benedict's Gym (same location as last year). This is an exciting event held during the Convention. Dealers are welcome, but really this is a perfect venue for those who need or want to reduce their collections. As expected, Cambridge glass sells best, but other items are also sold during this event. Just make sure that the other glass items are clearly marked. If you are interested in joining the fun, please contact Larry or Susan Everett by email at heartlamps@sbcglobal.net or give them a call at (937)675-6491.

LOOKING GLASS PRODUCTIONS

FEATURING: Depression Glass, China, Pottery & Vintage Collectibles

Show Schedule

Jan 22-23, 2011
Cartersville, GA

Feb 12-13, 2011
San Antonio, TX

Mar 12-13, 2011
Grapevine, TX

Aug 6-7, 2011
Pensacola, FL

Aug 13-14, 2011
Slidell, LA

Aug 27-28, 2011
Grapevine, TX

For information: Fred or Pam Meyer (972) 672-6213
meyerlookingglass@hotmail.com
www.meyershows.com

NCC Events

2011 Convention

June 22-26, 2011

August Quarterly Meeting
Saturday, August 20, 2011

Glass Shows

June 10, 11, 12, 2011

Fostoria Glass Society of America

31st Annual F.G.S.A. Convention, Elegant Glass Show and Sale
NEW LOCATION THIS YEAR

Visit web site for details: www.fostoriaglass.org

June 11 - 12, 2011

28th Annual Bellville Antique American Glass & Pottery
Show & Sale

Belle-Clair County Fairgrounds, Bellville, Illinois

More Info: www.midwestglassandpottery.com

June 15 - 18, 2011

Heisey Collectors of America

39th Annual Convention, Show and Sale

Newark, Ohio

More Info: www.heiseymuseum.org

June 25 - 26, 2011

Tiffin Glass Collectors Club Show & Sale

Tiffin, Ohio

More Info: www.tiffinglass.org

July 9 - 10, 2011

National Depression Glass Assoc. Show & Sale

San Antonio, Texas

More Info: www.NDGA.net

Email: Convention@NDGA.net

July 16 - 17, 2011

12th Annual Elegant & DG Show

Nashville, TN

Call: 615-223-0816

More Info: FULLERRE@COMCAST.NET

July 23 - 24, 2011

Peach State DG Show & Sale

Cobb County Civic Center

Marietta, GA

Call: 770-853-5327

More Info: www.psdgc.com

August 19-21, 2011

Houston Festival of Glass & Antique Show & Sale

Rosenberg, TX

More Info: www.houstonglassclub.org

September 30 - October 1, 2011

Heart of America DG & Pottery Show

Independence, MO

Call: 816-308-7495

Email: hoagc@juno.com

More Info: www.hoagc.org

If you know about any upcoming glass shows or other glass events, please pass the word on to us at least six to eight weeks before the show dates. These listings are free of charge.

DEALER DIRECTORY

Glen & Carolyn Robinson
White Rose Antiques
Specializing in Depression Era Glassware

2454 McFarland Road
York, SC 29745

803-684-5685
gandcrobinson@aol.com
whiteroseglassware.com

Joanne & Janine Bender
Specializing in Depression Era Glassware
We Buy & Sell

PO Box 1007
Pebble Beach, CA 93953

831-647-9957 jjdbender@aol.com
831-647-9949 www.benderglass.com

J & L Treasures
Specializing in Depression Glass
Heisey, Cambridge, Fostoria, Morgantown,
Tiffin, etc.

Linda Kilburn
PO Box 1257
Burlington, CT 06013

860-673-4088 (Answering machine - leave message)

Ohio Valley Antique Mall
7285 Dixie Highway (Route 4)
Fairfield, OH 45014
Cincinnati's Largest Multi-Dealer Antique Mall
Hours: DAILY 9:00 a.m. - 9:00 p.m.

513-874-7855
www.ohiovalleyantiquemall.com
cfaxon@ohiovalleyantiques.com

DEALER DIRECTORY

Dealer Directory - \$24 for 12-months, size limited by box (see below). Includes listing on NCC website.

Advertising Rates:

1/8 page \$15 1/4 page \$20
1/2 page \$30 Full page \$50
(plus \$5 per photograph)

Electronic submissions should be emailed to:

ncccrystalball@charter.net

Use Word. Mailed submissions and all payments should go to PO Box 416, Cambridge, OH 43725. Deadline is 10th of preceding month. Ads must be paid in advance. Show listings are FREE; send info to PO Box or e-mail address 60 days before event.

Classified Ads - Reach over 1,000 avid collectors of Cambridge Glass

VIRTUALATTIC AT THE GLASS CHALET

SPECIALIZING IN ELEGANT DEPRESSION ERA GLASS

Sandra L. Bridwell-Walker PO Box 3448
William P. Walker Cleburne TX 76033-3448
Phone: 817-202-0940 www.virtualattic.com
Sandy's Cell: 817-559-0328 virtualattic@sbcglobal.net
theglasschalet@sbcglobal.net
Bill's Cell: 817-357-7084

Daugherty's Antiques Jerry and Shirley Antiques & Collectibles-Mostly Glass

www.daughertys-antiques.com
email: sdaugh2515@daughertys-antiques.com

Shows & Mail Orders 2515 Cheshire North
402-423-7426 (evenings) Lincoln, NE 68512

THE GLASS HOUSE ANTIQUE MALL Furniture, Pottery, Glass Antiques and Collectibles I-70 Exit 146, East on SR 40

8825 E. Pike 8825 Cheshire North
Norwich OH 43767 TEL 740-872-3799

Milbra's Crystal Buy & Sell

Replacement and Matching
Milbra Long (817) 645-6066
Emily Seate (817) 294-9837
PO Box 784
Cleburne TX 76033

*Specializing in
Cambridge
Fostoria, Heisey
and others*

E-mail: longseat@sbcglobal.net
www.fostoriacrystal.com

ISAACS ANTIQUES (740) 826-4015

See our booths in Penny Court Mall in Cambridge and at White Pillars Antique Mall (Route 40, one mile west of I-70 Norwich, OH • Exit #164)

The American Bell Association International, Inc.

7210 Bellbrook Drive
San Antonio, TX 78227-1002
www.americanbell.org



MARGARET LANE ANTIQUES

2 E. Main St. New Concord, OH 43762
Lynn Welker (740) 826-7414

Cambridge Glass Matching Service
Hours: Mon-Fri 10-12 AM, 1-5 PM
or by appointment

Our House Antiques



Linda and David Adams
Las Vegas, NV
1-800-357-7169

www.OurHouseAntiques.com
email: David@OurHouseAntiques.com

ALADDIN LAMP BOOKS

Kerosene Lamps 1884-1940
New book 2007

Bill & Treva Courter
brtknight@aol.com

3935 Kelley Rd. Phone 270-488-2116
Kevil, KY 42053 FAX 270-488-2119

Max Miller

Elegant Glassware • Books • Fiesta
...and more

THE MARKET PLACE

(713) 467-0450 - BUS 10910 OLD KATY RD.
(713) 461-1708 - RES HOUSTON TX 77043
MMXGLASS@aol.com

Cheshire Cat Antiques

Specializing in elegant depression to mid-century era glass and vintage kitchen glass.

Pull up a Mouse!
Shop 24 hrs a day at
cheshirecatantiques.com



Francee Boches > 305-884-0335
fboches@cheshirecatantiques.com

BAKER FAMILY MUSEUM

805 CUMBERLAND ST.
CALDWELL, OHIO 43724
740-732-6410

bakermuseumnellbaker@msn.com

Wed & Thurs 9-4; Fri - Sat 9-5

CRYSTAL LADY

1817 Vinton St. Omaha, NE 68108
Bill, Joann and Marcie Hagerty
Shop 402-341-0643 Home 402-391-6730

Specializing in Elegant Glass & Collectibles
www.crystalladyantiques.com



Mother Drucker's Penny Drucker

Specializing in Elegant Glassware
Shows & Mail Order

PO Box 18087 (775) 851-7539
Reno, NV 89511 (888) MDRUCKER
www.motherdruckers.com

CRYSTALLINE COLORS

Cambridge • Fostoria • Elegant Glass
Penny Court Mall, Cambridge - 2 booths
Riverfront Antique Mall
New Philadelphia, OH (I-77, exit 81)
Booth #'s 626 and 616

Lynne R. Franks 216-661-7382

GLASS FROM THE PAST

Maureen Gillis



www.glassfromthepast1.com
email: glassfromthepast1@comcast.net

Cherished Collectibles

Shopping 24 hours in our online store
Glassware, Figurines, Collectors' Plates

www.cherishedcollectibles.com
Elegant and Depression Era Glass

TWEAK COLLECTIBLES

Specializing in Elegant Glass
BUY & SELL
WANTED: CAMBRIDGE TURKEYS
417-742-3653
btummons@aol.com

National Cambridge Collectors, Inc.
PO Box 416
Cambridge OH 43725

website: www.cambridgeglass.org
e-mail: ncccrystalball@charter.net

Friends of Cambridge – Annual Fund

NCC exists through member giving using an Annual Fund system to raise operating funds and to ensure the preservation of Cambridge glass for future enthusiasts. The Annual Fund uses a common member "renewal" date and NCC sends out Annual Fund materials to everyone once a year during March/April. There are no monthly reminders or monthly renewal dates. The Annual Fund is NCC's primary means of support and all Annual Fund gift recognition levels are per household and include membership for all adults within the household. Additionally, each household will receive a subscription to the Crystal Ball newsletter, unlimited admissions to the museum, and rights to vote in elections for the Board of Directors. Multiple households at the same address are welcomed. NCC is a 501C(3) organization and Annual Fund gifts are allowed as a tax deduction under Section 170 of the Internal Revenue Code.

Levels of Membership

Patron	\$35
Benefactor - Century	\$100
Benefactor - Mardi Gras	\$200
Benefactor - Japonica	\$500
President's Circle	\$1,000

President's Circle includes Convention registration for two members in the household and one copy of any new NCC publications.

National Museum of Cambridge Glass Open April thru October only

Located at 136 S. 9th Street in
downtown Cambridge, Ohio
Wed-Sat 9 a.m. - 4 p.m.
Sunday Noon - 4 p.m.
General Admission \$4
Seniors & AAA members \$3
NCC Members and children under 12
FREE

