



Cambridge Crystal Ball

Published by the National Cambridge Collectors, Inc. as a resource which informs, invites and inspires the continued preservation of the glass produced by the Cambridge Glass Company of Cambridge, Ohio for future generations.

Issue No. 446

March 2011

January Activity at the Museum

By Cindy Arent

NCC is very fortunate to have supportive members, willing to not only support the museum from afar, but also step right in and work. This January we were a few weeks late beginning the annual cleaning process due to two motor coach groups on the 6th and the museum was also a site for two clues during the Cambridge Capers Mystery Experience on the 8th.

As soon as the last visitors left on January 8th, museum volunteers immediately began packing 2010 displays and setting up for the cleaning of the 66 showcases and other maintenance projects. During the month, members could be found working at the museum almost every day. And even better, on several days as we were working, visitors arrived at the door to see the museum. If we could, we let them in so they could see the beautiful glassware that was produced by The Cambridge Glass Company. Three people were from Thousand Oaks, California and were delighted that they were able to experience the museum. On the same day, a group tour operator arrived unannounced to gather information for a group she will be bringing this summer. Even when we are closed, we are always open to spread the word.

When volunteers arrived for the January 29th “mega” cleaning day, 25 cases had already been cleaned. Work tables had been set up around the museum to take full advantage of the extra hands and members could begin promptly at 9 am. What a great team we had! By the end of the day only 9 showcases were left to be cleaned, quite an amazing accomplishment!

February promises to be another busy month. In addition to the showcases left to clean, other maintenance items need to be done. The tile floor in the museum Edna McManus Shepard Education Center needs to be stripped and waxed. This is no easy task because all of the exhibits need to

be removed from the room. Also, much needed storage cabinets will be installed in the women’s restroom area. More information on these projects will follow in the next issue of the Crystal Ball.

We look forward to Ralph and Linda Warne arriving on February, 12 with their collection of Cambridge ice buckets for display in the Member’s Room. Alex Citron and Shelley Cole will move their collection of keyhole pieces into the Sample Room the following weekend. It’s an exciting time at the museum as we prepare for the 2011 season. Thank you all for your support!



These volunteers gathered for a “mega” museum cleaning session on January 29th. L-R Row 1; Sue Cowden, David Rankin, Vicki Wollenhaupt and Sharon Miller. Row 2; Susan Everett, Rich Bennett, and Frank and Dawson Wollenhaupt. Row 3; Paul Hixson, Betty Sivard, Joe Miller and Carl Beynon. Row 4; Dorothy and Squeek Rieker, Jack Thompson and Larry Everett. Elaine Thompson and Cindy Arent were absent from the photo.



PRESIDENT'S MESSAGE

We Need You!

As the mailing for the annual fund quickly approaches, I want to take this opportunity outline the importance of your participation. In 2010, 539 households participated in the annual fund, which resulted in a gross of nearly \$50,000. The following breakdown shows the participation levels for the 2010 annual fund.

- President's Circle (\$1,000) – 10
- Japonica (\$500) – 8
- Mardi Gras (\$250) – 37
- Century (\$100) - 128
- Patrons (\$35) – 356

Why is your participation in the 2011 annual fund so important? From the annual fund, NCC operates and maintains a first class museum, acquires glass and non-glass items for the museum collection, produces and distributes the Crystal Ball, supports the Endowment Fund, generates publicity for NCC related events, as well as other member benefits. Although NCC receives funding from other sources, the annual fund is the largest contributor to the financial security of NCC each year. Therefore, the success of the annual fund is critical for the future of NCC. Each of the past couple of years, \$25,000 has been transferred to the Endowment Fund as a result of the annual fund's success. However, at that rate, more than 20 years will be needed for the endowment fund to reach a sufficient level.

Some members have asked why NCC needs an endowment fund. This is a logical question that needs to be answered. Over the past several years, NCC's membership has declined significantly. At one point we had well over 1,000 individual members. In 2010, 539 households participated in the annual fund. This converts to approximately 750 members. In 2010 alone, we did not hear from 59 households who participated in the 2009 annual fund. Fortunately, this loss was offset by 48 new memberships. In comparison to previous years, the net loss of 11 households was very minor. No one is able to predict the future of NCC, but the Board of Directors feels it is critically important to secure the future of the National Museum of Cambridge Glass by having an endowment fund that will provide sufficient funds to allow the museum to operate at its present level into the future. Every member's dream is that NCC will remain a vibrant organization. We hope to increase NCC's membership with the help of our new

Member Relations Chair, Julie Buffenbarger. Nonetheless, NCC needs to protect the operation of our museum regardless the number of members of NCC in the future. Please carefully consider your level of participation in the 2011 annual fund. You are the future of NCC. Remember, contributions to the annual fund are tax deductible.

NCC's annual Benefit auction will be held on Saturday, March 5. Jack and Elaine Thompson, Lynn Welker, David Rankin, Helen Klemko, David Adams, Frank Wollenhaupt, and numerous volunteers have worked very hard to promote and organize this year's auction. Several rare and unusual pieces of Cambridge glass have been consigned, so please plan to attend or be an absentee bidder. Many photographs of this year's consignments have been placed on NCC's website. Thank you to the members of the Auction Committee and the 44 people who consigned glassware for this year's Benefit Auction.

Hopefully, I'll see you at the auction!

David

David Ray
westervillesh@hotmail.com

SCHEDULE OF EVENTS FOR AUCTION WEEKEND MARCH 4 - 5, 2011

Friday, March 4, 2011, Pritchard-Laughlin Center

6:30 – Open to view 2011 Auction glass
7:30 – 8:00 – March Quarterly Meeting
8:00 – 9:00 – 2011 Auction Preview by Lynn Welker,
plus Show 'n Tell

Saturday, March 5, 2011, Pritchard-Laughlin Center

9:00 - Open to view 2011 Auction glass
10:00 – 2011 NCC Benefit Auction

Museum hours over the Auction Weekend

Friday - March 4: 10:00 – 4:00
Saturday - March 5: Noon – 4:00

Museum – On the Road in January

By Cindy Arent

Again this year Debbie Robinson, Executive Director of the Cambridge/Guernsey County Visitors & Convention Bureau, invited us to participate in the AAA Great Vacations Expo in Columbus, Ohio January 21 - 23. In addition to the National Museum of Cambridge Glass, other area tourism partners participating were The Living Word, Byesville Scenic Railroad, Deerassic Education Center, Cambridge Farmer's Market, Hopalong Cassidy Museum/Convention and the Eastern Ohio Art Guild. Each attraction worked four hour shifts in the Cambridge/Guernsey County booth at the Expo.

Sharon Miller and I worked the Saturday afternoon shift and had a wonderful time engaging people as they passed by the booth. Cambridge etching plates were on display and children were drawn to the table to do a rubbing. Every hour during the three day travel expo, a drawing was held and show attendees had to return to the booth in order to win. NCC provided free admission tickets to the museum and glass show & sale. Last year we had several of the winners visit the museum, as well as the glass show & sale. Special thanks to the VCB for offering this opportunity to promote the museum and Cambridge/Guernsey County!

This month the Visitors & Convention Bureau also offered NCC a free enhanced listing in the March issue of Ohio Magazine for the 2011 March auction. Jack Thompson sent auction information and photos from the 2010 auction. Ohio Magazine will choose the listing photo from the selection. Again, thank you to the VCB!

Another promotional opportunity has been offered by the Cambridge Area Chamber of Commerce Women's Alliance. A free public "trade show" event showcasing local service organizations, non-profits and civic organizations will take place on February 17 at the Cambridge Park Armory. Sally Slattery will be setting up the NCC table. This event will offer us the opportunity to inform the community about our organization and possibly recruit future members and museum volunteers.

Sharon Miller will be on the road February 18–20 when she travels to the Heartland Travel Showcase in Detroit, Michigan promoting the museum and glass show & sale. This year we will share a booth with Dickens Victorian Village. Sharon will write about her Heartland experience in the April Crystal Ball.

During January each year, the Ohio Department of Transportation sends a distribution report to inform attractions of the number of rack cards needed to stock the State of Ohio Travel & Information Centers along the interstate highway system. They requested 2,000 cards. Since it is quite expensive to ship, NCC member Sharon Bachna volunteered to deliver the heavy box to ODOT in Columbus. Thank you Sharon!

The Cambridge/Guernsey County Visitors & Convention Bureau has accepted a digital media design internship this semester from Muskingum University. The intern will be creating 3-5 minute videos on area attractions to be featured on www.visitguernseycounty.com via YouTube. After several strategic meetings, a list of attractions to be featured was established and the National Museum of Cambridge Glass was chosen as one of the area's best attractions. More information on this project will follow.

We hope to see you in Cambridge in the near future!



Thousands of visitors attended the third annual three-day show and hundreds stopped by the Cambridge/Guernsey County booth to pick up the Official 2011 Vacation Guide, sign up for giveaways, and to learn more about vacation destinations in our area. Many Guernsey County residents also attended the show. Working the booth in costume and representing their attractions are Cookie Connell, I, from the Guernsey County Farmers Market; Sharon Miller from the National Museum of Cambridge Glass; and Cindy Arent, r, from the National Museum of Cambridge Glass.



Children enjoyed coming into the booth to do rubbings from Cambridge etching plates. The dragon plate is always popular with the younger crowd.



People enjoyed returning to the Cambridge/Guernsey County booth for the hourly drawings. Some even returned several times during the day for the chance to win free admission tickets to area attractions.

What the Annual Fund means to me

By Larry Everett

I like to collect. I collect a lot of things. Some think I have a disease. But collecting makes me happy. There are things that make me even happier however. One of those is sharing with other collectors the knowledge, the finds, and the stories of the ones that got away. But perhaps, one of the greatest joys is walking through the doors into our museum. Susan and I have visited the museum more than a dozen times last year alone. Yet every time we come in, even if only for a few minutes, we see something new. Every time we are greeted as a friend and welcomed as a member of the Cambridge glass family. You just cannot put a price on this wonderful feeling, so we must ensure that this museum, which is filled with such great memories, lives on forever.

Last weekend we “volunteered” to help clean glass in the museum display cases. This annual gala event is managed by Warden Cindy Arent. We were assigned the Near Cut cases. It’s pretty amazing to find that some of the pieces, even with ten years of cleaning, still have evidence of “flood mud”. This made me think about how “lucky” we were as an organization to have had the flood occur at our former site and how much sweat, blood and tears it took to get us where we are today. We are so fortunate to be part of the Cambridge downtown activities, and especially part of the Dickens Village tours.

I had believed that the museum would only attract those interested in Cambridge glass, but boy was I wrong! Of the hundreds of visitors only a handful was even aware that there was such a thing as Cambridge glass. When the tour was completed, I did not hear one negative word about their experience. We were thanked profusely for sharing our passion and they had a new appreciation for handmade glassware. It’s because of your and my contribution to the annual fund that any of these great things can happen. Gifts to our organization take many forms - yes there is money, but there is also the gift of time, talent, and so much more. Please also consider joining the Heritage Society as we all work together to build a fund that will carry us in perpetuity.

Thanks for listening,

By-Laws Amendment Proposal

In the event of a tie vote, if one of the nominees is the incumbent, then the incumbent nominee prevails. If neither of the nominees is the incumbent and a tie vote ensues, the board members will take a 10 minute recess to reflect and then vote again. If this second vote still results in a tie, then a decision will be reached by either a coin toss or drawing a name out of a hat.

(Editor: This proposed amendment to be voted on at the June 2011 Annual Meeting.)



February 5th we had a small, but energetic group of volunteers cleaning at the museum. This crew shows Sharon Miller and Max and Karen Treier hard at work. Other volunteers throughout the day were Carl Beynon, Rich Bennett, Betty Sivard and Cindy Arent. All of the showcases are now cleaned except for the auditorium and gift shop cases. Three cheers for the NCC volunteers!

In Memoriam **Morris (Morry) Oldham**

Longtime NCC member Morry Oldham passed away on February 1, 2011 at the age of 98 in Annapolis, MD. Born July 14, 1912, in Cambridge, Ohio, he was the oldest of four children. The Oldhams were among the first settlers in Guernsey County, Ohio, arriving in 1803.

Morry was a graduate of The College of Wooster (BA in Chemistry) and University of Michigan (Master of Science). He was an instructor of chemistry at Wooster, the Phillips Exeter Academy and, for 28 years, at the United States Naval Academy. He was a member of the American Chemical Society and the New England Association of Chemistry Teachers and published several research articles.

He and his college sweetheart, Portia Wylie, married in 1939 and together collected Cambridge Glass. Portia predeceased him in 1988 after 49 years of marriage. His second wife, Dorothy Gilley, also shared his passion for Cambridge. She passed away in 1997.

In 2010, Morry donated his cherished glass collection to the National Museum of Cambridge Glass. NCC greatly appreciates his gift and how it will help benefit collectors for years to come. We extend our condolences to his three children and 4 grandchildren.

"UNDER THE SEA"

National Cambridge Collectors, Inc.

38th Annual Convention

Wednesday, June 22 through

Sunday, June 26, 2011

Treasures from the Sea Auction

In the past, a cracked vase with fake flowers would fetch a fabulous price at the after dinner auction on Friday evening. Those times have changed. We are all watching our pennies and our ideas of what has "intrinsic value" in auction items has evolved as well.

The Treasures of the Sea Auction held at the end of the Captain's Feast promises to feature some unique "experience items" in lieu of traditional Cambridge glass.

Some of the featured experiences include:

"A Night at the Museum"

"A Private Tour of the Museum and Dinner with Lynn Welker"

"Dump Diving with Rich Bennett"

Local Hotel and Restaurant Gift Certificates

Special Cambridge Jewelry

In closing, we hope that you will enjoy the "unique" offerings available at the Treasures from the Sea Auction. If you have set aside some Cambridge Glass for this year's auction, we encourage you to donate the items to the Museum for sale in the gift shop. We also welcome any "unique experience" donation ideas. Please send your ideas to us at:

jefinley@charter.net and/or
Julie.buffenbarger@gmail.com.

Heritage Society

Are you at a loss for words? Do you have a collection of Cambridge glass that you enjoy, but would like to make arrangements to Will it to NCC and don't know how to go about having your wishes carried out? I know how difficult it is at times to say exactly the "right" thing. Thanks to a joint effort with Steve and Helen Klemko we have some suggested wording for inclusion in a Will for anyone considering joining the Heritage Society. We encourage you to consult with an attorney to ensure that your wishes are conveyed correctly. The EIN number in the paragraph below is the NCC's identification as a tax exempt non-profit organization.

The following wording was checked by an attorney, but you should still seek legal counsel in your state:

"I will devise and bequeath my entire collection of Cambridge Glass, located at my residence, to the National Cambridge Collectors, Inc., Cambridge, Ohio (EIN 23-7366120) for display at the National Museum of Cambridge Glass located in Cambridge, Ohio. The National Cambridge Collectors, Inc. may sell any part of the collection for the benefit of the organization. My Personal Representative/Executor must contact the Museum Director at (704)432-4245, to obtain specific instructions regarding identification, packing, and transferring of this collection. Any costs associated with packing and shipping to be paid from the estate upon receipt of vendor invoices."

This is only one example of a gift to the NCC. Other possibilities include monetary donations, stocks and bonds, or other items of value. If you have questions or would like to discuss being a member in the Heritage Society please contact me: Larry Everett heartlamps@sbcglobal.net, or at my work phone (937) 328-3860.

ASSISTANT REGIONAL CRYSTAL BALL EDITORS

Would you like to be part of the Crystal Ball production?

Your Editor is looking for several Assistant Editors to help with items for the Crystal Ball. You would have the opportunity to interact and work with the membership to obtain articles and photos for upcoming issues of our wonderful publication. We are looking for interested members, with friends among the membership to work with them suggesting topics of interest, helping with the writing (if needed) of the articles and forwarding them to the Editor for review. Your assistance and suggestions will be vital to the continued growth of NCC. If you are interested, please drop an email to the Editor at ncccrystalball@charter.net.

“UNDER THE SEA”

PROPOSED Maritime schedule

WEDNESDAY, JUNE 22, 2011

2:00 PM	Registration Opens	National Museum of Cambridge Glass
6:00 PM	Second Dog Watch Picnic	National Museum of Cambridge Glass

THURSDAY, JUNE 23, 2011

9:00 AM	Convention Registration Opens “Coffee with Cambridge”	National Museum of Cambridge Glass
10:00 AM	First Time Conventioneers & Mentors and Friends Programs Visit the Display Rooms at the Museum and interact with collectors who have assembled the displays for 2011.	
11:00 AM	Cambridge 101: Learn the Basics to Cambridge Glass Identification	
12:00 PM	TREASURE CHEST SEARCH: Set sail to one of the many local glass dealers on the “treasure chest card” or enjoy some free time shopping or visiting local attractions. (More information is forthcoming on the Treasure Chest Search.)	
4:00 PM	Museum and Registration Closes	

FRIDAY, JUNE 24, 2011

8:00 AM	Registration Opens Pick up numbers for Glass Show Entry	Pritchard Laughlin, Galleria
10:00 AM	Drop off “Under the Sea” Themed Displays and begin Pirate’s Treasure Raffle	
12:55 PM	Announcement of Pirate’s Treasure Raffle Winner	
1:00 PM	Opening of the Show and Sale	Pritchard Laughlin Exhibit Hall
5:00 PM	Closing of Show and Sale	
5:30 PM	Neptune’s Cocktail Reception	Pritchard Laughlin Galleria
6:00 PM	Captain’s Feast Recognition of Volunteers & Awards Presentations Treasures from the Sea Auction	Pritchard Laughlin Galleria
8:00 PM	Bring your “Bounty and Brag” & Glass Identification	

SATURDAY, JUNE 25, 2011

7:00 AM	Glass Dash, Early Bird Admission	St. Benedict’s Gymnasium
8:30 AM	Glass Dash, General Admission	St. Benedict’s Gymnasium
11:00 AM	Close of Glass Dash	
11:00 AM	Opening of Show and Sale Mermaid’s Madness Silent Auction	Pritchard Laughlin Exhibit Hall
12:30 PM	Lunch and Learn “Sea Shell Line”	Pritchard Laughlin Conference Room
4:00 PM	Closing of Show and Sale End of Mermaid Madness Silent Auction	
5:30 PM	Salty Dog Cocktail Reception	Pritchard Laughlin Galleria
6:30 PM	Sea Shore Supper	Pritchard Laughlin Galleria
8:00 PM	Announcement of Mermaid Madness Silent Auction & Treasure Chest Winners Annual Crew Meeting	Pritchard Laughlin Galleria

SUNDAY, JUNE 26

8:00 AM	Cambridge Glass Worker Reunion NCC Board of Directors Meeting	To Be Announced To Be Announced
----------------	--	--

ONLY QUESTIONS - NO ANSWERS

By Frank Wollenhaupt (fewvic303@sbcglobal.net)

I don't know about you but I am ready for Spring. This has been one long winter. With all the snow and ice storms around, we find ourselves staying in and cooking more. I love soups so I have been spending a lot of time making them.....nothing goes better in a cold winter day than a great bowl of homemade soup.

My wife (Vicki) is also spending some time at the stove. Not making soup but baking. This week she made some great orange cookies. These are so soft and delicious. If you want the recipe, send me an email and I will send it to you.

With all the baking going on, it got me thinking about the kitchen items that Cambridge made. I know most of you go in for the flashy side of Cambridge but believe it or not, they didn't start out that way.

In the beginning they made items for the Laboratory, Physicians, Druggists and Watchmakers also bar goods and tableware.

In making the orange cookies, it requires juice from two oranges. So what does Vicki do? She pulls out the 1909 patented juice extractor. What makes this interesting are the little dams around the juice well to stop the seeds from going with the juice when you pour it. Another nice thing is that it comes in three sizes. The #2674 Lemon juicer (this is the one shown in the patent), the #2761 Orange juicer (see photo below) and the #2698 also a Lemon juicer but smaller with a tab handle.



After she had all the orange juice she needed, she then took out the Cambridge Measuring Cup. Yes, that is the name "Cambridge" measuring cup, not to be confused with the "Boston" measuring cup. When you look at them side by side you can see the difference but why two measuring cups that do the same thing?



I went to the internet to try and find anything out about the difference between the two if I could. What I foundthe Boston Measuring Cup came about from Fannie Farmer and the Boston Cooking School. Around 1896 Fannie worked to standardize cooking measurements. The "Boston" cup has straight sides where the "Cambridge" cup has a curved bottom. The only thing I can think of is that the "Cambridge" style might be easier to clean things out with the spatula.

After she got all the dry ingredients measured out, she then took the Wenzell's egg separator to separate an egg. Yes, I know you can just use the egg shell to do the work..... but I am putting together a story and needed to get another Cambridge product into it.



Above are just a few of the items that Cambridge made for the homemaker (and still useable today). A few other items that every kitchen probably had, the #2857 regulation size glass rolling pin with wood handles. If you want to own one of these yourself, be sure to be at this year's auction or place your mail bid.



To round out the list of items found in the kitchen of 1920 we have the glass dipper with wood handle. Made two ways, the #2557 dipper bowl was plain and the #2556 the dipper bowl had measurements on it. The glass spoon and glass fork, and a funnel made in two sizes, a 2 oz size and a 4 oz size.



I know there are many other items I could have added but we will save that for another time.

Pray for warm weather and a great day for the auction. See you in March.





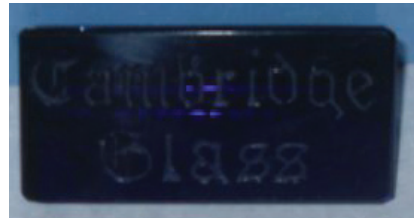
by Larry Everett

This report is provided to keep members up with what's happening on the world's largest Internet Auction site. It is not meant as an educational tool, nor as a pricing guide, and we cannot guarantee the accuracy of listings herein.

Greetings from eBay land! Please forward interesting news to me at: heartlamps@sbcglobal.net.

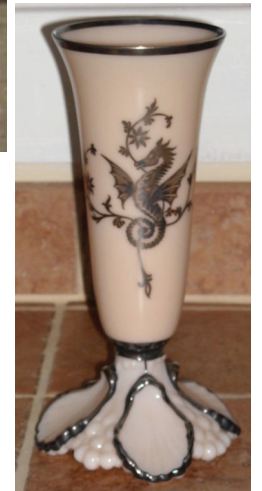
Rose Point

On Jan 31st a set of six #3121 10 oz. flat bottom tumblers sold for \$250. A rare and beautiful 17" cabaret plate complete with a pierced Wallace Sterling Rose Point edge went to a new home for \$404.04. Magnificent!



Statuesque

A matched pair of 3011 statuesque candlesticks with Amber tops sold on Feb 10th. The pair brought \$405. On Jan 23rd a rare 3011/5 - 6 oz. hock in the very hard to find Topaz colored bowl ended at only \$281.



Other Etchings

A Pristine 101 - 32 oz. Cocktail Shaker complete with the hard to find Vichy etching was hammered sold for \$215 on Jan 23rd. On Feb 9th a three piece dresser set with two #198 - Blue II Perfumes, Complete Daubers and a No. 581 - 4" Blue II Puff Box and Cover with etching #703 Florentine on all three pieces ended at \$245. A visually stunning No. 797 - 8" Tumbler Shaped Flip Vase in Ebony with GE Blossom Time etching and flawless Gold trim went to a very happy home for \$414. A 1242 - 10" Vase etched Candlelight managed \$242.49. Also in Candlelight was a beautiful 1300 - 8" Vase, Gold Encrusted Crown Tuscan. This beauty sold on Jan 30th for only \$169.50. On Jan 19th there was a furious bidding war for a rare Crown Tuscan GE Diane 3011 - Cigarette Box and Cover. When the smoke cleared this beauty sold for \$1,275.



Miscellaneous

A very hard to find Ivory #515 Rose Lady Flower Figure with the early style #1 base went to a happy home for \$835.99. On Jan 27th a Cobalt Blue #1015 - Cambridge Glass Pyramid Advertising Sign sold for \$247.65. A crystal Everglade #2 - 5" Candlestick with a very rare Carmen epergne insert sold on Jan 19th for \$241.95. The last item this month is a jewel! On Jan 19th a Seashell #48 - 9" Belled Vase with Rockwell Silver Seahorse decoration and Silver decorated foot flew to \$759 before swimming to a new home.



Happy hunting!



AUCTION FOOD COMES TO YOU!

Tired of running out during those cold, blustery days of March to get a quick sandwich or salad during the lunch break at the auction? Problem solved... just preorder your meal from Theo's! Yes, Theo's Restaurant, a Cambridge favorite of auction goers, now has deliverable boxed meals for our events at Pritchard Laughlin Civic Center. For only \$9.00 you can have a delicious meal delivered right to the Galleria. No extra tax, no extra gratuity needed. It's all included in the purchase price. Please order 24-hours in advance by telephone or fax to ensure delivery. The menu and convenient order form is included for your use.



Prepared Boxed Meals:

Sandwiches: \$9.00 (delivery and gratuity included)

All sandwich boxed meals include choice of pasta salad or broccoli raisin salad or fresh fruit (when in season), chips, cookie, and one bottled water or can of soda

Roast Beef & Cheddar - on Cracked Black Pepper Bread with lettuce, tomato, and horseradish sauce

Chicken Salad Croissant - with lettuce and tomato

Ham & Swiss on Rye - with lettuce, tomato, and mustard

Turkey, Bacon, & Mozzarella - on Whole Wheat with lettuce, tomato, and mayonnaise

Salads: \$9.00 (delivery and gratuity included)

All salad boxed meals come with dinner roll or homemade French bread, cookie, and one bottled water or can of soda

Chicken Ceasar Salad - mixed greens w/ ceasar dressing, parmesan cheese, kalamata olives, pepperoncinis, and grilled breast of marinated chicken

Greek Salad - *Our Signature Salad* - iceberg and romaine lettuce, with onions, tomatoes, cucumbers, marinated mushrooms, feta, kalamata olives, pepperoncinis, croutons and our Greek vinaigrette

Classic Chef's Salad - mix of romaine and iceberg lettuce with ham, turkey, cheddar, tomatoes, onions, cucumbers, egg, croutons and choice of: Ranch, Bleu Cheese, Golden Italian, French, Sweet & Sour, Fat-Free Italian, Fat-Free Ranch, Greek, or 1000 island dressing

Smoked Turkey & Mixed Nut Salad - mixed greens with smoked turkey, mixed nuts, raisins, shredded mozzarella, tomatoes, cucumbers, onions, and Raspberry vinaigrette

Additions:

Cup of Soup: \$1.50

Side Salad w/choice of dressing: \$2.25

Additional Beverage: \$1.00

Orders can be faxed to (740) 432-3101

Or call us at (740) 432-3878

We request that you place your boxed lunch order 24-hours in advance

www.theosrestaurant.us



BOXED MEAL ORDER FORM

We request that you place your boxed meal order 24-hours in advance.

Call Us: (740) 432-3878 or FAX Order: (740) 432-3101

Name: _____
 Telephone: _____ Cell Phone: _____
 Delivery Address: Pritchard Laughlin Civic Center Galleria Delivery Time: Noon
 Credit Card No: _____ Expiration Date: _____

Sandwiches \$9.00 (delivery and gratuity included)

All sandwich boxed meals include choice of pasta salad, broccoli raisin salad or fresh fruit (when in season), chips, cookie, and one bottled water or can of soda

	Quantity	Select One of the Following:
Roast Beef & Cheddar	<input type="text"/>	Pasta Salad <input type="text"/>
Chicken Salad Croissant	<input type="text"/>	Broccoli Raisin <input type="text"/>
Ham & Swiss on Rye	<input type="text"/>	Fresh Fruit <input type="text"/>
Turkey, Bacon, Mozzarella	<input type="text"/>	

Salads \$9.00 (delivery and gratuity included)

All salad boxed meals come with dinner roll or homemade French Bread, cookie, and one bottled water or can of soda

	Quantity
Chicken Ceasar	<input type="text"/>
Greek Salad	<input type="text"/>
Classic Chef's Salad	<input type="text"/>
Smoked Turkey & Mixed Nut Salad	<input type="text"/>

		Quantity
Additions:	Soup	<input type="text"/>
	\$1.50	<input type="text"/>
	Vegetable Chili Soup of the day	<input type="text"/>

Please select type of salad or vinaigrette dressing and insert a numerical number for quantity of each side salad with this chosen dressing.

Side Salad with Dressing \$2.25	Ranch	<input type="text"/>	Sweet & Sour	<input type="text"/>
	Bleu Cheese	<input type="text"/>	Fat-Free Italian	<input type="text"/>
	Italian	<input type="text"/>	Fat-Free Ranch	<input type="text"/>
	French	<input type="text"/>	Greek	<input type="text"/>
	1000 island	<input type="text"/>	Raspberry	<input type="text"/>

Beverages: Please select type of beverage and insert a numerical number for quantity of each beverage selected. An additional charge of \$1.00 will be assessed for each additional beverage ordered beyond that included in the boxed meal.

Pepsi	<input type="text"/>	Dr. Pepper	<input type="text"/>
Diet Pepsi	<input type="text"/>	Sierra Mist	<input type="text"/>
Mountain Dew	<input type="text"/>	Bottled Water	<input type="text"/>

In January, the Glass Will Always Be Warmer - in Florida

By Greg Vass

Having climbed into a car numerous times and driven far, far away searching for good glass, I was no stranger to traveling as a means of securing my catches. But I had yet to actually *board an airplane* to accomplish this mission. When David Ray suggested attending a glass show in Florida this January, I knew it would involve more logistics than driving, but in the long run would be a good experience. And I was correct, even if it did mean being involved in a case of *mistaken identity*.....

My departing flight from snowy Washington National Airport was delayed by three hours. Thus, our plan to do a pre-event orientation visit to our destination, the Sanford, FL Civic Center, was delayed until after dinner. When we left the restaurant to locate the Center, it was well after dark. David was the first to notice that we had arrived at our destination. Two sides of the Sanford Civic Center are comprised of windows.....and ALL THE LIGHTS WERE ON! For about 45 minutes we scoped out the offerings, first from one side of the building, and then the other. We were encouraged by what we saw (about 25-30% of the displays) and were VERY curious about the many items that were just out-of-sight.

The Sanlando Depression Glass Show and Sale is so named because it is located approximately 20 miles north of Orlando in the town of Sanford. The Sanford Civic Center possesses adequate room for their 27 dealers and is an excellent facility for a glass sale. Approximately 40% of the dealers were from the Orange Juice/Sunshine state. The Civic Center is located across the street from a marina, which is at the edge of a beautiful lake. The two large expanses of window glass added an abundance of natural lighting which greatly enhanced the glassware's beauty. Of equal importance it provides window shoppers with an enticing view, if they happen to pass by. Large colorful splashes of green, cobalt blue and pink Depression glass served to allure anyone within sight.

Morning arrived and we were first and second in line. Inside, NCC Show & Sale veterans Sandy Bridwell-Walker, Jim & Leora Leasure, and Ray and Paula Mahoney were five familiar faces. A MUCH more familiar face was that of Fleur de Lys Healy, the pride of NCC in central Florida, who presented a gracious NCC presence and greeted the considerable crowds with an impressive display of Cambridge glass literature at her "National Club Representative" table. It must have been difficult for her to be stationary for hours amidst all that wonderful glass ... all for sale. It was nice to catch up with NCC member, Linda Gilbert, who traveled up from Miami with her friend, Tracy.

Many of the dealers at this show do not set up at shows in northern states, so we were excited to shop their never-seen-before inventories for elusive Cambridge glass treasures. Generous displays of Depression glass were present, as well as dealers with large assortments of Fostoria American and Aladdin lamps – most with original finials. Ray and Paula Mahoney brought along a considerable trove of Cambridge treasures in amethyst and crystal, many of them being those small, curvaceous ladies holding up a globe of some kind above their heads. It was an excellent spot to linger.

Sanford has several antique shops located within a very short walk from the Civic Center. Between Sanford and Orlando is the town of Maitland, which also offers several quality shops to browse. If you are alert enough, you might even find a rare, and almost complete, Caprice item possessing a highly decorative bail, or something cool like that.

After returning to the airport, our only true concern dealt with how to successfully transport our treasures home to Ohio and Washington, D.C. Luckily, neither of us found a punch bowl with under plate we *had* to have. Both of us were leaving with something amethyst and the satisfaction of having attended our very first Florida glass show.

As for the case of mistaken identity...let's say that the last thing you want to jokingly say as you are exiting a rental car parking lot where you need to prove your identity is, "Yeah, we just found this car in your parking lot with the keys in it and thought we would take it for a ride!" As it turned out, the rental car agreement I received possessed *someone else's name*. Uh-oh. After returning to our original leasing agent we were offered a complementary one-day rental. We accepted it and enjoyed the box of chocolate peppermints she had previously forced upon us. Talk about a "Win-Win"!



Greg Vass and David Ray visiting with Fleur de Lys Healy at the Sanlando Show



NCC Books for Sale

Published by NCC • Members receive a 10% discount

TITLE		REGULAR PRICE	MEMBER PRICE
1910 NearCut Catalog Reprint	108 pages, paperback with 2004 price guide	\$14.95	\$13.45
2007 NearCut Value Guide	(when purchased separately)	\$3.00	\$2.70
1927-29 Catalog Reprint	66 pages, paperback, no value guide, includes identification guide	\$9.95	\$8.95
1930-34 Catalog Reprint	250 pages, paperback with 2000 price guide	\$14.95	\$13.45
1930-34 Catalog Index	Index for above	\$2.00	\$1.80
1949-53 Catalog Reprint	300 pages, paperback, no price guide	\$19.95	\$17.95
Cambridge Colors II (New)	Hardcover with price guide	\$19.99	\$17.99
Caprice	200 pages, paperback with 2008 price guide	\$19.95	\$17.95
Caprice Value Guide	(when purchased separately)	\$5.00	\$4.50
Decorates	136 pages, paperback, no price guide	\$14.95	\$13.45
Etchings (2nd Edition)	102 pages, paperback, no price guide	\$17.95	\$16.15
Etchings, Non-Catalogued	70 pages, paperback, no price guide	\$12.95	\$11.65
Etchings: Blossomtime	26 pages, paperback, no price guide	\$7.95	\$7.15
Etchings: Candlelight	30 pages, paperback, no price guide	\$7.95	\$7.15
Etchings: Chantilly	44 pages, paperback, no price guide	\$7.95	\$7.15
Etchings: Diane	53 pages, paperback, no price guide	\$7.95	\$7.15
Etchings: Elaine	64 pages, paperback, no price guide	\$9.95	\$8.95
Etchings: Portia	57 pages, paperback, no price guide	\$7.95	\$7.15
Etchings: Wildflower	42 pages, paperback, no price guide	\$7.95	\$7.15
Rock Crystal Engravings	119 pages, paperback, no price guide	\$17.95	\$16.15
Rock Crystal Engravings (Listings)	Companion to above; lists all pieces in all patterns	\$9.95	\$8.95
Rock Crystal 1940 Illustrated Catalog & Price List		\$14.95	\$13.45
Rose Point - Second Edition	146 pages, paperback with 2007 price guide	\$19.95	\$17.95
Rose Point Value Guide	(when purchased separately)	\$5.00	\$4.50
Pharmaceutical Catalog No.8 1915-1920 Reprint	68 pages, paperback, no value guide	\$9.95	\$8.95

How to Order by Mail or from the NCC Website

Send orders to:

NCC • PO Box 416 • Cambridge, OH 43725

OHIO RESIDENTS PLEASE ADD 7% SALES TAX

Please include your name, complete mailing address and your phone number or e-mail address.

Payments by check or Money Order only, payable to NCC.

Books may also be purchased on the NCC website, www.cambridgeglass.org. Major Credit Cards are only accepted for web purchases.



SHIPPING/HANDLING:

All items (including books) **except** Scottys:

Total order up to \$6	\$3.50
\$6.01 to \$25.00	\$6.50
\$25.01 to \$50.00	\$7.50
\$50.01 to \$75.00	\$8.50
Over \$75.00	\$11.50

A great Cambridge swan-inspired gift for that special occasion. These sparkling 22KT gold-plated swans make superb ornaments for your tree, and wonderful holiday gifts, holiday or wedding table favors, or accent pieces as nut or mint cups. They also add accent to your Cambridge swan collection! A real value at just \$20 each (+ \$5 shipping), these swans are produced in the US by the same company that manufactures the popular Baldwin Brass Christmas ornaments. Each ornament is carefully packed in its own gift box. On sale through the Elegant Glass Collectors' Cambridge Study Group- please contact Bill Dufft at 610-777-3869 or billnvon@aol.com. Quantities are available- buy more than one and save on shipping!

Study Group Reports

Study Group #17

The Columbus Wildflowers

On Thursday, December 2nd, the Wildflowers held our annual Christmas Party / Robber Gift Exchange at the home of Rose MacConkey. Rose had moved in September, and the dining room staff at her new home had been going to serve dinner for our party, but signals got crossed, and at the last minute, we ended up getting one of the Bob Evans Farm Feasts, which was absolutely delicious. We all gathered round the table and talked glass while enjoying a wonderful holiday meal together.

Next, Rose presented our Christmas program where she had selected three readings followed by some very rowdy Christmas contests. Rose read "Shirley and Marcy" then passed out Christmas Bingo cards, and called out Christmas symbols. Bill Lyle was the winner of some decorative Christmas hand towels. Next, Rose read "Goat for Dinner" and we had a scavenger hunt for Christmas scratch off cards. It was a good time searching and wrestling over cards that more than one person found at the same time, and when the cards were all gathered up, Linda Roberts had the one with the scratch off "Winner!" She got a set of Christmas coasters. Rose's last humorous reading was "Somebody and Anybody," then David Ray won the "Cambridge Glass and OSU Trivia" contest and received two Santa mugs.

We skipped our meeting to get right into our always rowdy "Robber Gift Exchange." Some Wildflowers politely chose a gift from the table, but as has become our custom, there were some who delighted in stealing a gift already chosen by someone else. We always have a blast, and when everyone finally ended up with a gift, we opened wonderful Cambridge items that we all had squirreled away throughout the year for this occasion, including: a Rose Chintz footed Bowl; a Diane Cordial; a Wildflower etched Plate and Bonbon; a Rose Point etched Mayo and ladle; a Gold Encrusted Rose Point divided dish; a Pink Comport with unusual etch; and Rose Point etched Salt and Pepper Shakers.

Our evening concluded with an exciting Show and Tell which included; the indestructible Crown Tuscan Snail Vase which bounced off a kitchen counter when Linda's cat put his head in the bag and ran, and the vase fell off the counter and across the floor and was still in one piece!! Other items were: a 2 lite early Crystal Candleholder with the plume of leaves in the middle and open curls on the edge; a 1950's Nude in the odd Harlequin Green color; a #3106 - 5 oz Juice in Heatherbloom etched Portia; a Caprice #69 Candlestick in Moonlight Blue; a Mount Vernon Carmen Comport with muddler stem; a 2 part Candy cut Candlelight; and a Mayo and under plate etched Elaine with ladle.

As always, we all had a wonderful time of friendship, fun and glass, and January 6th our meeting will be at the home of Linda Roberts where we will finally finish the alphabet with W-X-Y-Z. Our meeting adjourned at 10:00 pm.

The Wildflowers wish everyone a Very Happy New Year, and new members in the Columbus, Ohio area are always welcome and can contact either Linda Roberts at lrobert2@columbus.rr.com or Barbara Wyrick at bwyr@ee.net
--respectfully submitted by Barbara Wyrick, Secretary



Barbara Wyrick and Rose MacConkey share a moment at the Christmas party.

NCC Events

2011 Convention
June 22-26, 2011

Glass Shows

March 12-13, 2011

Spring Metroplex Looking Glass Show
 Grapevine, TX

Call: (972)672-6213

More Info: www.meyerlookingglass@hotmail.com

www.meyershows.com

March 12-13, 2011

20's 30's 40's Glass Society DG Glass Show & Sale
 Northlake, Illinois

More Info: www.20-30-40Society.org

March 18-19, 2011

Heart of America DG & Pottery Show & Sale
 Independence, MO

Call: (816)308-7495

Email: hoagc@juno.com

More Info: www.hoagc.org

March 19-20, 2011

Crescent City Depression Glass Show & Sale
 Kenner, Louisiana

More Info: www.crescentcityglass.org/

Email: glass55981@yahoo.com

Call: (504)-392-5887

March 19-20, 2011

Long Island Depression Glass Society Show & Sale
 Freeport, New York

More Info: www.lidgs.org/

Call: (516)798-0492

March 26-27, 2011

Upper Midwest Depression Era Glass and Pottery Show
 & Sale

Bloomington, Minnesota

Call: (651)770-1567 or Email: firesidant@aol.com

April 2-3, 2011

Lincoln Land DG & Pottery Show & Sale
 Springfield, Illinois

Call: (217)546-4790

Email: margaret_davis37@sbcglobal.net

More Info: www.lincolnlndglassclub.com

April 30-May 1, 2011

Del-Mar-Va DG Show & Sale
 Lanham, MD

Call: (301)565-2361/(410)263-4192

Email: ybrian@juno.com

More Info: www.lincolnlndglassclub.com

2011 SPRING SHOW AND SALE

Early American Thru Mid-20th Century
 Pattern, Elegant & Depression-Era Glassware,
 Kitchenware, China, Pottery & Linen Collectibles

Special Display: "Advertising On Glass & Pottery"

New Dates} Saturday, April 30, 2011 10am-5pm
 Sunday, May 1, 2011 10am-3pm

DUVAL HIGH SCHOOL

Greenbelt Road at Good Luck Road, Lanham, MD

Capital Beltway (Outer Loop) Exit 22A Route 193E Greenbelt/NASA

Capital Beltway (Inner Loop) Exit 23 Kenilworth Ave.- Right Lane

To Route 193 East - Greenbelt/NASA (about 2½ miles to Duval H.S.)

Glass Identification - Door Prizes - Snacks - Books

Info: 301-565-2361 / 410-263-4192; Email: ybrian@juno.com; Admission: \$4.00

The 76th Show Sponsored by Del-Mar-Va Depression Glass Club

LOOKING GLASS PRODUCTIONS

FEATURING: Depression Glass, China, Pottery & Vintage Collectibles

Show Schedule

Jan 22-23, 2011
 Cartersville, GA

Feb 12-13, 2011
 San Antonio, TX

Mar 12-13, 2011
 Grapevine, TX

Aug 6-7, 2011
 Pensacola, FL

Aug 13-14, 2011
 Slidell, LA

Aug 27-28, 2011
 Grapevine, TX

For information: Fred or Pam Meyer (972) 672-6213

meyerlookingglass@hotmail.com

www.meyershows.com

2011 Glass Sale & Show

Sponsored by

The 20-30-40 Glass Society of Illinois

Website: www.20-30-40society.org

Elegant, Depression, EAPG & Art Glass

Use this Card & Save \$\$

Table Ware &
 Table Decore

March 12th & 13th 2011

Saturday 10:am - 5:pm Sunday 11:am - 4:pm

Door Prizes

Crystal repair; Glass identification; Reference library;

Admission \$8.00 a person. \$7.00 with this card-limit 2

Free parking and shuttle bus to front door.

CONCORD PLAZA MIDWEST CONFERENCE CENTER
401 WEST LAKE ST. NORTHLAKE, IL. 60164

DEALER DIRECTORY

Dealer Directory - \$24 for 12-months, size limited by box (see below). Includes listing on NCC website.

Advertising Rates:

1/8 page \$15 1/4 page \$20
1/2 page \$30 Full page \$50
(plus \$5 per photograph)

Electronic submissions should be emailed to:

ncccrystalball@charter.net.

Use Word. Mailed submissions and all payments should go to PO Box 416, Cambridge, OH 43725. Deadline is 10th of preceding month. Ads must be paid in advance. Show listings are FREE; send info to PO Box or e-mail address 60 days before event.

ALADDIN LAMP BOOKS

Kerosene Lamps 1884-1940
New book 2007

Bill & Treva Courter
brtknight@aol.com

3935 Kelley Rd. Phone 270-488-2116
Kevil, KY 42053 FAX 270-488-2119

Max Miller

Elegant Glassware • Books • Fiesta
...and more

THE MARKET PLACE

(713) 467-0450 - BUS 10910 OLD KATY RD.
(713) 461-1708 - RES HOUSTON TX 77043
MMXGLASS@aol.com

Cheshire Cat Antiques

Specializing in elegant depression to mid-century era glass and vintage kitchen glass.

Francee Boches > 305-884-0335
fboches@cheshirecatantiques.com

Pull up a Mouse!
Shop 24 hrs a day at
cheshirecatantiques.com



BAKER FAMILY MUSEUM

805 CUMBERLAND ST.
CALDWELL, OHIO 43724
740-732-6410

bakermuseumnellbaker@msn.com

Wed & Thurs 9-4; Fri - Sat 9-5

Classified Ads - Reach over 1,000 avid collectors of Cambridge Glass

CRYSTAL LADY

1817 Vinton St. Omaha, NE 68108
Bill, Joann and Marcie Hagerty
Shop 402-341-0643 Home 402-391-6730

Specializing in Elegant Glass & Collectibles
www.crystalladyantiques.com



Mother Drucker's Penny Drucker

Specializing in Elegant Glassware
Shows & Mail Order

PO Box 18087 (775) 851-7539
Reno, NV 89511 (888) MDRUCKER
www.motherdruckers.com

CRYSTALLINE COLORS

Cambridge • Fostoria • Elegant Glass
Penny Court Mall, Cambridge - 2 booths
Riverfront Antique Mall
New Philadelphia, OH (I-77, exit 81)
Booth #'s 626 and 616

Lynne R. Franks 216-661-7382

GLASS FROM THE PAST

Maureen Gillis



www.glassfromthepast1.com

email: maureen@glassfromthepast1.com

Cherished Collectibles

Shopping 24 hours in our online store
Glassware, Figurines, Collectors' Plates

www.cherishedcollectibles.com
Elegant and Depression Era Glass

TWEAK COLLECTIBLES

Specializing in Elegant Glass
BUY & SELL
WANTED: CAMBRIDGE TURKEYS
417-742-3653
btummons@aol.com

VIRTUALATTIC AT THE GLASS CHALET

SPECIALIZING IN ELEGANT DEPRESSION ERA GLASS
Sandra L. Bridwell-Walker PO Box 3448
William P. Walker Cleburne TX 76033-3448
Phone: 817-202-0940 www.virtualattic.com
Sandy's Cell: 817-559-0328 virtualattic@sbcglobal.net
theglasschalet@sbcglobal.net
Bill's Cell: 817-357-7084

Daugherty's Antiques

Jerry and Shirley
Antiques & Collectibles-Mostly Glass

www.daughertys-antiques.com
email: sdaugh2515@daughertys-antiques.com

Shows & Mail Orders 2515 Cheshire North
402-423-7426 (evenings) Lincoln, NE 68512

THE GLASS HOUSE ANTIQUE MALL
Furniture, Pottery, Glass
Antiques and Collectibles
I-70 Exit 146, East on SR 40

8825 E. Pike
Norwich OH 43767 TEL 740-872-3799

Milbra's Crystal Buy & Sell

Replacement and Matching
Milbra Long (817) 645-6066
Emily Seate (817) 294-9837
PO Box 784
Cleburne TX 76033

Specializing in
Cambridge
Fostoria, Heisey
and others

E-mail: longseat@sbcglobal.net
www.fostoriacrystal.com

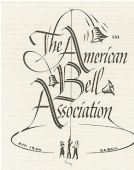
ISAACS ANTIQUES

(740) 826-4015

See our booths in Penny Court Mall in
Cambridge and at White Pillars Antique Mall
(Route 40, one mile west of
I-70 Norwich, OH • Exit #164)

The
American Bell
Association International,
Inc.

7210 Bellbrook Drive
San Antonio, TX 78227-1002
www.americanbell.org



MARGARET LANE ANTIQUES

2 E. Main St. New Concord, OH 43762
Lynn Welker (740) 826-7414

Cambridge Glass Matching Service
Hours: Mon-Fri 10-12 AM, 1-5 PM
or by appointment

Our House Antiques



Linda and David Adams
Las Vegas, NV
1-800-357-7169

www.OurHouseAntiques.com
email: David@OurHouseAntiques.com

National Cambridge Collectors, Inc.
PO Box 416
Cambridge OH 43725

website: www.cambridgeglass.org
e-mail: ncccystalball@charter.net

Friends of Cambridge – Annual Fund

NCC exists through member giving using an Annual Fund system to raise operating funds and to ensure the preservation of Cambridge glass for future enthusiasts. The Annual Fund uses a common member "renewal" date and NCC sends out Annual Fund materials to everyone once a year during March/April. There are no monthly reminders or monthly renewal dates. The Annual Fund is NCC's primary means of support and all Annual Fund gift recognition levels are per household and include membership for all adults within the household. Additionally, each household will receive a subscription to the Crystal Ball newsletter, unlimited admissions to the museum, and rights to vote in elections for the Board of Directors. Multiple households at the same address are welcomed. NCC is a 501C(3) organization and Annual Fund gifts are allowed as a tax deduction under Section 170 of the Internal Revenue Code.

Levels of Membership

Patron	\$35
Benefactor - Century	\$100
Benefactor - Mardi Gras	\$200
Benefactor - Japonica	\$500
President's Circle	\$1,000

President's Circle includes Convention registration for two members in the household and one copy of any new NCC publications.

National Museum of Cambridge Glass Open April thru October only

Located at 136 S. 9th Street in
downtown Cambridge, Ohio
Closed for the season
see you in April

