



Cambridge Crystal Ball

Published by the National Cambridge Collectors, Inc. as a resource which informs, invites and inspires the continued preservation of the glass produced by the Cambridge Glass Company of Cambridge, Ohio for future generations.

Issue No. 428

May 2009

Museum Opens for the New Season

By Cindy Arent

The National Museum of Cambridge Glass has opened for the seventh season at 136 South Ninth Street. Since closing in December after the special holiday hours and group tours, members have worked every weekend cleaning glassware and creating many new exhibits. The National Cambridge Collectors, Inc. has had a museum in operation in Cambridge, Ohio for 24 years!

Every year the three feature rooms at the museum are changed which keeps visitors returning each season to see the new displays. Even though we become attached to the displays each year, the change brings a renewed interest in different patterns, colors and decorations. Both members and visitors gather in front of each new display and share their knowledge about what they see. This is education at its best.

This year the museum dining room display features the Cambridge color Forest Green. The stemware and cocktail icers at each place setting consist of a different Cambridge engraving to coincide with the 2009 convention theme, A Cut Above. The engravings include; Ambassador, Achilles, Candlelight and Adonis. Glassware in the dining room is on loan from Lynn Welker, Frank and Vicki Wollenhaupt, Cindy Arent, Rich Bennett and also from the museum collection.

The 2009 Sample Room features the "must see" collection of Cambridge vases on loan from Rich Bennett. Over 100 Cambridge vases fill the room.

The theme of the third room, "Step Back in Time to 1939" is an interactive display developed by Larry and Susan Everett with the assistance of Frank and Vicki Wollenhaupt (see related article).

The Edna McManus Shepard Education Center has also been re-worked for 2009. Original Cambridge Glass Company patents are on display along with the piece of glass for which it was written. Many times when visitors have reached the end of their museum tour they are very excited about Cambridge Glass and ask us how they can tell if the glass they find in their travels is actually Cambridge. We now have an answer to this question in the Education Center. A showcase now features the easy to remember shapes such as keyhole, 3400 line items and major etchings and engravings. All it takes to get hooked on Cambridge Glass is to find that first piece.

The museum auditorium has also seen change for 2009. A large flat screen television has been mounted on the wall and the improvement in both picture and sound is amazing. Many thanks to Lindy Thaxton for donating the funds for the television and to Carl Beynon for the installation.

In addition to our museum staff, Betty Sivard and Sandi Rohrbough, visitors will meet a new face this year. Janice Hughes, known for her many contributions to NCC over the years, will be joining the staff. They have all volunteered many hours during the off season cleaning and helping with preparations for 2009.

The museum hours are April through October; Wednesday through Saturday from 9 am to 4 pm, and Sundays from noon to 4 pm. We look forward to your visit this year!

(The color insert in this Crystal Ball features photos of the display areas)

2009 Annual Convention - "A Cut Above" - Registration Form on pages 5 and 6 of this Crystal Ball as well as on the website: www.cambridgeglass.org.



PRESIDENT'S MESSAGE

Attention! Convention Coming Soon!

Last weekend, the Elegant Glass Study Group met at the home of Millie & Roger Loucks for an extremely enjoyable day. A diversified mixture of topics was discussed and a dazzling array of glass sufficient to satisfy the most jaded of collectors was on display. The gathering lasted almost eight hours, not unheard of for this group who especially savor each others' company, and ended as it began debating ideas pertinent to keeping NCC both original and contemporary. Having traversed so much ground, and shared so many pleasant hours it would seem unlikely that one topic covered would continue to rush to the front of my memory this past week, but that's just exactly what transpired. The topic was this year's NCC Convention, "A Cut Above" which begins on Wednesday, June 24th, 2009. As I listened to the members of the Study Group make plans and celebrate particularly satisfying moments from past Conventions, I found myself getting caught up in the flow of excitement that permeated the group.

This week, as I remembered that part of the meeting, I found myself drifting back to the very first Convention that Jane and I attended, and could not help but make comparisons. The levels of anticipation are similar in intensity, while vastly different for the most obvious reasons. The first time we had no idea what to expect while now we expect to enjoy ourselves as much as we did the first time! This does not seem like such a stretch considering that in the past ten years, we have not been disappointed. Anyone attending their first Convention would be well advised to try to arrive in Cambridge as early in the week as possible, making sure to visit local antique shops and allow sufficient time to fully experience the NCC Museum. If your schedule allows, set aside an extra day to ramble off to Springfield for a visit to "Heart of Ohio Antique Mall" or head out to Newark, Ohio for a viewing of the Heisey Glass Museum, keeping in mind to be back in Cambridge on Wednesday in time for the 6:30 p.m. start of the NCC picnic, held this year at the Colonel Taylor Mansion, a new and intriguing location deftly presented to the membership by Convention Chair, Sharon Miller. We have come a long way from fried chicken served pool side at the Best Western Motel.

Thursday, June 25, the second official day of Convention is bracketed by two "must see" events. The first takes place at the NCC Storage Building, a program titled "Etching 101 – How Cambridge Did It" presented by the Mold Brothers: Frank Wollenhaupt and Larry Everett. This being the second installment of a universally applauded program delivered during last year's Convention. By way of expressing how strongly I recommend attendance, I can only say that last weekend at the Study Group meeting, people were still giving kudos. As if this was not going to be enough, at 7:00 p.m. Mike Strebler and Mark Nye will be doing their program, "A Cut Above – The Technical and Collectible of Cambridge Rock Crystal" at the PLCC. This presentation is sure to be both enlightening and entertaining. Squeeze about eight hours of talking about glass, looking for glass, buying glass, along with a couple hundred other glass crazed friends between these two programs and just maybe

add a slice of cherry pie at Theo's and you have the characteristic day at the NCC Convention.

For those who are unable to reach Cambridge until Friday, don't despair, there are still a myriad of fabulous events just waiting their turn to entertain. Beginning at 10:30 a.m. in the PLCC conference room, Hilda Pfouts will present "A Flicker in Time- the Evolution of Cambridge Candlesticks". I have it on good authority that Ron will be joining her, and for all who know him, this becomes a "can't miss" situation. All this has taken place before 12:00 Noon on Friday (the new opening time for the Glass Show). It almost seems like the Show is an afterthought, but I'm quite sure that when we all burst through the doors into the Show, the thousands of pieces of glass for sale will ultimately garner our attention. By 6:00 p.m. on Friday a drink or two at the President's Reception will seem like a no-brainer and for this I can categorically speak from experience. This year the Friday Banquet will be the lead in to two of the most eagerly awaited parts of Convention. The Mini-Auction led by Master of Ceremonies: Alex Citron, who's endearing and comedic style makes this one of the most enjoyable times spent at Convention. The second of the two, is the Lynn Welker led "Bring and Brag/ Glass ID Program" which takes place this year for the first time after the Banquet. I can't even begin to imagine what it would be like not having Lynn do this each year – what a treat! Considering the updated formatted time slot for this program, let's make sure we all bring many great items for Lynn to discuss. I definitely want to hear a barrelful of "Wow's" and "Fabulous".

I am running out of space and haven't even hit Saturday or Sunday, which include highlights like: The Glass Dash, The Workers Reunion and so much more. Like I said earlier, the Study Group got me caught up in the excitement of planning for Convention. I'm hoping that in some small way this President's Message has done the same for you; has inspired those who have never, for whatever reason, been able to come to Cambridge in June to say to themselves, "You know, it sounds like fun". "Why *not* this year?" To those who have been part of the festivities in the past and are wavering, I hope I have induced you to say, "Let's go". The ultimate goal being that the largest possible number of members get together at Convention to experience great times together, renew old friendships, and create new ones, to just plain enjoy each others' company. Looking forward to seeing all of you there.

Ken

Ken Filippini
lobstrboy1@aol.com

ONLY QUESTIONS - NO ANSWERS

By Frank Wollenhaupt

Sitting here in my office, surrounded with glass thinking about Easter and the deadline Helen has burdened me with, I am drawing a blank. About this time, my wife says, why don't you say something about the Cambridge Rabbits? Now I don't know if this was brought on by the connection to the Easter Bunny or the two Rabbit toys our dog Dawson has. Doesn't matter, it's a topic and I can spin several hundred words about it.

The Cambridge Rabbit can be found in two sizes (5" and 7") and two different finishes/textures. We refer to the older Rabbit as having (with) FUR and the newer one (without) no FUR. The older Rabbit can be found in Pink, Light Emerald Green, Black and Crystal. The newer (without) can be found in Ritz Blue (Bluebell), Amber and Crystal. The newer one can be found clear and also frosted. I am not aware of any of the older (with) rabbits being frosted but nothing would surprise me.

When I first saw a lot of the "Bunny Boxes" together, the bottom half of the box was upside down. I thought this strange but Lynn Welker told me he liked the little pads of the rabbit's feet. He is right. Take a look at the bottom of one of the rabbits and look at the detail work.

The Bunny Box must have been a good seller for Cambridge to keep it in production for as many years as they did. But where are they all today? I wonder if they were used at Easter time and filled with candy. One thing for sure, I bet a lot of them got broken. Have you ever tried to take the top off of one? The only handle you have are the ears and that isn't much.

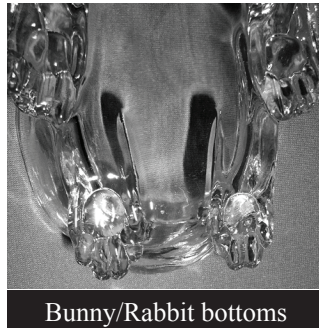
If Cambridge kept the same molds and just took the "Fur" out of the molds to make the smooth one, they also did some other major mold work. The front of the rabbit, the mouth area, is completely re-worked. In the older one, they had a piece of glass that stuck up from the base into the top mouth part of the lid. If you take a close look at the photo you can see this. You can see how they filled in the lid from the missing part of the bottom of the box. I speculate this was done because so many of the rabbits got damaged in this area. The other reason might be that the workers had problems taking the top/bottom out of the mold?

In taking a closer look at the Bunny Boxes side by side, you can see that the newer one (without) is about 1/4 inch shorter and the lid doesn't fit on the top as well as the older one (with). To me it looks like they solved their problem by just trimming 1/4 inch off the bottom mold and filled in the top mouth area. I guess that is a question we will never know the actual answer to.

When was the Rabbit/Bunny Box introduced you ask? I don't know for sure. What I do know is that it wasn't in the Smith's 1927 /29 catalogue but shows up in the 1930/34 catalogue on page 31-21



which I believe shows it was introduced around 1931. From the photo in the book it is hard to tell if this was with or without but from the time and colors it is found in. I believe it is with. In the book they didn't have any numbers associated with them, the only description was "Large "Bunny" Box and Cover" and "Small "Bunny" Box and Cover". The next time I can find them listed is in the 1940 catalogue on page 446. This time they have numbers. "#1315-5 in. Rabbit" and "#1316-7 in. Rabbit" and this time, I believe that they are without.



I would be interested in hearing if anyone has a Rabbit/Bunny in a color I haven't mentioned. Probably someone from Cambridge will tell us that they have one in Crown Tuscan with a Royal Blue head. Come on Cindy, look in the basement.

(If you would like Frank to address a particular topic, or have questions, he can be reached at fewvic303@scglobal.net. He would be DELIGHTED to hear from you.)





by Larry Everett

This report is provided to keep members up with what's happening on the world's largest Internet Auction site. It is not meant as an educational tool, nor as a pricing guide, and we cannot guarantee the accuracy of listings herein.

Greetings from eBay land! Please forward interesting news to me at: heartlamps@sbcglobal.net.

Rose Point

Leading off this month is a 10" P427 deep salad bowl; hard to find in crystal, but this beauty was GE Rosepoint! It sold on March 4th for \$228.50. Next was an unusual #136 creamer and #944 sugar. You rarely see either one of these, so the hammer price of \$165 on March 4th was still a bargain. On March 5th a pair of #1468 egg shaped shakers sold for \$60.95.

Nudes

Things have been relatively quiet in the statuesque line recently. On March 10th a crystal 3011 Flying Lady center bowl managed \$235.50. Interestingly, at the recent NCC auction the same item brought \$350.

Other Etchings

On March 8th an "elegant glass pitcher lid Fostoria Cambridge Heisey" was advertised (and I know we all love descriptions like that!) In reality, this was a covered syrup etched Wedgewood, a real bargain at \$28. Conversely, also on March 8th an 8 1/2" Rosalie goblet advertised as Topaz bowl and blue stem and foot soared to \$332! A magnificent pair of Heatherbloom single lite candles GE Diane sold for only \$150.26 on March 17th. On March 16th a huge (13" diameter) console bowl in Lt Emerald etched Hunt Scene realized \$229.37.

Miscellaneous

On March 8th, an "Inverted Fish" 11" tankard (pitcher) managed \$109.16. A beautiful pair of Moonlight Caprice #1356 candelabras with crystal bobeches and prisms brought \$255.03. This was the month for Rams Head console bowls and sets! A "Yellow" Ram's Head bowl sold "buy it now" on March 17th for \$225. I know we were all hoping that this one would turn out to be Primrose, but sadly, somehow it changed color during shipment to Ivory. On March 23 an Ebony ram's head console set (complete with Wedgewood candlesticks) sold for \$425 and on the same day the purple (Helio) set sold for \$400. I'd like to know the story behind all these sets! On March 17th a Rubina 7" compote with excellent color ended at \$120. This last item for the month really made my heart go "pitter patter", but alas everyone had more money than I did! A really unusual pair of Cambridge #1617 hurricane lamps (smaller ones with the keyhole candlestick base) with "Green Maze Pink Roses" with Gold trim decorated by the Abels Wasserberg Company sold for \$432.89 on March 23rd. Happy hunting!



“A Cut Above”

National Cambridge Collectors, Inc.
36th Annual Convention
June 24 – June 28, 2009
Cambridge, Ohio
Advance Registration Form

Please complete the form on the back of this page and return it no later than June 1, 2009. (Registrations post-marked after June 1 will incur a late charge. See below for cancellation policy.) Send your check payable to National Cambridge Collectors, Inc. along with this completed registration form to:

National Cambridge Collectors, Inc.
Convention Registration
P. O. Box 416
Cambridge, OH 43725-0416

Show Dealers and President Circle Members are exempt from paying the Convention registration fee.

Each person, except Show Dealers and President Circle members, registering for the Convention must pay the registration fee of \$20.00. The registration fee includes admission to the NCC Glass Show and Sale and all other scheduled events as well as a Souvenir. Please register for all events you plan to attend, including those offered at no charge. For children under ten years of age, there is no registration fee; however, they will not receive the Souvenir.

Please list each person registering separately. Names should be given as you wish them to appear on the name badge. Please provide your NCC, Inc. membership number. If registering more than four, please list additional members on a separate sheet.

If you would like to receive an email confirmation of receipt of this registration form, please list your email address and/or telephone contact number. **This is the only way we can provide confirmation of your registration.**

Wednesday evening picnic at the Colonel Taylor Mansion – please join us for appetizers, light supper fare and wine if you so choose (other beverages will be available).

Cancellation Policy

- Written Cancellation at least 30 days before first convention event – full refund.
- Written Cancellation 15-29 days before first convention event – full refund less \$10 handling fee.
- Written Cancellation 5-14 days before first convention event – refund meals only.
- Written Cancellation less than 5 days before first convention event – no refund.

The Convention Registration Form is available on the NCC Website -
www.cambridgeglass.org, as well as in this Crystal Ball.
Please complete and mail as soon as possible.

“A Cut Above”
National Cambridge Collectors, Inc.
Advance Registration Form
June 1 Deadline

<i>Name of Conventioneers (please print legibly as you wish it to appear on your Name Badge)</i>	<i>Membership number</i>	<i>1st Convention?</i>		<i>Friday Banquet choice</i>	
_____	_____	Yes	No	*Chicken	**Pork
_____	_____	Yes	No	Chicken	Pork
_____	_____	Yes	No	Chicken	Pork
_____	_____	Yes	No	Chicken	Pork

Email address _____ Phone Number (____) _____
(for registration confirmation)

City/State _____

	FEE	NUMBER ATTENDING	TOTAL
REGISTRATION:			
Registration: Show Dealers & President’s Circle Members	\$0.00	_____	
Registration: Postmarked by June 1	\$20.00	_____	\$_____
Late Registration: Postmarked after June 1	\$30.00	_____	\$_____
EVENTS:			
Wednesday Picnic at Colonel Taylor Mansion	\$10.00	_____	\$_____
Friday Evening Banquet	\$27.00	_____	\$_____
Saturday Pasta Buffet	\$20.00	_____	\$_____
Optional Donation to NCC for _____ <i>(i.e. museum acquisition, endowment, etc.)</i>			\$_____
		<i>Total</i>	\$_____

* Rotisserie Stuffed Chicken Breast or ** Pork Chop with Apple/Raisin Chutney Sauce, Parsley Red Potato, Vegetable Blend, Family Style Salad, rolls and beverage. Appetizers during cocktail reception.

* * * * *

For Information and Planning Purposes Only
Please indicate how many will attend the following event:

Storage Building Etching Program, 9:30 am Thursday, June 25th _____

Major Field(s) of Cambridge Collecting _____
(This information will appear in the Convention Packet.)

2009 CONVENTION HIGHLIGHTS

Sharon Miller - Convention Coordinator

I hope that by now many of you have sent in your convention registration and made your meal choices. I'm sure you have also noticed a few time changes in the convention schedule as well as events. To launch the convention events, the Wednesday picnic will be held at a restored Victorian Bed and Breakfast, the Colonel Taylor Mansion. The Colonel Taylor is located in the north residential area of Cambridge very near the home once owned by AJ Bennett, owner of the Cambridge Glass Company. The Colonel Taylor Inn has been featured in Midwest Living Magazine and was built in 1878 by Colonel Joseph Danner Taylor. It has many special architectural features throughout its 26 rooms. Parking will be available adjacent to the mansion in the former YMCA parking lot. Owners Jim and Patricia Irvin are delighted to entertain us. Convention packets can be picked up at 2:00 p.m. on Wednesday at the Museum.

The educational programs kick off at 9:30 a.m. on Thursday morning at the NCC Storage Building. The "Moldy Brothers", Frank Wollenhaupt and Co. will be talking about etchings and demonstrating how an etching was made. They will discuss how an etching moved from an idea on a piece of paper to the steel etching plate to the piece of glass. Come and see how your beautiful Cambridge etching was done. The great thing about having the program at the storage building is that attendees can walk through the building and discover the other "Cambridge stuff" stored there.

Following the Etchings 101 program, convention goers can return to the museum to view a tape featuring an interview with Sid Garrett, one of the master cutters at the Glass Plant or interact with the NCC members who have so graciously loaned their glass for display in the featured museum display rooms or visit the new educational displays in the museum Education Center. Others might choose to visit the Mosser Glass Factory and tour the facility to see actual glass being produced. Glassmaking is truly a fascinating process to observe in a real factory setting. Mosser makes and donates our convention favors each year.

On Thursday, convention packets can be picked up at the museum beginning at 2:00 p.m. with the First Timer Orientation scheduled for 3:00 pm. Our new Mentor Chairpersons, Freeman and Jeannie Moore will be in charge of this informal program which gives the 1st time convention goers a chance to be introduced as well as meet those members who have volunteered to be Mentors. It's a great way to meet other Friends of Cambridge and learn how they got the Cambridge Collecting Bug. At 7:00 p.m., another educational offering will be presented by two of our NCC Board members, Mike Strebler and Mark Nye. Their presentation, "A Cut Above – The Technical and Collectible of Cambridge Rock Crystal" promises to be an outstanding opportunity to learn about the process of cutting and engraving. Cuttings, engravings, rock crystal, rock crystal engraving and rock crystal cuttings, sound confusing, it won't be after you attend this program. After it is explained, then you will get to see superb examples of the work done by the Cambridge Glass cutting shops. Mark will handle the technical part and Mike will present the collectibles. Come to this program and see pieces of engraved/cut Cambridge that you might never have seen before.

Friday morning will begin with the opening of registration at 8:00 a.m. at the Pritchard Laughlin Convention Center. This will also be the time that numbers will be handed out for lining up for the opening of the Glass Show and Sale at 12:00 p.m. Details for line up will be detailed

in the convention packet. Prior to the opening of the glass show, an educational program, "A Flicker in Time" will be presented by Hilda Pfouts in the Pritchard Laughlin Conference Room. The program will show the variations and changes in the Cambridge candlesticks such as the Keyhole. Even though it is one of the most recognizable, there were several changes made over the years. Come learn how molds were changed to produce entirely different lines such as Pristine, Virginian or Ram's Head. Hilda will have an informative handout to share with attendees that will list various candlesticks, their changes and reference number. Following Hilda's program the Glass Show will open at 12:00 p.m.

The Friday evening program will feature a sit down meal followed by the Mini Auction featuring our own Alex Citron as auctioneer. This is an easy and fun way to support our museum as all the funds generated go directly to museum operations. See the Mini Auction details on page 16 of this issue. The ever popular Bring and Brag/Glass ID will be the culmination of the evening and is sure to bring out some wonderful glass surprises.

Several Friends of Cambridge have already volunteered to host and decorate a banquet table on Friday evening. If you have not yet volunteered, please let me know. Last year the table decorations on Friday evening were lovely to behold and generated many oohs and aahs. Also remember to bring or purchase your favorite stem for the President's reception held prior to the banquet meal.

Saturday morning comes early as the Glass Dash will open at 7:00 a.m. at a new location. The St. Benedict's Gymnasium is located on Steubenville Avenue, one block north of downtown Cambridge. The gym is a new facility and parking is ample. Remember, the Early Bird gets the best glass! The Glass Dash is open until 11:00 a.m. when the Glass Show and Sale opens for the second day at the Pritchard Laughlin Civic Center. Saturday will also feature the Student Art Show with renderings by local elementary students. Awards and pizza will be at 11:30 a.m.. Convention attendees will have the opportunity to vote for the "Choice Award" during the Glass Show and Sale all day Friday. Following the closing of the Glass Show, a cocktail hour and buffet supper will begin at 7:00 p.m. The Annual Meeting will conclude the evening and the formal part of the convention.

Sunday afternoon the Cambridge Cordials will host the annual Cambridge Glass Workers Reunion. If you are in no hurry to return home, you will want to come to the museum to meet and hear the stories and remembrances of those few workers who are still able to be with us. This year may be one of the last opportunities to visit with the former glass house workers as most are in their late 80's.

In conclusion, if you wish to host and decorate a table at the Friday evening banquet or would like to volunteer to help in any way please email me at s.miller@cebridge.net. Come and join in the educational opportunities as well as the fun and to get to know the Friends of Cambridge.

Featured Displays for 2009

"Step Back in Time to 1939"



Sample Room



Featured Displays for 2009 - continued

Dining Room



A CALIFORNIA GIRL'S COLLECTION

By Darla Williams Budworth

My collection of Cambridge Glass started several years before I was born. My parents were married in December 1931. Just as brides of today register at stores for Bridal Gifts, my mom signed up at Garrett's Hardware Store in the town where I was born, Healdsburg, CA (50 miles north of San Francisco in the heart of the "Wine Country"). Her choice for her dinnerware was Cambridge #3400 series, in Amber. The etching was Gloria, and stems 3035. She always said that my dad would often bring her a piece of her Cambridge glass when he would come to pick her up for a date. The Cambridge glass was displayed in a large china cabinet with glass doors in our dining room. Each year on Thanksgiving, using her Cambridge glassware, my mom served my family and friends a wonderful holiday dinner. She also was an avid bridge player, so each time she had her bridge friends over, out came the Cambridge glass.

My father died suddenly in 1953 at age 47. My mom decided to move with my brother and me to Santa Rosa, CA, to be near her parents. All her Cambridge glass was packed away and stored for many years. In 1985 my husband, Dave, and I remodeled our dining room and put in a built-in glass door china cabinet with lights, which we thought would be filled with our own collection of glass. It was at that time my mom suggested that I take her Cambridge glass. Even though I had my own glassware, (Fostoria) I was glad to have the Cambridge glass that I had grown up with in Healdsburg. As I unwrapped each piece of Mom's Cambridge glass, I realized that some pieces were either missing or chipped. I asked Mom about it, and she didn't know where the missing pieces were, or what the name of the glassware was. So I attended my first Antique Glass Show in 1986, taking a piece of the glassware with me, to see if someone could identify it for me. The show was in San Francisco at Golden Gate Park. Not only did I find out what the glass was, I found a new interest, along with educating myself about this Cambridge glass that we all like to collect. At that first show, I won the door prize, and one of the items I won was a year's subscription to "Dazes" for Depression glass collectors, and from the "Dazes" I found an ad for NCC. Soon I was talking to Phyllis Smith of NCC. I joined NCC around that time at Phyllis's recommendation, and soon I was ordering books from NCC regarding the Cambridge 3400 series and of course one Antique Show became many Shows. I traveled all over Northern CA looking for Cambridge Glass in my mom's pattern. It was not easy to find out here, but I met many nice Cambridge Collectors like Kent Washburn from Texas, who helped me find what I was looking for. Through "The Daze" I purchased pieces of Cambridge from all over the U.S. (Another new experience).

Today my mom's Cambridge is complete again and I have so



many more pieces than she ever had. She is gone now, but I wish she could see it. On Sept. 7, 2007, my husband and I celebrated our 50th wedding anniversary. We decided to have a luncheon in honor of the occasion. Everyone we invited to our home that day, except our son, David, had attended our wedding in 1957. I decided to use my Mom's Cambridge glassware and my parents' 1931 Oneida silver plate silverware (Skyline). The amber color of the glass was perfect for a 50th anniversary and in so many ways, it made it seem like my parents were part of the celebration, too.

Most of the Antique Shows here in Northern CA are not held anymore, except for the big one in San Mateo, CA. So I now buy Cambridge on eBay, not that I need any more. I retired in 2004 after having a long career as a CPA with my own business. I also have just started my 20th year as a volunteer at the Healdsburg Museum, a job I truly love and enjoy. I wish I lived closer to Cambridge, Ohio so that I could take part in the NCC activities, but I'm a "California Girl". You have done a great job with the new NCC Museum. I see the pictures in the Crystal Ball. The Crystal Ball has been the great communicator over the years. I have learned so much from reading it each month.

Thank you for asking me to tell my Cambridge Glass Story.



How It All Began

By Felicia Helm

It began innocently enough with a visit to my sister Cindy in Kansas. Cindy has been collecting glass since the 1970's when you could still buy a box lot for a few bucks at garage sales. When my husband, Dave, and I saw that beautiful colored glass we were curious about it and started researching. We started with Hocking Block Optic pattern because it was plentiful and still inexpensive in our area. That was 1994. We started frequenting the local antique stores and county auctions. At one of these auctions we bought a stunning blue bowl that no other bidders seemed interested in. After some research we discovered it was a 3500/25 9" Gadroon in royal blue. We were blown away by the quality of glass compared to the regular depression patterns we collected. Thus began our addiction with Cambridge and Heisey.

My true weakness is the 3011 line. One day Dave bought a tray lot at one of the local auctions. Included in this lot were two black nude stem cocktails which we later discovered were made by Imperial from a Cambridge mold. Over the years we have been fortunate to run across some great deals that have allowed us to add to our collection of nude stems.

Dave and I have been NCC members for awhile now. This is the most eclectic group of collectors we have been associated with. We love hearing the stories about the great finds and the ones that got away. We joined a local Cambridge club that met in Northern Virginia (a short 2 hour drive), but everyone had to drive a long distance and eventually the club disbanded. If anyone is interested in starting a study group in the Hampstead, MD area (between Baltimore, MD and York, PA), shoot me an email to cambridge3011@att.net.

After 15 years of collecting we have finally narrowed it down to barware and smalls. We still collect Hocking Block Optic and Princess patterns, because old habits die hard.



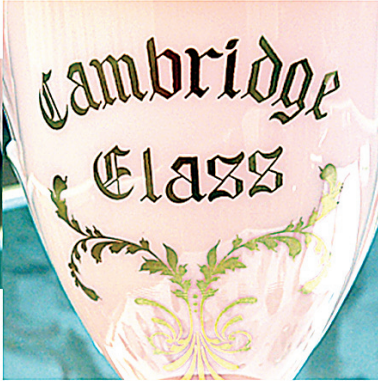
You just never know who will "hop" into your Museum for a visit. Today we had a surprise visit from a very special guest. As we led him through the glass display area he seemed to favor Azurite as his favorite color.

He said to tell you all "Happy Easter"!



ATTENTION CAMBRIDGE GLASS COLLECTORS

The Degenhart Museum is liquidating its entire display & back room collection of Cambridge Glass during the week of the annual Cambridge Glass Convention. Many rare items will be for sale including an advertising urn, owl lamp, ritz blue turkey, CT Flying Lady Bowl, Rosepoint, Wildflower & Chantilly Pieces, Prism Sign, Pencil Dogs, Rams Head Sets, Ebony humidor with Golf Scene, Royal Blue Pieces, Rubina, and much, much, more. Everything must go including original ledger books.



The sale will begin **Wednesday, June 24, 2009, at 10 a.m.** at the museum located off of U.S. Route 22 in Highland Hills just east of Cambridge. The sale will continue through Saturday with **15% discounts beginning on Friday, June 26.** For more information call the museum at **740-432-2626.** This is not an auction.

National Cambridge Collectors, Inc. March 2009 Quarterly Meeting

President, Ken Filippini, called the March Quarterly Meeting of the National Cambridge Collectors Inc. to order at 7:35 pm on Friday, March 7, 2009 at the Pritchard Laughlin Civic Center.

Larry Everett moved, second Frank Wollenhaupt, to dispense with the reading of the minutes from the November Quarterly Meeting and accept them as printed in the Crystal Ball. Motion passed.

Treasurer's Report – Mike Strebler

Mike reported that NCC finished 2008 with a \$2,300 surplus compared to budget. NCC's total cash and investments totaled \$107,296 with \$33,987 in Checking, \$7,699 in Unrestricted Fund, and \$65,269 in the Endowment Fund on December 31, 2008. In addition, NCC paid off \$25,000 (moulds) of debt in 2008. The Board has decided to place all excess revenue for 2009 and future years into the Endowment Fund. Also, the Board has decided to reduce the Unrestricted Fund to \$30,000 with all addition monies going to the Endowment Fund. Mike plans to place the 2008 Annual Report, 2009 Budget, and the Financial Forecast for 2009-2018 on the NCC website. The Annual Fund mailing will occur in mid-March.

Acquisitions – Lynn Welker

Lynn reported NCC is purchasing all the Cambridge Glass related paperwork from Willard Kolb's estate.

Auction – Lynn Welker

Lynn thanked Squeek & Dorothy Rieker for their 10 years of service on the Auction Committee. Jack and Elaine Thompson will be taking over the Auction responsibilities in 2010.

By-Laws – Rick Jones

Rick summarized the constitution and by-laws changes that were printed on page 5 of the January issue of the Crystal Ball. The constitutional change pertained to the election of a Lifetime Member. The revised version reads:

The election of a Lifetime Member shall require a 75% vote of the entire Board of Directors, not just those present at the Board Meeting, by secret ballot.

A motion by Rick Jones, second by Greg Vass, was made to approve this constitutional change. Motion passed.

The By-Laws change eliminates the different levels of membership. The revised version reads:

Each registered adult household member is eligible, upon payment of prescribed dues per year, to be a Member with full voting privileges.

A motion by Rick Jones, second by Ken Rhoads, was made to approve this By-Laws change. Motion passed.

Convention – Sharon Miller

The theme of the 2009 Convention is *A Cut Above*. Sharon has created a tentative schedule for the 2009 Convention. On Wednesday evening, NCC members will gather for a picnic at the Colonel Taylor Mansion in Cambridge. The cost of the picnic is \$10 per person. The Glass Show will open at 12:00 pm on Friday. Bring & Brag/Glass Identification will be held on Friday evening after the Banquet. Theo's is catering the Banquet (\$27 per person) on Friday evening and Ruby Tuesdays will be providing the Pasta and Salad Bar (\$20 per person) on Saturday evening. Also, Sharon thanked Ken and Judy Rhoads for their leadership of the Mentor Program. Ken and Judy will be stepping down this year. Jeannie and Freeman Moore are taking over the leadership of the Mentor Program.

Crystal Ball – Helen Klemko

The Board of Directors has given Helen the option of including colored pages in the Crystal Ball at her discretion. The cost of publishing the Crystal Ball must stay within the confines of the approved budget for 2009.

Endowment – Larry Everett

Larry plans to have an article containing information about the Endowment Fund in a future issue of the Crystal Ball. Also, information about the Endowment Fund will be placed on the NCC website.

Facilities – Carl Beynon

Carl reported the facilities are in good condition.

National Cambridge Collectors, Inc. March 2009 Quarterly Meeting - continued

Glass Dash – Larry Everett

The Beech Grove School is closing due to insufficient funds to make necessary roof repairs. Therefore, the location for the 2009 Glass Dash has been changed to McMahon Gym at St. Benedicts School. St. Benedicts is located within four blocks of the NCC Museum.

Long Range Planning – Rick Jones

Rick reported the Board voted unanimously to eliminate the Members Only section of the website.

Museum – Cindy Arent

Cindy report that all the glass in the Museum has been cleaned and looks wonderful. Cindy thanked everyone who volunteered to clean glass over the winter. Larry & Susan Everett and Frank & Vicki Wollenhaupt and have loaned a portion of their Rose Point collection for the rotating display room. Rich Bennett has his vase collection displayed in the Sample Room. The Dining Room is decorated with Forest Green this year.

Nominating – Tarzan Deel

The 2009 Nominating Committee consisted of Tarzan Deel, Jeff Ross, and Jack Thompson. Current Board Members whose terms are ending this year are Ken Filippini, Rick Jones, and Freeman Moore. Each of these members are planning to run again. Greg Vass has agreed to run for the Board. Ken Filippini opened nominations to the floor. **A motion by Larry Everett, second by Frank Wollenhaupt, was made to close nominations. Motion passed. A vote by acclamation was made to accept the slate of candidates for 2009. Motion passed.** Ballots will be included in the Annual Fund mailing in mid-March.

A motion by Frank Wollenhaupt, second by Rick Jones, was made to adjourn the 2009 Quarterly Meeting. Motion passed.



In Memoriam

This month we are catching up on some recent passings – two from 2008, where the club received late word.

The first is Bob Ralph, a noted Caprice collector and member since the 1970's. His wife Flo tells us Bob passed away last May at the age of 72. They collected Caprice in all colors having purchased a collection from a couple who switched their focus to Tally Ho. Flo remembered how Bob used to like to be first in line at the old show at the Shenandoah Inn (rubbing shoulders with truck drivers) and the camaraderie of going room to room showing you his big buy of the day.

We also learned at Auction of the Spring 2008 passing of Ruth Russell. Ruth was member 740 and hailed from Burton, MI. She is survived by her husband Don, daughter Hedy and son-in-law Brent Barry – loyal and active NCC members all. We are sorry for their loss and we know the care they provided Ruthie.

Finally, Cindy Arent notified the Crystal Ball of the passing of Donald Frontz (82) and Harold Conrath (87). Both gentlemen had worked in the Hot Metal Department at the Cambridge factory, attended our NCC Former Workers Reunion each June and were NCC members as well. And perhaps most important, both served our country with honor during World War!! We thank them both.

Our thoughts and prayers are with all their friends and families.

A photo assignment for all our Friends

Thank you to the Friends who responded to my request from last months Crystal Ball for photos of smoking memorabilia. However, I know that there must be lots more items out there in your collections. I need your help. Please take a photo of your Cambridge items that would fit into this category, e.g. ashtrays, humidors, tobacco jars, cigarette boxes and so on. Different colors, silver overlay, gold encrusted, enamelled - the options are plentiful. Send the photos to:

ncccrystalball@charter.net

You don't need any fancy photography box to take a good photo. Find a place in your home with good lighting, a white or cream wall (no fancy wallpaper or busy tablecloth). Keep it simple. Pull up a table and cover it with something neutral, grab your camera and start clicking. Individual photos work best, but group photos are also really interesting.

It is preferable for your photos to be a minimum of 300 psi. Photoshop is great software, but the better your photo, the better the final result.

I need your photos as soon as possible, so don't delay. Let me know if you have any questions.

The Elegant Glass Collectors' study group introduces a new fundraiser in support of the NCC. Inspired by the beautiful Cambridge glass swans, this high quality hand-crafted 22KT gold-plated swan is manufactured by the same domestic company responsible for the popular Baldwin brass Christmas ornaments. This is a beautiful ornament to adorn your holiday tree or mantle, a classy wedding or party favor for your special guests, and a great accent piece to your Cambridge swan collection. Each ornament is carefully packed in its own golden gift box- ready for gift giving or use.

\$25.00 each (+ \$5.00 shipping & handling); quantities are available. To order, please contact Bill Dufft at (610) 777-3869 or billnvon@aol.com.

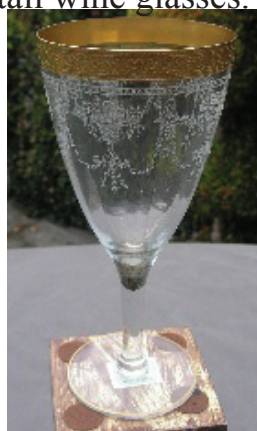


CAMBRIDGE STEMWARE WANTED

I am searching for replacement Cambridge stemware which has been identified in two different ways:

Cambridge 3051-3, and
Cambridge 3051 with Etch #701

I need 4 or more of the 7" tall wine glasses.
Please email or call with quantity and asking price to Edie Beckham, at beckhams@cox.net, or by phone at 310-378-1402.



CAMBRIDGE MOTEL & B&B INFORMATION

NCC Convention – June 24-28, 2009

BAYMONT INN CAMBRIDGE

State Route 209 South
(740)439-1505 or 1-877-BAYMONT
www.baymontinns.com

BEST WESTERN CAMBRIDGE

1945 Southgate Parkway
(740)439-3581 or 1-800-WESTERN
www.bestwesterncambridge.com

HAMPTON INN CAMBRIDGE

8775 Georgetown Rd
(740)439-0600 or 1-800-HAMPTON
www.cambridge.hamptoninn.com

RAMADA CAMBRIDGE

2248 Southgate Parkway
(740)432-7313
www.ramada.com

COMFORT INN CAMBRIDGE

2327 Southgate Parkway
(740)435-3200 or 1-800-228-5150
www.choicehotels.com

DAYS INN CAMBRIDGE

2328 Southgate Parkway
(740)432-5691 or 1-800-432-5691
www.daysinncambridge.com

B&B's COLONEL TAYLOR INN

633 Upland Road
(740)432-7802

1511 CLAIRMONT B&B

1511 Clairmont Ave
(740)432-8406 or (888)524-5005

FRIENDSHIP HOUSE

62 West Main Street,
New Concord
(740)826-7397

If you are interested in mixing your Cambridge adventure with staying at a campground in the area, the one that is closest to the hotel area is:

Spring Valley Campground
8000 Dozer Road
Cambridge, OH 43725
740-439-9291

For more information about camping in Guernsey County log on to: www.visitguernseycounty.com. Click "Where to Play", then click on "Camping". This is a wonderful website to find information on everything available in the area.



The Mini Auction • An NCC Tradition • Friday Night, June 26th

Bring glass to donate to the Mini Auction
All proceeds go to the Museum
A great way to support the mission of the NCC
As in previous years, Auctioneer Alex will officiate

We want good-quality Cambridge Glass, with a market value of \$25 or more. Any donations valued under \$25 may be donated for sale in the museum gift shop.

Bring your glass to the Registration Table at Convention no later than 1:00 pm on Friday

Thank you to our March Museum Volunteers

Sandi Rohrbough
Carl Beynon
Cindy Arent
Betty Sivard
Rich Bennett
Lynn Welker
Lindy Thaxton
Larry and Susan Everett
Frank and Vicki Wollenhaupt
Janice Hughes
Sharon and Joe Miller
Lorraine Weinman
Mark Nye

Study Group Reports

Study Group #17

The Columbus Wildflowers

On Thursday, April 2, 2009, the Wildflowers met at the home of Barbara Wyrick at 7:00 pm. After enjoying a time of food and conversation, we conducted a short business meeting and caught up on club news after taking the month of March off.

We continued our series of programs going through the letters of the alphabet and finding items made by Cambridge that begin with certain letters. This month it was E-F-G-H. We all agreed that this month was a little harder than last month's A-B-C-D letters, but we had so much fun with it, and again tried to find the most items using multiple letters.

Here is what we came up with this month: Emerald Green Hunt Scene Humidor; Ebony Enameled Humidor; Forest Green Feather Detail Swan; Ebony Everglade Daffodil Vase with Hexagonal top (ok, that pushed it just a bit); Eagle Flower Frog; Everglades Handled Mug in Milk; Heatherbloom Gloria Etched Goblet; Forest Green Tumbler with silver Grape design; George Washington Enameled Cigarette Box; Ebony Gold Encrusted Hunt Scene Goblet; Helio Candy with Gold splatter; Geisha Figural; Heron Flower Frog; Ebon with Enamel Vase; Everglades Epergne with Gold trim; Crystal Horn of Plenty Flower Holder; Green Enamel Four Footed Shell Dish; Hunt Scene Hollow Stem Champagne; Heatherbloom Georgian Cordial; Grape Etch Tally Ho Handled 2 oz Tumbler; Florentine #703 Etched Pink Cordial; Light Emerald Green Hat; Gold Encrusted Rose point Footed two Handled Bowl; Four Footed Flared Edge Bowl Etched Rose Marie; and an Experimental Color Soap Dish. And, our special E-F-G-H award goes to Bill Lyle's Elaine Etched Footed Gadroon two Handled Bowl.

After the challenge and fun, we finished the evening with Show and Tell which included: a Vaseline Buddha Figural; a Carmen Tally Ho Goblet with Silkscreen; #200 Blue Caprice Goblet molded into a ruffled Sundae cup; a White Cloud Tumbler; a pair of Crystal Candelabra with bobeches and prisms; a Moonlight Blue Caprice round Ashtray; a Crown Tuscan 6" footed Shell Candy; an early Amber Centennial lidded Candy; a Carmen with Gold #925 Demi Cup and Saucer; #107 Crystal Overnight Pitcher with #695 etch and gold trim; a #3400 Amber 10" two handled Bowl with Gold Encrusted Apple Blossom; and a Carmen pressed Tally Ho Beer Stein with gold silkscreen design.

We all enjoyed our time together, and our meeting adjourned at 10:15 pm. The Wildflowers next meeting will be May 7th at the home of Lance and Marianna Doyle, with our continuing theme of I-J-K-L.

New members in the Columbus, Ohio area are always welcome and can contact either Linda Roberts at lrobert2@columbus.rr.com or Barbara Wyrick at bwyr@ee.net

--respectfully submitted by Barbara Wyrick, Secretary

Inside Edge

NCC Events 2009 Convention June 24-28, 2009

If you know about any upcoming glass shows or other glass events, please pass the word on to us at least six to eight weeks before the show dates. These listings are free of charge.

Glass Shows

June 11-13, 2009

National Imperial Glass Collectors' Society
Annual Convention
St. Clairsville, OH
www.imperialglass.org
E-mail: info@nigcs.org

June 13-14, 2009

Belleville Antique American Glass Show & Sale
Belleville, Ill
Call: (618)972-5049
E-mail: tuckant@gmail.com

July 25-26, 2009

Peach State Depression Glass Show & Sale
Marietta, GA 30060
Call: (770)582-0907
More Info: www.psdgc.com

August 22-23, 2009

Metroplex DG Show & Sale
Grapevine, TX
Call: (817)875-6292
More Info: www.dfwglass.com

September 18-20, 2009 (final September show)

Sanlando DG Show & Sale
Sanford, FL
Call: (407)298-3355 or (407)855-5502
Email: milliesglass@webtv.net

39th Annual PREMIERE GLASS SHOW

Featuring 40 prominent elegant glass dealers from across the U.S.
OSUN/COTC Campus, Country Club Drive, Newark, OH
30 miles east of Columbus off St. Rt. 16

Sponsored by Heisey Collectors of America, Inc.
In conjunction with

38th HCA National Convention

"Artistry in Glass: the Heisey Etchings"
June 17-20, 2009

Thursday, June 18, 1:00 p.m. - 7:00 p.m., \$5.00
(Ticket sales start at 11:30 a.m.)

Friday, June 19, 12:00 noon - 5:00 p.m., \$5.00

Saturday, June 20, 12:00 noon - 5:00 p.m., FREE

Museum Open House with FREE admission

Tuesday, June 16th, Sunday, June 21

Other Convention events to include Annual Meeting, Show & Tell ID session, Special Auction, Former Heisey Employees' Reception

For more info: (740) 345-2932, www.heiseymuseum.org

Proceeds benefit the National Heisey Glass Museum



National Depression Glass Association 35th Annual Convention Glass Show & Sale

Sat, July 11, 2009 • 10 am - 5 pm
Sun, July 12, 2009 • 11 am - 4 pm

O'NEILL CENTER
WESTERN CONNECTICUT STATE UNIV
DANBURY, CT

OFF I-84 EXIT 4
FREE PARKING • HANDICAP ACCESSIBLE
EARLY BIRD ADMISSION SAT. 8-10 am

\$8 GENERAL ADMISSION

GUEST AUTHORS: BARBARA & JIM MAUZY
"MAUZY'S DEPRESSION GLASS"

GLASS SEMINARS GLASS DISPLAYS
FOR MORE INFORMATION Convention@NDGA.net
CALL 516-476-0155 WWW.NDGA.NET

Scotty Dog Bookends

Crystal Opalescent



Cobalt



\$100/pair plus \$12 shipping & handling; sales tax if applicable.

Frosted Cobalt



\$110/pair plus \$12 shipping & handling; sales tax if applicable.

Send orders to:
NCC • PO Box 416 • Cambridge, OH 43725
OHIO RESIDENTS PLEASE ADD 7% SALES TAX
Please include your name, complete mailing address
and your phone number or e-mail address.
Payments by check or Money Order only, payable to NCC.

CRYSTALLINE COLORS

Lynne R. Franks
BOOTH UPSTAIRS IN
PENNY COURT MALL
FULL OF CAMBRIDGE GLASS
IN ADDITION TO 2 BOOTHS AT
RIVERFRONT ANTIQUE MALL

**Classified Ads - Reach
over 1,000 avid collectors of
Cambridge Glass
Advertising Rates:**

1/8 page \$15 1/4 page \$20
1/2 page \$30 Full page \$50
(plus \$5 per photograph)

Electronic submissions should be emailed to ncccrystalball@charter.net. Use Word. Mailed submissions and all payments should go to PO Box 416, Cambridge, OH 43725. Deadline is 10th of preceding month. Ads must be paid in advance. Show listings are FREE; send info to PO Box or e-mail address 60 days before event.

**Dealer Directory - \$24 for
12-months, size limited by
box (see below). Includes
listing on NCC website.**

DEALER DIRECTORY

THE DEGENHART PAPERWEIGHT
AND GLASS MUSEUM, INC.

P.O. Box 186
Cambridge, OH 43725-0186

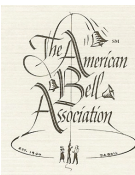
Intersection of US 22 & I-77
Phone 740-432-2626

Dee and Tony Mondloch
Phone: 850-747-8290 glass01@knology.net
1609 Clay Ave. Panama City, FL 32405

Precious & Few

Tiffin and Duncan & Miller Glassware,
Other Elegant Glass, Antiques, Collectibles

Shop: www.apreciousfew.com



The
American Bell
Association International,
Inc.

7210 Bellbrook Drive
San Antonio, TX 78227-1002
www.americanbell.org



DEALER DIRECTORY

When writing to these dealers, please enclose SASE



Daugherty's Antiques
Jerry and Shirley
 Antiques & Collectibles-Mostly Glass

www.daughertys-antiques.com
 email: sdaugh2515@daughertys-antiques.com

Shows & Mail Orders 2515 Cheshire North
402-423-7426 (evenings) Lincoln, NE 68512

Milbra's Crystal Buy & Sell
 Replacement and Matching
 Milbra Long (817) 645-6066
 Emily Seate (817) 294-9837
 PO Box 784
 Cleburne TX 76033

*Specializing in
 Cambridge
 Fostoria, Heisey
 and others*

E-mail: longseat@sbcglobal.net
www.fostoriacrystal.com

THE GLASS URN
 456 West Main Street, suite G
 Mesa, AZ 85201 480-833-2702
 480-838-5936
 602-524-1109

Mail Order Open Shop

CAMBRIDGE, FOSTORIA, HEISEY, etc.

ALADDIN LAMP BOOKS
 Kerosene Lamps 1884-1940
 New book 2007
 Bill & Treva Courter
 brtknight@aol.com
 3935 Kelley Rd. Phone 270-488-2116
 Kevil, KY 42053 FAX 270-488-2119

Cheshire Cat Antiques

Specializing in elegant depression to mid-century era glass and vintage kitchen glass.

Pull up a Mouse!
 Shop 24 hrs a day at
cheshirecatantiques.com

Francee Boches > 305-884-0335
 fboces@cheshirecatantiques.com



B&H ANTIQUE MARKETPLACE
 3739 Highway 29 North
 Danville, VA 24540
 (434) 836-4636

Cambridge • Heisey • Duncan • Fostoria
 Open Thur-Sat 11:00 to 5:00 (Seasonal hours apply)

Glass Menagerie Antiques
 Your Website for quality Glass from
 the 20's, 30's, 40's & 50's.
www.glasstresurechest.com

BAKER FAMILY MUSEUM
 805 CUMBERLAND ST.
 CALDWELL, OHIO 43724
 740-732-6410

bakermuseumnellbaker@msn.com

Wed & Thurs 9-4; Fri - Sat 9-5

Max Miller
 Elegant Glassware • Books • Fiesta
 ...and more
 THE MARKET PLACE
 (713) 467-0450 - BUS 10910 OLD KATY RD.
 (713) 461-1708 - RES HOUSTON TX 77043
 MMXGLASS@aol.com

CRYSTAL LADY
 1817 Vinton St. Omaha, NE 68108
Bill, Joann and Marcie Hagerty
 Shop 402-341-0643 Home 402-391-6730

Specializing in Elegant Glass & Collectibles
www.crystalladyantiques.com

Deborah Maggard, Antiques
 Specializing in Cambridge Glass,
 American Hand-Made Glass & Victorian Art Glass

We buy one piece or entire collections.
 Please contact me at 440-247-5632
 debbie@deborahmaggardantiques.com

P.O. Box 211 • Chagrin Falls, OH 44022

Mother Drucker's
Penny Drucker
 Specializing in Elegant Glassware
 Shows & Mail Order

PO Box 18087 (775) 851-7539
 Reno, NV 89511 (888) MDRUCKER
www.motherdruckers.com



CRYSTALLINE COLORS
 Cambridge • Fostoria • Elegant Glass

Riverfront Antique Mall
 New Philadelphia, OH (I-77, exit 81)
 Booth #'s 626 and 616

Lynne R. Franks 216-661-7382

GLASS FROM THE PAST
 Maureen Gillis



www.glassfromthepast1.com
 email: maureen@glassfromthepast1.com

Cherished Collectibles
 Shopping 24 hours in our online store
 Glassware, Figurines, Collectors' Plates

www.cherishedcollectibles.com
 Elegant and Depression Era Glass

Old Morgantown Glass Collectors Guild
 Glass Museum
 709 Beechurst Ave.
 Morgantown, WV 26505
www.oldmorgantown.org
 Wed - Sat 10-3 Sun noon - 5:00
 For more info: (412)217-2083

VIRTUALATTIC AT THE GLASS CHALET
 SPECIALIZING IN ELEGANT DEPRESSION ERA GLASS

Sandra L. Bridwell-Walker PO Box 3448
 William P. Walker Cleburne TX 76033-3448
 Phone: 817-202-0940 www.virtualattic.com
 Sandy's Cell: 817-559- virtualattic@sbcglobal.net
 0328 theglasschalet@sbcglobal.net
 Bill's Cell: 817-357-7084

GREEN ACRES FARM
 2678 Hazelton Etna Rd.
 Pataskala, OH 43062
 (State Route 310 North)

Sat & Sun 1-7 pm 740-927-1882
 Antiques, Crystal Glass & Collectibles

THE GLASS HOUSE ANTIQUE MALL
Furniture, Pottery, Glass
Antiques and Collectibles
 I-70 Exit 146, East on SR 40

8825 E. Pike
 Norwich OH 43767 TEL 740-872-3799

GATEWAY ANTIQUE MALL, INC.
 JUST NW OF MINNEAPOLIS-ST.PAUL, MN
 Next to Super 8 in Rogers, MN
 (I-94/101 intersection)
 Multi-Dealer
 7 days; 10am - 6pm • 763-428-8286
 Tera & Jim Marsh, Owners
www.gatewayantiquemall1.vpweb.com

ISAACS ANTIQUES
 (740) 826-4015

See our booths in Penny Court Mall in
 Cambridge and at White Pillars Antique Mall
 (Route 40, one mile west of
 I-70 Norwich, OH • Exit #164)

PENNY COURT MALL
 637 Wheeling Avenue
 Cambridge, Ohio
 100 Booths 15,000 sq ft

HOURS: Daily 10-6 Sunday Noon-5
 Closed: Easter, Thanksgiving, Christmas

Call for other holiday hours 740-432-4369

MARGARET LANE ANTIQUES
 2 E. Main St. New Concord, OH 43762
 Lynn Welker (740) 826-7414

Cambridge Glass Matching Service
 Hours: Mon-Fri 10-12 AM, 1-5 PM
 or by appointment

Our House Antiques
 Linda and David Adams
 Las Vegas, NV
 1-800-357-7169

www.OurHouseAntiques.com
 email: David@OurHouseAntiques.com

National Cambridge Collectors, Inc.
PO Box 416
Cambridge OH 43725

website: www.cambridgeglass.org
e-mail: ncccrystalball@charter.net

Friends of Cambridge – Annual Fund

The Annual Fund is NCC's primary means of support. All Annual Fund gift recognition levels are per household and include membership for all adults within the household. Additionally, each household will receive a subscription to the Crystal Ball newsletter, unlimited admissions to the museum, and rights to vote in elections for the Board of Directors. Multiple households at the same address are welcomed. NCC is a 501C(3) organization and Annual Fund gifts are allowed as a tax deduction under Section 170 of the Internal Revenue Code.

Levels of Membership

Patron	\$35
Benefactor - Century	\$100
Benefactor - Mardi Gras	\$200
Benefactor - Japonica	\$500
President's Circle	\$1,000

President's Circle includes Convention registration for two members in the household and one copy of any new NCC publications.

National Museum of Cambridge Glass Open April thru October only

Located at 136 S. 9th Street in downtown
Cambridge, OH
Wed-Sat 9 a.m. - 4 p.m.
Sunday Noon - 4 p.m.
General Admission \$4
Seniors & AAA members \$3
NCC Members and children under 12
FREE

