



Cambridge Crystal Ball

Published by the National Cambridge Collectors, Inc. as a resource which informs, invites and inspires the continued preservation of the glass produced by the Cambridge Glass Company of Cambridge, Ohio for future generations.

Issue No. 424

January 2009



NCC Benefit Auction - March 7, 2009

Auction Preparations: A Sneak Peek Behind the Scenes

By: Jack Thompson

If you ever wondered how all the great Cambridge Auction glass came to be, then read on. Elaine and I decided to shadow Squeek & Dorothy Rieker and Lynn Welker recently for a couple of weekends to help them prepare for the upcoming auction in March. Much time and effort goes into selecting the items to be auctioned and communicating and coordinating with the consignors. This is necessary to ensure that the entire process is completed in time for the information to be submitted for publishing in the *Crystal Ball*. So much work and preparation takes place during the month of November. All of the glass placed up for auction must be delivered to the Museum by the November quarterly meeting. But let's start on Sunday morning following the November quarterly meeting, since that's where we came in.

We strolled into the museum early and got right to work. The first thing that gets done is unpacking all the glass and setting it out on tables in the back room. Each piece is carefully unwrapped and all consignors' lots are initially kept together. They are checked off of the list to make sure that each piece that was supposed to be sent was sent. Sometimes an extra piece or two arrives with

instructions to include it in the auction or donate it to the Museum. All of the packing material and boxes are painstakingly sorted and set aside for future repacking.

Picture the back room of the museum, as I'm sure most of you can. Now try and imagine it with 400 pieces of exceptional Cambridge glass on tables. Not much room is left to maneuver around. In those tight quarters, there is a fine line between helping and being in the way. It is definitely stressful, since the last thing you want to do is accidentally knock something over. Once you're past that, imagine the sensory euphoria setting in. Getting up close and personal with so much wonderful glass, well, it just doesn't get much better than that.

Next on the agenda is the inspection. Each piece is inspected for damage and flaws. This part of the process takes a lot of time and concentration so that each item can be represented accurately. This is extremely important to all of the potential buyers, especially the absentee bidders. Now it's time for the identification. I enjoyed this part the most, because I was able to learn so much. A good many of the pieces are correctly identified on the consignor's list, and they are checked off and it's on to the next one. Many, however, require getting the correct line, numbers, and/or colors, and some need to be identified from scratch. Any pieces that are determined not to be Cambridge are pulled out and returned to the consignor.

During this process, pictures are taken for the web site and for the *Crystal Ball*. A small, make-shift photo studio is set up in the back room where both individual and group shots are taken. Items are grouped by color, by etch, and by rarity. (Look for the color photos in the February *Crystal Ball*.)

Finally everything is ready to be repacked and stored using all of the saved materials and boxes. I can't wait to see it all again next March. By the way, did I mention space was tight back there?

Lorraine Weinman and Elaine Thompson taking photos of some of the items in the 2009 NCC Benefit Auction.



National Cambridge Collectors, Inc.

PO Box 416 Cambridge, OH 43725-0416

Friends of Cambridge – Annual Fund

The Annual Fund is NCC's primary means of support. All Annual Fund gift recognition levels are per household and include membership for everyone within the household. Additionally, each household will receive a subscription to the Crystal Ball newsletter, unlimited admissions to the museum, and rights to vote in elections for the Board of Directors. Multiple households at the same address are welcomed. NCC is a 501C(3) organization and Annual Fund gifts are allowed as a tax deduction under Section 170 of the Internal Revenue Code.

Levels of Membership

Patron	\$35
Benefactor - Century	\$100
Benefactor - Mardi Gra	\$200
Benefactor - Japonica	\$500
President's Circle	\$1,000

President's Circle includes Convention registration for two members in the household and one copy of any new NCC publications.

National Museum of Cambridge Glass Open April thru October only



Located at 136 S. 9th Street in downtown Cambridge, OH
Closed for the season - see you in April

Contacts

NCC Museum [open April thru October only]
(phone)..... (740) 432-4245
(fax)..... (740) 439-9223

Ken Filippini, President.....e-mail: lobstrboy1@aol.com
David Ray, Secretary.....e-mail: westervillesh@hotmail.com
Helen Klemko, Crystal Ball Editor.e-mail: ncccrystalball@charter.net

Address Changes

Please send address changes to:
Membership - NCC
PO Box 416
Cambridge, OH 43725
or by e-mail to:
tarzandeel@verizon.net

Websites

- NCC WEBSITE
www.CambridgeGlass.org
- NCC WEBSITE - MEMBERS ONLY SECTION
www.CambridgeGlass.org/NCCmembers
(User Name: NCC - Password: CarmeN)
- MIAMI VALLEY STUDY GROUP WEBSITE
www.mvsg.org

Officers & Committee Chairs

President	Ken Filippini
Vice-President	Rick Jones
Secretary	David Ray
Treasurer	Mike Strebler
Sergeant-at-Arms	Larry Everett
Acquisitions	Lynn Welker
Archivist	Mark A. Nye
Auction	Squeek & Dorothy Rieker
	Lynn Welker
Budget & Finance	Mike Strebler
By-Laws	Alex Citron
Convention	Sharon Miller s.miller@omeresane.net
Crystal Ball	Helen Klemko, Executive Editor
Endowment	Larry Everett
Facilities	Carl Beynon
Glass Dash	Larry & Susan Everett
Glass Show & Sale	Mary Beth Hackett & Joy McFadden
Membership	Tarzan Deel, Database Administrator
Museum	Cindy Arent
Nominating	Tarzan Deel
Program	David Ray
Projects	Bill Hagerty
Publications	Mark A. Nye
Publicity	Lorraine Weinman Ncc_lw@yahoo.com
Study Group Advisory	
Technology	David Adams, Webmaster

Board of Directors

Cindy Arent	Larry Everett	Ken Filippini
Rick Jones	Helen Klemko	Sharon Miller
Freeman Moore	Mark Nye	David Ray
Mike Strebler	Lorraine Weinman	Lynn Welker



PRESIDENT'S MESSAGE

Random Thoughts

An interesting conundrum! It's December 5th as I sit to write this holiday PZ message, which is a riddle since you will not get to read it until sometime in January. Puzzling? I really desire to wish all of you a Happy Holiday, and a prosperous New Year, but feel like I'd be actually sending one of those, "sorry for this belated card", kind of thing. Now I 'm really confused, should I be in the present tense, the past tense, or the future tense, well, now I'm just plain tense. Since I'm not sure how to unravel this without altering the space time continuum, and you know what a mess that can cause. Perhaps I'll just write it from the heart and trust in you receiving it in a similar fashion, from one family member to another. I sincerely hope you all had a wonderful, peaceful and joyful holiday season. When it comes to the New Year, I have to paraphrase the Rolling Stones "You don't always get what you want but when you try sometimes you get what you need." So I hope you all get what you need in this upcoming year. When I apply this to what I want for Cambridge, the sky is the limit, but realistically I would be satisfied with what we need. So what is the wish list and what can we really get by on?

Several million dollars in the endowment fund by this time next year is what I want. OK, I know that's hardly possible. So what would be a goal that is doable? According to a financial forecast presented to the Board of Directors by Treasurer Mike Strebler, in the year 2018 the fund balance projection is around \$250,000. Sounds nice but in reality is it what we need? I'm not sure! Upon first glance, it sounds like a lot of coin, however, considering what costs are today and where they will undoubtedly be in 2018, I'm concerned it will not be sufficient to ensure the continuance of a healthy NCC. A solution may be found in the wills and bequests area of endowments. Larry Everett has graciously agreed to champion the Endowment position and will need all of our support to make it an unqualified success.

Another want of mine is to see the Annual Fund donation double yearly. Crazy, of course, but after all it's only a want. Based on need, I suspect a repeat of this years' excellent response would be sufficient to help NCC attain its immediate goals. A couple months from now the Fund Chairman will be reaching out to the membership for the 2009 campaign. Please remember we are all responsible for the needs of the organism we have created, and like all of our children, being well fed is an inescapable need in order to enjoy a healthy future.

Something else I want is for the agent who wrote the insurance policy on Baryshnikov's legs or Mariano Rivera's arm to volunteer to do pro-bono work for NCC. Considering that will probably not happen, I would greedily settle for what NCC needs. A competently, generous individual who is versed in basic insurance skills. We are still looking for help to review our existing coverage, as well as advise us in related areas. It is extremely important to make sure that all we have accomplished is not seriously harmed for lack of

sufficient protection. I am not saying that we are not well covered, but an inclusive review would be the prudent step. If you are out there and are curious how you could help, please give us a call.

My next want could be construed as somewhat selfish but really.....Yeah, I guess it is, but I still want it. I want to know, where are all the moonlight blue crackle nudes? This question is rightly more fitting for Frank Wollenhaupt's column: Only Questions, No Answers, but since I've been doing "wants" it sort of fits in. It also fits in with one of NCC's missions, which is education. Along these lines, education comes in many forms. One of the best is articles written by members for the Crystal Ball. We all know things, like what we love, collect and enjoy. What we need is for all of us to share with each other, and I am sure Helen would say this is one of her "wants." Now, getting back to the important question: Where are the blue crackle nudes? Frank, I am counting on you to find an answer to this one!

Now I want as well as need to thank a couple people. First I want to express my appreciation to Linda Adkins for all her efforts on behalf of NCC. Linda's contributions are vast and were given with a quiet willingness derived from sincere concern for the well-being of NCC. Although Linda's health has improved recently, she still has a long journey in front of her. This has led to Linda's recent resignation from the NCC Board of Directors. We have missed her spirited energy and insightful observations at the Board meetings and look forward to the day when she can again rejoin the discussion. Thanks, Linda for both your past and, in advance, your future contributions.

I also want to thank and say welcome to Freeman Moore, who as first alternate, has joined us as NCC's newest Board Member. Freeman is truly deserving of this and from the number of votes he received in the last election, I am sure the membership agrees.

Finally, I want to announce that Rick Jones has taken on the crucial chairmanship of Long Range Planning. Rick presented, at the November meeting of the Board a comprehensive outline for a new Long Range Plan. Then the Board met for a special session in November to begin to flush out where we are headed and what we need to reach that goal. Soon Rick will be reaching out to some of you for insight and to fill important positions that will help secure not only what we need, but also what we want. Maybe we can prove the Rolling Stones wrong!

Ken Filippini
lobstrboy1@aol.com

Ken

Between Friends.....

Stop...before you set this Crystal Ball aside and forget all about me...read on. Based on some emails that I received this month, I have decided to inform, (some may say bore) you with a Q & A article. Why, because some of the questions come from long time members and if long time members are asking these questions, then I'm certain others want answers also.

Q. What has happened to the color version of the CB?

A. About 12 months ago, the NCC Board voted to print the CB in color two times a year - February and August. I am sure you can appreciate that color costs significantly more than black and white, and also not every CB warrants color. Sometimes we focus on programs, the auction listing, convention schedules and so on.

Q. Knowing that it is more expensive to produce a color CB, why can't a color version of each issue be placed on the website and we can view it there?

A. Each month the CB is placed on the website under the Members Only section. If I have received color photos they are color in the website version. Granted, it is not the full expanded color version, but to do that I would have to prepare two formats of the CB.

Q. How long does it take to prepare the CB?

A. Anywhere from 20 to 60 hours. The color version takes much longer and I really work on it over several months. As articles and photos arrive I plan the layout well ahead of time and then rearrange as printing time gets closer.

Q. I do not have a computer so I cannot contribute to the CB.

A. Not correct. Your contribution (article or photo) does not have to come to me via the computer. I can type up your article, so write your article and send it to me. Take a photo, have it printed on good quality paper and send it to me. I can then scan it into the computer. Call me at 864-963-1835 if you need help or my mailing address.

Q. How do I contribute to the CB?

A. Easy...write a short article about your collection, why/how you got started, what you collect; or choose an etch, color or line. Some might say that this is repetition of other articles that have appeared in the CB over the years. Maybe, but remember we are very fortunate to continue to have new members join our wonderful organization each month who have not seen the previous articles. It is new to them, even if it is "old hat" for others. New authors bring a new approach to an article. Remember everything about Cambridge glass is of interest to our Friends.



Q. Why can't we have a "Show & Tell" column each month in the CB?

A. I would love to have a "Show & Tell" column each month, but to do so I need your photos. Occasionally, I do receive photos and I usually hold them until the next color issue to show them in full color. If you would like this column each month - I can certainly include "Show & Tell" items, but you have to send the photos.

Q. I don't know how to access the "Members Only" section of the website?

A. Go to the website at www.cambridgeglass.org. Click on "Members Only" - it is one of the selections available on the left hand side. You will then be asked for the User Name and Password. User Name: NCC, Password: CarmeN (this is case sensitive, so be careful how you type it in). You will then be at the "Members Only - Home Page". One of the selections you can make is "The Electronic Crystal Ball". You will then have the option at looking at many months of the CB. **Just remember some of the files are large and will take time to load.**

Q: I don't know how to reach the Editor of the Crystal Ball.

A. Email me at ncccrystalball@charter.net or phone 864-963-1835.

Q. How do I find my Member Number?

A. Look at the address label of your most recent copy of the CB and you will find it printed above your name and address.

Q. Where do I send a change of address notification?

A. It is so important that you let us know when you have an address change. Changes can be sent by email to tarzandeel@verizon.net or mailed to Membership-NCC, PO Box 416, Cambridge, OH 43725.

Q. How do I place a "Glass For Sale" Ad in the CB?

A. Send me the information along with photos (if appropriate) and I will let you know how much space it will occupy and the cost. We can work together to get the format to your liking.

FINALLY - Whatever your question, ask - we are here to help you.

Helen K.



Constitution and By-Laws Changes

Constitution:

ARTICLE III - MEMBERSHIP

Section 3: Lifetime Membership

Current: To recognize outstanding service to the organization, a person may be elected a lifetime member. They will have all the rights of voting members, but will not be required to pay dues as long as they remain a member of the organization. The election of a Lifetime Member shall require the unanimous vote of the Board of Directors, by secret ballot. Neither a lifetime member, nor the spouse of a lifetime member shall be required to pay yearly dues.

Revised: To recognize outstanding service to the organization, a person may be elected a lifetime member. They will have all the rights of voting members, but will not be required to pay dues as long as they remain a member of the organization. **The election of a Lifetime Member shall require a 75% vote of the entire Board of Directors, not just those present at the Board Meeting, by secret ballot.** Neither a lifetime member, nor the spouse of a lifetime member shall be required to pay yearly dues. If a lifetime member passes away, then their spouse/partner will receive the benefits of life-time membership.

By-Laws:

ARTICLE VIII - MEMBERSHIP DUES

Current:

Section 2: Associate Members

Each additional adult household members is eligible, upon payment of prescribed dues per year, to become an Associate Member, with full voting privileges.

Revised:

Section 2: Members

Each registered adult household member is eligible, upon payment of prescribed dues per year, to become a Member with full voting privileges.

Celebrating the holidays in Cambridge



Mannequin Christmas Carolers



Ready for the parade: Carl and Shirley Beynon looked great in their costumes!



Cindy Arent, Ken and Judy Rhoads, and Elaine and Jack Thompson are ready for the cold weather. Ken had the best hat in the parade!

WE WANT YOUR SLIGHTLY USED GLASS!!

Do you have any Cambridge glass that is cracked or chipped and you don't quite know what to do with it.

WELL....WE HAVE A SOLUTION FOR YOU.

Before you just throw out that slightly used piece of Cambridge glass please consider boxing it up and sending it to the Museum or bringing it with you the next time you visit Cambridge. The wonderful workers at the Museum are working on a project to recycle Cambridge glass to give it a new life. In particular they are looking for etched or decorated pieces. If you are unsure your items would be appropriate for the project, please email a list of your pieces to nccrystalball@charter.net. Thank you so much for your help.

This report is provided to keep members up with what's happening on the world's largest Internet Auction site. It is not meant as an educational tool, nor as a pricing guide, and we cannot guarantee the accuracy of listings herein.

Greetings from eBay land! Many thanks to a growing number of you that have sent me information and comments, I can't do this without your help. I would like to also add reports from non-eBay sales to this forum, so if you would like to tell me about something you acquired at an auction, shop, garage sale or if Santa was good to you, please forward the juicy details to me at: heartlamps@sbcglobal.net.

Rose Point

Leading off this month was an unusually large selection of pressed Rose Point (3105) stems with Royal Blue bowls. The following lots sold on Nov 16 and were fresh from a Michigan estate. Six iced teas, 5 5/8" tall brought \$341.76; five juices, 4 1/8" tall sold for \$265; seven 4 1/8" cocktails (sold as cordials) fetched \$380; and seven sherbets, 4 5/8" tall reached \$217.50. Next up was a pair of Imperial #3750 cocktails GE with Rose Point medallions (4) only. These sold on Nov 1 for \$180.49. I know these are not Cambridge, but thought that the members of the Rose Point mafia might be interested.

Spectacular!

A very lucky member was trolling in uncharted waters and happened on a lovely cocktail shaker in willow blue with the dancing ladies (D185) etching on Nov 25. He clicked the "Buy it Now" button and acquired this beauty for only \$150. Another intrepid sleuth found a Royal Blue 3400 console set (12" 4 ft bowl, and a pair of 5" keyhole candlesticks) GE Apple Blossom on Oct 18 for \$224.72.

Other Etchings

Four Gold Krystal Apple Blossom 6 1/4" tall clarets sold on Nov 1 for \$91. A pair of pink Apple Blossom 3400/647 candlesticks with the rare first variant top treatment sold on Nov 3 for only \$150.88. Also in pink, a pair of three light #1307 candlesticks with Marjorie etching sold "Buy it Now" to a lucky member for a mere \$80. On Oct 19, an amber ball jug (I still can't believe people collect these, just kidding Jeanie) from Australia, GE Portia sold for \$280. A crystal handled 2 oz. whisky etched Portia sold for \$66 on Nov 11. An Emerald two handled ice tub with Rosalie etching in a floral ormolu frame sold for \$52.67. Lastly in this category a covered 4 5/8" syrup etched Wedgwood sold for \$37.00 on Nov 19.

Nudes

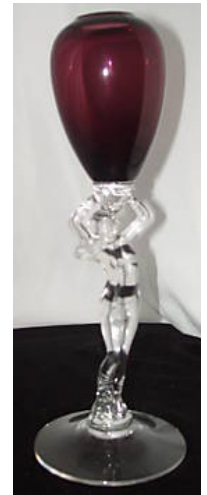
These were lots of nudes for sale during this time period but there's only room for the following: A 7 3/4" shell comport entirely in Forest Green brought \$449.99 on Nov 9; a 10 1/2" tall bud vase with Mulberry vase and crystal stem and foot sold on Nov 12 for \$560; On Nov 11 a cocktail complete with a paper label, Forest Green bowl and Crown Tuscan stem and foot reached \$430.15; also on Nov 11 a crystal cigarette holder with frosted stem brought \$888.88. There was something for everyone!

Miscellaneous

A pair of triangular card table trays, 6 3/4" X 7 1/2" with places for 2

drinks, pack of cigarettes and an ashtray in Emerald sold on Nov 5 for \$89. A 12" Draped Lady in Moonlight sold on Nov 19 for \$809.50. And last, but not least, was a 3500/123 footed urn vase in rarely seen pink that sold on Oct 29 for \$112.50.

Until next time, happy shopping!



CONVENTION 2009 UPDATE
Convention Theme - "A Cut Above"
June 24 – 28, 2009

Plans and programs are starting to come together for the 2009 National Cambridge Collectors Convention. I am still open to an individual or Study Group to present a program during the Convention. So many of you have wonderful knowledge to share about collecting Cambridge Glass; whether it is a particular line, etching or cutting. Don't be afraid to volunteer to share with the Friends of Cambridge. If presenting a program isn't a choice, then consider doing one of the display cases at the Pritchard Laughlin Civic Center. Wouldn't it be wonderful to see some mini collections of unusual rock crystal cuttings and/or etchings displayed by our members?

Once again the Convention Committee is looking for table hosts and hostesses to sponsor a table for the Friday night convention banquet. It was so well received at last year's Convention that several members inquired about an opportunity to host for this year's convention. Our members definitely know how to "show-off" their glass while demonstrating their creativity. We will again need 20 - 25 table hosts. Please consider signing up to decorate a table with your favorite Cambridge glass centerpiece. More details will follow. We will continue to incorporate the seating arrangement of inter-mingling first time Convention attendees with those of us who are old-timers. The Friday banquet is a great way to meet and make welcome newcomers to the Convention while having the opportunity to reconnect with old friends. The schedule for this year's Convention will be more user friendly for our dealers. We hope this will allow them to participate more fully in our social activities.



Finally, I hope each of you can search your collection to find a piece of Cambridge that you could donate to the mini-auction that will again be held on Friday evening following the banquet. The money raised from the mini-auction is earmarked to support our wonderful museum. If you want to support the mini-auction, but can not attend the Convention, you may send your mini-auction donation to the museum to the attention of Sharon Miller. The committee is anxious to hear from you! Please consider volunteering to be an active Friend of Cambridge for the 36th annual convention. My email address is: s.miller@cebridge.net.

You may also drop a note to:

Sharon Miller
55741 Pilck Street
Pleasant City, OH 43772

CAMBRIDGE MOTEL INFORMATION
NCC Auction – Saturday, March 7, 2009
NCC Convention - June 24-28, 2009

All of these motels are located in Cambridge at Exit 178, Ohio route 209 off Interstate 70.

BAYMONT INN CAMBRIDGE
State Route 209 South
(740)439-1505 or 1-877-BAYMONT
www.baymontinns.com

BEST WESTERN CAMBRIDGE
1945 Southgate Parkway
(740)439-3581 or 1-800-WESTERN
www.bestwesterncambridge.com

HAMPTON INN CAMBRIDGE
8775 Georgetown Rd
(740)439-0600 or 1-800-HAMPTON
www.cambridge.hamptoninn.com

RAMADA CAMBRIDGE
2248 Southgate Parkway
(740)432-7313
www.ramada.com

COMFORT INN CAMBRIDGE
2327 Southgate Parkway
(740)435-3200 or 1-800-228-5150
www.choicehotels.com

DAYS INN CAMBRIDGE
2328 Southgate Parkway
(740)432-5691 or 1-800-432-5691
www.daysinncambridge.com

We Receive Emails

The email below, written by Charles Wickwire, was received by Debbie Robinson, Executive Director, Cambridge/Guernsey County Visitors & Convention Bureau and forwarded on to Cindy Arent..

"My wife and I recently spent a long weekend in Cambridge in search of information about the Cambridge Glass Company, to find some glassware, and to simply explore and enjoy the area. We had a wonderful time. We visited your exceptional website before the trip. It is very well organized and has been a great help to us. It is far better than most city and county sites. Well done!

We stayed at the Comfort Inn in Cambridge – an outstanding hotel. People make the difference and the team at the hotel has an exceptional sense of pride.

We enjoyed several restaurants and learned that if "Theo" is in the name, it will be a good dining experience. The Forum is an exceptional restaurant with an interesting menu and wonderful people. The National Museum of Cambridge Glass is a world-class museum. The displays are well prepared, well illuminated, and logically organized so that we may learn about Cambridge Glass. It is obvious that a great deal of care and concern is given to the museum. We learned a great deal.

With our learning at the museum, we set out to find some pieces from the Cambridge plant. Most of the antique stores were well organized and the owners were exceptionally helpful. We found some interesting treasures.

Thank you again for an exceptionally helpful website. We enjoyed our visit tremendously and will return to explore the County again."

Oh, What a Holiday Season!

By Cindy Arent

Many, many thanks to our dedicated volunteers and staff for making the 2008 Museum Holiday Season the most successful yet. We would also like to thank Jonett Haberfield, co-chair of Dickens Victorian Village, for scheduling all of our tour groups and Debbie Robinson, Director of the Cambridge/Guernsey County Visitor's and Convention Bureau, for helping to promote our efforts.

Several hundred visitors were able to learn about Cambridge Glass and the glassmaking process during the extended museum season. It began on November 15 with the auction committee working in the back rooms of the museum while we hosted a tour group in the glass display area and auditorium, talk about teamwork!

The Holiday Open House was held on November 29th and at one point we had 25 visitors off the street in the museum at the same time. During the afternoon, members were arriving from Ohio and Indiana to walk with the NCC entry, sponsored by the Cambridge Cordials Study Group, in the Cambridge Holiday Parade. What a great evening we had promoting our organization and the museum. Following the parade, 50 members and guests enjoyed a delicious covered dish dinner at the museum. Everyone pitched in to clean up at the end of the evening so we could reopen the following day.

A new museum record was set on December 2 as four tour bus groups were guided through the museum during the day. Our experienced volunteers and staff kept right on working even as two large buses were parked in front of the museum at the same time! One woman in a group commented that it was the third time she had taken a trip to our museum and had thoroughly enjoyed every visit.

Another highlight of the season was hosting 200 eighth grade students from the Zanesville, Ohio area on December 10th. The students were taught how to set a formal dining table with Cambridge Glass and also learned the glassmaking process as they were dressed as glassworkers.

As you can see from reading the November/December volunteer list, the museum has been a hub of activity. We are truly fortunate to have members willing to go the extra mile for NCC. Every effort was made to have volunteers sign in at the reception desk, so if we missed any names we apologize.

Best wishes for a Happy and Healthy New Year!



Rich Bennett and Sharon Miller talk with visitors during the Museum Holiday Open House.



The good looking group gathered with the NCC parade entry just before the Cambridge Holiday Parade. They included (L-R): Carl Beynon, Rich Bennett, Sharon Miller, Randall Ross, Jill Ross, Patrick Ross, Judy Momirov, Cindy Arent, Lindy Thaxton, Larry Everett, Sharon Bachna, Shirley Beynon, Jack Thompson, Betty Sivard and Elaine Thompson. At the time the photo was taken, many members were still getting ready.



On board the NCC parade entry in the sleigh were L-R Alayna Cowden (granddaughter of members Bill and Sue Cowden), Patrick Ross (son of Jeff and Jill Ross) along with Betty Sivard and Father Christmas.



Sandi Rohrbough and Cindy Arent dressed members of Holiday Tour Groups as gatherers, glass blowers, pressers, finishers and etching department workers. Museum visitors actually remember the hand made glassmaking process as they tour the glass display area and appreciate the craftsmanship involved in the production of Cambridge Glass.

National Cambridge Collectors, Inc.

2009 Benefit Auction

Saturday, March 7, 2009

Pritchard-Laughlin Civic Center • US 40 West • Cambridge, Ohio

INFORMATION

Preview at 9:00 a.m. Auction starts at 10:00 a.m.

Craig Connelly, Auctioneer Admission: \$2:00

All glass in the auction is guaranteed to be Cambridge (unless noted in the listing). The Auction Committee has checked all glass carefully for verification and damage. Any piece purchased should be examined immediately by the purchaser, and returned within five items if not as represented. All damages are indicated in this catalog: last minute changes or addenda will be announced by the Auction Committee immediately prior to the auction. If no color is indicated herein, the item is Crystal.

TERMS: Payment is expected in cash the day of the sale: checks will be accepted with proper identification.

CATALOG: Lots will be sold in the order printed herein. A number in parenthesis () at the end of a listing indicates the number of that item available for sale. The auctioneer will announce whether such multiples are being sold individually or as a lot. If multiple items are being sold individually, a winning bidder may take any number available. If the catalog indicates "set", "pair" or a similar term, the lot is sold as such.

MAIL BIDS: All absentee bids must be accompanied by a separate check for the maximum bid on each lot. Checks are to be made payable to: National Cambridge Collectors, Inc. Bids will be executed secretly and a winning bidder will pay only the final auction price. Refunds for bid overages will be sent to bidders immediately after the auction. If you are not successful, you will be notified by mail and your check(s) returned to you. All absentee bids must be accompanied by a stamped, self-addressed envelope.

SHIPPING: Absentee bidders who wish their items shipped may include a blank check for shipping charges, or may call (740)826-7414 within a few days after the auction to make shipping arrangements. Items can be shipped to street addresses only: **WE CANNOT SHIP TO P.O. BOXES.**

MAILING ADDRESS: All absentee bids must be mailed to:

Lynn Welker
2 East Main Street
New Concord, OH 43762

**MAIL BIDS MUST BE RECEIVED BY THURSDAY,
MARCH 5, 2009 TO BE ELIGIBLE**

QUARTERLY MEETING: The Quarterly Meeting of the NCC will be held on Friday, March 6, 2009 at 7:30 p.m. A preview of the auction glass will be presented. Show & Tell glass is welcome at the meeting.

MOTEL RESERVATIONS: See page 7 of this Crystal Ball for a list of motels in Cambridge.

If you require additional copies, the catalog listing is available on the website at www.cambridgeglass.org under **Annual Auction.** A copy of this catalog is included with admission to the auction.

2009 NCC Benefit Auction Listing

1	_____	#3 Moonlight Blue 5" Star Candlestick
2	_____	#3120 Gold Krystol 6-oz. Tall Sherbet, Gloria Etch
3	_____	P.1490 Divided Salad Dressing Bowl, Cut Windsor
4	_____	#8 Forest Green Mt. Vernon Sugar and Creamer, Cambridge label
5	_____	#14 Jade 9-1/2" Bowl
6	_____	#4004 Crystal 5" Comport, Marjorie Etch
7	_____	#3105 Amber Pressed Rosepoint 5-oz. Footed Tumbler
8	_____	#214 Crystal Pristine 9-1/2" 3-Compartment Relish, Cut Cambridge Rose
9	_____	#2631 Marjorie Nearcut Open Berry Sugar and Creamer, signed
10	_____	#3500/69 Amber 6-1/2" 3-Compartment Relish, Chrome Farber Base
11	_____	#1309 Crystal 5" Globe Vase, Apple Blossom Etch
12	_____	#663 Crystal 3-Lite Candlestick, Chantilly Etch, Unusual
13	_____	#611 Gold Krystol Decagon 2-1/2" Individual Footed Almond
14	_____	#1115 Crystal 11" Bashful Charlotte Figure Flower Holder
15	_____	#3078 Amethyst 32-oz. Decanter, Crystal Stopper
16	_____	#300 Moonlight Blue Caprice 2-1/2-oz. Whiskey Tumbler, Hard To Find
17	_____	#1447 Forest Green 8" Vase, Aero-Optic
18	_____	#37 Heatherbloom Mt. Vernon 11-1/2" Cake Plate
19	_____	#66 Crystal Caprice 13" 4-Footed Crimped Bowl
20	_____	#3400/638 Lt. Emerald Decagon 3-Lite Candlesticks (pair)
21	_____	#3900/111 Crystal 4-Piece Mayonnaise Set, Rosepoint Etch
22	_____	#3011/40 Crystal 10" Flower or Fruit Center (Flying Lady Bowl)
23	_____	#2561 Feather Nearcut 5-1/2" Taper Vase
24	_____	#1628 Crystal 3-1/2" Coasters, Rosepoint Etch (6), Hard To Find
25	_____	#1040 Crystal 3" Swan, Style II, signed
26	_____	#3400 Royal Blue Bitters Bottle (top has broken cork)
27	_____	#3575 Mocha Stradivari 1-oz. Cordial, Crystal Stem and Foot
28	_____	W101 Milkglass Seashell 4-1/2" x 3-1/2" Cigarette Box
29	_____	Primrose 9-1/2" Ball-Stem Candlestick
30	_____	#3011 Crystal Statuesque 7" Cupped Nude Comport
31	_____	#6004 Emerald Green 8-1/2" Footed Vase
32	_____	#1 Moonlight Blue Caprice 10-oz. Goblet
33	_____	Lt. Emerald 12-1/2" Everglade Bowl (Springtime)
34	_____	#3400/92 Amber 32-oz. Ball-Jug Decanter, Crystal Stopper
35	_____	#4 Crystal 12" Star Candlestick, Rare
36	_____	#3400/1 Amber 13" Bowl, Apple Blossom Etch (use marks)
37	_____	#319 Amethyst 9-oz. Georgian Tumbler (with original turn card showing production record)
38	_____	#3797 Cambridge Square Sherbets (6)
39	_____	#72 Topaz Round-Base Style 7" Candlesticks (hard color to find), (pair)
40	_____	#533 Peach-blo Round Mayonnaise, #725 Etch
41	_____	#496 12-oz. Tall Joe Tumblers; (2)-Forest Green, Amber, Amethyst
42	_____	#1129 Crystal Lion Bookend
43	_____	#1042 Lt. Emerald 6-1/2" Swan, Style I, signed
44	_____	Amethyst Farber Sugar and Creamer
45	_____	#1528 Mandarin Gold 10-1/4" Bud Vase, "Regal Lion" Etch, Rare
46	_____	#3000 Crystal 3-oz. Footed Tumbler with Gold Rooster Decoration
47	_____	#3011/2 Frosted 11-oz. Nude Table Goblet, Rockwell Sterling Overlay, signed Rockwell, Hard To Find
48	_____	#1307 Crown Tuscan 3-Lite Candlesticks, GE Diane Etch (no gold trim), Crown Tuscan stamp (pair)
49	_____	#3114 Crystal 10-oz. Goblets, D/1046 Gold Bands Decoration (5)
50	_____	#319/B/2 Pistachio Georgian Oval Basket, Pistachio Handle, Cambridge label
51	_____	#901 Amber 12-1/2" Oval Service Tray, Roundware
52	_____	#5 Pink Stratford 3-Pint Pitcher, signed & (4) Tumblers (lighter color than pitcher; a few nicks on the set)
53	_____	#1402/37 Crystal Satin Tally-Ho 2-1/2-oz. Handled Tumbler, Silver Decorated "Just A Swallow"
54	_____	#163 Crystal 8-1/2" Asparagus Plates (light scratches), (8)
55	_____	SS#31 Mandarin Gold 8" 4-Footed Oval Shell Dish, Cambridge label
56	_____	#54 Gold Krystol Martha Washington 8-oz. Stein, Gold Handle, Unusual
57	_____	#57 Azurite 8" Low Footed Comport
58	_____	#3675 Crystal 1-oz. Cordial, Blossomtime Etch

- 59 _____ #2660 Wheat Sheaf Nearcut Child's Punch Bowl, signed
- 60 _____ #1402/77/78 Crystal Tally-Ho 13" Footed Punch Bowl, Ladle, and (12) Crystal 6-oz. Punch Mugs (set)
- 61 _____ #2355 Moonlight Blue 8" Epergne Vases (2), and Matching 12" Vase Arm (chip on fitter), Hard To Find
- 62 _____ #3625 Crystal 7-oz. Tall Sherbets, Chantilly Etch (fleabite on foot of 1), (6)
- 63 _____ #1402/52 Amethyst Tally-Ho Ice Pail with Chrome Handle, and Tongs
- 64 _____ #2626 Radium Nearcut Toothpick Holder
- 65 _____ #1471 Crystal Salt and Pepper Shakers, Rosepoint Etch (cloudy)
- 66 _____ #489 Forest Green 22-oz. Jug (no lid), and Tumbler
- 67 _____ #7606 Crystal 7/8-oz. Cordial, Marjorie Etch (mfg. flaw)
- 68 _____ #319 Carmen 9-oz. Georgian Tumblers (tiny nicks to pattern), (4)
- 69 _____ #1206 Amber 76-oz. Jug, Twist-Optic, and (4) Matching 12-oz. Tumblers (small chip on 1), (set)
- 70 _____ #993 Crystal 12" 4-Footed Bowl, Lily-of-the-Valley Etch (stained)
- 71 _____ Ebony Saratoga Hat Match Holder or Toothpick, Century of Progress, Chicago 1933, Unusual
- 72 _____ #94-1/2 Rubina 5"H x 6-3/4"W Sweet Pea Vase (mostly red color)
- 73 _____ #38 Mocha Caprice Sugar and Creamer
- 74 _____ SS#12 Crown Tuscan 9" Seashell Comport, Charleton Harbor and Roses Décor is worn
- 75 _____ #3400/46 Forest Green Cabinet Flask 12-oz. Decanter (some stain, minor inside stopper chip)
- 76 _____ #3500/64 Crystal 12" 3-Compartment Celery and Relish, Minerva Etch (factory grind on edge)
- 77 _____ #1040 Crown Tuscan 3" Swan, Style III
- 78 _____ #319 Royal Blue 9-oz. Georgian Tumblers (2)
- 79 _____ #3797/17 Cambridge Square Coffee Cups and Saucers (6 sets)
- 80 _____ #31 Moonlight Blue Everglade 16" Tulip Plate
- 81 _____ #32 Moonlight Blue Everglade Candlesticks (pair)
- 82 _____ #3011 Crystal Statuesque 7" Cupped Nude Comport, Apple Blossom Etch, Hard To Find
- 83 _____ #3900/166 Crystal 14" Torte Plate with Rolled Edge, Wildflower Etch
- 84 _____ #1357 Crystal Caprice 3-Lite Candlestick (small chip 1 leaf)
- 85 _____ #168 Amber 10" Center-Handled Sandwich Tray, Gold Encrusted #715 Willow Border Etch is worn
- 86 _____ #3400/67 Gold Krystol 12" 5-Compartment Celery and Relish Service, Gloria Etch
- 87 _____ #3132 Crystal 12-oz. Iced Teas, Cut Mansard (3)
- 88 _____ #300 Amber Caprice Finger Bowl, Mocha Caprice Saucer, Rare
- 89 _____ #980 Crystal 5" Cheese Dish and Cover, Unknown Grey Cutting, signed
- 90 _____ #3400/45 Gold Krystol 11" 4-Footed Bowl with Fancy Edge, signed, and #3400/647 Decagon 6" 2-Lite
Candlesticks, Diane Etch (set)
- 91 _____ #922 Crystal Cream Soup and Saucer, Gold Encrusted Rosepoint Etch (pinhead nick at handle)
- 92 _____ #5000 Crystal 6" Footed Nappy, Martha Etch
- 93 _____ #3126 Forest Green 1-oz. Cordial, Crystal Stem and Foot
- 94 _____ #3011/7 Crystal Statuesque 4-1/2-oz. Nude Claret, Optic Bowl
- 95 _____ #4000/129 Mandarin Gold Cascade 2-Piece Mayonnaise Set
- 96 _____ #3135 Gold Krystol 12-oz. Footed Tumbler, Gloria Etch
- 97 _____ #1066 Moonlight Blue 11-oz. Goblets (nick on 1 foot), (8)
- 98 _____ #3400/92 Crystal 32-oz. Ball-Jug Decanter, Gold Encrusted Rosepoint Etch (inside stopper chip), Rare
- 99 _____ #513 Dianthus Pink 13" Draped Lady Figure Flower Holder on early scalloped base (crack in base)
- 100 _____ #2699 Buzz Saw Nearcut Molasses Can and Cover (syrup), signed
- 101 _____ #477 Crystal 9-1/2" Corn Dish or Pickle Tray, Rosepoint Etch
- 102 _____ #3400/1174 Willow Blue 6" Square Plates with seat, Apple Blossom Etch, signed (4)
- 103 _____ #1236 Royal Blue 8" Ivy Ball, Crystal Keyhole Stem and Foot (pinhead nick at opening)
- 104 _____ #3500/57 Crown Tuscan 8" 3-Part Candy Box and Cover, Gold Encrusted Rosepoint Etch (handle crack)
- 105 _____ Windsor Blue Daisy and Button Hat, Hard To Find
- 106 _____ #1138 Crystal 8-1/2" Seagull Figure Flower Holder
- 107 _____ #2780 Green Carnival Inverted Strawberry Nearcut 7" Bowl, signed (base chips)
- 108 _____ Azurite Perfume Lamp & 2 Globes (1 Black Enamel Trim; 2nd has chip on fitter), Black Metal Fittings
- 109 _____ Crystal Satin 8" 3-Compartment Candy Box and Cover, Decalware Flower Décor, Unusual Size
- 110 _____ #989 Peach-blo 10-1/2" Flip Bowl, signed
- 111 _____ #3500/42 Crown Tuscan 12" Covered Urn, Charleton Rose Decoration, Gold Trim wear (flaw on lid edge)
- 112 _____ #3103 Carmen 1-oz. Cordial, Crystal Stem and Foot
- 113 _____ #3400/63 Crystal 9-1/2" Dinner Plates, Rosepoint Etch, 4 are signed (8)
- 114 _____ #4 Helio 8" Bowl, Iridized Band and Gold Wheat Decoration is worn (stained)
- 115 _____ #2651 Feather Nearcut Round Dome Butter and Cover, signed (minor chips on inside flange of base)
- 116 _____ #300 Crystal Caprice 9-oz. Goblets (4)
- 117 _____ #3400/1240 Amber 12" 4-Footed Oval Bowl, Gold Encrusted Wildflower Etch, Hard To Find

- 118 _____ #103 Crystal 7" 3-Part Candy Box and Cover, Sterling Silver Finial, Chantilly Etch (small chip to lid edge)
- 119 _____ Nearcut Sweetheart Child's Creamer, Covered Sugar, and Spooner-(nicks), signed
- 120 _____ #10 136-Page Nearcut Catalog Photocopy (not in print)
- 121 _____ #1916 69-Page Nearcut Catalog Photocopy (not in print)
- 122 _____ #11 72-Page Chemical Catalog Photocopy (not in print)
- 123 _____ #12 32-Page Chemical Catalog Photocopy (not in print)
- 124 _____ #3400/92 Forest Green 32-oz. Ball-Jug Decanter (minor inside stopper chips)
- 125 _____ #3400/71 Carmen 3" 4-Toed Nut Cup
- 126 _____ #437 Ritz Blue/Blue II 9-1/2" Candlesticks, Gold Encrusted #708 Etch (pair)
- 127 _____ Crystal #628 Candle Base, (2) #1563 4-Candle Arms (large chip on 1 fitter), and (4) #1536 Peg Nappies
- 128 _____ #274 Crown Tuscan 10-1/2" Footed Bud Vase, Gold Encrusted Rosepoint Etch
- 129 _____ #300 Moonlight Blue Caprice 10-oz. Footed Tumblers (2)
- 130 _____ SS#7 Experimental Dark Blue Opaque 9" 3-Footed Seashell Bowl, signed, Extremely Rare
- 131 _____ #522 Crystal 10" Two-Bun Geisha Figurine, Black Square Wood Base
- 132 _____ #1371 Bridge Hounds; Smoke, Amethyst, Mocha, Amber, Crystal, Crown Tuscan-(chip), Emerald-(chip)
- 133 _____ #3400/91 Crystal 8" 3-Compartment Relish, Cut Lucia (stained)
- 134 _____ #1044 Lt. Emerald 10-1/2" Swan, Style I, signed (roughness on 1 fin)
- 135 _____ #158 Peach-blo Footed Marmalade, Notched Cover, #701 Etch (foot out of round)
- 136 _____ #3126 Forest Green 2-1/2-oz. Wines (large rim chip on 1), (4)
- 137 _____ #3400/200 Crystal 3-Compartment 2-Handled Relish, Wildflower Etch (off-color)
- 138 _____ #236 Moonlight Blue Caprice 8" 4-Footed Rose Bowl (scratches) with Flower Frog Insert (factory grind)
- 139 _____ W106 Milkglass 6" Seashell Comport (rim repair)
- 140 _____ #1269 Crystal Martha Washington Candlesticks with Bobeches and Prisms
- 141 _____ #3400/54 Crystal Cups and Saucers; Portia Etch (5 sets); Apple Blossom Etch, signed (1 set)
- 142 _____ #3400/96 Crystal 2-oz. Oil and Vinegar on Caprice Tray, Diane Etch (set)
- 143 _____ #3500/37 Willow Blue 7" 2-Handled Tall Comport (deep straw mark at handle)
- 144 _____ SS#18 Crown Tuscan 10" 3-Footed Seashell Bowl, signed (chip on bottom of 1 foot)
- 145 _____ 7A Mardi Gras 6" Vase, Cambridge label, Very Rare
- 146 _____ #680 Tahoe Blue Vanity Box and Cover (stained, chip on base and lid)
- 147 _____ Rubina 11" Bowl, Wide-Optic
- 148 _____ #1041 Crystal 4-1/2" Swan, Style I, signed
- 149 _____ SS#2 Crown Tuscan Seashell 7" Plate, Charleton Gardenia Decoration is worn
- 150 _____ #94 Ebony 7-1/4" x 8" Sweet Pea Vase, Gold Encrusted Laurel Wreath has wear
- 151 _____ Amber Honeycomb 8" Footed Candy Jar and Cover (mismatched color)
- 152 _____ #65 Crystal Caprice 11" 2-Handled 4-Footed Oval Bowl & #70 Matching 7" Candlesticks with Prism (set)
- 153 _____ W120 Milkglass 8" Dresden Lady Figure
- 154 _____ #85 Amber 10-1/4" Vases, Gold Encrusted #708 Etch, label 22 ct gold on 1 (gold trim wear on foot), (2)
- 155 _____ #3500/17 Crystal 12" Footed Bowl, Rosepoint Etch
- 156 _____ #1402/116 Amethyst Tally-Ho Salt and Pepper Shakers (plastic lids are discolored)
- 157 _____ #3500 Crystal 1-oz. Cordial, Valencia Etch
- 158 _____ #3011/40 Crystal Satin 10" Flower or Fruit Center (Flying Lady Bowl), (foot flaw)
- 159 _____ P.671 Crystal Pristine 6" Ice Tub, Lotus Silver Decoration
- 160 _____ Original Price List for the Original 1930 Catalog, Pages 1-71
- 161 _____ #2760 Archfoot Daisy Nearcut Basket
- 162 _____ #3011/7 Gold Krystal Statuesque 4-1/2-oz. Nude Claret, Crystal Stem and Foot, Optic Bowl
- 163 _____ #299 Peach-blo 5" Candy Box & Cover, Lt. Emerald Rose Knob, Floral Engraved (factory streak in box)
- 164 _____ #433 Ivory Wedgewood 8-3/8" Plate (matches Ram's Head), Gold Trim
- 165 _____ #1401 Forest Green Jefferson 3-oz. Cocktails, Grape Etch (2)
- 166 _____ P.733/734/735 Gold/Crystal/Moonlight Slant Ashtray Set
- 167 _____ #17 Moonlight Blue Caprice Cups and Saucers (4 sets)
- 168 _____ Wax Test Form for Eagle Bookend, Very Rare
- 169 _____ #3797/41 Cambridge Square Sugar-(nicks on base) and Creamer
- 170 _____ #107 Lt. Emerald 76-oz. Covered Jug, #523 Chrysanthemum Etch (jug scratched, inside rim nicks on lid)
- 171 _____ #3625 Crystal Bell, Chantilly Etch
- 172 _____ #1041 Lt. Emerald 4-1/2" Swans, Style I, #1050 Candle Holder Inserts (2)
- 173 _____ #28 Moonlight Blue Caprice Alpine 14" 4-Footed Plate (scratches, large chip to edge)
- 174 _____ #279 Crystal Martha Mayonnaise with Ladle-(chipped), #327 7" 2-Handled Plate, Blossomtime Etch
- 175 _____ #16 Helio 7-1/2" Bowl, signed
- 176 _____ #842 Ritz Blue/Blue II 12" Decagon Bowl, Heavy Floral Silver Overlay, signed (scratches/stained/base chip)
- 177 _____ #3 Crown Tuscan 9" Seashell Plate, Charleton Roses Decoration, Gold Trim wear, Very Hard To Find

178 _____ #3575 Tahoe Blue Stradivari 1-oz. Cordial, Crystal Stem and Foot
179 _____ #62 LaRosa Caprice 12-1/2" 4-Footed Belled Bowl
180 _____ #3500/69 Crystal 6-1/2" 3-Compartment Relish, Sterling Silver Floral Decoration
181 _____ #3130 Crystal 7-oz. Saucer Champagne, Rosepoint Etch, Unusual
182 _____ Crystal Pair Doorknobs, Original Brass Fittings (2)
183 _____ #1402/33 Carmen Tally-Ho Sugar and Creamer
184 _____ Turquoise Trefoil 7" Plates (1 has edge chip, 1 has edge cracks), (2)
185 _____ #3797 Cambridge Square 9-1/2" Across Deep Bowl, Vancoran Etch (small base chip)
186 _____ #2660 Wheat Sheaf Nearcut Punch Bowl (scratches), Base & (10) Cups, signed (some cup nicks), (set)
187 _____ #1128 Crystal Scotty Dog Bookends (bruised chip), (pair)
188 _____ #300 Crystal Caprice 1-oz. Cordials (10)
189 _____ #864 Amber 6" 3-Footed Candy Box and Cover, Cleo Etch, Gold Trim wear
190 _____ #1066 Royal Blue 10-oz. Goblets, Crystal Stem and Foot (3)
191 _____ #1338 Crystal 6" 3-Lite Stairstep Candlesticks (pair)
192 _____ #119 Crystal 7" Across Handled Basket, 11" Tall, Rosepoint Etch, Hard To Find
193 _____ #3400/11 Gold Krystal 3-Piece Mayonnaise Set, Gloria Etch, Crystal Ladle, signed
194 _____ #128 Crystal Martha 14" Cabaret Plate, Chantilly Etch
195 _____ #1369 Amber Melon Decanters, Chrome Locking Stand is corroded, and (6) Matching 2-1/2-oz. Tumblers
196 _____ #7966 Crystal 1-oz. Cordial, Chintz #3 Etch
197 _____ W115 Milkglass Everglade 16" Tulip Plate (small chip to pattern)
198 _____ #3797 Cambridge Square Deep Ash Receiver, Vanadium Corp. Etch
199 _____ #3051 Peach-blo 10-oz. Footed Tumblers, Wild Rose Etch, Narrow-Optic (etching slip top of 1), (3)
200 _____ #3500/64 Crystal 12" 3-Compartment 4-Footed Celery and Relish, Rosepoint Etch
201 _____ #3400/113 Crystal 35-oz. Decanter, Diane Etch (bubble flaw on base)
202 _____ #3011/40 Crown Tuscan 10" Flower or Fruit Center (Flying Lady Bowl), (line at knee)
203 _____ #3122 Crystal 1-oz. Cordial, Portia Etch
204 _____ #8701 Lt. Emerald 10-oz. Tumblers, #731 Rosalie Etch (2)
205 _____ #3400/66 Peach-blo 10" Club Luncheon Plate (grill), Apple Blossom Etch, Rare
206 _____ #3900/100 Crystal 6-oz. Cruet, Wildflower Etch
207 _____ #1043 Lt. Emerald 8-1/2" Swan, Style I
208 _____ #183 Crystal Caprice 80-oz. Ball Jug, and (6) #184 12-oz. Tumblers (light scratches), (set)
209 _____ #1 Carmen 4-1/2" Twist Muddler
210 _____ #3797 Cambridge Square Cocktails (6)
211 _____ #29 Primrose 12" Bowl
212 _____ #1066 Crown Tuscan Comport, Ebony Foot, Rare
213 _____ #3900/166 Crystal 14" Torte Plate with Rolled Edge, Rosepoint Etch (scratches)
214 _____ #701 Peach-blo Laurel Wreath Place Cards (2)
215 _____ #3500/13 Crystal Sugar Basket, Chrome Handle (no tongs)
216 _____ #1206 Carmen 76-oz. Jug, and (6) 12-oz. Tumblers, Twist-Optic (tumblers darker color than jug), (set)
217 _____ #1525 Crystal 1" Square Individual Salt Dips, 8 in Original Box, Cambridge label (set)
218 _____ #1320 Amethyst 14-oz. Decanter, Chrome Farber Duchess Lace Holder
219 _____ #3109 Crystal Individual Nut Dishes, Vintage Etch (rim nicks on 2), (10)
220 _____ #1070 Ebony 36-oz. Pinch Decanter, White GE Apple Blossom Etch
221 _____ #2699 Buzz Saw Nearcut Spooner, Covered Sugar, and Covered Butter, signed (set)
222 _____ #1604 Crystal Hurricane Candle Bowls, Rosepoint Etch (1 shade repaired, flake at fitter), Hard To Find (2)
223 _____ #135 Helio 11-1/2" Cheese and Cracker Set
224 _____ #977 Peach-blo Decagon 11" 2-Handled Basket, signed (unfinished base)
225 _____ #94 Ebony 7"H x 8-1/4"W Sweet Pea Vase, Silver Overlay Oriental Scene
226 _____ #1320 Royal Blue 14-oz. Cordial Decanter, Crystal Foot and Stopper
227 _____ #244 Amber 10-1/2" Service Plates, #715 Willow Scene Etch, Gold Trim (2)
228 _____ Peach-blo #704 Etch 18-Piece Luncheon Set; #933 Cups and Saucers, #556 8" Plates, signed
229 _____ #6004 Crystal 8-1/2" Footed Vase, Chantilly Etch
230 _____ #3011/40 Carmen 10" Flower or Fruit Center (Flying Lady Bowl), (slight tilt to right), Rare
231 _____ #1238 Crystal 12" Keyhole Vase, Rosepoint Etch
232 _____ #3077 Gold Krystal 1-oz. Cordial, Cleo Etch
233 _____ #3900/124 Crystal 7" 2-Compartment Relish, Candlelight Etch
234 _____ #1238 Crown Tuscan 12" Keyhole Vase, Gold Encrusted Rosepoint Etch (minor fleabite to foot)
235 _____ #8 Crystal Everglade 12" 3-Footed Belled Bowl
236 _____ #3400/52 Crystal 5" Butter and Cover, Wildflower Etch (scratches)
237 _____ #3105 Amber Pressed Rosepoint Tall Sherbets (6)

- 238 _____ #440 Moonlight Blue Pristine 10" Star Bowl
239 _____ #3130 Crystal Bell, Portia Etch
240 _____ #65 LaRosa Caprice 11" 4-Footed Handled Oval Bowl (1 foot is repaired)
241 _____ #173 Crystal Satin 12" Center-Handled Oval Sandwich Tray, Decalware Flower Décor
242 _____ #1321 Crystal 28-oz. Footed Decanter (collar chip) & (5) #7966 2-oz. Sherries, GE Martha Etch, Unusual
243 _____ #865 Lt. Emerald Decagon Cups and Saucers, signed (large chip 1 cup), (6 sets)
244 _____ #3011/13 Crystal Statuesque 1-oz. Nude Brandy, Optic Bowl
245 _____ #300 Moonlight Blue Caprice 6-oz. Low Sherbets (4)
246 _____ #3135 Gold Krystol 6-oz. Tall Sherbet, Gloria Etch
247 _____ #1447 Amethyst 8" Vase, Aero-Optic, partial large Cambridge label
248 _____ Cambridge 250ml. Laboratory Beaker/Flask with cut graduations, signed, Original Cambridge Box
249 _____ #3122 Heatherbloom 3-oz. Cocktails, Crystal Stem and Foot (3)
250 _____ #787 Peach-blo 8"H Footed Aquarium/Vase, #738 Etch (interior scratches)
251 _____ #63 Ivory 6-1/2" Tall Comport
252 _____ #2699 Buzz Saw Nearcut Nappies, signed (6); #2631 Marjorie Nearcut Berry Creamer, signed
253 _____ #3011/9 Amethyst Statuesque 3-oz. Nude Cocktail, Crystal Stem and Foot
254 _____ #637 Bluebell 3-1/2" Candlesticks (pair)
255 _____ #1066 Royal Blue 2-oz. Sherry, Crystal Stem and Foot
256 _____ #1205 Gold Krystol 64-oz. Jug (no lid), #739 Etch
257 _____ #317 Mandarin Gold 5-oz. Georgian Tumblers (base chip on 1), (4)
258 _____ P.671 Crystal Pristine 6" Ice Tub, Firenze Etch (stained)
259 _____ #2651 Feather Nearcut Punch Bowl, Base, and (10) Cups, signed (chip on 2 cups), (set)
260 _____ Rubina 10-1/4" Vase, Block Optic (mostly red color)
261 _____ #3400/1185 Crystal 10" 2-Handled Bowl, Gold Encrusted Rosepoint Etch, Gold Trim wear
262 _____ #3135 Willow Blue 8-oz. Footed Tumblers, Apple Blossom Etch (factory flaw on 1 foot), (4)
263 _____ #197 Amber 6-oz. Tall Cruet, Original Stopper, Silver Overlay of Cameos and Basket
264 _____ #3400/62 Crystal 8" Luncheon Plates, Wildflower Etch, Gold Trim (4)
265 _____ #1084 Peach-blo Decagon 13" Service Tray, signed (minor scratches)
266 _____ #3600 Crystal 1-oz. Cordial, Cut Marquis
267 _____ #1528 Pistachio Crackle 10-1/2" Bud Vase, Cambridge label
268 _____ #500 Crystal Pristine 6-1/2" Candlesticks, Rosepoint Etch, Hard To Find (pair)
269 _____ Helio 8" Tall, Deep Comport
270 _____ #24 Crystal Caprice 9-1/4" Dinner Plates (3)
271 _____ 1958 Cambridge Glass Company Original Catalog and Price List
272 _____ #1238 Crown Tuscan 12" Keyhole Vase, Gold Encrusted Portia Etch
273 _____ SS#46 Royal Blue 7-1/2" Shell Flower Holder (minor stain inside, scratches), Rare
274 _____ W73 Milkglass Mt. Vernon 10-oz. Tumbler
275 _____ #1595 Blue I 8" Candlesticks (pair)
276 _____ #509 Crystal 8-1/2" Two-Kid Figure Flower Holder
277 _____ #3790 Crystal Low Sherbets, Cut Lynbrook (6)
278 _____ #1045 Lt. Emerald 13" Swan, Style I, signed
279 _____ #9 Heatherbloom Mt. Vernon Urn and Cover
280 _____ SS#11 Windsor Blue 7" Nude Seashell Comport, signed, Hard To Find
281 _____ #513 Lt. Emerald Satin 13" Draped Lady Figure Flower Holder (cracked in bottom)
282 _____ #276 Amber 10" Footed Bud Vase, #517 Early Wildflower Etch
283 _____ #3797/27 Ebon 6" Square Bowls, (1)-Gold D/Birds, (1)-Plain
284 _____ #2 Crystal 5" Rooster Muddlers (8)
285 _____ Dark Amber Jenny Lind 4-1/2" Rose Bowl, Cambridge label
286 _____ #3110 Peach-blo 4-oz. Cocktails, Crystal Twist Stem and Foot (6)
287 _____ #3400/38 Crystal 80-oz. Ball Jug, Optic, and (6) Matching 12-oz. Tumblers (chips on 2), (set)
288 _____ #3400/54 Amber Cups/Saucers (chip 1 cup), (7 sets) & #3400/68 Amber Sugar and Creamer, all signed
289 _____ P.575 Crown Tuscan 9" Cornucopia Vase, Gold Encrusted Rosepoint Etch (pinhead nick)
290 _____ #3797/26 Carmen Cambridge Square 11-1/2" Cake Plate
291 _____ #3400/647 Gold Krystol Decagon 3-Lite Candlesticks, #747 Brettone Etch (pair)
292 _____ #2631 Marjorie Nearcut Cruet, signed
293 _____ #968 Lt. Emerald 2-Piece Cocktail Icer, #731 Rosalie Etch
294 _____ #3900/136 Crystal 5-1/2" Comport, Rosepoint Etch
295 _____ #3105 Forest Green Pressed Rosepoint 1-oz. Cordial
296 _____ #3400/45 Crown Tuscan 12" 4-Toed Bowl, D/1007/8 Gold Silkscreen (gold missing), Crown Tuscan stamp
297 _____ #3400/38 Amber 80-oz. Ball Jug, Optic, Crystal Handle (scratches)

- 298 _____ #3400/149 13-oz. Steins; (2)-Crystal, (2)-Forest Green-(pinhead nick on 1)
- 299 _____ #92 Crystal Mt. Vernon Ice Bucket with Chrome Handle
- 300 _____ #120 Crystal Chelsea Violet Vase with Floral Engraving (slight lavender tinge)
- 301 _____ #3121 Crystal 3-oz. Cocktails, Rosepoint Etch (5)
- 302 _____ Carrara 7-1/2" Tall Comport, 7-1/2" Across with Rolled Edge (hard color to find)
- 303 _____ SS#31 Crown Tuscan 8" 4-Footed Oval Shell Dish, Gold Trim
- 304 _____ #507 Lt. Emerald Rose Petal Jar and Cover, Aero-Optic
- 305 _____ #925 Carmen Round After-Dinner Cups and Saucers, Gold Interiors, signed (3 sets)
- 306 _____ #22 Crystal Caprice 8-1/2" Plate, Sample Gold Silkscreen Decoration
- 307 _____ #119 Forest Green 7" Across, Crystal Handled Basket, 11" Tall, signed
- 308 _____ Jade 9-3/8" Vase/Candlestick, Silver Band and Sponged White Gold Decoration
- 309 _____ #1043 Mandarin Gold 8-1/2" Swan, Style III (scratches)
- 310 _____ #3500/161 Crystal 8" Low Footed Plate, Gold Encrusted Wildflower Etch
- 311 _____ #1040 Mandarin Gold 3" Swan, Style III
- 312 _____ #1341 Royal Blue 1-oz. Cordials (6)
- 313 _____ #559 Peach-blo 8" Plate, Chrysanthemum #2 Etch, signed
- 314 _____ #3797/76 Cambridge Square Salt and Pepper Shakers
- 315 _____ W76 Milkglass Mt. Vernon 4" Candlesticks (pair)
- 316 _____ P.555 Crystal Pristine 8" Salad Plates, Rosepoint Etch (also etched in center), Hard To Find (4)
- 317 _____ #245 Amber Caprice 5-1/2" Vase
- 318 _____ A56 Today Crystal 5-oz. Tumblers, Tahoe Blue Stem (2)
- 319 _____ #3400 Milkglass Sugar and Creamer in Brass Farber Holders
- 320 _____ #3400/4 Crown Tuscan 12" 4-Footed Flared Bowl, Charleton Decoration and label (gold missing)
- 321 _____ #319C Carmen Georgian Candy Box and Cover
- 322 _____ #1327 1-oz. Cordials/Favor Vases; Pink, Mocha, Forest Green, Moonlight Blue, Pistachio, Amethyst, Gold Krystal, and Tahoe Blue, all with Cambridge labels
- 323 _____ #1040 Carmen 3" Swan, Style III
- 324 _____ #3400/1 Amber 13" Bowl and #3400/646 Decagon 5" 1-Lite Candlesticks, Apple Blossom Etch (set)
- 325 _____ #107 Lt. Emerald 76-oz. Pitcher (no lid), Martha Etch, signed (handle chip/crack, inside scratches)
- 326 _____ #1715 Stackaway Ashtray Set on Chrome Stand; Royal Blue, Amber, Forest Green, Amethyst
- 327 _____ #870 Willow Blue Decagon 11" Center-Handled Sandwich Tray, #727 Etch, Gold Trim
- 328 _____ #3400/1185 Amber 10" 2-Handled Bowl, Gold Encrusted Apple Blossom Etch, Cambridge label
- 329 _____ #518 Peach-blo 8-1/2" Draped Lady Figure Flower Holder
- 330 _____ #3011 Forest Green Statuesque 7" Cupped Nude Comport, Gloria Etch, Rare
- 331 _____ #111 Moonlight Blue Caprice 8" 4-Piece Salad Dressing Set, Crystal Ladles
- 332 _____ #3400/1176 Gold Krystal 8-1/2" Square Salad Plates, Apple Blossom Etch, signed (6)
- 333 _____ #24 Azurite 9-1/2" Bowl (deep)
- 334 _____ #883 Peach-blo Square Ashtray, Hunt Scene Etch
- 335 _____ #1201 Carmen 2-1/2-oz. Georgian Tumblers, 2 signed (chip on 1), (4)
- 336 _____ #2766 Emerald Thistle Nearcut 10" Bowl with Gold, signed
- 337 _____ Ivory Wetherford 8" Master Berry Bowl, and (6) Matching 4" Bowls, Original Cold Painting (set)
- 338 _____ #1321 Amber 28-oz. Footed Sherry Decanter (stained, inside stopper chip)
- 339 _____ P.18 Pristine 2-Piece Cocktail Icers, (1)-Moonlight Blue (tiny nicks), (1)-Pistachio (inside rim nick)
- 340 _____ #1387 Crystal 14-oz. Decanter, Amber Handle and Foot
- 341 _____ #1468 Crystal Salt and Pepper Shakers, Rosepoint Etch
- 342 _____ #168 Peach-blo 10" Center-Handled Sandwich Tray, #704 Etch
- 343 _____ #3400/38 Amethyst 80-oz. Ball Jug, and (2) Matching 12-oz. Tumblers
- 344 _____ #3400/67 Lt. Emerald 12" 5-Compartment Celery and Relish Service, Gloria Etch
- 345 _____ #749 Peach-blo Decagon 6-1/4" Bonbon, #759 7" Plate, Cleo Etch, Gold Trim, signed
- 346 _____ #3400/871 Crystal Ice Bucket with Chrome Handle and Tongs, Elaine Etch
- 347 _____ #3130 Crystal 9-oz. Goblet, Rosepoint Etch, Unusual
- 348 _____ #1040 Emerald 3" Swan, Style III
- 349 _____ W124 Milkglass Caprice 4-1/2" Vase
- 350 _____ #157 Crystal Martha Devised Egg Plates (2)
- 351 _____ #3139 Crystal 1-oz. Cordial, Cut King George
- 352 _____ #3143/39 Crystal 86-oz. Ice-Lipped Pitcher, Gyro-Optic, and (7) non-Cambridge 13-oz. Tumblers, all with Matching Silver Grape Décor (set)
- 353 _____ 1947 Pocket Diary, Special Edition "A Daily Reminder of Important Matters", black with Cambridge logo
- 354 _____ #168 Azurite 10" Center-Handled Sandwich Tray, Black Enamel Encrusted #528 Egypt, Unusual
- 355 _____ #6004 Crystal 8-1/2" Footed Vase, Gold Encrusted Wildflower Etch

- 356 _____ P.418 Crystal Pristine 5-Part Celery/Relish, Rockwell Sterling Floral Decoration, Rockwell label
- 357 _____ #250 Ebony 7-1/2" Comport (deep), Gold Trim wear
- 358 _____ #107 Crystal 22-oz. Overnight Jug and Cover, #695 Etch, Gold Trim
- 359 _____ #1917/78 Mulberry 6" 3-Compartment Candy Box and Cover
- 360 _____ #3103 Crystal 9-oz. Goblets, Emerald Green Stems (2)
- 361 _____ #1703 Crystal 6" Hat, Elaine Etch, Hard To Find
- 362 _____ #3400/100 Crystal 76-oz. Jug, Sterling Overlay Poppies
- 363 _____ #495 Crystal Bouillon Cup and Saucer, Roundware, Blue Enamel Encrusted #715 Willow, Gold Trim wear
- 364 _____ #315 Lt. Emerald 28-oz. Decanter, Blown Stopper, Martha Etch
- 365 _____ W77 Milkglass Mt. Vernon 8" Footed Urn and Cover
- 366 _____ #1123 Crystal 8" Dresden Lady Figure, Satin with Crystal Highlights
- 367 _____ #3900/126 Crystal 12" 3-Compartment Celery and Relish, Cut #1064
- 368 _____ #1066 Royal Blue 7-oz. Tall Sherbets, Crystal Stem and Foot (3)
- 369 _____ #1402/52 Carmen Tally-Ho Ice Pail with Chrome Handle, and Tongs
- 370 _____ #102 Lt. Emerald Stratford 2-Handled Individual Urn Salt Dip, Footed, signed
- 371 _____ P.384 Crown Tuscan Pristine 11" Oval Bowl, Gold Trim
- 372 _____ SS#110 Pearl Mist Seashell 4-1/2-oz. Seafood Cocktails (dolphin stem), Crystal Foot (4)
- 373 _____ #3400/647 Crystal 6" 2-Lite Candlesticks, Diane Etch (pair)
- 374 _____ #3400/45 Carmen 11" 4-Footed Bowl with Fancy Edge, signed
- 375 _____ #693/3000 Crystal 2-Piece Canape Set, Decorated Red Enamel Polo Scene, Hard To Find
- 376 _____ #319/B/2 Carmen Georgian Oval Basket, Carmen Handle
- 377 _____ #1206 Royal Blue 76-oz. Jug, Twist-Optic, and (4) Matching 12-oz. Tumblers (set)
- 378 _____ #1529 Smoke Decanter, Crystal Stopper
- 379 _____ #3400/10 Crystal 10-1/2" Center-Handled Sandwich Tray, Wildflower Etch
- 380 _____ #10 Primrose 7" 3-Footed Bowl
- 381 _____ #3011/9 Carmen Statuesque 3-oz. Nude Cocktails, Crystal Stem and Foot (2)
- 382 _____ #3103 Royal Blue 1-oz. Brandy, Crystal Stem and Foot
- 383 _____ #1040 Peach-blo 3" Swan, Style I
- 384 _____ #1430 Crystal 8" Flip Vase, Apple Blossom Etch
- 385 _____ #2635 Fernland Nearcut Quart Jug
- 386 _____ #3400/71 Royal Blue 3" 4-Toed Nut Cup
- 387 _____ #3500/90 Amethyst Cigarette Torchere, Crystal Stem and Ashtray Foot
- 388 _____ #47 Lt. Emerald 6-3/4" Low Footed Mayonnaise, #517 Early Wildflower Etch, Matching Ladle
- 389 _____ #1119 Crystal Eagle Bookends (pair)
- 390 _____ #1431 Forest Green 8" Hyacinth Vase
- 391 _____ Jade 8" Across Tall Comport
- 392 _____ #1066 Amethyst 6-1/2" Ivy Ball, Crystal Stem and Foot
- 393 _____ #3900/115 Crystal 76-oz. Jug, Chantilly Etch
- 394 _____ #3500/28 Crystal 10" 2-Handled Console Bowl, Silver Overlay
- 395 _____ #506 Crystal Butter Tub and Cover, Rosepoint Etch
- 396 _____ #3500/57 Crown Tuscan 8" 3-Part Candy Box & Cover, Charleton Rose Décor, Charleton label (trim worn)
- 397 _____ #300 Lt. Emerald 6" 3-Footed Candy Box & Cover, Gold Encrusted #732 Etch, signed (gold wear on box)
- 398 _____ #2630 Nearcut 7" Handled Basket, signed
- 399 _____ #3400/11 Amber 3-Piece Mayonnaise Set, Portia Etch, Amber Ladle, signed (foot chip)
- 400 _____ #1448 Crystal 10" Vase, Aero-Optic
- 401 _____ #1236 Amber 8" Ivy Ball, Crystal Keyhole Stem and Foot



ONLY QUESTIONS - NO ANSWERS

By Frank Wollenhaupt

As you read this the New Year will have started. In real time, I'm writing this about two weeks before Santa delivers all that Cambridge glass to all you good little girls and boys.

Well, as CHICKEN LITTLE said.....the sky is falling, the sky is falling. Not really, it's just the end of the year and time to catch up on a few open questions. It seems like it was only a few weeks ago that the "Moldy Brothers" gave their talk at the convention.....boy how time flies.



Frank arriving at the Museum for the parade

We had a really great time at the "Dickens". Lots of candy was passed out to the children lining the street. We had a hard time keeping Rich Bennett from stealing the candy from the little kids. The float looked great this year. Cindy and her crew changed it around and did a super job. We had the old float for several years and needed something new. We enjoyed some great food after the parade.

I did spend some time talking with Lynn Welker about the nude candlesticks. He believes that all the sticks that had locks for the bobèche started out as four lock and were ground down at the factory to make them two lock. He has been looking into some new factory information trying to see where they might have put in a change order to change the mold. So far he hasn't found anything.

I received a question this month dealing with butter dishes. The member's question is: "Is there any difference between the round and square handled butter dishes? Aside from the fact that one has a round top and one has a square top, why does Replacements value one more than the other???" When I first read the question, I thought he was asking about the round butters against the oblong 1/4 lb ones. Anyone got a thought?



Another member has a question about Shrimp Icers..... "How can you tell if the insert is original or does it matter??? Did Cambridge make them? These 4 have a flat bottom and that's the only thing I can describe about them." Anyone have several inserts for comparison? I do believe that Cambridge made them but I don't know how to tell ours (Cambridge) from Heisey, Fostoria or any other company.

How about a question and a photo from Illinois..... "Do you know what company used this Cambridge item and then made the plastic top that fit it?" I do not. However I believe that Cambridge probably sold another company the bottoms and they then made the top. Celluloid (type of plastic) was very popular in the 30's and 40's for dresser items. Does anyone have this item in a complete set?

Another nude question from the Columbus area..... "What about Moonlight/Willow Blue 3011 candlesticks? The lady bowl already exists!" This question is in reply to my story a month or two ago about nude sticks with matching flying lady bowls. Does anyone have the 3011 (nude) candlestick with moonlight or willow blue tops? If you have them, take a photo and share it with us.

I have had another report of a small 3" smoke swan.....that makes two. Stand up and be counted if you own one.....let me know.

Well, that's about all for this month. Did anyone receive a Cambridge gift from Santa? If you did, share the good news with us. Email Frank at fewvic303@sbcglobal.net.

Recent Find



Portia etch 3400/107 pitcher with an Acorn finial lid

November Program - "Cambridge Arms"

By Lorraine Weinman

One of the most popular NCC events is the November program and quarterly meeting and this year was no exception. On Saturday, November 8, over 70 members convened in Cambridge, Ohio, at the Cambridge Country Club. Earlier in the day, many arrived at the Museum to take part in a mini flea market of Cambridge Glass. David Ray organized this event and suggested that members should bring glass to sell. The auditorium at the Museum was filled with vendors and buyers. It was larger than ever!



This year's program topic was "Cambridge Arms". Many of the tables had center pieces demonstrating the versatility of Cambridge Arms for decorating a table. These were assembled by members showing their creativity. Others in attendance had brought examples which were placed on the main display table along with examples that Lynn Welker had brought from the Museum. With the opportunity to visit and view the program glass, people arrived prior to the dinner. After the annual November meeting, Lynn Welker took the floor to lead the program.



As always, Lynn's presentation was very interesting. It was an interactive presentation. He started from the bottom and worked his way up with an introduction of lines that led into the Cambridge Arms line rather than in numerical order. The Pristine line was very important in this respect. Lynn started by talking about the individual pieces that make up the Cambridge Arms. He showed examples of many of the vases in varying sizes and shapes, pointing out that many of them predated the actual Cambridge Arms unit. Some of these vases appeared in the 1927 catalog.

The first actual Cambridge Arm was a four-light candle arm that came out in 1947. The first were very plain and there was nothing in the middle when they were first produced. They then went to the acorn arm with the little acorn in the middle so they were not so plain. In 1952 they were re-tooled. Lynn also explained that they were shown using a flower frog on top of the Arms and suggested that it could be used for a baby shower with flowers arranged all around it. A booklet was available showing how this could be done. He went on to discuss the vase arms and the sizes of vases used. This arm came out in 1949. The peg nappy was the next item to come out in the line in 1949. In 1950 they introduced the peg nappy with the candle well which was to be used with a bird, candle or a peg vase in it. These were generally used in the top center of the Cambridge Arms.

Lynn went on to discuss variations that came out and showed some of the more rare pieces. He showed how the hurricane could be used with a larger nappy that was introduced several months later. He discussed the differences between the Fenton and Cambridge nappies, pointing out that they were larger and did not have the little beaded ribbing that Cambridge had. Lynn showed different styles of nappies and particularly the rare blown nappy that came out in 1951.

The next item was the large peg vase. He described the little gaskets that were used to hold the items in the wells with a tighter fit. Several

Pristine bowls were included in the line and helped lift the center pieces up off of the table. In 1950 the peg blue jay came out which came from the old blue jay flower frog which had been destroyed. They came in a variety of colors but are extremely rare. He then described some associate pieces like the peg plate and the peg nappy relish. They really were not part of Cambridge Arms, but they were used there. Bobeches were then discussed as a way to dress up the arms.

The Cambridge Arms booklet shows how you can "build" your Cambridge Arms. Lynn demonstrated some possible ways to do this. Some could be quite high and others low and closer to the table. He then drew everyone's attention to the center pieces that different members brought and how they had built theirs. Some used candy, flowers and nuts. Some were in bowls to raise them up and others were flat on the table. They were very different in appearance. What fun to play with and be creative!

This was an excellent presentation. The program was videotaped and hopefully it will be available so that all the glass examples, facts and details of Lynn's presentation can be shared. There was a wealth of information given and wonderful examples were shown to illustrate what there is to learn about this line.

Thanks to David for arranging and to Lynn and all the contributors for adding to our knowledge regarding this beautiful glass.



**Coming to Chicagoland,
The Largest & Depression-36th Annual Elegant
& Depression Glass Show.
See all the Colors & Patterns,
Own a Piece of American History!**

**March
28th & 29th
2009**

Sponsored by
The 20-30-40 Glass Society of Illinois
P.O. Box 856, La Grange Illinois 60525
Website: WWW.20-30-40society.org

March 28th & 29th 2009
Saturday 9 am - 5 pm Sunday 10 am - 4 pm
Concord Plaza **Midwest Conference Center**
401 West Lake St. **Northlake, Illinois 60164**

Admission \$8.00 Per Person
\$7.00 with this card - Limit 2

Free Parking with shuttle bus to front door
Crystal Repair; Glass Identification; Reference Library; Door Prizes.
All attendees will be processed as associate members for this event.

Study Group Reports

Study Group #13

Miami Valley Study Group

President Frank Wollenhaupt called the MVSG meeting to order at 4:25 p.m. on Saturday, September 6, 2008, at the MVSG's annual picnic at the wooded grove behind the Lewisburg United Methodist Church in Lewisburg, Ohio.

This is our 2nd year enjoying a picnic at this location. It was a perfect fall day with sunshine and a high in the mid seventies. We had a record turnout with 18 members attending. As you could imagine, we had an abundance of food. We were delighted to share some of our covered dishes with a wedding party in the church that had a few more guests than expected.

Dues are due. Please have them for the October meeting. Larry Everett informed us he is now the *Crystal Ball* E-Bay editor. Larry would appreciate the "E-Bayer's" among us giving him a heads up when something really special is up for auction. As Larry puts it, "Another pair of eyes can't hurt." Larry is also going to head up a Rose Point display in the Museum this December. Larry is asking those of us with extensive collections or who have a rare item or so, to contact him if you are willing to lend glass for the display.

It is that time of the year when MVSG elects new officers for the 2008-2009 term. It is our pleasure to announce that Diane Gary is our new president. Diane has been a member of the Miami Valley Study Group for at least 10 years. Diane tells me she remembers being recruited by Fred Schaefer when she stopped at his booth at the Springfield, Ohio Antique Show and asked if he had any Chantilly. Diane's major collection is Chantilly, although recently she has started collecting nudes and a few "Golf Ball" #1066 stems for her husband, Ernie who is an avid golfer. Our other officers remain the same: Vester Dupree, Vice President; Will Acord, Secretary and Mac Otten, Treasurer.

David Rankin is going to move our MVSG web page to a new Internet Service Provider. It will be free to us for the next two years. We all agreed our new website will focus more on pictures of glass we have brought in and highlights of some of our programs rather than meeting notes and other dated material. We believe these topics will of much more interest to persons interested in Cambridge. David found a photo album program that works well. He demonstrated it to us at the picnic. We will see more of it at the October meeting. We will keep you updated.

After the business meeting we had our "Summer Finds" program and then enjoyed all that good food. After our meal, we lit the bonfire and did what we like to do best, talk about glass—what else?

PROGRAM: Summer Finds.

Our members brought several pieces of glass they acquired over the summer. They are: a #509 "Two Kid" 9" flower holder in Moonlight, a #1371 Ebony Bridge Hound, a Pistachio Bridge Hound, a #1468 Rose Point oval individual salt & pepper set, a Rose Point #3400/115 13oz tumbler, a Rose Point #1528 10" blown vase, a #7606 Marjorie Crème de Menthe, a #124 10" Chantilly dinner plate, a #3900/161 Chantilly footed oil, a #3900/100 Chantilly 5oz oil, a #7801 Chantilly cocktail, a #1066 Willow Blue cocktail, a 3500/152 Chantilly 11" 2 handled 4 compartment celery & relish, a #1066 Diane ashtray, a #3011 Statuesque 3 oz cocktail with crystal stem and amethyst bowl, a cut Wild Rose cordial with a Today stem, a #3122 Diane cordial with a crystal stem and Mocha bowl, a #3130 crystal foot and emerald bowl cordial with the #706 Majestic etching.

Will Acord, Secretary



l-r Marjorie Farlow, Larry & Susan Everett.
Larry is checking out the Diane cordial.



President, Diane Gary showing
two Chantilly oil bottles.

Study Group #17

The Columbus Wildflowers

On Thursday, October 2, 2008, the Wildflowers met at the home of Linda and Bryan Roberts at 7:00 pm. After enjoying some great conversation and a wonderful array of Italian themed hors d'oeuvres, topped off with homemade pumpkin cake, we spent the rest of the evening in a photo session of groupings of Cambridge glass. One of the ways we felt the Wildflowers could help to raise money for the club would be to produce some postcards to sell at the Museum, so we grouped together many different subjects and colors of Cambridge, trying to put together desirable and delightful postcard pictures. Bryan very graciously helped us with his photographic equipment, and we will send all the results to Helen to see if some of them would work well.

So, the evening was long even though the minutes are short this time, and hopefully you will get to see the photos we took on postcards for sale at the Museum.

The Wildflowers do not meet in November due to the quarterly meeting in Cambridge, so our next meeting will be the Christmas party / robber gift exchange at the home of Rose MacConkey on December 4th. New members in the Columbus, Ohio area are always welcome and can contact either Linda Roberts at lrobert2@columbus.rr.com or Barbara Wyrick at bwyr@ee.net

—respectfully submitted by Barbara Wyrick, Secretary

National Cambridge Collectors, Inc.

Quarterly Meeting, November 8, 2008

President, Ken Filippini, called the November Quarterly Meeting to order at 7:02PM on Saturday, November 8, 2008. The meeting was held at the Cambridge Country Club with 60 members in attendance. After the meeting was adjourned, Lynn Welker led an informative program on Cambridge Arms.

Rick Jones moved, second by Mike Strebler, to waive the reading of the minutes from the August Quarterly Meeting and accept them as printed in the Crystal Ball. Passed.

Treasurer's Report – Mike Strebler

Mike provided a financial report through September 30, 2008. At that time, NCC had \$65,145 in the Endowment Fund, \$31,124 in the Unrestricted Fund, and \$10,167 in the Temporarily Restricted Fund. Cash assets total \$106,436. At the end of September, NCC's expenses are \$1,508 ahead of budget and Mike predicts the expenses to be \$4,642 ahead of budget by the end of the year. NCC currently has no debt. Some of the major expenses for the year were the \$25,000 mould loan payoff, \$3,000 salesman kit, and \$2,000 trophy. A budget for 2009 was approved at the November Board Meeting. Mike feels strongly NCC will have a surplus budget in 2009 and extra monies will be placed into the Endowment Fund.

Acquisitions – Lynn Welker

Lynn noted the recent acquisition of a trophy that was presented to A.J. Bennett by all the salesmen from the Cambridge Glass Factory. The trophy possesses the names of all the salesmen. The Trophy is on display in the Museum. From the same estate, several pieces of paper material were also acquired. One of the major acquisitions was a complete 1949 catalog.

Auction – Lynn Welker

Lynn reported that Squeek and Dorothy Reiker along with Jack and Elaine Thompson would begin unpacking glass on Sunday, November 9. The March Auction will be held on Saturday, March 7, 2009. Over 700 lots were consigned, so the Auction Committee was able to select several very nice pieces. The auction listing will be printed in the January issue of the Crystal Ball. Squeek and Dorothy Reiker will be stepping down as Auction Chairs this year.

Convention – Sharon Miller

The 2009 Convention is scheduled for the fourth full weekend in June. This year's theme is "A Cut Above" which will highlight the many beautiful cuttings produced by the Cambridge Glass Company. The hours for the 2009 Glass Show have changed. On Friday the show will be open from 12:00PM until 5:00PM and on Saturday from 11:00AM until 4:00PM. In order to encourage dealers to participate in Convention activities, dealers will not be charged a registration fee. Watch the Crystal Ball for further details. Nancy Finley and Elaine Thompson will be assisting Sharon with the 2009 Convention.

Crystal Ball – Helen Klemko

Helen thanked everyone who has contributed to the Crystal Ball. She still needs more material to maintain a top quality publication. The next color issue of the Crystal Ball is scheduled for February 2009. Photographs of auction glass will be featured.

Facilities – Carl Beynon

Facilities are in good shape. We will soon need to repair the asphalt in the parking lot at the museum. It will be a major project.

Glass Show – Ken Filippini

Ken reported he is actively seeking new dealers. Currently we have scheduled three new dealers for 2009.

Long Range Planning – Rick Jones

Rick gave a brief history of the Long Range Planning Committee, which originally began in 1994. In 2001, Mike Strebler created the Dawn Report, which is responsible for much of what we are currently doing. The Board will meet Sunday morning at 8:00AM where they will set the foundation for where we want to see ourselves in 5 to 10 years.

Membership – Ken Filippini

Ken received a resignation letter from Linda Adkins. Freeman Moore will be contacted to fill the vacancy. Ken asked the membership to keep Linda in your thoughts.

Museum – Cindy Arent

Cindy reported she feels 2008 was the best year ever for the Museum. Our museum workers, Betty and Sandy, were thanked for their great service. Several tours are scheduled for the Holiday Season. NCC will be participating in the Christmas Parade this year on Saturday, November 29. A potluck will be held at the museum after the parade.

Nominating Committee – Tarzan Deel

Tarzan reported that Ken Filippini and Rick Jones are up for re-election. With the resignation of Linda Adkins who was up for re-election this year, Freeman Moore will be asked to fill the vacancy through June 2009. If Freeman wishes to continue as a board member, he will need to run in 2009. Let Tarzan know if you are interested in running for the board.

Programs – David Ray

David thanked everyone for attending the November Quarterly Meeting and Program. He also gave special thanks to those members who brought glass for the program and to Lynn Welker for leading tonight's program on Cambridge Arms. The program for the November 2009 will focus on Smoking and Related Items.

Study Groups – Ken Filippini

Ken thanked Ken and Judy Rhodes for their years of leadership of the Study Group Committee. Ken and Judy will be stepping down this year.

New Business –

Rick reported there was a motion at the March 2009 Board Meeting to change the rules for electing a Life-Time Member. The rule will be changed from a 100% approval of the Board to a 75% approval of the Board. This change will be printed in the January issue of the Crystal Ball and voted upon at the March Quarterly Meeting.

Also, Rick reported there was a motion presented at the November 2009 Board Meeting to eliminate Associate Memberships. Under our new program, everyone is considered a Member. The change will be printed in the January issue of the Crystal Ball and voted upon at the March Quarterly Meeting.

The new membership fee pertains to households. The new fee will be \$35 per household. Only adults will have voting privileges.

Frank Wollenhaupt moved, second Ken Rhodes, to adjourn the November Quarterly Meeting. Passed.

Designs of the Past

That Dazzle Today!

South Florida Depression Glass Club
American Glass, Pottery, Dinnerware Show and Sale

February 7 & 8, 2009
Sat. 10am-5pm & Sun. 10am-4pm
War Memorial Auditorium • 800 NE 8th St • Ft. Lauderdale, FL

S. FL Depression Glass Club
8608 NW 57th Court
Coral Springs, FL 33067

Join us for the South Florida Depression Glass Club's 35th Annual Show and Sale featuring 30 prominent dealers from around the country specializing in American elegant, depression, and mid-century modern glass, pottery, and dinnerware plus so much more.

Unique décor and tableware from the 1920's and beyond!

Special guests: Barbara & Jim Mauzy, authors of many books on depression glass and vintage collectibles.

Admission: \$6.50
(50¢ off with this card)

- > Glass Repair
 - > Door Prizes
 - > Snack Bar
- Directions: I-95 to Sunrise Blvd. East, turn South on US 1 for 2 blocks
Information: 305-884-0335 or www.SFDGC.com



**Sparkling Clearwater
Depression Glass Club**



Presents

30th Annual Show & Sale

Featuring

**DEPRESSION ERA
GLASS, CHINA & POTTERY**

Sat, February 14, 2009 9:00AM - 5:00PM

Sun, February 15, 2009 10:00AM - 4:00PM

**The Harborview Center
300 Cleveland St**

Downtown Clearwater

**GLASS REPAIR
FREE ID**

FREE PARKING

BEST SHOW ON FLORIDA'S WEST COAST

**Complimentary
Admission**

Admit one person

**HOURLY DOOR PRIZE
PICKLES PLUS CAFÉ**

GLASS DISPLAY

For information 727-725-2069

or on the web at ClearwaterDepressionGlassClub.com

Portion of profits benefit Pinellas County Libraries

Dates to Remember

NCC Events

2009 NCC Auction

Saturday, March 7, 2009

2009 Convention

June 24-28, 2009

If you know about any upcoming glass shows or other glass events, please pass the word on to us at least six to eight weeks before the show dates. These listings are free of charge.

Glass Shows

January 23-25, 2009

Sanlando DG Show

Sanford, FL

Call: (407)298-3355/(407)855-5502

E-mail: milliesglass@webtv.net

February 14-15, 2009

Washburns San Antonio Show

Live Oak, TX

Call: (210)599-0635

E-mail: washburnk@aol.com

February 20-22, 2009

Houston Depression Glass Show

Rosenberg, TX

Call: (713)410-4780/(214)734-7216

E-mail: mmxglass@aol.com

February 28, 2009

Green River Glass Show & Sale

Kent, WA

Call: (253)852-5250

E-mail: kayswede@msn.com

March 7-8, 2009

Garden State Depression Glass Show & Sale

Edison, NJ

Call: (609)240-3765

Email: thelegantable@verizon.net

March 14-15, 2009

Metroplex Depression & Elegant Glass Show

Grapevine, TX

Call: (817)875-6292

Info: www.dfwglass.com

March 21-22, 2009

Heart of America DG Show & Sale

Independence, Missouri

Call: (816)373-3907

E-mail: dkuhnert@comcast.net

Museum Volunteers - November & December

Gary Patterson	Steve Bennett	Larry Everett
Sandi Rohrbough	Sharon Miller	Susan Everett
Betty Sivard	Joe Miller	Ken Rhoads
Carl Beynon	Lorraine Weinman	Judy Rhoads
Cindy Arent	Jack Thompson	Kay Marchant
Janice Hughes	Elaine Thompson	Mark Votaw
Marybelle Teters	Squeek Rieker	Jeff Ross
Nancy Guegold	Dorothy Rieker	Jill Ross
Margene Osterberg	Linda McClain	Sharon Bachna
Sally Slattery	Judy Momirov	Shirley Beynon
Lynn Welker	Frank Wollenhaupt	Sue Cowden
Lindy Thaxton	Vicki Wollenhaupt	Mike Arent
Rich Bennett		

Many, many thanks to our volunteers!!!!



Museum Christmas Tree adorned with Cambridge glass

Classified Ads - Reach over 1,000 avid collectors of Cambridge Glass

Advertising Rates:

1/8 page \$15 1/4 page \$20
 1/2 page \$30 Full page \$50
 (plus \$5 per photograph)

Electronic submissions should be emailed to ncccrystalball@charter.net. Use Word or PageMaker. Mailed submissions and all payments should go to PO Box 416, Cambridge, OH 43725. Deadline is 10th of preceding month. Ads must be paid in advance. *Show listings are FREE; send info to PO Box or e-mail address 60 days before event.*



Dealer Directory - \$24 for 12-months, size limited by box (see below). Includes listing on NCC website.

Remember...

When writing to these dealers, please include a self-addressed, stamped envelope.



DEALER DIRECTORY



THE DEGENHART PAPERWEIGHT AND GLASS MUSEUM, INC.

P.O. Box 186
 Cambridge, OH 43725-0186

Intersection of US 22 & I-77
 Phone 740-432-2626

Dee and Tony Mondloch
 Phone: 850-747-8290 glass01@knology.net
 1609 Clay Ave. Panama City, FL 32405

Precious & Few

Tiffin and Duncan & Miller Glassware,
 Other Elegant Glass, Antiques, Collectibles

Shop: www.apreciousfew.com



**YOUR AD COULD BE HERE
 REACH THOUSANDS OF
 COLLECTORS
 ONLY \$24 PER YEAR**



Deborah Maggard, Antiques

Specializing in Cambridge Glass,
 American Hand-Made Glass & Victorian Art Glass

We buy one piece or entire collections.
 Please contact me at 440-247-5632
debbie@deborahmaggardantiques.com

P.O. Box 211 • Chagrin Falls, OH 44022

SCOTTY'S ANTIQUES

Elegant Glassware of the Depression Era
 Mainly Cambridge and Florence Ceramics
 Retirement: Selling all inventory
 at reduced prices

John & Peggy Scott
 Scotland Ridge Farm
 PO Box 1001
 Aurora, MO 65605

(417) 678-0624
scottjnp@aol.com



John **Burlingame** Betty

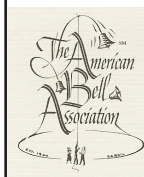
Visit our booth (B-6) in
DELILAH'S

301 1st Street Sanford, FL 32771
 Antiques, glass, pottery, collectibles, etc.
 cell 386-212-7121 tel 407-330-2272

Max Miller

Elegant Glassware • Books • Fiesta
 ...and more

THE MARKET PLACE
 (713) 467-0450 - BUS 10910 OLD KATY RD.
 (713) 461-1708 - RES HOUSTON TX 77043
MMXGLASS@aol.com

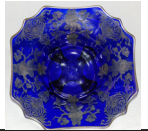


The American Bell Association International, Inc.

7210 Bellbrook Drive
 San Antonio, TX 78227-1002
www.americanbell.org



DEALER DIRECTORY



When writing to these dealers, please enclose SASE

Daugherty's Antiques
Jerry and Shirley
Antiques & Collectibles-Mostly Glass

www.daughertys-antiques.com
 email: sdaugh2515@daughertys-antiques.com

Shows & Mail Orders 2515 Cheshire North
402-423-7426 (evenings) Lincoln, NE 68512

Milbra's Crystal Buy & Sell

Replacement and Matching
 Milbra Long (817) 645-6066
 Emily Seate (817) 294-9837
 PO Box 784
 Cleburne TX 76033

E-mail: longseat@sbcglobal.net
www.fostoriacrystal.com

*Specializing in
 Cambridge,
 Fostoria, Heisey
 and others*

THE GLASS URN

456 West Main Street, suite G
 Mesa, AZ 85201 480-833-2702
 480-838-5936
 602-524-1109

Mail Order Open Shop

CAMBRIDGE, FOSTORIA, HEISEY, etc.

ALADDIN LAMP BOOKS

Kerosene Lamps 1884-1940
 New book 2007
 Bill & Treva Courter
 brtknight@aol.com

3935 Kelley Rd. Phone 270-488-2116
 Kevil, KY 42053 FAX 270-488-2119

Fostoria Glass Society of America
 Traveling Ambassadors
Ralph & Joyce Rider

For info: 817-545-5856
 E-mail: r.rider@sbcglobal.net

B&H ANTIQUE MARKETPLACE
 3739 Highway 29 North
 Danville, VA 24540
 (434) 836-4636

Cambridge • Heisey • Duncan • Fostoria
 Open Thur-Sat 11:00 to 5:00 (Seasonal hours apply)

Glass Menagerie Antiques
 Your Website for quality Glass from
 the 20's, 30's, 40's & 50's.
www.glasstresurechest.com

BAKER FAMILY MUSEUM
 805 CUMBERLAND ST.
 CALDWELL, OHIO 43724
 740-732-6410

bakermuseumnellbaker@msn.com

Wed & Thurs 9-4; Fri - Sat 9-5



CRYSTAL LADY

1817 Vinton St. Omaha, NE 68108
Bill, Joann and Marcie Hagerty
 Shop 402-341-0643 Home 402-391-6730

Specializing in Elegant Glass & Collectibles
www.crystalladyantiques.com

Storck's Antiques
Rick & Joyce
 Antiques & Collectibles
 Fenton, Imperial, Heisey & Cambridge
 Storck1@aol.com (763-477-6415)
 Booth 11 & 12 in the Antique Mall
 12820 Main Street, Rogers, MN

 **Mother Drucker's**
Penny Drucker
 Specializing in Elegant Glassware
 Shows & Mail Order

PO Box 18087 (775) 851-7539
 Reno, NV 89511 (888) MDRUCKER
www.motherdruckers.com

CRYSTALLINE COLORS
 Cambridge • Fostoria • Elegant Glass

Riverfront Antique Mall
 New Philadelphia, OH (I-77, exit 81)
 Booth #'s 626 and 616

Lynne R. Franks 216-661-7382

GLASS FROM THE PAST
 Maureen Gillis



www.glassfromthepast1.com
 email: maureen@glassfromthepast1.com

Cherished Collectibles

Shopping 24 hours in our online store
 Glassware, Figurines, Collectors' Plates

www.cherished-collectibles.com
 Elegant and Depression Era Glass

Old Morgantown Glass Collectors Guild
 Glass Museum
 709 Beechurst Ave.
 Morgantown, WV 26505
www.oldmorgantown.org
 Wed - Sat 10-3 Sun noon - 5:00
 For more info: (412)217-2083

VIRTUALATTIC AT THE GLASS CHALET
 SPECIALIZING IN ELEGANT DEPRESSION ERA GLASS

Sandra L. Bridwell-Walker PO Box 3448
 William P. Walker Cleburne TX 76033-3448
 Phone: 817-202-0940
 Sandy's Cell: 817-559-0328 www.virtualattic.com
 virtualattic@sbcglobal.net
 Bill's Cell: 817-357-7084 theglasschalet@sbcglobal.net

GREEN ACRES FARM
 2678 Hazelton Etna Rd.
 Pataskala, OH 43062
 (State Route 310 North)

Sat & Sun 1-7 pm 740-927-1882
 Antiques, Crystal Glass & Collectibles

THE GLASS HOUSE ANTIQUE MALL
 Furniture, Pottery, Glass
 Antiques and Collectibles
 I-70 Exit 146, East on SR 40

8825 E. Pike
 Norwich OH 43767 TEL 740-872-3799

GATEWAY ANTIQUE MALL, INC.
 JUST NW OF MINNEAPOLIS-ST.PAUL, MN
 Next to Super 8 in Rogers, MN
 (I-94/101 intersection)
 Multi-Dealer
 7 days; 10am - 6pm • 763-428-8286
 Tera & Jim Marsh, Owners
www.gatewayantiquemall1.vpweb.com

ISAACS ANTIQUES
 (740) 826-4015

See our booths in Penny Court Mall in
 Cambridge and at White Pillars Antique Mall
 (Route 40, one mile west of
 I-70 Norwich, OH • Exit #164)

PENNY COURT MALL
 637 Wheeling Avenue
 Cambridge, Ohio
 100 Booths 15,000 sq ft

HOURS: Daily 10-6 Sunday Noon-5
 Closed: Easter, Thanksgiving, Christmas

Call for other holiday hours 740-432-4369

MARGARET LANE ANTIQUES

2 E. Main St. New Concord, OH 43762
 Lynn Welker (740) 826-7414

Cambridge Glass Matching Service
 Hours: Mon-Fri 10-12 AM, 1-5 PM
 or by appointment

Our House Antiques

 Linda and David Adams
 Las Vegas, NV 
 1-800-357-7169
www.OurHouseAntiques.com
 email: David@OurHouseAntiques.com

National Cambridge Collectors, Inc.
PO Box 416
Cambridge OH 43725

website: www.cambridgeglass.org
e-mail: ncccystalball@charter.net

Scotty Dog Bookends

Frosted Cobalt



**\$110/pair
Plus \$12 shipping &
handling; sales tax if
applicable.**

Cobalt



**\$100/pair
Plus \$12 shipping &
handling; sales tax if
applicable.**

Crystal Opalescent



**\$100/pair
Plus \$12 shipping &
handling; sales tax
if applicable.**

Send orders to:

NCC • PO Box 416 • Cambridge, OH 43725

OHIO RESIDENTS PLEASE ADD 7% SALES TAX

**Please include your name, complete mailing address
and your phone number or e-mail address.**

Payments by check or Money Order only, payable to NCC.