



Cambridge Crystal Ball

Published monthly (except July) by National Cambridge Collectors, Inc. to encourage and report the discovery of the elegant and boundless product of the Cambridge Glass Company of Cambridge, Ohio

Issue No. 402

December 2006

Warmest wishes for a
joyous holiday season!



LATE BREAKING NEWS

**Original Cambridge Molds Acquired by NCC.
See Page 3 for details.**

National Cambridge Collectors, Inc.

PO Box 416 Cambridge, OH 43725-0416

Membership

Patron: Single \$22; with 1 Associate \$25

•Additional Associate memberships are available at \$3 each.

Benefactor - Century: \$100

•Includes membership for Master Member and unlimited Associate Members, plus Century Club membership for Master Member.

Benefactor - Mardi Gras: \$200

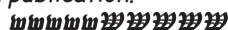
•Includes membership for Master Member and unlimited Associate Members, plus Century Club membership for all members (limit of two plaques in Museum).

Benefactor - Japonica: \$500

•Includes membership for Master Member and unlimited Associate Members, plus Century Club membership for all members (limit of two plaques in Museum).

President's Circle: \$1,000

•Includes membership for Master Member and unlimited Associate Members, plus Century Club membership for all members (limit of two plaques in Museum). Also includes Convention registration for two adults and one copy of each new NCC book upon publication.



Associate Members must be at least 18 years of age and live in the same place of residence as the Master Member. Associate Members have full voting rights, but do not receive an additional copy of the newsletter.

Address Changes

Please send address changes to:

Membership - NCC
PO Box 416
Cambridge, OH 43725

or by e-mail to:

lin26@hocking.net

Board of Directors

Linda Adkins	Cindy Arent	Shelley Cole
Larry Everett	Ken Filippini	Rick Jones
Sharon Miller	Mark Nye	David Ray
Mike Strebler	Lorraine Weinman	Lynn Welker

Officers & Committee Chairs

President	Rick Jones
Vice-President	Ken Filippini
Secretary	David Ray
Treasurer	Mike Strebler
Sergeant-at-Arms	Larry Everett

Acquisitions Committee	Lynn Welker, Chairman
Archives Committee	Mark A. Nye, Archivist
Budget & Finance Committee	Mike Strebler, Chairman
By-Laws Committee	Alex Citron, Chairman
Crystal Ball	Alex Citron, Executive Editor
Endowment Committee	Rick Jones, Chairman
Facilities Committee	Carl Beynon, Chairman Joe Miller
Grants & Fundraising Committee	Sharon Miller, Chairman
Long-Range Planning Committee	(vacant)
Membership Committee	Linda Adkins, Chairwoman Freeman Moore, Development Chairman
Museum Committee	Cindy Arent, Chairwoman
Nominating Committee	Ken Filippini, Chairman
November Program Committee	David Ray, Chairman
Projects Committee	Bill Hagerty, Chairman
Publications Committee	Mark A. Nye, Chairman
Publicity Committee	Lorraine Weinman, Chairwoman
Study Groups	Judy Rhoads, Advisor
Technology	David Adams, Webmaster Alex Citron, ebay Store
Auction Committee	Dorothy Rieker Squeek Rieker Lynn Welker
Convention Committee	Shelley Cole, Chairwoman
Glass Show & Sale	Mary Beth Hackett, Co-chairwoman Joy McFadden, Co-chairwoman
Glass Dash	Larry Everett, Co-chairman Susan Everett, Co-chairwoman
Books & Merchandise Fulfillment	Linda Adkins

National Museum of Cambridge Glass



Located at 136 S. 9th Street in
downtown Cambridge, OH

Closed for the season.
SEE YOU IN APRIL

Contacts

NCC Museum [open April thru October only]

(phone) (740) 432-4245
(fax) (740) 439-9223

Rick Jones, President e-mail: Caprice0@aol.com
David Ray, Secretary e-mail: westervillesh@hotmail.com
Alex Citron, Crystal Ball Editor e-mail: apcpenguin@adelphia.net



President's Message

Back Where They Belong

This has certainly been one of the most interesting months, perhaps even historic, in the annals of Cambridge Glass. Some valuable parts of our history, now reside once and for all, in Cambridge.

This is a complicated story to tell as I don't have a lot of the early history here and there are some confidences that need to be protected. But let me try my best. At the time of the closure of the Cambridge Glass Company, most of the assets (all?) went to the Imperial Glass Company where they resided for 20+ years.

When Imperial closed, there was a real scramble to salvage and preserve the Cambridge Glass materials that were resident there. It's important to remember that this occurred within the first ten years of our fledgling organization and we were not nearly as organized or as financially solvent as we are today.

Our club's leadership and membership did an incredible job to secure as many of the glass making materials, notably

molds, as they could. In some cases, I've been told, they took parts of molds so that items could not be reproduced. They also secured glass making tools and historical materials. Their "haul" currently resides in our Storage Building in Cambridge and I stand in awe any time I view how much they were able to preserve.

But, we couldn't get all of it. For a variety of reasons and circumstances, some of these Cambridge materials wound up in private hands.

One major place many Cambridge pieces went was to Summit Art Glass in Northeast Ohio. For many years Summit once again made items that came from original Cambridge molds. Again, all this predates me, but I do know that as a fledgling Caprice collector, I was sometimes confused by the Summit Caprice and what was original.

Fast forward to this year, the Summit molds, quite surprisingly, became available on the market. This was big news.

NCC became aware of this and through a third party at another glass company expressed our interest in reuniting Summit's molds with ours in the Storage Building. Unfortunately, this pursuit did not bear fruit.

Enter a devoted Cambridge member. This person did a lot of research on the Summit situation and learned much of their perspective on history. He decided to pursue this opportunity privately. He found them to be exceedingly cooperative and forthcoming. They forged a productive relationship and began trying to construct a transaction.

As this process neared the end, NCC was brought into the confidence. This person had kept me personally in the loop as a third party sounding board as conversations progressed. It was very clear to all that NCC was not a party in this transaction.

continued on page 10

The Crystal Ball

PO Box 416 Cambridge, Oh 43725
e-mail: NCCCrystalBall@aol.com

Advertising Rates

1/8 page \$15 1/4 page \$20
1/2 page \$30 Full page \$50
(plus \$5 per photograph)

Classified Ads: 10 cents/word, with a \$2.00 minimum.

Electronic submissions should be e-mailed to NCCCrystalBall@aol.com. Use Word, PageMaker or Adobe PDF. Mailed submissions and all payments should go to PO Box 416 Cambridge OH 43725. Deadline is 10th of preceding month. Ads must be paid in advance. *Show listings are FREE; send info to PO Box or e-mail address 60 days before event.*

Staff

Executive Editor Alex Citron
Research Editor Les Hansen
ebay Report John Peterson
Advertising Manager Jeannie Moore
Circulation Sharon & Joe Miller
.....

Editorial Policy

Research materials submitted are subject to review by the Research Editor or other experts. All submissions are subject to editing for length, accuracy and conformity to norms of style, spelling, punctuation and grammar. No advertising will be accepted on behalf of candidates for NCC or other elected office, nor for or against any legislative matter before the NCC Board or membership.

An electronic version of this newsletter is available via e-mail. Just contact us at NCCCrystalBall@aol.com to start your free subscription. You will continue to receive the paper version as well.

Dealer Directory is \$24 for 12-months, size limited by box (see page 11). Includes listing on NCC website.

Artwork must be submitted in electronic (jpeg, tiff or bmp) format, unless special arrangements have been made in advance with the editor. Photos must be minimum 300 dpi.

National Depression Glass Association Puts Collection on Display

by Cindy Arent

During the November quarterly meeting weekend, Linda Bredengerd and Sarah VanDalsem (*pictured below*), NDGA Board members, arrived in Cambridge from Kansas with many boxes of glass from the NDGA National Collection. This collection is now on display in the Museum Feature Display Room and will continue through the 2007 season.

Linda and Sarah worked for two days unpacking and placing the glassware in the display cases. They would have finished sooner, but NCC members in Cambridge for the quarterly meeting were interested and asked them many questions about the glass. The display looks fantastic, as well as

being very informational. Members are already learning from it!

Many thanks to the National Depression Glass Association for providing their National Collection for display at the museum. Also, thank you to Linda and Sarah for making the long trip to Cambridge to complete the display. Due to the efforts of the NDGA, members and museum visitors will be able to enjoy the beauty of the glassware and learn something about the companies that manufactured each piece.

Photos of the entire display will be available on the NCC website in January.



Another November Display

by Georgia G. Otten

Members of NCC who attend the November quarterly meeting in Cambridge, Ohio, are always treated to a fine educational program, and that program is always supported by a glorious display of Cambridge glass! This year was no exception. Also during November, there was *another* Cambridge display in a different Ohio city, Huber Heights.

The Miami Valley Study Group holds its monthly meetings at the public library in Huber Heights, Ohio. This library has the largest volume of traffic of any library in the county system.

Hoping to get the *Cambridge* name out to the general public and also hoping to gain new members for both NCC and our study group, we asked to place a display at the library. While the available cabinet did not lend itself to a glorious display of Cambridge glass, it was most suitable for a paper display. Treva Peckenpaugh, library staff member, scheduled the month long display for us. When Diane Gary and her husband, Ernie were putting the display together, Treva watched with great interest and commented on the fact that she was raised in Caldwell, Ohio. She was quite pleased to see the pamphlets and other ephemera all relating to the Cambridge Glass Company. We hope others coming into the library will look at the display and perhaps become interested in learning more about Cambridge glass.

Miami Valley's Diane Gary and the study group's display at the Huber Heights Library.



LYNN WELKER

2 East Main Street
New Concord, OH 43762

(740) 826-7414
(740) 705-1099 - evenings & weekends

Prices each, UPS extra

CAPRICE, CRYSTAL

#126 12" 4-part relish	50.
#170 Club; #172 Spade (ea)	40.
#300 9 oz Tall Goblet (8)	15.
#310 12 oz Tall Tumbler (8)	25.
#183 80 oz Ball Jug Pitcher	75.
#31 2-piece Cake Salver	145.
#117 Cruet & Stopper	25.
#42 9" Oval Tray or Celery	15.

CALL FOR MUCH MORE CAPRICE

CAPRICE, MOONLIGHT BLUE

#300 6 ox Tall Sherbet (8)	30.
#300 5 oz Footed Juice (8)	30.
#300 4.5 oz Claret [rare] (4)	150.
#106 8" 3-piece Mayo Set	75.
#53 10.5" Crimp Bowl, 3-footed	70.
#2 7 oz Tall Sherbet (5)	25.
#67 Low Candlesticks (pr)	50.
5" Unlisted Ball Vase	150.
#93 2.5" Indiv. Nut Dish (2)	35.

MUCH MORE BLUE CAPRICE, CALL

DAFFODIL

#3779 12 oz. Iced Tea (5)	25.
P306 6" Candy Box & Cover with Cut Knob	85.
#532 6" across Tall Comport	60.
#3400/141 76 oz Doulton Jug	275.

DIANE

#3122 9 oz Goblet (8)	22.
#3400/14 7" across Tall Comport	60.
#477 9" Corn or Pickle Dish	40.
#968 2 pc. Shrimp Cocktail Icer	45.
#3122 Tall Blown Comport	45.

ELAINE

#7966 2 oz Sherry (6)	45.
#3500 10 oz Tall Goblet (8)	25.
#3121 Tall Blown Comport	45.
#3900/19 2 pc Mayo Set	45.
#3400/638 3-lite Candlesticks (pr)	75.

ROSEPOINT

#3500/15 ind. Sugar & Creamer	40.
#3121 12 oz Iced Tea (8)	35.
#3121 3.5 oz Wine (8)	50.
#498 5.5" 12 oz Tumbler (4)	60.
#3900 Cup & Saucer (8)	30.

ROSEPOINT (continued)

#3900/24 10.5" Dinner Plate (8)	140.
#3500 10 oz Goblet, tall (6)	35.
#968 2 pc. Shr Cocktail Icer (2)	60.
#1338 3-lite Candlesticks (pr)	125.
#3900/75 4-pc Epergne	100.
#1321 28 oz Footed Decanter	350.
#3500/112 15" Relish	125.
#3400 Cup & Saucer (8)	30.

MUCH MORE ROSEPOINT, CALL

WILDFLOWER

#3400/67 12", 5-part Relish	45.
#3900/115 13 oz Barrel Tumbler (6)	38.
#3400/176 7.5 Plate (7)	12.
#3500/148 6" Comport	40.
#3121 1 oz Cordial	50.

CALL FOR MORE WILDFLOWER

COLORED CAMBRIDGE

Royal Blue

#1237 10" Keyhole Vase	100.
#1338 Cigarette Holder	50.
Mt. Vernon Stein, signed	50.

Azurite

Console Set, gold-encrusted Laurel Wreath decor	100.
--	------

Heatherbloom

Apple Blossom Goblet	85.
----------------------	-----

Forest Green

Tally-Ho Stein	30.
----------------	-----

Willow Blue

Everglade Sugar & Creamer (set)	60.
---------------------------------	-----

Crown Tuscan

#6004 10" Vase	45.
#1236 Keyhole Ivy Ball	50.

Smoke

Georgian Basket	45.
-----------------	-----

Milk Glass

Caprice Cruet & Stopper	100.
-------------------------	------

Mulberry

Caprice Cup	50.
-------------	-----

Tahoe Blue

Pencil Dog	85.
------------	-----

Carmen

#3500 tall Cigarette Holder	75.
-----------------------------	-----

CAMBRIDGE ARMS PARTS

#1563 4-Candle Arm (2)	18.
#628 Candle Base (2)	14.
#1536 5" Peg Nappy (6)	10.
#1633 5" Peg Vase (6)	20.
#19-1 Bobeche/8 prisms (3)	35.
#2355 7" Vase (3)	25.
#2355 8" epergne Vase (2)	25.

MORE PARTS, CANDELABRA...CALL

FLOWER FROGS

Peachblo 8.5" Draped Lady	150.
Amber Satin 8.5" Draped Lady	175.
Lt. Emerald Two-Kid	175.
Amber Satin 6" Bashful Char	175.
Peachblo Satin 8.5" Dr Lady	165.

NUDES

Amethyst Cocktail	90.
Carmen Cupped Comport	250.
Pistachio Cocktail	150.

CALL FOR MORE NUDES

SWANS

Emerald 8.5", style III	125.
Emerald 6.6", style III	100.
Emerald 3", style III	35.
Mand Gold 8.5", style III	125.
Mand Gold 3", style III	35.
Crown Tuscan 8.5", style III	125.
Peachblo 8.5", style I, signed	140.
Peachblo 6.5", style I, signed	100.
Royal Blue 3", style II, signed	125.
Crystal 10.5", style III	125.
Crystal Punch Cup (9)	40.
Ebony 10.5", style I, signed	275.
Gold Krystol 3", style II, signed	40.
Mocha 3", style II, signed	85.

Minutes of the August Quarterly Meeting

The August Quarterly Meeting was held at Theo's Restaurant in Cambridge, OH. Once all dessert orders were taken at 1:10 PM, president Rick Jones called the meeting to order. Nineteen members were present. Lynn Welker moved and Mark Nye seconded to dispense with the reading of the minutes from the June Quarterly Meeting. A vote was not taken to approve the minutes since they have not yet been printed in the Crystal Ball.

Treasurer's Report: Mike Strebler gave a detailed analysis of the current financial status of NCC. The cash accounts total \$124,609.49 that represents an increase of \$21,217.17 over July 2005. The major contributors to this increase are the sale of the green Scotties, the success of the mini auction, the Symphony model being used for membership, and a gift of nearly \$2,000 in stock. The mortgage stands at \$34,000 with a payment of \$7,600 due in September. The total in the Endowment fund is \$54,321.38 that represents an increase of \$5,888.18 over one year ago. In the future, new Century Club members will receive their annual membership with their contribution.

Acquisitions: Lynn Welker indicated several nice donations have been given to the museum this year.

Endowment: Rick Jones will be working to get information to members concerning the Heritage Society.

Facilities: Carl Beynon stated the museum is in good condition, but the roof at the Storage Building is beginning to rust. A quote was obtained from Flemming & Hartley, but their recommendation was to hold off on repairs and replace the roof when necessary. The estimate for painting the roof was \$3,200 plus labor.

Membership: Linda Adkins noted NCC has 1,033 members. The

membership consists of 705 master, 316 associate, 5 lifetime, and 7 honorary members. Follow-up letters will be mailed to those who have allowed their membership to expire.

Museum: Cindy Arent reported Linda McLain has been trained to work at the museum. Off-street admissions are up this year. Sales at the gift shop are up considerably due to generous donations made by NCC members. The museum committee attended a tour operator's convention in Cleveland, OH. They gave a power point presentation to tour operators promoting the NCC Museum.

Program: David Ray noted that Lynn Welker has graciously volunteered to lead the November Program this year. Lynn will share his knowledge on silver overlay, white gold, and platinum decorations. The November Program will be held on Saturday, November 4 at the Holiday Inn in Cambridge, OH. Also, at around 2:00 PM on Saturday, NCC members will have the opportunity to sell some glassware. Members will be permitted to bring up to 10 items to sell. The sale will be held at the museum. There will be no charge for this event.

Auction: Lynn Welker said auction consignment lists will be accepted from September 1 through October 1. Members are encouraged not to consign damaged items. The auction committee will have the option of not accepting damaged items.

Convention: Convention will be held the fifth weekend in June this year.

Glass Dash: Dealers at the Glass Dash will have the option of donating unsold merchandise to the museum. They will be given a donation letter for tax purposes.

Publicity: Lorraine Weinman noted that museum flyers have been distributed to strategic Ohio Tourist Information Centers located in rest areas and welcome centers. We still

have an advertisement in the AAA magazine that earns AAA members \$1 off admission to the museum. Lorraine will contact websites to host advertising for the NCC convention. Also, the new Glass Pass is out with some new partners added to the Pass.

Publications: Mark Nye reported the committee that worked on the new Colors Book is not satisfied with the color quality of the first printing. Mark will contact Collectors Inc and try to work out all the details prior to a second printing. In the meantime, the board voted to sell the new Colors Book for \$17.99 to members and \$19.99 to non-members. Anyone who purchased the book at full price from NCC can obtain a refund of the difference. NCC receives a royalty payment for \$1.50 for each Colors Book sold by Collectors Inc.

Ken Filippini moved and Mary Welker seconded a motion to adjourn the meeting.

Respectfully submitted,
David B. Ray
Secretary



Inside the Cambridge Glass Company

by Cindy Arent

The National Cambridge Collectors, Inc. has received a special gift from William C. Orme. The donation included original photographs taken inside The Cambridge Glass Company, as well as copies of other documents. Photographs relating to the "mixing of the batch", shoveling the batch into the pot inside the furnace and the etching department have already been framed and are on display in the museum.

When we received the photographs, former employees of The Cambridge Glass Company were asked for help identifying people in the photos. Harold Conrath and Bill Boyd came to the museum and were able to provide names for several people. We will also be contacting workers from other departments at the factory to help in the identification process.

Since many of our members are not able to visit the museum, I will submit a photograph with a brief description each month to the Crystal Ball.

Everyone will then be able to learn about how Cambridge Glass was manufactured.

This month we will begin with a photograph taken in July, 1949 of Orié Mosser, who was the Plant Superintendent, inspecting Furnace #2. Orié Mosser is the man on the right. Standing beside him on the left is his son, Tom Mosser. Records state that The Cambridge Glass Company opened in 1902 with only one furnace, although three were planned. The second furnace was built in 1903 and the third was added in 1905.

If you look closely at the photograph, you will notice two large openings in the floor which is how the heat was transferred into the furnace. When former Cambridge Glass Company employee Bill Boyd studied the photo, he said that the openings would get plugged up with glass. Bill's father would be given the job of going in to chip the glass out of the opening.

Both Harold Conrath and Bill Boyd agreed that Orié Mosser was a good man. When a crack would develop on the top of the furnace, he didn't want any of his men to get injured fixing the problem. Orié would wrap himself in wet cardboard and climb to the top of the furnace to fix the crack with wet clay.

There were fourteen arched openings around the furnace. The clay pot sat just inside each opening. Groups of glassworkers worked outside the furnace around each of the openings gathering molten glass from the pot.

We have enjoyed learning from the photographs and what former workers have to tell us about them. We sincerely thank Mr. Orme for giving us the opportunity to learn more about The Cambridge Glass Company. Next month, you will see and learn about the clay pots.

Happy Holidays from your museum volunteers and staff!!



ebay Report

by John Peterson

This report is provided to keep members up with what's happening on the world's largest Internet Auction site. It is not meant as an educational tool, nor as a pricing guide, and we cannot guarantee the accuracy of listings herein.

NUDES

- A most beautiful Carmen nude stemmed #3011/6 Roemer sold on 11/19 for a hefty price of \$1,500. Just try and find one though.
- AND, from the same seller and also on 11/19, a Royal Blue nude stemmed #3011/6 Roemer did NOT meet reserve with a final bid price of \$1,225. Stunning pieces.
- November 17th was the sale date of a most elegant and regal #3011/26 nude stemmed amber bud vase. It sold for \$725. So beautiful and not a speck of cloudiness. Now where is that piece in crystal etched RosePoint?
- A jaw-droppingly beautiful #3011 nude stemmed flared comport in Crown Tuscan with applied Ebony foot sold on 11/1 for a fantastic \$1,575. Weepingly gorgeous.

CAPRICE

- Friends, e-bay prices for Caprice are still down, but the interest is still high. Buy now before they soar again.
- On 11/12, a pair of crystal Caprice #300 Parfaits sold for \$66. I can't remember parfait's selling for such a low price.
 - AND, if you thought that was enough to make you cry, on 11/12 another pair of crystal Caprice #300 Parfaits being sold by a different seller, did NOT get an opening bid of \$49.95. No reserve on either pair. That's part of the problem. But could it also be that they are more plentiful than once thought? Makes you wonder, I know.
 - A beautiful #179 Moonlight Blue Caprice small ball jug sold on 11/6 for \$205. That's a gorgeous piece.
 - A fabulous and extremely hard-to-find blue Caprice Alpine #112 twin salad dressing bowl sold for a very reasonable \$300 on 11/13. What a fabulous piece in Alpine.
 - #1338 Emerald Green Caprice 3-light candleholders just keep going down and down in price. On 11/16 a

pair, yes pair, sold for \$70 and not on a buy-it-now, but a regular auction format. Granted, there was an admitted small chip on the base, but still, \$70? I remember just a few year's ago these were at least \$250 a pair. Wow!

- A very hard-to-find #239 crystal Caprice vase sold on 11/18 for an ultra-low \$57. It has a small rim chip and perhaps that deterred people from bidding. Crystal Caprice collectors know how difficult it is to find most crystal vases. Even more so than in blue. A small rim chip wouldn't have deterred this collector!

FLOWER FROGS

- On 11/5, a beautiful crystal Mandolin Lady flower frog sold for \$200. Such a fabulous flower frog.
- A most stunning 8½" Moonlight Blue Draped Lady flower frog sold for \$175 on 11/19.
- A most unusual 13" Light Emerald Draped Lady flower frog with the base frosted, sold on 11/12 for \$163. Very nice looking.

SWANS

- On 11/2 a beautiful 10" frosted swan sold for a beautiful \$202. Very nice.
- November 12th was the sale date of a beautiful Ebony black 6½" swan. So hard to find that size. It sold for \$44.

ROSEPOINT

- A most fantastic P.101 cocktail shaker and lid etched RosePoint with Wallace sterling silver foot sold on 11/16 for \$359. It was simply a joy to gaze upon such a pristine piece as that. Truly faboir.



- On 11/4 a very rare, yet incomplete, #1329 mustard jar and lid sold for a walloping \$760. If completely correct, I would've expected it to bring even

more. It was incomplete in the fact that the lid, although the correct lid, was unetched. The bottom was etched with RosePoint. Although you could see in the photos that the lid was not etched, there was no mention of the lid whatsoever in reference to the etching. There were a few attempts via e-mail to alert the seller to amend the auction to reflect that the lid should be etched to be complete. This was in case the seller was not aware that the lid should be etched. Although other questions posed to the seller were posted to the listing, the inquiries about the unetched lid were not even answered. E-bay seller's who do not answer pertinent information such as this when asked, should send up a red-flag to bidder's about bidding on that or any item from that seller. Imagine how the buyer will feel when they find out the lid is supposed to be etched!

- A most magnificent #3500/139 square honey dish and cover etched RosePoint sold on 11/9 for \$282. Just try to find that piece in any other etching besides RosePoint and Elaine. Fiendishly difficult. So gorgeous.
- A very difficult-to-find pair of 3-light #3400/638 candleholder's etched RosePoint sold on 11/9 for an amazingly low \$56. If people only knew how hard these are to find.
- A fabulous set of 5 of the #3105 pressed AND etched RosePoint goblets sold on 11/14 for \$710. One had a tiny sliver flake. So beautiful.

OTHER ETCHES

- November 16th saw the sale of a most fabulous #3400/175 cocktail shaker with metal lid etched Wildflower and yes, gold-encrusted with gold trim. The gold in the etching and the trim was immaculate and the piece really stood out. It sold for a handsome \$325.
- \$688 was the hammer price for a fabulous pink Gloria #3900/116 ball jug and 6 of the #3400/38 tumbler's to match. Two of the tumbler's had minor chips. This glorious set sold on 11/12.

- An extremely rare #3400/135 bowl and equally rare 3400/192 candleholder's in Gold Krystol with Diane etching did NOT sell once on 11/4 for a final bid price of \$204 nor a second time on 11/18 on a \$495 buy-it-now selling format. Wow! I have seen one #3400/135 etched bowl in 13 years other than this one in Diane. People need to wake up to the rarity of these pieces being offered!



- November 8th was the sale date of one of the most gorgeous pieces of glass I personally have ever seen. It was a breathtakingly beautiful #1066 cardholder in amber with crystal stem and cupped foot and was etched with the sumptuous Diane pattern and then gold-encrusted into the etching and gold trim. The seller mentioned a hint of gold wear but I couldn't see any! It sold for a respectable \$585. WOW!
- I was in awe on November 5th with the final hammer price of a most beautiful #3130 cordial in pink with Apple Blossom etching. It sold for a heart-stopping \$256. All the way from the Aloha state, this beauty really made a splash!
- A marvelous, marvelous #1321 decanter etched Elaine and gold-encrusted with gold trim sold on 10/25 for \$224. So absolutely gorgeous with the gold.

- October 26th was the sale date of a fabulous #300 large crystal candy box etched Wildflower and with a Carmen rose-shaped finial. So marvelous. The beauty of this piece is superior. It sold for a very, very palatable \$162. That was a bargain.



MISCELLANEOUS

- A fabulous pair of #1141 Lady Leg bookends sold on 11/5 for a wonderful \$229. These are just so seldom seen.



- October 30th was the sale date of a marvelous, marvelous #1402 Tally-ho line punch bowl set. This set was in Carmen and included the bowl, liner, 12 cups and original, that's right, original #1402/111 Tally-ho punch ladle. The ladle is so difficult to find and many times missing from this set. It had a Carmen handle and the cup part of the ladle was in crystal with the signature rib-and-swag Tally-ho pattern to it. Just fabulous. The final

price was a commanding \$780. Won't finger's be snapped at the table setting this set is presented on this holiday season! Lovely.

- On 11/8, a beautiful Crown Tuscan #3500/42 covered urn lamp with Cambridge Glass gold silk screen application and gold trim all mint, sold for \$791. These lamps are stunning when the gold is all intact and heavy. Wow!

- Most surprisingly, a #1066 blown comport in Crown Tuscan with an applied Ebony foot did NOT meet reserve at the final bid price of \$120 on 11/14. Stated to be in mint condition, those Crown/Ebony pieces are just not seen much at all.

- A fantastic #300 large size candy and cover in Avocado opaque with a gold-encrusted border etching on the lid sold for \$204 on 11/11. I have only ever seen one other candy like this in Avocado, and I bought it! The gold was worn in areas, but still a fabulous feast for the eyes! Simply sumptuous.



**Rosepoint
Collector**

**Looking for
Rare & Unusual
Pieces**

Call:
(888) 470-7539

Green River Glass Show & Sale
 Kent, Washington
FEBRUARY 24, 2007

 For information, call (253) 852-5250 or e-mail kayswede@msn.com

Study Group Reports

The NCC has several study groups; these are the groups currently active and holding regular meetings. Listed below is contact information for these study groups.

If there is no study group in your area and you are interested in starting or joining a new study group, please contact NCC Study Group Advisor, Judy Rhoads at kjrhoads@aol.com.

#13 - Miami Valley Study Group
Miami Valley area, Ohio
Larry Everett
db0098@dragonbbs.com
(937) 675-6491

#14 - The Cambridge Cordials
Cambridge, Ohio
Lorraine Weinman
blweinman@hotmail.com
(330) 966-9376

#15 - North Texas Cambridge Study Group
Dallas area, Texas
Scott Pierce
scottpierce1@msn.com
(817) 427-9510

#16 - Elegant Glass Collectors
PA & NJ
Bill Dufft
billnvon@aol.com

#17 - The Columbus Wildflowers
Columbus, Ohio
Barbara Wyrick
bwyr@ee.net
(614) 291-0361

#20 - South Florida Study Group
Miami, FL
Linda Gilbert
rosepointbabe@aol.com

#21 - Crazy 'bout Cambridge Study Group
Indiana
Beth Sarchet
bethsarchet@bluemarble.net

#15 - North Texas

The North Texas Cambridge collectors converged on Keller, TX for our first regular meeting of the fall. Gwenell and Scott (virtual) Pierce were the gracious hosts on this sunny Texas afternoon. Everyone had a chance to view Gwenell's cream and sugar collection before the meeting began. We also had an informal update on new Caprice additions to their collection.

After informal chatting, it was time to start the business portion of the meeting. Our study group received a cash donation at the NDGA show in support of our efforts. We have sent a "thank-you" and will continue with our education efforts. Freeman and Jeannie Moore circulated handouts and presented some of the highlights from the NCC June 2006 convention. One of our members brought up the Glass Pass. After a quick online check, it was reported that there are 12 participating organizations (8 Ohio, 1 Pennsylvania, and 3 West Virginia). We had a copy of the new Colors II book on hand and everyone agreed about poor quality of the printing.

Our program topic was simply Summer Finds. Boy – our members found all kinds of neat pieces, Cambridge as well as others.

Items included: Caprice blue blown parfait, caprice cake plate in original box, moonlight blue 3143/40 water pitcher and glasses, Rosepoint 3400 cup and saucer with gold trim, 3400 signed dinner plate with apple blossom etching in black,

Cascade cigarette box, several cream and sugar sets, examples of "Fenton Caprice", amber tally ho punch cup, green 1066 water with apple blossom etching, 3777 sherbet with melody cutting, several Fostoria items, and even a vase by Frye.

We made a slight adjustment to our December calendar. It was suggested to have a combined holiday dinner meeting with the Fostoria Glass Society of North Texas on December 10. It was then time to pack our summer finds back into boxes and depart for home. Our next meeting will be at the Waxahachie show at the end of October, a Saturday meeting after the show.

Submitted by Freeman Moore

President's Message

from page 3

As the eleventh hour approached and the asking price exceeded our member's ideal number, the logic of an NCC partnership began to take shape. While we can't be privy to all of the historical relationship issues here, the key priority today, as always, is education and preservation – the hallmarks of our organization that remain ever strong after 32 years.

Our member at the lead shares these ideals and goals. There was clear

recognition of the role these molds play in Cambridge Glass preservation. This person was able to cooperatively conclude a deal with Summit and couldn't be more effusive in praising the family through this whole process.

This past weekend, a small, knowledgeable crew of members from Cambridge itemized, verified, collected and transported the Summit molds to their new home, actually their old home, reunited with the other Cambridge molds already in preservation at our Storage Building.

We are fortunate for members with the sincerity and honesty shown on how this opportunity was approached. Our member never sought to deceive anyone and always sought to find the best solution for everyone. It's a skill I so incredibly admire. And, we look forward to the day when we can heal the old wounds that exist and recognize that we've taken a major step forward here.

These Cambridge molds are back where they belong. We'll have more details in upcoming issues!

The Calendar

If you know about any upcoming glass shows or other glass events, please pass the word on to us at least six to eight weeks before the show dates. These listings are free of charge.

NCC Events

2007 NCC Auction

Saturday, March 3, 2007



2007 Convention

June 27-30, 2007

Upcoming Glass Shows & Other Glass Events

February 16-18:

Superbowl Show of Shows
Rosenberg, TX
Call: (409) 762-4239
E-mail: wnsweeten@sbcglobal.net

February 24:

Green River Glass Show & Sale
Kent, WA
Call: (253) 852-5250
E-mail: kayswede@msn.com

February 24-25:

Arkansas Glasshoppers Show & Sale
Little Rock, AR
Call: (501) 375-0435
E-mail: esthermitchell@msn.com

March 9-10:

Mountain Laurel Glass Show
West Hartford, CT
Call: (860) 643-5353
E-mail: james.dwire@snet.net

March 10-11:

20-30-40 Society's Show
Northlake, IL
Call: (847) 394-2491
www.20-30-40society.org

March 16-17:

Heart of America Glass Show
Independence, MO
Call: (816) 561-4439
E-mail: dishbizz@aol.com

The Latest Merchandise

Logo Patch



This attractive, embroidered Cambridge Logo Patch was produced by the Elegant Study Group to benefit NCC.

It measures 2" by 3.5" and can be ironed or sewn onto almost any fabric.

\$5 each

Educational DVD's

by the Miami Valley Study Group

• **Cambridge Glass & All That Jazz**
Presented at the 2004 NCC Convention; it covers Cambridge Glass patented, introduced or featured in the years 1925 thru 1930. Runs 26 minutes. **\$13.00**

m fl m fl m fl m fl m fl m fl m fl

• **Cambridge Glass: Ladies and All**
Presented at the 2006 NCC Convention; covers the years 1931 and 1932. Runs 38 minutes. **\$18.00**

m fl m fl m fl m fl m fl m fl m fl

• **Special: Both DVD's for one low price**

\$29.00

See Page 12 to Order

Collectors of Carnival Glass

Mark your calendars now!

Tampa Bay Carnival Glass 25th Convention

January 31 - February 3, 2007
Lakeland, Florida

For information, call Janet Knechtel at (705) 377-4814 or (863) 993-2387 [winter months] or e-mail janetkn@amtelecom.net

Book and Merchandise Sales thru the NCC Website are back on-line. To order, go to www.CambridgeGlass.org and click on Members-Only. The current User Name and Password are printed in each issue of The Crystal Ball.

NCC Merchandise

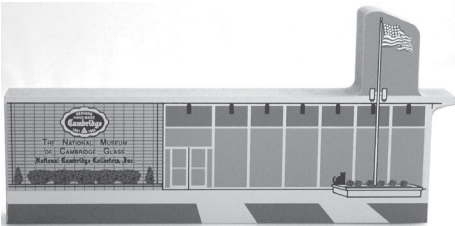
Scotty Dog Bookends



\$112/pair
Cobalt Blue
 includes shipping

m M m M m M m M m M m M m M m M m M

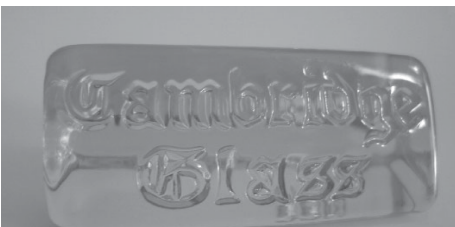
Cat's Meow: NCC Museum



\$20

m M m M m M m M m M m M m M m M m M

Vaseline Prism Sign 2005 Convention Favor



\$15 each

Salt & Pepper Tops

Polycarbonate plastic will fit most Cambridge shakers, such as Rosepoint footed and flat-bottom shakers. They also fit Heisey Rose, Saturn, Plantation, Crystalite and some Orchid. Fit some Anchor-Hocking and Candlewick.



\$6/pair

Order 20 pair (or more) and pay only \$5 per pair.

m M m M m M m M m M m M m M m M m M

NCC Logo Pin



\$5 each

m M m M m M m M m M m M m M m M m M

Comemmorative Tape Measure

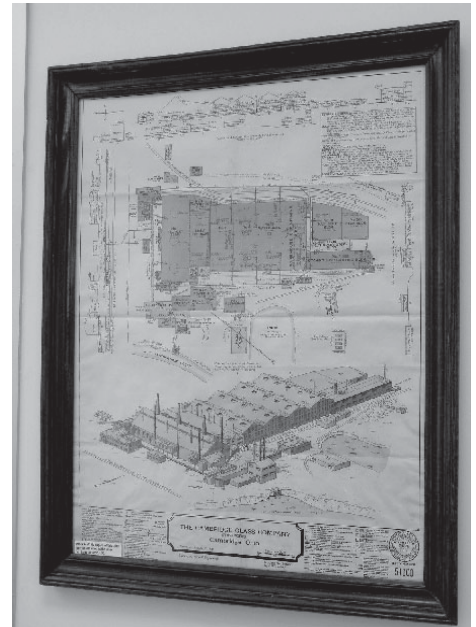
Issued for the Grand Opening of the National Museum of Cambridge Glass



Special...\$1 each

Factory Map and Elevation

Reproduced from the original, which hangs in the NCC Museum



\$12.50 each

m M m M m M m M m M m M m M m M m M

"The Crystal Lady"

Copy of an original Cambridge Glass promotional film; shows the manufacture of a goblet.

VHS or DVD \$15

m M m M m M m M m M m M m M m M m M

"Primrose"

Prism Sign

2006 Convention Favor

\$15



Book and Merchandise Sales thru the NCC Website are back on-line. To order, go to www.CambridgeGlass.org and click on Members-Only.

Send orders to:
 NCC • PO Box 416 • Cambridge, OH 43725

OHIO RESIDENTS PLEASE ADD 7% SALES TAX

Please include your name, complete mailing address and your phone number or e-mail address. Payments by check or Money Order only, payable to NCC

How to Order

SHIPPING/HANDLING:

All items (including books) **except** Scottys:

Total order up to \$6	\$1.50
\$6.01 to \$25.00	\$4.50
\$25.01 to \$50.00	\$5.50
\$50.01 to \$75.00	\$6.50
Over \$75.00	\$8.50

Books for Sale

*Published by NCC • Members receive a 10% discount • **CLICK ON BOOK TITLE TO ORDER THRU NCC WEBSITE***

TITLE		REGULAR PRICE	MEMBER PRICE
1910 NearCut Catalog Reprint	108 pages, paperback with 2004 price guide	\$14.95	\$13.45
NearCut Value Guide	(when purchased separately)	\$3.00	\$2.70
1930-34 Catalog Reprint	250 pages, paperback with 1997 price guide	\$14.95	\$13.45
1930-34 Catalog Index		\$2.00	\$1.80
1949-53 Catalog Reprint	JUST RE-ISSUED	\$19.95	\$17.95
1956-58 Catalog Reprint	160 pages, paperback, no price guide	\$12.95	\$11.65
NEW... Cambridge Colors II	Hardcover with price guide	\$19.99	17.99
Caprice	200 pages, paperback with 2003 price guide	\$19.95	\$17.95
Caprice Value Guide	(when purchased separately)	\$5.00	\$4.50
Decorates	136 pages, paperback, no price guide	\$14.95	\$13.45
NEW... Etchings (2nd Edition)	Now available	\$17.95	\$16.15
Etchings, Non-Catalogued	70 pages, paperback, no price guide	\$12.95	\$11.65
Etchings: Blossomtime	26 pages, paperback, no price guide	\$7.95	\$7.15
Etchings: Candlelight	30 pages, paperback, no price guide	\$7.95	\$7.15
Etchings: Chantilly	44 pages, paperback, no price guide	\$7.95	\$7.15
Etchings: Diane	53 pages, paperback, no price guide	\$7.95	\$7.15
Etchings: Elaine	64 pages, paperback, no price guide	\$9.95	\$8.95
Etchings: Portia	57 pages, paperback, no price guide	\$7.95	\$7.15
Etchings: Wildflower	42 pages, paperback, no price guide	\$7.95	\$7.15
Rock Crystal Engravings	119 pages, paperback, no price guide	\$17.95	\$16.15
Rock Crystal Engravings (Listings)	Companion to above; lists all pieces in all patterns	\$9.95	\$8.95
Rock Crystal 1940 Price List		\$14.95	\$13.45
Rosepoint	94 pages, paperback with 2004 price guide	\$14.95	\$13.45
Rosepoint Value Guide	(when purchased separately)	\$5.00	\$4.50

Other Publications • No discounts:

TITLE	REGULAR PRICE
Glass Candlesticks: Volume I - Akro Agate thru Fenton	\$24.95
Glass Candlesticks: Volume II - Fostoria thru Jefferson	\$24.95
Glass Candlesticks: Volume III - Kanawha thru Wright	\$29.95
Charleton Decorations	\$29.95
1903 Cambridge Catalog Reprint	\$6.00
1927-29 Cambridge Catalog Reprint (with 1996 Price Guide)	\$9.95
1927-29 Value Guide (when purchased separately)	\$3.00
1940 Cambridge Catalog Reprint (unbound, on 3-hole paper)	\$25.00
Binder for 1940 Catalog	\$5.00
Reflections: A History of Guernsey County Glass Production	\$5.00
Cambridge Stemware by Mark Nye	\$19.95
Welker's Volume II (color plates showing pieces from private collection)	\$5.95
The Art of Making Fine Glassware	\$4.00
Glass Animals (2nd Edition)	\$24.95
Kitchen Glassware of the Depression Era (6th Edition) by Gene Florence	\$24.95
Collectible Glassware from the 40's, 50's & 60's (7th Edition) by Gene Florence	\$24.95
Treasures of Very Rare Depression-Era Glass by Gene Florence	\$39.95
Elegant Glassware of the Depression Era (11th edition) by Gene Florence	\$24.95

How to Order by Mail

Send orders to:
NCC • PO Box 416 • Cambridge, OH 43725

OHIO RESIDENTS PLEASE ADD 7% SALES TAX

Please include your name, complete mailing address
and your phone number or e-mail address.

Payments by check or Money Order only, payable to NCC

SHIPPING/HANDLING RATES ON PAGE 12

*Books may also be purchased on the NCC website, in
the Members-Only Section. Major Credit Cards are
accepted only on web purchases.*

See page 2 for address, user name and password.



Stems Without Thorns

As the world's largest supplier of old & new china, crystal, silver and collectibles, Replacements, Ltd. has more than 700 different patterns of Cambridge crystal.

And however much we enjoy selling pieces that were once thought irreplaceable, we love buying them as well. Thanks to people like you, our crystal inventory currently numbers in the hundreds of thousands, and the numbers keep growing every year.

So, if you've been unsuccessfully searching for that elusive piece of Cambridge - or any other type of fine crystal - call us for a free list of pieces available in your pattern. And, if you're looking to sell pieces you currently have, we can help you there, too.

REPLACEMENTS, LTD.

China, Crystal & Silver • Old & New

1-800-REPLACE
(1-800-737-5223)

1089 Knox Road
PO Box 26029, Dept. CB
Greensboro, NC 27420
www.replacements.com



South Florida Depression Glass Club 33rd Annual Show & Sale

*American Elegant & Depression Glass
Dinnerware, Pottery*

February 10 & 11, 2007

**War Memorial Auditorium
800 N.E. 8th Street
Ft. Lauderdale, FL**

Saturday: 10 am - 5 pm

Sunday: 10 am - 4 pm

Admission \$6.50

(50¢ off with this ad)

Directions: I-95 to Sunrise Blvd. East
turn south on US 1 for 2 blocks.

**Glass Repair
Snack Bar • Door Prizes**

Information: (305) 884-0335
fboches@cheshirecatantiques.com

DEALER DIRECTORY

THE DEGENHART PAPERWEIGHT AND GLASS MUSEUM, INC.

P.O. Box 186
Cambridge, OH 43725-0186
Intersection of US 22 & I-77
Phone 740-432-2626

Cherished Collectibles

Shopping 24 hours in our online store
Glassware, Figurines, Collectors' Plates
www.tias.com/stores/chercoll/
cher@cherished-collectibles.com
Elegant and Depression Era Glass

Dee and Tony Mondloch
Phone: 850-747-8290 glass01@knology.net
1609 Clay Ave. Panama City, FL 32405

Precious & Few

Tiffin and Duncan & Miller Glassware,
Other Elegant Glass, Antiques, Collectibles
Shop: www.apreciousfew.com

**YOUR AD COULD BE HERE
REACH THOUSANDS OF COLLECTORS
ONLY \$24 PER YEAR
SEE PAGE 3**

GREEN ACRES FARM

2678 Hazelton Etna Rd.
Pataskala, OH 43062
(State Route 310 North)

Sat & Sun 1-7 pm 740-927-1882
Antiques, Crystal Glass & Collectibles

THE GLASS URN

456 West Main Street, suite G
Mesa, AZ 85201 480-833-2702
480-838-5936

Mail Order Open Shop

CAMBRIDGE, FOSTORIA, HEISEY, etc.

SCOTT'S ANTIQUES

*Elegant Glassware of the Depression Era
Mainly Cambridge and Florence Ceramics
Retirement. Selling all inventory
at reduced prices*



*John & Peggy Scott
Scotland Ridge Farm
PO Box 1001
Aurora, MO 65605*

(417) 678-0624
scottjpp@aol.com

Fostoria Glass Society of America Traveling Ambassadors Ralph & Joyce Rider

For info: 817-545-5856
E-mail: r.rider@sbcglobal.net

John Burlingame Betty

Visit our booth (B-6) in
DELILAH'S

301 1st Street Sanford, FL 32771
Antiques, glass, pottery, collectibles, etc.
cell 386-212-7121 tel 407-330-2272

Max Miller

Elegant Glassware • Books • Fiesta
...and more

THE MARKET PLACE

(713) 467-0450 • BUS 10910 OLD KATY RD.
(713) 461-1708 • RES HOUSTON TX 77043
MMXGLASS@aol.com

VIRTUALATTIC AT THE GLASS CHALET

SPECIALIZING IN ELEGANT DEPRESSION ERA GLASS
PO Box 3448

Sandra L. Bridwell-Walker Cleburne TX 76033-3448
William P. Walker
Phone: 817-202-0940 www.virtualattic.com
Sandy's Cell: 817-559-0328 virtualattic@sbcglobal.net
Bill's Cell: 817-357-7084 theglasschalet@sbcglobal.net


Remember...

When writing to these dealers,
please include a self-
addressed, stamped envelope.

DEALER DIRECTORY

When writing to these dealers, please enclose SASE

DAUGHERTY'S ANTIQUES
Antiques and Collectibles



Specializing in
Depression Era, Elegant and Pattern Glass
Porcelain, Pottery and old books

402-423-7426
www.daugherty-antiques.com
sdaugh2515@daugherty-antiques.com

Jerry and Shirley
Daugherty

Milbra's Crystal Buy & Sell

Replacement and Matching
Milbra Long (817) 645-6066
Emily Seate (817) 294-9837
PO Box 784
Cleburne TX 76033

Specializing in
Cambridge,
Fostoria, Heisey
and others

E-mail: longseat@sbcglobal.net
www.fostoriacrystal.com

BARNESVILLE ANTIQUE MALL
open 7 days, 8 - 5
Nancy and Brian Mayhugh
Owners

202 N. Chestnut St. 740-425-2435
Barnesville, Ohio 43713 3 floors
EXIT 202 OFF I-70 • always buying & selling antiques

ALADDIN LAMP BOOKS
Free History of Aladdin Lamps
Figurine Lamps Wanted
Bill & Treva Courter
brtknight@aol.com

3935 Kelley Rd. Phone 270-488-2116
Kevil, KY 42053 FAX 270-488-2116

THE GLASS CUPBOARD

155 Blake Blvd. (Apt 215B)
Pinehurst, North Carolina 28374

Bob & Marcia Ellis Cambridge Show
910-295-2821 and Mail Order

B&H ANTIQUE MARKETPLACE
3739 Highway 29 North
Danville, VA 24540
(434) 836-4636
www.bhantiqueauctions.com

Cambridge • Heisey • Duncan • Fostoria
Open Thur - Sat 11:00 to 5:00 (seasonal hours apply)

Glass Menagerie Antiques
Your Website for quality Glass from
the 20's, 30's, 40's & 50's.
www.glasstresurechest.com

BAKER FAMILY MUSEUM
805 CUMBERLAND ST.
CALDWELL, OHIO 43724
740- 732-6410
bakermuseumnellbaker@msn.com

Wed & Thurs 9-4; Fri - Sat 9-5

CRYSTALLINE COLORS
Cambridge • Fostoria • Elegant Glass

Riverfront Antique Mall
New Philadelphia, OH (I-77, exit 81)
Booth #'s 626 and 616

Lynne R. Franks 216-661-7382

CRYSTAL LADY
Thurs. - Sat. 11-5
1817 Vinton St. Omaha, NE 68108
Bill, Joann and Marcie Hagerty
Shop 402-341-0643 Home 402-391-6730

Specializing in Elegant Glass & Collectibles
www.crystalladyantiques.com

Storck's Antiques
Rick & Joyce

Antiques & Collectibles • Glass & Pottery
Specializing in Fenton, Imperial & Cambridge
Shows & Mail Orders • Storck1@aol.com
Greenfield, MN 55373 • (763) 477-6415

Mother Drucker's
Penny Drucker



Specializing in Elegant Glassware
Shows & Mail Order

PO Box 50261 (949) 551-5529
Irvine, CA 92619 (888) MDRUCKER
www.motherdruckers.com

Deborah Maggard, Antiques
Specializing in Cambridge Glass,
American Hand-Made Glass & Victorian Art Glass

We buy one piece or entire collections.
Please contact me at 440-247-5632
debbie@deborahmaggardantiques.com

P.O. Box 211 • Chagrin Falls, OH 44022

GLASS FROM THE PAST
Maureen Gillis



www.glassfromthepast.com
email: maureen@glassfromthepast.com

JUDY'S ANTIQUES
Judy Bennett
422 S. Ninth Street (corner of Jefferson)
Cambridge, Ohio 43725

Business (740) 432-5855
Residence (740) 432-3045
CAMBRIDGE GLASS MY SPECIALTY

BRIDGES THRU TIME
Antiques & Elegant Glassware & Collectibles
Member of Greater Houston BBB
Located at Olde Carriage Shoppe
810 2nd Street • Rosenberg, TX 77471

For Web-Storefront and Auctions
Website: http://www.bridgesthru.com
E-mail: imwolf@sbcglobal.net


Mon. thru Sat. 10 - 5:30 • Sunday 12 - 5:30

Bogarts' Antiques

BUY • SELL • APPRIASE • REFINISH • CANE & REED CHAIRS
CLOCK REPAIR

Jack & Sharon Bogart ST. RT. 40
740-872-3514 shop 7527 EAST PIKE
740-826-7439 home NORWICH, OHIO 43767
BOGARTSANTIQUES@CORE.COM

Mary Jane's Antiques
Early American Pattern Glass
Depression Era Items



2653 Burgener Drive (217) 422-5453
Decatur, IL 62521 mjhumes@aol.com

THE GLASS HOUSE ANTIQUE MALL
Furniture, Pottery, Glass
Antiques and Collectibles
I-70 Exit 146, East on SR 40

8825 E. Pike
Norwich OH 43767 TEL 740-872-3799

GATEWAY ANTIQUE MALL, INC.
JUST NW OF MINNEAPOLIS-ST. PAUL, MN
Next to Super 8 in Rogers, MN
(I-94/101 intersection)

Multi-Dealer
7 days; 10am - 6pm • 763-428-8286
ELAINE STORCK, OWNER/DIRECTOR

ISAACS ANTIQUES
(740) 826-4015

See our booths in Penny Court Mall in
Cambridge and at White Pillars Antique Mall
(Route 40, one mile west of
I-70 Norwich, OH • Exit #164)

PENNY COURT MALL
637 Wheeling Avenue
Cambridge, Ohio
100 Booths 15,000 sq ft

HOURS: Daily 10-6 Sunday Noon-5
Closed: Easter, Thanksgiving, Christmas

Call for other holiday hours 740-432-4369

MARGARET LANE ANTIQUES
2 E. Main St. New Concord, OH 43762
Lynn Welker (740) 826-7414

Cambridge Glass Matching Service
Hours: Mon-Fri 10-12 AM, 1-5 PM
or by appointment

Our House Antiques
Linda & David Adams
Las Vegas, NV

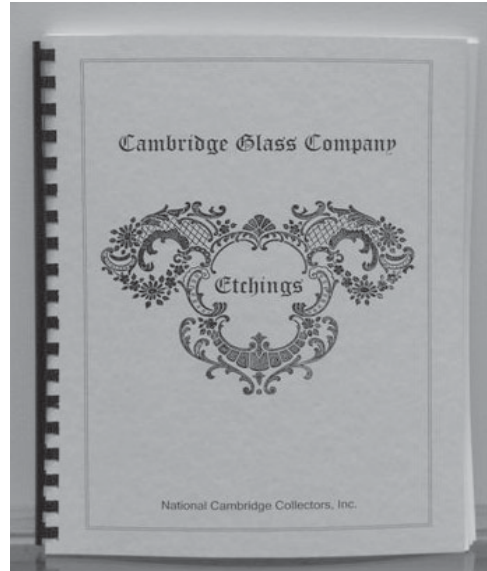


702-838-1341 or
800-357-7169
Web: www.OurHouseAntiques.com
E-mail: David@OurHouseAntiques.com

Coming Next Month

The 2007 NCC Auction Catalog

New Etchings Book Available



See Page 12 to Order

Websites

- **NCC WEBSITE**
www.CambridgeGlass.org
- **NCC WEBSITE - MEMBERS ONLY SECTION**
www.CambridgeGlass.org/NCCmembers
(User Name: NCC • Password: Nearcut)
- **MIAMI VALLEY STUDY GROUP WEBSITE**
www.mvsg.org

Membership Renewal Notice: If the date above your name is 12-06, this is your last issue, and your NCC Membership has expired. Please renew today.

National Cambridge Collectors, Inc.
PO Box 416
Cambridge OH 43725

website: www.cambridgeglass.org
e-mail: NCCCrystalBall@aol.com
(not for address changes, please)

**FIRST CLASS MAIL
US POSTAGE
PAID
PERMIT No. 3
CUMBERLAND OH 43732**

FIRST CLASS MAIL