

HAPPY HALLOWEEN



from the crystal ball



**21 PAGES**



# Crystal Ball

Published monthly (except July) by National Cambridge Collectors, Inc.  
to encourage and report the discovery of the elegant and boundless product of the  
Cambridge Glass Company of Cambridge, Ohio

Issue No. 389 (e-9)

October 2005

## Support The Century Club

**The Century Club**, established four years ago as a part of the capital campaign for our museum, has become the centerpiece of the NCC's development of an endowment and of the acceleration of the pay-down of our mortgage. Both of these goals are critical to the financial well-being and future of our club. All NCC members are encouraged to support **The Century Club**.

Donations to **The Century Club** are used for these two purposes only: one-third goes to the reduction of the mortgage on the National Museum of Cambridge Glass, and two-thirds goes to the NCC's Endowment Fund. Over the past four years, our club has reduced the mortgage from over \$120,000 to only \$35,000. At the same time, our endowment has grown from nearly nothing to over \$50,000. Because of member support of **The Century Club**, we have achieved this remarkable progress without weakening the club's operating position or financial reserves.

These members have donated to **The Century Club** during 2005:

1. William Alexander
2. Joe Andrejczak
3. Mike & Cindy Arent
4. Robert Arnold
5. Carl & Shirley Beynon



**Help "knock out" the mortgage!  
Join The Century Club today!**

6. Robert & Evelyn Buenting
7. James Buffenbarger
8. Julie Buffenbarger
9. Alex Citron & Shelley Cole
10. Robin Cook
11. Robert & Margaret Downing
12. Marjorie Farlow
13. Kenneth Filippini
14. Les Hansen
15. Patricia Harrison
16. Fleur deLys Healy
17. Ron Hufford
18. Patricia Janecek
19. Rick & Cindy Jones
20. Dorothy Kell
21. Willard & Norma Kolb
22. David & Kathy Lake
23. Dwayne & Bonnie Lippy
24. Joe & Sharon Miller
25. Max Miller
26. Nancy Misel
27. Janet Mitchell

28. Judy Momirov
29. Freeman & Jeannie Moore
30. Mark Nye
31. Mary Pfanenstiel
32. Ken Rhoads
33. Patricia Rutledge
34. Dale Shaffer
35. Ruth Smith
36. Cecil & Sharyn Taylor
37. Melinda Thaxton
38. Karen Trier
39. Melissa Trier
40. Jim Van Skiver
41. Charles & Loretta Weeks
42. Lynn and Mary Welker
43. Clarke West
44. Frank Wollenhaupt
45. Barbara Wyrick

We hope you will join these members in supporting the NCC through **The Century Club**. Your \$100 donation (which is entirely tax-deductible) may be mailed to:

**NCC Century Club  
PO Box 416  
Cambridge OH 43725**

Or, even more simply, you may join **The Century Club** on-line at the NCC's ebay store, and you can pay with your credit card! Just click here to join at the NCC's ebay Store.

**JOIN THE CENTURY CLUB**

continued on page 7

*Last Chance: Register for November Meeting & Program*

# National Cambridge Collectors, Inc.

PO Box 416 Cambridge, OH 43725-0416

## Membership

Master Membership, 1 year \$20.00  
 Associate Membership \$3.00  
 > for another person, age 12 or over,  
 residing in the same household

All members (Master and Associate) have full rights and benefits, including voting; Associate Members do not receive the newsletter.

## Address Changes

Please send address changes to:  
 Membership - NCC  
 PO Box 416  
 Cambridge, OH 43725

or by e-mail to:

[lin26@hocking.net](mailto:lin26@hocking.net)

## Board of Directors

Linda Adkins	Cindy Arent	Shelley Cole
Larry Everett	Ken Filippini	Rick Jones
Sharon Miller	Mark Nye	Mike Strebler
Lorraine Weinman	Lynn Welker	Frank Wollenhaupt

## Websites

- **NCC WEBSITE**  
[www.CambridgeGlass.org](http://www.CambridgeGlass.org)
- **NCC WEBSITE - MEMBERS ONLY SECTION**  
[www.CambridgeGlass.org/NCCmembers](http://www.CambridgeGlass.org/NCCmembers)  
 (User Name: NCC • Password: Nearcut)
- **MIAMI VALLEY STUDY GROUP WEBSITE**  
[www.mvsg.org](http://www.mvsg.org)

## National Museum of Cambridge Glass



Located at 136 S. 9th Street in downtown Cambridge, OH

Open from April thru October (closed Easter & July 4th)

Hours: Wednesday thru Saturday 9:00 to 4:00  
 Sunday Noon to 4:00

Admission: \$3.00 General Admission  
 \$2.00 for students, seniors and tour groups  
 \$2.00 for members of AAA  
 NCC Members FREE

## Contacts

NCC Museum [open April thru October only]  
 (phone) ..... (740) 432-4245  
 (fax) ..... (740) 439-9223

Ken Filippini, President ..... (201) 670-0990  
 e-mail: [lobstrboy1@aol.com](mailto:lobstrboy1@aol.com)

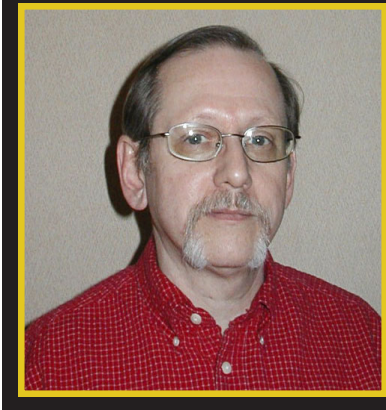
Linda Adkins, Secretary ..... (740) 432-2444  
 e-mail: [lin26@hocking.net](mailto:lin26@hocking.net)

Alex Citron, Crystal Ball Editor ..... (434) 296-2531  
 e-mail: [apcpenguin@aol.com](mailto:apcpenguin@aol.com)

## Officers & Committee Chairs

President	Ken Filippini
Vice-President	Rick Jones
Secretary	Linda Adkins
Treasurer	Sharon Miller
Sergeant-at-Arms	Shelley Cole
Acquisitions Committee	Lynn Welker, Chairman
Archives Committee	Mark A. Nye, Archivist
Budget & Finance Committee	Mike Strebler, Chairman
By-Laws Committee	Alex Citron, Chairman
Crystal Ball	Alex Citron, Executive Editor
Endowment Committee	Rick Jones, Chairman
Facilities Committee	Carl Beynon, Chairman Joe Miller
Grants & Fundraising Committee	Sharon Miller, Chairman
Long-Range Planning Committee	(vacant)
Membership Committee	Linda Adkins, Chairwoman Freeman Moore, Development Chairman
Museum Committee	Cindy Arent, Chairwoman
Nominating Committee	Tarzan Deel, Jr., Chairman
Program Committee	David Ray, Chairman
Projects Committee	Bill Hagerty, Chairman
Publications Committee	Mark A. Nye, Chairman
Publicity Committee	Lorraine Weinman, Chairwoman
Study Groups	Judy Rhoads, Advisor
Technology	Dennis Snyder, Chairman David Adams, Webmaster Alex Citron, ebay Store
Auction Committee	Dorothy Rieker Squeek Rieker Lynn Welker
Convention Committee	Shelley Cole, Chairwoman
Glass Show & Sale	Mary Beth Hackett, Co-chairwoman Joy McFadden, Co-chairwoman
Glass Dash	Larry Everett, Co-chairman Susan Everett, Co-chairwoman





## President's Message:



# Tool Box

I'm writing this on Labor Day 2005, and in many respects it is one of the most beautiful days of the year so far. Sunny with a touch of fall in the air, almost perfect, except for the fact that I just finished watching an update on another national tragedy, the destruction caused by Katrina. Looking at that devastation, seeing those homes under water, once again makes me realize how personally lucky I am; as well as how blessed we are as an organization. The images of those roofs sticking out of the water in New Orleans, so eerily reminded me of the picture on the cover of the August 1998 Crystal Ball, when the NCC Museum was also under water. That was one of the darkest days in NCC history, but as of today, we have recovered and even exceeded our own lofty goals. As trivial as the comparison may seem, I suspect with great efforts and much generosity the same rebirth will be true of Katrina's victims. I know our prayers are with them.

Speaking of the Museum, it is my great pleasure to report that, due to the membership's generosity and diligent economic planning, the Museum mortgage now stands at \$35,000, which is far in advance of the 10 year plan for paying off this debt. Combining this small amount of debt, with a combination of assets: museum, glass collection, two properties, as well as operating funds and endowment funds, NCC is in a very sound fiscal position at this time. In fact, you might say we are doing really great. The Museum itself continues to evolve and develop, with the addition of new glass as well as educational displays, and mostly donated original items from the Cambridge factory. Thanks to the

Viola Roth donation, the NCC-owned glass at the Museum got a decided shot in the arm, and hopefully will inspire others to follow her lead. Keep in mind, an optimistic goal would be eventually to fill the Museum with glass that NCC can call it's own. Since the Museum is one of NCC's main tools to both reach and educate the public, we must continue to keep it at its current high level. Thanks to Cindy Arent and her Museum Committee; their stellar efforts have yielded incredible dividends.

Another tool that NCC has effectively used over the years to reach and educate the public is its many publications. It has a varied library of books that have been universally accepted as helpful tools, used by both novices and more advanced collectors.

It is, honestly, my great pleasure to announce that NCC has signed a contract with Collectors books to produce Colors Book #2. It has been a long time in coming, and I for one am looking forward to its introduction. The first book my wife, Jane and I bought was Colors Book #1. To this day, we still use it, love it, and feel it was perhaps the quintessential publication issued by NCC. We constantly use it, and expect that Colors Book #2 will be a great adjunct to be used in coordination with Book #1.

As far as publications go, it is an exciting time for NCC. Ambitious plans are in the works for perhaps as many as three more books. Frank Wollenhaupt and Rick Jones have been setting parameters and establishing goals, so that this next group of books could be viewed as a kind of legacy that we all can be proud of. As with the Museum, NCC publications are tools meant to help advance our education mission, as well as pique the interest of new Cambridge lovers.

Another group of items in the NCC toolbox is the electronic Crystal Ball, the NCC website and the newly created Ebay Store. These web-based components are the newest group of educational tools being used by NCC to continue our mission, which we believe will engender an influx of new membership. The newly launched Ebay Store has gotten off to an incredible start. Thanks to Alex Citron, Dennis Snyder and Linda Adkins, we are able to fill orders for books, as well as other items, including new memberships on a daily basis. In a world where almost everyone has some involvement in the Internet, NCC has been keeping pace and continues to grow and flourish on all three of its electronic avenues.

In a previous President's message, I wrote about the usefulness of the NCC Study Groups. Last month I pointed out that one of our best tools were the NCC ambassadors, who go out in person and spread the word. When you combine those two tools with the Museum, our publications, as well as our electronic avenues. You see that there is a great deal of effort being made by many dedicated NCC members to help our organization function. Just as the people of New Orleans need to stay strong and must continue to believe in a future filled with new promise, so must we of the NCC continue to work together to make our own future even brighter. I am proud to be a part of this organization, and want to thank you all for your support. In the end, NCC's greatest tool is the dedication of its members.

*Ken*

# Cambridge Crystal Ball

The official publication of National Cambridge Collectors, Inc., a non-profit corporation with tax-exempt status. Published monthly for the benefit of its members. All rights reserved; reproduction in whole or part without written permission of National Cambridge Collectors, Inc., and the author is prohibited.

**Executive Editor**  
**Research Editor**  
**Advertising Manager**  
**Circulation**

**Alex P. Citron**  
**Les Hansen**  
**Jeannie Moore**  
**Sharon & Joe Miller**

## Editorial Policy

The Crystal Ball is primarily dedicated to publishing materials of particular interest to the members of the NCC and collectors of Cambridge Glass in general. Research materials submitted are subject to review by the Research Editor or other experts. Materials submitted by Board members or committees, which relate to NCC activities, should be submitted in writing. All submissions are subject to editing for length, accuracy and conformity to norms of style, spelling, punctuation and grammar. No advertising will be accepted on behalf of candidates for NCC or other elected office, nor for or against any legislative matter before the NCC Board or membership.

Artwork must be submitted in electronic (jpeg, tiff or bmp) format, unless special arrangements have been made in advance with the editor.

## Advertising Rates

### Display Advertising (camera-ready, submitted electronically):

Full Page	\$50.00
3/4 Page	\$40.00
1/2 Page	\$30.00
1/4 Page	\$20.00
1/8 Page	\$15.00

*(Add \$5.00 for each photograph)*

Electronic submission must be in Adobe PDF, PageMaker or Word. For other file types, call or e-mail in advance to make arrangements.

### Classified Advertising:

10 cents per word; \$2.00 minimum  
(Abbreviations and initials count as words)

### Dealer Directory:

\$24.00 for twelve-month contract  
Text limited by standard box size (see page 19)  
Includes FREE listing on NCC website

## Payment for Advertising

- Payment in full must be received before advertising will be run.
- Mail all payments to: NCC PO Box 416 Cambridge, OH 43725
- Ad copy must be received by us no later than 10th of the month preceding publication. Copy may be submitted by regular or electronic mail.

Submit Ad copy electronically to: [NCCCrystalBall@aol.com](mailto:NCCCrystalBall@aol.com)

# eCrystal Ball

The Crystal Ball is published monthly (except July) in both paper and electronic versions. The electronic version (the e-Crystal Ball) features full-color photographs, the latest news and announcements, and handy one-click links to NCC officers, committees, study groups, websites, dealers and advertisers.

It is delivered via e-mail during the first dew days of each month, often up to a week before the paper version arrives in the mail.

At this time, any member requesting the electronic version will also continue receiving the paper version each month in the mail. In the future, members may be asked to choose one or the other, but a paper newsletter will always be made available to those who prefer it.

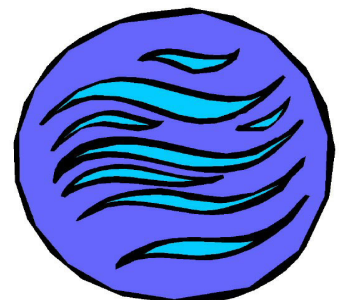
To subscribe to the electronic Crystal Ball, just send your name and membership number to:

[NCCCrystalBall@aol.com](mailto:NCCCrystalBall@aol.com)

Your membership number can be found on your current Crystal Ball, on the mailing label.

Thank you,

The Editor



## CARMEN... Revisited

by Les Hansen

Carmen, Cambridge's name for its ruby-colored glass, might top the list among Cambridge colors for popularity among collectors today. Yes, there are those who are devoted to Royal Blue, and Heatherbloom has a big following. Mardi Gras is very hard to find, so it solicits many oohs and aahs. Numerous opaque colors (especially Crown Tuscan, Violet, and decorated Ivory) have their share of admirers.

However, if a poll of Cambridge collectors were taken in which colors were ranked for desirability, I suspect Carmen would rank #1 (or very nearly so). Carmen is indeed a beautiful color for glassware, and the *Colors in Cambridge Glass* book states that Carmen is "a rich full bodied red", that "does not bear the depth of color or hardness of appearance that is often found in the ruby colors of other glass companies". Some items in Carmen lean toward yellow, especially in areas of items with thinner glass. Other items in Carmen are extremely deep, to the point of bordering on opaque, in the areas of items with thicker glass.

We last discussed Carmen in the March 2003 (#359) issue of the *Crystal Ball*. In that article, we pointed out that the all of the transparent colors of Cambridge glass in the 1930s were priced the same, except Carmen was priced 50% to 100% higher than the other colors. In other words, Carmen commanded a premium price when it was originally produced, and it continues to command a premium price today compared to other Cambridge glass colors.

Old stories die hard. A good, but false, story is that Carmen glass contains gold. We pointed out in the March 2003 article that Carmen is a

selenium-based ruby glass. We know definitively from Henry T. Hellmers' *Batch Book of Glass Formulae*, published in 2002 by Bill Courter, that none of the numerous formulas for Carmen contained gold. Perhaps, a gold coin was tossed into a single batch of Carmen at some point (that's how the story goes), but Carmen clearly was a selenium-based ruby glass and not a gold-based ruby glass. Glass manufacturers in the 1930s (Carmen was re-introduced for a period of time in the 1950s) such as Cambridge simply could not afford to use gold as a raw material.

The coloring agents in Carmen were cadmium sulfide (yellow – when glass is reheated) and selenium (red – when glass is reheated). Actually, the general formula for Carmen is very simple – just the four base materials of sand, soda, potash, and lime – plus borax, zinc oxide, and the two coloring agents of cadmium sulfide and selenium. Some have conjectured that the raw materials for Carmen might have been expensive, and this might explain the higher cost of Carmen compared to other transparent colors. That was probably not the case. Others have conjectured that Carmen was "brittle" and difficult to remove from molds; hence, many items might have been rejected, ground, and used as cullet in future batches of Carmen. That was probably not the case, either.

There certainly was a high rejection rate of Carmen items at the Cambridge factory, because more than 50% of numerous formulas for Carmen are composed of cullet – reused glass of the same color. However, the high rejection rate was most likely due to the difficulty in getting the color just right when originally melting the raw materials

in the pot and when reheating individual items. Carmen items weren't their distinctive red color when they originally came out of the molds, because they needed to be partially cooled and then reheated to bring out the Carmen color. This was a difficult process to get just right, re-heating too little or too much were both problematic.

The book, *Modern Glass Practice*, by Scholes and Greene, states that making selenium-based ruby glass is "more of an art than a science". Ideal melting conditions are critical to make selenium-based ruby glass, and the raw materials needed to be added to a preheated pot. Add to this the difficulty of length of time for reheating of individual items, and it is not surprising that perhaps up to one half of Carmen items produced by Cambridge were rejected and recycled as cullet at the factory.



#3011 Sweetmeat in Carmen.  
See color photos of more  
Carmen pieces on  
pages 20 & 21

# History & Research

## THE ORIGIN OF ROSEPOINT... ANOTHER LEGEND

NCC Webmaster David Adams recently received a note from a lady named Claudette, who wanted to share a story of the origin of the Rosepoint pattern. Her mother and aunt had both been Rosepoint collectors, and they had told Claudette about a legend they had heard about the pattern's beginnings.

The story is this:

*A member of French royalty was preparing to get married - a marriage for political reasons. For two years before the wedding, the nuns of a Paris convent worked to create a beautiful lace veil and cape for the bride. The night before the wedding, the veil and cape were placed in the bedroom of the bride-to-be, where it was hung before an open window. In the morning, the bride-to-be and her servants beheld a beautiful sight: during the night, a spider had spun a web over the veil, and drops of morning dew clung to the fine, lace threads. The morning sun made the dew shine so that the entire veil and cape became iridescent. The witnesses took it as a sign from God that the union was blessed. An artist was commissioned to capture the moment on canvas.*

*Rosepoint was designed with this story in mind. When you look at the Rosepoint pattern, you can see the flow-*

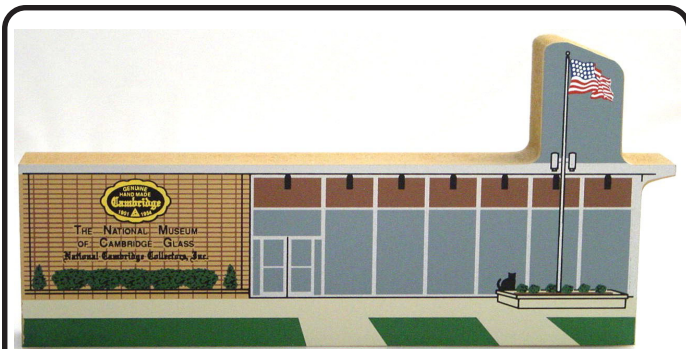
*ery design of the wedding lace, the rose framed by drops of dew, and the tiny lines which make up the spider's web.*

Apparently, Claudette's aunt had owned a copy of the painting mentioned in the story, and it was the reason she had started collecting Rosepoint. The fate of the painting is unknown.

The conventionally held version of the origin of Rosepoint comes from a 1935 circular letter from W.C. McCartney, of the Cambridge Glass Company. He asserted that Rosepoint was based on a design found in Belgian Lace; a lace which sold for \$120 a yard, and had been displayed at the 1934 Chicago Worlds Fair.

Claudette's story is surely a lovely one, and it does contain the lace element found in the "official" version. There may be truth in her family's legend, or it may simply be a delightful myth. In any case, we will probably never know for certain.

Whatever the case, Rosepoint was beloved by the public from its introduction, and remains, of course, the most popular Cambridge etch among today's collectors.



***Cat's Meow Collectible***  
***\$20 each***

*Produced by The Elegant Glass Study Group to benefit the NCC, and our museum.*

*Click the blue dot to order*



The article on NCC policy regarding value requests, and how the NCC is affected by tax laws, originally slated for this issue, has been postponed while additional research is done. Look for it in a later issue.

### 30TH ANNIVERSARY DEPRESSION GLASS SHOW & SALE

**FREEPORT RECREATIONAL CENTER**  
**130 East Merrick Rd • Freeport (LI), NY**

**SATURDAY, OCTOBER 22 • 12:00 TO 6:00**  
**SUNDAY, OCTOBER 23 • 10:00 TO 4:00**

*Door Prizes  
Reference Books  
Special Display*



*Free DG  
ID and Appraisal  
Sunday Only  
(Limit 6 pieces)*

***Grand Prize***  
**Luncheon Set**  
**Yellow Florentine II**

**DONATION \$5.50 (WITH THIS AD, 2 FOR \$5.00 EACH)**

*Sponsored by*  
**The Long Island Depression Glass Society, Ltd.**  
For information, please call (516) 798-0492

# People & Places

## Support The Century Club

from page 1

search box; and select **Join The Century Club**. Then, just follow the simple on-screen directions.

**Your fellow members - and all future NCC members - thank you.**

*Editor's Note: We have reprinted Sharon Miller's letter to former Century Club donors, in the hope that it may remind some of you to go ahead and renew your vital and generous support of the NCC's Endowment and mortgage reduction programs.*

September 7, 2005

Dear NCC Supporter,

I am appealing to you, a past Century Club supporter, to consider pledging to the Century Club 2005. This is the only major fund-raising effort for NCC other than dues and only four months remain for you to lend your support.

The Century Club was established in 2002 to celebrate the opening of the new museum and to give you, the membership, a way to pledge an annual \$100 gift to the museum earmarked for a specific purpose. In four short years, the Century Club has generated the funds to put a much needed \$35,000 roof on the museum, bring the Endowment Fund to over \$50,000 and help reduce the museum mortgage from \$120,000 to only \$35,000. That's quite an accomplishment, thanks to our loyal supporters.

Please join our pledge drive today as a way to insure the prosperity and future of NCC and our wonderful museum. Remember, your \$100 gift is tax deductible. Two-thirds of your Century Club gift will be used for mortgage reduction and one-third will go to the Endowment Fund. You may

## Original Cambridge Box Rediscovered



NCC member Ken Nichol (Columbus, OH) sent us these photos of an original shipping carton from The Cambridge Glass Company. His parents, residents of Zanesville, OH, had kept Christmas ornaments in it for more than 60 years! Ken recently rediscovered it in an attic recess.



*The Columbus Wildflowers Study Group at the home of George Martin. (l to r): Nicole, George & Michael Martin; Linda Warne; Bill & Joanne Lyle; Barbara Wyrick; Linda Speakman.*

send your pledge by mail or go to the NCC's ebay Store and pay by credit card. Thank you in advance for your continued generosity and support of the Century Club initiative.

The NCC board will soon be announcing a new evolution of the Century Club for 2006. Watch the *Crystal Ball* for details.

Sincerely,

Sharon Miller  
Chairman of Grants and Fundraising

**Red Scotties**  
Only a few pair remain



Click the blue dot  
to order





# ebay Report:

## Rosepoint:

- A pair of Calla Lily Candlesticks, etched Rosepoint, sold on 8/14 for \$280.
- A stunning pair of Cambridge Arms Sets, each with three Nappies and an Epergne vase; all of it etched Rosepoint, sold on 8/17 for \$2,716.



## Nudes:

- A Heatherbloom #3011 Table Goblet did not sell. The high bid of \$315 did not meet the reserve.
- A Royal Blue #3011 Bud Vase sold on 9/11 for \$768.
- Three #3011 Hocks (very hard-to-find) sold on 8/22. The Amber went for \$482, the Amethyst for \$480 and the Forest Green for \$402.



- A Carmen #3011 Cigarette Box (short stem) did not sell. the high bid of \$632 did not meet the reserve.
- An Amber #3011 Mint Dish sold for \$812; the second one of these rare pieces in two weeks!
- A Windsor Blue #3011 Candlestick sold on 9/16 for \$338.

## Various Etches:

- A #1066 Ivy Ball in Crystal, etched Chantilly, sold on 8/15 for \$350.
- A #994, four-footed Bowl, in Peachblo, etched Eliane, sold on 8/24 for \$305.
- A pair of #628 Candlesticks, also Peachblo, etched Elaine sold that same day for \$153.
- A lovely #3121 Brandy, etched Wildflower with gold trim, sold on 8/24 for \$205.
- A very rare 18" Crystal Floor Vase, etched Diane, sold on 8/28 for \$5,000.
- An unusual, 3-part Covered Dish in Amethyst, gold-encrusted Gloria, sold on 8/11 for \$409.



- A Crystal 80 oz. Ball Jug, etched Chantilly, sold on 9/15 for \$175.
- A Crystal #3400 32 oz. Decanter, etched Apple Blossom, sold on 9/12 for \$175.
- A pair of Crystal Martha Candlesticks with Hurricanes, etched Wildflower, sold on 9/12 for \$129.
- A Light Emerald Pinch Decanter, etched Apple Blossom, did not sell; the high bid of \$192 did not meet the reserve.

## Flower Frogs:

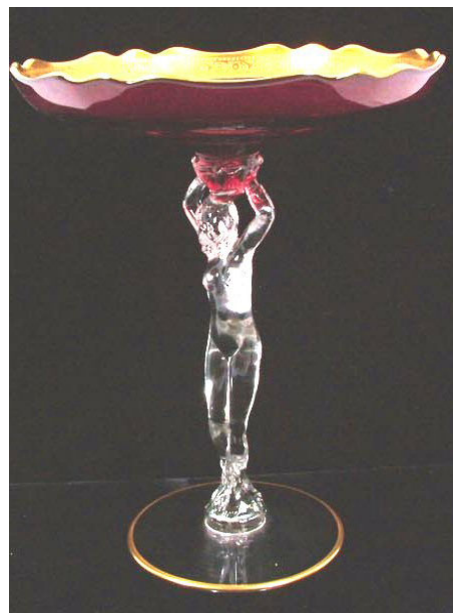
- A Moonlight Blue 13" Draped Lady on a #2 base, sold on 8/19 for \$490.
- A Crystal Blue Jay Flower Frog sold on 9/18 for \$123.
- A Peach-Blo 13" Draped Lady, on the #1 base, sold on 9/15 for \$291.
- A Light Emerald 13" Draped Lady on a #2 Base, sold on 9/6 for \$182.

## Miscellaneous:

- A #1542 "Life Saver" Decanter, with an Ivy Charleton decoration, sold on 8/22 for \$188.



- A Willow Blue, Everglade #38 Vase sold on 8/29 for \$228.
- A lovely pair of #1338 Tri-Level Candlesticks, in La Rosa Alpine, sold on 9/16 for \$374.
- A set of two 10.5" Azurite Plates, gold-decorated (according to included documents, made expressly for Pres. Warren G. Harding), sold on 9/16 for \$260.
- A pair of #437 Candlesticks in Ivory sold on 9/11 for \$128.

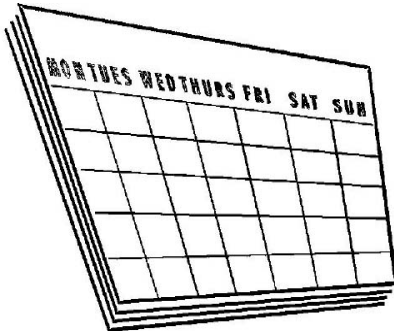


- This absolutely gorgeous Carmen #3011 Comport, with a heavy gold overlay, sold on 9/10 for \$975.

# Events:

If you know about any upcoming glass shows or other glass events, please pass the word on to us at least six to eight weeks before the show dates. These listings are free of charge.

## Mark Your Calendar



**November Program,  
Dinner & Quarterly Meeting**  
Saturday, November 5

**2006 Auction**  
Saturday, March 4

## Logo Patch



This attractive, embroidered Cambridge Logo Patch is now available from the Elegant Study Group. It measures 2" by 3.5" and can be ironed or sewn onto almost any fabric. Proceeds benefit the NCC.

**Only \$5, postpaid**

To order, call or e-mail  
Ken Filippini  
(201) 670-0990  
[lobstrboy1@aol.com](mailto:lobstrboy1@aol.com)

## Upcoming Glass Shows, Etc.

### October 22-23:

Upper Midwest DG & Pottery Show  
Bloomington, MN  
Call: (651) 770-1567

### October 22-23:

N.E. Florida DG Show & Sale  
Jacksonville, FL  
Call: (904) 268-5550  
E-mail: [KWPEWP@aol.com](mailto:KWPEWP@aol.com)

### October 22-23:

Long Island DG Club Show  
Freeport, NY  
Call: (516) 798-0492

### October 29-30:

Glassaholics DG Show & Sale  
Lakeland, FL  
Call: (863) 294-1887  
[www.glassaholics.com](http://www.glassaholics.com)

### November 6:

Toronto DG Show & Sale  
Mississauga, Ontario  
Call: (905)846-2835  
E-mail: [walt@waltztime.com](mailto:walt@waltztime.com)

### November 12-13:

Old Dominion Glass Club Show & Sale  
Fairfax, VA  
Call: (703) 941-1962

### November 12-13:

Tulsa Area DG Show  
Tulsa, OK  
Call: (918)747-4164

### November 12-13:

Hudson Valley DG Club Show  
Red Hook, NY  
Call: 845-473-3898  
E-mail: [metakum@aol.com](mailto:metakum@aol.com)

Mark your calendar now for the  
winter's #1 glass show.

## Sanlando Depression Era Glass Show & Sale

Sanford Civic Center  
Sanford, Florida



**Friday, January 27 6pm - 9pm**  
**Saturday, January 28 9am - 5pm**  
**Sunday, January 29 10am - 4pm**

### Special Guest:

*Mary Wetzal-Tomalko,  
Candlewick Collector*

DOOR RIZES • SNACK BAR

ADMISSION \$4.50 (SAT & SUN)  
PREVIEW FRIDAY \$6.00

For more information, contact  
Millie Downey  
(407) 298-3355  
[milliesglass@webtv.net](mailto:milliesglass@webtv.net)

## SPECIAL

## Jadite Tumblers



regularly \$20 each

**NOW \$10**

**YOU SAVE 50%**

Click Blue Dot to Order

# November Quarterly Meeting

by David Ray

The November Quarterly Meeting and Program is only a month away (November 5, 2005) and the deadline for registration is Saturday, October 22. The program this year is figural (human and animal) flower frogs. There has been a nice response from several NCC members who have graciously volunteered their flower frogs for the display. Thank you! Nevertheless, there are a few holes that need to be filled. If you have any of the following flower frogs in your collection and would be willing to share them with your fellow NCC members at the November Program, please bring them to the Holiday Inn by 5:30PM on the night of the program.

Rose Lady – Light Emerald – Base 1  
Two Bun Geisha – Crystal  
Rose Lady – Champagne – Base 2  
Two Bun Geisha – Light Emerald  
Draped Lady – 8.5" Bluebell – Base 2  
Two Bun Geisha - Amber  
Draped Lady – 8.5" Ebony – Base 2  
Draped Lady – 8.5" Crystal – Base 3  
Bird on Stump – Amber  
Charlotte – 6.5" Crystal – Base 3  
Bird on Stump - Crystal  
Charlotte – 6.5" Moonlight – Base 3  
Bird on Stump - Pink  
Mandolin Lady – Light Emerald  
Eagle – Light Emerald  
Two Kid – Champagne  
Eagle – Amber  
Two Kid – Crystal Oval Base  
Turtle – Crown Tuscan  
Two Kid – Light Emerald – Oval Base

Turtle – Ebony  
Turtle – Forest Green  
One Bun Geisha – Light Emerald  
Heron – 9" Milk Glass  
One Bun Geisha – Pink  
Blue Jay – Moonlight Blue  
One Bun Geisha – Ivory  
Melon Boy – Crystal

This year's buffet menu will consist of sliced sirloin beef, baked meat and vegetarian lasagna, baked chicken, mashed potatoes and gravy, country style green beans, beverage, and dessert. The cost for the meal is \$18 per person. Cocktail hour starts at 5:00PM and the meal will be served promptly at 6:00PM. See you there!

**Cut at the dotted line, and return the registration form to: NCC PO Box 416 Cambridge, OH 43725**

To avoid cutting up your Crystal Ball, you may send in a photocopy of the registration form, or register on-line (and pay with your credit card) at the NCC's ebay store:

**JUST CLICK ON THE BLUE DOT BELOW TO REGISTER ON-LINE**

*November Meeting Registration - due by 10/22*

Name(s):

\_\_\_\_\_  
\_\_\_\_\_  
\_\_\_\_\_  
\_\_\_\_\_

Address:

\_\_\_\_\_  
\_\_\_\_\_

City, State,

Zip Code:

\_\_\_\_\_

e-mail:

\_\_\_\_\_

*Please enclose a check for \$18 per person,  
payable to NCC.*

*Mail to:*

*NCC*

*PO Box 416*

*Cambridge, OH 43725*

*To register on-line, using your credit  
card, just click on the blue dot:*



# Museum Hosts Seminar for Educators

by Cindy Arent

The informational seminar about the student field trip program "A Dash Through the Past" was well received by area educators. Area attractions participating in the program are Mosser Glass, Inc., A Taste of Ohio, the Guernsey County Historical Society Museum, the Guernsey County Public Library, and The National Museum of Cambridge Glass. Special guests who were also invited to attend were Senator Joy Padgett, Cambridge Mayor Sam Salupo, and Debbie Robinson, Executive Director of the Cambridge/Guernsey County Visitors and Convention Bureau.

As teachers arrived, they were given a packet of information about the program and registered for a drawing

of a free field trip for one lucky class. During the seminar, each attraction presented a brief outline of the educational benchmarks and activities that will be completed at their facility during the student's day. As you can see from the following activity schedule at our museum, we are using every available inch to provide a variety of learning stations.

- Welcome and Orientation - all students meet in Museum auditorium
- Crystal Lady Film/Glassmaking description - auditorium
- Factory Map/Buildings in Time - Education Center
- Etching plate pencil rubbings - Research Library
- Tour of Glass Display Area

- Glassworker Migration - Member's Display Room
- Museum Badges - kitchen area
- Gift Shop/Information
- Lunch Tokens - after moving through the learning stations, the students will again gather in the auditorium to prepare for lunch. They will learn what it was like during lunch hour at The Cambridge Glass Company and be given a token to use for their lunch just as the glassworkers used years ago in the factory restaurant.

There is a strong possibility that we will have 255 students this fall and next

**continued on page 12**

## *Glass ID:*

Hi. I acquired this wonderful green vaseline "service tray for relish or the like" (as stated in the patent) and was wondering if I could get a little more information. I have spent a couple of hours researching it. It has the patent number on it (72491). Through the patent number I was able to determine that the patent was filed by W.L. Orme on January 31, 1927 and is dated April 19, 1927. After an extensive search I found out that W.L. Orme was a member of Cambridge Glass. I just don't know if he is William or Wilber. He signed the page with the picture of the tray under Inventor as W. L. Orme. I also don't know a pattern name. It has a beautiful wheel cut design and fluoresces beautifully under blacklight. Any information you can give me would be appreciated. I'm having fun researching but am kind of at a dead end. Unfortunately, I don't have a Cambridge Glass pattern book. Thank you so much!

-- Karen

*Tarzan Deel, Jr. responds:*

Got your picture; you have a #397 Relish in Lt. Emerald Green, pictured



in the 1927-1929 Catalog reprinted by Bill and Phyllis Smith. The catalog was donated to the NCC after Phyllis passed on in 2003. The book can still be purchased through our ebay store:

<http://stores.ebay.com/National-Cambridge-Collectors>

Your engraving or cutting is a bit more problematic, many of the wheel cuttings of this time frame were not well documented. There is quite a similarity to #4050; the flower is the same anyway, and the leaves appear to be the same. The engravers (cutters) used a lot of discretion

when working their craft. A design was modified to conform to the piece, which sometimes makes it difficult to track down. Beyond that, it is a floral engraving and that is about the only thing you can be certain of.

Wilber Orme was the second president of the Cambridge Glass Company and Arthur J. Bennett's (1st president) son-in-law. I suspect the one who was working at the time was Wilber.

—Tarzan Deel, Jr.

## At the Museum

### Rubbings in the Research Center



Museum Guide Betty Sivard (standing) shows museum visitors how to do a pencil rubbing from Cambridge Glass Company etching plates. These guests have some pieces of Rosepoint, and were excited to have rubbings from the Rosepoint plates to add to their collection.

As part of the Museum's Oral History Project, videos are shown with workers talking about their jobs at the factory. On this day, the Bill Smith video was featured, describing the various departments at the Cambridge factory just before it was razed in the early 1990's.

### Educators' Seminar

from page 11

spring just from the school where I teach. We hope to have many more because we are finally ready!

Many thanks to the volunteers who spent long hours of preparation to develop this educational opportunity for area children to enjoy. The museum is thriving thanks to NCC members generously giving their time, ideas and offering their special skills to make every aspect function properly. We are truly fortunate.

Museum activity will continue through December even though we officially close for the season the end of October. We will be hosting area students, Christmas tours, changing the three feature rooms, and begin the photography for the second edition of the colors book. The Auction Committee will also be unpacking and listing glass for the March Auction.

If you are coming to Cambridge early for the November Quarterly Meeting, we could use your help at the museum on Thursday, November 3 at 2:00. Great Day Tours will be arriving with a group of 55 people to tour the museum. We hope to see you then!



A lunch token from the Cambridge Glass Factory

## A Dash Through the Past

### The National Museum of Cambridge Glass • Student Field Trip Schedule

In order to fulfill the educational component of the NCC's mission, and to help develop youth appreciation of fine, American, handmade glassware, the National Museum of Cambridge Glass - in cooperation with area schools - has developed this field trip program. In its first year, it has been a resounding success. The enthusiastic response of the students (who especially enjoy doing the rubbings of the etching plates) is an encouraging portent of the next generation of collectors and glass enthusiasts.

#### Activity Schedule:

Welcome session in Museum Auditorium - all students will be seated in chairs and sitting on the stage. Students will sit with their assigned group/chaperone.

**Six stations/centers:** 10 - 15 minutes each; divide students into six equal groups to move throughout the museum. Each group will receive a schedule to follow.

Crystal Lady Film/glassmaking description - (Auditorium)  
Factory Map/Buildings in Time - (Education Center)  
Etching Plate Rubbings - (Research Library)

Tour of Glass Display Area

Glassworker Migration

(Member's Display Room)

Museum Badges - (Kitchen Area)

Gift Shop/Information

**Lunch Tokens** - after moving through the stations, the students will gather again in the auditorium to prepare for lunch. They will learn what it was like during lunch hour at The Cambridge Glass Company and be given a token to use for their lunch just as the glassworkers used years ago in the factory restaurant.

# Minutes of the Annual Meeting

## Annual Membership Meeting June 24, 2005

President Ken Filippini called the Annual Membership Meeting of the National Cambridge Collectors Inc. to order at 8:45 p.m. on June 24, 2005 at Pritchard Laughlin Civic Center.

Freeman Moore reported the silent auction results: A total of 25 donations were received and the total amount received was \$1,585.

Tarzan Deel reported the Board election results: The seats of Ken Filippini, Rick Jones and Dennis Snyder were up for re-election. The election committee met June 23rd at 1:00 p.m. for the purpose of counting votes. There were 255 votes received. Candidates elected to the Board were: Linda Adkins, Ken Filippini and Rick Jones. Also having met the by-law provisions, Dennis Snyder was declared first alternate. All other candidates received at least 20% of the vote.

Mark Nye moved to dispense with the reading of the minutes, second by Frank Wollenhaupt. Motion carried.

Treasurer Dennis Snyder reported on the organization's financial activities from January 1, 2005 through May 31, 2005.

Account balances were:

	1/1/05	5/31/05
Operating	\$42,795	\$48,824
Other	\$2,236	\$6,158
Century Club	\$1,125	\$1,124
Endowment	\$47,226	\$48,433
<b>Total</b>	<b>\$92,257</b>	<b>\$103,415</b>

The total cash balance for the NCC as of May 31, 2005 was \$103,415. Dennis also reported that the current balance of the mortgage was \$45,378, which was a significant reduction from the previous year.

### COMMITTEE REPORTS:

**Budget and Finance – Mike Strebler:** The development of an operating budget and forecast was the major initiative for the past year. Continued work of the monthly budgets will be the focus this year. The ten-year forecast looks good.

**Archives and Publications – Mark Nye:** Mark said that we are still working with paper items that were damaged during

the flood. He also reported that the research library is open.

**Crystal Ball and Bylaws – Alex Citron:** No by-law items pending. The eBay store is up and running. Items include NCC publications, membership applications, donation forms and some merchandise. The September electronic issue of the Crystal Ball will include hyperlinks for the first time, this will allow members to click and be redirected to the appropriate web address. The eCrystal Ball is now 7 months old and contains many more photos than the paper version. As a reminder, the next issue will be in August.

**Endowment – Rick Jones:** We will cross the \$50,000 milestone this year in the endowment fund. See the Crystal Ball for more details on the launch of the Heritage Society, which will recognize members that include the NCC in their wills and bequests. We are pleased to announce that the NCC was the beneficiary of a large collection of glass from member Viola Roth's estate. More details will be available later.

**Facilities – Carl Beynon:** There were some minor air conditioning problems, which were corrected, but all-in-all everything is in great shape.

**Grants and Fundraising – Sharon Miller:** Sharon encouraged members to continue their support of the Century Club. The proceeds will be used for mortgage reduction and the endowment fund.

**Long Range Planning – Doug Ingraham:** Doug met with the first-timers this morning.

**Membership – Linda Adkins:** There are 773 Master members, 349 Associate, 5 Honorary, and 6 Life for a total of 1,133. A moment of silence was observed for the seven members that passed away this past year.

**Museum – Cindy Arent:** Cindy described the current displays in the dining room, special display area, the education center and the sample room. Several members have contributed glass and display items to make this a great display. Cindy thanked David Adams for including photos of the 2002 - 2005 displays on the NCC web site. Cindy thanked all the volunteers and Carl Beynon for all their hard work. The last scheduled event for the museum will be in December. Next

year's dining room display will feature Carmen and gold.

**Publicity – Lorraine Weinman:** Lorraine reported that the Glass Pass effort continues and the number of Glass Pass member groups continues to grow. Information is also being sent to tour bus groups.

**Study Groups – Judy Rhoads:** Judy reported that all active study groups were represented in this morning's meeting. There are five regions that are interested in forming a study group, they include; NE Ohio, North Carolina, Michigan, Iowa, and Missouri.

**Convention – Shelley Cole:** Shelley thanked everyone for their attendance and asked to send in comments if you have them.

**Web Master – David Adams:** David reported that members may now use a search engine in the member's only section. This should make it much easier to find information that is contained in Crystal Ball articles. David is also scanning in photos of older Crystal Ball articles as he has time.

**Glass Dash – Larry and Susan Everett:** The Glass Dash is tomorrow at 7:00 a.m.

**OLD BUSINESS:** None

**NEW BUSINESS:** None.

Alex Citron moved to adjourn. Second by Cindy Arent. Motion carried.

The NCC Annual Meeting adjourned at 9:27 p.m.

Respectfully submitted,

Larry Everett, Ph.D.  
NCC Secretary



# Study Groups:

The NCC has several study groups; these are the groups currently active and holding regular meetings. Listed below is contact information for these study groups.

If there is no study group in your area and you are interested in starting or joining a new study group, please contact NCC Study Group Advisor, Judy Rhoads at [kjrhoads@aol.com](mailto:kjrhoads@aol.com).

## #13 - Miami Valley Study Group

Miami Valley area, Ohio  
Larry Everett  
[db0098@dragonbbs.com](mailto:db0098@dragonbbs.com)  
(937) 675-6491

## #14 - The Cambridge Cordials

Cambridge, Ohio  
Lorraine Weinman  
[blweinman@hotmail.com](mailto:blweinman@hotmail.com)  
(330) 966-9376

## #15 - North Texas Cambridge Study Group

Dallas area, Texas  
Scott Pierce  
[scottpierce1@msn.com](mailto:scottpierce1@msn.com)  
(817) 427-9510

## #16 - Elegant Glass Collectors

PA & NJ  
Bill Dufft  
[billnvon@aol.com](mailto:billnvon@aol.com)

## #17 - The Columbus Wildflowers

Columbus, Ohio  
Barbara Wyrick  
[bwyr@ee.net](mailto:bwyr@ee.net)  
(614) 291-0361

## #18 - The Cambridge Triangles

VA, MD, DC  
Alex Citron  
[NCCcrystalball@aol.com](mailto:NCCcrystalball@aol.com)  
(434) 296-2531

## #19 - NE Ohio Collectors

Akron-Canton area, OH  
(currently inactive)

## #20 - South Florida Study Group

Miami, FL  
Linda Gilbert  
[rosepointbabe@aol.com](mailto:rosepointbabe@aol.com)

## Study Group #17 The Columbus Wildflowers

The Wildflowers normally do not meet during the summer, but we were offered a special invitation by George Martin, to view his wonderful Milkglass collection. So, on Thursday, August 18th, 2005, the Wildflowers met at the home of George Martin at 7:00 pm.

George conducted a fabulous program on Milkglass, which was both beautiful and informative. A few of the things we viewed and studied were the various sizes of Mount Vernon stems from the 1 oz Cordial to the Footed Tumblers to the Tall Sherbets and 10 oz Goblets, along with the Mount Vernon Salad Plate and various sizes of Decanter – quite a lovely display of Milk. We saw an assortment of Mount Vernon Urns – all from the same mold – one was wider and more flared, one the standard size Candy and several Ivy Balls with the tops pulled in. We couldn't believe they were all from the same mold, but yes, we counted the top row of diamonds, and each one had 48! The Milk lid also fit on different Candies, and also the low Fingerbowl.

We looked at some unusual Vases including the #W133 Cascade-like Vase in Milk, and a large crimped edge #W80 Milk vase that we would never have known was Cambridge (more like the Fenton hobnail) but

There are members interested in forming Study Groups in these areas. If you live here, and want to get involved, please contact Judy Rhoads at [kjrhoads@aol.com](mailto:kjrhoads@aol.com)

**New York City  
Southern Michigan  
Iowa  
Missouri  
North Carolina**

there it was in the Cambridge catalogue, along with the #W82 hobnail looking Marmalade and cover. We looked at the Milk Cream and Sugar in Farber brass holders and discussed that Milk was supposedly always in Brass, although there are examples of Milk in silver (which we actually liked better) but they may not be in the original fittings.

We saw a beautiful #W54 Cut Pitcher and phenomenal Ashtrays, including the round nesting set and we discussed how to tell the Cambridge from the Consolidated Milk – Cambridge has the ridge on the bottom, Consolidated's is flat, as is the four-piece Ashtray Set in Milk in the Crystal holder. We studied a series of Crown Tuscan and Milk #W110 Dolphin Candlesticks and noted the wide variations in the color and thickness of the Crown Tuscan, and saw them with and without the Bobeches and Prisms. We also looked at Charleton decorations on Milk in a series of 8 inch Shell Bowls, and saw numerous other Milk items like the 5 inch Nappy, Cornucopias, and the large Platter. We then looked at some of the older Plainware footed Comports that, although they looked like Milk, when held to the light, had some opalescence, and because of the date the line was produced, may be Carrerra. These were just a few of the highlights of George's wonderful program.

George's daughter, Nicole, served a delightful assortment of refreshments including relish tray, cheese and fruit, served on crystal Gadroon plates, and we had a discussion on what each of us collects. Our favorite things included Carmen pieces, Flower Frogs, Cordials (of which a total collection could hold up to 2,000 pieces), Nudes, Ice Buckets, Rosepoint, and hand painted enamel items.

The meeting ended with some Show and Tell items and discussion of how to tell a Cambridge from an unsigned

# Study Groups:

Bennett Bridge Hound. There are supposed to be differences in the eyes and ears, the smaller eyes are Cambridge, but we had a hard time distinguishing them. And the nudes from the early molds, when the molds were new and fresh, had belly buttons and distinct fingers on each hand.

We reminded everyone of the date of our next meeting, which will be our "Annual End-of-Summer Picnic / Potluck" at the home of Bill and Joanne Lyle on Saturday, September 10<sup>th</sup> at 2:00 pm. The Lyle's will furnish burgers to grill and everyone is to bring a side dish or dessert, and any new or fun glass items they found over the summer.

Our meeting adjourned at 9:45 PM. The Wildflowers wish to thank George Martin and his family for a wonderful evening! New members in the Columbus, Ohio area are always welcome and can contact either Linda Roberts at [lrobert2@columbus.rr.com](mailto:lrobert2@columbus.rr.com) or Barbara Wyrick at [bwyr@ee.net](mailto:bwyr@ee.net)

—respectfully submitted by Barbara Wyrick, Secretary

## Study Group #17 The Columbus Wildflowers

On Saturday, September 10, 2005, the Wildflowers met at the home of Bill and JoAnne Lyle at 2:00 pm for our annual End-of-Summer Picnic / Potluck. It was great to see everyone and hear what we had been doing over the summer. Bill and JoAnne grilled hamburgers and everyone brought a bountiful array of side dishes and desserts for a wonderful feast.

Our meeting was called to order by Linda Roberts. Under New Business, we discussed whether to continue our Penny Court display cases for the NCC Museum for another year.

David Ray also talked about the November meeting on Flower Frogs

and asked us to help provide examples of a wide variety of frogs.

We set our meeting schedule for the coming year. The Wildflowers will meet on:

- October 13 at Linda Roberts' with a topic of Insuring and Protecting our glass.
- November – no meeting since we will be attending the Quarterly meeting in Cambridge.
- December 8<sup>th</sup> – annual Christmas party at the home of Rose MacConkey
- January 5<sup>th</sup> – at David Ray's
- February 2<sup>nd</sup> at Ken and Jackie Nicol's
- March – no meeting because of the March auction
- April 6<sup>th</sup> – at Barb Wyrick's
- May 4<sup>th</sup> - open

The rest of the program topics will be set next month.

In place of a program, we moved on to Show and Tell where we brought items we had found over the summer and all had a great time talking about how and where we found various things. Items included: a Light Emerald Pillow Vase etched Gloria; a fabulous Black Amethyst Frog Vase; a Pink Caprice huge footed Plate and #84 large Bowl; two French Dressing Bottles in Amber with pink stoppers (the correct stoppers, but we couldn't figure out the color combination); Light Emerald Fan

Vase with optic etched Cleo; Forest Green Snail Vase with an unusual frosted interior; a Muddler stem Mt Vernon Comport in Carmen; three "Hanging Heart" etched 10" Vases – Light Emerald with a vertical optic and gold trim, Amber with a spiral optic, and pink with a solid gold trim edge; two phenomenal Acorn Top Perfumes – one with an acid etched interior and black enamel over it with floral design cut in to show thru, and one with acid etching, gold flash and gold trim; two 4 ½" Swan Candleholders; a Cabinet Flask in Mocha with Appleblossom and unusual gold filigree holder; 10" Carmen Cambridge Square Vase; a Martha Washington Carmen Handled Mug; Mt Vernon Carmen Salt; a Georgian Carmen Basket and #119 large Carmen Basket; a 6" Carmen Vase; Crystal Pristine Cocktail Shaker; crystal Oil and Vinegar Bottle; Carmen Snail Shell; a Crystal Cheese Comport with Gold Encrusted Candlelite; a Cranberry flashed Perfume; a frosted Pearl Mist Shell candy dish; a pair of Gold Krystol Dolphin Candlesticks with Silver trim; and a Nude stem Cigarette Box with silver overlay Dog Scene.

Everyone had a great time and our meeting adjourned at 6:45 pm.

—respectfully submitted by Barbara Wyrick, Secretary



Museum student volunteers Brook and Steve Bennett with educational aides for the new field trip program. Brook will teach children about the migration of workers to Cambridge, and Steve will lead groups thru the museum.



# The Marketplace:

Click on the Blue Dot ● to Order On-line

## Jadite Tumblers



**SPECIAL: ONLY \$10 EACH**

ORIGINALLY \$20

plus shipping

Made for the NCC by Mosser Glass  
Marked on the bottom: NCC 2002



## NCC LOGO PINS



Show your pride  
in being a  
Cambridge  
collector and a  
member of NCC.

Only \$5.00 plus \$1 shipping



## CAT'S MEOW Official Collectible \$20



## Red Scotties

Just a few pair are still available  
\$100.00/pr  
Order yours today!



## COBALT SCOTTIES



**NEW Cobalt Blue  
Scotty Dogs**  
\$100.00/pair



## Salt & Pepper Tops

**\$6.00 per pair**

Polycarbon plastic, will fit  
most Cambridge shakers  
such as Rosepoint footed  
and flat-bottom shakers.

Also fit Heisey Rose,  
Saturn, Plantation,  
Cristolite and some Orchid.  
Will fit some Anchor Hock-  
ing and Candlewick.

Order 10 or more pairs,  
pay only \$5 per pair

buy one pair



buy 10 pairs



## VIDEOS

**"The Crystal Lady" \$15.00**

A video copy of an original Cambridge Glass  
Co. promotional film showing the making of  
a goblet in the Cambridge factory. 25  
minutes, Color.



**Grand Opening Video \$15.00**

A high-quality video record of the Grand  
Opening of The National Museum of  
Cambridge Glass. 25 minutes, Color.



## TAPE MEASURES

Comemmorating the opening of the  
National Museum of Cambridge Glass



**\$1**

plus  
shipping

Not available on-line

## CONVENTION FAVOR

**2005 Vaseline Prism Sign \$15.00**



Other Convention favors (1995 to 2004)  
will be available at the ebay store  
at a later date.



**OHIO RESIDENTS: PLEASE ADD 7.5% SALES TAX**

Mail Orders: payment by check or money order only

On-line Orders: payment by Credit Card or Personal Check

Send Mail Orders to:

**NCC PO Box 416 Cambridge, OH 43725**

Be sure to include your complete mailing address &  
phone number or e-mail address.

**SHIPPING & HANDLING RATES:**

- Scottie Dogs: \$10/pair
- Logo Pins: \$1 for any quantity
- Tape Measures: \$1 for any quantity
- Factory Plans: \$5.50 for any quantity
- S&P Tops: shipping included in price

**EVERYTHING ELSE:** \$4 for the first item; \$1 for each additional item

# Books for Sale

For On-line ordering, just click on the book title to order

**NCC Members receive a 10% discount on the following books (member price in right-hand column):**

<b>1910 Near Cut</b>	108-page reprint of the 1910 Catalog. Paperback with price guide	\$14.95	<b>\$13.45</b>
<b>NearCut Value Guide</b>	Values updated as of 2004 (when purchased separately)	\$3.00	<b>\$3.00</b>
<b>1930-34 Catalog</b>	250-page reprint of 1930 thru 1934 Catalogs. Paperback with price guide	\$14.95	<b>\$13.45</b>
<b>1930-34 Index</b>	Helpful guide to 1930-34 Catalog Reprint	\$2.00	<b>\$2.00</b>
<b>1940 Rock Crystal Price List Reprint</b>	Shows actual 1940 pricing	\$14.95	<b>\$13.45</b>
<b>1956-58 Catalog</b>	160-page reprint of 1956 thru 1958 Catalogs. Paperback (no price guide)	\$12.95	<b>\$11.65</b>
<b>Caprice</b>	200 pages; lists colors, decorations, reproductions, etc. Paperback with price guide	\$19.95	<b>\$17.95</b>
<b>Caprice Value Guide</b>	2003 Values (when purchased separately)	\$5.00	<b>\$5.00</b>
<b>Decorates</b>	136-page Paperback (no price guide)	\$14.95	<b>\$13.45</b>
<b>Etchings, Non-Catalogued</b>	70-page Paperback (no price guide)	\$12.95	<b>\$11.65</b>
<b>Etching: Blossom Time</b>	26-page Paperback (no price guide)	\$7.95	<b>\$7.15</b>
<b>Etching: Candlelight</b>	30-page Paperback (no price guide)	\$7.95	<b>\$7.15</b>
<b>Etching: Chantilly</b>	44-page Paperback (no price guide)	\$7.95	<b>\$7.15</b>
<b>Etching: Diane</b>	53-page Paperback (no price guide)	\$7.95	<b>\$7.15</b>
<b>Etching: Elaine</b>	64-page Paperback (no price guide)	\$9.95	<b>\$8.95</b>
<b>Etching: Portia</b>	57-page Paperback (no price guide)	\$7.95	<b>\$7.15</b>
<b>Etching: Wildflower</b>	42-page Paperback (no price guide)	\$7.95	<b>\$7.15</b>
<b>Rock Crystal Engravings</b>	Paperback (no price guide)	\$17.95	<b>\$16.15</b>
<b>Rock Crystal Engravings: The Listings</b>		\$9.95	<b>\$8.95</b>
<b>Rosepoint</b>	94 pages; a comprehensive guide to Rosepoint. Paperback with price guide	\$14.95	<b>\$13.45</b>
<b>Rosepoint Value Guide</b>	Values as of 2002 (when purchased separately)	\$5.00	<b>\$5.00</b>

## The following books do not offer member discounts:

<b>The Glass Candlestick Books</b> .....	by Tom Felt and Elaine & Rich Stoer (hardback, full-color)	
	Volume I: Candlesticks from Akro Agate thru Fenton	\$24.95
	Volume II: Fostoria thru Jefferson	\$24.95
	Volume III: Kanawha thru Wright	\$29.95
<b>Charleton Decorations</b> .....	by Michael & Lori Palmer; a comprehensive guide to Charleton; full-color. Hard-cover (no price guide)	\$29.95
<b>1903 Catalog</b> .....	106-page reprint by Harold & Judy Bennett Paperback (no price guide)	\$5.00
<b>1927-29 Catalog</b> .....	66-page reprint by Bill & Phyllis Smith Paperback (with 1996 price guide)	\$9.95
<b>1927-29 Value Guide</b> .....	1996 Values (none newer has been published)	\$3.00
<b>1940 Catalog</b> .....	250-page reprint of the largest Cambridge Catalog (loose 3-hole punched pages) No price guide	\$25.00
<b>Reflections</b> .....	by the Degenhart Paperweight & Glass Museum A history of Guernsey County glass production; 45-page Paperback	\$5.00
<b>Stemware</b> .....	by Mark Nye; shows all Cambridge stemware lines 167 page Paperback (no price guide)	\$19.95
<b>Welker – Volume II</b> .....	by Lynn & Mary Welker; 15 color plates showing choice pieces from their vast collection	\$5.95
<b>The Art of Making Fine Glassware</b> ...	A reprint of a promotional piece produced by the Cambridge Glass Company. It explains the manufacturing process of the company, including molded, blown, etched and cut crystal glassware. Illustrated paperback; 40 pages.	\$4.00
<b>Glass Animals (2nd Edition)</b> .....	by Dick & Pat Spencer. 317-pages, full-color, hardback.	\$24.95
<b>Kitchen Glassware of the Depression Years (6th Edition)</b>	by Gene & Cathy Florence. 270-pages, full-color, hardback.	\$24.95
<b>Collectible Glassware from the 40's, 50's and 60's (7th Edition)</b>	by Gene Florence. 253 pages, full-color, hardback.	\$24.95
<b>Treasures of Very Rare Depression-Era Glass</b>	by Gene Florence. 365 pages, full-color, hardback.	\$39.95
<b>Elegant Glassware of the Depression Era (11th Edition)</b>	by Gene Florence. 253 pages, full-color, hardback.	\$24.95



## Stems Without Thorns

As the world's largest supplier of old & new china, crystal, silver and collectibles, Replacements, Ltd. has more than 700 different patterns of Cambridge crystal.

And however much we enjoy selling pieces that were once thought irreplaceable, we love buying them as well. Thanks to people like you, our crystal inventory currently numbers in the hundreds of thousands, and the numbers keep growing every year.

So, if you've been unsuccessfully searching for that elusive piece of Cambridge — or any other type of fine crystal — call us for a free list of pieces available in your pattern. And, if you're looking to sell pieces you currently have, we can help you there, too.

**REPLACEMENTS, LTD.**  
China, Crystal & Silver • Old & New

**1-800-REPLACE**  
(1-800-737-5223)

1089 Knox Road,  
PO Box 26029, Dept. CB,  
Greensboro, NC 27420

[www.replacements.com](http://www.replacements.com)



**Classified Ads**



### For Sale:

**SELL GLASS HERE...** a "For Sale" ad like this costs less than \$3, and reaches over 1,000 Cambridge collectors. Sell a single piece or an entire collection!

### Wanted:

**WANTED...** Cambridge "Jefferson" Iced tea goblets, Gold Krystal (yellow) **NEED THREE**  
[dsatterwhite@Hot.rr.com](mailto:dsatterwhite@Hot.rr.com) (254) 772-1300

**FIND GLASS HERE...** a "Wants" ad like this costs less than \$3, and reaches over 1,000 Cambridge collectors. You may locate that one elusive piece, or fill out a set!

## DEALER DIRECTORY

### THE DEGENHART PAPERWEIGHT AND GLASS MUSEUM, INC.

P.O. Box 186  
Cambridge, OH 43725-0186  
Intersection of US 22 & I-77  
Phone 740-432-2626

### Cherished Collectibles

Shopping 24 hours in our online store  
Glassware, Figurines, Collectors' Plates  
[www.cherished-collectibles.com](http://www.cherished-collectibles.com)  
Elegant and Depression Era Glass

Dee and Tony Mondloch  
Phone: 850-747-8290 [glass01@knology.net](mailto:glass01@knology.net)  
1609 Clay Ave. Panama City, FL 32405

### Precious & Few

Tiffin and Duncan & Miller Glassware,  
Other Elegant Glass, Antiques, Collectibles  
**Shop: [www.apreciousfew.com](http://www.apreciousfew.com)**

**Glass Menagerie Antiques**  
Your Website for quality Glass from  
the 20's, 30's, 40's & 50's.  
[www.glasstreasurechest.com](http://www.glasstreasurechest.com)

### GREEN ACRES FARM

2678 Hazelton Etna Rd.  
Pataskala, OH 43062  
(State Route 310 North)

Sat & Sun 1-7 pm 740-927-1882  
Antiques, Crystal Glass & Collectibles

### THE GLASS URN

456 West Main Street, suite G  
Mesa, AZ 85201 480-833-2702  
480-838-5936

Mail Order Shows Open Shop

CAMBRIDGE, FOSTORIA, HEISEY, etc.

Fostoria Glass Society of America  
Traveling Ambassadors  
**Ralph & Joyce Rider**

For info: 817-545-5856  
E-mail: [r.rider@sbcglobal.net](mailto:r.rider@sbcglobal.net)

John **Burlingame** Betty  
Visit our booth (B-6) in  
**DELILAH'S**

301 1st Street Sanford, FL 32771  
Antiques, glass, pottery, collectibles, etc.  
cell 386-212-7121 tel 407-330-2272

### Max Miller

Elegant Glassware • Books • Fiesta  
...and more  
THE MARKET PLACE  
(713) 467-0450 - BUS 10910 OLD KATY RD.  
(713) 461-1708 - RES HOUSTON TX 77043  
[MMXGLASS@aol.com](mailto:MMXGLASS@aol.com)

### Remember...

When writing to these dealers,  
please include a self-addressed,  
stamped envelope.

**CLICK ON ANY BLUE BOX TO  
BE TAKEN DIRECTLY TO THE  
DEALER'S WEBSITE OR E-MAIL**

**YOUR AD COULD BE HERE  
ADVERTISE YOUR SHOP OR SERVICE  
JUST \$24 A YEAR**  
SEE PAGE 4 FOR DETAILS

# DEALER DIRECTORY

CLICK ON ANY **BLUE** BOX TO BE TAKEN DIRECTLY TO THE DEALER'S WEBSITE OR E-MAIL

When writing to these dealers, please enclose SASE

**DAUGHERTY'S ANTIQUES**  
Jerry and Shirley  
Antiques and Collectibles • Mostly Glass

www.daughertys-antiques.com  
e-mail: sdaugh2515@daughertys-antiques.com

Shows & Mail Orders 2515 Cheshire North  
(402) 423-7426 evenings Lincoln NE 68512

**Milbra's Crystal** Buy & Sell  
Replacement and Matching Specilizing in  
Milbra Long (817) 645-6066 Cambridge,  
Emily Seate (817) 294-9837 Fostoria, Heisey  
PO Box 784 and others  
Cleburne TX 76033

E-mail: longseat@sbcglobal.net  
www.fostoriacrystal.com

**BARNESVILLE ANTIQUE MALL**  
open 7 days, 8 - 5  
**Roger, Nancy and Brian Mayhugh**  
Owners

202 N. Chestnut St. 740-425-2435  
Barnesville, Ohio 43713 3 floors  
EXIT 202 OFF I-70 • always buying & selling antiques

**ALADDIN LAMP BOOKS**  
Free History of Aladdin Lamps  
Figurine Lamps Wanted  
Bill & Treva Courter

brtknight@aol.com  
3935 Kelley Rd. Phone 270-488-2116  
Kevil, KY 42053 FAX 270-488-2055

**THE GLASS CUPBOARD**

155 Blake Blvd. (Apt 215B)  
Pinehurst, North Carolina 28374

Bob & Marcia Ellis Cambridge Show  
910-295-2821 and Mail Order

**B&H ANTIQUE MARKETPLACE**

3739 Highway 29 North  
Danville, VA 24540

(434) 836-4636

Cambridge • Heisey • Duncan • Fostoria  
Open Thur - Sat 11:00 to 5:00 (seasonal hours apply)

Monday thru Saturday 10 - 5:30 Sunday 12 - 5:50

**Bogart's Antiques**  
BUY - SELL - APPRAISE - REFINISH  
CANE & REED CHAIRS - CLOCK REPAIR

Jack & Sharon Bogart State Route 40  
740-872-3514 shop 7527 East Pike  
740-826-7439 home Norwich, OH 43767

**BAKER FAMILY MUSEUM**  
805 CUMBERLAND ST.  
CALDWELL, OHIO 43724  
740- 732-6410  
bakermuseumnellbaker@msn.com

Wed & Thurs 9-4; Fri - Sat 9-5

**CRYSTALLINE COLORS**  
Buy, Sell and Appreciate  
Cambridge and other Elegant Glass

Riverfront Mall in New Phialdelphia, OH  
#'s 626 and 642

Lynne R. Franks 216-661-7382

**CRYSTAL LADY**  
Thurs. - Sat. 11-5  
1817 Vinton St. Omaha, NE 68108  
**Bill, Joann and Marcie Hagerty**  
Shop 402-341-0643 Home 402-391-6730

Specializing in Elegant Glass & Collectibles  
www.crystalladyantiques.com

**Storck's Antiques**  
**Rick & Joyce**

Antiques & Collectibles • Glass & Pottery  
Specializing in Fenton, Imperial & Cambridge  
Shows & Mail Orders • Storck1@aol.com  
Greenfield, MN 55373 • (763) 477-6415

*Mother Drucker's*  
*Penny Drucker*  
Specializing in Elegant Glassware  
Shows and Mail Order

  
P.O. Box 50261 Phone: 949-551-5529  
Irvine, CA 92619 888-MDRUCKER  
Website: http://motherdruckers.com

**Deborah Maggard, Antiques**  
Specializing in Cambridge Glass,  
American Hand-Made Glass & Victorian Art Glass

We buy one piece or entire collections.  
Please contact me at 440-247-5632  
or e-mail at debmaggard@adelphia.net

P.O. Box 211 • Chagrin Falls, OH 44022

**GLASS FROM THE PAST**  
Maureen Gillis



www.glassfromthepast1.com  
email: maureen@glassfromthepast1.com

**JUDY'S ANTIQUES**  
Judy Bennett  
422 S. Ninth Street (corner of Jefferson)  
Cambridge, Ohio 43725

Business (740) 432-5855  
Residence (740) 432-3045  
**CAMBRIDGE GLASS MY SPECIALTY**


**BRIDGES THRU TIME**  
Antiques & Elegant Glassware & Collectibles  
Member of Greater Houston BBB  
Located at Olde Carriage Shoppe  
810 2nd Street • Rosenberg, TX 77471

For Web-Storefront and Auctions  
Website: http://www.bridgesthruetime.com  
E-mail: imwolf@sbcglobal.net

**THE JONES GROUP**  
**Cindy Jones**  
Buy and Sell High End Cambridge Glass

509 Whitney Bay  
Windsor, CO

970-686-6896 or E-mail Caprice0@aol.com

  
**Mary Jane's Antiques**  
Early American Pattern Glass  
Depression Era Items

2653 Burgener Drive 217-422-5453  
Decatur, IL. 62521 mjhumes@aol.com

**THE GLASS HOUSE ANTIQUE MALL**  
Furniture, Pottery, Glass  
Antiques and Collectibles  
I-70 Exit 146, East on SR 40

8825 E. Pike  
Norwich OH 43767 TEL 740-872-3799

**GATEWAY ANTIQUE MALL, INC.**  
JUST NW OF MINNEAPOLIS-ST. PAUL, MN  
Next to Super 8 in Rogers, MN  
(I-94/101 intersection)

Multi-Dealer  
7 days; 10am - 6pm • 763-428-8286  
ELAINE STORCK, OWNER/DIRECTOR

**ISAACS ANTIQUES**  
(740) 826-4015

See our booths in Penny Court Mall in  
Cambridge and at White Pillars Antique Mall  
(Route 40, one mile west of  
I-70 Norwich, OH • Exit #164)

**PENNY COURT MALL**  
637 Wheeling Avenue  
Cambridge, Ohio

100 Booths 15,000 sq ft

HOURS: Daily 10-6 Sunday Noon-5  
Closed: Easter, Thanksgiving, Christmas

Call for other holiday hours 740-432-4369

**MARGARET LANE ANTIQUES**

2 E. Main St. New Concord, OH 43762  
Lynn Welker (740) 826-7414

Cambridge Glass Matching Service  
Hours: Mon-Fri 10-12 AM, 1-5 PM  
or by appointment

 **ur House Antiques**  
Linda & David Adams  
Las Vegas, NV

702-838-1341 or  
800-357-7169

Web: www.OurHouseAntiques.com  
E-mail: David@OurHouseAntiques.com



# Now Available... Cambridge Factory Plans

Authorized reproduction of the original plans and elevation of the Cambridge Glass Co. plant



**\$10 each**

plus \$5.50 shipping (for any number of prints)

● **CLICK THE BLUE DOT TO BUY ON-LINE**

**VISIT THE NCC'S NEW ebay STORE**

BUY BOOKS & MERCHANDISE ON-LINE

RENEW YOUR MEMBERSHIP

JOIN THE CENTURY CLUB

MAKE A DONATION TO THE CLUB

REGISTER FOR THE NOVEMBER QUARTERLY MEETING

●●● PAY WITH YOUR CREDIT CARD ●●●

<http://stores.ebay.com/National-Cambridge-Collectors>

## Have you joined The Century Club for 2005?

It's the best way to support the NCC now and for the future. Your contribution of \$100 goes 1/3 to the Endowment and 2/3 to pay down the mortgage on the museum.

CLICK HERE TO JOIN THE CENTURY CLUB ON-LINE,  
USING YOUR CREDIT CARD

Mail your check today to:  
NCC Century Club  
PO Box 416  
Cambridge, OH 43725



**E-mail Address Changes to:**  
**lin26@hocking.net**

**Or by Mail to:**  
**Linda Adkins, Membership**  
**NCC**  
**PO Box 416**  
**Cambridge, OH 43725**

More photos of Carmen  
here & on the following page...



*Flying Lady Bowl*

*Tally Ho Stems: Yukon, Gold Silkscreen,  
Partial Frosted, Silver Overlay*



# Additional Carmen Glass

(available ONLY in the **e-Crystal Ball**)



*"Snail" Table Center*

*Everglade Console Set*



*Tally Ho Comport with  
Silk Screen Decoration*

